

Appendix E
Historic and Cultural Resources

Appendix E-1
DAHP Concurrence on Area of Potential Effects



STATE OF WASHINGTON

DEPARTMENT OF ARCHAEOLOGY & HISTORIC PRESERVATION

1063 S. Capitol Way, Suite 106 • Olympia, Washington 98501

Mailing address: PO Box 48343 • Olympia, Washington 98504-8343

(360) 586-3065 • Fax Number (360) 586-3067 • Website: www.dahp.wa.gov

February 1, 2010

Mr. James La Spina
Siting Specialist
Energy Facility Site Evaluation Council
905 Plum Street, Building 3
P.O. Box 43172
Olympia, WA 98504-3172

In future correspondence please refer to:

Log: 012610-17-EFSEC

Property: *Consultation for Area of Potential Effects Whistling Ridge Energy Project, Skamania County, Washington*

Re: Area of Potential Effects-Concurrence and Comments

Dear Mr. La Spina:

We have reviewed the material you forwarded to our office that describes the area of potential effect (APE) for the Whistling Ridge Wind Energy Project in Skamania County. We concur with the definition of the APE. We look forward to receiving any correspondence or comments from the concerned Tribes or other parties and the cultural resources survey report when it is available.

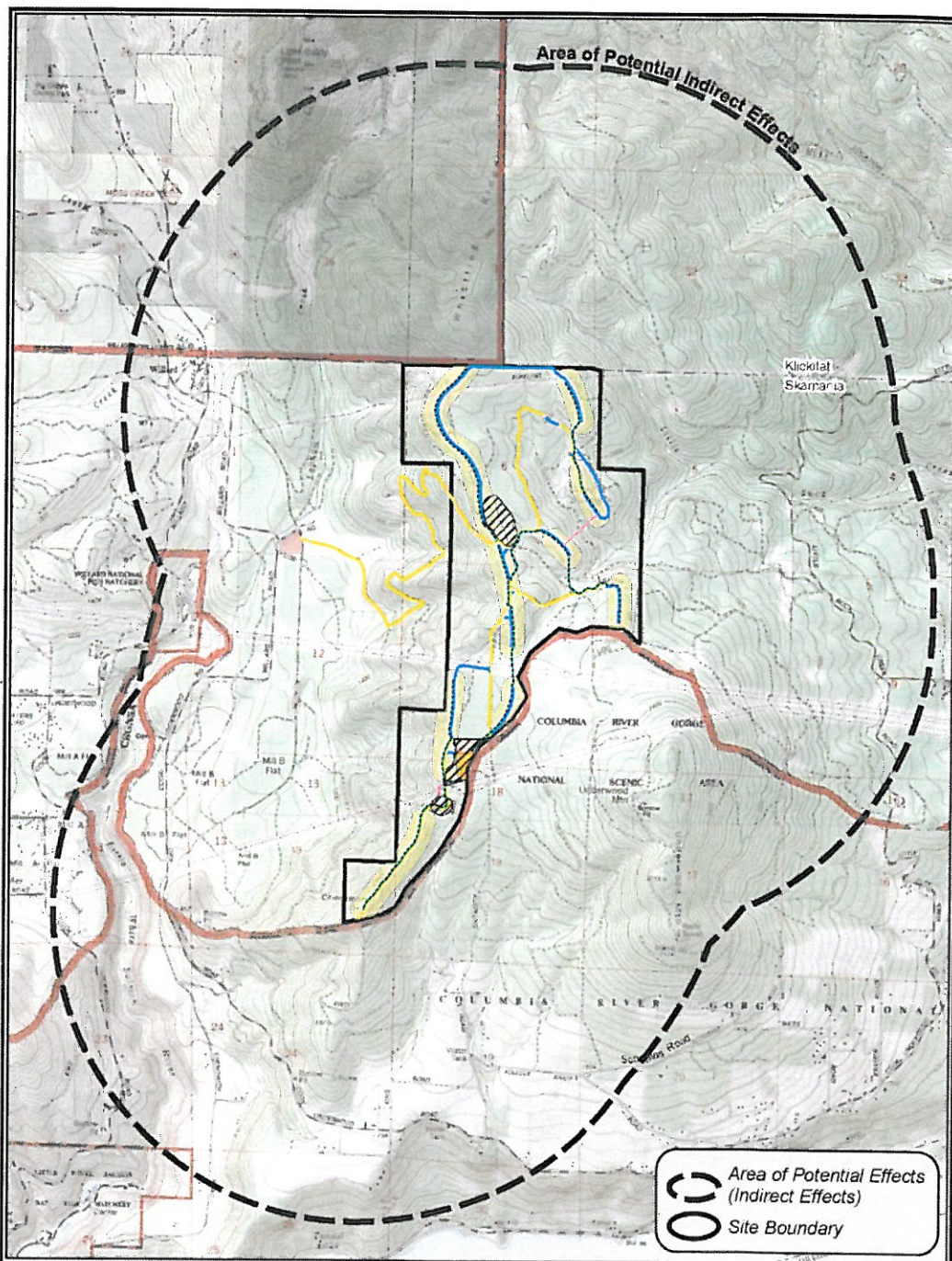
These comments are based on the information available at the time of this review and on behalf of the State Historic Preservation Officer. Thank you for your consultation. If you have any questions, please feel free to contact me.

Sincerely,

Gretchen Kaehler
Assistant State Archaeologist
(360) 586-3088
gretchen.kaehler@dahp.wa.gov

CC. Katy Chaney, URS Corporation
Jessica Lally, Wind Farm Archaeologist, Yakama Nation





- Area of Potential Effects**
- 650' Turbine Corridor
 - Approximate Location of 5 Acre Laydown Staging Areas
 - Overhead Power Line
 - Buried Collector Lines - Turbines to Substation
 - 5 Acre Substation Plot
 - 5 Acre Operations and Maintenance Facility Alternative Locations
 - Improved Existing Roads
 - New Project Roads

Area of Potential Effects (Indirect Effects)
 Site Boundary

Figure 1
Area of Potential Effects
Whistling Ridge Energy Project

N

0 0.5 1
Miles