

**BEFORE THE
WASHINGTON UTILITIES AND TRANSPORTATION COMMISSION**

WASHINGTON UTILITIES AND TRANSPORTATION COMMISSION,)	
)	
Complainant,)	
)	
v.)	DOCKETS UE-160228 and UG-160229 (Consolidated)
)	
AVISTA CORPORATION, DBA AVISTA UTILITIES,)	
)	
Respondent.)	
<hr/>)	

EXHIBIT NO. RRS-3

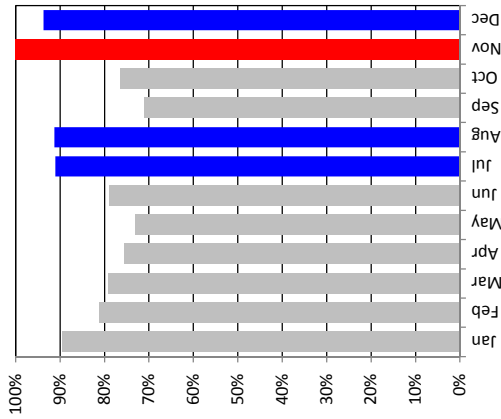
MONTHLY PEAK DEMANDS AS A PERCENT OF THE ANNUAL SYSTEM PEAK

AUGUST 17, 2016

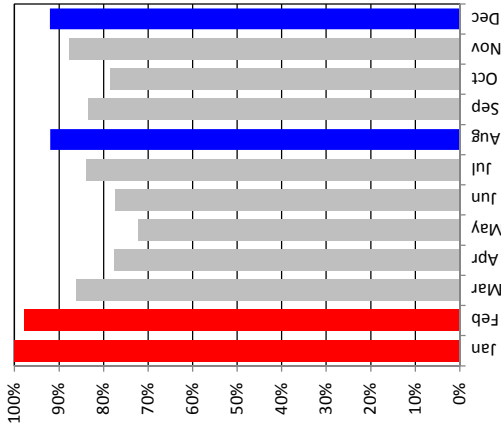
AVISTA CORPORATION

Monthly Peak Demands as a Percent of the Annual System Peak

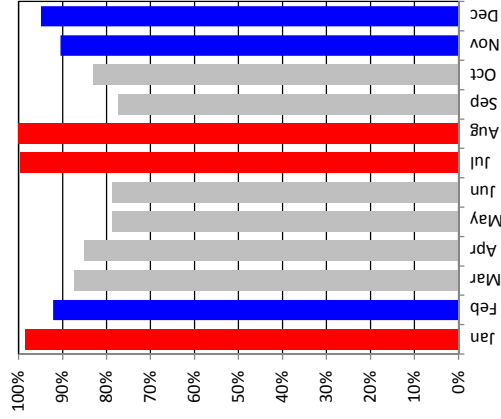
Calendar Year 2010



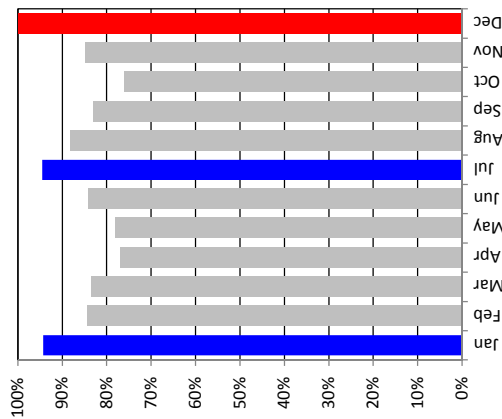
Calendar Year 2011



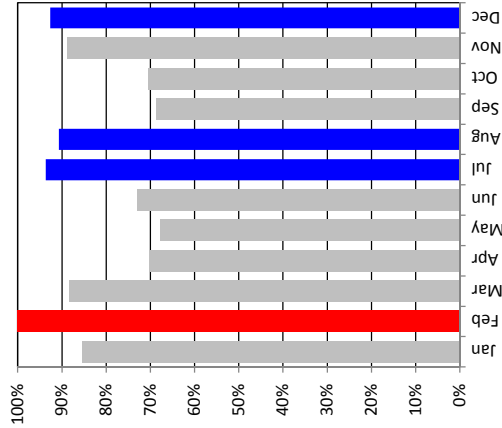
Calendar Year 2012



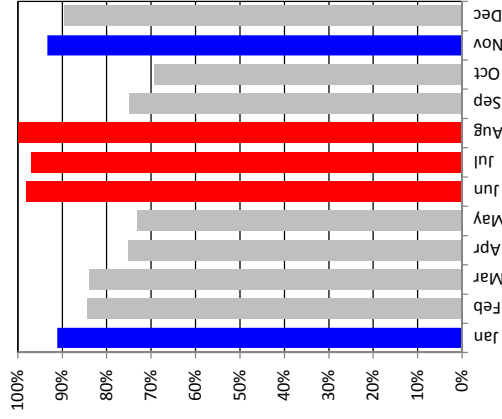
Calendar Year 2013



Calendar Year 2014



Calendar Year 2015



█ Monthly Peaks are Greater than 95%
█ Monthly Peaks are 90% to 95%