

REDACTED

From: THOMAS Wesley * DEQ <Wesley.THOMAS@deq.oregon.gov>
Sent: Wednesday, February 22, 2023 3:12 PM
To: John Renda <jrenda@anchorqea.com>
Cc: Bob Wyatt <rjw@nwnatural.com>; Patricia Dost <pdost@pearllegalgroup.com>; Halah Voges <hvoges@anchorqea.com>; Ryan Barth <rbarth@anchorqea.com>; Rob Ede <robe@hahnenv.com>; Jen Mott <jmott@anchorqea.com>
Subject: RE: Request to discontinue manual measurements at the former Koppers basin

CAUTION: This email originated from outside of Anchor QEA. Do not click links or open attachments unless you recognize the sender and know the content is safe.

John,

DEQ approves discontinuing weekly manual water level measurements at PZ-KB1, SW-KB1, and MW-KW-2. Once the permanent pump installation is completed, DEQ would like NW Natural to conduct periodic visual monitoring of the Koppers Basin to verify that the dewatered condition is maintained. I will discuss the scope and frequency of the visual monitoring with Rob and Halah during our next check-in meeting.

Regards,

Wes

Wesley Thomas, P.E.
Project Manager/Environmental Engineer
O: 503-229-6932
M: 971-263-8822
Wesley.Thomas@deq.oregon.gov

From: John Renda <jrenda@anchorqea.com>
Sent: Wednesday, February 22, 2023 10:06 AM
To: THOMAS Wesley * DEQ <Wesley.THOMAS@deq.oregon.gov>

Cc: Bob Wyatt <rjw@nwnatural.com>; Patricia Dost <pdost@pearllegalgroup.com>; Halah Voges <hvoges@anchorqea.com>; Ryan Barth <rbarth@anchorqea.com>; Rob Ede <robe@hahnenv.com>; Jen Mott <jmott@anchorqea.com>

Subject: Request to discontinue manual measurements at the former Koppers basin

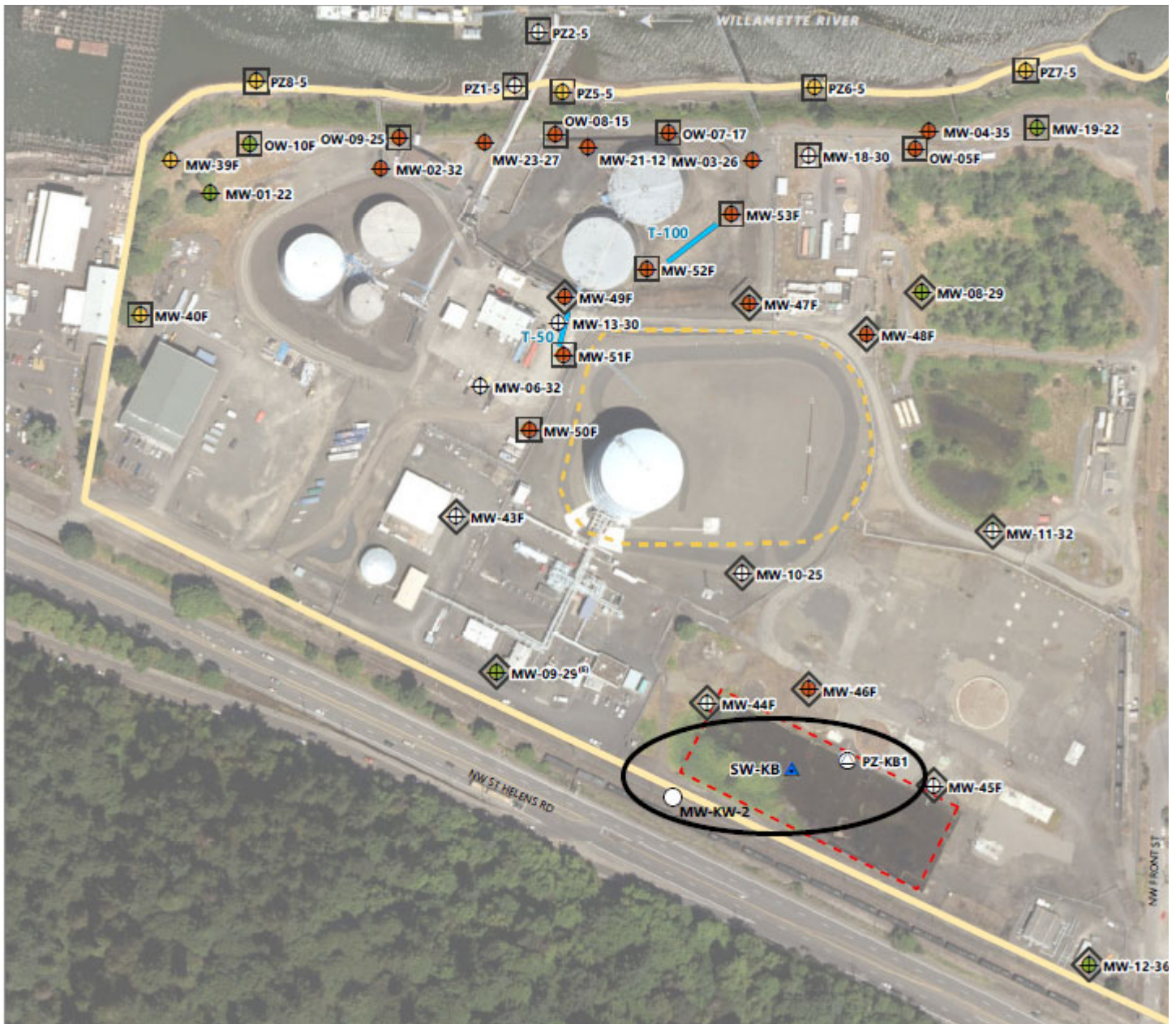
Hi Wes!

As Rob and Halah discussed with you in a meeting on 2/2/23, the piezometer in the former Koppers basin, PZ-KB1, was mounted to a staircase that descends into the basin. During work to permanently place a pump in the former Koppers basin, a subcontractor unbolted the staircase and permanently moved it to another location to service the new pump. There is no longer access to the piezometer which has been manually monitored monthly since January 2019 and weekly from May 2019 through January 2023 along with the surface water elevation in the Koppers basin (SW-KB) and monitoring well MW-KW-2. The purpose of the weekly measurements was to monitor changes in groundwater following the decommissioning of the Koppers facility when pumping water from the basin ceased. Now that a permanent pump is being installed to maintain dewatering of the former Koppers basin and the hydraulic connection between the water levels in the basin and underlying groundwater is better understood, monitoring of these locations is no longer needed.

NW Natural is requesting discontinuation of weekly manual water level measurements at PZ-KB1, SW-KB1, and MW-KW-2. The other monitoring locations that are reported monthly are equipped with transducers and recorded at 15-minute intervals. We understand that DEQ still finds the monthly water level reporting useful, so we will continue reporting a weekly measurement from those locations.

Piezometer PZ-KB1 was last monitored on 1/26/23. We will continue with weekly measurements from SW-KB and MW-KW-2 until we have DEQ approval to discontinue. These three monitoring points are circled in the image below.

Please let us know if you have any questions.



John J. Renda, RG

ANCHOR QEA, LLC

jrenda@anchorqea.com

6720 S Macadam Avenue, Suite 125

Portland, OR 97219

Main 503.670.1108 x6171

Direct 503.924.6171

Cell 503.502.5470

ANCHOR QEA, LLC

Please consider the environment before printing this email.

This electronic message transmission contains information that may be confidential and/or privileged work product prepared in anticipation of litigation. The information is intended for the use of the individual or entity named above. If you are not the intended recipient, please be aware that any disclosure, copying distribution or use of the contents of this information is prohibited. If you have received this electronic transmission in error, please notify us by telephone at (503) 670-1108.