

Enhanced Training  
- Public works

# Construction Activities Near Avista Gas Lines

Enhanced training for excavations near  
Aldyl A pipe



*This document is owned by AVISTA and is for the use of their clients. All information contained in this document is proprietary and protected under United States copyright and patent laws.*

*You may not distribute, modify, transmit, reuse, repost, or use any part of the content for any purpose without an authorized AVISTA representative's written permission.*

*The names of actual companies and products mentioned herein may be the trademarks of their respective owners. Material copyrighted by others is used with the expressed permission of the owners.*

*Unless otherwise noted, the example organizations and people depicted herein are fictitious. Any unintentional use of real names is inadvertent and coincidental.*

©2011 AVISTA

*All rights reserved.*

# Introduction

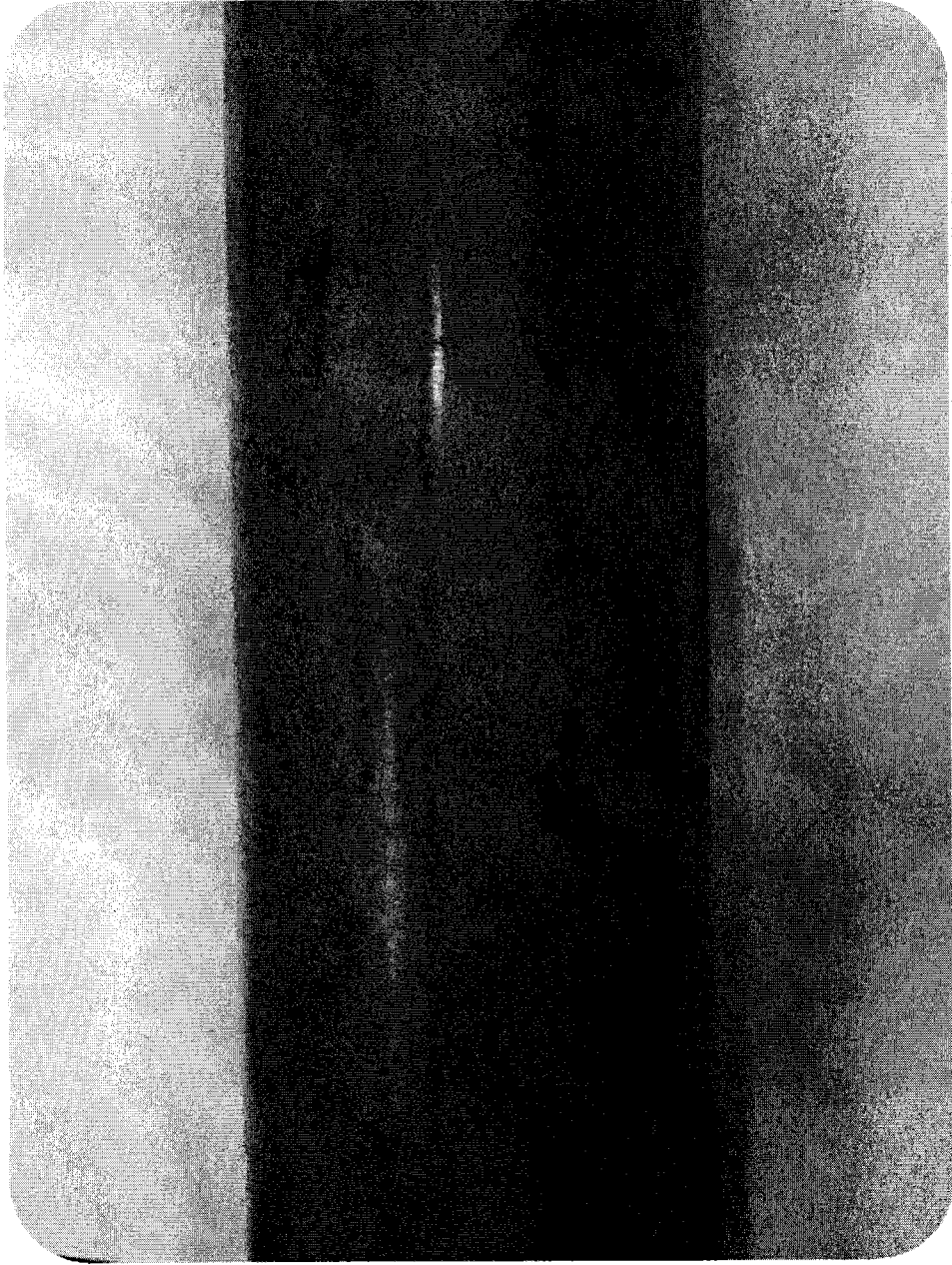
The intent of this training is to increase your awareness of the importance for safe treatment of Avista's Aldyl A gas pipe during excavation activities.

Although it is very important to handle all gas lines with extreme care, Avista would like to put a higher emphasis on the handling and care of Aldyl A polyethylene pipe.

# **WA State Dig Laws**

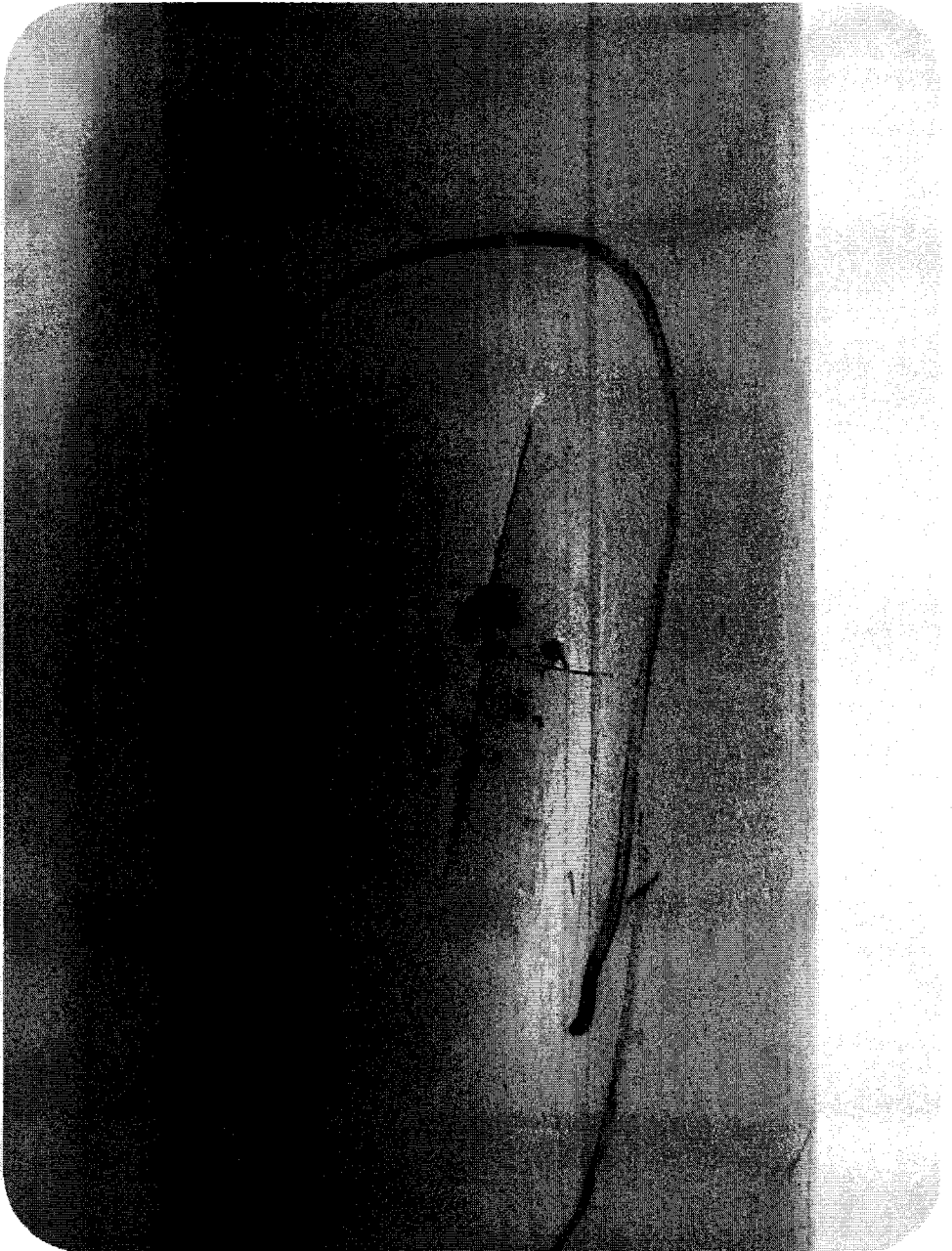
RCW 19.122 "Underground Utilities"



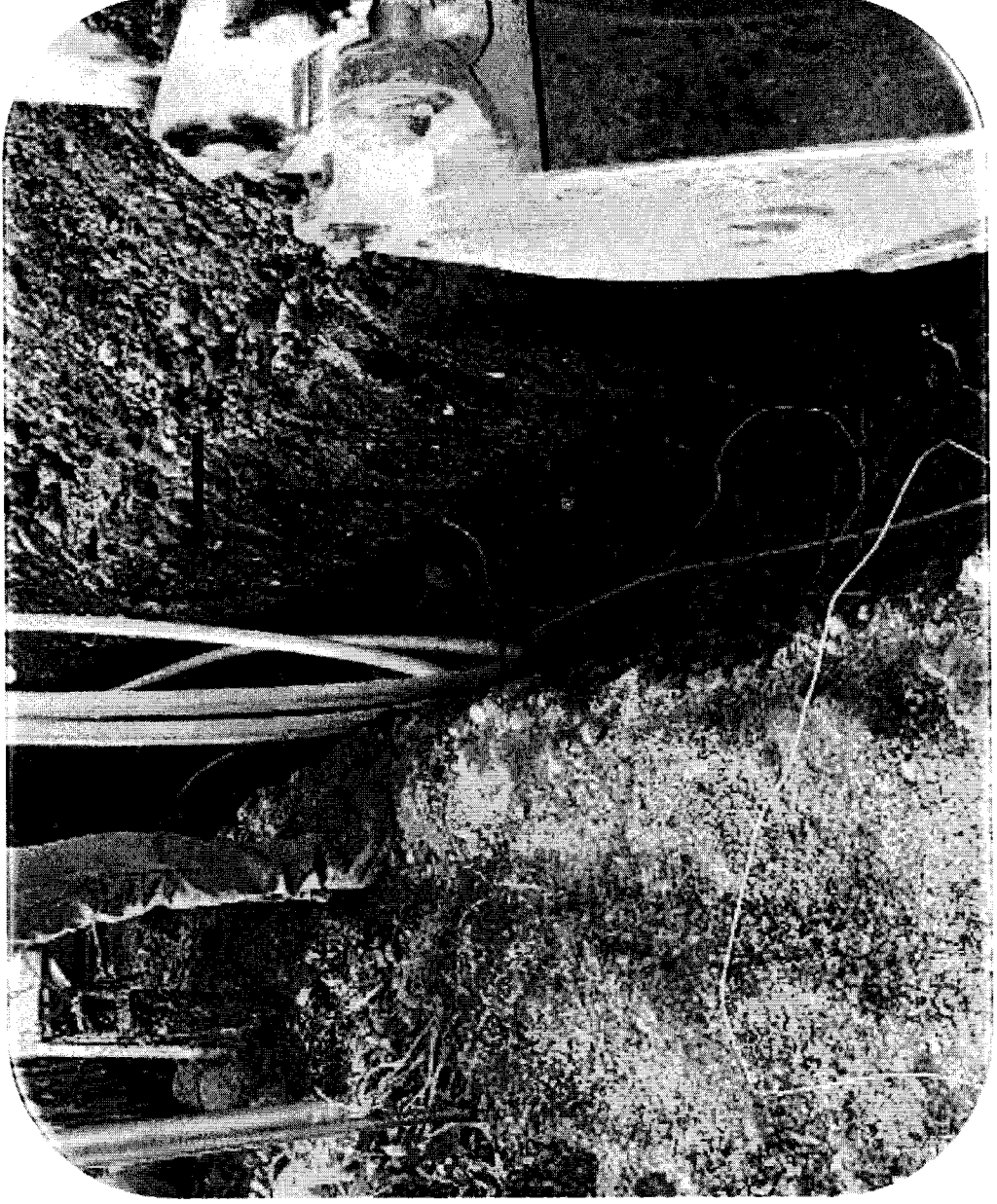


**ALDYL A PIPE**

# Impingement



# Cover Requirements



# Clearance Requirements

*Foreign-12 inches*

*Water-3 feet*

*Sewer-5 feet*

*Steam-10 feet*

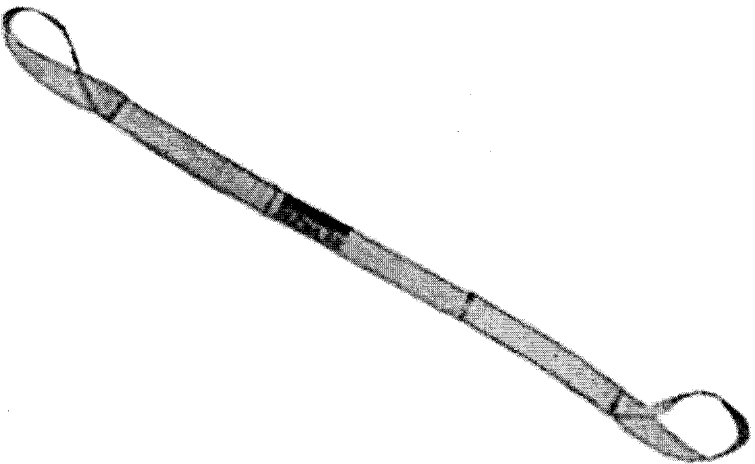




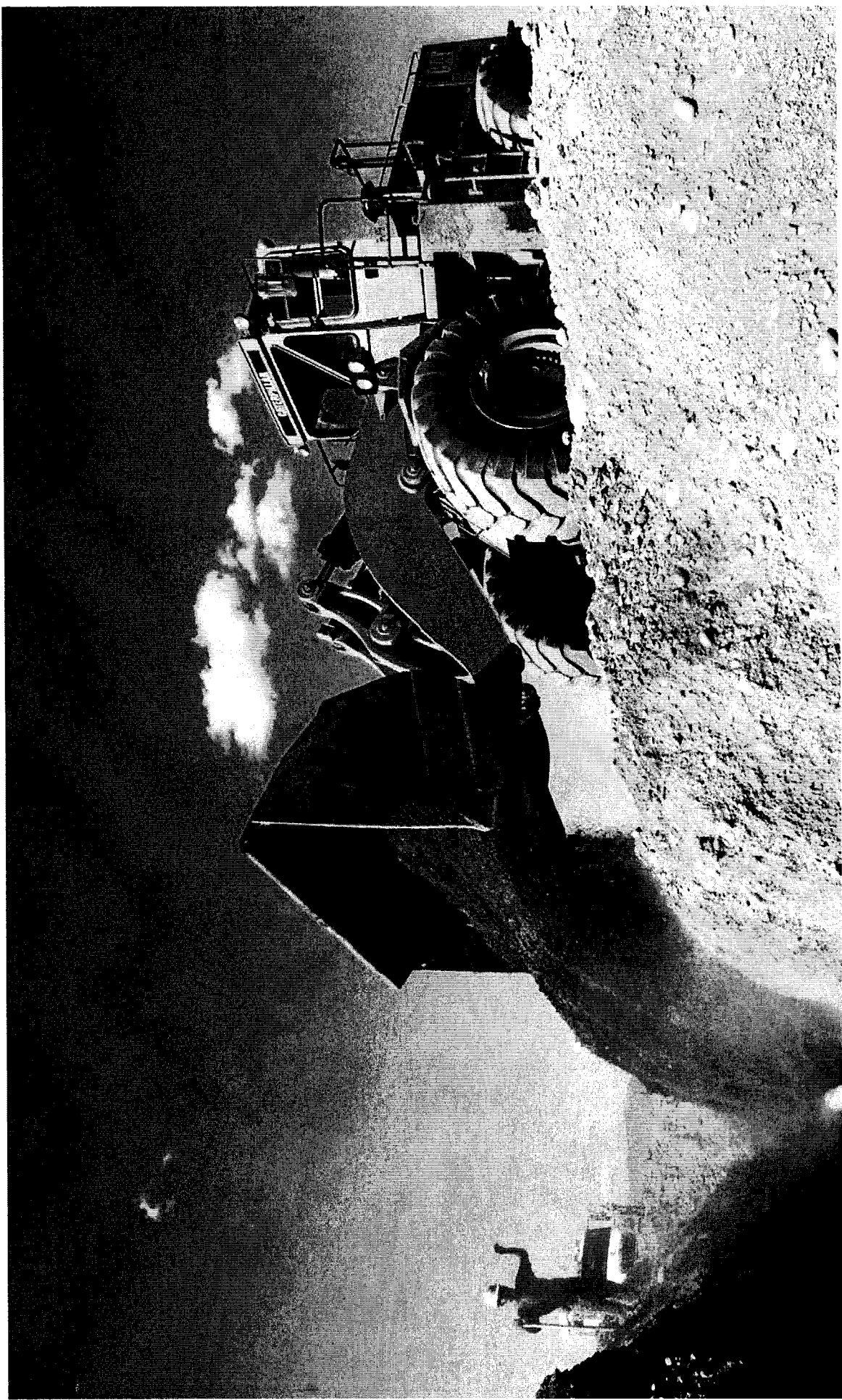
# Bedding



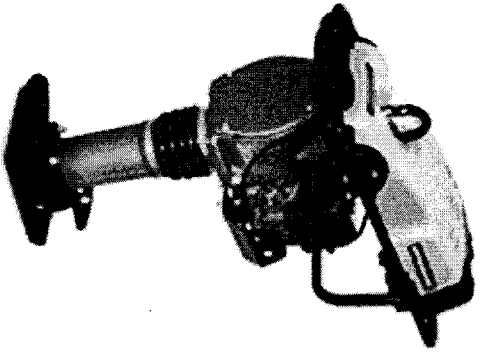
# Pipe Support



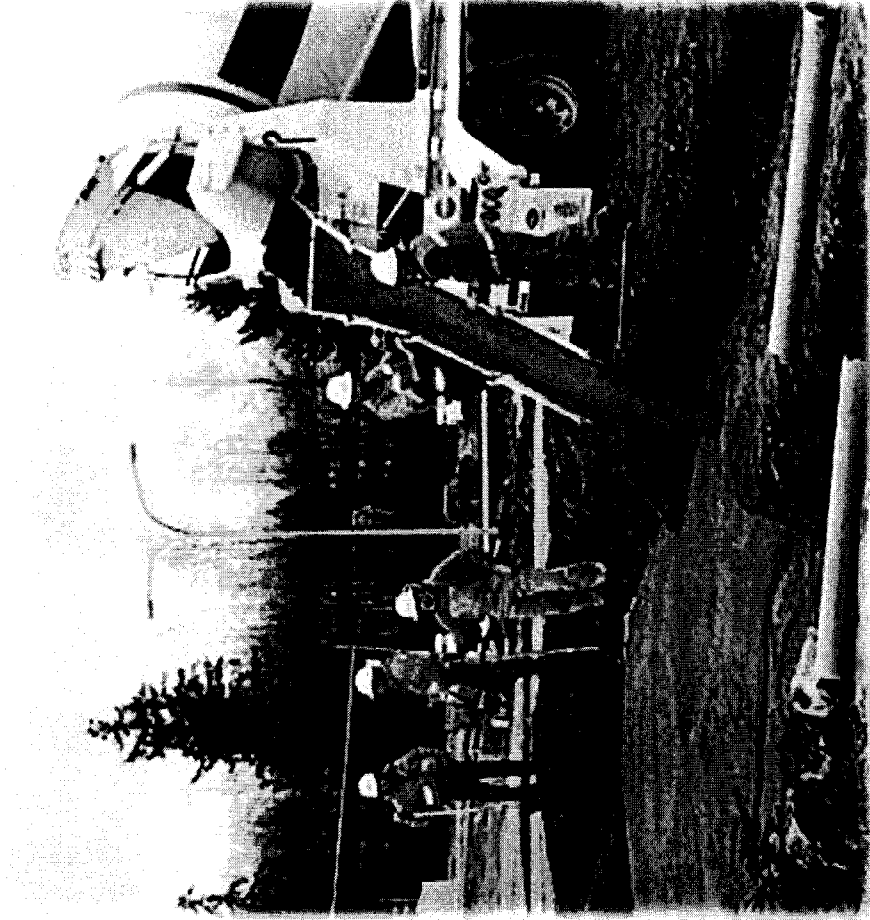
# Backfill Requirements




# Compaction



# Controlled Density Fill (CDF)



# Contact Information

 **AVISTA** (800) 227-9187

**Thank You**

