

2022 Affiliated Interest Report for Torre Refuse & Recycling, LLC (G-260) d/b/a Sunshine Disposal & Recycling in accordance with WAC 480-70-079 (Redacted Version)

Torre Refuse & Recycling, LLC (TRR) shares common ownership and control with the following companies:

- Ada-Lin Waste Systems, Inc. (AWS)
- WSF, LLC (WSF)
- South Clayton Land Company, LLC (SCLC)
- Sunshine Recyclers, Inc. (SRI)
- Sunshine Disposal, Inc. (SDI) (wholly owned by Sunshine Recyclers, Inc.)

TRR provides the following services to AWS, SRI and SDI:

Equipment Repair, Management, Procurement, Facility, Accounting, and Customer Service.

The total amount paid by each entity for these combined services in 2022 was:

AWS: \$ [REDACTED]
SDI: \$ [REDACTED]
SRI: \$ [REDACTED]

These totals are determined through an allocation of actual usage of these services by the various entities.

These 3 companies also have loans due to or due from TRR as needed. Interest is paid at the bank's prime rate (currently 6.25%). The terms are perpetual. The balances at 12/31/2022 were as follows:

AWS payable to TRR: \$ [REDACTED]
TRR payable to SRI: \$ [REDACTED]
SDI payable to TRR: \$ [REDACTED]

WSF provides the following services to TRR:

Container maintenance and manufacturing and truck component purchasing. (\$ [REDACTED] in 2022)

SCLC provides the following services to TRR: Facility Rental (\$ [REDACTED] in 2022)

The following are the owners and officers of the related companies with affiliated transactions in excess of \$100,000:

Torre Refuse and Recycling, LLC

- Marc Torre, Managing Member (80% owner)
- Michael Torre, Member (20% owner)

WSF, LLC

- Marc Torre, Managing Member (95% owner)
- Michael Torre, Member (5% owner)

Ada-Lin Waste Systems, Inc.

Marc Torre, President (100% owner)
Michael Torre, Secretary/Treasurer

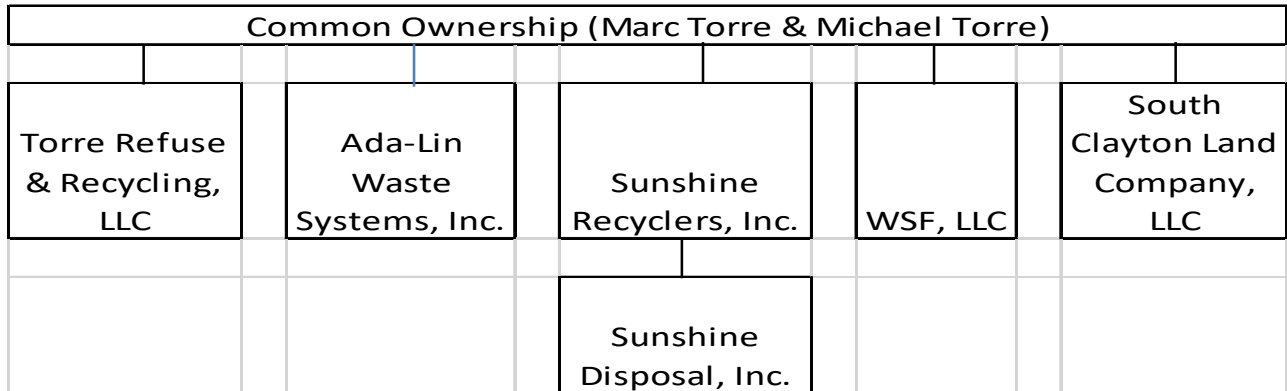
Sunshine Recyclers, Inc.

Marc Torre, President (100% owner)
Michael Torre, Vice President/Secretary/Treasurer

Sunshine Disposal, Inc. (100% owned by SRI)

Marc Torre, President
Michael Torre, Vice President/Secretary/Treasurer

The organization chart is as follows:



The following are financial statements for related in compliance with WAC 480-70-079(3)(A)

| | Ada-Lin Waste Systems, Inc. | Sunshine Disposal, Inc. | Sunshine Recyclers, Inc. | WSF, LLC |
|-------------------------|--------------------------------|----------------------------|-----------------------------|----------|
| Balance Sheet | | | | |
| Current Assets | ████████ | ████████ | ████████ | ████████ |
| Fixed Assets | ████████ | ████████ | ████████ | ████████ |
| Other Assets | ████████ | ████████ | ████████ | ████████ |
| Total Assets | ████████ | ████████ | ████████ | ████████ |
| Liabilities | ████████ | ████████ | ████████ | ████████ |
| Due Related Entity | ████████ | ████████ | ████████ | ████████ |
| Equity | ████████ | ████████ | ████████ | ████████ |
| Total Liab + Equity | ████████ | ████████ | ████████ | ████████ |
| Income Statement | | | | |
| Revenue | ████████ | ████████ | ████████ | ████████ |
| Expense | ████████ | ████████ | ████████ | ████████ |
| Net Income | ████████ | ████████ | ████████ | ████████ |