

**BEFORE THE**  
**WASHINGTON UTILITIES AND TRANSPORTATION COMMISSION**

WASHINGTON UTILITIES AND	)	
TRANSPORTATION COMMISSION,	)	
	)	
Complainant,	)	
	)	
v.	)	DOCKET NOS. UE-140762 and
	)	UE-140617 ( <i>consolidated</i> )
PACIFICORP D/B/A PACIFIC POWER &	)	
LIGHT COMPANY,	)	
	)	
Respondent.	)	
_____	)	
	)	
In the Matter of the Petition of	)	
	)	
PACIFIC POWER & LIGHT	)	DOCKET NO. UE-131384
COMPANY,	)	( <i>consolidated</i> )
	)	
For an Order Approving Deferral of	)	
Costs Related to Colstrip Outage	)	
_____	)	
	)	
In the Matter of the Petition of	)	
	)	
PACIFIC POWER & LIGHT	)	DOCKET NO. UE-140094
COMPANY,	)	( <i>consolidated</i> )
	)	
For an Order Approving Deferral of	)	
Costs Related to Declining Hydro	)	
Generation	)	
_____	)	

**EXHIBIT NO. \_\_\_(RRS-3)**

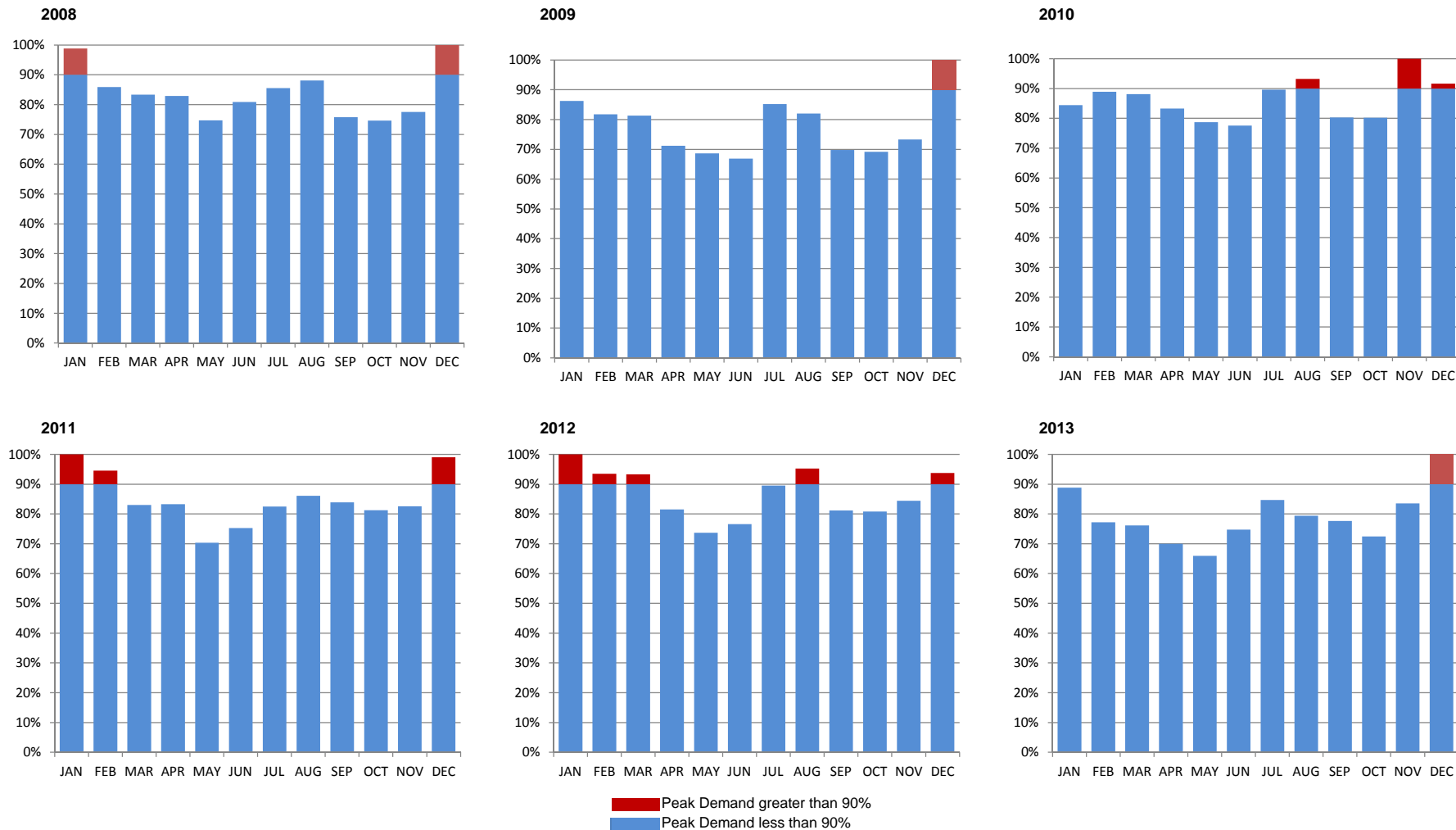
**MONTHLY PEAK DEMANDS AS A PERCENT OF THE ANNUAL SYSTEM PEAK**

**October 10, 2014**

# PacifiCorp

## Western States Division (OR, WA, CA)

### Monthly Peak Demands as a Percent of the System Peak (Western States) 2008 thru 2013



Source: Years 2008 - 2012, PP&L response to Boise Data Request 11.1.  
2013 derived from data on the "100 S 100W" tab in Company ECOS Study.