

POPLAR STREET IRRP - 5TH TO 14TH

WALLA WALLA, WA
 FEDERAL AID PROJECT # _____
 CITY PROJECT # IRRP028
 FEDERAL AID AGREEMENT # _____

SHEET INDEX		
SHEET NO.	SHEET ABBR.	SHEET TITLE
1	IN1	COVER SHEET
2	IN2	LEGEND, ABBREVIATIONS, AND GENERAL NOTES
*	SQ*-SQ*	SUMMARY OF QUANTITIES
3-6	RS1-RS4	ROADWAY SECTIONS
7-17	SP1-SP11	SITE PREPARATION PLAN
18-30	RP1-RP13	ROADWAY PLAN & PROFILE
31-34	GR1-GR4	INTERSECTION GRADING PLAN
*	DT*-DT*	ROADWAY DETAILS
35-45	DR1-DR11	DRAINAGE & CONTOUR GRADING PLAN
46-53	DP1-DP8	DRAINAGE PROFILES & DETAILS
54	DRD1	DRAINAGE DETAILS
*	TES*-TES*	TEMPORARY EROSION AND SEDIMENT CONTROL PLANS
55-71	UT1-UT17	SEWER AND WATER PLAN AND PROFILE
*	UD*-UD*	WATER CONNECTION DETAILS
*	IR*-IR*	IRRIGATION PLAN
72-81	PM1A-PM9	SIGNING & PAVEMENT MARKING PLAN
82-90	IL1-IL9	ILLUMINATION & DRY UTILITY PLAN
91-94	SG1-SG4	SIGNAL MODIFICATION PLAN
*	FB*-FB*	RRFB PLANS
95-99	TC1-TC5	TRAFFIC CONTROL PLAN

* PLANS THAT WILL BE INCLUDED IN 90% DESIGN PACKAGE

FUNDING AGENCIES



CITY COUNCIL
 TOM SCRIBNER - MAYOR
 BRIAN CASEY
 RICK ESKIL
 STEVE MOSS
 GUSTAVO REYNA
 JEFFREY ROBINSON
 MONTE A. WILLIS

CITY OFFICIALS
 ELIZABETH CHAMBERLAIN - CITY MANAGER
 KI BEALEY, P.E. - PUBLIC WORKS DIRECTOR
 NEAL CHAVRE, P.E. - CITY ENGINEER
 MONTE PUYMON, P.E. - PROJECT MANAGER

CA AGENCY APPROVAL

WALLA WALLA CITY ENGINEER



60% PLANS

PRELIMINARY

DESIGNED BY: HRC	BY	CK
DETAILED BY: AWRA		
CHECKED BY: DLWI		
REVISION LOG		
NO.	DATE	REVISION



POPLAR STREET IRRP - 5TH TO 14TH		DATE: 10/1/24
FEDERAL-AID NO. _____		PROJECT NO. _____
COVER SHEET		SHEET NO. 1 OF 99
CITY OF WALLA WALLA	WASHINGTON	IN1

Plot Date: 10/1/2024 3:49 PM
 Save Date: 10/1/2024 3:12 PM
 By: Alex Raymond
 By: Avra
 File: P:\WALLA\000000114\0400CAD\SHEETS\WALLA14 01 IN.dwg

LEGEND

PROPOSED	EXISTING	REMOVAL	DESCRIPTION
			CONTROL POINT (AS NOTED)
			BRASS CAP/SURFACE MON (AS NOTED)
			IRON PIPE (AS NOTED)
			REBAR (AS NOTED)
			NAIL PK/MAG
			STREET LIGHT LUMINAIRE, COBRA HEAD STANDARD
			SIGN
			RECTANGULAR RAPID FLASHING BEACON (RRFB)
			BOLLARD
			GUY ANCHOR
			POWER POLE
			TRAFFIC SIGNAL
			ELECTRIC CABINET
			ELECTRIC RISER
			ELECTRIC J-BOX, TYPE 1
			ELECTRIC J-BOX, TYPE 2
			LOCKING LID TYPE 8 JUNCTION BOX
			TELEPHONE POLE
			TELEPHONE VAULT
			TELEPHONE RISER
			TELEPHONE CABINET
			TELEPHONE MANHOLE
			CURB CUT WITH APRON
			STORM CATCH BASIN
			STORM DRAIN MANHOLE
			STORM DRAIN DRYWELL
			STORM FIELD INLET
			SANITARY SEWER MANHOLE
			SANITARY SEWER CLEAN OUT
			WATER VALVE
			WATER METER
			WATER VAULT
			GAS METER
			GAS VALVE
			FIRE HYDRANT
			IRRIGATION CONTROL VALVE
			TREE
			BUSH
			STUMP
			BOULDER
			MAILBOX
			RECTANGULAR RAPID FLASHING BEACON PUSH BUTTON
			RIGHT OF WAY
			PROPERTY LINE
			EDGE OF BUILDING
			TEMPORARY EASEMENT
			CURB & GUTTER
			STRAIGHT CURB
			EDGE OF PAVEMENT
			WATERLINE
			IRRIGATION LINE
			GAS UNDERGROUND LINE
			GAS UNDERGROUND LINE - ABANDONED
			FIBER OVERHEAD LINE
			FIBER UNDERGROUND LINE
			POWER UNDERGROUND LINE/ ILLUMINATION CONDUIT
			POWER OVERHEAD LINE
			TELEPHONE OVERHEAD LINE
			TELEPHONE UNDERGROUND LINE
			TELEVISION UNDERGROUND LINE
			STORM DRAIN LINE
			SANITARY SEWER LINE
			UNKNOWN UNDERGROUND UTILITY
			CONTOUR - 0.2' INTERVAL
			CONTOUR - 1.0' INTERVAL
			IRRIGATION POINT OF CONNECTION
			IRRIGATION CONTROLLER
			IRRIGATION SYSTEM CONTROLLER
			3" HMA PAVING
			5" HMA PAVING
			6" HMA PAVING
			4" CONCRETE SIDEWALK
			6" CONCRETE SIDEWALK & DRIVEWAY
			LANDSCAPE
			DETECTABLE WARNING PLATE
			UNDERGROUND INFILTRATION CHAMBER
			FILTERRA

ABBREVIATIONS

ABBREVIATION	DESCRIPTION
AASHTO	AMERICAN ASSOCIATION OF STATE HIGHWAY AND TRANSPORTATION OFFICIALS
A.P.	ANGLE POINT
AVE	AVENUE
BK	BACK
BP	BEGINNING POINT
B/O	BLACK AND ORANGE
BVCE	BEGIN VERTICAL CURVE ELEVATION
BVCS	BEGIN VERTICAL CURVE STATION
CONC.	CONCRETE
D.I.	DUCTILE IRON
E	EAST/EASTING
EP	END POINT
EL, ELEV	ELEVATION
EVCE	END VERTICAL CURVE ELEVATION
EVCS	END VERTICAL CURVE STATION
EX	EXISTING
FG	FINAL GRADE
FL	FLOW LINE
HP	HIGH POINT
I.E.	INVERT ELEVATION
L.F.	LINEAR FEET
LP	LOW POINT
LT	LEFT
MAX.	MAXIMUM
MIN.	MINIMUM
N	NORTH/NORTHING
NO	NUMBER
PC	POINT OF CURVATURE
PCMS	PORTABLE CHANGEABLE MESSAGE SIGN
PT	POINT OF TANGENCY
PVC	POLYVINYL CHLORIDE
PVI	POINT OF VERTICAL INTERSECTION
RRFB	RECTANGULAR RAPID FLASHING BEACON
RT	RIGHT
S	SOUTH
SEC	SECOND
SD	STORM DRAIN
CB	STORM DRAIN CATCH BASIN
SDMH	STORM DRAIN MANHOLE
SS	SANITARY SEWER
ST	STREET
STA	STATION
TYP	TYPICAL
UG	UNDERGROUND
UIC	UNDERGROUND INFILTRATION CHAMBER
W	WEST

GENERAL NOTES:

1. THE CONTRACTOR SHALL KEEP THE SITE IN A NEAT AND ORDERLY CONDITION. ALL TRASH GENERATED BY THE CONTRACTOR'S OPERATIONS SHALL BE PICKED UP AT THE END OF THE DAY. EQUIPMENT, VEHICLES AND MATERIALS SHALL BE STAGED EITHER OFFSITE, OR ALONG CLOSED PORTIONS OF THE RIGHT OF WAY.
2. THE CONTRACTOR IS RESPONSIBLE FOR SECURING ALL STAGING LOCATIONS.
3. THE UNKNOWN UNDERGROUND UTILITIES, LABELED AS UX, ARE FROM THE GPR SURVEY AND NOT CLAIMED BY ANY UTILITY COMPANIES.

DESIGNED BY: HRC	
DETAILED BY: AWRA	
CHECKED BY: DLWI	
REVISION LOG	BY CK
NO. DATE REVISION	



POPLAR STREET IRRP - 5TH TO 14TH
FEDERAL-AID NO. _____

DATE: 10/1/24

PROJECT NO. _____

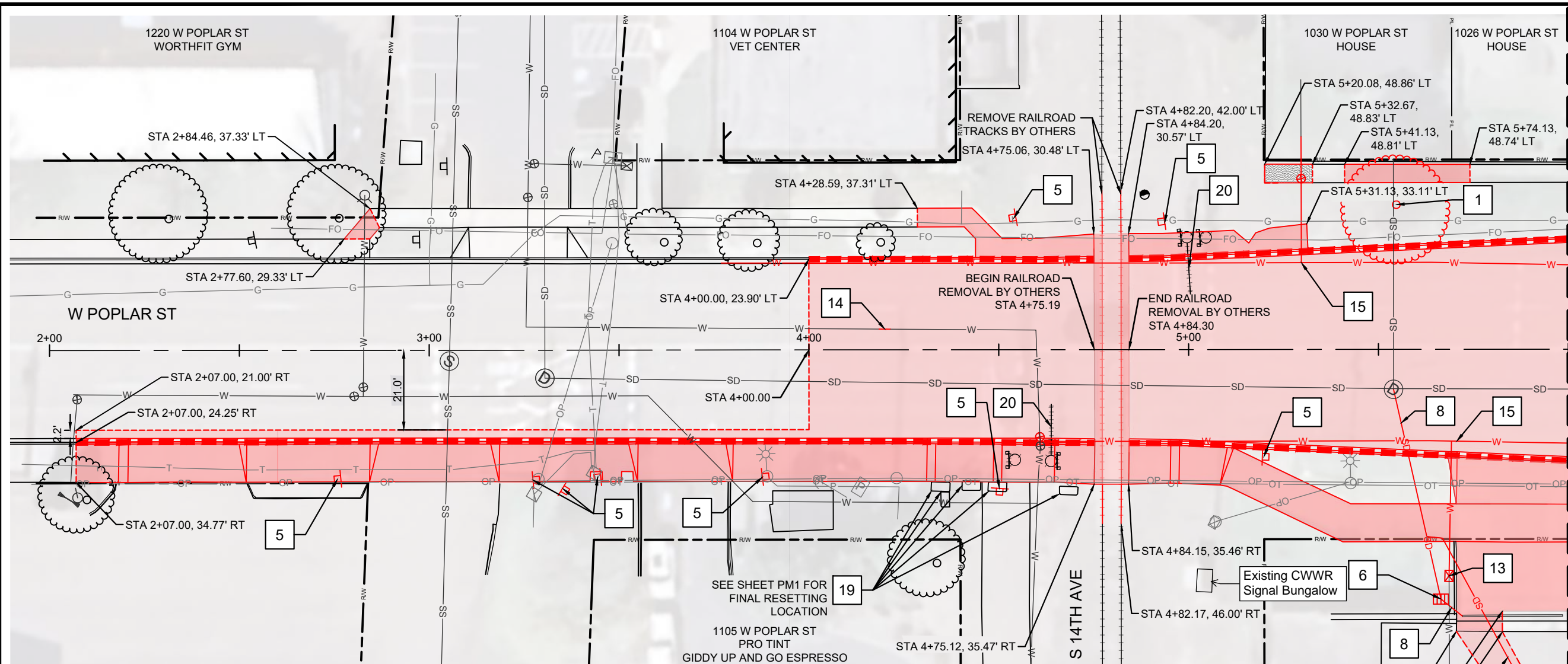
SHEET NO. 2 OF 99

IN2

CITY OF WALLA WALLA WASHINGTON

Plot Date: 10/1/2024 2:16 PM
 Save Date: 9/30/2024 3:59 PM
 By: Alex Raymond
 File: P:\WVWAL\000000114\0400CAD\SHETS\WALA14 01 IN.dwg

PRELIMINARY



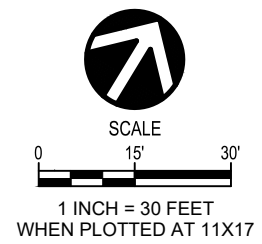
- ### SITE PREP NOTES
- 1 REMOVING TREE
 - 2 PRUNE TREE
 - 3 REMOVING TRAFFIC SIGNAL
 - 4 REMOVING AND SALVAGE SIGNAL CABINET
 - 5 REMOVING TRAFFIC SIGN*
 - 6 REMOVING CONC. INLET
 - 7 REMOVING STORM MANHOLE
 - 8 REMOVING STORM DRAIN PIPE
 - 9 REMOVING SANITARY SEWER MANHOLE
 - 10 REMOVING SANITARY SEWER PIPE
 - 11 ABANDON SANITARY SEWER PIPE
 - 12 REMOVING FIRE HYDRANT
 - 13 REMOVING WATER METER BOX & METER SETTER* SALVAGING AND RESETTING EXISTING METER
 - 14 REMOVING WATER PIPE
 - 15 ABANDON WATER PIPE
 - 16 REMOVING BOULDERS*
 - 17 REMOVING AND RESETTING MAILBOX
 - 18 REMOVING RRFB
 - 19 REMOVING AND RESETTING ECOLOGY BLOCKS
 - 20 RETAIN & PROTECT RAILROAD GATE AND CROSSING ARM
 - 21 REMOVING LUMINAIRE (BY OTHERS)

- ### LEGEND
- REMOVING ASPHALT CONC. PAVEMENT
 - REMOVING CEMENT CONC. SIDEWALK
 - REMOVING CEMENT CONC. CURB OR CURB & GUTTER
 - SAWCUT LINE

- ### NOTES
1. RETAIN AND PROTECT ALL ITEMS NOT DESIGNATED FOR REMOVAL. ITEMS DESIGNATED WITH AN "*" ARE COVERED UNDER "REMOVAL OF STRUCTURES AND OBSTRUCTIONS."
 2. PAVED SURFACES PREDOMINATELY CONSIST OF HMA. REFER TO GEOTECHNICAL ENGINEERING EVALUATION FOR THE PROJECT FOR ADDITIONAL INFORMATION, INCLUDING GPR RESULTS WITH ESTIMATED THICKNESS.
 3. SEE CORRESPONDING PLAN SHEETS FOR REMOVAL ITEMS DESIGNATED FOR RELOCATION BY OTHERS OR BY CONTRACTOR. SEE SIGNING AND PAVEMENT MARKING PLANS FOR EXISTING SIGNS THAT WILL BE RESET IN A NEW LOCATION.
 4. SAWCUT ALL EXISTING ASPHALT AND CONCRETE WHERE JOINTS WITH CONSTRUCTION WILL OCCUR. DOUBLE SAW CUT REQUIRED FOR ALL LOCATIONS.
 5. REFER TO THE SPECIAL PROVISIONS FOR SALVAGE LOCATION OF ALL ITEMS. SALVAGEABLE MATERIALS FOR THE CITY SHALL BE TAKEN BY THE CONTRACTOR TO THE CITY OF WALLA WALLA SERVICE CENTER AT E 55 MOORE STREET AND SHALL REMAIN THE CITY'S PROPERTY. THESE ITEMS SHALL INCLUDE GRATES, LIDS, SIGNS, OR OTHER MATERIALS DIRECTED BY THE CITY.
 6. IRRIGATION SYSTEMS SHALL BE REPAIRED BEFORE THE WEEKEND.
 7. ALL ABANDONED UTILITIES WITHIN 5 FEET OF NEW UTILITIES SHALL BE REMOVED. ABANDONED UTILITY PIPES GREATER THAN 5 FEET FROM NEW UTILITIES SHALL BE CAPPED OR PLUGGED WATER TIGHT. ABANDONED STRUCTURES SHALL BE REMOVED TO A DEPTH OF 4 FEET BELOW FINISHED GRADE, PIPES CAPPED WATER TIGHT, THE BOTTOM OF THE STRUCTURE BROKEN TO ALLOW FOR DRAINAGE, AND THE REMAINING STRUCTURE FILLED WITH CSTC. REMOVE EXISTING SURFACE FEATURES OF ABANDONED LINES SUCH AS VALVES AND METER BOXES.
 8. REFER TO ILLUMINATION AND DRY UTILITY PLANS FOR RELOCATIONS AND REMOVALS BY OTHERS. THE CONTRACTOR WILL COORDINATE WORK PERFORMED BY OTHER UTILITY COMPANIES.
 9. ABANDONED SANITARY SEWER, WATER MAINLINES AND FIRE SERVICES WILL BE CAPPED OR PLUGGED.

Plot Date: 10/1/2024 2:17 PM
 Save Date: 10/1/2024 1:19 PM
 By: Alex Raymond
 File: P:\WALLA\000000114\04\CAD\SHSHEETS\EC-SP-WALLA14.dwg

PRELIMINARY



DESIGNED BY:	HRC			
DETAILED BY:	LXHE			
CHECKED BY:	DLWI			
REVISION LOG				
NO.	DATE	REVISION	BY	CK







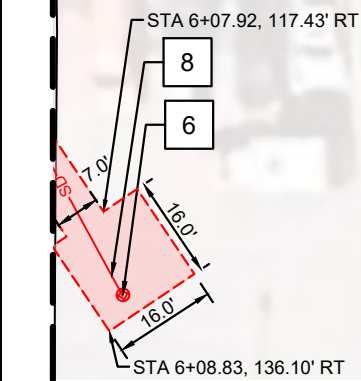
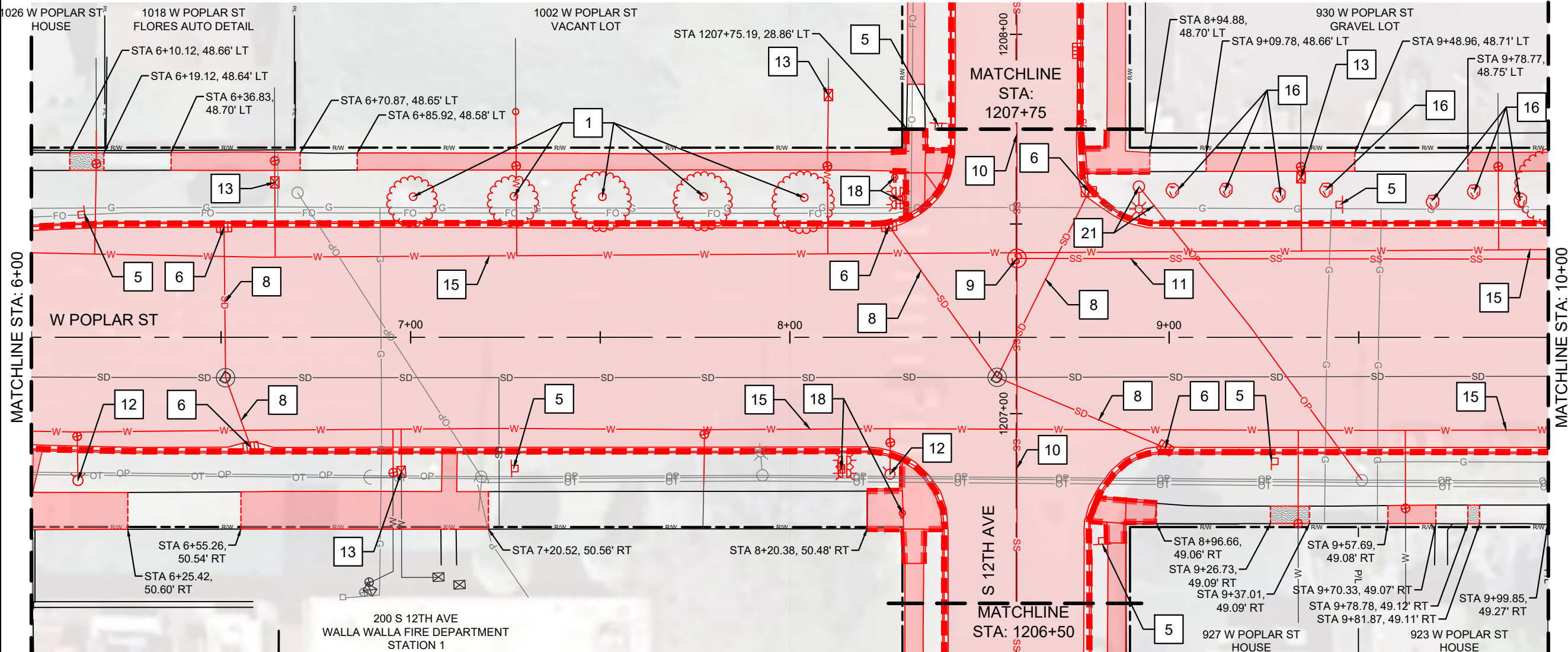
POPLAR STREET IRRP - 5TH TO 14TH		DATE:	10/1/24
FEDERAL-AID NO. _____		PROJECT NO.	_____
SITE PREPARATION PLAN		SHEET NO.	7 OF 99
POPLAR STA 2+70 TO STA 6+00		SP1	
CITY OF WALLA WALLA	WASHINGTON		

SITE PREP NOTES

- 1 REMOVING TREE
- 2 PRUNE TREE
- 3 REMOVING TRAFFIC SIGNAL
- 4 REMOVING AND SALVAGE SIGNAL CABINET
- 5 REMOVING TRAFFIC SIGN*
- 6 REMOVING CONC. INLET
- 7 REMOVING STORM MANHOLE
- 8 REMOVING STORM DRAIN PIPE
- 9 REMOVING SANITARY SEWER MANHOLE
- 10 REMOVING SANITARY SEWER PIPE
- 11 ABANDON SANITARY SEWER PIPE
- 12 REMOVING FIRE HYDRANT
- 13 REMOVING WATER METER BOX & METER SETTER* SALVAGING AND RESETTING EXISTING METER
- 14 REMOVING WATER PIPE
- 15 ABANDON WATER PIPE
- 16 REMOVING BOULDERS*
- 17 REMOVING AND RESETTING MAILBOX
- 18 REMOVING RRFB
- 19 REMOVING AND RESETTING ECOLOGY BLOCKS
- 20 RETAIN & PROTECT RAILROAD GATE AND CROSSING ARM
- 21 REMOVING LUMINAIRE (BY OTHERS)

LEGEND

-  REMOVING ASPHALT CONC. PAVEMENT
-  REMOVING CEMENT CONC. SIDEWALK
-  REMOVING CEMENT CONC. CURB OR CURB & GUTTER
-  SAWCUT LINE

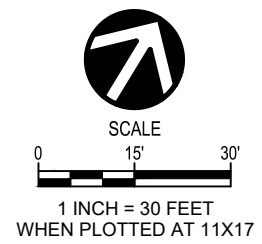


NOTES

1. RETAIN AND PROTECT ALL ITEMS NOT DESIGNATED FOR REMOVAL. ITEMS DESIGNATED WITH AN "*" ARE COVERED UNDER "REMOVAL OF STRUCTURES AND OBSTRUCTIONS."
2. PAVED SURFACES PREDOMINATELY CONSIST OF HMA. REFER TO GEOTECHNICAL ENGINEERING EVALUATION FOR THE PROJECT FOR ADDITIONAL INFORMATION, INCLUDING GPR RESULTS WITH ESTIMATED THICKNESS.
3. SEE CORRESPONDING PLAN SHEETS FOR REMOVAL ITEMS DESIGNATED FOR RELOCATION BY OTHERS OR BY CONTRACTOR. SEE SIGNING AND PAVEMENT MARKING PLANS FOR EXISTING SIGNS THAT WILL BE RESET IN A NEW LOCATION.
4. SAWCUT ALL EXISTING ASPHALT AND CONCRETE WHERE JOINTS WITH CONSTRUCTION WILL OCCUR. DOUBLE SAW CUT REQUIRED FOR ALL LOCATIONS.
5. REFER TO THE SPECIAL PROVISIONS FOR SALVAGE LOCATION OF ALL ITEMS. SALVAGEABLE MATERIALS FOR THE CITY SHALL BE TAKEN BY THE CONTRACTOR TO THE CITY OF WALLA WALLA SERVICE CENTER AT E 55 MOORE STREET AND SHALL REMAIN THE CITY'S PROPERTY. THESE ITEMS SHALL INCLUDE GRATES, LIDS, SIGNS, OR OTHER MATERIALS DIRECTED BY THE CITY.
6. IRRIGATION SYSTEMS SHALL BE REPAIRED BEFORE THE WEEKEND.
7. ALL ABANDONED UTILITIES WITHIN 5 FEET OF NEW UTILITIES SHALL BE REMOVED. ABANDONED UTILITY PIPES GREATER THAN 5 FEET FROM NEW UTILITIES SHALL BE CAPPED OR PLUGGED WATER TIGHT. ABANDONED STRUCTURES SHALL BE REMOVED TO A DEPTH OF 4 FEET BELOW FINISHED GRADE, PIPES CAPPED WATER TIGHT, THE BOTTOM OF THE STRUCTURE BROKEN TO ALLOW FOR DRAINAGE, AND THE REMAINING STRUCTURE FILLED WITH CSTC. REMOVE EXISTING SURFACE FEATURES OF ABANDONED LINES SUCH AS VALVES AND METER BOXES.
8. REFER TO ILLUMINATION AND DRY UTILITY PLANS FOR RELOCATIONS AND REMOVALS BY OTHERS. THE CONTRACTOR WILL COORDINATE WORK PERFORMED BY OTHER UTILITY COMPANIES.
9. ABANDONED SANITARY SEWER, WATER MAINLINES AND FIRE SERVICES WILL BE CAPPED OR PLUGGED.

Plot Date: 10/1/2024 2:17 PM
 Save Date: 10/1/2024 1:19 PM
 By: Alex Raymond
 File: P:\WVWAL\A000000114\0400CAD\SHSHEETS\SEC-SP-WALA14.dwg

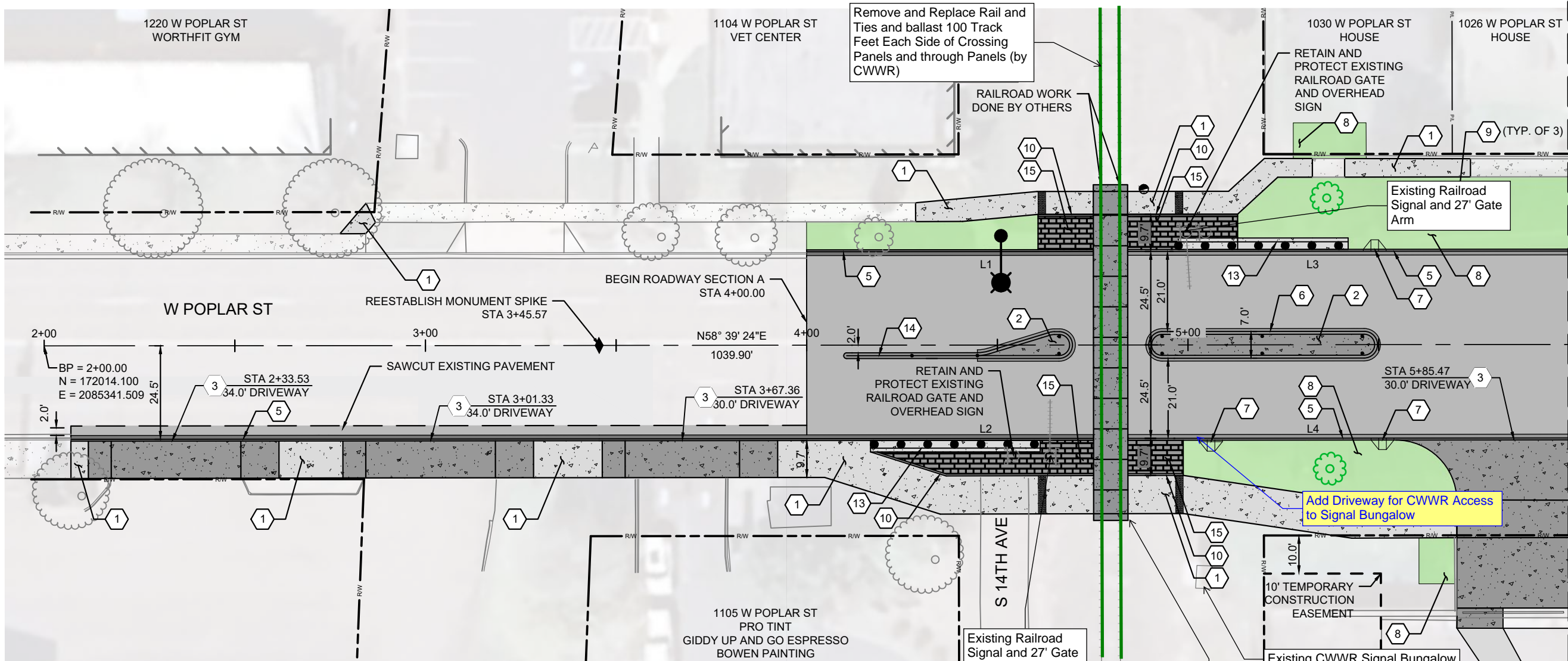
PRELIMINARY



DESIGNED BY: HRC		BY		CK	
DETAILED BY: LXHE					
CHECKED BY: DLWI					
REVISION LOG					
NO.	DATE	REVISION			

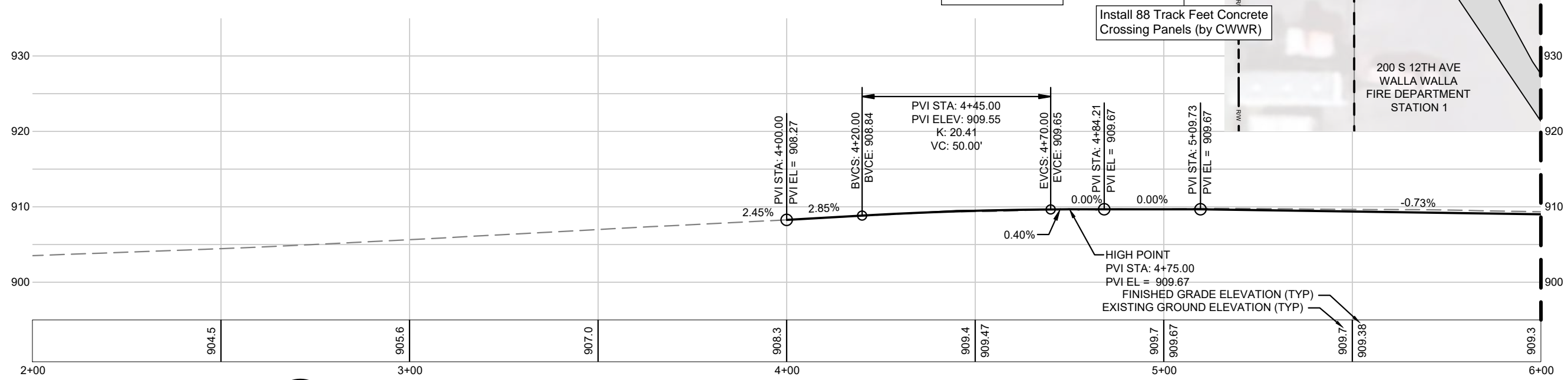


POPLAR STREET IRRP - 5TH TO 14TH		DATE: 10/1/24
FEDERAL-AID NO. _____		PROJECT NO. _____
SITE PREPARATION PLAN		
POPLAR STA 6+00 TO STA 10+00		
CITY OF WALLA WALLA	WASHINGTON	SHEET NO. 8 OF 99
		SP2



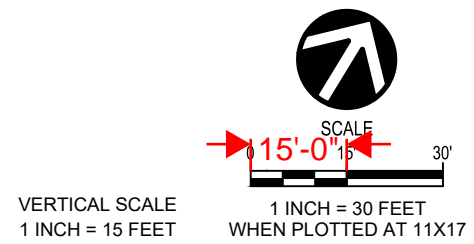
- ### KEY NOTES
- 1 CEMENT CONC. SIDEWALK, 4"
 - 2 CEMENT CONC. SIDEWALK, 6"
 - 3 CEMENT CONC. DRIVEWAY ENTRANCE, 6", INCLUDES ADJACENT SIDEWALK
 - 4 CEMENT CONC. CURB RAMP, TYPE PERPENDICULAR
 - 5 CEMENT CONC. TRAFFIC CURB & GUTTER
 - 6 CEMENT CONC. ROLLED CURB & GUTTER
 - 7 CEMENT CONC. CURB CUT
 - 8 PLANTER / LANDSCAPE RESTORATION
 - 9 PROP. TREE, 2" CALIPER
 - 10 CEMENT CONC. PEDESTRIAN CURB
 - 11 DUAL-SIDED AC POWERED RAPID RECTANGULAR FLASHING BEACON (RRFB)
 - 12 CEMENT CONC. CURB RAMP, TYPE MEDIAN CUT-THROUGH
 - 13 PINNED CONCRETE BARRIER TYPE F PER WSDOT STD. PLAN C-60.10-04.
 - 14 6" DUAL-FACED CONC. TRAFFIC CURB PER WSDOT STD. PLAN F-10.12-04
 - 15 CEMENT CONC. PAVERS

- ### NOTES
1. DIMENSIONS AT CURB LOCATIONS ARE TO FACE OF CURB.
 2. ALL DRIVEWAY LOCATIONS SHALL BE STAKED BY THE CONTRACTOR AND APPROVED BY THE ENGINEER PRIOR TO EXCAVATION AND CONSTRUCTION.
 3. ALL DRIVEWAY AND ADA RAMP STATIONING IS TO CENTER OF DRIVEWAY/ADA RAMP.
 4. REFER TO LINE (L) AND CURVE (C) TABLES AT THE END OF THE PLAN AND PROFILE SHEETS FOR LENGTH, BEARING, RADIUS, AND DELTA INFORMATION.
 5. REFER TO DRAINAGE & CONTOUR GRADING PLANS FOR SWALE GRADING REQUIREMENTS IN PLANTER.



Plot Date: 10/1/2024 2:18 PM
 Save Date: 10/1/2024 1:42 PM
 By: Alex Raymond
 By: Alva
 File: P:\W\W\W\A\000000114\04\00\CAD\SHSHEETS\EC-PP-WALA14.dwg

PRELIMINARY



DESIGNED BY: HRC
 DETAILED BY: AWRA
 CHECKED BY: DLWI

REVISION LOG			BY	CK
NO.	DATE	REVISION		



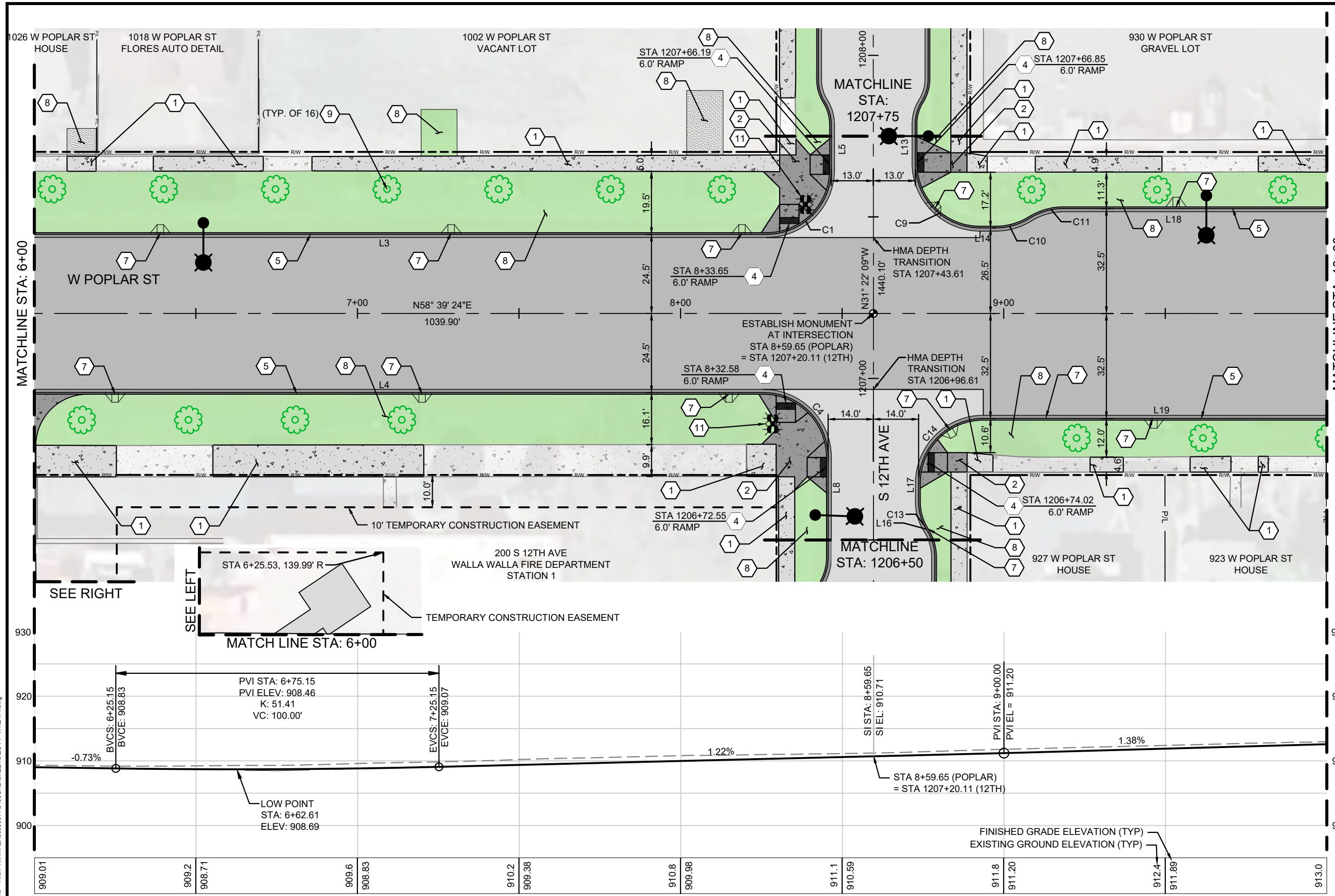
POPLAR STREET IRRP - 5TH TO 14TH
FEDERAL-AID NO. _____

ROADWAY PLAN & PROFILE
 POPLAR STA 2+00 TO STA 6+00

CITY OF WALLA WALLA WASHINGTON

DATE: 10/1/24
PROJECT NO.:
SHEET NO. 18 OF 99

RP1



- ### KEY NOTES
- CEMENT CONC. SIDEWALK, 4"
 - CEMENT CONC. SIDEWALK, 6"
 - CEMENT CONC. DRIVEWAY ENTRANCE, 6", INCLUDES ADJACENT SIDEWALK
 - CEMENT CONC. CURB RAMP, TYPE PERPENDICULAR
 - CEMENT CONC. TRAFFIC CURB & GUTTER
 - CEMENT CONC. ROLLED CURB & GUTTER
 - CEMENT CONC. CURB CUT
 - PLANTER / LANDSCAPE RESTORATION
 - PROP. TREE, 2" CALIPER
 - CEMENT CONC. PEDESTRIAN CURB
 - DUAL-SIDED AC POWERED RAPID RECTANGULAR FLASHING BEACON (RRFB)
 - CEMENT CONC. CURB RAMP, TYPE MEDIAN CUT-THROUGH
 - PINNED CONCRETE BARRIER TYPE F PER WSDOT STD. PLAN C-60.10-04.
 - 6" DUAL-FACED CONC. TRAFFIC CURB PER WSDOT STD. PLAN F-10.12-04
 - CEMENT CONC. PAVERS

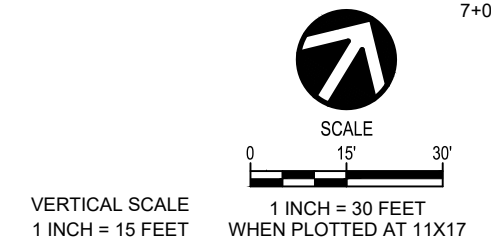
- ### NOTES
- DIMENSIONS AT CURB LOCATIONS ARE TO FACE OF CURB.
 - ALL DRIVEWAY LOCATIONS SHALL BE STAKED BY THE CONTRACTOR AND APPROVED BY THE ENGINEER PRIOR TO EXCAVATION AND CONSTRUCTION.
 - ALL DRIVEWAY AND ADA RAMP STATIONING IS TO CENTER OF DRIVEWAY/ADA RAMP.
 - REFER TO LINE (L) AND CURVE (C) TABLES AT THE END OF THE PLAN AND PROFILE SHEETS FOR LENGTH, BEARING, RADIUS, AND DELTA INFORMATION.
 - REFER TO DRAINAGE & CONTOUR GRADING PLANS FOR SWALE GRADING REQUIREMENTS IN PLANTER.

S 12TH AVE ALIGNMENT TABLE

POINT	BP	EP
STA	1200+00.00	1214+40.10
N	171742.379	172971.978
E	2086279.747	2085530.107

Plot Date: 10/1/2024 2:18 PM
 Save Date: 10/1/2024 1:42 PM
 By: Alex Raymond
 File: P:\WALLA\000000114\0400CAD\SHETS\SEC-PP-WALA14.dwg

PRELIMINARY



DESIGNED BY: HRC
 DETAILED BY: AWRA
 CHECKED BY: DLWI

REVISION LOG			BY	CK
NO.	DATE	REVISION		

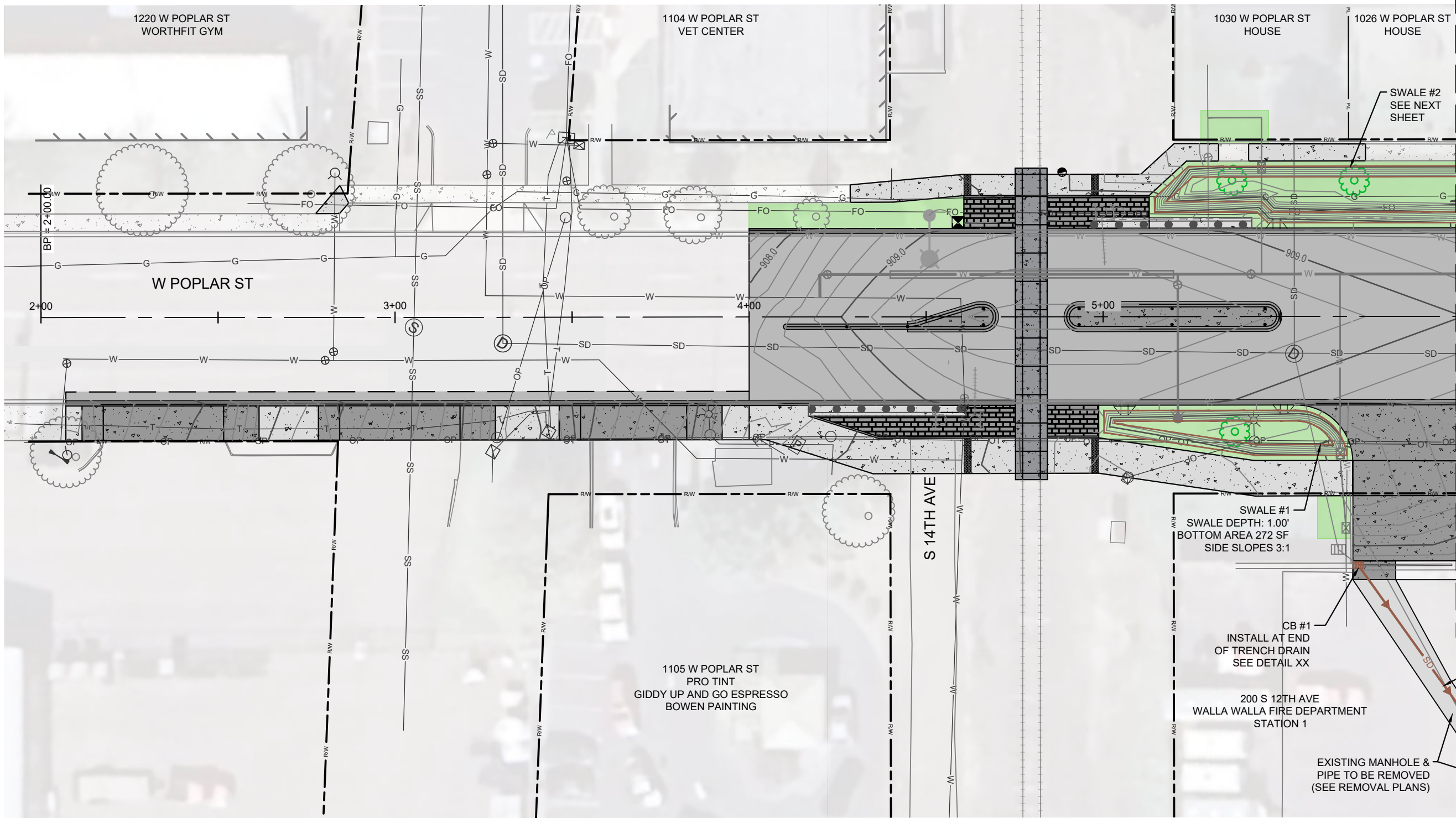


POPLAR STREET IRRP - 5TH TO 14TH
 FEDERAL-AID NO. _____

ROADWAY PLAN & PROFILE
 POPLAR STA 6+00 TO STA 10+00

CITY OF WALLA WALLA WASHINGTON

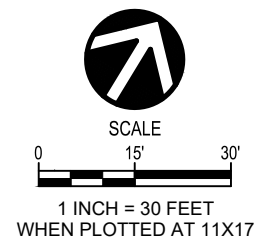
DATE: 10/1/24
 PROJECT NO. _____
 SHEET NO. 19 OF 99
RP2



MATCHLINE STA: 4+00

Plot Date: 10/1/2024 3:49 PM
 Save Date: 10/1/2024 3:35 PM
 By: Alex Raymond
 File: P:\W\W\W\A\000000114\0400CAD\SHETS\EC-DR-WALA14.dwg

PRELIMINARY



DESIGNED BY: HRC				
DETAILED BY: AWRA				
CHECKED BY: DLWI				
REVISION LOG			BY	CK
NO.	DATE	REVISION		

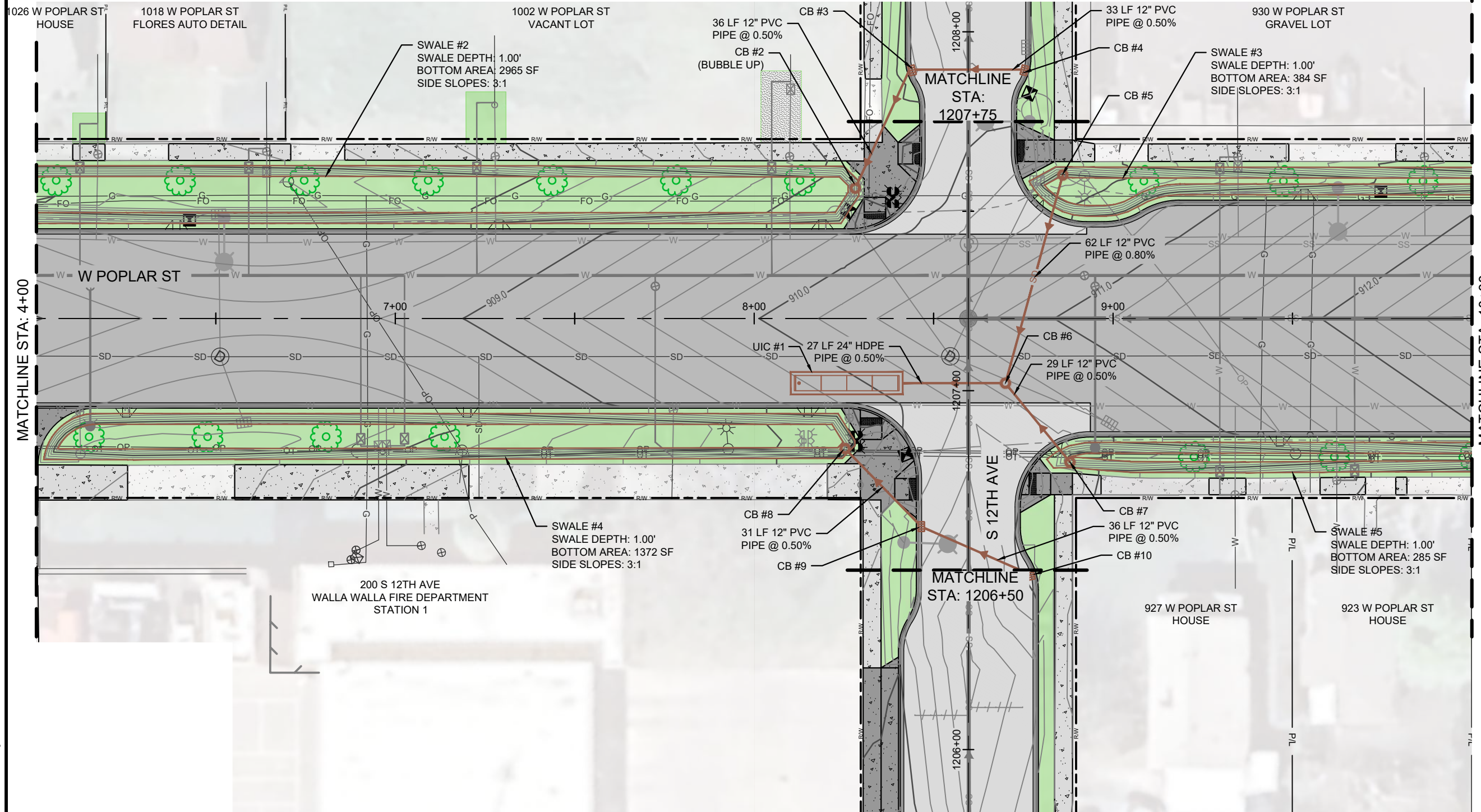


POPLAR STREET IRRP - 5TH TO 14TH
 FEDERAL-AID NO. _____

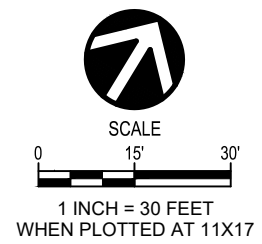
DRAINAGE AND CONTOUR GRADING PLAN
 POPLAR STA 2+00 TO STA 6+00

CITY OF WALLA WALLA WASHINGTON

DATE: 10/1/24
 PROJECT NO. _____
 SHEET NO. 35 OF 99
DR1



PRELIMINARY



DESIGNED BY: HRC				
DETAILED BY: AWRA				
CHECKED BY: DLWI				
REVISION LOG				
NO.	DATE	REVISION	BY	CK



POPLAR STREET IRRP - 5TH TO 14TH
FEDERAL-AID NO. _____

DRAINAGE AND CONTOUR GRADING PLAN
POPLAR STA 4+00 TO STA 10+00

CITY OF WALLA WALLA WASHINGTON

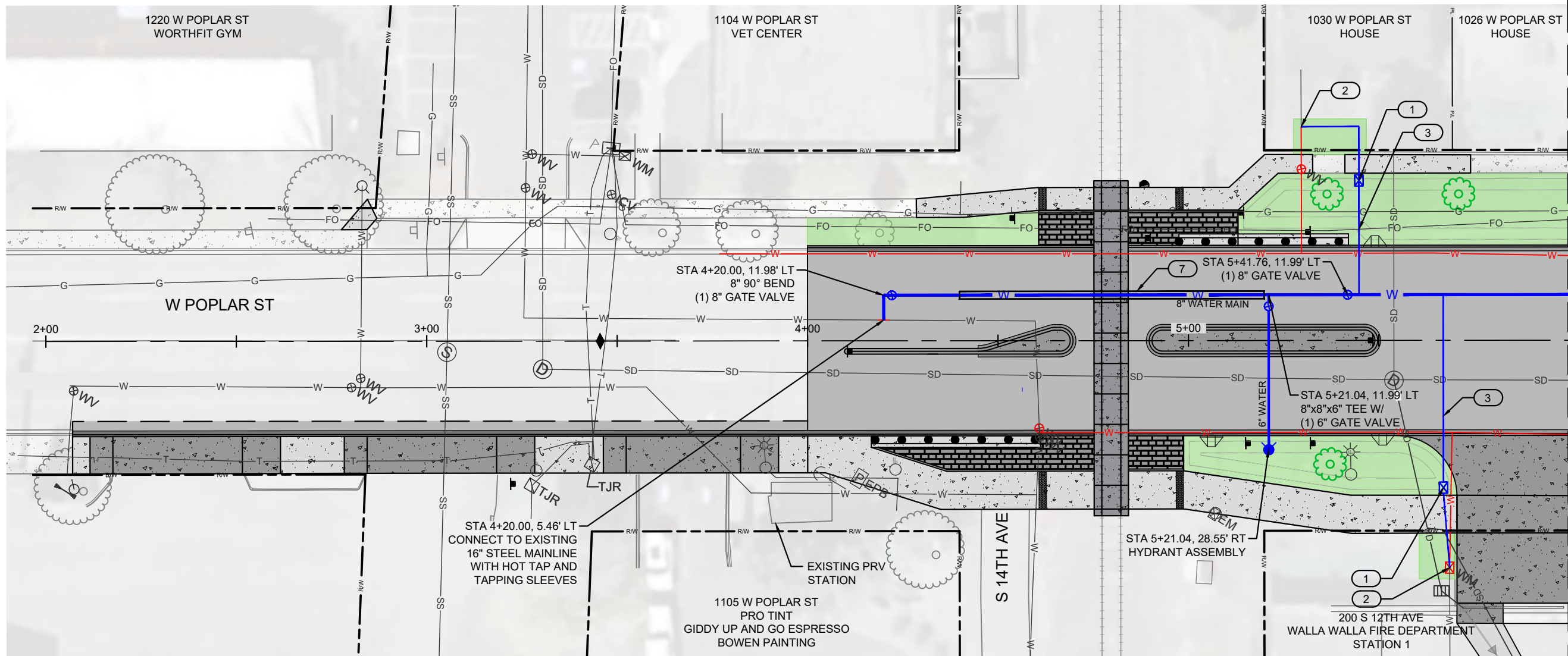
DATE: 10/1/24

PROJECT NO. _____

SHEET NO. 36 OF 99

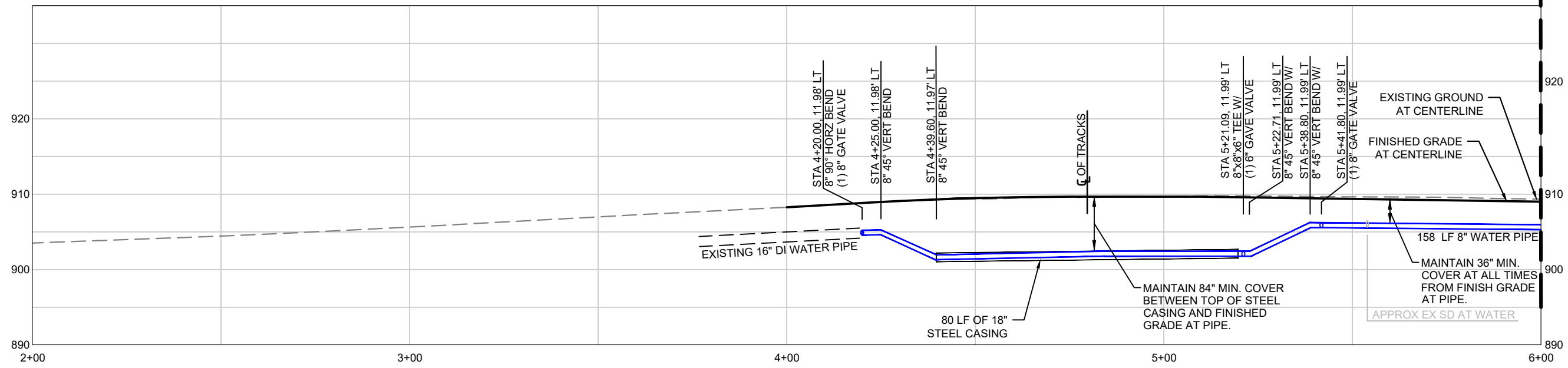
DR2

Plot Date: 10/1/2024 3:49 PM
 Save Date: 10/1/2024 3:35 PM
 By: Alex Raymond
 File: P:\WALLA\000000110400CAD\SHETS\SEC-DR-WALA14.dwg



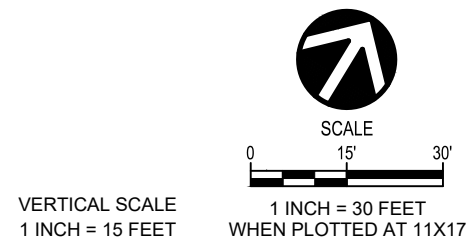
- ### UTILITY KEY NOTES
- 1 INSTALL WATER METER VAULT AND WATER METER SETTER PER CITY OF WALLA WALLA STD PLANS 4-3a-d BASED ON SIZE OF SERVICE. RESET EXISTING WATER METER.
 - 2 RECONNECT TO EXISTING WATER SERVICE.
 - 3 INSTALL WATER SERVICE PER CITY OF WALLA WALLA STD PLAN 4-1. (SEE WATER SERVICE TABLE, SHEET UT16 TO UT17 FOR SERVICE SIZE)
 - 4 INSTALL FIRE HYDRANT ASSEMBLY PER CITY OF WALLA WALLA STD PLAN 4-5.
 - 5 CONNECT TO EXISTING FIRE SERVICE LINE.
 - 6 INSTALL 48" DIA. SEWER MANHOLE PER CITY OF WALLA WALLA STD PLAN 3-3.
 - 7 REFER TO PIPE CROSSING ENCASUREMENT DETAIL (INCLUDED WITH 90% DESIGN)
 - 8 STUB AND CAP BEHIND SIDEWALK
 - 9 REMOVE ALL CONFLICTING EXISTING WATER SERVICES

- ### GENERAL NOTES
1. OVERHEAD UTILITY LINES ARE NOT SHOWN FOR CLARITY. SEE THE ILLUMINATION AND DRY UTILITY PLANS FOR OVERHEAD UTILITY FACILITIES.
 2. SEE SITE PREPARATION PLANS FOR SANITARY SEWER AND WATERLINE REMOVAL OR ABANDON LOCATIONS.
 3. REMOVE EXISTING SURFACE FEATURES OF ABANDONED LINES SUCH AS VALVES AND METER BOXES.



Plot Date: 10/1/2024 2:25 PM
 Save Date: 10/1/2024 1:10 PM
 By: Alex Raymond
 File: P:\WALLA\00000014\040CAD\SHSHEETS\EC-UT-WALLA14.dwg

PRELIMINARY

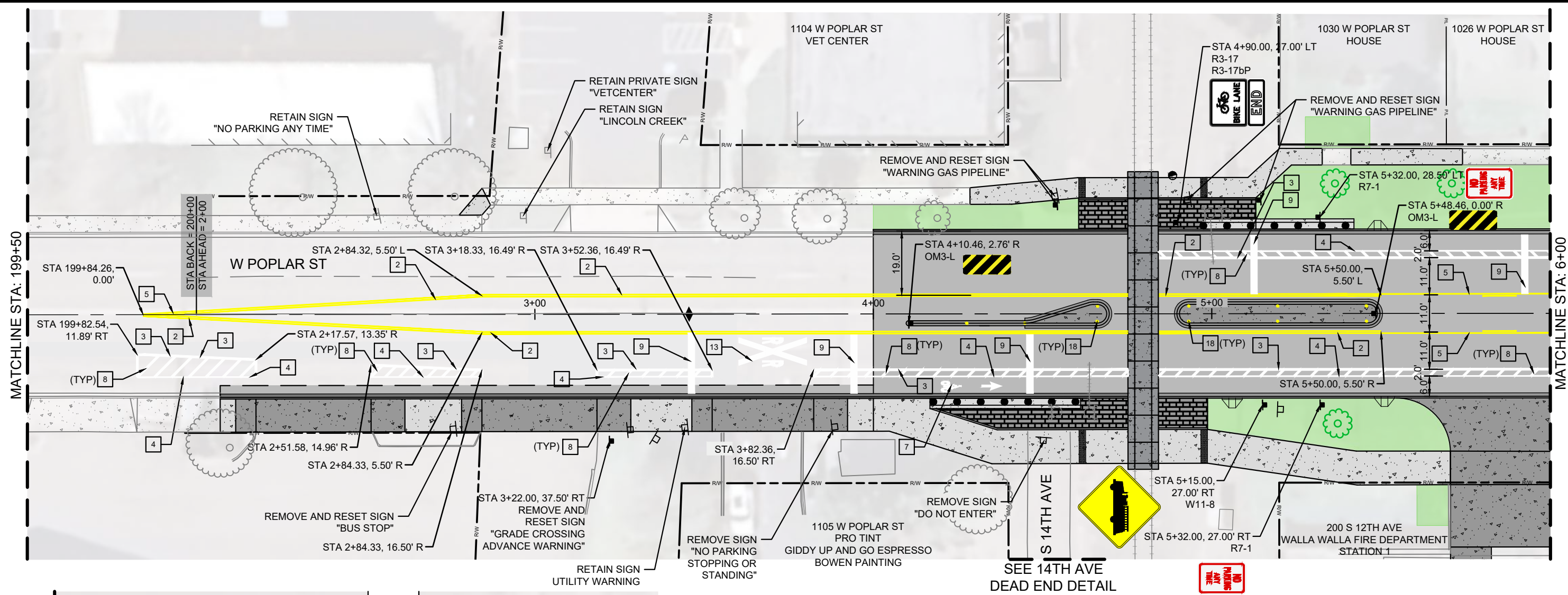


DESIGNED BY: BEC				
DETAILED BY: LXHE				
CHECKED BY: HRC				
REVISION LOG				
NO.	DATE	REVISION	BY	CK



POPLAR STREET IRRP - 5TH TO 14TH
 FEDERAL-AID NO. _____
SEWER AND WATER PLAN AND PROFILE
 POPLAR STA 2+00 TO STA 6+00
 CITY OF WALLA WALLA WASHINGTON

DATE: 10/1/24
 PROJECT NO. _____
 SHEET NO. 55 OF 99
UT1



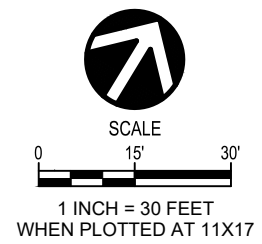
14TH AVE DEAD END DETAIL

GENERAL STRIPING NOTES

1. THE LOCATION OF ALL PAVEMENT MARKINGS MUST BE APPROVED BY THE ENGINEER PRIOR TO INSTALLATION.
2. THE CONTRACTOR SHALL REMOVE ALL EXISTING PAVEMENT MARKINGS THAT CONFLICT WITH THE PROPOSED PAVEMENT MARKINGS PER WSDOT STD SPEC 8-22.3(6). REMOVALS SHALL BE MADE USING HYDROBLASTING TO COMPLETELY REMOVE THE EXISTING STRIPE. THIS IS INCIDENTAL TO OTHER WORK.
3. ALL TRAFFIC MARKINGS SHALL BE WSDOT TYPE B PRE-FORMED FUSED VISZIGRIP (NONSKID + GLASS BEADS) THERMOPLASTIC.
4. STRIPING ON NEW HMA SHALL BE WSDOT TYPE C COLD APPLIED PRE-FORMED TAPE AND STRIPING ON EXISTING HMA SHALL BE WSDOT TYPE A LIQUID HOT APPLIED THERMOPLASTIC.

STRIPING KEY NOTES

1	8" WHITE DOTTED LANE LINE, WSDOT STD PLAN M-20.10-04
2	4" YELLOW DOUBLE CENTERLINE, WSDOT STD PLAN M-20.10-04
3	8" WHITE WIDE SOLID LANE LINE, WSDOT STD PLAN M-20.10-04
4	4" WHITE EDGE LINE, WSDOT STD PLAN M-20.10-04
5	4" YELLOW TWO-WAY LEFT-TURN CENTERLINE, WSDOT STD PLAN M-20.10-04
6	TYPE 2SL (LEFT) TRAFFIC ARROW LOW-SPEED, WSDOT STD PLAN M-24.40-02
7	BICYCLE LANE SYMBOL, WSDOT STD PLAN M-9.50-02
8	CROSSHATCH MARKING, WSDOT STD PLAN M-24.60-04
9	24" STOP LINE, WSDOT STD PLAN M-24.60-04
10	CROSSWALK, WSDOT STD PLAN M-15.10-02
11	4" WHITE DOTTED LANE LINE, WSDOT STD PLAN M-20.10-04
12	TYPE 2SR (RIGHT) TRAFFIC ARROW LOW-SPEED, WSDOT STD PLAN M-24.40-02
13	LAYOUT A GRADE CROSSING SYMBOL, WSDOT STD PLAN M-11.10-04
14	TYPE 6SL (LEFT) TRAFFIC ARROW LOW-SPEED, WSDOT STD PLAN M-24.40-02
15	4" WHITE LANE LINE, WSDOT STD PLAN M-20.10-04
16	BIKE LANE EXTENSION - GREEN
17	LEFT TURN BIKE BOX (DETAIL TO BE PROVIDED AT 90%)
18	TUBULAR MARKERS



DESIGNED BY:	AOW			
DETAILED BY:	AWRA			
CHECKED BY:	LEV			
REVISION LOG				
NO.	DATE	REVISION	BY	CK



POPLAR STREET IRRP - 5TH TO 14TH
FEDERAL-AID NO. _____

SIGNING & PAVEMENT MARKING PLAN
POPLAR STA 199+50 TO 6+00

CITY OF WALLA WALLA WASHINGTON

DATE: 10/1/24
PROJECT NO. _____
SHEET NO. 73 OF 99
PM1B

Plot Date: 10/1/2024 3:52 PM
 Save Date: 10/1/2024 3:35 PM
 By: Alex Raymond
 File: P:\WV\WV\A\0000001104\00CAD\SHHEETS\EC-FM-WALA14.dwg

PRELIMINARY

1026 W POPLAR ST HOUSE

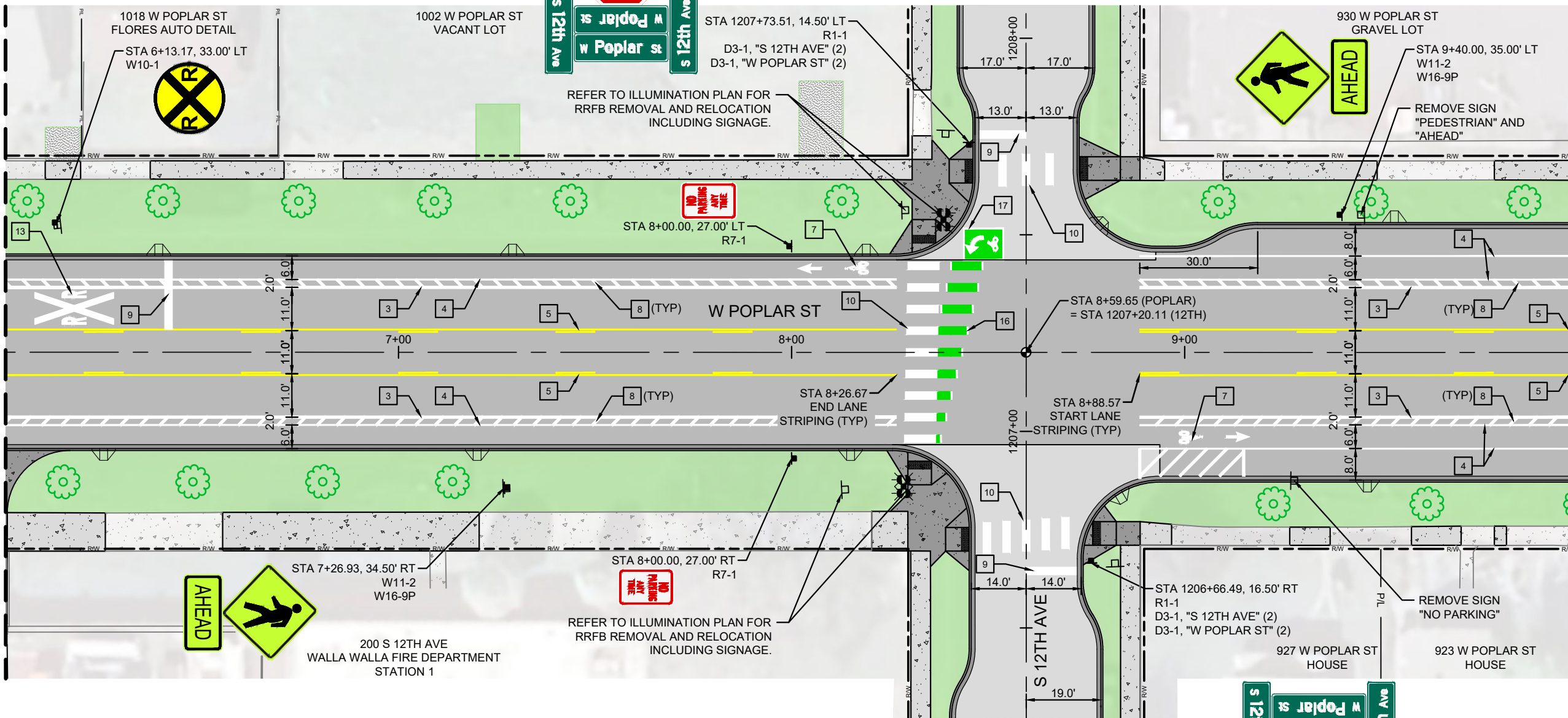
1018 W POPLAR ST FLORES AUTO DETAIL

1002 W POPLAR ST VACANT LOT

930 W POPLAR ST GRAVEL LOT

MATCHLINE STA: 6+00

MATCHLINE STA: 10+00



GENERAL STRIPING NOTES

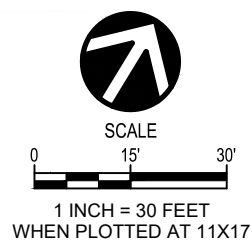
1. THE LOCATION OF ALL PAVEMENT MARKINGS MUST BE APPROVED BY THE ENGINEER PRIOR TO INSTALLATION.
2. THE CONTRACTOR SHALL REMOVE ALL EXISTING PAVEMENT MARKINGS THAT CONFLICT WITH THE PROPOSED PAVEMENT MARKINGS PER WSDOT STD SPEC 8-22.3(6). REMOVALS SHALL BE MADE USING HYDROBLASTING TO COMPLETELY REMOVE THE EXISTING STRIPE. THIS IS INCIDENTAL TO OTHER WORK.
3. ALL TRAFFIC MARKINGS SHALL BE WSDOT TYPE B PRE-FORMED FUSED VISIZGRIP (NONSKID + GLASS BEADS) THERMOPLASTIC.
4. STRIPING ON NEW HMA SHALL BE WSDOT TYPE C COLD APPLIED PRE-FORMED TAPE AND STRIPING ON EXISTING HMA SHALL BE WSDOT TYPE A LIQUID HOT APPLIED THERMOPLASTIC.

STRIPING KEY NOTES

- | | |
|----|---|
| 1 | 8" WHITE DOTTED LANE LINE, WSDOT STD PLAN M-20.10-04 |
| 2 | 4" YELLOW DOUBLE CENTERLINE, WSDOT STD PLAN M-20.10-04 |
| 3 | 8" WHITE WIDE SOLID LANE LINE, WSDOT STD PLAN M-20.10-04 |
| 4 | 4" WHITE EDGE LINE, WSDOT STD PLAN M-20.10-04 |
| 5 | 4" YELLOW TWO-WAY LEFT-TURN CENTERLINE, WSDOT STD PLAN M-20.10-04 |
| 6 | TYPE 2SL (LEFT) TRAFFIC ARROW LOW-SPEED, WSDOT STD PLAN M-24.40-02 |
| 7 | BICYCLE LANE SYMBOL, WSDOT STD PLAN M-9.50-02 |
| 8 | CROSSHATCH MARKING, WSDOT STD PLAN M-24.60-04 |
| 9 | 24" STOP LINE, WSDOT STD PLAN M-24.60-04 |
| 10 | CROSSWALK, WSDOT STD PLAN M-15.10-02 |
| 11 | 4" WHITE DOTTED LANE LINE, WSDOT STD PLAN M-20.10-04 |
| 12 | TYPE 2SR (RIGHT) TRAFFIC ARROW LOW-SPEED, WSDOT STD PLAN M-24.40-02 |

- | | |
|----|--|
| 13 | LAYOUT A GRADE CROSSING SYMBOL, WSDOT STD PLAN M-11.10-04 |
| 14 | TYPE 6SL (LEFT) TRAFFIC ARROW LOW-SPEED, WSDOT STD PLAN M-24.40-02 |
| 15 | 4" WHITE LANE LINE, WSDOT STD PLAN M-20.10-04 |
| 16 | BIKE LANE EXTENSION - GREEN |
| 17 | LEFT TURN BIKE BOX (DETAIL TO BE PROVIDED AT 90%) |
| 18 | TUBULAR MARKERS |

PRELIMINARY



DESIGNED BY: AOW		
DETAILED BY: AWRA		
CHECKED BY: LEV		
REVISION LOG	BY	CK
NO. DATE REVISION		



POPLAR STREET IRRP - 5TH TO 14TH
FEDERAL-AID NO. _____

SIGNING & PAVEMENT MARKING PLAN
POPLAR STA 6+00 TO 10+00

CITY OF WALLA WALLA WASHINGTON

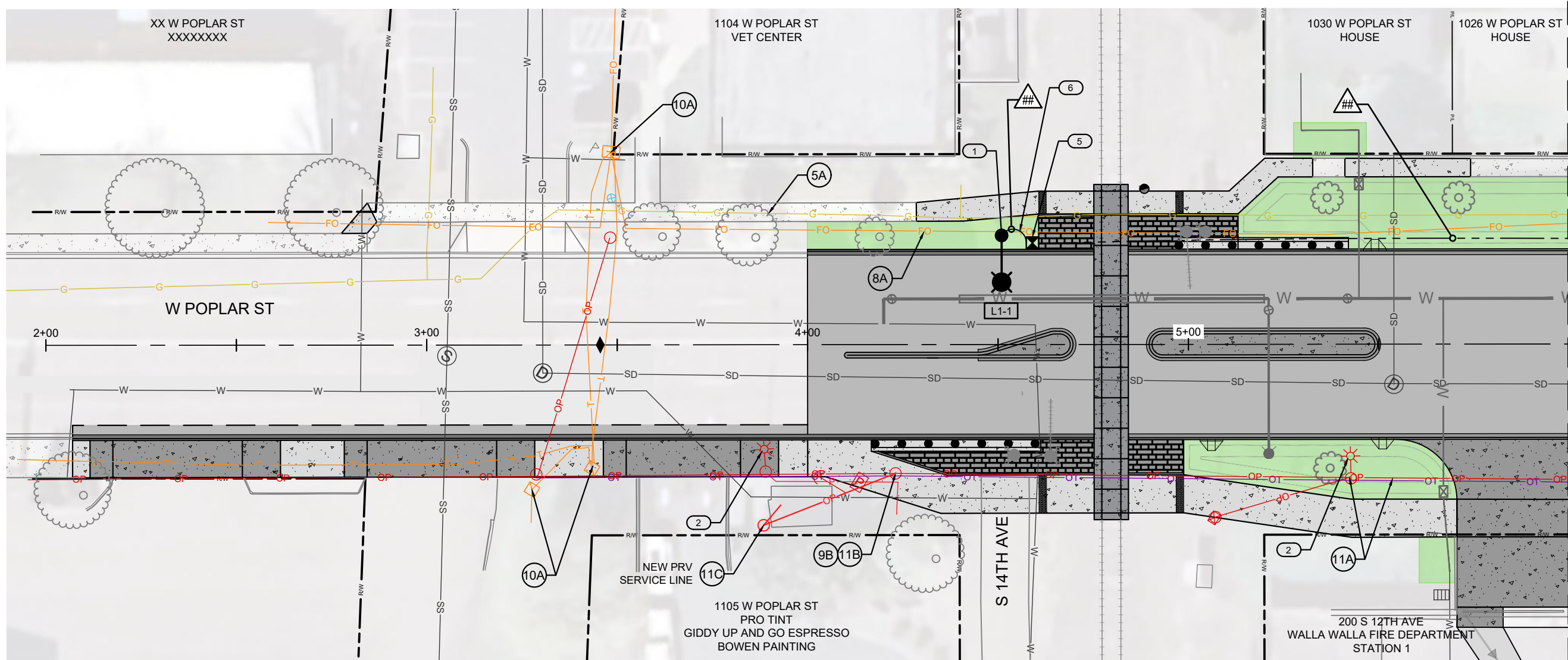
DATE: 10/1/24

PROJECT NO. _____

SHEET NO. 74 OF 99

PM2

Plot Date: 10/1/2024 2:28 PM
 Save Date: 10/1/2024 2:08 PM
 By: Alex Raymond
 File: P:\WV\WV\000000114\0400CAD\SHETS\SEC-FM-WALA14.dwg



- ### UTILITY KEY NOTES
- (A) RETAIN AND PROTECT
 - (B) RELOCATE
 - (C) PROPOSED
 - (1) PROVIDENCE UG FIBER
 - (2) CITY OF WALLA WALLA OH FIBER COMM.
 - (3) CITY OF WALLA WALLA UG FIBER COMM.
 - (4) CITY OF WALLA WALLA UG POWER/ILLUMINATION
 - (5) CASCADE NATURAL GAS
 - (6) COLUMBIA RURAL ELECTRIC
 - (7) LUMEN OH FIBER OPTIC
 - (8) LUMEN UG FIBER OPTIC
 - (9) LUMEN OH COMMUNICATIONS
 - (10) LUMEN UG COMMUNICATIONS
 - (11) PACIFIC POWER OH
 - (12) PACIFIC POWER UG
 - (13) CHARTER COMMUNICATIONS OH FIBER OPTIC COMM.
 - (14) CHARTER COMMUNICATIONS UG FIBER OPTIC COMM.
 - (15) NOANET OH FIBER COMM.
 - (16) POCKET I NET OH FIBER COMM.
- ### NOTES:
- EXISTING WATER, SANITARY SEWER, AND STORM DRAIN LINES AND STRUCTURES SCHEDULED FOR ABANDONMENT OR REMOVAL ARE NOT SHOWN FOR CLARITY.
 - REFER TO IL9 FOR ILLUMINATION CONSTRUCTION NOTES AND GENERAL NOTES.

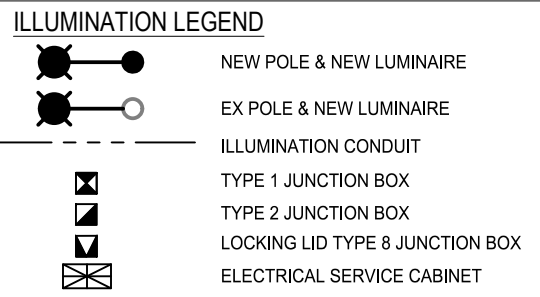
LUMINAIRE SCHEDULE

NO.	ALIGNMENT	STATION, OFFSET	MAST ARM LENGTH (FT)	LUMINAIRE MOUNTING HEIGHT (FT)	LUMINAIRE WATTS/VOLTS	POLE TYPE	COMMENTS
L1-1	W POPLAR ST	04+55.6, 28.5' LT	10'	35'	120W / 120V	STEEL TYPE I	

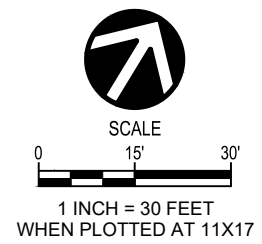
WIRING SCHEDULE

RUN NO.	CONDUIT SIZE (IN)	CIRCUIT	CONDUCTOR SIZE (AWG)	COMMENTS
1	2" PVC			
2	2" PVC			
3	1" PVC			
4	3" PVC			
5	3" PVC			
6	2" PVC			
7	2" PVC			

DESIGNER NOTE: TO BE UPDATED AT 90%



PRELIMINARY



DESIGNED BY: AOW
 DETAILED BY: AWRA & DRDO
 CHECKED BY: LEV

REVISION LOG			BY	CK
NO.	DATE	REVISION		



POPLAR STREET IRRP - 5TH TO 14TH
 FEDERAL-AID NO. _____

ILLUMINATION & DRY UTILITY PLAN
 POPLAR STA 2+70 TO STA 6+00

CITY OF WALLA WALLA WASHINGTON

DATE: 10/1/24
 PROJECT NO. _____
 SHEET NO. 82 OF 99
IL1

Plot Date: 10/1/2024 2:31 PM
 Save Date: 9/30/2024 6:06 PM
 By: Alex Raymond
 File: P:\WALLA\000000114\04\00CAD\SHSHEETS\EC-LL-WALLA-14.dwg