



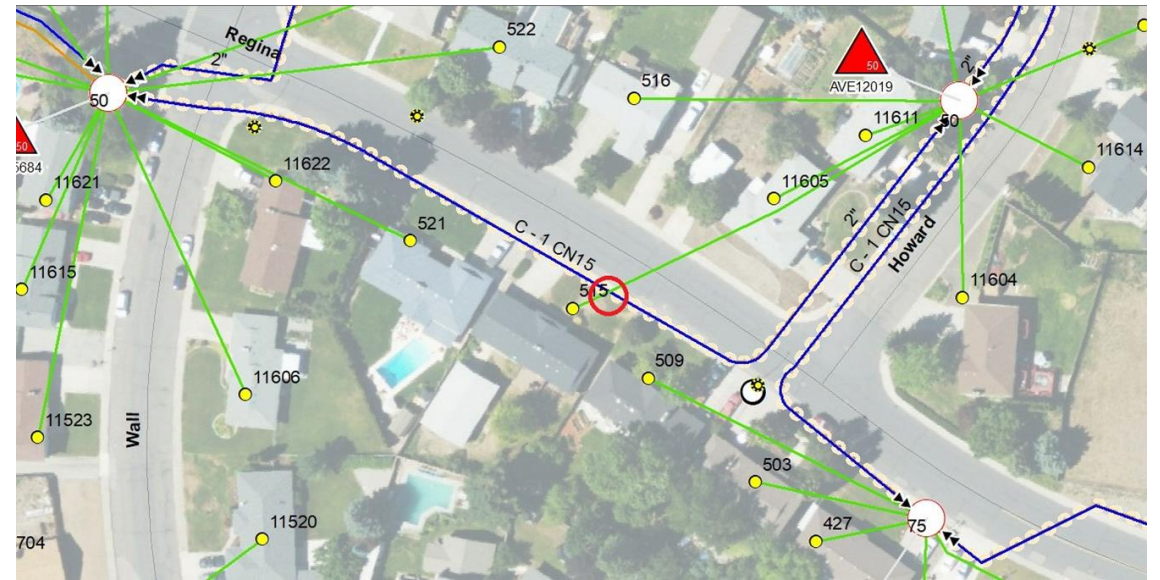
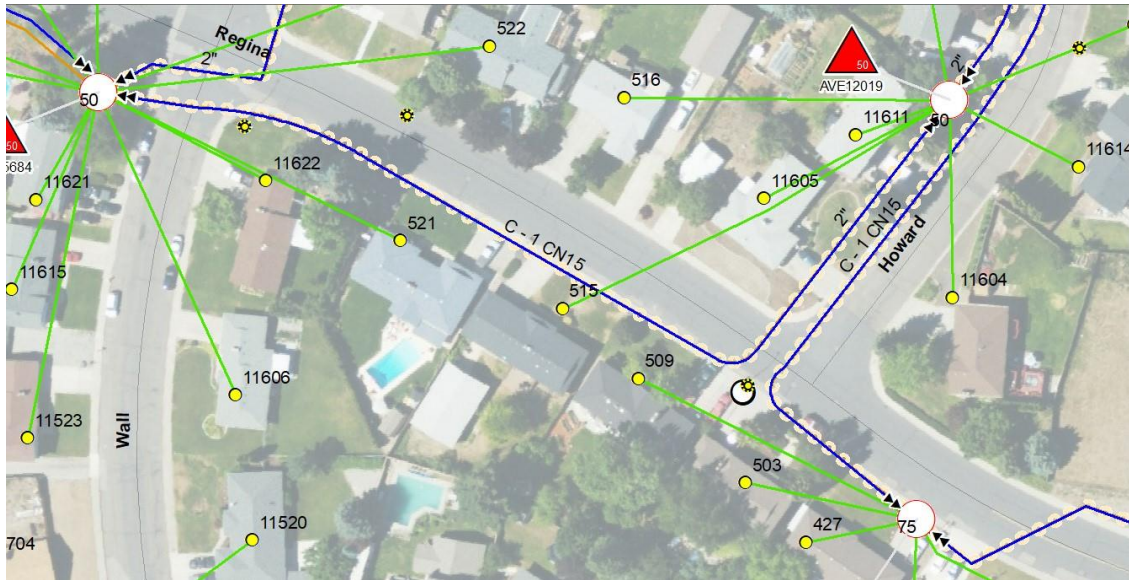
M&L Construction vs Avista

Case 240962

515 W Regina Ave. Spokane WA

Avista Utilities Supporting Documentation

2. Avista Mapping & Location



3. Electric Secondaries Sketches

How they were mapped



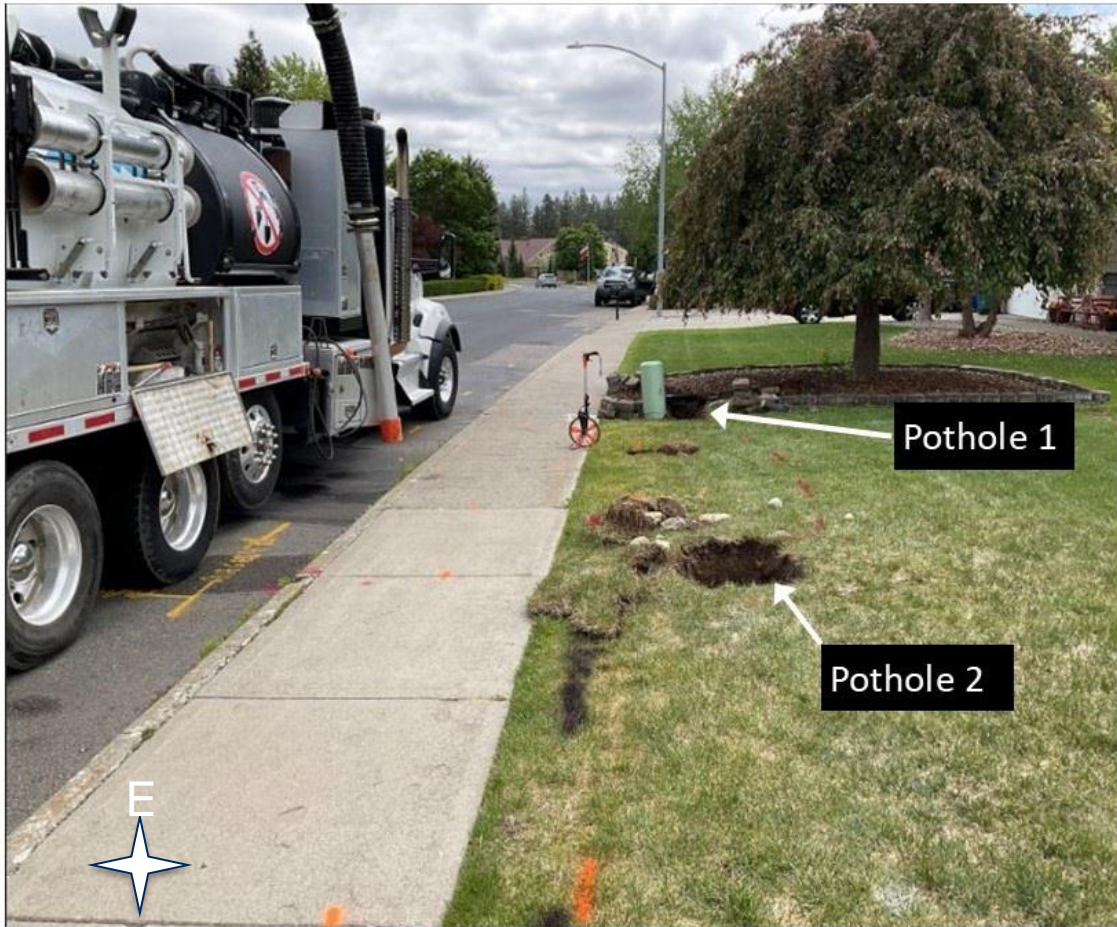
How they located



4. Sketch of Secondaries Actual Location

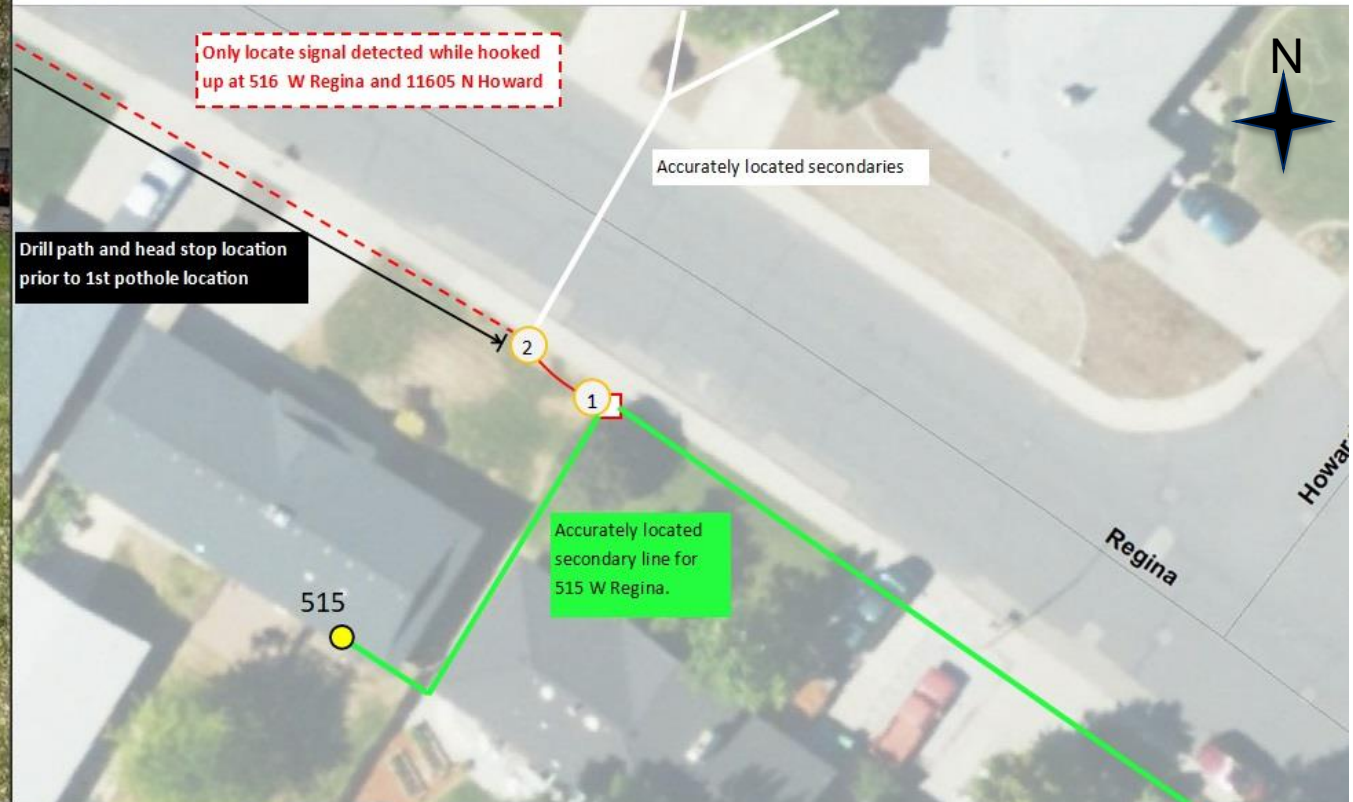


5. Pothole Locations and Sketch



Pothole Locations

1. First pothole near communications ped and Avista hand hole. Found unmarked electric line heading west out of the hand hole.
2. Second pothole after notifying Avista of unmarked electric line and new locates were provided showing correct location.



6. Original Locate Photo w/ No Comm Line Located



7. Additional Comms Locate Marks After Electric Marks



8. Map Correction

