

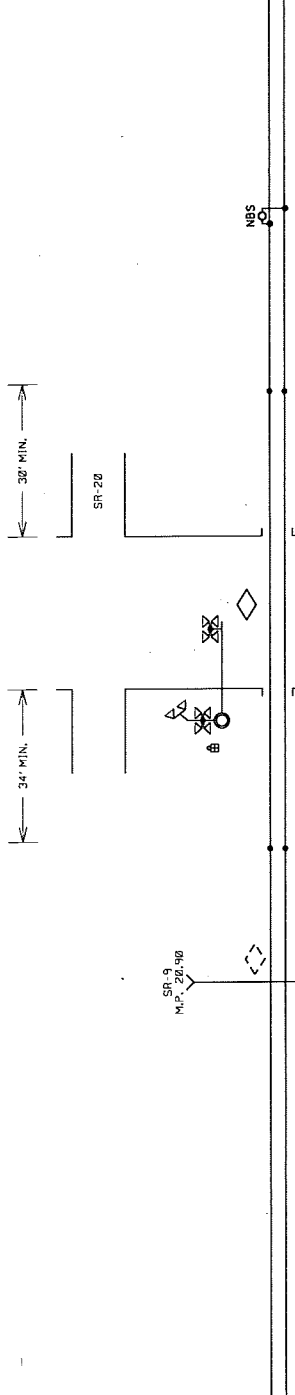
The Burlington Northern & Santa Fe Railway Company

TO BURLINGTON

EASTWARD APPR. 548' 10 MPH

134' MIN.

WESTWARD APPR. 554' 10 MPH

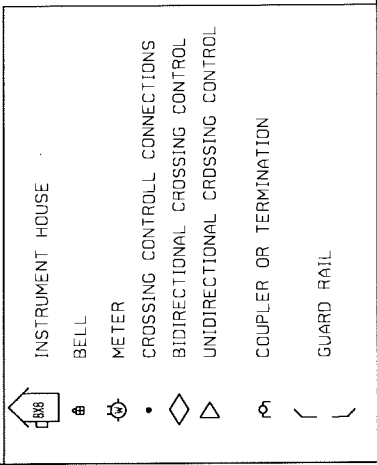


M.P. 20.98
 FERRY STREET
 DOT # 085 008 P

PROJECT # 74716

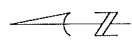
REPLACE: LEDS
 CONTROL DEVICES: CONSTANT WARNING
 SALVAGE: NONE

RED = IN YELLOW = OUT



Warning device placement:
 Clearance to C.L. Track = Min. 12'
 Edge of Road to C.L. Foundation:
 Min. 4'3" with curb,
 Min. 8'3" without curb,
 Max. 12'

House Clearance:
 25' Min. to Near Rail
 30' Min. to Edge of Road



BNSF RAILWAY CO.
 LOCATION: SEDRO WOOLLEY, WA
 STREET: FERRY STREET
 LS: 0409
 M.P. 20.98
 DOT # 085 008 P
 DIVISION: NORTHWEST
 SUBDIVISION: SUMAS
 KANSAS CITY
 NO SCALE
 DATE: 10/18/2018
 FILE: 74716-STATE SKETCH-.dgn
 AMW

BNSF RAILWAY COMPANY
 FHPM ESTIMATE FOR
 FED

LOCATION SEDRO WOOLLEY DETAILS OF ESTIMATE PLAN ITEM : 000309791 VERSION : 1

PURPOSE, JUSTIFICATION AND DESCRIPTION

FERRY ST - SEDRO WOOLLEY, WA; REMOVE AC LIGHTING; NORTHWEST DIV; SUMAS SUBDIV; LS 409; MP 20.98; DOT# 085008P; SEQ# 74716.

MONTHLY POWER UTILITY COST CENTER : 61504.

THE MATERIAL LIST BELOW REFLECTS TYPICAL REPRESENTATIVE PACKAGES USED FOR ESTIMATING PURPOSES ONLY.

THIS ESTIMATE IS GOOD FOR 180 DAYS. THE ESTIMATE IS SUBJECT TO CHANGE IN COST FOR LABOR, MATERIAL, AND OVERHEAD.

CONTRACTS HAVE BEEN ESTABLISHED FOR PORTIONS OF SIGNAL WORK ON THE BNSF RAILROAD.

***** SIGNAL WORK ONLY *****

FED IS FUNDING 100% OF THIS PROJECT.

MAINTAIN PROPRIETARY CONFIDENTIALITY.

PRIMARY FUNDING SOURCE IS FHWA

** BUY AMERICA(N) APPLIES **

DESCRIPTION	QUANTITY	U/M	COST	TOTAL \$

LABOR				

SIGNAL FIELD - REPLACE	112.0	MH	3,453	
PAYROLL ASSOCIATED COSTS			2,203	
DA OVERHEADS			3,568	
EQUIPMENT EXPENSES			707	
INSURANCE EXPENSES			580	
TOTAL LABOR COST			10,511	10,511

MATERIAL				

BELLS	1.0	EA N	206	
CABLE, 5C/6	500.0	FT N	2,000	
CHARGERS, 12/80 (20/40/60)	2.0	EA N	2,043	
EVENT RECORDER	1.0	EA N	3,250	
LAMP RESISTOR PANEL	1.0	EA N	818	
LED LIGHT	22.0	EA N	4,016	
LED RETROFIT LIGHT UNIT	22.0	EA N	3,663	
LIGHT OUT DETECTOR	1.0	EA N	913	
MISC MATERIAL	1.0	LS N	750	
RELAY, POWER OFF	1.0	EA N	100	
USE TAX			1,675	
OFFLINE TRANSPORTATION			219	
TOTAL MATERIAL COST			19,653	19,653

OTHER				

CONTRACT ENGINEERING	1.0	LS N	3,000	
DIRECTIONAL BORING	200.0	FT N	10,000	
TOTAL OTHER ITEMS COST			13,000	13,000
PROJECT SUBTOTAL				43,164
CONTINGENCIES				0
BILL PREPARATION FEE				432
GROSS PROJECT COST				43,596
LESS COST PAID BY BNSF				0
TOTAL BILLABLE COST				43,596