

CONFIDENTIAL PER WAC 480-07-160

2017 Affiliated Interest Report for Torre Refuse & Recycling, LLC (G-260) d/b/a Sunshine Disposal & Recycling in accordance with WAC 480-70-079 (Redacted Version)

Torre Refuse & Recycling, LLC (TRR) shares common ownership and control with the following companies:

Ada-Lin Waste Systems, Inc. (AWS)
WSF, LLC (WSF)
South Clayton Land Company, LLC (SCLC)
Sunshine Recyclers, Inc. (SRI)
Sunshine Disposal, Inc. (SDI) (wholly owned by Sunshine Recyclers, Inc.)

TRR provides the following services to AWS, SRI and SDI:

Equipment Repair, Management, Procurement, Facility, Accounting, and Customer Service.

The total amount paid by each entity for these combined services in 2017 was:

AWS: \$126,337
SDI: \$229,012
SRI: \$ [REDACTED]

These totals are determined through an allocation of actual usage of these services by the various entities.

These 3 companies also have loans due to or due from TRR as needed. Interest is paid at the bank's prime rate (currently 5.00%). The terms are perpetual. The balances at 12/31/2017 were as follows:

AWS payable to TRR: \$ 16,710
TRR payable to SRI: \$ [REDACTED]
TRR payable to SDI: \$ 151,912

WSF provides the following services to TRR:

Container maintenance and manufacturing and truck component purchasing. (\$ [REDACTED] in 2017)

SCLC provides the following services to TRR: Facility Rental (\$24,000 in 2017)

The following are the owners and officers of the related companies with affiliated transactions in excess of \$100,000:

Torre Refuse and Recycling, LLC

Marc Torre, Managing Member (80% owner)
Michael Torre, Member (20% owner)

WSF, LLC

Marc Torre, Managing Member (95% owner)
Michael Torre, Member (5% owner)

Ada-Lin Waste Systems, Inc.

Marc Torre, President (100% owner)
 Michael Torre, Secretary/Treasurer

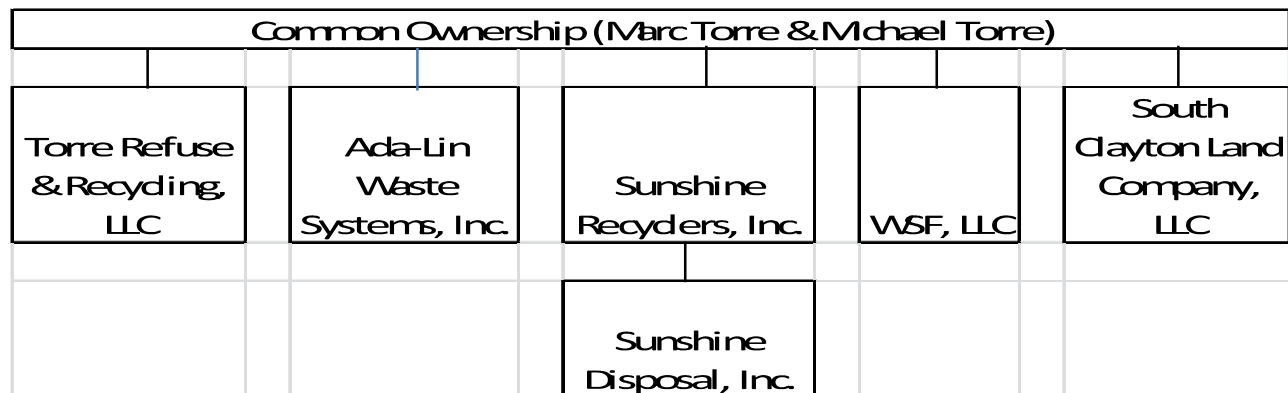
Sunshine Recyclers, Inc.

Marc Torre, President (100% owner)
 Michael Torre, Vice President/Secretary/Treasurer

Sunshine Disposal, Inc. (100% owned by SRI)

Marc Torre, President
 Michael Torre, Vice President/Secretary/Treasurer

The organization chart is as follows:



The following are financial statements for related in compliance with WAC 480-70-079(3)(A)

	Ada-Lin Waste Systems, Inc.	Sunshine Disposal, Inc.	Sunshine Recyclers, Inc.	WSF, LLC
Balance Sheet				
Current Assets	367,430	670,956		
Fixed Assets	267,565	828,662		
Other Assets	99,000	5,542		
Total Assets	<u>733,995</u>	<u>1,505,070</u>		
Liabilities	46,891	168,071		
Due Related Entity	(16,710)	151,912		
Equity	703,814	1,185,088		
Total Liab + Equity	<u>733,814</u>	<u>1,505,070</u>		
Income Statement				
Revenue	827,968	2,709,987		
Expense	655,208	2,628,130		
Net Income	172,760	81,857		