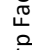
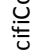


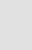

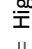


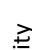
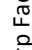
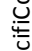
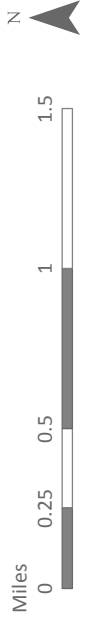
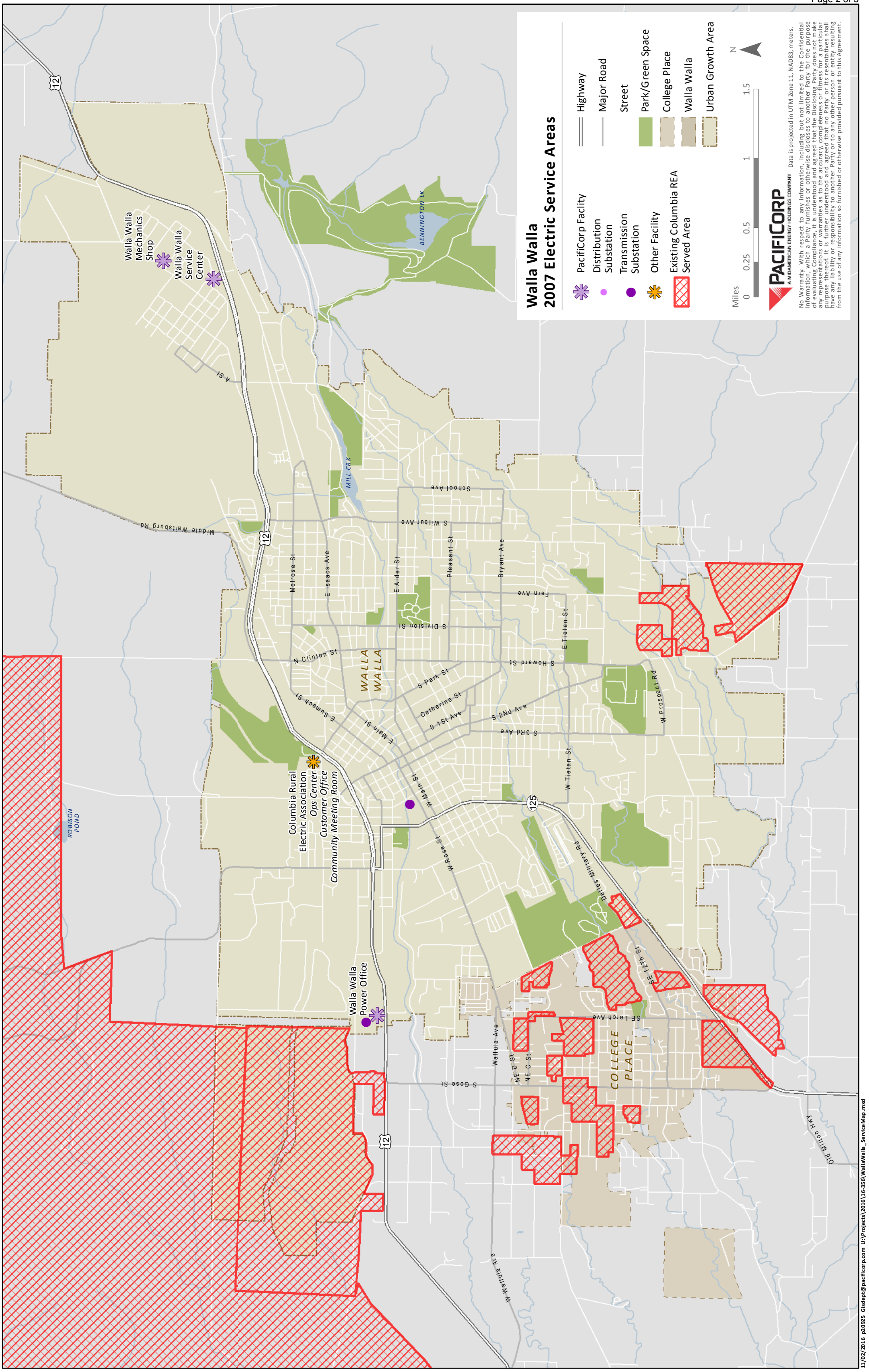


Walla Walla 1997 Electric Service Areas

-  PacifiCorp Facility
-  Distribution Substation
-  Transmission Substation
-  Other Facility
-  Existing Columbia REA Served Area
-  Highway
-  Major Road
-  Street
-  Park/Green Space
-  College Place
-  Walla Walla
-  Urban Growth Area

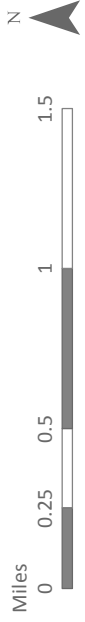


Data is projected in UTM Zone 11, NAD83, meters.
No Warranty. With respect to any information, including but not limited to the Confidential Information, which a Party furnishes or otherwise discloses to another Party for the purpose of evaluating Compliance, it is understood and agreed that the Disclosing Party does not make any representations or warranties as to the accuracy, completeness or fitness for a particular purpose of such information. The Disclosing Party shall not be liable for any errors or omissions, and shall have no liability or responsibility to another Party or to any other person or entity, resulting from the use of any information so furnished or otherwise provided pursuant to this Agreement.

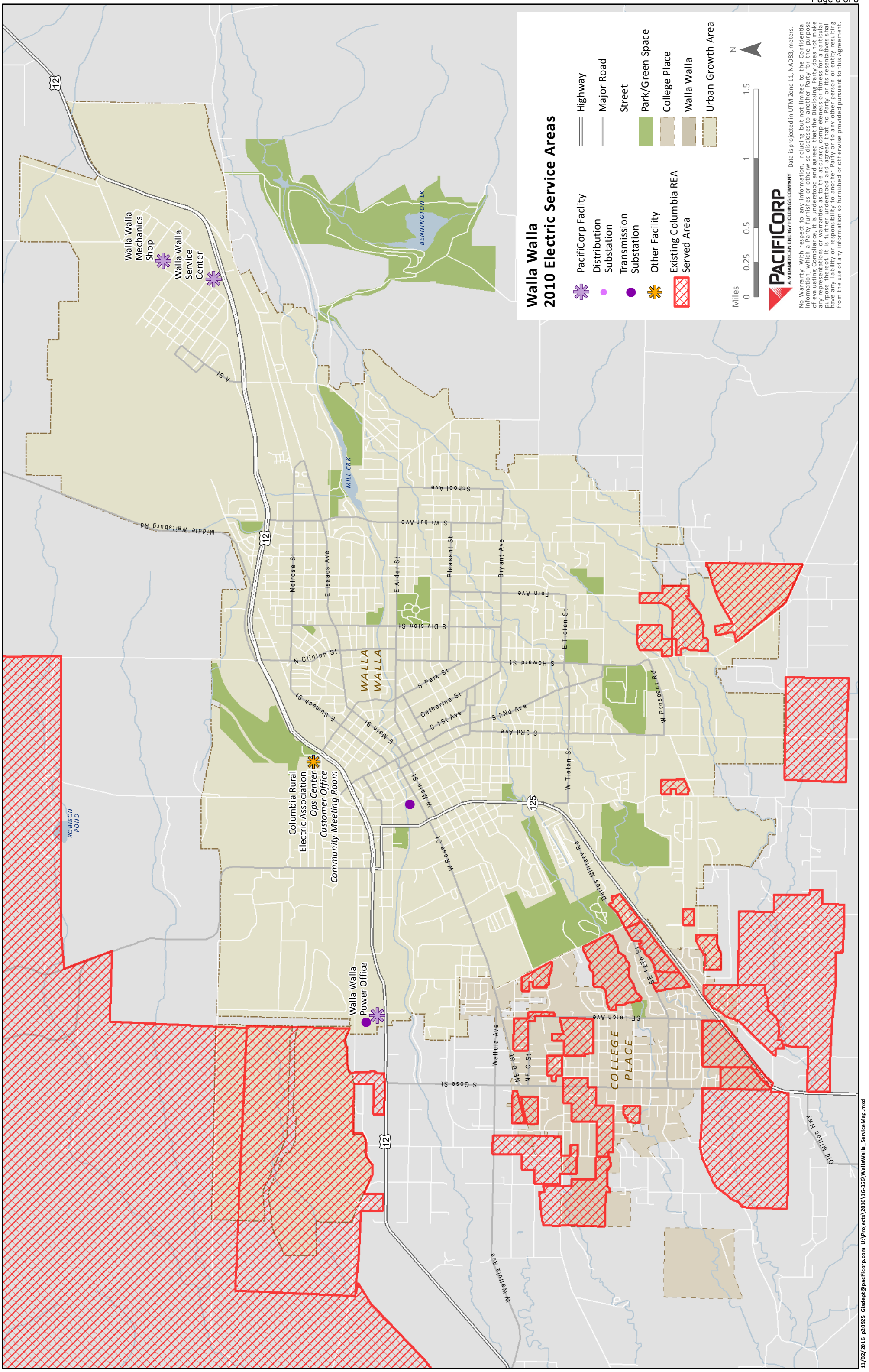


Walla Walla 2007 Electric Service Areas

- PacifiCorp Facility
- Distribution Substation
- Transmission Substation
- Other Facility
- Existing Columbia REA Served Area
- Highway
- Major Road
- Street
- Park/Green Space
- College Place
- Walla Walla
- Urban Growth Area

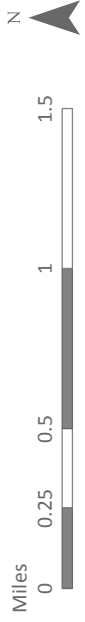


Data is projected in UTM Zone 11, NAD83, meters.
No Warranty. With respect to any information, including but not limited to the Confidential Information, which a Party furnishes or otherwise discloses to another Party for the purpose of evaluating Compliance, it is understood and agreed that the Disclosing Party does not make any representations or warranties as to the accuracy, completeness or fitness for a particular purpose of such information. The Disclosing Party shall not be liable for any errors or omissions, and shall have no liability or responsibility to another Party or to any other person or entity, resulting from the use of any information so furnished or otherwise provided pursuant to this Agreement.

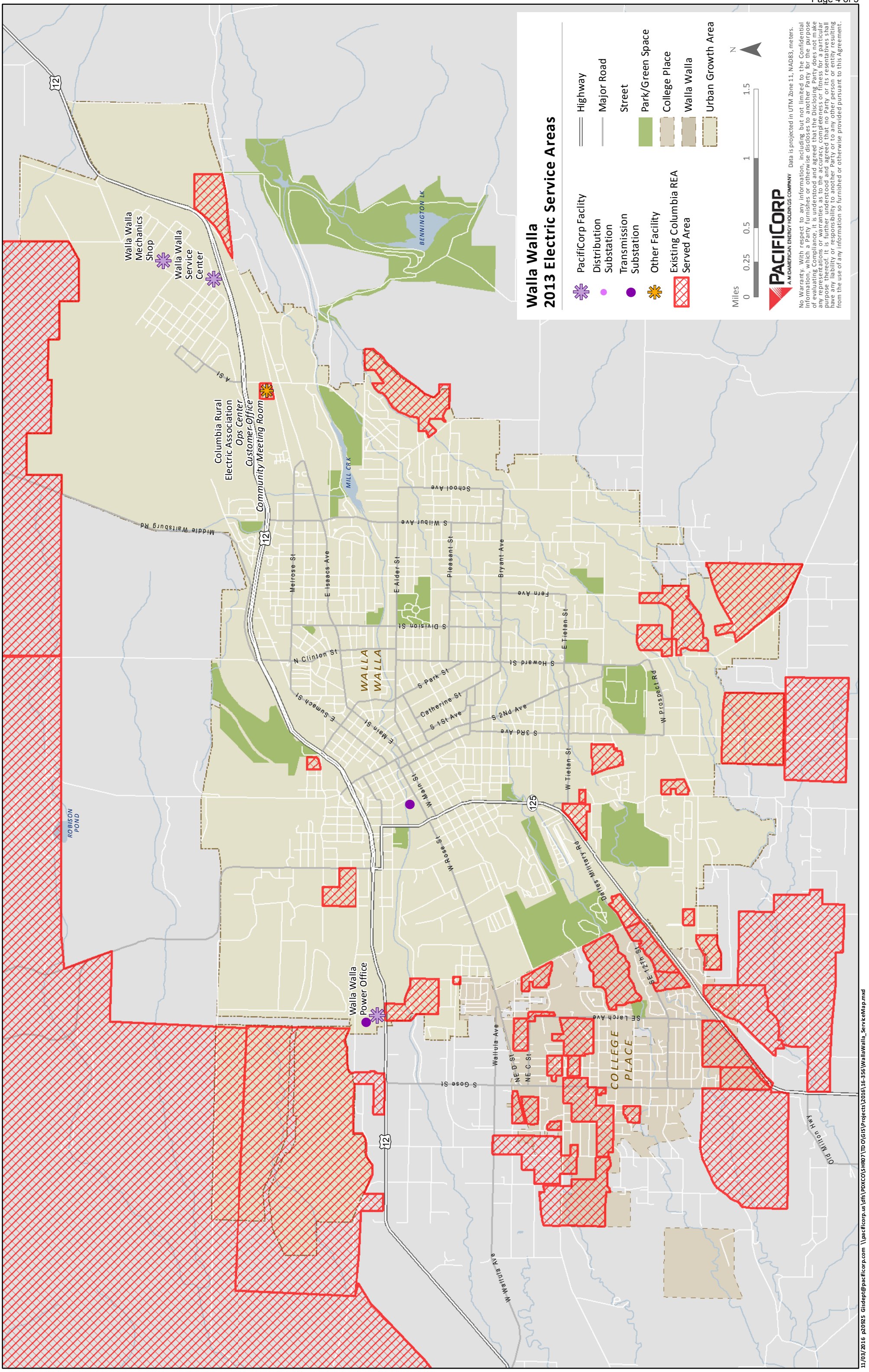


Walla Walla 2010 Electric Service Areas

- PacifiCorp Facility
- Distribution Substation
- Transmission Substation
- Other Facility
- Existing Columbia REA Served Area
- Highway
- Major Road
- Street
- Park/Green Space
- College Place
- Walla Walla
- Urban Growth Area



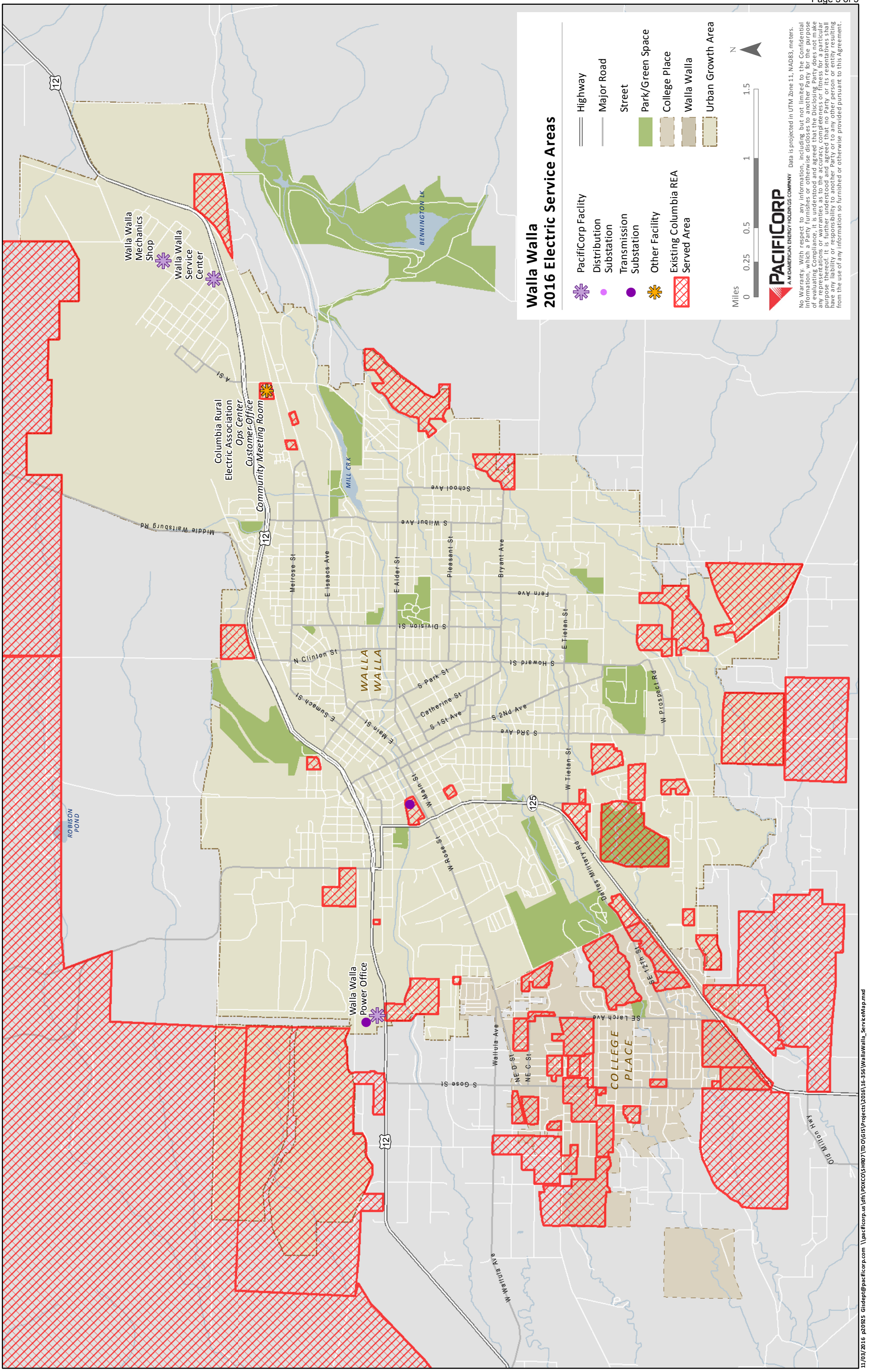
Data is projected in UTM Zone 11, NAD83, meters.
No Warranty. With respect to any information, including but not limited to the Confidential Information, which a Party furnishes or otherwise discloses to another Party for the purpose of evaluating Compliance, it is understood and agreed that the Disclosing Party does not make any representations or warranties as to the accuracy, completeness or fitness for a particular purpose of such information. The Disclosing Party shall not be liable for any errors or omissions, and shall have no liability or responsibility to another Party or to any other person or entity, resulting from the use of any information so furnished or otherwise provided pursuant to this Agreement.



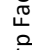
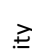


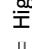



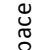


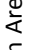
PACIFICORP
A MIDAMERICAN ENERGY HOLDINGS COMPANY

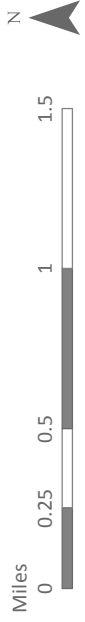
Data is projected in UTM Zone 11, NAD83, meters.

No Warranty. With respect to any information, including but not limited to the Confidential Information, which a Party furnishes or otherwise discloses to another Party for the purpose of evaluating Compliance, it is understood and agreed that the Disclosing Party does not make any representations or warranties as to the accuracy, completeness or fitness for a particular purpose of such information. The Disclosing Party shall not be liable for any errors, omissions, or any liability or responsibility to another Party or to any other person or entity resulting from the use of any information so furnished or otherwise provided pursuant to this Agreement.



Walla Walla 2016 Electric Service Areas

-  PacifiCorp Facility
-  Distribution Substation
-  Transmission Substation
-  Other Facility
-  Existing Columbia REA Served Area
-  Highway
-  Major Road
-  Street
-  Park/Green Space
-  College Place
-  Walla Walla
-  Urban Growth Area



Data is projected in UTM Zone 11, NAD83, meters.
No Warranty. With respect to any information, including but not limited to the Confidential Information, which a Party furnishes or otherwise discloses to another Party for the purpose of evaluating Compliance, it is understood and agreed that the Disclosing Party does not make any representations or warranties as to the accuracy, completeness or fitness for a particular purpose of such information. The Disclosing Party shall not be liable for any errors or omissions, and shall have no liability or responsibility to another Party or to any other person or entity, resulting from the use of any information so furnished or otherwise provided pursuant to this Agreement.