

1. **49 CFR §192.355(b)(1) Customer meters and regulators: Protection from damage**

- (a) *Protection from vacuum or back pressure. If the customer's equipment might create either a vacuum or a back pressure, a device must be installed to protect the system.*
- (b) *Service regulator vents and relief vents. Service regulator vents and relief vents must terminate outdoors and the outdoor terminal must:*
 - (1) *Be rain and insect resistant;*
 - (2) *Be located at a place where gas from the vent can escape freely into the atmosphere and away from any opening into the building; and,*
 - (3) *Be protected from damage caused by submergence in areas where flooding may occur.*
- (c) *Pits and vaults. Each pit or vault that houses a customer meter or regulator at a place where vehicular traffic is anticipated must be able to support that traffic.*

Charge:

Regulator relief vents on certain PSE meter sets did not have proper screening installed to prevent debris and insects from entering and plugging the regulator relief.

Finding(s):

Field inspections found the following meter sets with regulator relief vents that did not have proper screening to prevent debris and insects from entering and plugging the regulator relief. A plugged vent could cause an over pressure condition downstream of the meter.

- a) PSE has a meter set located at 153 SW 153rd St, Burien (Meter # 648230). The meter set regulator vent terminates inside a parking garage located under a building intended for human occupancy. The regulator is vented with ¾-inch steel and does not have a vent screen to prevent debris and insects from entering and plugging the vent.
- b) PSE has a meter set located at 13060 1st Ave S., Burien. Meter # 950320. The meter set regulator vent terminates through a section of ¾" steel pipe and does not have a vent screen to prevent debris and insects from entering and plugging the vent.
- c) PSE has a meter set located at 780 S. Michigan ST., Georgetown. This is a 3-meter manifold and 2 of the meter numbers are, #399221 and #771271. The meter set regulator vent terminates through a section of ¾" steel pipe and does not have a vent screen to prevent debris and insects from entering and plugging the vent.

Note: A post field review indicates that these 3 installations have been remediated. Please respond and explain why these were not found during PSE's vent inspection program.

§192.355 Customer meters and regulators: Protection from damage.

(a) Protection from vacuum or back pressure. If the customer's equipment might create either a vacuum or a back pressure, a device must be installed to protect the system.

(b) Service regulator vents and relief vents. Service regulator vents and relief vents must terminate outdoors, and the outdoor terminal must:

(1) Be rain and insect resistant;

(2) Be located at a place where gas from the vent can escape freely into the atmosphere and away from any opening into the building; and,

(3) Be protected from damage caused by submergence in areas where flooding may occur.

(c) Pits and vaults. Each pit or vault that houses a customer meter or regulator at a place where vehicular traffic is anticipated, must be able to support that traffic.

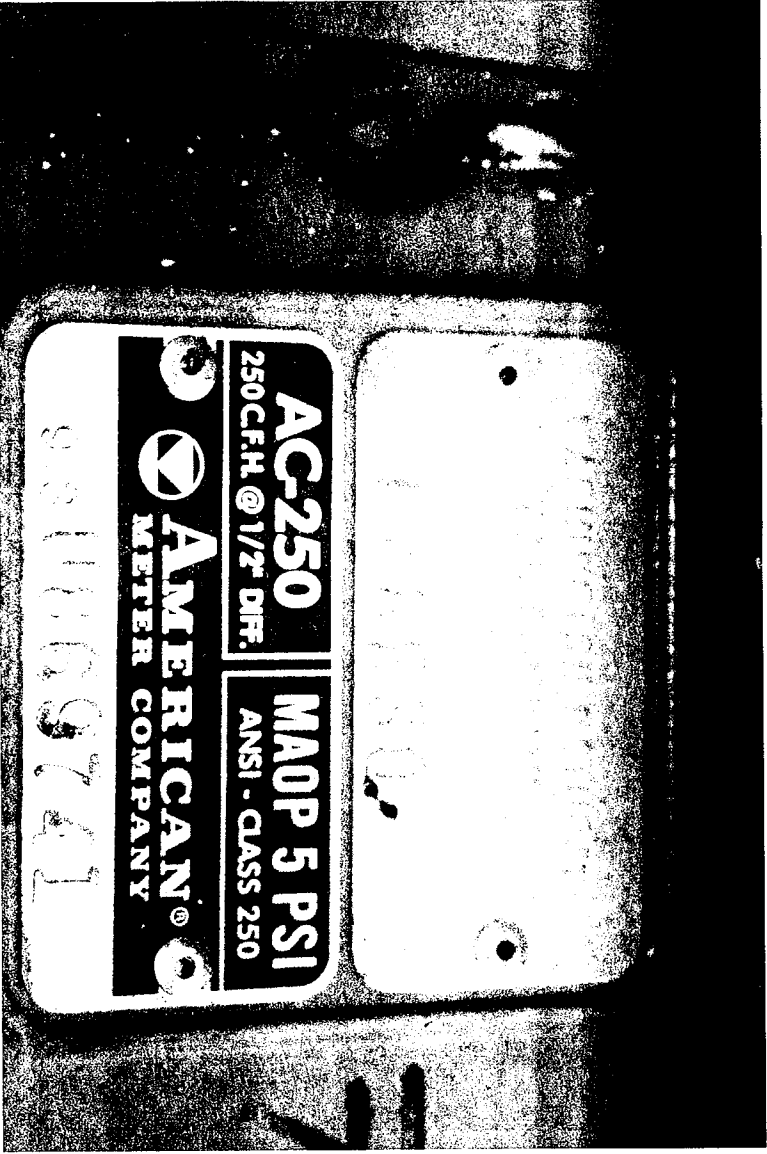
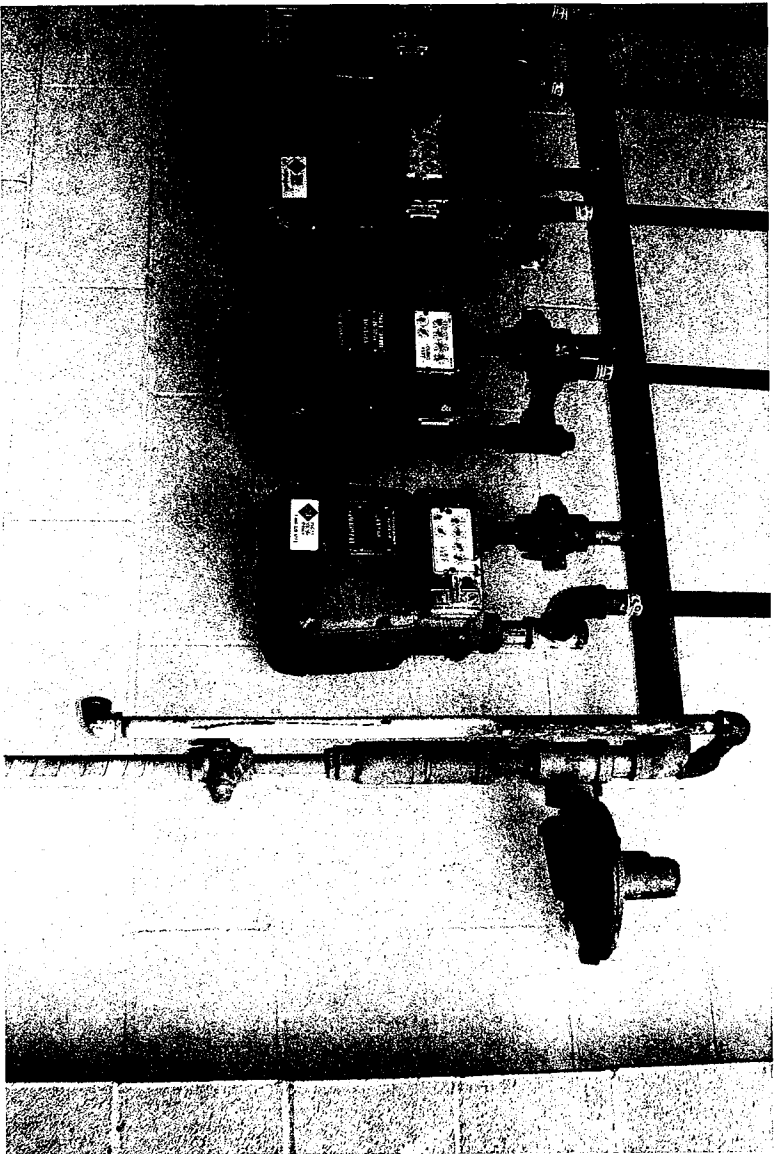
[Part - 192 - Org, Aug. 19, 1970, as amended by Amdt. 192-58, 53 FR 1633, Jan. 21, 1988]



13060 1st Ave S, Burien



780 S. Michigan Seattle



meter 648230
no address

