

BEFORE THE WASHINGTON UTILITIES AND TRANSPORTATION COMMISSION

DOCKET NO. UE-15_____

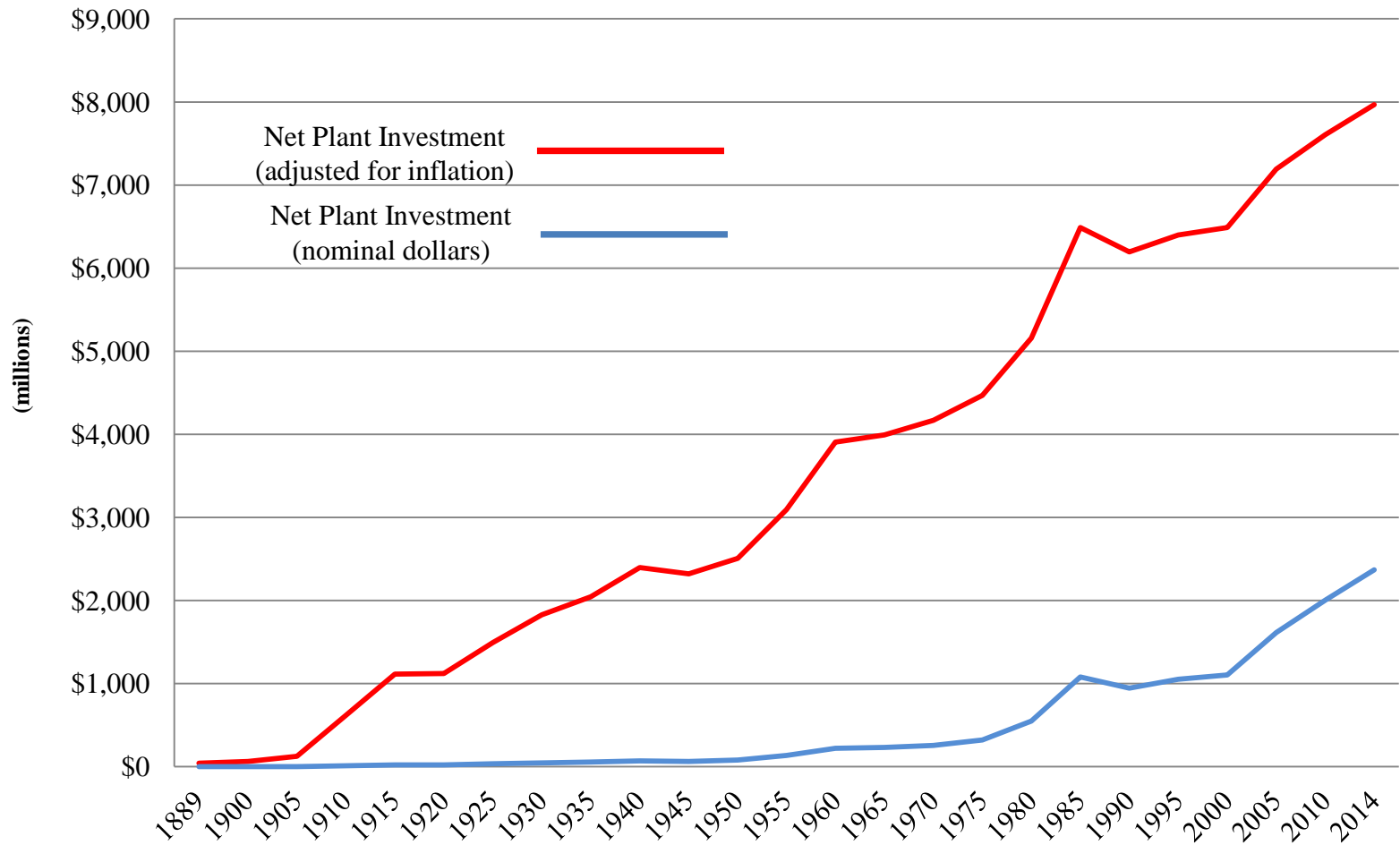
DOCKET NO. UG-15_____

EXHIBIT NO. _____ (SLM-4)

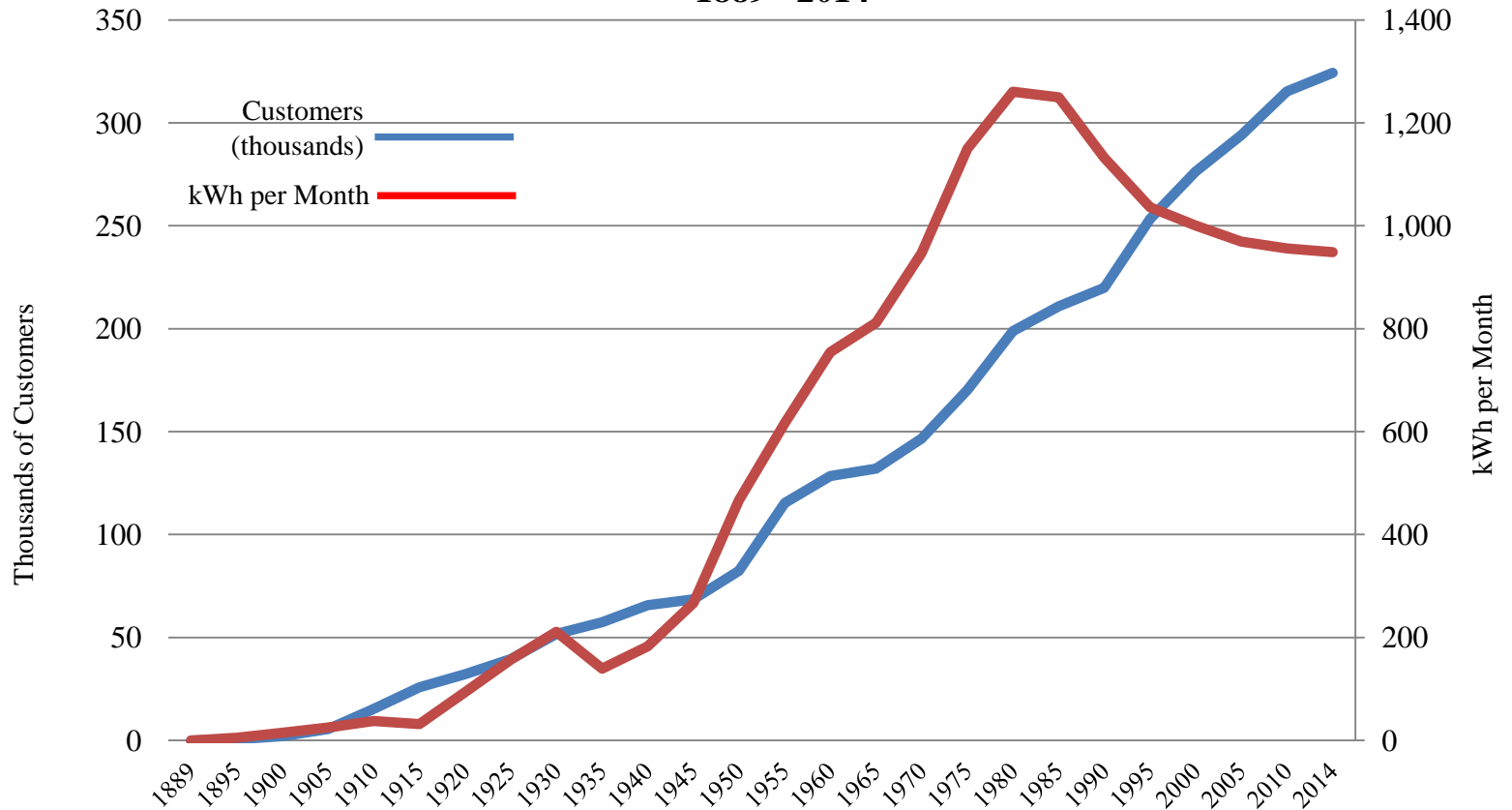
SCOTT L. MORRIS

REPRESENTING AVISTA CORPORATION

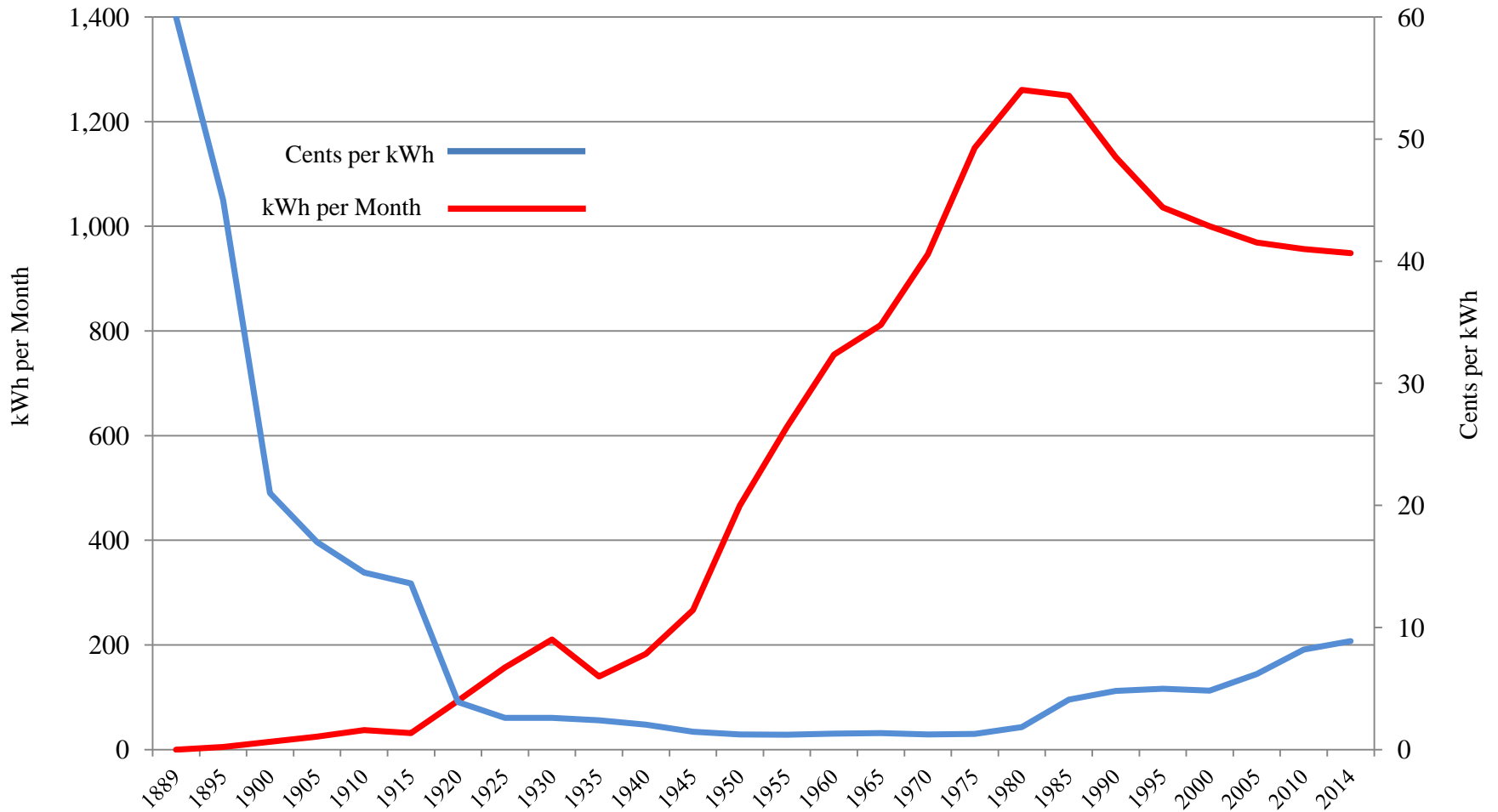
Avista Net Electric Plant Investment in Nominal & Real Dollars 1889 - 2014



Avista Number of Residential Customers & Average Monthly Use per Customer 1889 - 2014



Avista Average Monthly Residential Use per Customer & Average Electric Retail Rate 1889 - 2014



Utility Costs are Rising Faster than Sales

