

## Crawford, Denise (UTC)

---

**From:** Woodard, Marina (UTC)  
**Sent:** Tuesday, August 30, 2016 10:44 AM  
**To:** Crawford, Denise (UTC)  
**Subject:** FW: Stip#150120 MAOP Validation Testing Sites  
**Attachments:** 16F14\_Maps.pdf; 08-29-16 150120-DAL.XLSX

RECEIVED

AUG 29 2016

State of Washington  
UTC  
Pipeline Safety Program

---

**From:** Ganow, Vicki [mailto:Vicki.Ganow@cngc.com]  
**Sent:** Monday, August 29, 2016 9:53 AM  
**To:** CNGC - Compliance <compliance@cngc.com>; Pipeline (UTC) <pipeline@utc.wa.gov>  
**Cc:** Eutsey, Mike <Mike.Eutsey@cngc.com>; Ritter, Dennis (UTC) <dritter@utc.wa.gov>; Sorensen, Renie <Renie.Sorensen@cngc.com>; Woodard, Marina (UTC) <mwoodard@utc.wa.gov>  
**Subject:** RE: Stip#150120 MAOP Validation Testing Sites

Good morning –

I have received message failure delivery emails when sending this message to the WUTC emails. I have included Marina in the hopes that someone will be able to get this. I also did not included the map for the Anacortes HP line as the file size may be causing some of the delivery issues. If you need this map, please let me know and we will make arrangements to get the information to you.

---

**From:** Ganow, Vicki  
**Sent:** Monday, August 29, 2016 7:31 AM  
**To:** CNGC - Compliance; [pipeline@utc.wa.gov](mailto:pipeline@utc.wa.gov)  
**Cc:** Kessie, Steve; Ogden, Jeremy; Eutsey, Mike; Ritter, Dennis (UTC) ([dritter@utc.wa.gov](mailto:dritter@utc.wa.gov)); Sorensen, Renie  
**Subject:** Stip#150120 MAOP Validation Testing Sites

Good morning

Attached are today's testing sites and the district maps.

**Vicki Ganow** | Pipeline Safety Specialist

---

**Cascade Natural Gas Corporation**  
A Subsidiary of MDU Resources Group, Inc.  
1910 Racine Street Bellingham WA 98229

direct: 360.788.2381 cell: 360.941.9257



*In the Community to Serve*

# DAILY ACTIVITY LOG

DATE	CREW	ACTIVITY	ADDRESS	CITY
08/29/16	Dasco/Parametrix	Maintenance	Test sites # 16" Fredonia Fittings & Elbows: 4, 7, 10 & 15 (location 5); 1 & 6 (location 6)	Skagit County
			Excavate sites # 8" Anacortes HP Line #1: 288, 239, 218, 216, 40, 223, 104, 75, 293, 309, 243, 282, 143, 94, and 126	Skagit County
			Test sites # 8" Anacortes HP Line #1: 172, 283, 101, 9, 39	Skagit County
			See attached district maps	
Contact:		Jeremy Ogden Director, Engineering Services (509) 734 4509		
Comments:				

**RECEIVED**  
 AUG 29 2016  
 State of Washington  
 UTC  
 Pipeline Safety Program

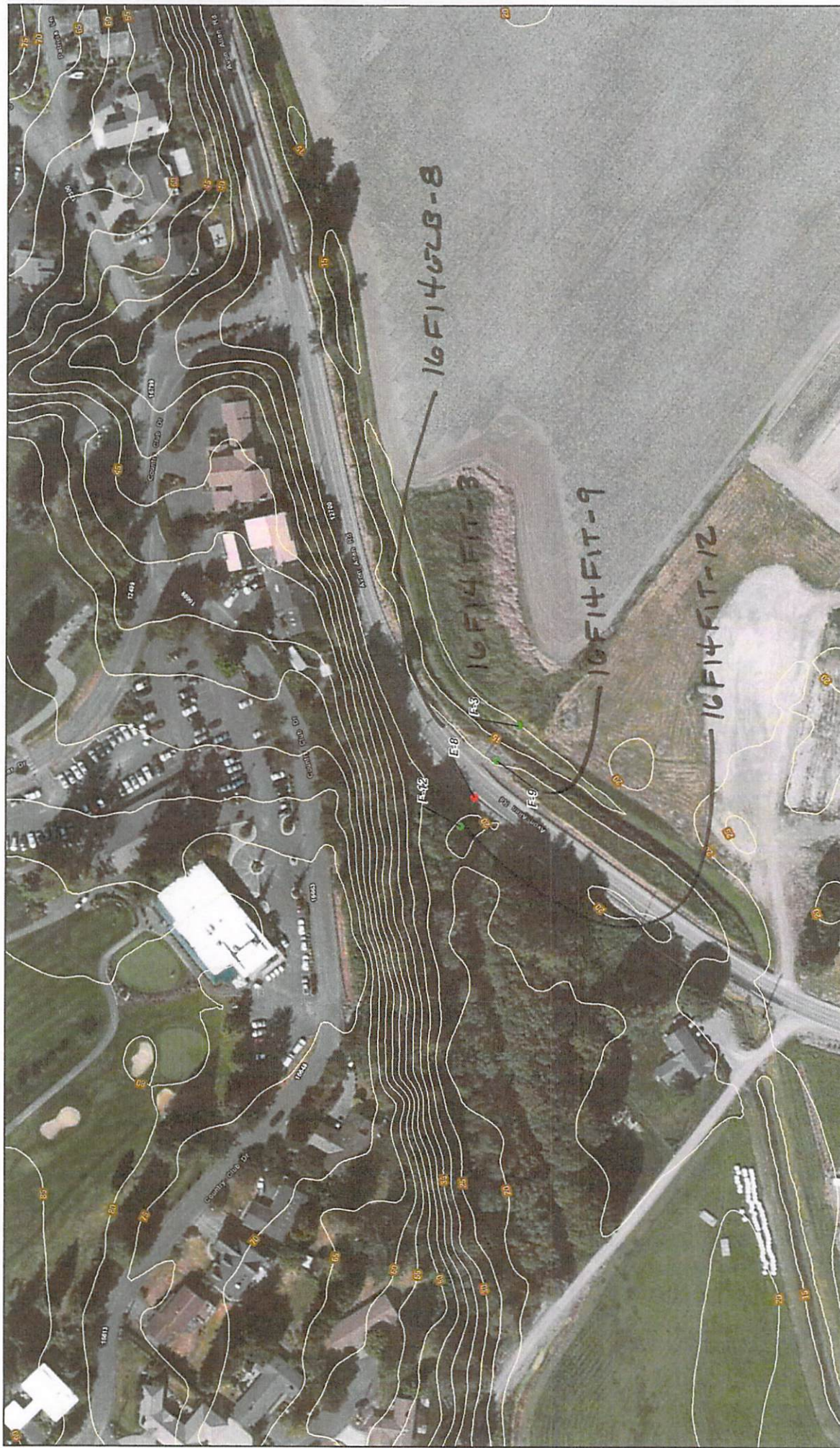


PAGE 1 of 10  
 16" FREDONIA LINE #14 ELBOWS & FITTINGS  
 SAMPLE POINT REFERENCE  
 SKAGIT CO., WA

**Loc 1**  
 Primary Elbow Sample  
 Primary Fitting Sample (formerly Secondary)  
 Primary Fitting Sample  
 Primary Fitting Sample (formerly Secondary)



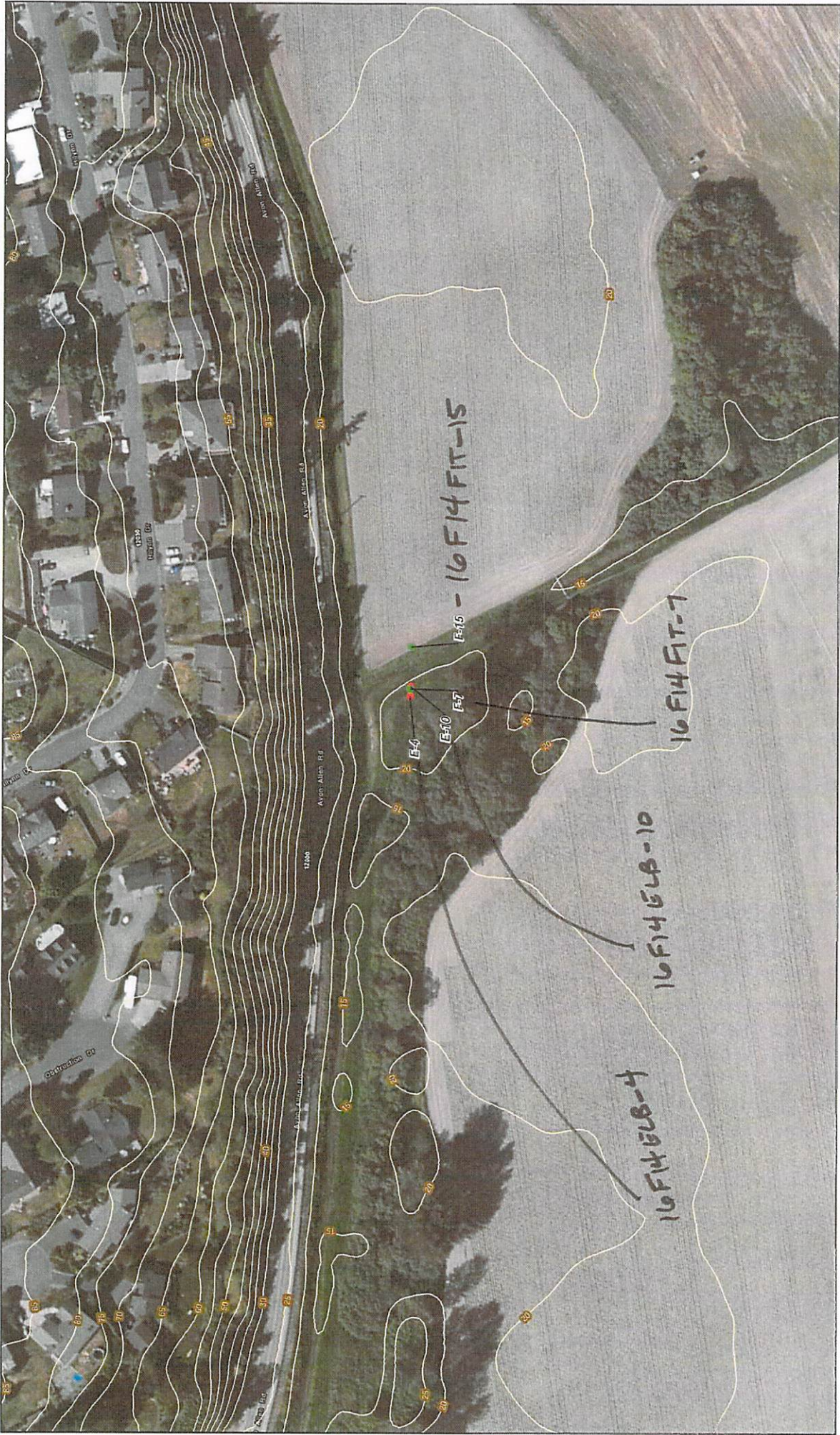
0 50 100 150 200 Feet  
 DATA obtained from Cascade Natural Gas Corp.  
 1 inch = 100 feet  
 Source: Maps based on description, Aerial, Digital, and other sources. Accuracy not guaranteed. Contour lines are approximate and may not represent true elevation. All measurements are based on the most recent available data.



**LOC 4**  
 Primary Elbow Sample  
 Primary Elbow Sample (formerly Secondary)  
 Primary Fitting Sample  
 Primary Fitting Sample (formerly Secondary)



0 50 100 200 Feet  
 1 inch = 100 Feet  
 Data obtained from Cascado Natural Gas Corp.  
 Source: Bing (2008), Esri, DigitalGlobe, GeoEye, Earthstar Geographics, CNES/Airbus DS, USDA, AeroGRID, IGN, iDP, Intermap, and the GIS User Community



- Loes**
- Primary Elbow Sample
  - Primary Elbow Sample (formerly Secondary)
  - Primary Fitting Sample
  - Primary Fitting Sample (formerly Secondary)



Data obtained from Cascade Natural Gas Corp.

1 inch = 100 feet

0 50 100 200 Feet

Source: Point Source Line Conversion, ERI, 8/11/1991; Geologic, Earthquake, and Seismicity, 1987; Airphoto 25-1154, 1955; and the GIS, 1987.



### LOC 6

- Primary Elbow Sample
- Primary Elbow Sample (formerly Secondary)
- Primary Fitting Sample
- Primary Fitting Sample (formerly Secondary)



Data obtained from Cascade Natural Gas Corp.

Source: Point Cloud LiDAR Conversion (E-1, E-6, E-74), 3D/14/FITTING ANALYSIS, CENTER CONCEPTS, 08/27/2024. 05' USN, 8505, METRIC, METRIC, 10', 10', METERS, and THE U.S.



0 50 100 200 Feet  
1 inch = 100 Feet

Data obtained from Cascade Natural Gas Corp.

Source: Puget Sound LIDAR Consortium, Esri, DigitalGlobe, GeoEye, Earthstar Geographics, CNES/Airbus DS, USDA, USGS, Aero, Setmapping, AeroGRID, IGN, IGP, swisstopo, and the GIS User Community



- Primary Elbow Sample
- Primary Elbow Sample (formerly Secondary)
- Primary Fitting Sample
- Primary Fitting Sample (formerly Secondary)

**Loc 7**



**LOC 8**

- Primary Elbow Sample
- Primary Elbow Sample (formerly Secondary)
- Primary Fitting Sample
- Primary Fitting Sample (formerly Secondary)



0 50 100 200 Feet  
 1 inch = 100 Feet  
 Data obtained from Cascade Natural Gas Corp.  
 Source: Point Survey (1988 Contouring, Elevation, Shaded-Relief, Digital Elevation Model, Digital Topographic, DEM, Aerial, and the GIS Data Community)





# Loc 9

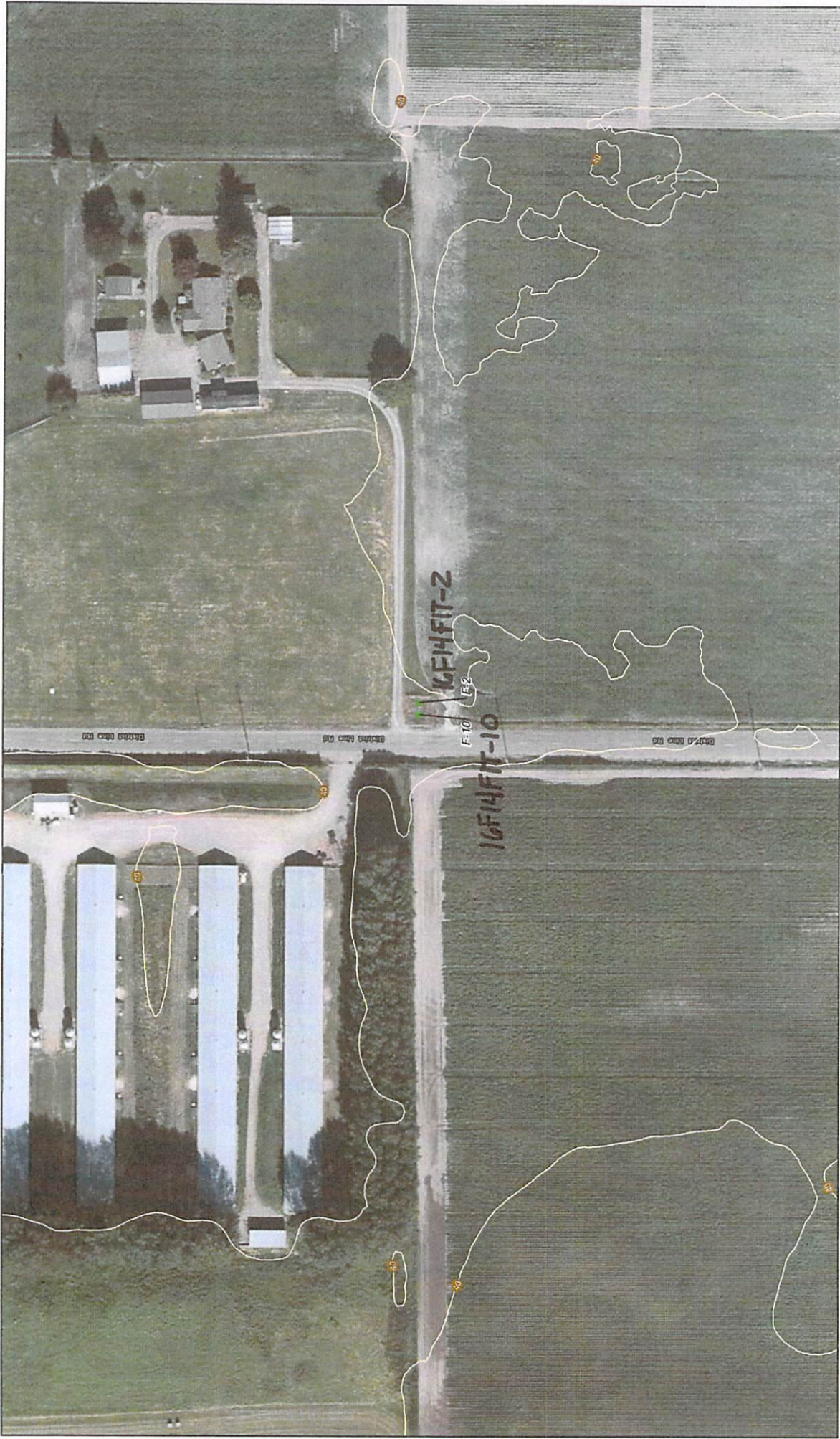
- Primary Elbow Sample
- Primary Elbow Sample (formerly Secondary)
- Primary Fitting Sample
- Primary Fitting Sample (formerly Secondary)

● Primary Elbow Sample  
● Primary Elbow Sample (formerly Secondary)  
● Primary Fitting Sample  
● Primary Fitting Sample (formerly Secondary)



Data obtained from  
 Natural Gas Corp.

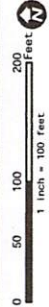
0 50 100 200 Feet  
 1 inch = 100 feet  
 Source: Data provided by Natural Gas Corp. and other sources.  
 © 2010 Skagit County, WA. All rights reserved.  
 This map is for informational purposes only and does not constitute a warranty or representation of any kind.



- Primary Elbow Sample
- Primary Elbow Sample (formerly Secondary)
- Primary Fitting Sample
- Primary Fitting Sample (formerly Secondary)



Data obtained from Cascade Natural Gas Corp.  
 Source: Point Cloud 1988; Survey Data: City of Skagit County; Aerial Imagery: GeoEye, Earthstar Geographics, CNES/Airbus DS, USDA, USGS, AeroGRID, IGN, IGP, Airphoto, and the GIS User Community





**Loc 11**

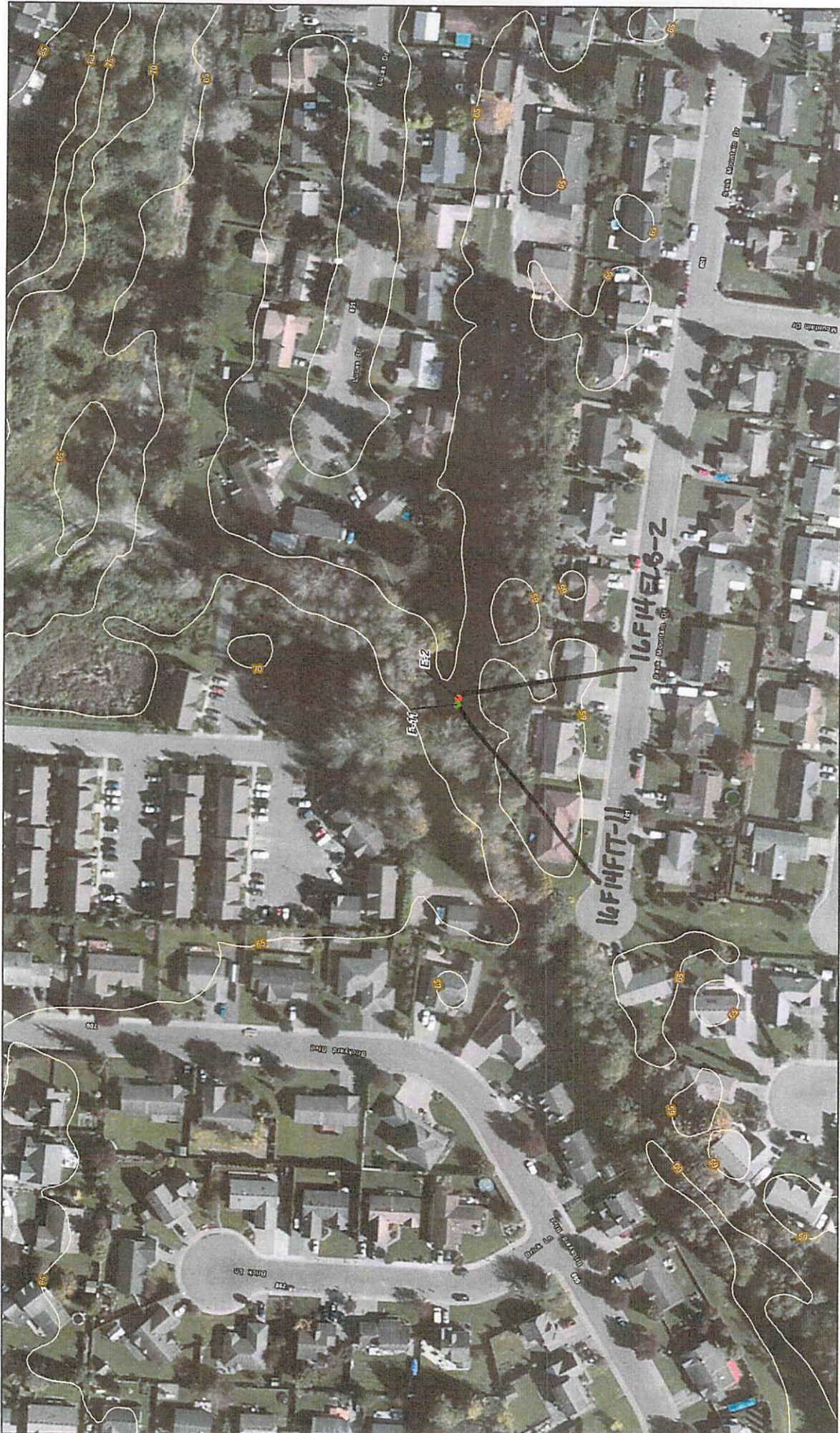
- Primary Elbow Sample
- Primary Elbow Sample (formerly Secondary)
- Primary Fitting Sample
- Primary Fitting Sample (formerly Secondary)



Data obtained from Cascade Natural Gas Corp.

Scale: 1 inch = 100 Feet

Source: Aerial Imagery, LIDAR, Google Earth, Esri, DigitalGlobe, GeoEye, Earthstar Geographics, CNR/Airbus DS, USDA, USGS, AeroGRID, IGN, 163, Intermap, and the GIS User Community



**LOC 12**

- Primary Elbow Sample
- Primary Fitting Sample (formerly Secondary)
- Primary Fitting Sample
- Primary Fitting Sample (formerly Secondary)



Points obtained from Cascade Natural Gas Corp.  
 Source: Point Cloud (2018), Aerial Imagery, Digital Elevation Model, Digital Orthophoto, CAD/Aerial Photo, USGS, Bing Community, Google Earth, Topographic, and the US