

**Exhibit No. \_\_\_\_ (LLS-5)**

Everett/Snohomish Directory Covers  
for Certain Years 1953 to 1999

# EVERETT

WASHINGTON

and VICINITY

# TELEPHONE DIRECTORY

STATE LIBRARY  
APR 27 1953  
CLERMONT, MISSOURI

April, 1953

1928

*West Coast*



TELEPHONE COMPANY

1953

*25 Years of Service and Progress*

SEE INTRODUCTORY SECTION FOR EMERGENCY CALLS AND OTHER IMPORTANT MATTERS

COPYRIGHT 1953 BY WEST COAST TELEPHONE COMPANY

ARLINGTON • DARRINGTON • DUVALL  
EVERETT • GRANITE FALLS • MARYSVILLE  
MONROE • SKYKOMISH • SNOHOMISH  
STANWOOD • SULTAN

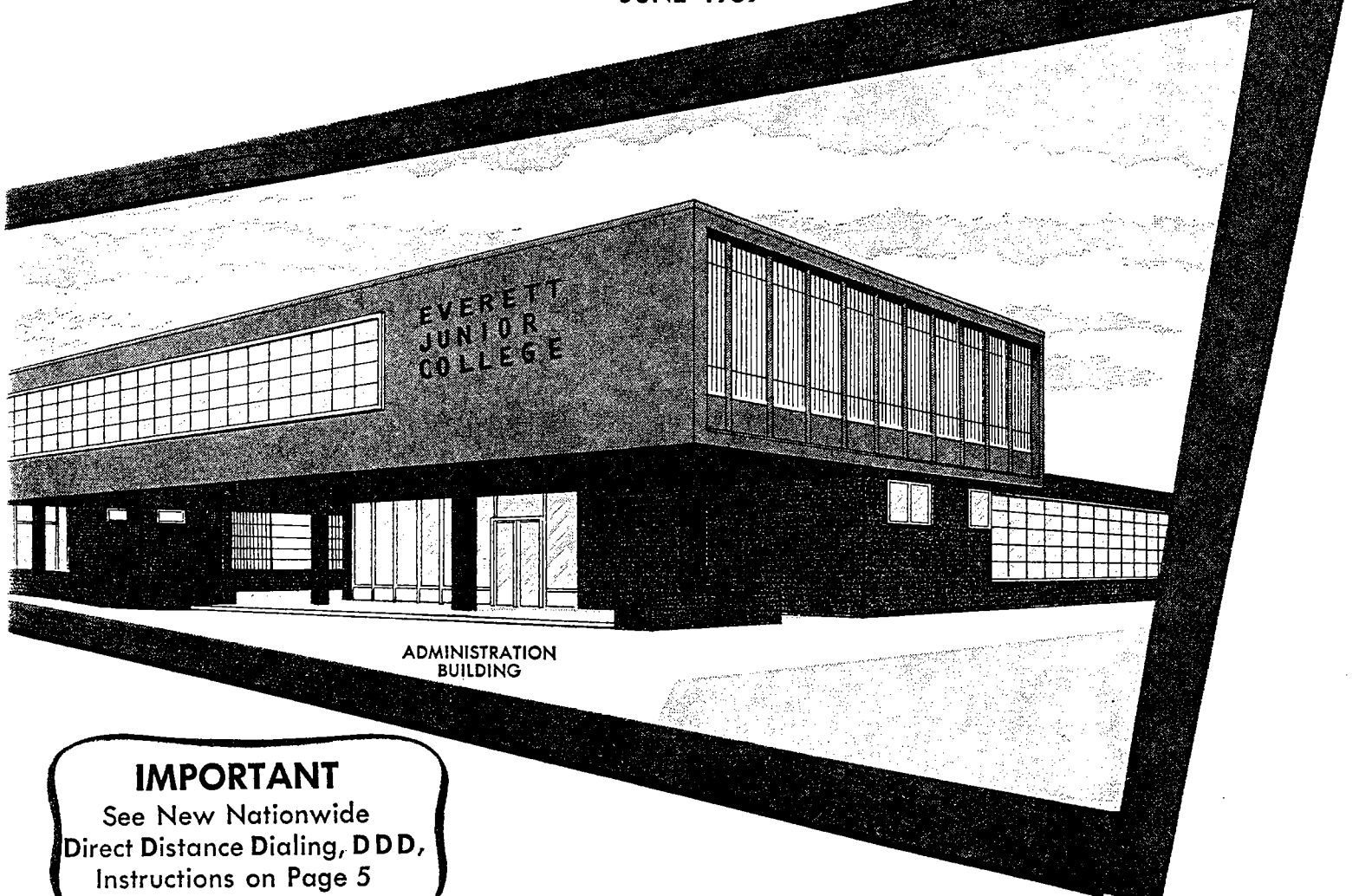
RECEIVED

JUN 9 1959

WASHINGTON STATE LIBRARY

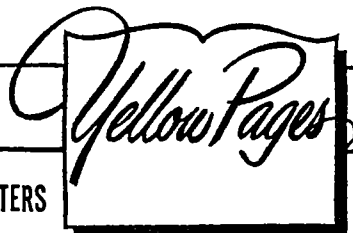
TELEPHONE DIRECTORY

JUNE 1959



**IMPORTANT**  
See New Nationwide  
Direct Distance Dialing, DDD,  
Instructions on Page 5

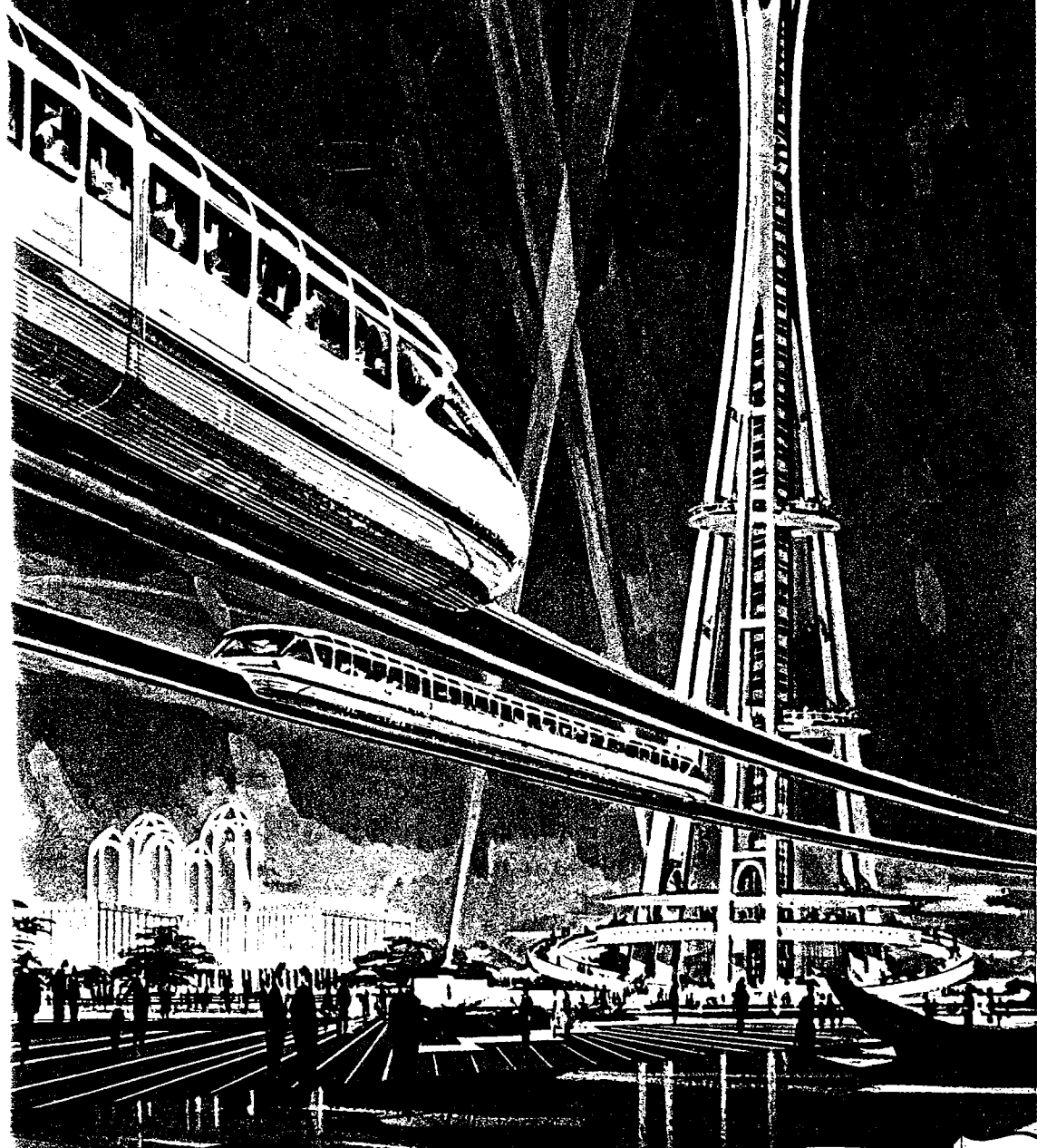
LET THE YELLOW PAGES TELL YOU "WHERE TO BUY IT"



SEE INTRODUCTORY SECTION FOR EMERGENCY CALLS AND OTHER IMPORTANT MATTERS



# TELEPHONE DIRECTORY



AUGUST 1961

**ARLINGTON**

**DARRINGTON**

**DUVALL**

**EVERETT**

**GRANITE FALLS**

**MARYSVILLE**

**MONROE**

**SKYKOMISH**

**SNOHOMISH**

**STANWOOD**

**SULTAN**

*World's Fair  
Seattle - 1962*



SEE INTRODUCTORY SECTION FOR TELEPHONE  
CALLS AND OTHER IMPORTANT INFORMATION

Copyright 1961 by West Coast Telephone Company



ARLINGTON  
DARRINGTON  
DUVALL

EVERETT  
LAKE STEVENS  
MUKILTEO  
PINEHURST  
LOWELL

GRANITE FALLS  
MARYSVILLE  
MONROE

SKYKOMISH  
SNOHOMISH  
STANWOOD  
CAMANO ISLAND  
SILVANA

SULTAN

Area Code 206



**WEST COAST TELEPHONE COMPANY**

*A Member of General Telephone and Electronics Corporation*

**AUGUST 1965**

New numbers in this directory become effective August 7, 1965

FOR EMERGENCY CALLS SEE INSIDE FRONT COVER



# EVERETT AND VICINITY

including

ARLINGTON  
CAMANO ISLAND  
DARRINGTON  
DUVALL  
GOLD BAR  
GRANITE FALLS

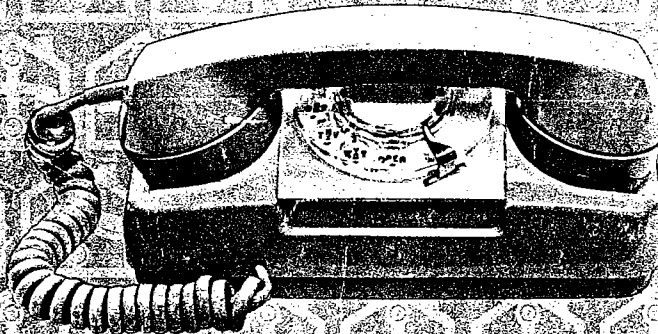
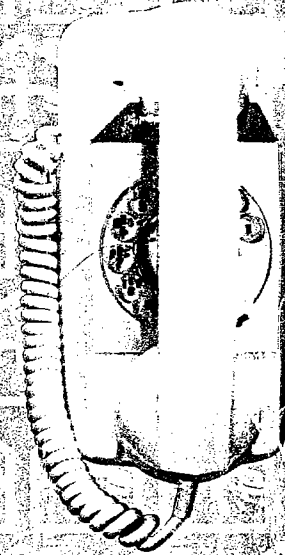
INDEX  
LAKE STEVENS  
MARYSVILLE  
MONROE  
MUKILTEO  
SILVANA  
SKYKOMISH

SNOHOMISH  
STANWOOD  
STARTUP  
SULTAN

Also alphabetical listings  
for Carnation

Area Code 206

today's home  
needs more than  
one phone  
...get an extension



**GENERAL TELEPHONE COMPANY OF THE NORTHWEST, INC.**



*A Member of the GTE Family of Companies*

AUGUST 3, 1969



**GTE**  
**GENERAL**  
**TELEPHONE**

ARLINGTON  
CAMANO ISLAND  
DARRINGTON  
GOLD BAR  
GRANITE FALLS  
INDEX  
LAKE STEVENS

**EVERETT AND VICINITY**

Including  
LAKEWOOD  
MARYSVILLE  
MONROE  
MUKILTEO

SILVANA  
SKYKOMISH  
SNOHOMISH  
STANWOOD  
STARTUP  
STEVENS PASS  
SULTAN





# Everett And Vicinity

Including  
Arlington/Camano Island/Darrington/Gold Bar/Granite Falls  
Index/Lake Stevens/Lakewood/Marysville/Mill Creek  
Monroe/Mukilteo/Silvana/Skykomish/Snohomish  
Stanwood/Startup/Stevens Pass/Sultan



This directory is provided to  
you pursuant to the filed  
tariffs of General Telephone  
Company of the Northwest, Inc.

**October 1985/86**  
**Area Code 206**

For Emergency Calls See Inside Front Cover



December

1995/96

# Snohomish County

Alphabetical Listings for

Arlington • Camano Island • Darrington • Everett  
Gold Bar • Granite Falls • Index • Lake Stevens  
Lakewood • Marysville • Mill Creek • Monroe  
Mukilteo • Silvana • Skykomish • Snohomish  
Stanwood • Startup • Stevens Pass • Sultan



# GTE

## *The Everything Pages*<sup>®</sup>

**new**

An improved phone book  
with more information for you.

Split Residential &  
Business Listings

Auto Guide

Quick Tips<sup>®</sup>

Turn the page to  
see what else is new.



**and more**

See back cover for  
additional GTE phone books.



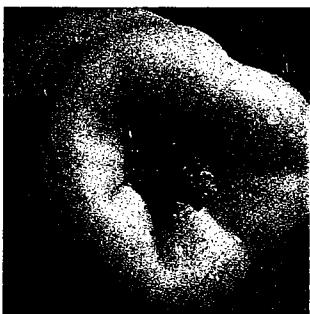
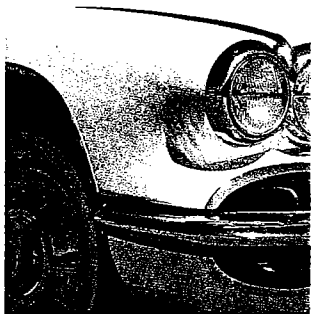
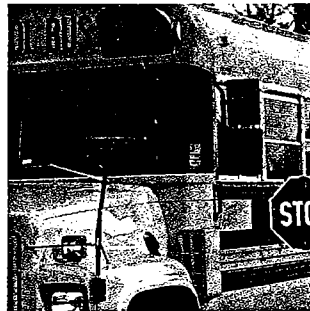
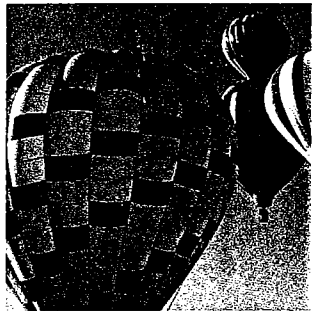
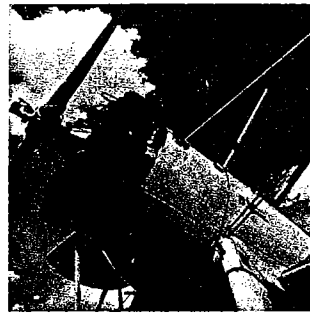
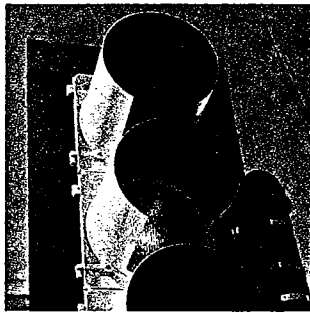
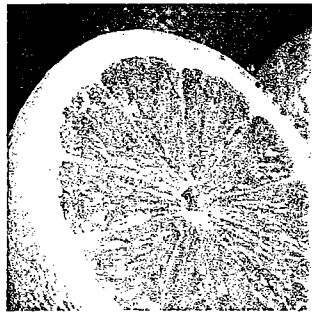
Area Codes 206 and 360

GTE Northwest

DECEMBER 1996

SNOHOMISH COUNTY

KEEP ME UNTIL WINTER 1997



# THE EVERYTHING PAGES®

INSIDE LOOK™ MAGAZINE • COUPONS • QUICK TIPS®



ARLINGTON • CAMANO ISLAND • DARRINGTON • EVERETT • GOLD BAR • GRANITE FALLS  
INDEX • LAKE STEVENS • LAKEWOOD • MARYSVILLE • MILL CREEK • MONROE • MUKILTEO  
SILVANA • SKYKOMISH • SNOHOMISH • STANWOOD • STARTUP • STEVENS PASS • SULTAN

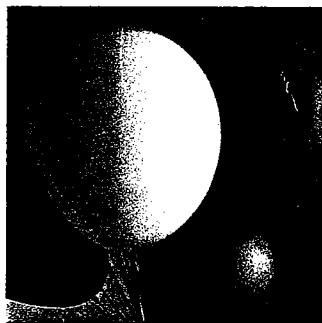
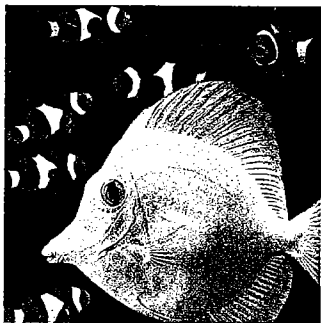
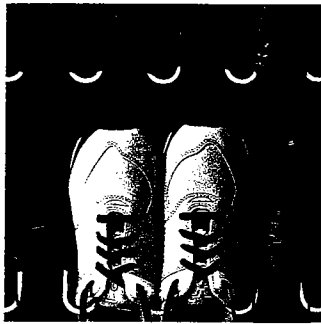
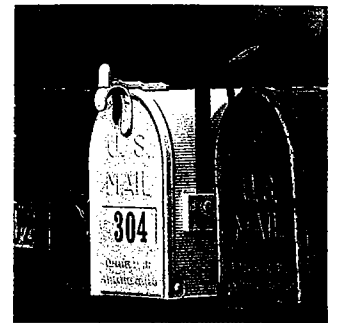
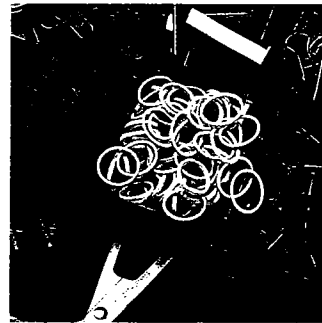
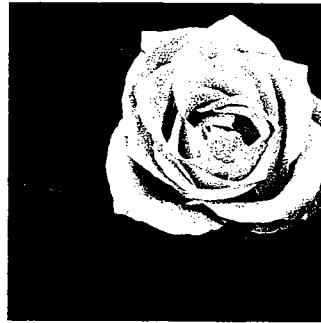
AREA CODES 206 & 360 • GTE NORTHWEST • <http://superpages.GTE.net>

The White & Yellow Pages are printed on paper containing 30% minimum post consumer recycled fiber. © 1996 GTE Directories Corporation.

DECEMBER 1997

KEEP ME UNTIL WINTER 1998

SNOHOMISH COUNTY



# THE EVERYTHING PAGES®

INSIDE LOOK® • GOVERNMENT PAGES • COUPONS • INTERNET GUIDE



FIND GTE'S NATIONWIDE DIRECTORY ON THE INTERNET AT <http://superpages.GTE.net>

ARLINGTON • CAMANO ISLAND • DARRINGTON • EVERETT • GOLD BAR • GRANITE FALLS  
INDEX • LAKE STEVENS • LAKEWOOD • MARYSVILLE • MILL CREEK • MONROE • MUKILTEO • SILVANA  
SKYKOMISH • SNOHOMISH • STANWOOD • STARTUP • STEVENS PASS • SULTAN

# THE YELLOW PAGES



GET AN IDEA.

© 1998 YPPA



BUSINESS & RESIDENTIAL WHITE PAGES



1-800-888-8448  
ANY DIRECTORY,  
ANY TIME



COMMUNITY MAGAZINE



GOVERNMENT PAGES



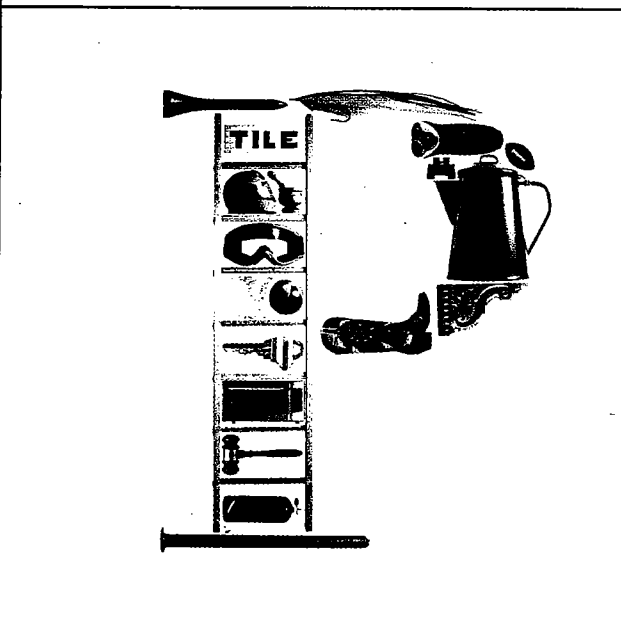
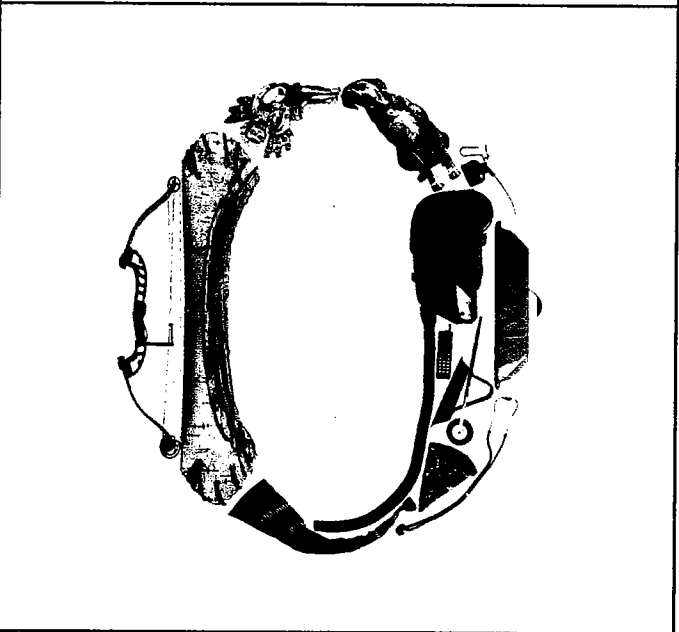
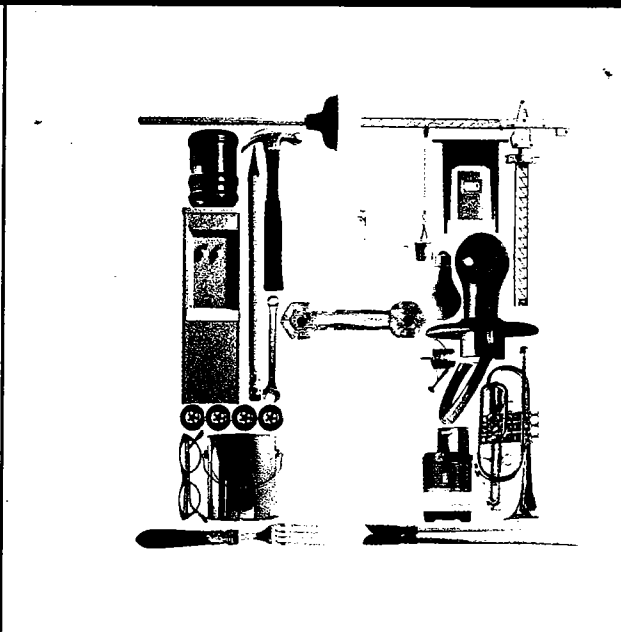
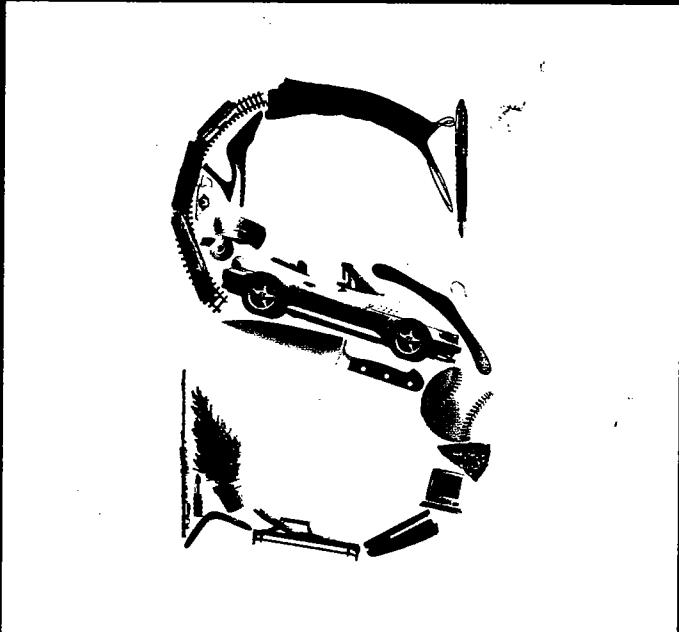
INTERNET GUIDE



COUPONS

COVERING:

DARRINGTON  
INDEX  
LAKEWOOD  
SILVANA  
SKYKOMISH  
STARTUP  
STEVENS PASS



## SNOHOMISH COUNTY

ARLINGTON • CAMANO ISLAND • EVERETT • GOLD BAR • GRANITE FALLS • LAKE STEVENS  
MARYSVILLE • MILL CREEK • MONROE • MUKILTEO • SNOHOMISH • STANWOOD • SULTAN

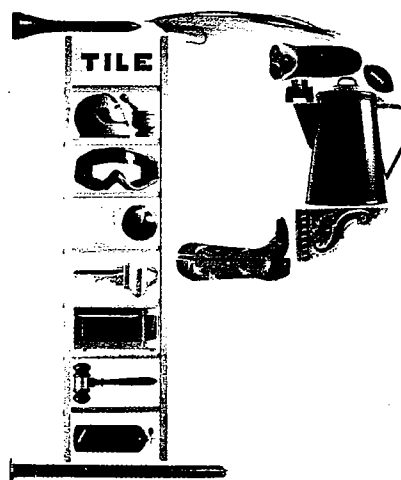
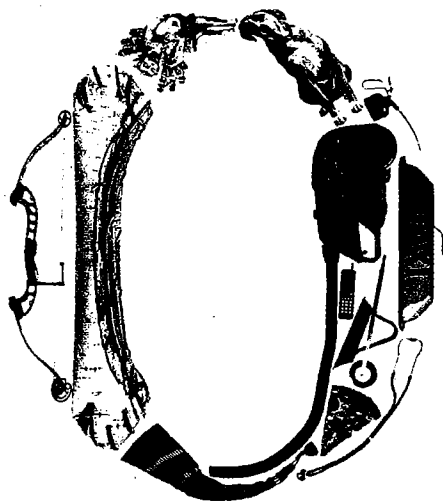
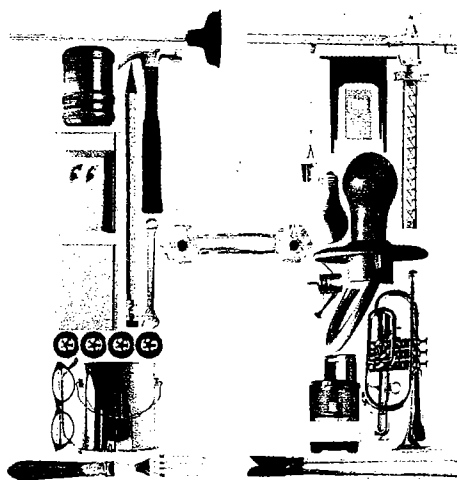
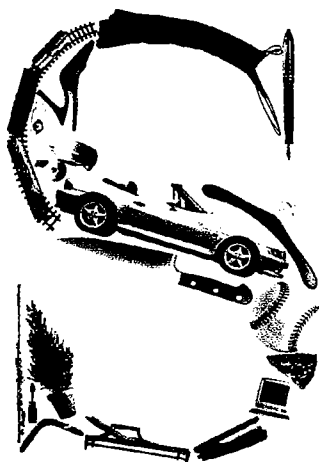
AREA CODES 425 & 360



DECEMBER 1999  
Keep me until Winter 2000

GTE Northwest Inc. • The White & Yellow Pages are printed on paper containing 40% minimum post-consumer recycled fiber. • ©1999 GTE Directories Corporation

2 of 16 SHOP ONLINE AT [superpages.com](http://superpages.com)



KEEP ME UNTIL JANUARY 2002

Order Any Directory, Any Time 1-800-888-8448

ARLINGTON • CAMANO ISLAND • DARRINGTON • EVERETT • GOLD BAR • GRANITE FALLS • INDEX  
LAKE STEVENS • LAKEWOOD • MARYSVILLE • MILL CREEK • MONROE • MUKILTEO • SILVANA  
SKYKOMISH • SNOHOMISH • STANWOOD • STARTUP • STEVENS PASS • SULTAN

INCLUDES BUSINESS LISTINGS FOR: ALDERWOOD MALL • EDMONDS • MILL CREEK • LYNNWOOD

**SNOHOMISH COUNTY**  
AREA CODES 425 & 360

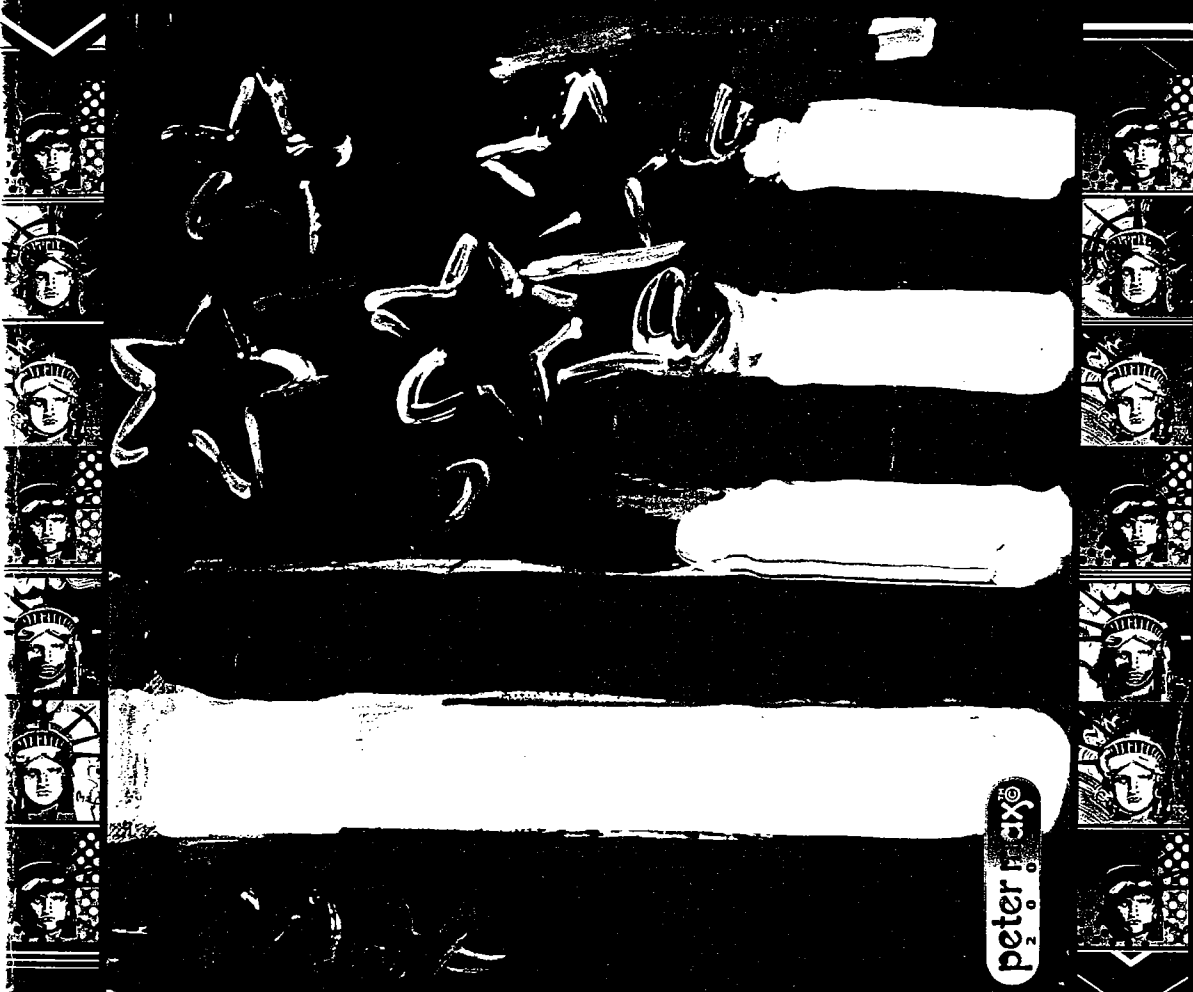


Verizon Northwest Inc. The White and Yellow Pages are printed on paper containing 40% minimum post-consumer recycled fiber. ©2000 Verizon Directories Corp.

SHOP ONLINE AT SUPERPAGES.COM

# verizon

## SUPERPAGES



DECEMBER 2001

- ▶ COMMUNITY MAGAZINE
- ▶ GOVERNMENT PAGES
- ▶ BUSINESS & RESIDENTIAL WHITE PAGES
- ▶ COUPONS
- ▶ INTERNET GUIDE

KEEP ME UNTIL YOUR NEW BOOK ARRIVES IN 2002

ORDER ANY DIRECTORY ANY TIME  
1-800-888-8448



**SUPERPAGES.COM**

Your online source for finding people, businesses and information, locally and nationwide.

Arlington Camano Island Darrington Everett Gold Bar Granite Falls Index Lake Stevens Lakewood Marysville Mill Creek  
Monroe Mukilteo Silvana Skykomish Snohomish Stanwood Startup Stevens Pass Sultan  
Includes Business Listings For: Alderwood Mall Edmonds Mill Creek Lynnwood

# SNOHOMISH COUNTY

Verizon Northwest Inc. The White and Yellow Pages are printed on paper containing up to 40% post-consumer recycled fiber. ©2001 Verizon Directories Corp.

## Lost touch?

Find people nationwide with People Pages.

[www.superpages.com/peoplepages](http://www.superpages.com/peoplepages)



## 30 dollars, do I hear 25?

Compare e-mail price bids on the things you want to buy.

[www.superpages.com/merchantmatch](http://www.superpages.com/merchantmatch)



### #1 Volume Ford Dealer

Skagit, Island, Whatcom & Snohomish Counties

**BUY DIRECT!!**  
Ask for Internet Sales Manager

**1-800-896-5267**  
[www.frontier-ford.com](http://www.frontier-ford.com)

FOR REFERENCE

Do Not Take From This Room

verizon

# SUPERPAGES™

Better Pages for Better Decisions

DECEMBER 2002

CUSTOMER INFO GUIDE

BUSINESS  
& RESIDENTIAL  
WHITE PAGES

COUPONS

## SUPERPAGES.COM™

Your online source for finding people, businesses and information, locally and nationwide.

AREA CODES 425 / 360 / 509

# SNOHOMISH COUNTY

Arlington • Camano Island • Darrington • Everett • Gold Bar • Granite Falls • Index • Lake Stevens • Lakewood • Marysville • Mill Creek • Monroe • Mukilteo • Silvana • Skykomish • Snohomish • Stanwood • Startup • Stevens Pass • Sultan

Includes Business Listings For: Alderwood Mall • Edmonds • Mill Creek • Lynnwood

Verizon Region Inc. • The White and Yellow Pages are printed on paper containing up to 40% post-consumer recycled fiber. • ©2002 Verizon Directories Corp.

LIBRARY COPY



## Lost touch?

Find people nationwide with People Pages.

[pages.com/peoplepages](http://pages.com/peoplepages)

# Valley

Oldsmobile BREAK THROUGH GMC

Commercial Fleet Pricing Direct to the Public

Large Selection New and Used

(360) 424-7111 OR 1-800-326-8898

[www.valleyoldscadgmc.com](http://www.valleyoldscadgmc.com)

Ask for Direct Pricing Manager

# FRONTIER Ford SUPERSTORE

Since 1965

#1 Volume Ford Dealer In Washington

based on new Ford sales for 2001

BUY DIRECT!!  
Ask for Sales Manager

1-800-896-5267  
[www.frontier-ford.com](http://www.frontier-ford.com)

ANYTIME 1-800-888-8448 KEEP ME UNTIL YOUR NEW BOOK ARRIVES IN 2003