

MEMORANDUM

TO: Interested PartiesFROM: Lisa PerrinDATE: March 1, 1994SUBJECT: City of Seattle December 1993 Garbage ReportDECEMBER 1993 FIGURES:Total City Tonnage Breakdown

Self Haul Cars ¹ in December:	606 Tons	19% higher vs same period in '92
Cumulative Self Haul Cars:	8,576 Tons	5% higher vs same period in '92
Self Haul Trucks in December:	5,151 Tons	9% lower vs same period in '92
Cumulative Self Haul Trucks:	76,853 Tons	5% lower vs same period in '92
Residential Collection in December:	12,801 Tons	9% higher vs same period in '92
Cumulative Residential Collection:	144,127 Tons	1% higher vs same period in '92
Commercial Tons in December:	17,753 Tons	9% higher vs same period in '92
Cumulative Commercial Tons:	200,591 Tons	3% higher vs same period in '92
Total Tons Disposed in December:	36,310 Tons	6% higher vs same period in '92
Cumulative Total Tons Disposed:	430,147 Tons	1% higher vs same period in '92

City Owned Transfer Station Trip Breakdown

<u>Type of Vehicle & Material</u>	<u>Number of Trips in December</u>	<u>Number of Trips Year-to-Date</u>
Cars with Garbage:	4,220	59,760
Trucks with Garbage:	9,125	139,115
Contractors with Garbage:	2,005	22,771
Total Yard ² & Wood Waste Trips:	2,231	59,535
Total Transfer Station Trips:	17,581	281,181

Selected Statistics

Cumulative Tons by Residential Collection Contractor through December 1993:

- General Disposal: 96,859 tons - U.S. Disposal: 47,289 tons

Average tons per container³ bound for railhead from transfer stations in December:

- From NRDS: 27 tons/container	- From Bayside Disposal: 26 tons/container
- From SRDS: 27 tons/container	- From Seattle Disposal: 26 tons/container

Average pounds per account⁴ for residential garbage collection:

- Per month for January - December 1992:	165 pounds per month
- Per month for January - December 1993:	162 pounds per month

1) Car tons estimated at 287 pounds per car.

2) See City of Seattle Bi-Monthly Yard Waste Report for yard waste tonnage figures.

3) "Container" refers to truck containers that haul garbage from transfer stations to the railhead.

4) An "account" refers to billing for combined water, sewer, and garbage. Some accounts may have one or more residence on them.

DISTRIBUTION: SWU DIRECTORS, SUPERVISORS, AND PROJECT MANAGERS

WASHINGTON UTILITIES AND TRADING COMPANY
No. TG-940411
55✓

CITY OF SEATTLE GARBAGE TONNAGE 1992 - 1993

Mar-94

Year	Month	CITY OWNED TRANSFER STATIONS				COMMERCIAL TONS			TOTAL TONS				Average Tons per Container				Res Collect Avg Pounds/Account
		Cars	Trucks	Res Collect	Total	Bayside	Seattle Disp	Total	DISPOSED	NRDS	SRDS	BD*	SD**	Res Collect Avg Pounds/Account			
92	1	551	5,807	12,491	18,848	5,959	10,238	16,197	35,045	27.1	26.8	27.8	25.9	176.1			
92	2	587	5,571	10,728	16,886	5,713	9,419	15,133	32,019	27.6	27.2	26.1	25.9	151.2			
92	3	741	6,990	11,825	19,557	5,998	10,633	16,631	36,188	27.3	27.7	26.8	25.6	166.7			
92	4	660	6,780	11,802	19,242	5,360	10,502	15,862	35,104	27.5	27.6	26.7	25.7	166.4			
92	5	779	7,907	11,213	19,899	5,281	10,196	15,476	35,375	27.1	27.0	26.7	25.2	158.0			
92	6	765	7,855	12,049	20,668	5,835	10,961	16,796	37,464	27.5	27.4	26.5	25.4	169.8			
92	7	780	7,228	12,834	20,842	4,479	10,868	15,347	36,189	28.5	28.5	26.5	25.9	180.9			
92	8	825	7,025	11,773	19,622	5,613	10,430	16,043	35,666	28.6	28.0	26.9	25.8	161.0			
92	9	739	7,059	12,086	19,883	5,578	10,699	16,277	36,160	29.1	27.9	25.4	26.0	165.2			
92	10	675	7,266	11,629	19,569	5,819	11,129	16,949	36,518	28.1	27.2	25.9	25.9	159.0			
92	11	569	5,609	11,950	18,128	7,017	10,362	17,379	35,508	29.6	27.6	27.5	26.4	163.3			
92	12	508	5,647	11,775	17,929	6,089	10,158	16,247	34,177	27.7	27.2	26.9	26.8	160.9			
93	1	612	5,610	11,489	17,711	5,856	9,079	14,936	32,647	27.7	27.1	27.4	26.4	156.9			
93	2	575	6,089	10,114	16,778	5,103	9,054	14,156	30,934	27.5	27.0	25.1	26.2	138.1			
93	3	647	6,111	12,354	19,112	7,430	10,864	18,295	37,407	27.3	26.6	24.3	26.2	168.6			
93	4	637	6,177	12,119	18,933	5,875	10,864	16,739	35,672	27.2	27.7	27.2	26.3	165.4			
93	5	802	6,608	11,951	19,362	7,093	12,125	19,218	38,580	24.3	28.1	28.8	28.9	163.0			
93	6	814	6,786	12,852	20,452	6,669	11,282	17,951	38,404	26.7	27.9	27.9	26.2	175.3			
93	7	855	6,908	12,400	20,164	5,935	10,901	16,836	37,000	27.0	26.5	24.2	26.0	169.1			
93	8	858	7,485	12,346	20,690	6,637	10,819	17,457	38,146	26.6	26.2	26.9	26.2	168.2			
93	9	807	7,580	12,210	20,597	4,964	10,584	15,548	36,145	25.8	26.9	25.5	26.3	NA			
93	10	762	7,120	11,414	19,296	4,896	10,567	15,463	34,759	25.8	27.1	26.8	26.6	155.4			
93	11	599	5,228	12,077	17,904	6,408	9,830	16,238	34,142	26.1	26.5	25.7	25.7	162.7			
93	12	606	5,151	12,801	18,557	7,048	10,705	17,753	36,310	26.3	26.0	26.3	25.5	172.5			
Total 1993		8,576	76,853	144,127	229,556	73,915	126,676	200,591	430,147	26.5	27.0	26.3	26.4	162.3			
Total 1992		8,178	80,742	142,154	231,074	68,742	125,596	194,338	425,413	28.0	27.5	26.6	25.9	164.9			
Total 1991		7,947	68,576	140,722	217,245	74,389	147,868	222,257	439,502	28.5	28.0	27.0	25.7	NA			
Total 1990 (5)		7,253	73,939	140,528	221,720	78,461	157,664	236,125	457,845	NA	NA	NA	NA	NA			
Total 1989 (3,4)		6,919	58,720	143,221	208,860	75,513	121,029	196,542	405,402	NA	NA	NA	NA	NA			
Total 1988 (2)		11,810	75,557	179,966	267,333	72,680	125,494	198,174	465,507	NA	NA	NA	NA	NA			
Total 1987 (1)		13,622	88,147	188,800	290,569	55,212	170,703	225,915	516,484	NA	NA	NA	NA	NA			
Total 1986		25,278	105,442	190,584	321,304	50,947	151,189	202,136	523,440	NA	NA	NA	NA	NA			

* BD = Bayside Disposal

** SD = Seattle Disposal

(1) Yard Waste "Clean Green" Program began in August, 1987

(2) Curbside Recycling Program began in February, 1988

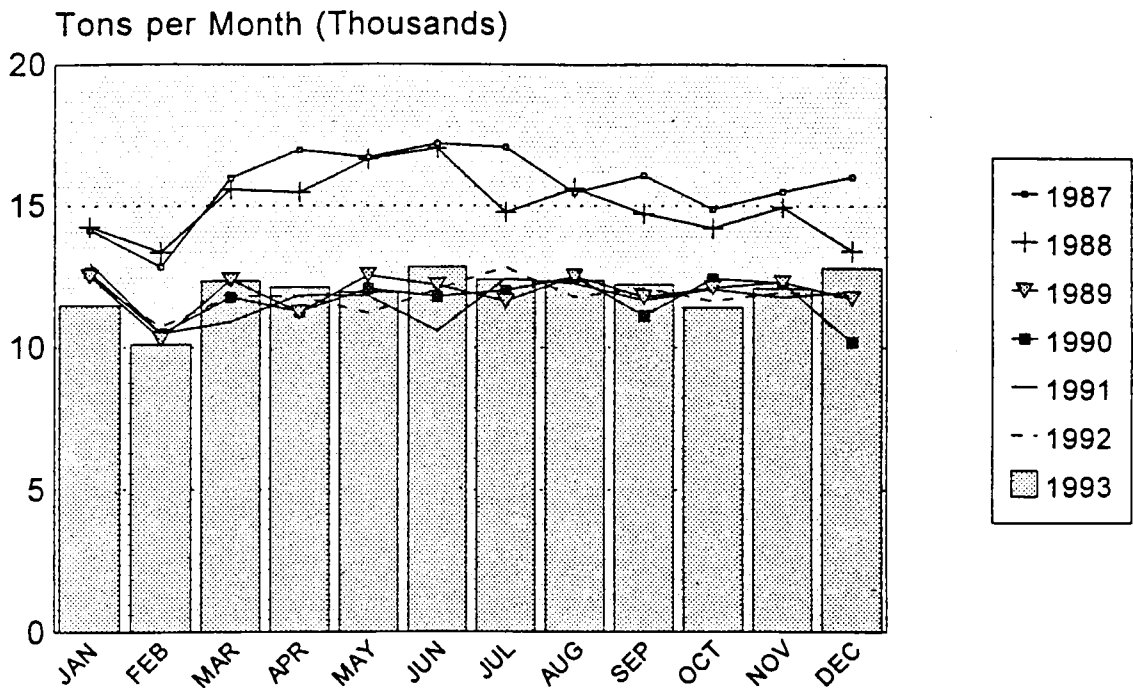
(3) Curbside Yard Waste Collection began in January, 1989

(4) Apartment Recycling Diversion Credit Program began in May, 1989

(5) Wood Waste Program at Transfer Stations began in January, 1990

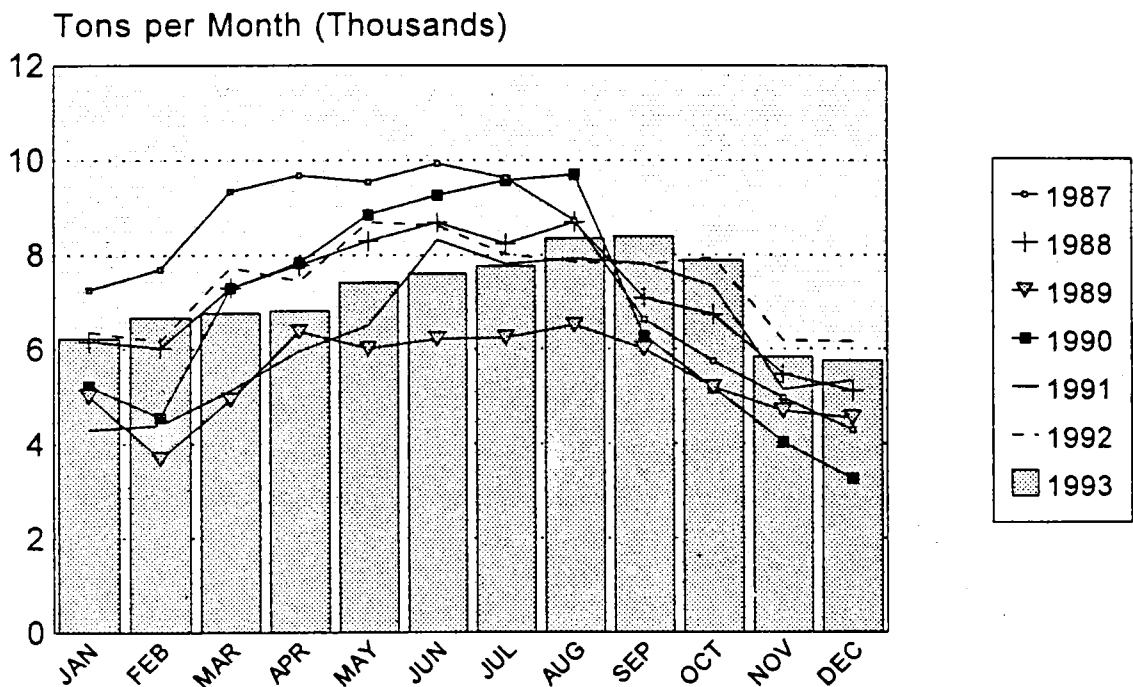
RESIDENTIAL COLLECTION

Total City Tons

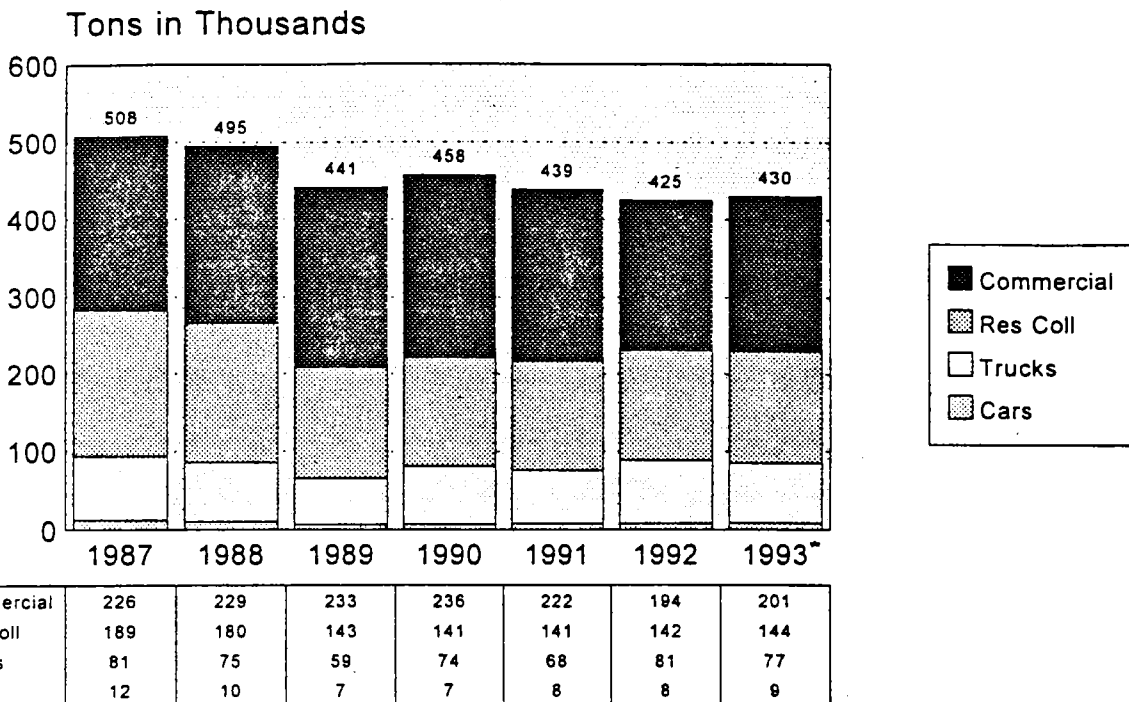


TRANSFER STATION SELF HAUL

Self Haul Cars and Trucks



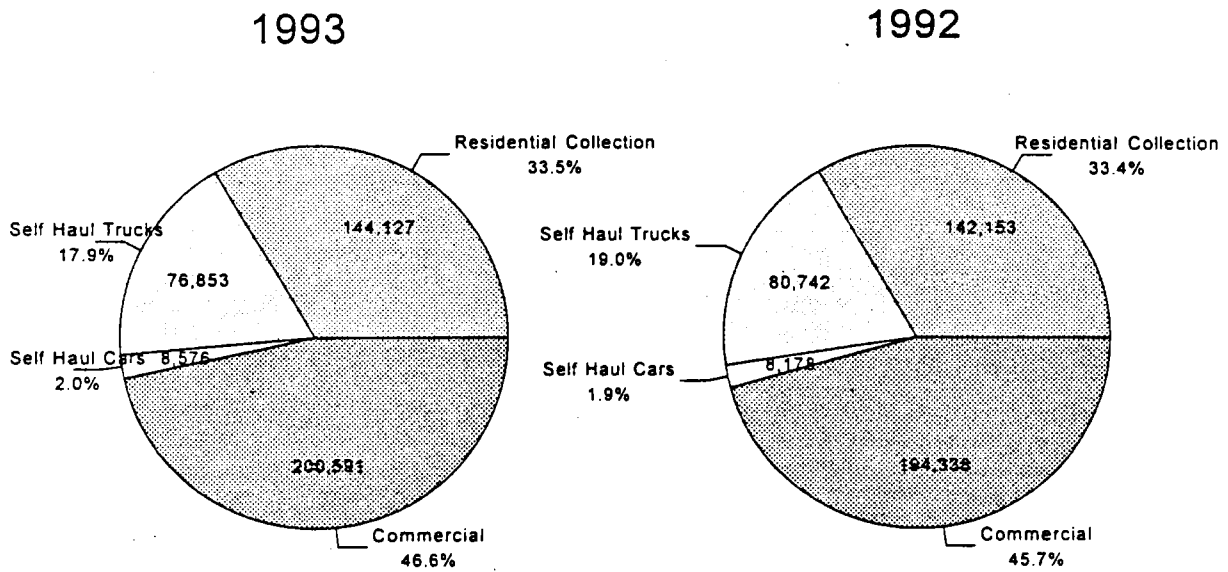
CITY OF SEATTLE TOTAL TONS DISPOSED



* 1993 tons are through November

CITY OF SEATTLE TOTAL TONS DISPOSED

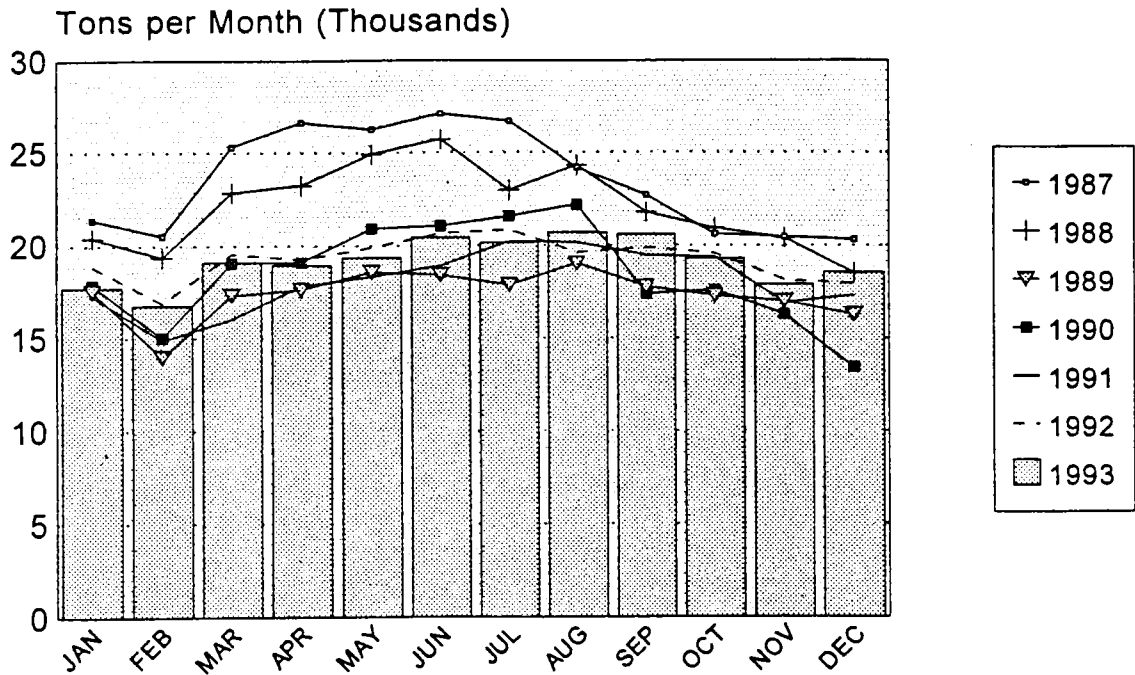
Cumulative Garbage Tonnage



1993 Tons through November = 430,147 1992 Tons through December = 425,413

CITY OWNED TRANSFER STATIONS

Total Tons Disposed



COMMERCIAL TRANSFER STATIONS

Total Tons Disposed

