

WALLA WALLA COUNTY
PUBLIC WORKS DEPARTMENT



PORT KELLEY RD RAILROAD CROSSING

CRP 18-01

RAIL-2036(033)

TA-6415

Commissioners

District 1

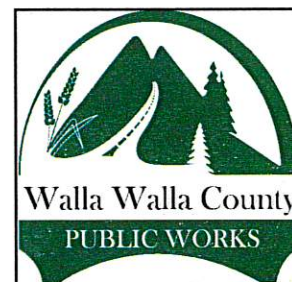
James K. Johnson

District 2

Todd L. Kimball

District 3

Greg A. Tompkins

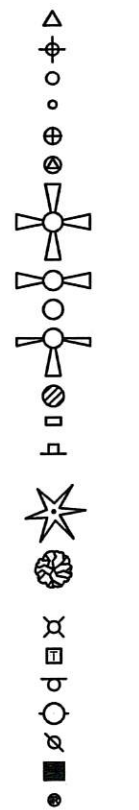


PO BOX 813
WALLA WALLA, WA 99362

(509) 524-2710
(509) 524-2738 - FAX

LEGEND

EXISTING



NEW



- ANGLE POINT
- BENCH MARK
- BLOCK CORNER
- IRON PIPE
- MONUMENT (IN CASE)
- MONUMENT (SURFACE)

- SECTION CORNER
- QUARTER CORNER
- SIXTEENTH CORNER
- CLOSING CORNER

- SOIL BORING
- MAIL BOX
- SIGN

- TREE (Conifer)
- TREE (Deciduous)

- LIGHT
- TELEPHONE RISER
- UNDERGROUND UTILITY MARKER
- UTILITY POLE
- GUY
- CATCH BASIN
- IRRIGATION RISER

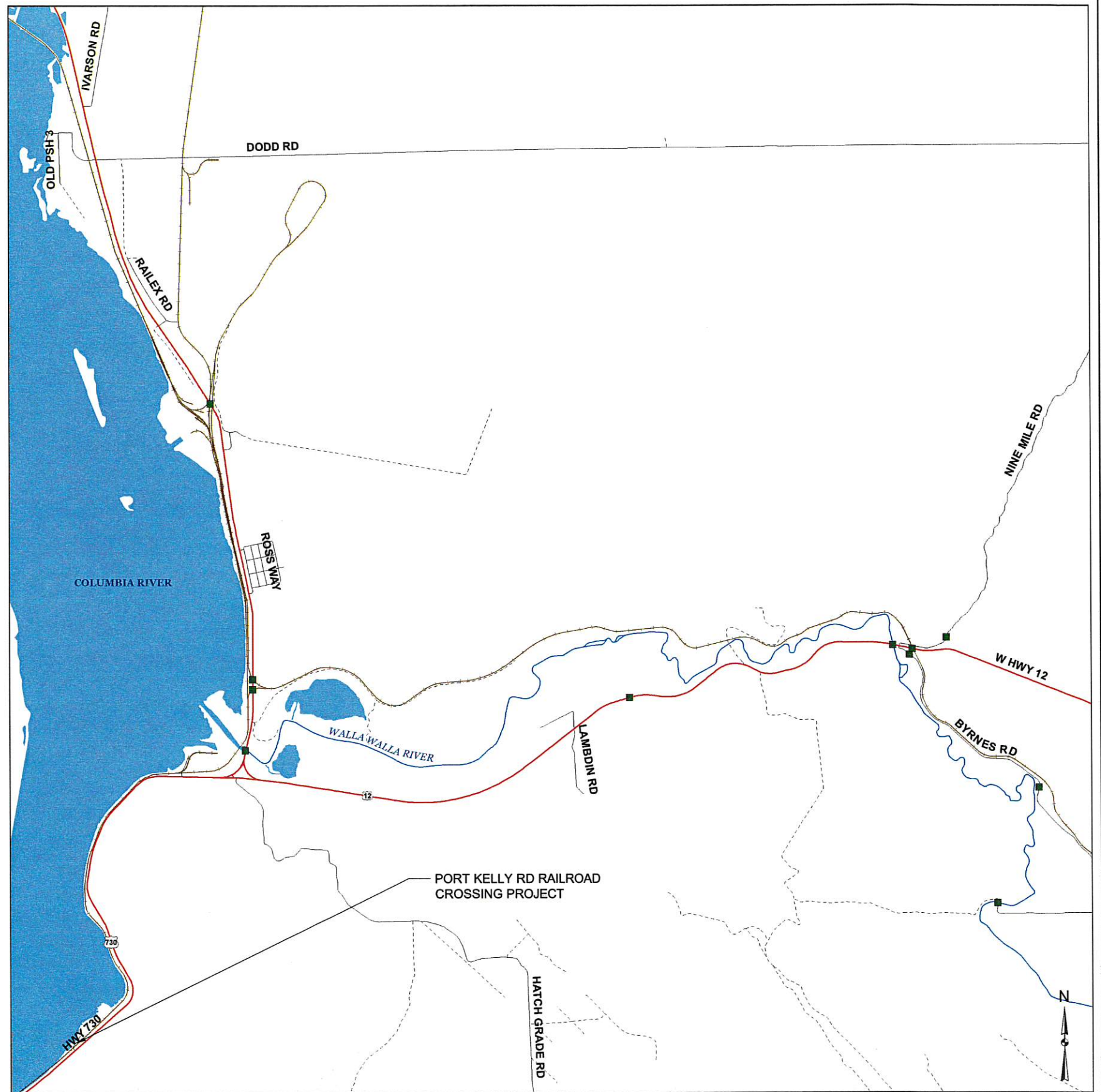
UTILITIES (EXISTING)

- GAS
- POWER (BURIED)
- SANITARY SEWER
- WATER
- TELEPHONE (BURIED)
- TV (BURIED)



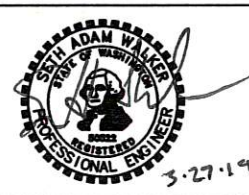
THE UNDERGROUND UTILITIES SHOWN HAVE BEEN LOCATED AS ACCURATELY AS POSSIBLE FROM FIELD SURVEY INFORMATION AND EXISTING DRAWINGS. WALLA WALLA COUNTY MAKES NO GUARANTEES THAT THE UNDERGROUND UTILITIES SHOWN COMPRISE ALL SUCH UTILITIES IN THE AREA, EITHER IN SERVICE OR ABANDONED. FURTHER, WE DO NOT WARRANT THAT THE UNDERGROUND UTILITIES SHOWN ARE IN EXACT LOCATION INDICATED, ALTHOUGH WE DO CERTIFY THAT THEY ARE LOCATED AS ACCURATELY AS POSSIBLE FROM INFORMATION AVAILABLE.

SHEET INDEX	
SHEET	DESCRIPTIONS
1	COVER SHEET
2	VICINITY MAP
3	SUMMARY OF QUANTITIES
4	PLAN & PROFILE
T1	TRAFFIC CONTROL PLAN

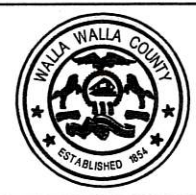


DRAWN: SAH					
DESIGNER: SAW					
CHECKED: SAW					
PROJ. ENG.: SAW					
APPROVED BY: SAW					
3/26/2019	REV DATE	REVISION	BY	APP'D	

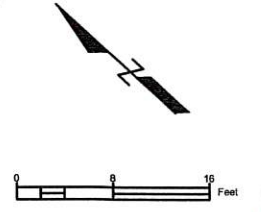
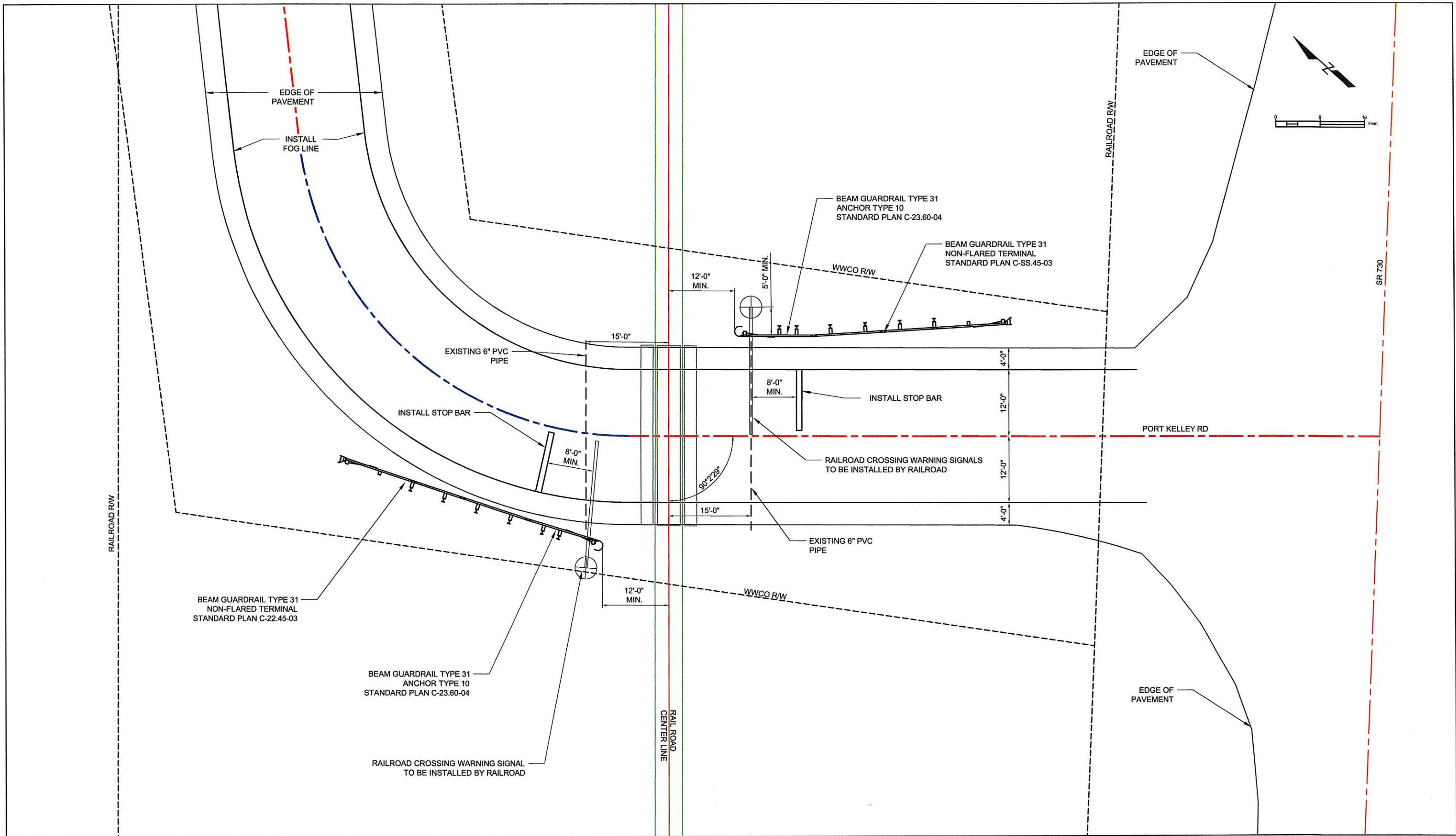
REGION NO.	STATE	FED. AID PROJ. NO.
10	WASH	RAIL-2036(033) TA-6415
JOB NUMBER		
18-01		



Walla Walla County
PUBLIC WORKS DEPARTMENT
3/26/2019
PLOT DATE

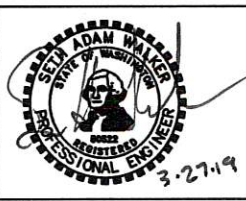


PORT KELLEY RD RAILROAD CROSSING		SHEET
VICINITY MAP		2

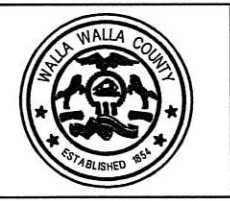


DRAWN: SAH				REGION NO.	STATE	FED. AID PROJ. NO.
DESIGNER: SAH				10	WASH	RAIL-2036(033) TA-6415
CHECKED: SAW				JOB NUMBER		
PROJ. ENG.: SAW				18-01		
APPROVED BY: SAW						
3/26/2019	REV DATE	REVISION	BY	APPD		

RAIL-2036(033)
TA-6415



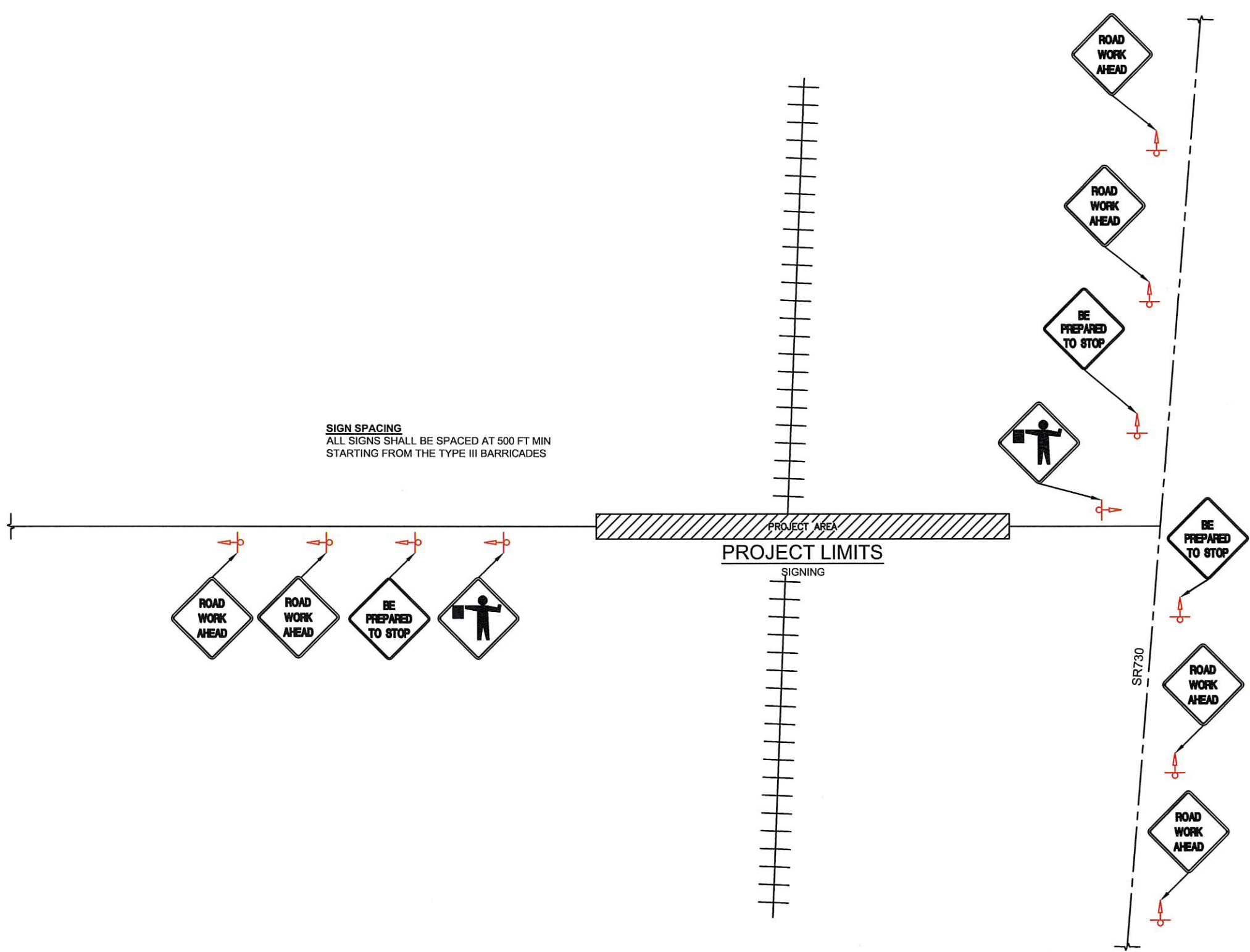
Walla Walla County
PUBLIC WORKS DEPARTMENT
3/26/2019
PLOT DATE



PORT KELLEY RD RAILROAD CROSSING

PLAN SHEET

SHEET **4**



SIGN SPACING
 ALL SIGNS SHALL BE SPACED AT 500 FT MIN
 STARTING FROM THE TYPE III BARRICADES

LEGEND

- TEMP. SIGN
- SIGN DOUBLE POST
- TYPE III BARRICADE

DRAWN: SAH				REGION NO.	STATE	FED. AID PROJ. NO.
DESIGNER: SAH				10	WASH	RAIL-2036(033) TA-6415
CHECKED: SAW				JOB NUMBER		
PROJ. ENG.: SAW				18-01		
APPROVED BY: SAW						
3/26/2019	REV DATE	REVISION	BY	APP'D		



Walla Walla County
 PUBLIC WORKS DEPARTMENT



PORT KELLEY RD RAILROAD CROSSING

TRAFFIC CONTROL

SHEET
T1

3-27-19
 3/27/2019
 PLOT DATE