

**CONFIDENTIAL PER WAC 480-07-160**

2018 Affiliated Interest Report for Torre Refuse & Recycling, LLC (G-260) d/b/a Sunshine Disposal & Recycling in accordance with WAC 480-70-079 (Redacted Version)

Torre Refuse & Recycling, LLC (TRR) shares common ownership and control with the following companies:

Ada-Lin Waste Systems, Inc. (AWS)  
WSF, LLC (WSF)  
South Clayton Land Company, LLC (SCLC)  
Sunshine Recyclers, Inc. (SRI)  
Sunshine Disposal, Inc. (SDI) (wholly owned by Sunshine Recyclers, Inc.)

TRR provides the following services to AWS, SRI and SDI:

Equipment Repair, Management, Procurement, Facility, Accounting, and Customer Service.

The total amount paid by each entity for these combined services in 2018 was:

AWS: \$167,919  
SDI: \$188,060  
SRI: \$ [REDACTED]

These totals are determined through an allocation of actual usage of these services by the various entities.

These 3 companies also have loans due to or due from TRR as needed. Interest is paid at the bank's prime rate (currently 5.25%). The terms are perpetual. The balances at 12/31/2017 were as follows:

AWS payable to TRR: \$ 344,710  
TRR payable to SRI: \$ [REDACTED]  
SDI payable to TRR: \$ 584,845

WSF provides the following services to TRR:

Container maintenance and manufacturing and truck component purchasing. (\$ [REDACTED] in 2018)

SCLC provides the following services to TRR: Facility Rental (\$24,000 in 2017)

The following are the owners and officers of the related companies with affiliated transactions in excess of \$100,000:

Torre Refuse and Recycling, LLC

Marc Torre, Managing Member (80% owner)  
Michael Torre, Member (20% owner)

WSF, LLC

Marc Torre, Managing Member (95% owner)  
Michael Torre, Member (5% owner)

Ada-Lin Waste Systems, Inc.

Marc Torre, President (100% owner)  
 Michael Torre, Secretary/Treasurer

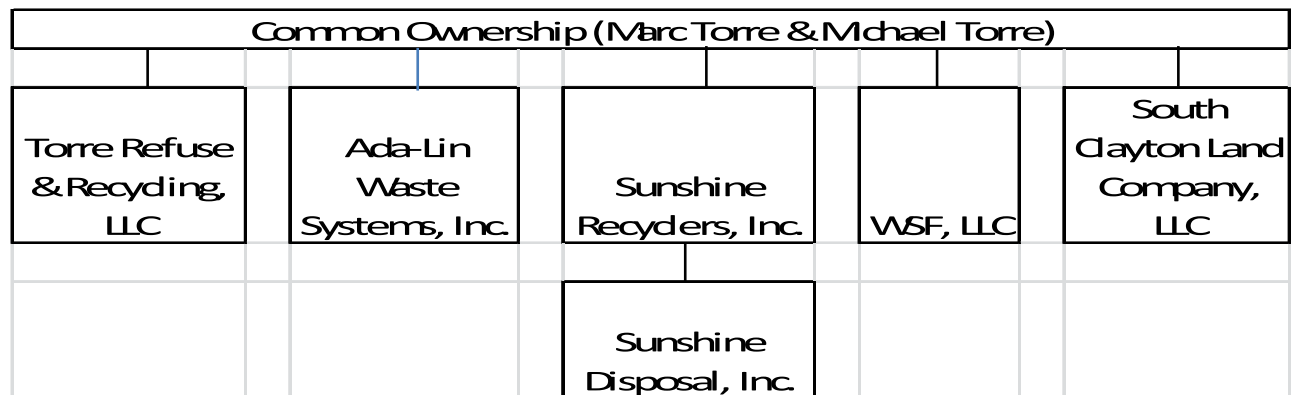
Sunshine Recyclers, Inc.

Marc Torre, President (100% owner)  
 Michael Torre, Vice President/Secretary/Treasurer

Sunshine Disposal, Inc. (100% owned by SRI)

Marc Torre, President  
 Michael Torre, Vice President/Secretary/Treasurer

The organization chart is as follows:



The following are financial statements for related in compliance with WAC 480-70-079(3)(A)

	Ada-Lin Waste Systems, Inc.	Sunshine Disposal, Inc.	Sunshine Recyclers, Inc.	WSF, LLC
<b>Balance Sheet</b>				
Current Assets	834,687	952,287		
Fixed Assets	328,790	1,059,257		
Other Assets	99,000	5,542		
Total Assets	<u>1,262,477</u>	<u>2,016,996</u>		
Liabilities	45,375	168,581		
Due Related Entity	344,710	584,845		
Equity	872,393	1,263,570		
Total Liab + Equity	<u>1,262,477</u>	<u>2,016,996</u>		
<b>Income Statement</b>				
Revenue	1,016,068	2,876,491		
Expense	832,489	2,798,009		
Net Income	183,579	78,482		