

NATIONAL RAILROAD PASSENGER CORPORATION

187 South Holgate, Bldg A

Seattle, WA 98134



February 28, 2019

Washington Utility Transportation Committee  
1300 S. Evergreen Park Drive SW  
PO Box 47250  
Olympia, WA 98504  
Attn: Betty Young  
Transportation Planning Specialist

Subject: Follow up on Amtrak Seattle King St Coach Yard Locomotive Shop, Rule Exemption Request, WAC 480-60-050, dated February 15, 2019. After my visit with WUTC representatives Bob Boston and Evan Enright I wish to add one additional location for a Side Clearance waiver

Amtrak King Street Coach Yard tracks 200, and 201 South end of KSCY tracks 200 and 201 - light pole, see attached images. Reference item 6 in yellow diamond on the attached drawing.

KSCY tracks 200, 201, 202 and 203 will be placarded with NO Clearance signs. Further, tracks 200, 201, and 202 are to be designated as mechanical tracks – train crews will require permission from the designated mechanical department representative in order to enter. KSCY tracks 200, 201 and 202 will be NOT be used by Sound Transit or BNSF crews. Amtrak general orders for Seattle KSCY will designate KSCY tracks 200, 201 and 202 will be listed as no clearance – no riding on side of equipment at any time. KSCY track 203 to be posted and listed as no side clearance on east side.

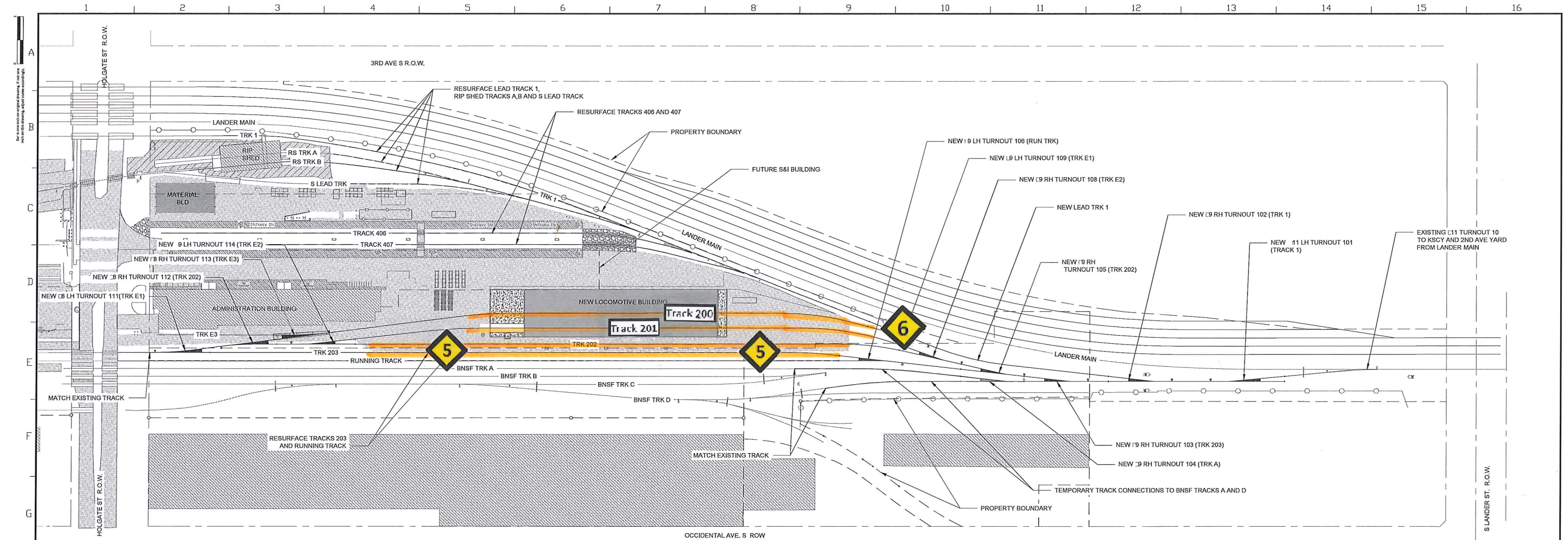
KSCY tracks 200, 201 and 202 designated Mechanical servicing tracks and will be used by Amtrak's mechanical department to service and repair locomotive and other passenger equipment. All moves are to be coordinated with Amtrak mechanical personnel.

If you need any additional information, I can be reached via phone at 206 396 4089 or email at [radeked@amtrak.com](mailto:radeked@amtrak.com). Thank you for your time and assistance with this matter.

Sincerely,

A handwritten signature in black ink that reads "Daniel D. Radeke".

Daniel D. Radeke  
Sr. Project Manager  
Amtrak Engineering



BID PACKAGE 1 NEW TRACK SUMMARY	
TRACK □	APPROX. NEW TRACK
TRACK 1 (CONC TIES)	372 T.F.
TRACK E1 (CONC TIES)	390 T.F.
TRACK E2 (CONC TIES)	950 T.F.
TRACK E3 (CONC TIES)	200 T.F.
TRACK 202 (CONC TIES)	1050 T.F.
TRACK 203	100 T.F.
TEMP TRACK A CONNECTION	250 T.F.
TEMP TRACK D CONNECTION	250 T.F.
<b>NEW TRACK TOTAL</b>	<b>4150 T.F.</b>

TOTAL INCLUDES TRACK INSIDE LOCOMOTIVE BUILDING

BID PACKAGE 1 NEW TURNOUT SUMMARY		
TRACK □	TURNOUT	TYPE
TRACK 1	101,102	11 LH, 09 RH
TRACK E1	109, 111	09 LH, 08 LH
TRACK E2	114, 108	09 LH, 09 RH
TRACK E3	113	08 RH
TRACK 202	105,112	09 RH, 10 RH
TRACK 203	103	09 RH
RUNNING TRACK	106	09 LH
TRACK A	104	09 RH
TOTALS	TYPE	QTY
	11 LH	1
	09 RH	5
	09 LH	3
	08 RH	2
	08 LH	1

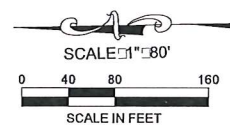
BID PACKAGE 1 RESURFACE SUMMARY	
TRACK □	APPROX. TRACK RESURFACE
LEAD TRACK 1	1230 T.F.
TRACK 203	1135 T.F.
RUNNING TRACK	1500 T.F.
S LEAD TRACK	300 T.F.
RIP SHED TRACK A	500 T.F.
RIP SHED TRACK B	300 T.F.
TRACK 406	900 T.F.
TRACK 407	1000 T.F.
<b>APPROX. RESURFACE TOTAL</b>	<b>5702 T.F.</b>

**NOTES**

- ALL TRACK WORK MUST CONFORM TO AMTRAK STANDARDS AND TRACK DESIGN SPECIFICATIONS.
- DESIGN SPEED IS 5 MPH.
- SEE DRAWING C010 FOR GENERAL CONSTRUCTION NOTES.
- CONTRACTOR RESPONSIBLE FOR PROVIDING DEWATERING AND TEMPORARY SHORING AS NECESSARY.
- NEW TRACKS SHALL BE 136I RAIL AND CONCRETE TIES. SEE AMTRAK STANDARD PLANS 760088 SHEETS 1 AND 2 IN SPECS. CONTRACTOR SHALL FIELD VERIFY EXISTING RAIL WEIGHTS AT TIE-IN POINTS WITH NEW RAIL AND INSTALL TRANSITION RAIL AS NECESSARY.
- DARKER SOLID TRACK LINE WEIGHTS SHOW NEW TRACKS.
- DARKER DASHED TRACK LINES SHOW RESURFACED TRACKS.
- LIGHTER TRACK LINE WEIGHTS SHOW EXISTING TRACK.
- 11 AND 09 TURNOUTS ARE BNSF-UP STANDARD.
- 08 TURNOUTS ARE AMTRAK STANDARD. SEE AMTRAK STANDARD PLAN 73184-H SHEET 1 IN SPECS.

**TRACK PLAN**

1  
T102

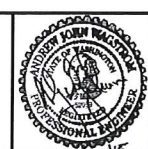


DATE PLOTTED: 9/29/2015 12:46:55 PM  
FILE NAME: K:\V\Amtrak\14435008\03\_Production Documents\01\_CAD\03\_Construction Documents\Bid Package 01 - (Phase 4)\T102.dwg

No.	Revisions	Date	By
7	100% SUBMITTAL	09/30/2015	GAC
6	90% SUBMITTAL	04/22/2015	GAC
5	60% SUBMITTAL	09/17/2014	GAC
4	45% SUBMITTAL	05/25/2014	CAC
2	30% SUBMITTAL	05/17/2011	BWB
1	15% SUBMITTAL	04/13/2011	BWB

**Amtrak®**  
This material is owned by and is the sole and exclusive property of the National Railroad Passenger Corporation (Amtrak), Office of Engineering, and is supplied on a confidential basis solely for use in connection with the design and construction of Amtrak facilities and equipment. The reproduction, display, sale or other disposition of this document without the express written consent of the National Railroad Passenger Corporation, Office of Engineering, is prohibited.

Office of Chief Engineer  
**STRUCTURES**  
 National Railroad Passenger Corporation  
 30th Street Station, Philadelphia, Pennsylvania 19104



**HANSON**  
 Hanson Professional Services Inc.

**CSA ARCHITECTURE**  
 Cedar Street ARCHITECTURE  
 5151 Market Drive, Suite 205 | Danvers Grove, IL 60015  
 Phone (630) 429-4100 | Fax (630) 429-4119

**TKDA**  
 444 Cedar Street, Suite 1500  
 St. Paul, MN 55101  
 Phone (651) 292-4400  
 Fax (651) 292-0083  
 tkda.com  
 TKDA# 0014435.008

SEATTLE WASHINGTON  
**AMTRAK PACIFIC NORTHWEST**  
 BID PACKAGE 01 - LOCOMOTIVE SHOP  
**TRACK PLAN**  
 Designed: MCM Drawn: MCM Checked: AJW Date:

File No:	C.TR.100057.0001
Work Elem. No:	273491
Sheet No.:	OFXXX
Dwg. No.:	T102