

2016 Affiliated Interest Report for Torre Refuse & Recycling, LLC (G-260) d/b/a Sunshine Disposal & Recycling in accordance with WAC 480-70-079 (Redacted Version)

Torre Refuse & Recycling, LLC (TRR) shares common ownership and control with the following companies:

Ada-Lin Waste Systems, Inc. (AWS)  
WSF, LLC (WSF)  
South Clayton Land Company, LLC (SCLC)  
Sunshine Recyclers, Inc. (SRI)  
Sunshine Disposal, Inc. (SDI) (wholly owned by Sunshine Recyclers, Inc.)

TRR provides the following services to AWS, SRI and SDI:

Equipment Repair, Management, Procurement, Facility, Accounting, and Customer Service.

The total amount paid by each entity for these combined services in 2016 was:

AWS: \$117,268  
SDI: \$188,542  
SRI: \$ [REDACTED]

These totals are determined through an allocation of actual usage of these services by the various entities.

These 3 companies also have loans due to or due from TRR as needed. Interest is paid at the bank's prime rate (currently 4.25%). The terms are perpetual. The balances at 12/31/2016 were as follows:

AWS payable to TRR: \$ 84,065  
TRR payable to SRI: \$ [REDACTED]  
TRR payable to SDI: \$ 97,782

WSF provides the following services to TRR:

Container maintenance and manufacturing and truck component purchasing. (\$ [REDACTED] in 2016)

SCLC provides the following services to TRR: Facility Rental (\$24,000 in 2016)

The following are the owners and officers of the related companies with affiliated transactions in excess of \$100,000:

Torre Refuse and Recycling, LLC

Marc Torre, Managing Member (80% owner)  
Michael Torre, Member (20% owner)

Ada-Lin Waste Systems, Inc.

Marc Torre, President (100% owner)  
Michael Torre, Secretary/Treasurer

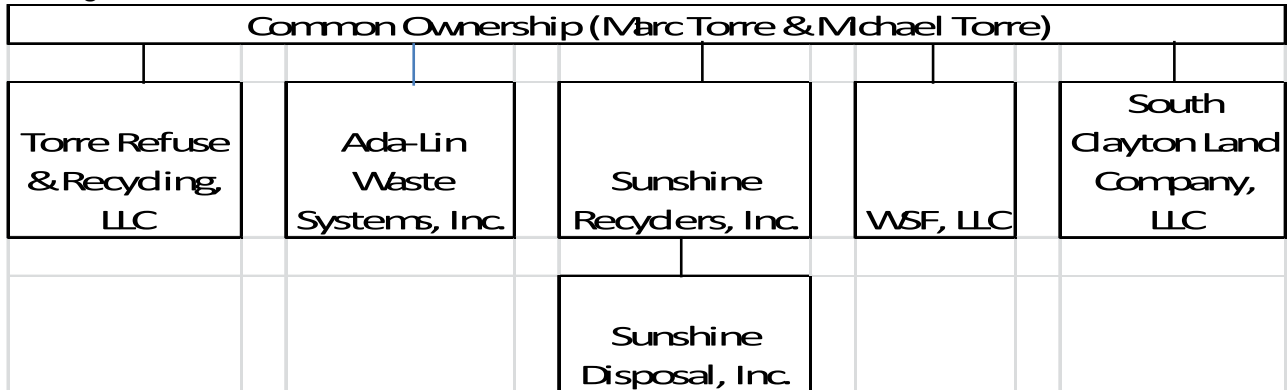
Sunshine Recyclers, Inc.

Marc Torre, President (100% owner)  
 Michael Torre, Vice President/Secretary/Treasurer

Sunshine Disposal, Inc. (100% owned by SRI)

Marc Torre, President  
 Michael Torre, Vice President/Secretary/Treasurer

The organization chart is as follows:



The following are financial statements for related in compliance with WAC 480-70-079(3)(A)

	Ada-Lin Waste Systems, Inc.	Sunshine Disposal, Inc.	Sunshine Recyclers, Inc.
<b>Balance Sheet</b>			
Current Assets	358,175	563,590	
Fixed Assets	240,221	597,848	
Other Assets	99,000	5,542	
Total Assets	<u>697,395</u>	<u>1,166,891</u>	
Liabilities	41,454	160,354	
Due Related Entity	84,065	(97,782)	
Equity	571,876	1,104,318	
Total Liab + Equity	<u>697,395</u>	<u>1,166,891</u>	
<b>Income Statement</b>			
Revenue	776,686	2,537,303	
Expense	618,117	2,527,303	
Net Income	158,568	159,931	