

Exhibit No. ____ (BTC-2)
Dockets UE-140188/UG-140189
Witness: Bradley T. Cebulko

**BEFORE THE WASHINGTON
UTILITIES AND TRANSPORTATION COMMISSION**

**WASHINGTON UTILITIES AND
TRANSPORTATION COMMISSION,**

Complainant,

v.

AVISTA CORPORATION,

Respondent.

**DOCKETS UE-140188 and
UG-140189
(Consolidated)**

**EXHIBIT TO
TESTIMONY OF**

Bradley T. Cebulko

**STAFF OF
WASHINGTON UTILITIES AND
TRANSPORTATION COMMISSION**

IEEE and Regional Benchmarks

July 22, 2014

Exhibit No. ___ (BTC-2)
Avista General Rate Case - Docket UE-140188
IEEE and Regional Benchmark Comparisons

IEEE SAIDI	Avista	PAC WA	PGE	Rocky ID	PSE	IEEE Q1	IEEE Median	IEEE Q3
2004	126	87	85	232	115	78	116	163
2005	108	110	86	341	124	98	145	192
2006	143	120	117	207	163	105	146	198
2007	132	122	77	216	143	109	144	200
2008	159	127	75	193	155	103	155	196
2009	193	161	115	224	145	81	116	167
2010	146	107	77	244	124	89	128	158
2011	118	80	66	173	144	106	143	171
2012	138	100	72	167	120	93	126	163
2013	138	113	62	74	125			

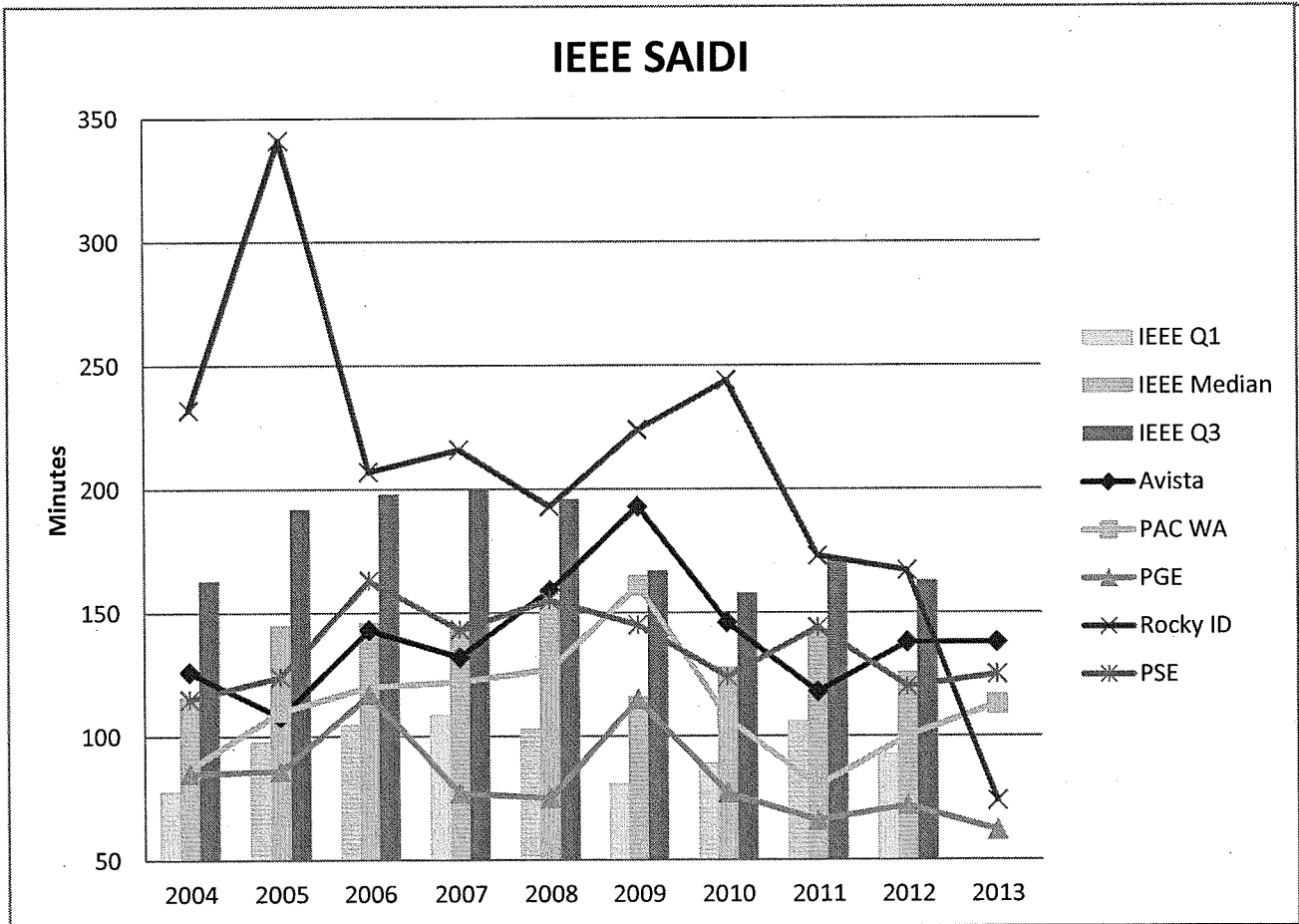


Exhibit No. ___ (BTC-2)
Avista General Rate Case - Docket UE-140188
IEEE and Regional Benchmark Comparisons

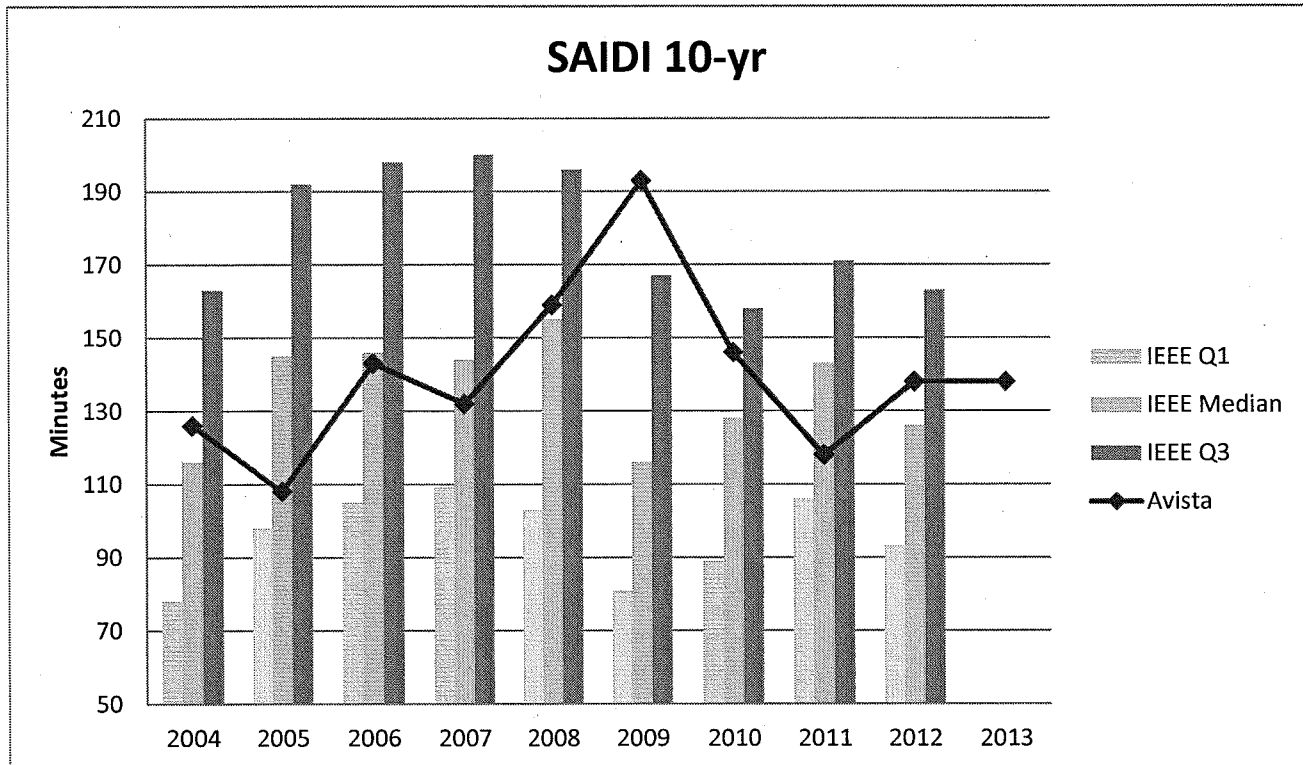
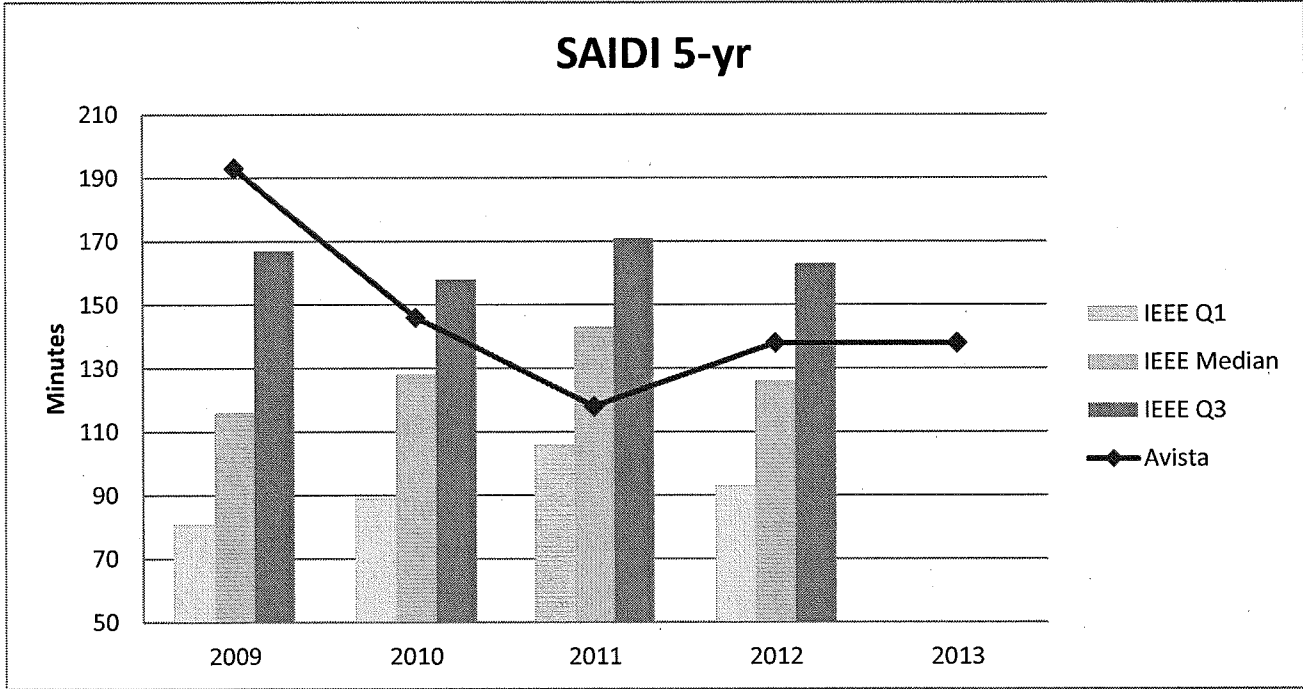


Exhibit No. ___ (BTC-2)
Avista General Rate Case - Docket UE-140188
IEEE and Regional Benchmark Comparisons

IEEE SAIFI	Avista	Pac WA	PGE	Rocky ID	PSE	IEEE Q1	IEEE Median	IEEE Q3
2004	1.01	0.712	0.8	2.5	0.77	0.9	1.22	1.55
2005	0.97	0.81	0.83	3.1	0.93	1.09	1.39	1.63
2006	1.29	0.98	1.06	2	1.05	1.11	1.36	1.7
2007	1.14	1.116	0.71	2.6	0.91	1.06	1.33	1.71
2008	1.4	1.323	0.73	1.8	0.98	1.06	1.34	1.6
2009	1.52	1.042	0.81	2.1	0.94	0.89	1.12	1.49
2010	1.23	0.862	0.65	2.3	0.87	0.92	1.17	1.46
2011	1.08	0.549	0.51	1.5	1.02	0.96	1.16	1.55
2012	1.14	0.664	0.55	1.5	0.83	0.89	1.08	1.39
2013	1.05	0.791	0.45	0.7	0.86			

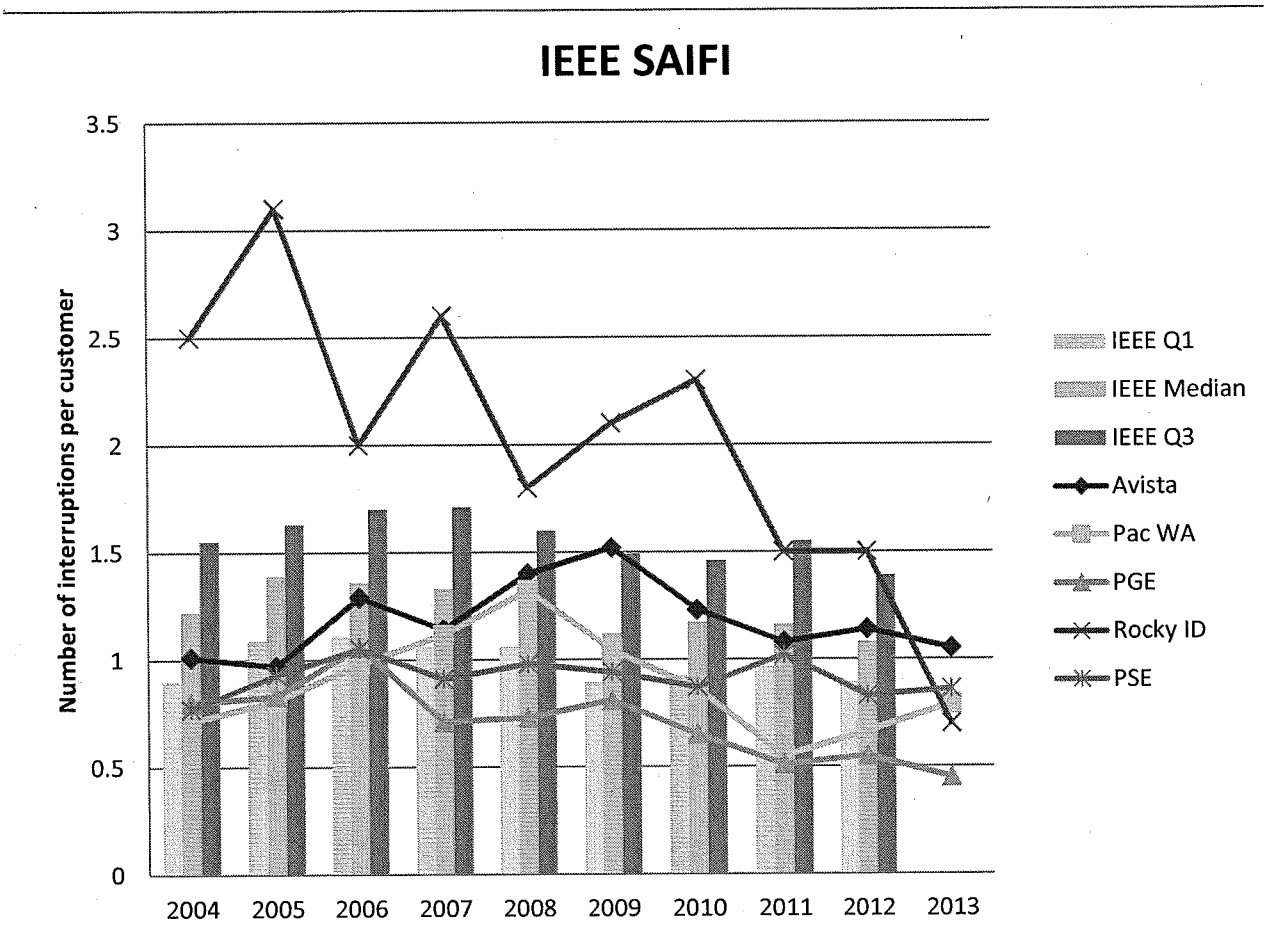


Exhibit No. ___ (BTC-2)
 Avista General Rate Case - Docket UE-140188
 IEEE and Regional Benchmark Comparisons

