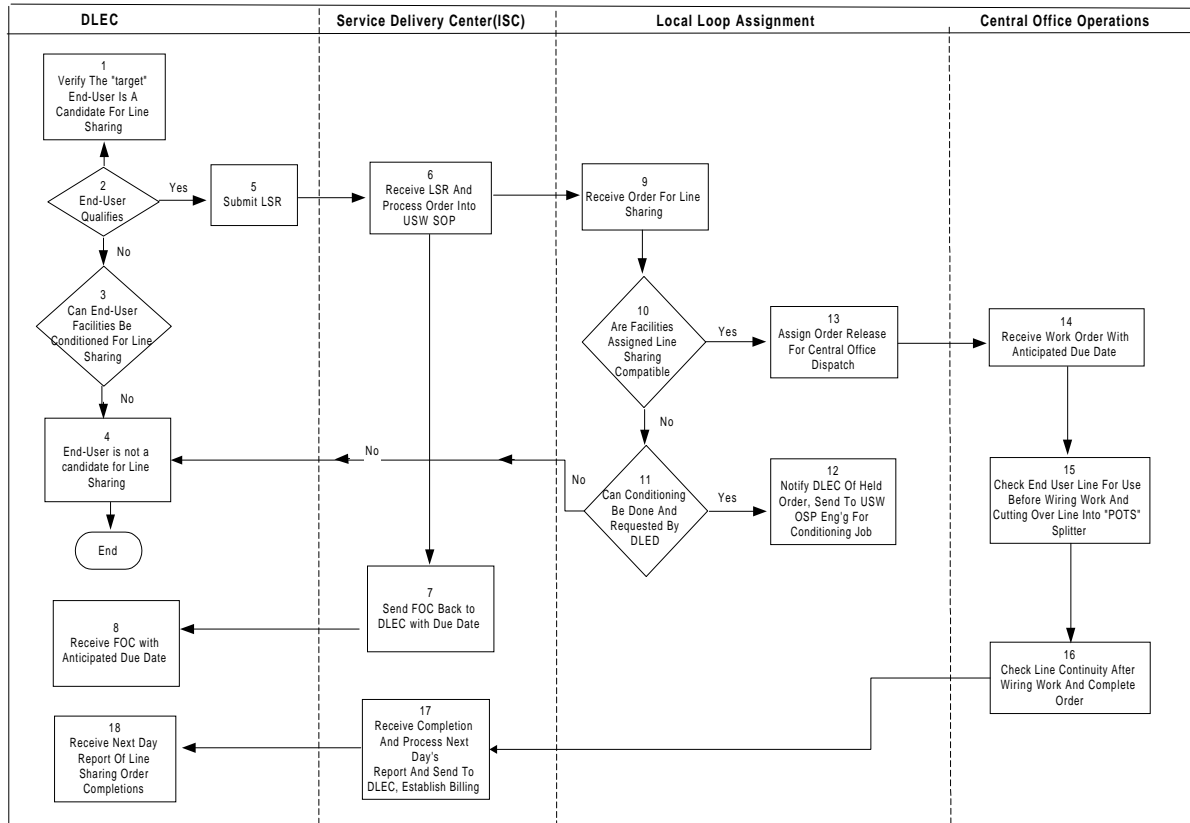


Line Sharing/Shared Loop Provisioning Flow



Line Sharing/Shared Loop Provisioning Task List

Assoc. Task #	Process
1	CLEC will verify Line Sharing candidates by accessing Loop Qualification tool available through IMA
2	CLEC determines from the IMA loop Qualification tool whether the end user's local loop is ADSL-qualified.
3	The ability to request conditioning will be available at a later date..
4	If the local loop is not ADSL-qualified the line is not a candidate for line sharing.
5	When the loop is a candidate for line sharing the CLEC will submit an LSR to the ISC via IMA or FAX.
6	The ISC will received and review the LSR for completeness and accuracy before issuing an order into the service order processor. The Service Order Assistant will query ADSL Loop Qual tool upon receipt of the LSR, if the query fails the LSR will be rejected back to the CLEC. Two orders are issued. A "C" order will be issued on the exissting simple Business/Residential customer line to add new FIDs indicating line sharing. A "N" order will be issued on th eCLEC account the bill the line sharing recurring and non recurring charges.
7	Service Order Assistant sends firm order confirmation to the DLEC with the established due date for line sharing.
8	CLEC receives the firm order confirmation.
9	LFACS receives non designed order for line sharing.
10	Check is made between the equipment information on the order and the line information of the exisiting service. Can not have load coil or bridge tap.
11	If load coil or bridge tap exists and DLEC can not yet request conditioning the line is not a candidate for line sharing. The DLEC is notified to cancel order
12	If DLEC can request conditioning the USW OSP Engineering Group is notified to do conditioning.
13	SWITCH assignments are made on the equipment iformation passed on the service order. The LFACS assignments are reused. Central Office dispatched arranged.
14	FOMS report is generated as wiring tool for the CO personnel. .
15	CO technician cuts line into "POTS" Splitter. There will be some end user downtime around the wiring to the "POTS" splitter. The DLEC must make their customer aware of downtime.
16	MLT is used to test circuit for continuity. The "POTS" splitter will not interfere with testing. No additional xDSL testing on the cable pairs or testing back to the DLEC DSLAM equipment is available. Complete work in WFA/DI and/or WFA/DO.
17	Service Order Assistant notifies DLEC of the completion of the line sharing order. Billing to the CLEC is established in CRIS.
18	DLEC receives completion notification.