

# Equity Market Risk Premium - Research Summary

31 December 2019



© 2020 KPMG Advisory N.V., registered with the trade register in the Netherlands under number 33263682, is a member firm of the KPMG network of independent member firms affiliated with KPMG International Cooperative ('KPMG International'), a Swiss entity. All rights reserved. The KPMG name and logo are registered trademarks of KPMG International.

# We recommend a MRP of 6.0% as per 31 December 2019

If you are reading this, it is likely that you are in regular contact with KPMG on the topic of valuations. The goal of this document is to provide a summary to our business partners about our recent observations and conclusions regarding one of the key valuation parameters, the equity market risk premium.

**We recommend the use of an equity market risk premium (“MRP”) of 6.0% as at 31 December 2019. Compared to the third quarter of 2019 we observe an increase in expected equity returns, which coupled with a slight increase in risk-free rates (for all markets), results in an increase of the MRP with 25 basis points.**

**The final quarter of 2019 was characterised by (further) increasing stock market prices, however, the growth outlooks experienced even greater increases, resulting in the overall higher expected equity returns.**

**Marcel Groenendijk**  
Partner

Phone: +31 20 656 7822  
Groenendijk.Marcel@kpmg.nl

**Herman Engelbrecht**  
Associate director

Phone: +31 20 656 4084  
Engelbrecht.Herman@kpmg.nl

**Alain Verburg**  
Associate

Phone: +31 20 656 8829  
Verburg.Alain@kpmg.nl

# Introduction - valuation and discount rates

## Introduction

The discount rate is an important input parameter to any valuation based on the discounted cash flow methodology ("DCF"). All else equal, a higher discount rate will lead to a lower asset value and vice versa.

In this document, we will specifically focus on the derivation of the cost of equity for company valuations. This discount rate can either be directly applied to equity cash flow forecasts of a company or it can be used in conjunction with the cost of debt and a certain financing structure to derive the weighted average cost of capital ("WACC").



## Discount rate derivation

While there are several ways to derive discount rates, the most commonly applied methodology is the 'build-up methodology' based on the Capital Asset Pricing Model ("CAPM"). This methodology builds up the discount rate by summation of several asset-related risk components in order to derive a return at which investors are willing to invest in this asset (e.g. a company).

A general DCF model can be expressed by the following formula:

$$\text{Present value} = \frac{CF_1}{(1+k)^1} + \frac{CF_2}{(1+k)^2} + \frac{CF_3}{(1+k)^3} + \dots = \sum_{t=1}^{\infty} \frac{CF_t}{(1+k)^t}$$

Present value = value of the analysed asset (e.g. a company)  
CF<sub>t</sub> = cash flow that the asset will generate in period t  
k = asset-specific discount rate

The build-up of the cost of equity ("k") of a company can be expressed as:

$$k = rfr + \beta \times MRP + \alpha$$

k = required return on equity  
rfr = risk-free rate  
β = a company's systematic risk  
MRP = market or equity risk premium  
α = asset-specific risk factors

The function and derivation of the individual discount rate parameters are briefly discussed on the following slide.

# Introduction - discount rate parameters

## Risk-free rate

The risk-free rate forms the basis for any discount rate estimation using the build-up methodology. As the name implies, this rate should not take into account any risk factors and should only include two general components:

- The time value of money; and
- Inflation.

Since there are no investments that are truly risk-free, the risk-free rate is commonly approximated by reference to the yield on long-term debt instruments issued by presumably financially healthy governments (e.g. AAA-rated government bonds with a maturity of 30 years).

## Beta

Beta measures how the returns of a certain company behave in relation to the returns of the relevant market benchmark.

A beta greater/smaller than 1.0 means that the share price of a company is more/less volatile than the general market and therefore investors will require a higher/lower return to compensate for this volatility.

## Alpha

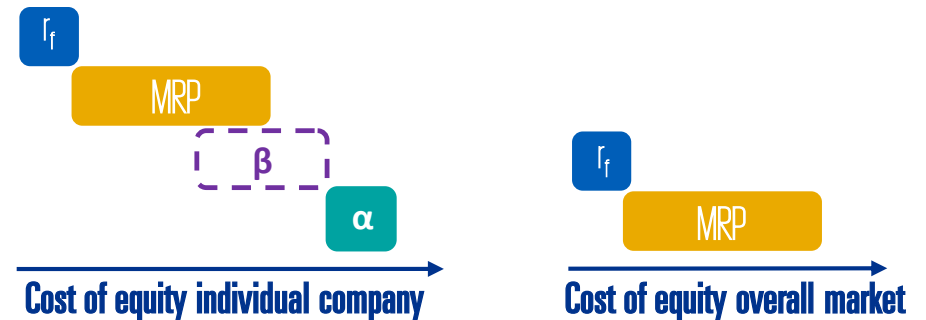
Alpha is an asset-specific adjustment factor that may need to be applied for a number of different reasons. If a financial forecast does not account for certain operational risks, it may be appropriate to include a forecast risk premium. Other examples of alpha adjustments are size premia and illiquidity premia.

## Equity market risk premium (MRP)

The equity market risk premium (“MRP”) is the average return that investors require over the risk-free rate for accepting the higher variability in returns that are common for equity investments (i.e. the MRP reflects a minimum threshold for investors in order to be willing to invest).

Since alpha only relates to company-specific adjustments, it can be omitted if considering the overall market (alpha = 0). Furthermore it is important to note that for the overall market, beta will by definition always be 1.0, since the sum of all returns of individual stocks equals the overall return of the market, and therefore, the two are perfectly correlated.

As the figure below shows, the required return for the overall market is defined entirely by the risk-free rate and the equity market risk premium.



# Measurement of the equity market risk premium - methodologies

## Implied equity market risk premium

The general DCF formula discussed earlier can be used to solve for the implied discount rate that reconciles these parameters.

Deducting the risk-free rate from this implied discount rate will yield an implied equity market risk premium.

The implied equity market risk premium methodology is to some extent sensitive to input assumptions and careful consideration must be given to:

- The selection of income proxies (e.g. dividends, buy-backs, cash flow);
- The basis of expected growth rates (e.g. macroeconomic considerations, analyst forecasts); and
- The trade-off between outcome stability and current relevance with regards to certain historical inputs (e.g. dividend yield normalisations, pay-out ratios).

KPMG Corporate Finance, a division of KPMG Advisory N.V. (“KPMG Corporate Finance”), continuously inspects if enhancements in applying the above input assumptions are necessary for the current MRP method in order to accurately reflect the current market dynamics.

We deem the implied equity market risk premium methodology the most appropriate methodology in order to derive changes in the equity market risk premium as a result of the financial crisis, because it incorporates recent market developments, expectations, and it can be logically deduced from observable market data.

## Historical observation methodology

This methodology assumes that the expected equity market risk premium can be derived by studying historical equity returns.

While this methodology is well established and theoretically sound, it does not allow for the incorporation of the most recent market developments.

## Other methodologies

There are a number of other prominent methodologies which may lead to additional insights, the most common being:

- The multi-factor model;
- The yield spread build-up; and
- The survey approach.

While each of these methodologies offers some unique advantages, the application of these methodologies involves similar trade-offs as the ones between the historical and the implied equity market risk premium methodology.

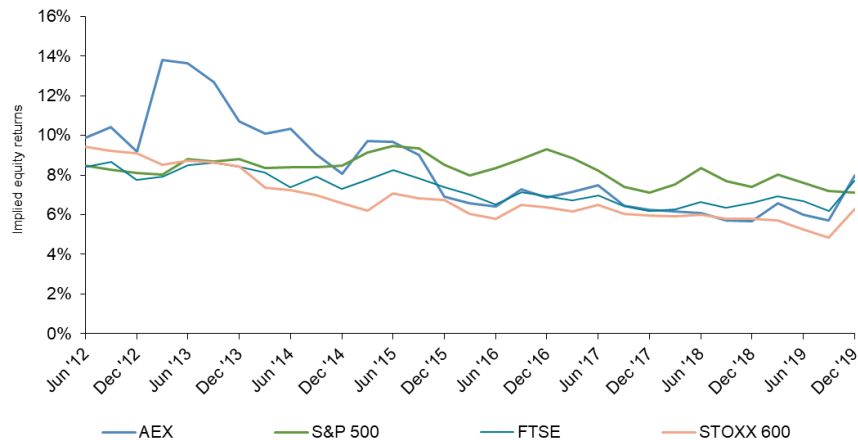


# Development of discount rates

## Implied equity return

The graph below illustrates the movement in the implied equity returns for a number of major equity markets over time. The decrease in implied equity returns for all markets in the second and third quarter of 2019 did not continue and all markets (except the S&P 500) show a sharp increase as at 31 December 2019.

In our previous reports we provided additional attention to the growth expectations of the European markets. We indicated that these were below the 2014 – 2018 average levels. In the third quarter of 2019 we noticed another decrease for both the US and the European markets, but the last quarter of 2019 showed higher expected growth rates again (especially for the European markets). Growth expectations of the European markets seem to be back to historical average levels.



## Yield on long-term bonds

In the graph below, the interest rate movements for a number of highly developed markets (Netherlands, UK, Germany and US) are displayed.

After a year of continuously decreasing risk-free rates the last quarter of 2019 showed an increase again for all government bond yields. However, the risk-free rates continue to be significantly lower than historical levels.

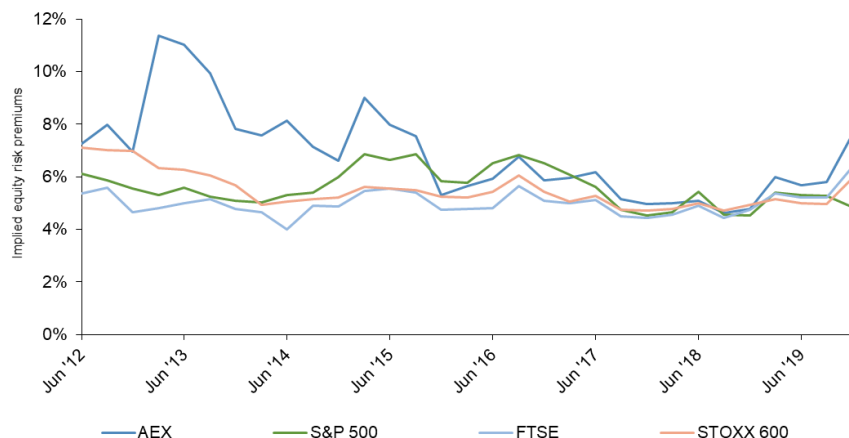


# Equity market risk premium as per 31 December 2019: 6.0%

## Findings

Since markets fluctuate on a daily basis and there are some differences between market risk premia in different regions, it is difficult to mathematically derive one single point estimate for a universal equity market risk premium for all developed markets.

In our current update we observe a higher equity risk premium compared to the previous quarter. This is driven by strong increasing implied equity returns and minor increasing risk-free rates.



## Equity market risk premium KPMG Corporate Finance

Based on the analyses set out in this report we conclude that the markets included in our study (with more weight given to the S&P 500, FTSE and STOXX 600), show higher implied premiums compared to last quarter. Therefore, KPMG Corporate Finance recommends the use of an **equity market risk premium of 6.0%** as per 31 December 2019.

We note that our estimation is based on information available as at 31 December 2019. Developments in the market after 31 December 2019 may have an impact on the perceived market risk which is not reflected in the equity market risk premium estimate as at 31 December 2019.

## Considerations

In order to assess the reasonableness of the outcomes of our implied equity market risk premium study, we have considered various other methodologies as previously described. To the extent that these methodologies are valid to derive insights about the current level of the equity market risk premium, these methodologies have confirmed our findings.

Based on our research and professional judgement we propose a global equity market risk premium. However, when calculating a discount rate consideration must be given to (amongst others):

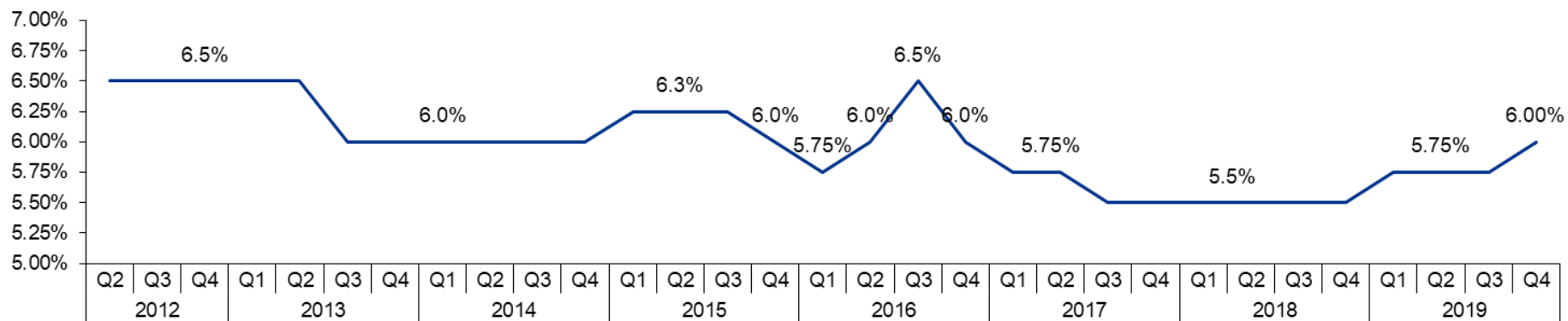
- The basis for the applied risk-free rate;
- The applicable country risk premium; and
- Expected differences in inflationary outlook.

We highlight that individual input parameters should never be viewed in isolation.

# Appendix

## Historic MRP estimates

Please find an overview of the historic MRP estimates by KPMG Corporate Finance in the graph below.







**KPMG on social media**



**KPMG app**

No one should act upon the information included in this presentation without appropriate professional advice after a thorough examination of the particular situation. KPMG Corporate Finance accepts no responsibility or liability to any party in connection with the information or views in this presentation.

© 2020 KPMG Advisory N.V., registered with the trade register in the Netherlands under number 33263682, is a member firm of the KPMG network of independent member firms affiliated with KPMG International Cooperative ('KPMG International'), a Swiss entity.

The KPMG name and logo are registered trademarks of KPMG International.