

BEFORE THE
WASHINGTON UTILITIES AND TRANSPORTATION COMMISSION

WASHINGTON UTILITIES AND)
TRANSPORTATION COMMISSION,)
Complainant,) DOCKET NOS. UE-140188 and
v.) UG-140189 (*Consolidated*)
AVISTA CORPORATION, DBA)
AVISTA UTILITIES,)
Respondent.)
_____)

EXHIBIT NO.____(RRS-3)

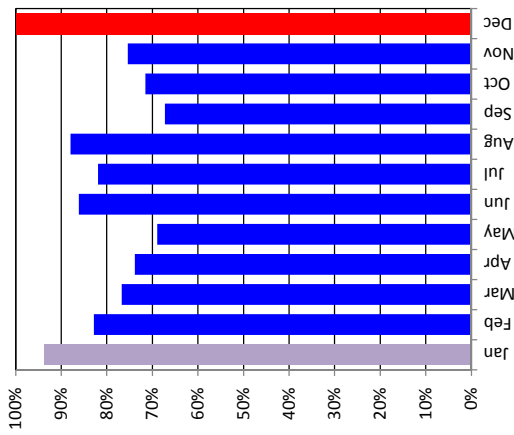
**MONTHLY PEAK DEMANDS AS A PERCENT
OF THE ANNUAL SYSTEM PEAK**

JULY 22, 2014

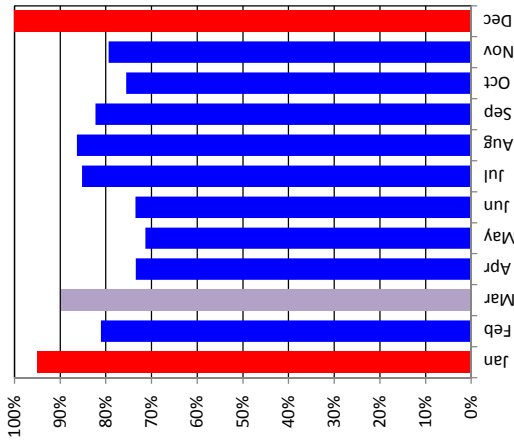
AVISTA CORPORATION

Monthly Peak Demands as a Percent of the Annual System Peak

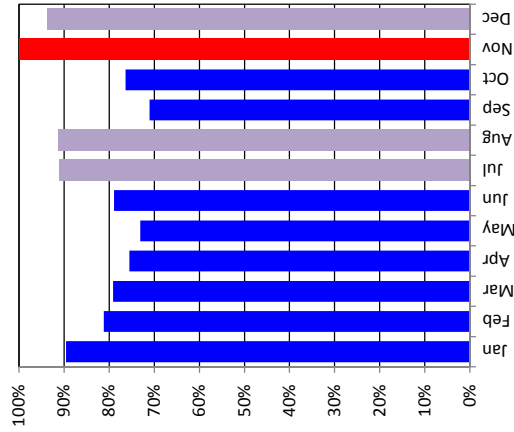
Calendar Year 2008



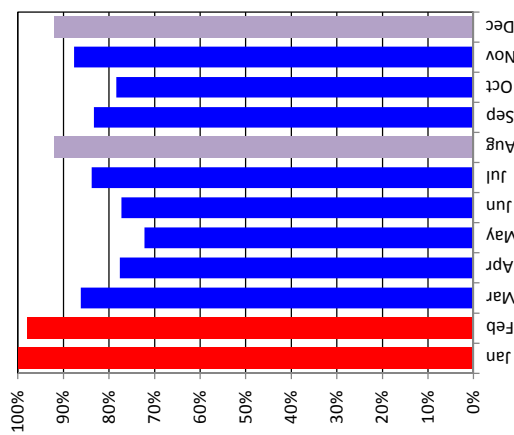
Calendar Year 2009



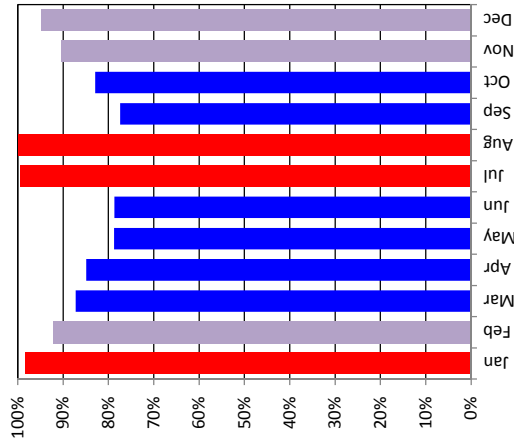
Calendar Year 2010



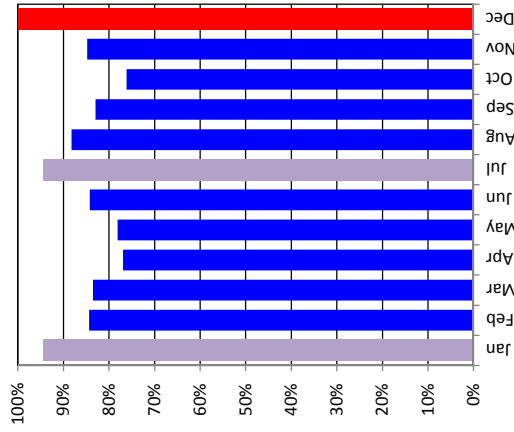
Calendar Year 2011



Calendar Year 2012



Calendar Year 2013



█ Monthly Peaks are Greater than 95%
█ Monthly Peaks are 90% to 95%