

**BEFORE THE WASHINGTON UTILITIES AND TRANSPORTATION COMMISSION**

WASHINGTON UTILITIES AND )  
TRANSPORTATION COMMISSION, )  
Complainant, ) Docket No. UE-110876  
v. ) Docket No. UG-110877  
AVISTA CORPORATION d/b/a ) Docket No. UE-120436  
AVISTA UTILITIES, ) Docket No. UG-120437  
Respondent. ) (*consolidated*)  
\_\_\_\_\_ )  
)

**EXHIBIT NO. \_\_ (MPG-15)**

**BOND YIELD SPREADS**

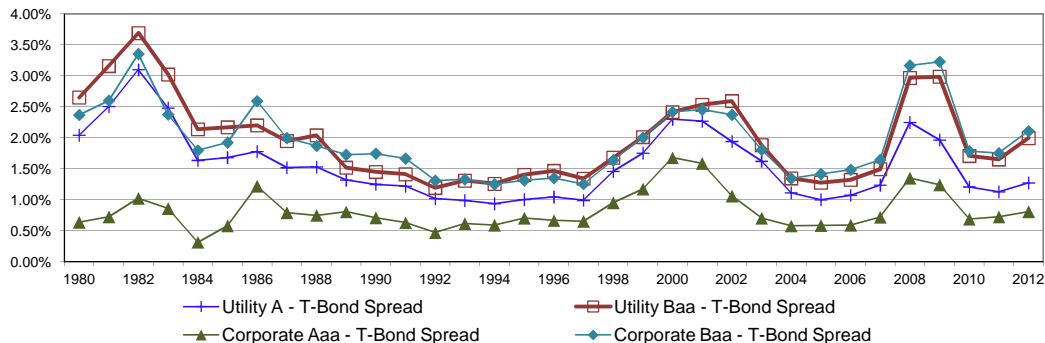
**September 19, 2012**

# Avista Corporation

## Bond Yield Spreads

Line	Year	T-Bond Yield <sup>1</sup> (1)	Public Utility Bond				Corporate Bond				Utility to Corp. Baa Spread <sup>10</sup>
			A <sup>2</sup> (2)	Baa <sup>2</sup> (3)	A-T-Bond Spread <sup>4</sup>	Baa-T-Bond Spread <sup>5</sup>	Aaa <sup>1</sup> (6)	Baa <sup>1</sup> (7)	Aaa-T-Bond Spread <sup>8</sup>	Baa-T-Bond Spread <sup>9</sup>	
1	1980	11.30%	13.34%	13.95%	2.04%	2.65%	11.94%	13.67%	0.64%	2.37%	0.28%
2	1981	13.44%	15.95%	16.60%	2.51%	3.16%	14.17%	16.04%	0.73%	2.60%	0.56%
3	1982	12.76%	15.86%	16.45%	3.10%	3.69%	13.79%	16.11%	1.03%	3.35%	0.34%
4	1983	11.18%	13.66%	14.20%	2.48%	3.02%	12.04%	13.55%	0.86%	2.38%	0.65%
5	1984	12.39%	14.03%	14.53%	1.64%	2.14%	12.71%	14.19%	0.32%	1.80%	0.34%
6	1985	10.79%	12.47%	12.96%	1.68%	2.17%	11.37%	12.72%	0.58%	1.93%	0.24%
7	1986	7.80%	9.58%	10.00%	1.78%	2.20%	9.02%	10.39%	1.22%	2.59%	-0.39%
8	1987	8.58%	10.10%	10.53%	1.52%	1.95%	9.38%	10.58%	0.80%	2.00%	-0.05%
9	1988	8.96%	10.49%	11.00%	1.53%	2.04%	9.71%	10.83%	0.75%	1.87%	0.17%
10	1989	8.45%	9.77%	9.97%	1.32%	1.52%	9.26%	10.18%	0.81%	1.73%	-0.21%
11	1990	8.61%	9.86%	10.06%	1.25%	1.45%	9.32%	10.36%	0.71%	1.75%	-0.29%
12	1991	8.14%	9.36%	9.55%	1.22%	1.41%	8.77%	9.80%	0.63%	1.67%	-0.25%
13	1992	7.67%	8.69%	8.86%	1.02%	1.19%	8.14%	8.98%	0.47%	1.31%	-0.12%
14	1993	6.60%	7.59%	7.91%	0.99%	1.31%	7.22%	7.93%	0.62%	1.33%	-0.02%
15	1994	7.37%	8.31%	8.63%	0.94%	1.26%	7.96%	8.62%	0.59%	1.25%	0.01%
16	1995	6.88%	7.89%	8.29%	1.01%	1.41%	7.59%	8.20%	0.71%	1.32%	0.09%
17	1996	6.70%	7.75%	8.17%	1.05%	1.47%	7.37%	8.05%	0.67%	1.35%	0.12%
18	1997	6.61%	7.60%	7.95%	0.99%	1.34%	7.26%	7.86%	0.66%	1.26%	0.09%
19	1998	5.58%	7.04%	7.26%	1.46%	1.68%	6.53%	7.22%	0.95%	1.64%	0.04%
20	1999	5.87%	7.62%	7.88%	1.75%	2.01%	7.04%	7.87%	1.18%	2.01%	0.01%
21	2000	5.94%	8.24%	8.36%	2.30%	2.42%	7.62%	8.36%	1.68%	2.42%	-0.01%
22	2001	5.49%	7.76%	8.03%	2.27%	2.54%	7.08%	7.95%	1.59%	2.45%	0.08%
23	2002	5.43%	7.37%	8.02%	1.94%	2.59%	6.49%	7.80%	1.06%	2.37%	0.22%
24	2003	4.96%	6.58%	6.84%	1.62%	1.89%	5.67%	6.77%	0.71%	1.81%	0.08%
25	2004	5.05%	6.16%	6.40%	1.11%	1.35%	5.63%	6.39%	0.58%	1.35%	0.00%
26	2005	4.65%	5.65%	5.93%	1.00%	1.28%	5.24%	6.06%	0.59%	1.42%	-0.14%
27	2006	4.99%	6.07%	6.32%	1.08%	1.32%	5.59%	6.48%	0.60%	1.49%	-0.16%
28	2007	4.83%	6.07%	6.33%	1.24%	1.50%	5.56%	6.48%	0.72%	1.65%	-0.15%
29	2008	4.28%	6.53%	7.25%	2.25%	2.97%	5.63%	7.45%	1.35%	3.17%	-0.20%
30	2009	4.07%	6.04%	7.06%	1.97%	2.99%	5.31%	7.30%	1.24%	3.23%	-0.24%
31	2010	4.25%	5.46%	5.96%	1.21%	1.71%	4.94%	6.04%	0.69%	1.79%	-0.08%
32	2011	3.91%	5.04%	5.56%	1.13%	1.65%	4.64%	5.66%	0.73%	1.75%	-0.10%
32	2012 <sup>3</sup>	3.04%	4.31%	5.04%	1.27%	2.00%	3.85%	5.15%	0.81%	2.11%	-0.11%
33	<b>Average</b>	<b>7.17%</b>	<b>8.73%</b>	<b>9.15%</b>	<b>1.57%</b>	<b>1.98%</b>	<b>8.00%</b>	<b>9.12%</b>	<b>0.83%</b>	<b>1.95%</b>	<b>0.02%</b>

**Yield Spreads**  
Treasury Vs. Corporate & Treasury Vs. Utility



Sources:

- <sup>1</sup> St. Louis Federal Reserve: Economic Research, <http://research.stlouisfed.org/>.
- <sup>2</sup> Mergent Public Utility Manual, Mergent Weekly News Reports, 2003. The utility yields for the period 2001-2009 were obtained from the Mergent Bond Record. The utility yields from 2010-2011 were obtained from <http://credittrends.moodys.com/>.
- <sup>3</sup> 2012 data is through June 30, 2012.