

**EXHIBIT NO. ___(JvdH-5)
DOCKETS UE-151871/UG-151872
PSE EQUIPMENT LEASING SERVICE
WITNESS: JOHN VAN DEN HEUVEL**

**BEFORE THE
WASHINGTON UTILITIES AND TRANSPORTATION COMMISSION**

**WASHINGTON UTILITIES AND
TRANSPORTATION COMMISSION,**

Complainant,

v.

PUGET SOUND ENERGY,

Respondent.

**Dockets UE-151871
UG-151872**

**FOURTH EXHIBIT TO THE DIRECT TESTIMONY
OF JOHN VAN DEN HEUVEL
Mitsubishi Priceshets BLANK_05.11.16 (1-41 pages)
ON BEHALF OF SMACNA-WW**

June 7, 2016



MAKE COMFORT *Personal*[™]

M SERIES — Single Zone Heating

FH — High Efficiency Wall Mounted Heat Pump

Hyper Heat

Product No	Unit Type	BTUs	SEER	HSPF	Rated	Max Capacity			Fuse Size	Line Size
						47°	17°	5°		
MSZFH06NA	Indoor	6K	33.1	13.5	8.7	14.0	10.7	8.7	15	1/4 x 3/8
MUZFH06NA	OUTDOOR	6K	33.1	13.5	6.0	14.0	10.7	8.7	15	1/4 x 3/8
MSZFH09NA	Indoor	9K	30.5	13.5	10.9	18.0	12.2	10.9	15	1/4 x 3/8
MUZFH09NA	OUTDOOR	9K	30.5	13.5	9.0	18.0	12.2	10.9	15	1/4 x 3/8
MSZFH12NA	Indoor	12K	26.1	12.5	13.6	21.0	13.6	13.6	15	1/4 x 3/8
MUZFH12NA	OUTDOOR	12K	26.1	12.5	12.0	21.0	13.6	13.6	15	1/4 x 3/8
MSZFH15NA	Indoor	15K	22.0	12.0	18.0	24.0	18.0	18.0	20	1/4 x 1/2
MUZFH15NA	OUTDOOR	15K	22.0	12.0	15.0	24.0	18.0	18.0	20	1/4 x 1/2
MSZFH18NA2	Indoor	18K	21.0	12.0	20.3	30.0	20.3	20.3	20	1/4 X 1/2
MUZFH18NA2	OUTDOOR	18K	21.0	12.0	17.2	30.0	20.3	20.3	20	1/4 X 1/2



GL — Wall Mounted Heat Pumps

Product No	Unit Type	BTUs	SEER	HSPF	47°	Max Capacity			Fuse Size	Line Size
						17°	5°			
MSZGL09NAU1	Indoor	9K	24.6	12.8	14.1	9.4	7.6		15	1/4 x 3/8
MUZGL09NAU8	OUTDOOR	9K	24.6	12.8	14.1	9.4	7.6		15	1/4 x 3/8
MSZGL12NAU1	Indoor	12K	23.1	12.5	18.1	12.0	9.7		15	1/4 x 3/8
MUZGL12NAU1	OUTDOOR	12K	23.1	12.5	18.1	12.0	9.7		15	1/4 x 3/8
MSZGL15NAU1	Indoor	14K	21.6	11.7	20.9	16.4	13.7		15	1/4 x 1/2
MUZGL15NAU1	OUTDOOR	14K	21.6	11.7	20.0	16.4	13.7		15	1/4 x 1/2
MSZGL18NAU1	Indoor	18K	20.5	11.2	25.0	18.2	14.5		15	1/4 x 1/2
MUZGL18NAU1	OUTDOOR	18K	20.5	11.2	25.0	18.2	14.5		15	1/4 x 1/2
MSZGL24NAU1	Indoor	22.4K	20.5	10.0	36.9	24.6	21.1		20	1/4 x 1/2
MUZGL24NAU1	OUTDOOR	22.4K	20.5	10.0	36.9	24.6	21.1		20	1/4 x 1/2



A = (Active) Stock at Customer's Branch
 NB = (Non-Branch) Non-Stock at Customer's Branch
 Blank = Non-Stock





MAKE COMFORT *Personal*[™]

M SERIES — Single Zone Heating

GE — Wall Mounted Heat Pumps

Product No	Unit Type	BTUs	SEER	HSPF	Max Capacity			Fuse Size	Line Size
					47°	17°	5°		
MSZGE09NA-9	Indoor	9K	23.2	11.0	14.1	8.7	7.1	15	1/4 x 3/8
MUZGE09NA2	OUTDOOR	9K	23.2	11.0	14.1	8.7	7.1	15	1/4 x 3/8
MSZGE12NA-9	Indoor	12K	22.7	11.4	18.1	11.2	9.2	15	1/4 x 3/8
MUZGE12NA2	OUTDOOR	12K	22.7	11.4	18.1	11.2	9.2	15	1/4 x 3/8
MSZGE15NA-9	Indoor	14K	21.6	11.2	20.9	15.9	13.0	15	1/4 x 1/2
MUZGE15NA2	OUTDOOR	14K	21.6	11.2	20.9	15.9	13.0	15	1/4 x 1/2
MSZGE18NA-9	Indoor	18K	19.2	10.0	24.2	17.2	13.6	15	1/4 x 1/2
MUZGE18NA-1	OUTDOOR	18K	19.2	10.0	25.2	17.2	13.6	15	1/4 x 1/2
MSZGE24NA	Indoor	24K	19.0	10.0	36.9	24.6	21.2	20	3/8 x 5/8
MUZGE24NA	OUTDOOR	24K	19.0	10.0	36.9	24.6	21.2	20	3/8 x 5/8
MSZD30NA-8	Indoor	30K	14.5	8.2	34.0	20.8	16.3	25	3/8 x 5/8
MUZD30NA-1	OUTDOOR	30K	14.5	8.2	34.0	20.8	16.3	25	3/8 x 5/8
MSZD36NA-8	Indoor	34K	15.1	8.2	36.0	22.8	19.1	25	3/8 x 5/8
MUZD36NA-1	OUTDOOR	34K	15.1	8.2	36.0	22.8	19.1	25	3/8 x 5/8



SEZ — Horizontal Ducted Heat Pumps

Need to Add MHK1 - Sold Separately

Product No	Unit Type	BTUs	SEER	HSPF	Max Capacity		Fuse Size	Line Size
					47°	17°		
SEZKD09NA4R1	Indoor	9K	15.0	10.0	14.1	6.7	15	1/4 x 3/8
SUZKA09NA	OUTDOOR	9K	15.0	10.0	14.1	6.7	15	1/4 x 3/8
SEZKD12NA4R1	Indoor	12K	16.0	10.0	16.4	9.0	15	1/4 x 3/8
SUZKA12NA	OUTDOOR	12K	16.0	10.0	16.4	9.0	15	1/4 x 3/8
SEZKD15NA4R1	Indoor	15K	15.5	10.0	21.1	11.9	15	1/4 x 1/2
SUZKA15NA	OUTDOOR	15K	15.5	10.0	21.1	11.9	15	1/4 x 1/2
SEZKD18NA4R1	Indoor	18K	17.5	10.0	24.9	13.1	15	1/4 x 1/2
SUZKA18NA	OUTDOOR	18k	17.5	10.0	24.9	13.1	15	1/4 x 1/2



SLZ — Ceiling Recessed, Cassette Heat Pumps

Need to Add MHK1 - Sold Separately

Product No	Unit Type	BTUs	SEER	HSPF	Max Capacity		Fuse Size	Line Size
					47°	17°		
SLZKA09NAR1	Indoor	9K	15.0	9.6	14.1	6.2	15	1/4 x 3/8
SUZKA09NA	OUTDOOR	9K	15.0	9.6	14.1	6.2	15	1/4 x 3/8
SLZKA12NAR1	Indoor	12K	15.4	9.6	17.1	8.3	15	1/4 x 3/8
SUZKA12NA	OUTDOOR	12K	15.4	9.6	17.1	8.3	15	1/4 x 3/8
SLZKA15NAR1	Indoor	15K	16.0	9.6	22.2	12.0	15	1/4 x 1/2
SUZKA15NA	OUTDOOR	15K	16.0	9.6	22.2	12.0	15	1/4 x 1/2



A = (Active) Stock at Customer's Branch
 NB = (Non-Branch) Non-Stock at Customer's Branch
 Blank = Non-Stock





MAKE COMFORT *Personal*TM

M SERIES — Single Zone Heating

Grille for SLZ Ceiling Recessed Cassette

Product No	Description
SLP-15AAUW	Grille for SLZ (sold separately)



A = (Active) Stock at Customer's Branch
NB = (Non-Branch) Non-Stock at Customer's Branch
Blank = Non-Stock

GENSCO



MAKE COMFORT *Personal*TM

M SERIES — Single Zone Cooling

GL — (Cooling Only) Wall Mounted Air Conditioner

Product No	Unit Type	BTUs	SEER	Fuse Size	Line Size
MSYGL09NAU1	Indoor	9K	24.6	15	1/4 x 3/8
MUYGL09NAU1	OUTDOOR	9K	24.6	15	1/4 x 3/8
MSYGL12NAU1	Indoor	12K	23.1	15	1/4 x 3/8
MUYGL12NAU1	OUTDOOR	12K	23.1	15	1/4 x 3/8
MSYGL15NAU1	Indoor	14K	21.6	15	1/4 x 1/2
MUYGL15NAU1	OUTDOOR	14K	21.6	15	1/4 x 1/2
MSYGL18NAU1	Indoor	18K	20.5	15	1/4 x 1/2
MUYGL18NAU1	OUTDOOR	18K	20.5	15	1/4 x 1/2
MSYGL24NAU1	Indoor	22.5K	20.5	20	3/8 x 5/8
MUYGL24NAU1	OUTDOOR	22.5K	20.5	20	3/8 x 5/8



GE — (Cooling Only) Wall Mounted Air Conditioner

Product No	Unit Type	BTUs	SEER	Fuse Size	Line Size
MSYGE09NA-9	Indoor	9K	23.2	15	1/4 x 3/8
MUYGE09NA2	OUTDOOR	9K	23.2	15	1/4 x 3/8
MSYGE12NA-9	Indoor	12K	22.7	15	1/4 x 3/8
MUYGE12NA2	OUTDOOR	12K	22.7	15	1/4 x 3/8
MSYGE15NA-9	Indoor	15K	21.6	15	1/4 x 1/2
MUYGE15NA2	OUTDOOR	15K	21.6	15	1/4 x 1/2
MSYGE18NA-9	Indoor	18K	19.2	15	1/4 x 1/2
MUYGE18NA-1	OUTDOOR	18K	19.2	15	1/4 x 1/2
MSYGE24NA	Indoor	24K	19.0	20	3/8 x 5/8
MUYGE24NA	OUTDOOR	24K	19.0	20	3/8 x 5/8
MSYD30NA-8	Indoor	30K	16.0	25	3/8 x 5/8
MUYD30NA-1	OUTDOOR	30K	16.0	25	3/8 x 5/8
MSYD36NA-8	Indoor	36K	15.1	25	3/8 x 5/8
MUYD36NA-1	OUTDOOR	36K	15.1	25	3/8 x 5/8



A = (Active) Stock at Customer's Branch
 NB = (Non-Branch) Non-Stock at Customer's Branch
 Blank = Non-Stock





MAKE COMFORT *Personal*TM

M SERIES — Multi Zone

MXZ-C-HZ — Hyper Heat Multi Zone Outdoor Units

Hyper Heat

Product No	Indoor Unit Type	BTUs	SEER	HSPF	Max Capacity	
					17°	5°
MXZ2C20NAHZ	Non-ducted	20K	17.0	9.8	22	22
MXZ3C24NAHZ	Non-ducted	24K	19.0	10.0	25	25
MXZ3C30NAHZ	Non-ducted	30K	18.0	11.0	28.6	28.
MXZ4C36NAHZ	Non-ducted	36K	19.1	11.3	45	45
MXZ5C42NAHZ	Non-ducted	42K	19.0	11.0	48	48
MXZ8C48NAHZ	Non-ducted	48K	18.9	11.0	54	54



Branch Boxes

Required with MXZ4C36NAHZ, MXZ5C42NAHZ, MXZ8C48NAHZ & MXZ8C48NA

Product No	Connectable No. of Indoor Units	Liquid Line Size	Suction Line Size	Dimensions (H x W x D)
PAC-MKA30BC	3	1/4" x 3	3/8" x 3	12-5/8" x 16-11/16" x 15 7/8"
PAC-MKA50BC	5	1/4" x 5	3/8" x 4, 1/2" x 1	12-5/8" x 16-11/16" x 15-7/8"



MXZ — Multi Zone Outdoor Units

Product No	Indoor Unit Type	BTUs	SEER	HSPF	Max Capacity	
					47°	17°
MXZ2B20NA-1	Ducted	20k	15.5	8.5	25.5	12.5
MXZ2B20NA-1	Non-ducted	20k	18.0	8.9	25.5	12.5
MXZ3C24NA	Non-ducted	24k	20.0	9.8	30.6	19.6
MXZ3C24NA	Ducted	24k	16.0	9.2	30.6	19.6
MXZ3C30NA	Non-ducted	30k	19.0	10.6	36.0	21.0
MXZ3C30NA	Ducted	30k	16.2	10.6	36.0	21.0
MXZ4C36NA	Non-ducted	36k	19.2	11.0	43.0	26.6
MXZ4C36NA	Ducted	36k	16.0	9.8	43.0	26.6
MXZ5C42NA	Non-ducted	42K	19.7	10.3	53.6	24.4
MXZ5C42NA	Ducted	42k	15.2	9.1	53.6	24.4
MXZ8C48NA	Non-ducted	48K	18.9	11.4	54.0	36.6
MXZ8C48NA	Ducted	48k	14.7	10.1	54.0	36.6



A = (Active) Stock at Customer's Branch
 NB = (Non-Branch) Non-Stock at Customer's Branch
 Blank = Non-Stock





MAKE COMFORT *Personal*[™]

M SERIES — Multi Zone

MXZ-B — Multi Zone outdoor Units

Product No	Indoor Unit Type	BTUs	SEER	HSPF	Max Capacity		Zones
					47°	17°	
MXZ2B20NA-1	Non-ducted	20K	18.0	8.9	25.5	12.5	2
MXZ2B20NA-1	Ducted	20k	15.5	8.5	25.5	12.5	



MVZ Multi Position Air Handlers

Product No	Capacity (Btu/h)		Net Weight	Line Size	Dimensions (H x W x D)
	Heating	Cooling			
MVZA12AA4	13.5	12.0	113	1/4 X 1/2	51" x 17" x 22"
MVZA18AA4	20.0	18.0	113	1/4 X 1/2	51" x 17" x 22"
MVZA24AA4	27.0	24.0	113	3/8 X 5/8	51" x 17" x 22"
MVZA30AA4	34.0	30.0	141	3/8 X 5/8	55" x 21" x 22"
MVZA36AA4	40.0	36.0	141	3/8 X 5/8	55" x 21" x 22"



Electric Heat Kits * Requires Separate Power Supply

Product No	Description	Compatibility
EH03-MPA-S	3Kw Small	MVZA12AA4, MVZA18AA4, MVZA24AA4
EH05-MPA-S	5Kw Small	MVZA12AA4, MVZA18AA4, MVZA24AA4
EH08-MPA-S	8Kw Small	MVZA18AA4, MVZA24AA4
EH08-MPA-M	8Kw Medium	MVZA30AA4, MVZA36AA4, PVA-A30AA4
EH10-MPA-M	10Kw Medium	MVZA30AA4, MVZA36AA4, PVA-A30AA4
EH10-MPA-L	10Kw Large	PVA-A36AA4, PVA-A42AA4
EH15-MPAS-L	15Kw Large	PVA-A36AA4, PVA-A42AA4



A = (Active) Stock at Customer's Branch
 NB = (Non-Branch) Non-Stock at Customer's Branch
 Blank = Non-Stock





MAKE COMFORT *Personal*[™]

M SERIES — Multi Zone

MVZ Multi Position Air Handlers

Electric Heat Lockout Controller

Product No	Description
ETC-211000-MIT	Aux. Heat Lockout PVA/MVZ Strip Heat



A = (Active) Stock at Customer's Branch
 NB = (Non-Branch) Non-Stock at Customer's Branch
 Blank = Non-Stock

GENSCO



MAKE COMFORT *Personal*[™]

M SERIES — Multi Zone (Indoor Options)

FH — Wall Mounted Heads

Product No	BTUs	SEER	HSPF	Max Capacity			Fuse Size	Line Size	Dimensions (H x W x D)
				47°	17°	5°			
MSZFH06NA	6K	33.1	13.5	14.0	10.7	8.7	15	1/4 X 3/8	13" X 37" X 10"
MSZFH09NA	9K	30.5	13.5	18.0	12.2	10.9	15	1/4 X 3/8	13" X 37" X 10"
MSZFH12NA	12K	26.1	12.5	21.0	13.6	13.6	15	1/4 X 3/8	13" X 37" X 10"
MSZFH15NA	15K	22.0	12.0	24.0	18.0	18.0	20	1/4 X 1/2	13" X 37" X 10"
MSZFH18NA2	18K	21.0	12.0	30.0	20.3	20.3	20	1/4 X 1/2	13" X 37" X 10"



GL — Wall Mounted Heads

Product No	BTUs	SEER	HSPF	Max Capacity			Fuse Size	Line Size	Dimensions (H x W x D)
				47°	17°	5°			
MSZGL09NAU1	9K	24.6	12.8	14.1	9.4	7.6	15	1/4 x 3/8	12" x 32" x 10"
MSZGL12NAU1	12K	23.1	12.5	18.1	12.0	12.0	15	1/4 x 3/8	12" x 32" x 10"
MSZGL15NAU1	14K	21.6	11.7	20.9	16.4	16.4	15	1/4 x 1/2	12" x 32" x 10"
MSZGL18NAU1	18K	20.5	11.2	25.0	18.2	18.2	15	1/4 x 1/2	12" x 37" x 10"
MSZGL24NAU1	22.4K	20.5	10.0	36.9	24.6	24.6	20	1/4 x 1/2	13" x 44" x 10"



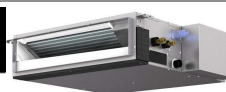
GE — Wall Mounted Heads

Product No	BTUs	SEER	HSPF	Max Capacity			Fuse Size	Line Size
				47°	17°	5°		
MSZGE06NA-9	6K	N/A	10.0				15	1/4 x 3/8
MSZGE09NA-9	9K	23.2	11.0	6.6	10.9	7.1	15	1/4 x 3/8
MSZGE12NA-9	12K	22.7	11.4	8.8	14.4	9.2	15	1/4 x 3/8
MSZGE15NA-9	15K	21.6	11.2	11.3	18.0	13.0	15	1/4 x 1/2
MSZGE18NA-9	18K	19.2	10.0	13.4	21.6	13.6	15	1/4 x 1/2
MSZGE24NA	24K	19.0	10.0	16.0	27.6	21.2	20	3/8 x 5/8



SEZ — Horizontal Ducted Units

Product No	BTUs	SEER	HSPF	Max Capacity		Fuse Size	Line Size
				47°	17°		
SEZKD09NA4R1	9k	15.0	10.0	14.1	6.7	15	1/4 x 3/8
SEZKD12NA4R1	12k	16.0	10.0	16.4	9.0	15	1/4 x 3/8
SEZKD15NA4R1	15k	15.5	10.0	21.1	11.9	15	1/4 x 1/2
SEZKD18NA4R1	18k	17.5	10.0	24.9	13.1	15	1/4 x 1/2



A = (Active) Stock at Customer's Branch
 NB = (Non-Branch) Non-Stock at Customer's Branch
 Blank = Non-Stock





MAKE COMFORT *Personal*[™]

M SERIES — Multi Zone (Indoor Options)

SLZ — Ceiling Recessed, Cassette Units

(Grille Sold Separately)

Product No	BTUs	SEER	HSPF	Max Capacity		Fuse Size	Line Size
				47°	17°		
SLZKA09NAR1	9K	15.0	9.6	10.9	6.2	15	1/4 x 3/8
SLZKA12NAR1	12K	15.4	9.6	13.6	8.3	15	1/4 x 3/8
SLZKA15NAR1	15K	16.0	9.6	18.0	10.2	15	1/4 x 1/2



Grille for SLZ Ceiling Recessed Cassette

Product No	Description
SLP-15AAUW	Grille for SLZ (sold separately)



MFZ — Floor Mounted Units

Comes with Wireless Handheld

Product No	BTUs	SEER	Max Capacity	Fuse Size	Line Size	Dimensions (H x W x D)
MFZKA09NA	9K	28.0	10.9	15	1/4 x 3/8	28" x 24" x 8"
MFZKA12NA	12K	28.0	14.4	15	1/4 x 3/8	28" x 24" x 8"
MFZKA18NA	18K	28.0	21.6	15	1/4 x 1/2	28" x 24" x 8"



A = (Active) Stock at Customer's Branch
 NB = (Non-Branch) Non-Stock at Customer's Branch
 Blank = Non-Stock

GENSCO



MAKE COMFORT *Personal*TM

P SERIES — Hyper Heat Single Zone

PKA — Wall Mounted HP

Hyper Heat

Product No	Unit Type	Cooling		Heating		HSPF/ SEER	Fuse Size	Liquid Line Size	Suction	
		BTUs	SEER	BTUs	HSPF				Line Size	Line Size MCA
PKAA30KA6	Indoor	30K	16.5	32K	9.5	8.9/15.5	30	3/8	5/8	25
PUZHA30NHA4	Outdoor	30K	16.5	32K	9.5	9.5/16.5	30	3/8	5/8	25
PKAA36KA6	Indoor	34.2K	16.2	37K	10.0	9.3/14.0	30	3/8	5/8	25
PUZHA36NHA4	Outdoor	33.4K	16.2	38K	10.0	10.0/16.2	30	3/8	5/8	25



PCA — Ceiling-Suspended HP

Hyper Heat

Product No	Unit Type	Cooling		Heating		HSPF/ SEER	Fuse Size	Liquid Line Size	Suction	
		BTUs	SEER	BTUs	HSPF				Line Size	Line Size MCA
PCAA30KA6	Indoor	24K	16.5	26K	9.5	10.9/16.8	30	3/8	5/8	18
PUZHA30NHA4	Outdoor	30K	16.5	32K	9.5	9.5/16.5	30	3/8	5/8	25
PCAA36KA6	Indoor	35K	16.2	37K	10.0	10.2/14.4	40	3/8	5/8	25
PUZHA36NHA4	Outdoor	33.4K	16.2	38K	10.0	10.0/16.2	30	3/8	5/8	25



PLA — Ceiling-Recessed HP

Hyper Heat (Grille Sold Separately)

Product No	Unit Type	Cooling		Heating		HSPF/ SEER	Fuse Size	Liquid Line Size	Suction	
		BTUs	SEER	BTUs	HSPF				Line Size	Line Size MCA
PLAA30BA6	Indoor	30K	15.6	32K	9.4	8.7/13.6	30	3/8	5/8	25
PUZHA30NHA4	Outdoor	30K	15.6	32K	9.4	9.5/16.5	30	3/8	5/8	25
PLAA36BA6	Indoor	35K	17.0	37K	10.0	9.3/14.2	30	3/8	5/8	25
PUZHA36NHA4	Outdoor	33.4K	17.0	38K	10.0	10.0/16.2	30	3/8	5/8	25



Grille for PLAA Ceiling-Recessed Unit

Product No	Description
PLP-40BAU	Grille for PLAA 12/18/24/30/36/42



A = (Active) Stock at Customer's Branch
 NB = (Non-Branch) Non-Stock at Customer's Branch
 Blank = Non-Stock





MAKE COMFORT *Personal*TM

P SERIES — Hyper Heat Single Zone

PEAD — Horizontal-Ducted HP

Hyper Heat

Product No	Unit Type	Cooling		Heating		HSPF/ SEER	Fuse Size	Liquid Line Size	Suction Line Size	MCA
		BTUs	SEER	BTUs	HSPF					
PEADA30AA5	Indoor	30K	15.5	32K	9.4	9.4/15.5	30	3/8	5/8	25
PUZHA30NHA4	Outdoor	30K	16.5	32K	9.5	9.5/16.5	30	3/8	5/8	25
PEADA36AA5	Indoor	35K	15.0	37K	9.8	9.8/15	30	3/8	5/8	25
PUZHA36NHA4	Outdoor	33.4K	16.2	38K	10.0	10.0/16.2	30	3/8	5/8	25



A = (Active) Stock at Customer's Branch
 NB = (Non-Branch) Non-Stock at Customer's Branch
 Blank = Non-Stock





MAKE COMFORT *Personal*TM

P SERIES — Single Zone

PKA — Wall Mounted AC & HP

Cooling-Only

Product No	Unit Type	BTUs	SEER	Fuse Size	Liquid Line Size	Suction Line Size	MCA
PKAA12HA6	Indoor	12K	15.2	15	1/4	1/2	13
PUYA12NHA6	Outdoor	12K	15.2	15	1/4	1/2	13
PKAA18HA6	Indoor	18K	15.3	15	1/4	1/2	13
PUYA18NHA6	Outdoor	18K	15.3	15	1/4	1/2	13
PKAA24KA6	Indoor	24K	17.0	25	3/8	5/8	18
PUYA24NHA6	Outdoor	24K	17.0	25	3/8	5/8	18
PKAA30KA6	Indoor	30K	15.5	30	3/8	5/8	25
PUYA30NHA6	Outdoor	30K	15.5	30	3/8	5/8	25
PKAA36KA6	Indoor	36K	14.0	30	3/8	5/8	25
PUYA36NHA6	Outdoor	36K	14.0	30	3/8	5/8	25



Heat Pump

Product No	Unit Type	Cooling BTUs	Heating BTUs	SEER	HSPF	HSPF/SEER	Fuse Size	Liquid Line Size	Suction Line Size	MCA
PKAA18HA6	Indoor	18K	19K	15.3	9.5	9.5/15.3	15	1/4	1/2	13
PUZA18NHA6	Outdoor	18k	19K	15.3	9.5	9.5/15.3	15	1/4	1/2	13
PKAA24KA6	Indoor	24K	26K	17.0	10.8	10.8/17	25	3/8	5/8	18
PUZA24NHA6	Outdoor	24K	26K	17.0	10.8	10.8/17	25	3/8	5/8	18
PKAA30KA6	Indoor	30K	32K	15.5	8.9	8.9/15.5	30	3/8	5/8	25
PUZA30NHA4	Outdoor	30K	32K	15.5	8.9	8.9/15.5	30	3/8	5/8	25
PKAA36KA6	Indoor	34.2K	37K	14.0	9.3	9.3/14.0	30	3/8	5/8	25
PUZA36NHA6	Outdoor	34.2K	37K	14.0	9.3	9.3/14.0	30	3/8	5/8	25



PCA — Ceiling-Suspended AC & HP

Cooling-Only

Product No	Unit Type	BTUs	SEER	Fuse Size	Liquid Line Size	Suction Line Size	MCA
PCAA24KA6	Indoor	24K	16.8	25	3/8	5/8	18
PUYA24NHA6	Outdoor	24K	16.8	25	3/8	5/8	18
PCAA36KA6	Indoor	36K	14.4	30	3/8	5/8	25
PUYA36NHA6	Outdoor	36K	14.4	30	3/8	5/8	25
PCAA42KA6	Indoor	42K	15.8	30	3/8	5/8	26
PUYA42NHA6	Outdoor	42K	15.8	30	3/8	5/8	26



A = (Active) Stock at Customer's Branch
 NB = (Non-Branch) Non-Stock at Customer's Branch
 Blank = Non-Stock





MAKE COMFORT *Personal*TM

P SERIES — Single Zone

PCA — Ceiling-Suspended AC & HP

Heat Pump

Product No	Unit Type	Cooling		Heating		HSPF/ SEER	Fuse Size	Liquid Line Size	Suction	
		BTUs	SEER	BTUs	HSPF				Line Size	Line Size MCA
PCAA24KA6	Indoor	24K	10.9	26K	16.8	10.9/16.8	30	3/8	5/8	18
PUZA24NHA6	Outdoor	24K	10.9	26K	16.8	10.9/16.8	30	3/8	5/8	18
PCAA30KA6	Indoor	24K	10.9	26K	16.8	10.9/16.8	30	3/8	5/8	30
PUZA30NHA6	Outdoor	24K	10.9	26K	16.8	10.9/16.8	30	3/8	5/8	30
PCAA36KA6	Indoor	35K	10.2	37K	14.4	10.2/14.4	40	3/8	5/8	40
PUZA36NHA6	Outdoor	35K	10.2	37K	14.4	10.2/14.4	40	3/8	5/8	40
PCAA42KA6	Indoor	42K	10.2	45K	15.8	10.2/15.8	40	3/8	5/8	40
PUZA42NHA6	Outdoor	42K	10.2	45K	15.8	10.2/15.8	40	3/8	5/8	40



PLA — Ceiling-Recessed AC & HP

Cooling-Only

Product No	Unit Type	BTUs	SEER	Fuse Size	Liquid Line Size	Suction	
						Line Size	MCA
PLAA12BA6	Indoor	12K	13.5	15	1/4	1/2	13
PUYA12NHA6	Outdoor	12K	13.5	15	1/4	1/2	13
PLAA18BA6	Indoor	18K	14.2	15	1/4	1/2	13
PUYA18NHA6	Outdoor	18K	14.2	15	1/4	1/2	13
PLAA24BA6	Indoor	24K	13.6	25	3/8	5/8	18
PUYA24NHA6	Outdoor	24K	13.6	25	3/8	5/8	18
PLAA30BA6	Indoor	30K	13.6	30	3/8	5/8	25
PUYA30NHA6	Outdoor	30K	13.6	30	3/8	5/8	25
PLAA36BA6	Indoor	35K	14.2	30	3/8	5/8	26
PUYA36NHA6	Outdoor	35K	14.2	30	3/8	5/8	26
PLAA42BA4	Indoor	42K	14.4	30	3/8	5/8	25
PUYA42NHA6	Outdoor	42K	14.4	30	3/8	5/8	25



A = (Active) Stock at Customer's Branch
 NB = (Non-Branch) Non-Stock at Customer's Branch
 Blank = Non-Stock





MAKE COMFORT *Personal*TM

P SERIES — Single Zone

PLA — Ceiling-Recessed AC & HP

Heat Pump

Product No	Unit Type	Cooling		Heating		Fuse Size	Liquid Line Size	Suction	
		BTUs	SEER	BTUs	HSPF			Line Size	MCA
PLAA18BA6	Indoor	18K	14.2	19K	9.8	15	1/4	1/2	13
PUZA18NHA6	Outdoor	18K	14.2	19K	9.8	15	1/4	1/2	13
PLAA24BA6	Indoor	24K	13.6	26K	8.5	25	3/8	5/8	18
PUZA24NHA6	Outdoor	24K	13.6	26K	8.5	25	3/8	5/8	18
PLAA30BA6	Indoor	30K	13.6	32k	8.7	30	3/8	5/8	25
PUZA30NHA6	Outdoor	30K	13.6	32K	8.7	30	3/8	5/8	25
PLAA36BA6	Indoor	35K	14.2	37K	9.3	30	3/8	5/8	25
PUZA36NHA6	Outdoor	35K	14.2	37K	9.3	30	3/8	5/8	25
PLAA42BA4	Indoor	42K	14.4	45K	9.3	30	3/8	5/8	26
PUZA42NHA6	Outdoor	42K	14.4	45K	9.3	30	3/8	5/8	26



Grille for PLAA Ceiling-Recessed Unit

Product No	Description
PLP-40BAU	Grille for PLAA 12/18/24/30/36/42



PEA/PEAD — Horizontal-Ducted AC & HP

Cooling-Only

Product No	Unit Type	BTUs	SEER	Fuse Size	Liquid Line Size	Suction	
						Line Size	MCA
PEAA12AA4R1	Indoor	12K	13.8	15	1/4	1/2	13
PUYA12NHA6	Outdoor	12K	13.8	15	1/4	1/2	13
PEAA18AA4R1	Indoor	18K	14.3	15	1/4	1/2	13
PUYA18NHA6	Outdoor	18K	14.3	15	1/4	1/2	13
PEADA24AA5	Indoor	24K	16	25	3/8	5/8	18
PUYA24NHA6	Outdoor	24K	16	25	3/8	5/8	18
PEADA30AA5	Indoor	30K	15.5	30	3/8	5/8	25
PUYA30NHA6	Outdoor	30K	15.5	30	3/8	5/8	25
PEADA36AA4	Indoor	36K	15	30	3/8	5/8	26
PUYA36NHA6	Outdoor	36K	15	30	3/8	5/8	26
PEADA42AA5	Indoor	42K	13.8	30	3/8	5/8	25
PUYA42NHA6	Outdoor	42K	13.8	30	3/8	5/8	25



A = (Active) Stock at Customer's Branch
 NB = (Non-Branch) Non-Stock at Customer's Branch
 Blank = Non-Stock





MAKE COMFORT *Personal*[™]

P SERIES — Single Zone

PEA/PEAD — Horizontal-Ducted AC & HP

Heat Pump

Product No	Unit Type	Capacity (Btu/h)		Net Weight	Line Size	Dimensions (H x W x D)
		Heating	Cooling			
PEAA18AA4R1	Indoor					
PUZA18NHA6	Outdoor					
PEADA24AA5	Indoor					
PUZA24NHA6	Outdoor					
PEADA30AA5	Indoor					
PUZA30NHA4	Outdoor					
PEADA36AA4	Indoor					
PUZA36NHA6	Outdoor					
PUZA42NHA6	Indoor					
PEADA42AA5	Outdoor					



A = (Active) Stock at Customer's Branch
 NB = (Non-Branch) Non-Stock at Customer's Branch
 Blank = Non-Stock

GENSCO



MAKE COMFORT *Personal*[™]

P SERIES — PVA Multi-Position Air Handlers

PVA Multi-Position Air Handlers

Product No	Unit Type	Capacity (Btu/h)		Net Weight	Line Size	Dimensions (H x W x D)
		Heating	Cooling			
PVAA30AA4	Indoor	34.0	30.0	141	3/8 x 5/8	54-1/4" x 21" x 21-5/8"
PUZHA30NHA4	Outdoor			265	3/8 x 5/8	53-1/8" x 37-3/8" x 1-3/16"
PVAA36AA4	Indoor	40.0	34.0	172	3/8 x 5/8	54-1/4" x 21" x 21-5/8"
PUZHA36NHA4	Outdoor			265	3/8 x 5/8	53-1/8" x 37-3/8" x 1-3/16"
PVAA42AA4	Indoor	54.0	42.0	172	3/8 x 5/8	59-1/2" x 25" x 21-5/8"
PUZHA42NKA	Outdoor			287	3/8 x 5/8	52-11/16" x 41-5/16" x 13+1-3/16"



Electric Heat Kits * Requires Separate Power Supply

Product No	Description	Compatibility
EH03-MPA-S	3Kw Small	MVZA12AA4, MVZA18AA4, MVZA24AA4
EH05-MPA-S	5Kw Small	MVZA12AA4, MVZA18AA4, MVZA24AA4
EH08-MPA-M	8Kw Medium	MVZA18AA4, MVZA24AA4
EH08-MPA-S	8Kw Small	MVZA30AA4, MVZA36AA4, PVA-A30AA4
EH10-MPA-L	10Kw Large	MVZA30AA4, MVZA36AA4, PVA-A30AA4
EH10-MPA-M	10Kw Medium	PVA-A36AA4, PVA-A42AA4
EH15-MPAS-L	15Kw Large	PVA-A36AA4, PVA-A42AA4



Electric Heat Lockout Controller

Product No	Description
ETC-211000-MIT	Aux. Heat Lockout PVA/MVZ Strip Heat



A = (Active) Stock at Customer's Branch
 NB = (Non-Branch) Non-Stock at Customer's Branch
 Blank = Non-Stock

GENSCO



MAKE COMFORT *Personal*TM

P SERIES — PVA Multi-Position Air Handlers

Wind Baffles

Product No	Net Weight	Description
WB-PA1	7 lbs. 7.9 oz.	Ivory, Polyester Powder Paint
WB-PA2	8 lbs. 4.4 oz.	Ivory, Acrylic Resin Coating



A = (Active) Stock at Customer's Branch
 NB = (Non-Branch) Non-Stock at Customer's Branch
 Blank = Non-Stock

GENSCO



MAKE COMFORT *Personal*[™]

Mitsubishi Ducted Air Handler / Heat Pump Systems

Installation Components Needed to Complete a Job

Product No	Description	PUZ/PVA30	PUZ/PVA36	PUZ/PVA42	MXZ-3C30NA / MVZ / GE06	MXZ-3C30NAHZ / MVZ / GE06
PUZ30	Outdoor Unit	X				
PUZ36	Outdoor Unit		X			
PUZ42	Outdoor Unit			X		
MXZ-3C30NA	Outdoor Unit				X	
MXZ-3C30NAHZ	Outdoor Unit					X
PVA30	Air Handler	X				
PVA36	Air Handler		X			
PVA42	Air Handler			X		
MVZ24	Air Handler				X	X
GE06	Indoor Wall Heat				X	X
MHK-1	Thermostat	X	X	X	X	X
MLS61020250B3B6	Lineset 3/8x5/8x25'	X	X	X	X	X
MLS40620250B3B6	Lineset 1/4x3/8x25'				X	X
MUEA04879	Port Adapter				X	X
MUEA05041	Port Adapter				X	X
DIVDDS30	30 AMP Disconnect	X	X		X	
DIVDDS60	60 AMO Disconnect			X		X
QTY 2- MAR81037	25 AMP Fuse				X	
QTY 2- MAR81038	30 AMP Fuse	X	X			
QTY 2- MAR81040	40 AMP Fuse			X		X
DIV6126NM	6'X#10 Whip	X	X		X	
DIV6346NM	6'X#8 Whip			X		X
MAR83900	Surge Protector	X	X	X	X	X
CLAUC18383CA	18X38 Pad	X	X		X	X
CLAUC16443CA	16X44 Pad			X		
DIV230-WC3	Linehide Penetration				X	X
DIV230-D3	Linehide Str Length				X	X

A = (Active) Stock at Customer's Branch
 NB = (Non-Branch) Non-Stock at Customer's Branch
 Blank = Non-Stock

GENSCO



MAKE COMFORT *Personal*[™]

Mitsubishi Accessories

Thermostat Interface

Product No	Description
PAC-US444CN-1	Thermostat Interface



Thermostat Wi-Fi Interface

Product No	Description
PAC-WHS01WF-E	Wi-Fi Interface to use with Kumo Cloud App and web service



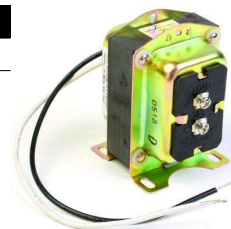
Mars Transformer

Product No	Description
50354	120/208/240/480 Pri 24 Sec



Honeywell Transformer

Product No	Description
AT140A 1018	40VA 120/208/240 V Pri 24 V Sec 40 va Univ. Mount



A = (Active) Stock at Customer's Branch
 NB = (Non-Branch) Non-Stock at Customer's Branch
 Blank = Non-Stock

GENSCO



MAKE COMFORT *Personal*[™]

Mitsubishi Accessories

Wireless Remote Controller Kit

Product No	Description
MHK1	Wireless Remote Controller Backlit



Outdoor Air Sensor

Product No	Description
C7089R 1013	Redlink Wireless Outdoor Sensor



Portable Central Controller

Product No	Description
MCCH1	Portable Central Controller



Honeywell Redlink Enabled Internet Gateway

Product No	Description
THM6000R 1002	4" x 7" x 1 1/2"; 4 H / 2 C



A = (Active) Stock at Customer's Branch
 NB = (Non-Branch) Non-Stock at Customer's Branch
 Blank = Non-Stock

GENSCO



MAKE COMFORT *Personal*TM

Mitsubishi Accessories

Handheld Wireless Controller

Product No	Description
PAR-FA32MA-W	Signal Receiver
PAR-FL32MA-E	Wireless Remote Controller Kit



MA Wired, Wall-Mounted Wired Remote Controller

Product No	Description
PAR-31MAA-J	Wired Remote Controller



MA Wired, Wall-Mounted Wireless Remote Controller

Product No	Description
PAC-YT53CRAU-J	Simple MA Wireless Remote Controller



Control Adapter

Product No	Description
MAC-333IF-E	M-Series Control Adapter Required for Wired Stat



A = (Active) Stock at Customer's Branch
 NB = (Non-Branch) Non-Stock at Customer's Branch
 Blank = Non-Stock

GENSCO



MAKE COMFORT *Personal*[™]

Mitsubishi Accessories

PDM Linesets

Product No	Insulation	Length
1/4 50	1/4"	50'
3/8 50	3/8"	50'
1/2 50	1/2"	50'
3/4 50	3/4"	50'
5/8 50	5/8"	50'
3/4 82	3/4"	82'
7/8 82	7/8"	82'
1/4 164	1/4"	164'
3/8 164	3/8"	164'
1/2 164	1/2"	164'
5/8 164	5/8"	164'



Mini-Split Line Sets

Product No	Liquid Line Size	Suction Line Size	Insulation	Length
40620150B3B6	1/4"	3/8"	1/2"	15'
40620250B3B6	1/4"	3/8"	1/2"	25'
40620500B3B6	1/4"	3/8"	1/2"	50'
40820150B3B6	1/4"	1/2"	1/2"	75'
40820250B3B6	1/4"	1/2"	1/2"	25'
40820500B3B6	1/4"	1/2"	1/2"	50'
41020250B3B6	1/4"	5/8"	1/2"	25'
41020500B3B6	1/4"	5/8"	1/2"	50'
61020250B3B6	3/8"	5/8"	1/2"	25'
61020350B3B6	3/8"	5/8"	1/2"	35'
61020500B3B6	3/8"	5/8"	1/2"	50'



AMC Port Adapter

Product No	Description
04061-0610	Reducer 3/8" Female Flare x 5/8" Male Flare



A = (Active) Stock at Customer's Branch
 NB = (Non-Branch) Non-Stock at Customer's Branch
 Blank = Non-Stock

GENSCO



MAKE COMFORT *Personal*TM

Mitsubishi Accessories

Mueller Port Adapters

Product No	Description
A00481	Adapter Port 1/2" F Flx 3/8" M FI UR3-86
A04879	Adapter Port 1/2" F Flx 5/8" M FI UR3-810
A04888	Adapter Port 3/8" F Flx 1/2" M FI UR3-68
A05041	Adapter Port 1/4" F Flx 3/8" M FI UR3-46



Mueller Flare Fittings

Product No	Description
DE2-6	(55 6) 3/8" Brass Flarexflare Elbow
DN5-8	(40 8 Or A04546) 1/2" Brass Flared Cap
NS4-5	Short Forged Flare Nut 5/16"
U2-5	5/16" Brass Union Coupling Flare



Brazed Ball Valves

Product No	Insulation
BV12BBSI	1/2"
BV14BBSI	1/4"
BV38BBSI	3/8"
BV58BBSI	5/8"



Rectorseal No-Kink Connectors

Product No	Size
66731	1/4" x 36"
66733	3/8" x 36"
66735	5/8" x 36"
66737	1/2" x 36"



A = (Active) Stock at Customer's Branch
 NB = (Non-Branch) Non-Stock at Customer's Branch
 Blank = Non-Stock

GENSCO

Mitsubishi Accessories

Diversitech Speedichannel

Adjustable Flat Bend

Product No	Description
230-AFB3	3" Adjustable Flat Bend
230-AFB4	4" Adjustable Flat Bend



Clips

Product No	Description
230-DCLIP	Clips, 50PK
230-DCLIP-10	Clips & 11" Ties, 10PK



Duct End

Product No	Description
230-DE3	3" Duct End
230-DE4	4" Duct End



Flat Bend

Product No	Description
230-FB3	3" 90 Flat Bend
230-FB453	3" 45 Flat Bend
230-FB454	4" 45 Flat Bend



Flat Wall Escutcheon

Product No	Description
230-FR3	3" Flex Joint
230-FR4	4" Flat Wall Escutcheon



A = (Active) Stock at Customer's Branch
 NB = (Non-Branch) Non-Stock at Customer's Branch
 Blank = Non-Stock

GENSCO

Mitsubishi ACCESSORIES

Diversitech Speedichannel

Flex Joint

Product No	Description
230-FJ3	3" Flex Joint
230-FJ4	4" Flex Joint



Inside Elbow

Product No	Description
230-EB3	3" Inside 90 Elbow
230-EB4	4" Inside 90 Elbow



Line Set Cover

Product No	Description
230-D3	3" Line Set Cover 78"
230-D4	4" Line Set Cover 78"



Long Radius Elbow

Product No	Description
230-LFB3	3" Long Radius Elbow
230-LFB4	4" Long Radius Elbow



Outside Elbow

Product No	Description
230-EIN4	4" Outside 90 Elbow



A = (Active) Stock at Customer's Branch
 NB = (Non-Branch) Non-Stock at Customer's Branch
 Blank = Non-Stock

GENSCO

Mitsubishi ACCESSORIES

Diversitech Speedichannel

Screws

Product No	Description
230-DSCREW	Screws, 100PK



T-Joint

Product No	Description
230-TJ4	4" T-Joint



Union Coupling

Product No	Description
230-CP3	3" Union Coupling
230-CP4	4" Union Coupling



Wall Penetration Cover

Product No	Description
230-WC3	3" Wall Penetration Cover
230-WC4	4" Wall Penetration Cover



Mitsubishi Linehide

45 Degree Elbows

Product No	Description
NM-75	Elbow Horizontal 45 Degree
NM-100	Elbow Horizontal 45 Degree



A = (Active) Stock at Customer's Branch
 NB = (Non-Branch) Non-Stock at Customer's Branch
 Blank = Non-Stock

GENSCO

Mitsubishi ACCESSORIES

Mitsubishi Linehide

90 Degree Elbows

Product No	Description
NC-75	90 Deg Elbow Vertical Reversible
NE-75	90 Deg Elbow Horizontal
NC-100	90 Deg Elbow Vertical Reversible
NE-100	90 Deg Elbow Horizontal



Corner Caps

Product No	Description
NA-75	Corner Cap/Soffit Entry Fitting
NA-100	Corner Cap/Soffit Entry Fitting
NA-140	Corner Cap/Soffit Entry Fitting



End Sockets

Product No	Description
NR-100	End Socket
NR-140	End Socket



Flexible Joints

Product No	Description
NF-75	Flexible Joint 21-5/8in
NF-75M	Flexible Joint 39-3/8in
NF-100	Flexible Joint 31-1/2in
NF-140	Flexible Joint 39-3/8in



Simple Wall Covers

Product No	Description
NY-75	Simple Wall Cover Line-Hide
NY-100	Simple Wall Cover Line-Hide
NY-140	Simple Wall Cover



A = (Active) Stock at Customer's Branch
 NB = (Non-Branch) Non-Stock at Customer's Branch
 Blank = Non-Stock

GENSCO

Mitsubishi ACCESSORIES

Mitsubishi Linehide

Socket Couplings

Product No	Description
NS-75	Socket Coupling Line-Hide
NS-100	Socket Coupling Line-Hide



Split Line Tubes

Product No	Description
CD-75	Split Line Tube Pvc
CD-100	Split Line Tube Pvc
CD-140	Split Line Tube Pvc



T-Joint

Product No	Description
NT-140	T-Joint Line Hide



Variant Socket

Product No	Description
NJ-75/100	Variant Socket/Reducer



Wall Cover Inlets

Product No	Description
NW-75	Wall Cover Inlet
NW-100	Wall Cover Inlet



A = (Active) Stock at Customer's Branch
 NB = (Non-Branch) Non-Stock at Customer's Branch
 Blank = Non-Stock

GENSCO



MAKE COMFORT *Personal*[™]

Mitsubishi Accessories

Venture Tape

Product No	Description
1507W	White 2" x 60 Yard Roll UV
444	Black 2" x 60 Yard Roll UV



Airex E-Flex Guard Lineset Covers

Product No	Insulation	Length
72C	3/4"	6'
72E	1/2"	6'
750E	1/2"	75'
90C	3/4"	90 EI
90E	1/2"	90 EI



Airex GS30 Lineset Outlets

Product No	Description	Insulation
TGS 550 G	Titan GS30 Outlet 1/2" Gray Masonry	1/2"
TGS 575 G	Titan GS30 Outlet 3/4" Gray Masonry	3/4"
TSS 550 G	Titan TSS Outlet 1/2" Gray Wall Siding	1/2"
TSS 575 G	Titan TSS Outlet 3/4" Gray Wall Siding	3/4"



Diversitech Mini-Split Pads & Mounting Brackets

Product No	Description	Size	Insulation
EL18 38 3		18" x 38"	3"
UC16 36 3		16" x 36"	3"
UC18 38 3CA	With Strap	18" x 38"	3"
UC16 44 3CA	With Strap	16" x 44"	3"
230-MB17W	Mounting Blocks		
230-MBCW	End Caps for Mounting Blocks		



A = (Active) Stock at Customer's Branch
 NB = (Non-Branch) Non-Stock at Customer's Branch
 Blank = Non-Stock

GENSCO



MAKE COMFORT *Personal*TM

Mitsubishi ACCESSORIES

Mighty Bracket Mini-Split Installation Tool

Product No	Description
97705	Mini Split Installation Tool



Rectorseal Hanging Brackets

Product No	Description
87733	Condenser Wall Bracket 300lb Capacity



Sauermann Hanging Brackets

Product No	Description
BS520	Wall Bracket 440lb Capacity #130
BVD40	Vibration Dampers For Bs520 #027



Diversitech Hanging Brackets

Product No	Description
230-B3L	Bracket 21" Type 3 Hef-T-Bracket
230-B3M	Bracket 19" Type 3 Hef-T-Bracket
230-MB17W	Mounting Blocks For Minisplit Outdoor
230-MBCW	End Cap For Minisplit Mounting Blocks (4)
FF-250-S	Hef-T-Foot Rubber Base 9.8" w/1.6" x 8" Strut



A = (Active) Stock at Customer's Branch
 NB = (Non-Branch) Non-Stock at Customer's Branch
 Blank = Non-Stock





MAKE COMFORT *Personal*TM

Mitsubishi Accessories

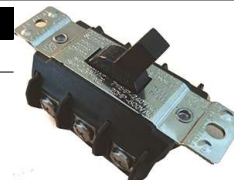
Diversitech Electrical - Disconnect Switch

Product No	Description
DDS 30	Disconnect Switch AC Fusible 3r 30a 240v
DDS 60	Disconnect Switch AC Fusible 3r 60a 240v



3-Pole Mini-Split Disconnect Switch

Product No	Description
84711	30A-600V 3 Pole 3Ph AC Motor Switch



Southwire Electrical - Mini-Split Cable

Product No	Description	Gauge	Ft./Roll
604260408	For "P" Series ONLY	16/4	250'
604100408	Minisplit Cable (M-Series)	14/4	250'
60444 604445008	Minisplit Cable (M-Series)	14/4	50'
75702 757020623	Minisplit Cable (City Multi)	16/2	250'
92484 924840409	Corra/Clad Mini Split Cable	14/3	250'



Refco Gobi Condensate Removal Pump

Product No	Description
4678538	120/240v Mini Split Under Mount Condensate Pump



A = (Active) Stock at Customer's Branch
 NB = (Non-Branch) Non-Stock at Customer's Branch
 Blank = Non-Stock





MAKE COMFORT *Personal*[™]

Mitsubishi Accessories

Sauermann Mini Condensate Pump

Product No	Voltage
SI-3000SIUS11	120V
SI-3000SIUS23	230V



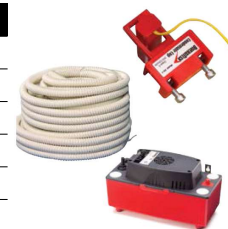
Rectorseal Aspen Mini Condensate Pump

Product No	Description	Voltage
83939	Aspen Mini White Condensate Pump - Universal	100-250V
83809	Mini Aqua Condensate Pump Kit	100-250V
83909	Orange Mini Condensate Pump - Universal	100-250V
83919	Orange Maxi Condensate Pump - Universal	100-250V



Diversitech Condensate Removal

Product No	Description
230-DL16	5/8" ID Mini Split Drain Line 160'
CC-1	Drain Pan Switch
CP 22-230	Condensate Pump 230V 22' Lift w/o Tubing
CVMINI	Mini Condensate Pump Var Spd 120-240v
SOS-1	Safety Overflow Switch
WS-1	Wet Switch Flood Detector



Drain Pan Sensor

Product No	Description
DPLS1	Drain Pan Sensor / Control



A = (Active) Stock at Customer's Branch
 NB = (Non-Branch) Non-Stock at Customer's Branch
 Blank = Non-Stock

GENSCO



MAKE COMFORT *Personal*[™]

Mitsubishi Accessories

Drain Pan Heaters

Product No	Outdoor Unit	Voltage	Power Input
MAC-640BH-U	MUZ-GE09/12/15NA, MUZ-FE09/12NA, MUZ-FH09/12NA, SUZ-KA09/12/15NA	208/230V	106/120 W
MAC-641BH-U	MUZ-GE18NA, SUZ-KA18NA	208/230V	98/120 W
MAC-642BH-U	MUZ-GE24NA, MUZ-FE18NA, MUZ-FH15NA	208/230V	98/120 W
PAC-645BH-E			
PAC-SJ20BH-E			



MAC-640BH-U



MAC-641BH-U



MAC-642BH-U

Mitsubishi Filters

Product No	Description
MAC-1415FT-E	Anti-Allergy Enzyme Filter MSZ/Y-D30/36
MAC-2300FT	Anti-Allergy Enzyme Filter MSZ/Y-A24
MAC-2310FT-E	Enzyme filter MSZ/Y-GE24 2pk
MAC-308FT-E	Platinum Deodorizing Filter MSZ-FD09/12
MAC-333IF-E	System Control Interface M-Series Only
MAC-408FT-E	Anti-Allergy Enzyme Filter
MAC-415FT-E	Anti-Allergy Enzyme Filter
MAC-418FT-E	Anti-Allergy Enzyme Filter



Columbia Square to Round Transitions For Horizontal Ducted Units

Product No	Mitsubishi Unit	A	B	C	D
SQTORD62688	SEZ-KD 09NA4	6"	26 1/8"	8" Rd.	8" Rd.
SQTORD62610	SEZ-KD 09NA4	6"	26 1/8"	10" Rd.	—
SQTORD63410	SEZ-KD12NA4, SEZ-KD15NA4	6"	34"	10" Rd.	—
SQTORD63412	SEZ-KD12NA4, SEZ-KD15NA4	6"	34"	12" Rd.	—
SQTORD64112	SEZ-KD18NA4	6"	41 7/8"	12" Rd.	—



A = (Active) Stock at Customer's Branch
 NB = (Non-Branch) Non-Stock at Customer's Branch
 Blank = Non-Stock

GENSCO



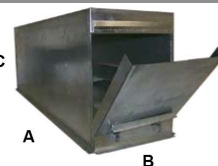
MAKE COMFORT *Personal*[™]

Mitsubishi ACCESSORIES

Columbia Filter Boxes for PEFY-AU, PEFY & PEAD

SPECIAL ORDER

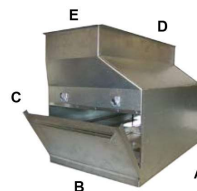
Product No	Mitsubishi Unit	A	B	C	Filter Size (qty)
PEFY AU0612	PEFY-P06NMAU, PEFY-P08NMAU, PEFY-P12NMAU	26.5"	8.625"	12"	8.25 x 26.0x*(1)
PEFY AU1518	PEFY-P015NMAU, PEFY-P18NMAU	34.5"	8.625"	12"	8.25x17x*(2)
PEFY AU2430	PEFY-P24NMAU, PEFY-P27NMAU, PEFY-P30NMAU	42"	8.625"	12"	8.25x20.75x*(2)
PEFY AU3648	PEFY-P36NMAU, PEFY-P48NMAU	54"	8.625"	12"	8.25x26.75x*(2)
PEFY AU54	PEFY-P54NMAU	62"	8.625"	12"	8.25x20.5x*(3)
PEFY1524	PEFY-P015NMHU, PEFY-P18NMHU, PEFY-P24NMHU	25.5"	13.625"	12"	13.25x25.25x*(1)
PEFY2730	PEFY-P27NMHU, PEFY-P30NMHU	35.25"	13.625"	12"	13.25x34.75x*(1)
PEFY3654	PEFY-P36NMHU, PEFY-P48NMHU, PEFY-P54NMHU	43.25"	13.625"	12"	13.25x21.5x*(2)
PEFY7296	PEFY-P72NMHU, PEFY-P96NMHU	47.75"	13.625"	12"	16.75x23.75x*(2)
PEAD2340	PEAD-A24AA, PEAD-A30AA	42"	8.625"	12"	8.25x20.75x*(2)
PEAD3642	PEAD-A36AA, PEAD-A42AA	54"	8.625"	12"	8.25x26.75x*(2)



Columbia FILTER Boxes for PEFY, with Common Sized Filters

SPECIAL ORDER

Product No	Mitsubishi Unit	A	B	C	D	E	Filter Size (qty)
PEFY1524CF	PEFY-P15NMHU, PEFY-P18NMHU, PEFY-P24NMHU,	25.5"	13.625"	20"	25"	16"	15-3/8x24-3/8x*(1)
PEFY2730CF	PEFY-P27NMHU, PEFY-P30NMHU	35.25"	13.625"	20"	49"	16"	15-3/8x24-3/8x*(2)
PEFY3654CF	PEFY-P36NMHU, PEFY-P48NMHU, PEFY-P54NMHU	43.25"	13.625"	20"	49"	16"	15-3/8x24-3/8x*(2)
PEFY7296CF	PEFY-P72NMHU, PEFY-P96NMHU	47.75"	13.625"	20"	49"	16"	15-3/8x24-3/8x*(2)



A = (Active) Stock at Customer's Branch
 NB = (Non-Branch) Non-Stock at Customer's Branch
 Blank = Non-Stock





MAKE COMFORT *Personal*[™]

Mitsubishi ACCESSORIES

Columbia Base Cans for MVZ & PVA Air Handlers

Product No	Description	Mitsubishi Unit	Size
BC AH 17 21 18 M		A12AA4, A18AA4, A24AA4	17 3/4" x 21" x 18"
BC 17 21 24 2l	2" Insulation	A12AA4, A18AA4, A24AA4	17 3/4" x 21" x 24"
BC 17 21 36		A12AA4, A18AA4, A24AA4	17 3/4" x 21" x 36"
BC 17 21 36 2l	2" Insulation	A30AA4, A36AA4	17 3/4" x 21" x 36"
BC AH 21 18		A30AA4, A36AA4	21 1/2" x 21" x 18"
BC AH 21 18 2l	2" Insulation	A30AA4, A36AA4	21 1/2" x 21" x 18"



Columbia Plenums for MVZ & PVA Air Handlers

Supply Air

Product No	Description	Mitsubishi Unit	Size
PLE 15 16 24		A12AA4, A18AA4, A24AA4	15 1/2" x 16 1/2" x 23"
PLE 17		A30AA4, A36AA4	16 1/2" x 20" x 23"
PLE 17 2l	2" Insulation	A30AA4, A36AA4	16 1/2" x 20" x 23"
PLE 17 36		A30AA4, A36AA4	16 1/2" x 20" x 35"
PLE 17 36 2l	2" Insulation	A30AA4, A36AA4	16 1/2" x 20" x 35"



Return Air

Product No	Mitsubishi Unit	Size
PLE 15 19 24	A12AA4, A18AA4, A24AA4	15" x 19" x 23"



JB Mini-Split Tools - Universal

Product No	Description
MSKIT1	Universal Mini Split Tool Kit



A = (Active) Stock at Customer's Branch
 NB = (Non-Branch) Non-Stock at Customer's Branch
 Blank = Non-Stock





MAKE COMFORT *Personal*TM

Mitsubishi Accessories

JB Mini-Split Tools - Basic

Product No	Description
MSKIT3	Basic Mini Split Tool Kit



Mini-Split Tools

Product No	Description
SHLD-8-DRIVER	Locking Cap Driver 8" W/Bit
SHLD-BIT	Locking Key Bit 2-Pack
SHLD-U12	Locking Cap Universal "Shield" 12-Pack
SHLD-U4	Locking Cap Universal "Shield" 4-Pack
SHLD-U50	Locking Cap Universal "Shield" 50-Pack
RT201B	Gasket Thread Sealant & Assembly Lube



A = (Active) Stock at Customer's Branch
 NB = (Non-Branch) Non-Stock at Customer's Branch
 Blank = Non-Stock

GENSCO



MAKE COMFORT *Personal*[™]

City Multi S Series

PUMY — S Series Outdoor Units

Product No	Cooling	Heating	Net Weight	Line	Voltage	MCA / Max Fuse
	BTUs	BTUs		Size		
PUMY-P36NHMUR4	36,000	40,000	287 lbs.	3/8" x 5/8"	208/230	26 A / 40 A
PUMY-P48NHMUR4	48,000	54,000	287 lbs.	3/8" x 5/8"	208/230	26 A / 40 A
PUMY-P60NKMU	60,000	66,000	313 lbs.	3/8" x 3/4"	208/230	35 A / 42 A



PVFY — Vertical-Concealed Air Handlers

Product No	Cooling	Heating	Net Weight	Line	Voltage	MCA / Max Fuse
	BTUs	BTUs		Size		
PVFY-P12NAMU-E	12,000	13,500	88 lbs.	1/4" x 1/2"	208/230	0.86/0.76 A / 15 A
PVFY-P18NAMU-E	18,000	20,000	98 lbs.	1/2" x 1/2"	208/230	1.85/1.64 A / 15 A
PVFY-P24NAMU-E	24,000	27,000	108 lbs.	3/8" x 5/8"	208/230	1.85/1.64 A / 15 A
PVFY-P30NAMU-E	30,000	34,000	115 lbs.	3/8" x 5/8"	208/230	2.9/2.64 A / 15 A
PVFY-P36NAMU-E	36,000	40,000	120 lbs.	3/8" x 5/8"	208/230	2.41/2.14 A / 15 A
PVFY-P48NAMU-E	48,000	54,000	160 lbs.	3/8" x 5/8"	208/230	2.84 / 2.51 A / 15 A
PVFY-P54NAMU-E	54,000	60,000	168 lbs.	3/8" x 5/8"	208/230	3.53 / 3.14 A / 15 A



Down Flow Kits for PVFY

Product No	Description
DFK-2	Down Flow Kit for PVFY-P30, P36
DFK-3	Down Flow Kit for PVFY-P48, P54



PKFY — Wall-Mounted Indoor Units

Product No	Cooling	Heating	Net Weight	Line	Voltage	MCA / Max Fuse
	BTUs	BTUs		Size		
PKFY-P06NBMU-E2	6,000	6,700	22 lbs.	1/4" x 1/2"	208/230	0.19 A / 15 A
PKFY-P08NHMU-E2	8,000	9,000	22 lbs.	1/4" x 1/2"	208/230	0.19 A / 15 A
PKFY-P12NHMU-E2	12,000	13,500	29 lbs.	1/4" x 1/2"	208/230	0.43 A / 15 A
PKFY-P15NHMU-E2	15,000	17,000	29 lbs.	1/4" x 1/2"	208/230	0.43 A / 15 A
PKFY-P18NHMU-E2	18,000	20,000	29 lbs.	1/4" x 1/2"	208/230	0.55 A / 15 A
PKFY-P24NKMU-E2	24,000	27,000	46 lbs.	3/8" x 5/8"	208/230	0.55 A / 15 A
PKFY-P30NKMU-E2	30,000	34,000	46 lbs.	3/8" x 5/8"	208/230	0.73 A / 15 A



A = (Active) Stock at Customer's Branch
 NB = (Non-Branch) Non-Stock at Customer's Branch
 Blank = Non-Stock





MAKE COMFORT *Personal*[™]

City Multi S Series

PMFY — Ceiling-Recessed Indoor Units (One Way)

Contact Branch for Availability

Product No	Cooling	Heating	Net Weight	Line	Voltage	MCA / Max Fuse
	BTUs	BTUs		Size		
PMFY-P06NBMU-ER5	6,000	6,700	31 lbs.	1/4" x 1/2"	208/230	0.25 A / 15A
PMFY-P08NBMU-ER5	8,000	9,000	31 lbs.	1/4" x 1/2"	208/230	0.25 A / 15A
PMFY-P12NBMU-ER5	12,000	13,500	31 lbs.	1/4" x 1/2"	208/230	0.26 A / 15A
PMFY-P15NBMU-ER5	15,000	17,000	31 lbs.	1/4" x 1/2"	208/230	0.33 A / 15A



Grille for PMFY Ceiling-Recessed Unit

Product No	Description
PMP-16BMUW	Grille for PMFY 06/08/12/15



PLFY — Ceiling-Recessed Indoor Units (4 Way)

Product No	Cooling	Heating	Net Weight	Line	Voltage	MCA / Max Fuse
	BTUs	BTUs		Size		
PLFY-P08NCMU-ER4	8,000	9,000	41 lbs.	1/4" x 1/2"	208/230	0.29 A / 15 A
PLFY-P12NCMU-ER4	12,000	13,500	44 lbs.	1/4" x 1/2"	208/230	0.35 A / 15 A
PLFY-P15NCMU-ER4	15,000	17,000	44 lbs.	1/4" x 1/2"	208/230	0.35 A / 15 A
PLFY-P30NBMU-ER2	30,000	34,000	51 lbs.	3/8" x 5/8"	208/230	0.64 A / 15 A
PLFY-P18NBMU-ER2	18,000	20,000	64 lbs.	1/4" x 1/2"	208/230	0.64 A / 15 A
PLFY-P30NBMU-ER2	30,000	34,000	64 lbs.	3/8" x 5/8"	208/230	0.64 A / 15 A



Grille for PLYF Ceiling-Recessed Unit

Product No	Description
PLP-40BAU	Grille for PLYF 12/15/18/24/30/36 Indoor
SLP-15AAUW	Grille Required for PLYF 08/12/15 NC Series



A = (Active) Stock at Customer's Branch
 NB = (Non-Branch) Non-Stock at Customer's Branch
 Blank = Non-Stock





MAKE COMFORT *Personal*[™]

City Multi S Series

PEFY— Ceiling-Concealed Ducted Indoor Units

Low Profile

Product No	Cooling	Heating	Net Weight	Line	Voltage	MCA / Max Fuse
	BTUs	BTUs		Size		
PEFY-P06NMAU-E3	6,000	6,700	49 lbs.	1/4" x 1/2"	208/230	1.05 A / 15 A
PEFY-P08NMAU-E3	8,000	9,000	49 lbs.	1/4" x 1/2"	208/230	1.05 A / 15 A
PEFY-P12NMAU-E3	12,000	13,500	49 lbs.	1/4" x 1/2"	208/230	1.20 A / 15 A
PEFY-P15NMAU-E3	15,000	17,000	58 lbs.	1/4" x 1/2"	208/230	1.45 A / 15 A
PEFY-P18NMAU-E3	18,000	20,000	58 lbs.	1/4" x 1/2"	208/230	1.56 A / 15 A
PEFY-P24NMAU-E3	24,000	27,000	67 lbs.	5/8" x 3/8"	208/230	2.73 A / 15 A
PEFY-P27NMAU-E3	27,000	30,000	67 lbs.	5/8" x 3/8"	208/230	2.73 A / 15 A
PEFY-P30NMAU-E3	30,000	34,000	67 lbs.	5/8" x 3/8"	208/230	2.73 A / 15 A
PEFY-P36NMAU-E3	36,000	40,000	86 lbs.	5/8" x 3/8"	208/230	3.32 A / 15 A
PEFY-P48NMAU-E3	48,000	54,000	86 lbs.	5/8" x 3/8"	208/230	3.41 A / 15 A



High Static

Product No	Cooling	Heating	Net Weight	Line	Voltage	MCA / Max Fuse
	BTUs	BTUs		Size		
PEFY-P15NMHU-E2	15,000	17,000	98 lbs.	1/4" x 1/2"	208/230	1.63/1.50 A / 15A
PEFY-P18NMHU-E2	18,000	20,000	98 lbs.	1/4" x 1/2"	208/230	1.63/1.50 A / 15A
PEFY-P24NMHU-E2	24,000	27,000	100 lbs.	3/8" x 5/8"	208/230	2.11/1.83 A / 15A
PEFY-P27NMHU-E2	27,000	30,000	124 lbs.	3/8" x 5/8"	208/230	2.35/2.13 A / 15A
PEFY-P30NMHU-E2	30,000	34,000	124 lbs.	3/8" x 5/8"	208/230	2.70/2.45 A / 15A
PEFY-P36NMHU-E2	36,000	40,000	153 lbs.	3/8" x 5/8"	208/230	4.16/3.67 A / 15A
PEFY-P48NMHU-E2	48,000	54,000	153 lbs.	3/8" x 5/8"	208/230	4.16/3.67 A / 15A
PEFY-P54NMHU-E2	54,000	60,000	157 lbs.	3/8" x 5/8"	208/230	4.18/3.69 A / 15A
PEFY-P72NMHSU-E	72,000	80,000	221 lbs.	3/8" x 5/8"	208/230	5.60/6.18 A / 15A
PEFY-P96NMHSU-E	96,000	108,000	221 lbs.	7/8" x 3/8"	208/230	8.2 A / 15A



A = (Active) Stock at Customer's Branch
 NB = (Non-Branch) Non-Stock at Customer's Branch
 Blank = Non-Stock





MAKE COMFORT *Personal*TM

City Multi S Series — Zone Controller Options

Handheld Wireless Controller

Product No	Description
PAR-FL32MA-E	Wireless Remote Controller
PAR-FA32MA-W	Signal Receiver



MA Wired, Wall-Mounted Remote Controller

Product No	Description
PAC-YT53CRAU-J	Wireless Remote Controller



Smart ME Remote Controller

Product No	Description
PAR-U01MEDU-J	Smart ME Backlit Touchscreen Remote Controller



Centralized Controller - Touch Controller

Product No	Description
TC-24B-J	Touch Controller



A = (Active) Stock at Customer's Branch
 NB = (Non-Branch) Non-Stock at Customer's Branch
 Blank = Non-Stock

GENSCO



MAKE COMFORT *Personal*TM

City Multi S Series — Zone Controller Options

Centralized Controller

Product No	Description
AE-200A	Centralized Controller



Centralized Controller Kit

Product No	Description
EB-50GU-A	Centralized Controller Kit



Electrical - Mini Split Cable

Product No	Description
75702 757020623	Minisplit Cable (City Multi)



A = (Active) Stock at Customer's Branch
 NB = (Non-Branch) Non-Stock at Customer's Branch
 Blank = Non-Stock

GENSCO