

**EXHIBIT NO. \_\_\_(JvdH-3)  
DOCKETS UE-151871/UG-151872  
PSE EQUIPMENT LEASING SERVICE  
WITNESS: JOHN VAN DEN HEUVEL**

**BEFORE THE  
WASHINGTON UTILITIES AND TRANSPORTATION COMMISSION**

**WASHINGTON UTILITIES AND  
TRANSPORTATION COMMISSION,**

**Complainant,**

**v.**

**PUGET SOUND ENERGY,**

**Respondent.**

**Dockets UE-151871  
UG-151872**

**SECOND EXHIBIT TO THE DIRECT TESTIMONY  
OF JOHN VAN DEN HEUVEL  
AMS Priceshets BLANK 5.05.2016 (1-32 pages)  
ON BEHALF OF SMACNA-WW**

**June 7, 2016**



## AMERICAN STANDARD S-SERIES GAS FURNACES

### S9V2 - Two Stage ECM Variable Speed

#### Direct Vent, Upflow/Horizontal Left/Horizontal Right Condensing Gas Furnace

Product No	Airflow		Output BTuh		Flue Size (in)	Dimensions			Max	
	In Tons	AFUE	Stage2	Stage1		H	W	D	Fuse	Filter Size
AMSS9V2B040U3PSAA	3	96.0	38,800	25,220	2, 3, 4	34	17.5	28.75	15	17 x 25 x 1
AMSS9V2B060U3PSAA	3	96.0	58,200	37,830	2, 3, 4	34	17.5	28.75	15	17 x 25 x 1
AMSS9V2B060U4PSAA	4	96.0	58,200	37,830	2, 3, 4	34	17.5	28.75	15	17 x 25 x 1
AMSS9V2B080U3PSAA	3	96.0	77,600	50,440	2, 3, 4	34	17.5	28.75	15	17 x 25 x 1
AMSS9V2B080U4PSAA	4	96.0	77,600	50,440	2, 3, 4	34	17.5	28.75	15	17 x 25 x 1
AMSS9V2C080U5PSAA	5	96.0	77,600	50,440	2, 3, 4	34	21	28.75	15	20 x 25 x 1
AMSS9V2C100U4PSAA	4	96.0	97,000	63,050	2, 3, 4	34	21	28.75	15	20 x 25 x 1
AMSS9V2C100U5PSAA	5	96.0	97,000	63,050	2, 3, 4	34	21	28.75	15	20 x 25 x 1
AMSS9V2D120U5PSAA	5	96.0	116,400	75,660	3, 4	34	24.5	28.75	15	24 x 25 x 1



#### Direct Vent, Downflow Condensing Gas Furnace

Product No	Airflow		Output BTuh		Flue Size (in)	Dimensions			Max	
	In Tons	AFUE	Stage2	Stage1		H	W	D	Fuse	Filter Size
AMSS9V2B040D3PSAA	3	96.0	38,800	25,220	2, 3, 4	34	17.5	28.75	15	(2)14 x 20 x 1
AMSS9V2B060D3PSAA	3	96.0	58,200	37,830	2, 3, 4	34	17.5	28.75	15	(2)14 x 20 x 1
AMSS9V2B080D3PSAA	3	96.0	77,600	50,440	2, 3, 4	34	17.5	28.75	15	(2)14 x 20 x 1
AMSS9V2B080D4PSAA	4	96.0	77,600	50,440	2, 3, 4	34	17.5	28.75	15	(2)14 x 20 x 1
AMSS9V2C100D4PSAA	4	96.0	97,000	63,050	2, 3, 4	34	21	28.75	15	(2)16 x 20 x 1
AMSS9V2C100D5PSAA	5	96.0	97,000	63,050	2, 3, 4	34	21	28.75	15	(2)16 x 20 x 1
AMSS9V2D120D5PSAA	5	96.0	116,400	75,660	3, 4	34	24.5	28.75	15	(2)16 x 20 x 1

A = (Active) Stock at Customer's Branch  
 NB = (Non-Branch) Non-Stock at Customer's Branch  
 Blank = Non-Stock





## AMERICAN STANDARD S-SERIES GAS FURNACES

### Platinum 95 - Modulating Communicating ECM Variable Speed

#### Direct/Non-Direct Vent, Upflow/Horizontal Left Condensing - Platinum Series

Product No	Airflow		Output BTuh		ICS AFUE	Flue Size (in)	Dimensions			Wt. lbs.	Max Fuse	Filter Size
	In Tons		Stage3	Stage1			H	W	D			
AUHMB060ACV3VB	3		58,380	23,352	97.3	2, 2 1/2, 3	40	17.5	28	158	15	17 x 25 x 1
AUHMB080ACV3VB	3		77,360	30,944	96.7	2, 2 1/2, 3	40	17.5	28	168	15	17 x 25 x 1
AUHMC100ACV4VB	4		96,000	38,400	96	2 1/2, 3	40	21	28	197	20	20 x 25 x 1
AUHMD120ACV5VB	5		116,400	52,380	97	3	40	24.5	28	206	20	20 x 25 x 1



#### Direct/Non-Direct Vent, Downflow/Horizontal Right Condensing - Platinum Series

Product No	Airflow		Output BTuh		ICS AFUE	Flue Size (in)	Dimensions			Wt. lbs.	Max Fuse	Filter Size
	In Tons		Stage3	Stage1			H	W	D			
ADHMB060BCV3VB	3		57,000	22,800	95	2, 2 1/2, 3	40	17.5	28	160	15	14 x 20 x 1
ADHMB080ACV3VB	3		76,000	30,400	96	2, 2 1/2, 3	40	17.5	28	168	15	14 x 20 x 1
ADHMC100ACV4VB	4		96,000	38,400	96	2 1/2, 3	40	21	28	185	20	16 x 20 x 1
ADHMD120BCV5VB	5		114,000	51,300	95	3	40	24.5	28	206	20	16 x 20 x 1

### Gold 95v-Two Stage ECM Variable Speed

#### Direct/Non-Direct Vent, Upflow/Horizontal Left Condensing - Gold Series

Product No	Airflow		Output BTuh		ICS AFUE	Flue Size (in)	Dimensions			Wt. lbs.	Max Fuse	Filter Size
	In Tons		Stage2	Stage1			H	W	D			
AUH2B060A9V3VB	3		58,200	37,830	97	2, 2 1/2, 3	40	17.5	28	158	15	17 x 25 x 1
AUH2B080A9V3VB	3		77,600	50,440	97	2, 2 1/2, 3	40	17.5	28	168	15	17 x 25 x 1
AUH2B080A9V4VB	4		77,600	50,440	97	2, 2 1/2, 3	40	17.5	28	170	20	17 x 25 x 1
AUH2C100A9V4VB	4		96,700	62,855	96.7	2 1/2, 3	40	21	28	197	20	20 x 25 x 1
AUH2D120A9V5VB	5		116,040	75,426	96.7	3	40	24.5	28	206	20	24 x 25 x 1



#### Direct/Non-Direct Vent, Downflow/Horizontal Right Condensing - Gold Series

Product No	Airflow		Output BTuh		ICS AFUE	Flue Size (in)	Dimensions			Wt. lbs.	Max Fuse	Filter Size
	In Tons		Stage2	Stage1			H	W	D			
ADH2B060A9V3VB	3		57,600	37,440	96	2, 2 1/2, 3	40	17.5	28	160	15	14 x 20 x 1
ADH2B080A9V3VB	3		76,800	49,920	96	2, 2 1/2, 3	40	17.5	28	168	15	14 x 20 x 1
ADH2B080A9V4VB	4		76,800	49,400	95	2, 2 1/2, 3	40	17.5	28	172	20	14 x 20 x 1
ADH2C100A9V4VB	4		96,000	62,400	96	2 1/2, 3	40	21	28	185	20	16 x 20 x 1
ADH2D120A9V5VB	5		115,200	74,880	96	3	40	24.5	28	206	20	16 x 20 x 1

A = (Active) Stock at Customer's Branch  
 NB = (Non-Branch) Non-Stock at Customer's Branch  
 Blank = Non-Stock





## AMERICAN STANDARD 95% and 90% FURNACES

### Silver 95-Single Stage

#### Direct/Non-Direct Vent, Upflow/Horizontal Left Condensing - Silver Series

Product No	Airflow	Nominal	ICS	Flue Size	Dimensions			Wt.	Max	Filter Size
	In Tons	Output (Btuh)			AFUE	(in)	H			
AUH1B040A9241A	2	38,000	95	2, 2 1/2, 3	40	17.5	28	139	15	17 x 25 x 1
AUH1B060A9361A	3	57,000	95	2, 2 1/2, 3	40	17.5	28	150	15	17 x 25 x 1
AUH1B080A9421B	3.5	73,150	95	2, 2 1/2, 3	40	17.5	28	158	15	17 x 25 x 1
AUH1C080A9601A	5	76,000	95	3	40	21	28	171	20	20 x 25 x 1
AUH1C100A9481A	4	92,150	95	3	40	21	28	171	20	20 x 25 x 1
AUH1D100A9601A	5	92,150	95	3	40	24.5	28	197	20	24 x 25 x 1
AUH1D120A9601A	5	104,500	95	3	40	24.5	28	205	20	24 x 25 x 1



#### Direct/Non-Direct Vent, Downflow/Horizontal Right Condensing - Silver Series

Product No	Airflow	Nominal	ICS	Flue Size	Dimensions			Wt.	Max	Filter Size
	In Tons	Output (Btuh)			AFUE	(in)	H			
ADH1B040A9241A	2	38,000	95	2, 2 1/2, 3	40	17.5	28	155	15	14 x 20 x 1
ADH1B065A9421A	3.5	57,000	95	2, 2 1/2, 3	40	17.5	28	168	15	14 x 20 x 1
ADH1C085A9481A	4	76,000	95	2 1/2, 3	40	21	28	185	15	16 x 20 x 1
ADH1D110A9601A	5	104,500	95	2 1/2, 3	40	24.5	28	206	20	16 x 20 x 1

### Silver 95 - Single Stage with ECM Multi-Speed Motor - X-13

#### Direct/Non-Direct Vent, Upflow/Horizontal Left Condensing - Silver Series

Product No	Airflow	Nominal	ICS	Flue Size	Dimensions			Wt.	Max	Filter Size
	In Tons	Output (Btuh)			AFUE	(in)	H			
AUH1B040A9H21B	2	38,000	95	2, 2 1/2, 3	40	17.5	28	139	15	17 x 25 x 1
AUH1B060A9H31B	3	57,000	95	2, 2 1/2, 3	40	17.5	28	150	15	17 x 25 x 1
AUH1B080A9H31B	3	73,150	95	2, 2 1/2, 3	40	17.5	28	158	15	17 x 25 x 1
AUH1C100A9H41B	3.5	92,150	95	3	40	21	28	171	15	20 x 25 x 1
AUH1D120A9H51B	5	104,500	95	3	40	24.5	28	205	20	24 x 25 x 1



#### Direct/Non-Direct Vent, Downflow/Horizontal Left Condensing - Silver Series

Product No	Airflow	Nominal	ICS	Flue Size	Dimensions			Wt.	Max	Filter Size
	In Tons	Output (Btuh)			AFUE	(in)	H			
ADH1B040A9H21B	2	38,000	95	2, 2 1/2, 3	40	17.5	28	145	15	14 x 20 x 1
ADH1B065A9H31B	3	57,000	95	2, 2 1/2, 3	40	17.5	28	158	15	14 x 20 x 1
ADH1C085A9H41B	4	76,000	95	2 1/2, 3	40	21	28	171	15	16 x 20 x 1
ADH1D110A9H51A	5	104,500	95	2 1/2, 3	40	24.5	28	205	20	16 x 20 x 1

A = (Active) Stock at Customer's Branch  
 NB = (Non-Branch) Non-Stock at Customer's Branch  
 Blank = Non-Stock





## AMERICAN STANDARD 95% and 90% FURNACES

### American Standard 92

#### Direct/Non-Direct Vent, Upflow/Horizontal Left Condensing

Product No	Airflow	Nominal	AFUE	Flue Size (in)	Dimensions			Wt. lbs.	Max Fuse	Filter Size
	In Tons	Output (Btuh)			H	W	D			
AUC1B040A9241A	2	37,000	92.1	2, 2 1/2, 3	40	17.5	28	139	15	17 x 25 x 1
AUC1B060A9361A	3	56,000	92.1	2, 2 1/2, 3	40	17.5	28	150	15	17 x 25 x 1
AUC1B080A9421A	3.5	74,000	92.1	2, 2 1/2, 3	40	17.5	28	158	15	17 x 25 x 1
AUC1C100A9481A	4	94,000	92.1	2 1/2, 3	40	21	28	171	20	20 x 25 x 1
AUC1D100A9601A	5	93,000	92.1	2 1/2, 3	40	24.5	28	197	20	24 x 25 x 1
AUC1D120A9601A	5	113,000	92.1	2 1/2, 3	40	24.5	28	205	20	24 x 25 x 1



#### Direct/Non-Direct Vent, Downflow/Horizontal Right Condensing

Product No	Airflow	Nominal	AFUE	Flue Size (in)	Dimensions			Wt. lbs.	Max Fuse	Filter Size
	In Tons	Output (Btuh)			H	W	D			
ADC1B040A9241A	2	37,000	92.1	2, 2 1/2, 3	40	17.5	28	145	15	(2)14 x 20 x 1
ADC1B060A9361A	3	56,000	92.1	2, 2 1/2, 3	40	17.5	28	155	15	(2)14 x 20 x 1
ADC1B080A9421A	3.5	74,000	92.1	2, 2 1/2, 3	40	17.5	28	168	15	(2)14 x 20 x 1
ADC1C100A9481A	4	93,000	92.1	2 1/2, 3	40	21	28	185	20	(2)16 x 20 x 1
ADC1D120A9601A	5	112,000	92.1	2 1/2, 3	40	24.5	28	206	20	(2)16 x 20 x 1

A = (Active) Stock at Customer's Branch  
 NB = (Non-Branch) Non-Stock at Customer's Branch  
 Blank = Non-Stock

# GENSCO



## 90% SPECIAL USE FURNACE ACCESSORIES

### High Altitude Pressure Switch 90%

Product No	Description	Used With	Wt. lbs.
BAYHALT225	1 Switch	AUC080, 100C948, 120C, ADC080, 120C	2
BAYHALT226	1 Switch	AUC, ADC060C	2
BAYHALT227	1 Switch	AUC100C948	2
BAYHALT228	1 Switch	AUC/ADC040C	2
BAYHALT230	1 Switch	AUX/ADX040C,AUX1B040,D11/ADX1B040	2
BAYHALT231	1 Switch	AUX060C,AUX1060C	2
BAYHALT232	1 Switch	AUX-80C,AUX1B080C	2
BAYHALT233	1 Switch	AUX100,120C/ADX080,120C,AUX1C100,D120/ADX1B080,D120	2
BAYHALT234	1 Switch	ADX100C,ADX1C100	2
BAYHALT241	1 Switch	ADX060C,ADX1B060	2
BAYHALT245	2 Switches	ADX/AUX/ADY/AUY060-R	2
BAYHALT246	2 Switches	ADX/AUX/ADY/AUY080,100-R	2
BAYHALT247	2 Switches	ADX/AUX/ADY/AUY120-R	2
BAYHALT248	1 Switch	AUD1/ADD1,AUE1/ADE	2
BAYHALT249	1 Switch	AUD2,AUD-R-K,ADD-R-F,ADD2	2
BAYSWT01AHALTA	1 Switch	AUC1B040,AUC1D100,ADC1B040,AUX1B040,AUX1D100,ADX1B040,ADH1B040,ADH1C085	2
BAYSWT01AMALTB	1 Switch	AUX1	2
BAYSWT02AHALTA	1 Switch	AUC1B060,AUX1B060	2
BAYSWT03AHALTA	1 Switch	AUC1B080,AUX1B080	2
BAYSWT04AHALTA	1 Switch	AUC1C100,AUC1D120,ADC1B080,ADC1C100,ADC1D120,AUX1C100,AUX1D120,ADX1B080,ADX1D120,AUH1B060	2
BAYSWT05AHALTA	1 Switch	ADX1C100,AUH1B080,AUH1C100,ADH1D110	2
BAYSWT06AHALTA	1 Switch	ADC1B060,ADX1B060	2
BAYSWT07AHALTA	1 Switch	AUH3/AUHMB060,ADH3/ADHMB060,AUX2B060,ADX2B060,AUY060R,ADY060R	2
BAYSWT08AHALTA	1 Switch	AUX2B080,AUX2C100,ADX2B080,ADX2C100,AUY120R,ADY120R,AUH2B080,ADH2B080,AUH2C100,ADH2C100,AUH2D120,ADH2D120,AUH3/AUHMD120,ADH3/ADHMD120	2
BAYSWT09AHALTA	1 Switch	AUX2D120,ADX2D120,AUY080R,ADY080R,AUY100R,ADY100R,AUH3/AUHMB080,ADH3/ADHMB080,AUH3/AUHMC100,ADH/ADHM3C100	2
BAYSWT10AHALTA	1 Switch	AUH2B060A,ADH2B060A	2
BAYSWT11AHALTA	1 Switch	AUH1C080	2
BAYSWT12AHALTA	1 Switch	ADH1B065	2

### Dual Fuel Heat Pump Control Kit

Product No	Case Height	Used With	Wt. lbs.
TAYPLUS103A	Heat Pump Control Kit	Gas, LP, Oil and Electric Furnaces	2
TAYSTAT250B	Outdoor Thermostat	TAYPLUS103A for Restricted Mode	2

A = (Active) Stock at Customer's Branch  
 NB = (Non-Branch) Non-Stock at Customer's Branch  
 Blank = Non-Stock



## AMERICAN STANDARD 80% FURNACES

### Platinum 80-Communicating Two Stage ECM Variable Speed

#### Upflow/Horizontal Left or Right Induced Draft - Platinum Series

Product No	Airflow		Output BTuh		Flue Size (in)	Dimensions			Wt. lbs.	Max Fuse	Filter Size
	In Tons	AFUE	Stage2	Stage1		H	W	D			
AUD2B060ACV32A	3	80	48,000	31,200	4	40	17.5	28	136	15	17 x 25 x 1
AUD2B080ACV32A	3	80	64,000	41,600	4	40	17.5	28	142	15	17 x 25 x 1
AUD2C100ACV52A	5	80	79,000	52,000	4	40	21	28	166	20	20 x 25 x 1
AUD2D120ACV52A	5	80	97,000	62,400	4	40	24.5	28	193	20	24 x 25 x 1



#### Downflow/Horizontal Left or Right Induced Draft - Platinum Series

Product No	Airflow		Output BTuh		Flue Size (in)	Dimensions			Wt. lbs.	Max Fuse	Filter Size
	In Tons	AFUE	Stage2	Stage1		H	W	D			
ADD2B060ACV32A	3	80	48,000	31,200	4	40	17.5	28	140	15	(2)14 x 20 x 1
ADD2B080ACV32A	3	80	63,000	41,600	4	40	17.5	28	146	15	(2)14 x 20 x 1
ADD2C100ACV52A	5	80	81,000	52,000	4	40	21	28	166	20	(2)16 x 20 x 1
ADD2D120ACV52A	5	80	95,000	62,400	4	40	24.5	28	197	20	(2)16 x 20 x 1

### Gold 80v-Two Stage ECM Variable Speed

#### Upflow/Horizontal Left or Right Induced Draft - Gold Series

Product No	Airflow		Output BTuh		Flue Size (in)	Dimensions			Wt. lbs.	Max Fuse	Filter Size
	In Tons	AFUE	Stage2	Stage1		H	W	D			
AUD2B060A9V3VB	3	80	48,000	31,200	4	40	17.5	28	136	15	17 x 25 x 1
AUD2B080A9V3VB	3	80	64,000	41,600	4	40	17.5	28	142	15	17 x 25 x 1
AUD2B100A9V3VB	3	80	80,000	52,000	4	40	17.5	28	142	15	17 x 25 x 1
AUD2C080B9V4VB	4	80	64,000	41,600	4	40	21	28	166	20	17 x 25 x 1
AUD2C100A9V5VB	5	80	79,000	52,000	4	40	21	28	166	20	20 x 25 x 1
AUD2C100B9V5VB	5	5	79,000	52,000	4	40	21	28	166	20	20 x 25 x 1
AUD2D120A9V5VB	5	80	97,000	62,400	4	40	24.5	28	193	20	24 x 25 x 1



#### Downflow/Horizontal Left or Right Induced Draft - Gold Series

Product No	Airflow		Output BTuh		Flue Size (in)	Dimensions			Wt. lbs.	Max Fuse	Filter Size
	In Tons	AFUE	Stage2	Stage1		H	W	D			
ADD2B060A9V3VA	3	80	48,000	31,200	4	40	17.5	28	140	15	14 x 20 x 1
ADD2B080A9V3VA	3	80	63,000	41,600	4	40	17.5	28	146	15	14 x 20 x 1
ADD2C100A9V5VA	5	80	81,000	52,000	4	40	21	28	166	20	16 x 20 x 1
ADD2D120A9V5VA	5	80	95,000	62,400	4	40	24.5	28	197	20	16 x 20 x 1

A = (Active) Stock at Customer's Branch  
 NB = (Non-Branch) Non-Stock at Customer's Branch  
 Blank = Non-Stock





## AMERICAN STANDARD 80% FURNACES

### Gold 80-Two Stage

#### Upflow/Horizontal, Left or Right Induced Draft - Gold Series

Product No	Airflow		Output BTuh		Flue Size (in)	Dimensions			Wt. lbs.	Max Fuse	Filter Size
	In Tons	AFUE	Stage2	Stage1		H	W	D			
AUD2A060A9362A	3	80	47,000	31,200	4	40	14.5	28	127	15	17 x 25 x 1
AUD2B080A9362A	3	80	63,000	41,600	4	40	17.5	28	142	15	17 x 25 x 1
AUD2B080A9482A	4	80	63,000	41,600	4	40	17.5	28	142	15	17 x 25 x 1
AUD2B100A9362A	3	80	79,000	52,000	4	40	17.5	28	151	15	17 x 25 x 1
AUD2C100A9482A	4	80	79,000	52,000	4	40	21	28	162	15	20 x 25 x 1
AUD2D120A9602A	5	80	95,000	62,400	4	40	24.5	28	186	20	24 x 25 x 1



#### Downflow/Horizontal Left or Right Induced Draft - Gold Series

Product No	Airflow		Output BTuh		Flue Size (in)	Dimensions			Wt. lbs.	Max Fuse	Filter Size
	In Tons	AFUE	Stage2	Stage1		H	W	D			
ADD2A060A9362A	3	80	47,000	31,200	4	40	14.5	28	135	15	14 x 20 x 1
ADD2B060A9362A	3	80	48,000	31,200	4	40	17.5	28	140	15	14 x 20 x 1
ADD2B080A9362A	3	80	64,000	41,600	4	40	17.5	28	152	15	14 x 20 x 1
ADD2B100A9482A	4	80	79,000	52,000	4	40	17.5	28	157	15	14 x 20 x 1
ADD2C100A9482A	4	80	79,000	52,000	4	40	21	28	166	15	16 x 20 x 1

### Silver 80 - Single Stage

#### Upflow/Horizontal Left or Right Induced Draft - Silver Series

Product No	Power Supply	Airflow	Nominal	AFUE	Flue Size (in)	Dimensions			Wt. lbs.	Max Fuse	Filter Size
		In Tons	Output (Btuh)			H	W	D			
AUD1A040A9241A	115/1/60	2	32,000	80	4	40	14.5	28	119	15	17 x 25 x 1
AUD1A060A9241A	115/1/60	2	47,000	80	4	40	14.5	28	124	15	17 x 25 x 1
AUD1B060A9361A	115/1/60	3	47,000	80	4	40	17.5	28	132	15	17 x 25 x 1
AUD1B080A9241A	115/1/60	2	64,000	80	4	40	17.5	28	139	15	17 x 25 x 1
AUD1B080A9361A	115/1/60	3	63,000	80	4	40	17.5	28	142	15	17 x 25 x 1
AUD1B080A9481A	115/1/60	4	64,000	80	4	40	17.5	28	142	15	17 x 25 x 1
AUD1B100A9361A	115/1/60	3	79,000	80	4	40	17.5	28	151	15	17 x 25 x 1
AUD1C100A9481A	115/1/60	4	79,000	80	4	40	21	28	162	15	20 x 25 x 1
AUD1C100A9601A	115/1/60	5	79,000	80	4	40	21	28	162	20	20 x 25 x 1
AUD1C120A9541A	115/1/60	5	96,000	80	4	40	21	28	176	20	20 x 25 x 1
AUD1D120A9601A	115/1/60	5	96,000	80	4	40	24.5	28	186	20	24 x 25 x 1
AUD1D140A9601A	115/1/60	5	111,000	80	4	40	24.5	28	193	20	24 x 25 x 1



A = (Active) Stock at Customer's Branch  
 NB = (Non-Branch) Non-Stock at Customer's Branch  
 Blank = Non-Stock







## AMERICAN STANDARD 80% FURNACES

### Silver 80 - Single Stage

#### Downflow/Horizontal Left or Right Induced Draft - Silver Series

Product No	Power Supply	Airflow		AFUE	Flue Size (in)	Dimensions			Wt. lbs.	Max Fuse	Filter Size
		In Tons	Nominal Output (Btuh)			H	W	D			
ADD1A060A9241A	115/1/60	2	48,000	80	4	40	14.5	28	129	15	14 x 20 x 1
ADD1B060A9361A	115/1/60	3	48,000	80	4	40	17.5	28	134	15	14 x 20 x 1
ADD1B080A9361A	115/1/60	3	64,000	80	4	40	17.5	28	146	15	14 x 20 x 1
ADD1B080A9451A	115/1/60	4	64,000	80	4	40	17.5	28	146	15	14 x 20 x 1
ADD1B100A9451A	115/1/60	4	80,000	80	4	40	17.5	28	156	15	14 x 20 x 1
ADD1C100A9481A	115/1/60	4	80,000	80	4	40	21	28	166	15	16 x 20 x 1
ADD1C100A9541A	115/1/60	5	81,000	80	4	40	21	28	167	20	16 x 20 x 1
ADD1D120A9601A	115/1/60	5	96,000	80	4	40	24.5	28	189	20	16 x 20 x 1

### American Standard 80 - "Builder Model"

#### Upflow/Horizontal Left or Right Induced Draft

Product No	Airflow		AFUE	Flue Size (in)	Dimensions			Wt. lbs.	Max Fuse	Filter Size
	In Tons	Nominal Output (Btuh)			H	W	D			
AUE1A040A9241A	2	31,000	80	4	40	14.5	28	119	15	16 x 25 x 1
AUE1A060A9361A	3	47,000	80	4	40	14.5	28	127	15	16 x 25 x 1
AUE1B060A9361A	3	47,000	80	4	40	17.5	28	132	15	17 x 25 x 1
AUE1B080A9361A	3	63,000	80	4	40	17.5	28	142	15	17 x 25 x 1
AUE1B080A9481A	4	64,000	80	4	40	17.5	28	142	15	17 x 25 x 1
AUE1C100A9481A	4	79,000	80	4	40	21	28	162	15	20 x 25 x 1
AUE1C100A9601A	5	79,000	80	4	40	21	28	162	20	20 x 25 x 1



#### Downflow/Horizontal Left or Right Induced Draft

Product No	Airflow		AFUE	Flue Size (in)	Dimensions			Wt. lbs.	Max Fuse	Filter Size
	In Tons	Nominal Output (Btuh)			H	W	D			
ADE1A060A9361A	3	48,000	80	4	40	14.5	28	129	15	14 x 20 x 1
ADE1B060A9361A	3	48,000	80	4	40	17.5	28	134	15	14 x 20 x 1
ADE1B080A9451A	4	64,000	80	4	40	17.5	28	146	15	14 x 20 x 1
ADE1B100A9451A	4	80,000	80	4	40	17.5	28	156	15	14 x 20 x 1
ADE1C100A9601A	5	81,000	80	4	40	21	28	167	20	16 x 20 x 1
ADE1D120A9601A	5	96,000	80	4	40	24.5	28	189	20	16 x 20 x 1

A = (Active) Stock at Customer's Branch  
 NB = (Non-Branch) Non-Stock at Customer's Branch  
 Blank = Non-Stock





## AMERICAN STANDARD 80% FURNACES

### Silver SI-High Efficiency Oil Furnaces - "Builder Model"

Product No	Airflow	Nominal	ICS	Flue Size	Dimensions			Wt.
	In Tons	Output (Btuh)	AFUE	(in)	H	W	D	Ibs.
TDF1M087A936SA	3	87,000	84.8	6	22.25	61.25	22.25	280
TDF1M087A948SA	4	87,000	82.6	6	22.25	61.25	22.25	280
TLF1M087A936SA	3	87,000	82.9	6	41.5	22.25	47	300
TLF1M087A948SA	4	87,000	82.7	6	41.5	22.25	47	300
TLR1M087A936SA	3	87,000	85	6	41.5	22.25	47	300



A = (Active) Stock at Customer's Branch  
 NB = (Non-Branch) Non-Stock at Customer's Branch  
 Blank = Non-Stock

# GENSCO



## AMERICAN STANDARD AIR CONDITIONERS

### AccuComfort Variable Speed Platinum 20

#### R-410A Split System Platinum Series AccuComfort Variable Speed

Product No	Power Supply	Nom. Cap. Cooling (Btuh)	Dimensions			Wt.		Line Size (Gas)	Line Size (Liquid)	MCA	Max Fuse
			H	W	D	lbs.	Sound Rating				
4A7V0024A1000A	208/230/1/60	24,000	45	37	34	375	57/66	3/4	3/8	14	20
4A7V0036B1000A	208/230/1/60	36,000	45	37	34	375	59/70	3/4	3/8	19	30
4A7V0048A1000A	208/230/1/60	48,000	45	37	34	460	57/74	7/8	3/8	26	40
4A7V0060A1000A	208/230/1/60	60,000	45	37	34	460	62/75	7/8	3/8	31	50



### AccuComfort Variable Speed Platinum 18

#### R-410A Split System Platinum Series AccuComfort Variable Speed

Product No	Power Supply	Nom. Cap. Cooling (Btuh)	Dimensions			Wt.		Line Size (Gas)	Line Size (Liquid)	MCA	Max Fuse
			H	W	D	lbs.	Sound Rating				
4A7V8024A1000A	208/230/1/60	24,000	46	30.1	33	217	57/66	5/8	3/8	17	20
4A7V8036A1000B	208/230/1/60	36,000	46	30.1	33	228	55/70	3/4	3/8	18	35
4A7V8048A1000B	208/230/1/60	48,000	46.4	35.1	38.7	270	57/74	7/8	3/8	23	45
4A7V8060A1000B	208/230/1/60	60,000	51	35.1	38.7	284	62/75	1 1/8	3/8	27	60



### Gold 17

#### R-410A Split System Two Stage

Product No	Power Supply	Nom. Cap. Cooling (Btuh)	Dimensions			Wt.		Line Size (Gas)	Line Size (Liquid)	MCA	Max Fuse
			H	W	D	lbs.	Sound Rating				
4A7A7024A1000B	208/230/1/60	24,000	41	37	34	276	72	5/8	3/8	18	20
4A7A7036A1000B	208/230/1/60	36,000	45	37	34	283	72	3/4	3/8	24	35
4A7A7048A1000B	208/230/1/60	48,000	45	37	34	308	73	7/8	3/8	28	45
4A7A7060A1000B	208/230/1/60	60,000	45	37	34	312	74	1-1/8	3/8	37	60



A = (Active) Stock at Customer's Branch  
 NB = (Non-Branch) Non-Stock at Customer's Branch  
 Blank = Non-Stock





## AMERICAN STANDARD AIR CONDITIONERS

### Silver 16

#### R-410A Split System Single Stage - Silver Series

Product No	Power Supply	Nom. Cap. Cooling (Btuh)	Dimensions			Wt.		Line Size (Gas)	Line Size (Liquid)	MCA	Max Fuse
			H	W	D	lbs.	Sound Rating				
4A7A6024H1000A	208/230/1/60	24,000	29	33	30	201	73	3/4	3/8	9	15
4A7A6030H1000A	208/230/1/60	30,000	33	37	34	234	73	3/4	3/8	12	20
4A7A6036H1000A	208/230/1/60	36,000	37	37	34	228	71	3/4	3/8	19	30
4A7A6042H1000A	208/230/1/60	42,000	41	37	34	272	72	7/8	3/8	23	40
4A7A6048H1000K	208/230/1/60	48,000	45	37	34	282	72	7/8	3/8	26	45
4A7A6061J1000A	208/230/1/60	60,000	45	37	34	285	74	1 1/8	3/8	34	60



### Silver 14

#### R-410A Split System Single Stage - Silver Series

Product No	Power Supply	Nom. Cap. Cooling (Btuh)	Dimensions			Wt.		Line Size (Gas)	Line Size (Liquid)	MCA	Max Fuse
			H	W	D	lbs.	Sound Rating				
4A7A4024L1000A	208/230/1/60	24,000	30.1	26.7	30	153	72	3/4	3/8	14	25
4A7A4030L1000A	208/230/1/60	30,000	34	30.1	33	183	73	3/4	3/8	17	25
4A7A4036L1000A	208/230/1/60	36,000	38	30.1	33	183	73	3/4	3/8	18	30
4A7A4042L1000A	208/230/1/60	42,000	34.4	35.1	38.7	216	72	7/8	3/8	35	35
4A7A4048L1000A	208/230/1/60	48,000	34.4	35.1	38.7	212	72	7/8	3/8	40	40
4A7A4060L1000A	208/230/1/60	56,000	37	37	34	246	72	7/8	3/8	31	50



### Silver 13

#### R-410A Split System Single Stage - Silver Series

Product No	Power Supply	Nom. Cap. Cooling (Btuh)	Dimensions			Wt.		Line Size (Gas)	Line Size (Liquid)	MCA	Max Fuse
			H	W	D	lbs.	Sound Rating				
4A7A3018H1000N	208/230/1/60	17,000	29	29	26	153	72	5/8	3/8	12	20
4A7A3024H1000N	208/230/1/60	23,000	29	33	30	169	74	3/4	3/8	17	25
4A7A3030G1000N	208/230/1/60	28,500	29	33	30	180	71	3/4	3/8	18	30
4A7A3036G1000N	208/230/1/60	34,500	33	33	30	197	74	3/4	3/8	22	35
4A7A3042D1000N	208/230/1/60	40,500	29	37	34	228	74	3/4	3/8	26	45
4A7A3048D1000N	208/230/1/60	46,500	29	37	34	235	75	7/8	3/8	28	50
4A7A3060D1000N	208/230/1/60	58,500	37	37	34	261	75	7/8	3/8	35	60



A = (Active) Stock at Customer's Branch  
 NB = (Non-Branch) Non-Stock at Customer's Branch  
 Blank = Non-Stock





## AMERICAN STANDARD AIR CONDITIONERS

### Silver 13 R-22 Dry Ship

#### Dry R-22 Split System - Single Stage Dry Ship

Product No	Power Supply	Nom. Cap. Cooling (Btuh)	Dimensions			Wt.		Line Size (Gas)	Line Size (Liquid)	MCA	Max Fuse
			H	W	D	lbs.	Sound Rating				
AMS2TTB3018A1000N	208/230/1/60	17,000	26	29	29	182	76	5/8	1/4	8	15
AMS2TTB3024A1000N	208/230/1/60	23,000	33	29	29	195	78	3/4	5/16	12	20
AMS2TTB3030A1000N	208/230/1/60	28,500	33	33	33	225	78	3/4	5/16	13	20
AMS2TTB3036A1000N	208/230/1/60	34,500	33	33	33	205	76	7/8	3/8	21	35
AMS2TTB3042A1000N	208/230/1/60	40,500	33	37	37	283	79	7/8	3/8	21	35
AMS2TTB3048A1000N	208/230/1/60	46,500	41	37	37	307	79	1 1/8	3/8	25	40
AMS2TTB3060A1000N	208/230/1/60	58,500	41	37	37	280	79	1 1/8	3/8	33	50



A = (Active) Stock at Customer's Branch  
 NB = (Non-Branch) Non-Stock at Customer's Branch  
 Blank = Non-Stock

# GENSCO



## AMERICAN STANDARD HEAT PUMPS

### AccuComfort Platinum 20

#### R-410A Platinum Series Variable Speed Inverter

Product No	Power Supply	Nom. Cap. Cooling (Btuh)	Dimensions			Wt.		Line Size (Gas)	Line Size (Liquid)	MCA	Max Fuse
			H	W	D	lbs.	Sound Rating				
4A6V0024A1000B	208/230/1/60	24,000	46	30.1	33	216	60/69	5/8	3/8	17	25
4A6V0036A1000B	208/230/1/60	36,000	46.4	35.1	38.7	254	60/72	3/4	3/8	26	40
4A6V0048A1000B	208/230/1/60	48,000	46.4	35.1	38.7	266	62/76	7/8	3/8	29	45
4A6V0060A1000B	208/230/1/60	60,000	51	35.1	38.7	276	61/74	1 1/8	3/8	37	50



### AccuComfort Platinum 18

#### R-410A Platinum Series Variable Speed Inverter

Product No	Power Supply	Nom. Cap. Cooling (Btuh)	Dimensions			Wt.		Line Size (Gas)	Line Size (Liquid)	MCA	Max Fuse
			H	W	D	lbs.	Sound Rating				
4A6V8024A1000B	208/230/1/60	24,000	46	30.1	33	216	60/69	5/8	3/8	17	25
4A6V8036A1000B	208/230/1/60	36,000	46	30.1	33	229	60/74	3/4	3/8	25	35
4A6V8037A1000B	208/230/1/60	36,000	46.4	35.1	38.7	254	60/74	3/4	3/8	26	40
4A6V8048A1000B	208/230/1/60	48,000	46.4	35.1	38.7	259	62/76	7/8	3/8	28	40
4A6V8049A1000B	208/230/1/60	48,000	46.4	35.1	38.7	266	62/76	7/8	3/8	29	45
4A6V8060A1000B	208/230/1/60	60,000	51	35.1	38.7	276	61/74	1 1/8	3/8	37	50



### Gold 17

#### R-410A Split System Two Stage Heat Pump - Gold Series

Product No	Power Supply	Nom. Cap. Cooling (Btuh)	Dimensions			Wt.		Line Size (Gas)	Line Size (Liquid)	MCA	Max Fuse
			H	W	D	lbs.	Sound Rating				
4A6H7024A1000C	208/230/1/60	24,000	41	37	34	272	72	5/8	3/8	15	25
4A6H7036B1000C	208/230/1/60	36,000	45	37	34	274	72	3/4	3/8	22	35
4A6H7048A1000C	208/230/1/60	48,000	45	37	34	329	73	7/8	3/8	28	45
4A6H7060A1000C	208/230/1/60	60,000	45	37	34	330	74	1 1/8	3/8	41	60



A = (Active) Stock at Customer's Branch  
 NB = (Non-Branch) Non-Stock at Customer's Branch  
 Blank = Non-Stock





## AMERICAN STANDARD HEAT PUMPS

### Silver 16

#### R-410A Split System Single Stage Heat Pump

Product No	Power Supply	Nom. Cap. Cooling (Btuh)	Dimensions			Wt.		Line Size (Gas)	Line Size (Liquid)	MCA	Max Fuse
			H	W	D	lbs.	Sound Rating				
4A6H6024H1000A	208/230/1/60	24,200	33	33	30	208	71	3/4	3/8	14	25
4A6H6030H1000A	208/230/1/60	28,600	37	37	34	245	70	3/4	3/8	17	25
4A6H6036H1000A	208/230/1/60	34,800	37	37	34	246	70	7/8	3/8	18	30
4A6H6042H1000A	208/230/1/60	41,000	45	37	34	277	72	7/8	3/8	22	35
4A6H6048H1000A	208/230/1/60	47,000	45	37	34	300	72	7/8	3/8	26	40
4A6H6060H1000A	208/230/1/60	55,000	45	37	34	301	72	1 1/8	3/8	31	50



### Silver 15

#### R-410A Split System Single Stage Heat Pump - Silver Series

Product No	Power Supply	Nom. Cap. Cooling (Btuh)	Dimensions			Wt.		Line Size (Gas)	MCA	Max Fuse
			H	W	D	lbs.	Sound Rating			
4A6H5018G1000A	208/230/1/60	18,000	29	33	30	204	75	5/8	9	15
4A6H5024G1000C	208/230/1/60	24,000	33	33	30	236	75	5/8	11	15
4A6H5030G1000C	208/230/1/60	30,000	33	37	34	273	75	3/4	15	25
4A6H5036G1000C	208/230/1/60	36,000	33	37	34	261	75	3/4	18	30
4A6H5042G1000C	208/230/1/60	41,500	37	37	34	277	75	3/4	23	40
4A6H5049E1000C	208/230/1/60	48,000	45	37	34	331	75	7/8	28	50
4A6H5061E1000C	208/230/1/60	60,000	45	37	34	332	75	1 1/8	36	60



### Silver 14

#### Silver Series Split System Heat Pump

Product No	Power Supply	Nom. Cap. Cooling (Btuh)	Dimensions			Wt.		Line Size (Gas)	Line Size (Liquid)	MCA	Max Fuse
			H	W	D	lbs.	Sound Rating				
4A6H4024E1000B	208/230/1/60	24,000	38	30.1	33	236	76	5/8	3/8	11	15
4A6H4030G1000A	208/230/1/60	30,000	38	30.1	33	236	76	5/8	3/8	11	15
4A6H4036D1000A	208/230/1/60	36,000	38.4	35.1	38.7	229	76	3/4	3/8	22	35
4A6H4042G1000A	208/230/1/60	42,000	38.4	35.1	38.7	253	76	3/4	3/8	26	45
4A6H4048G1000A	208/230/1/60	48,000	42.4	35.1	38.7	269	76	7/8	3/8	28	50
4A6H4060D1000A	208/230/1/60	60,000	51	35.1	38.7	332	76	1-1/8	3/8	34	60



A = (Active) Stock at Customer's Branch  
 NB = (Non-Branch) Non-Stock at Customer's Branch  
 Blank = Non-Stock





## AMERICAN STANDARD HEAT PUMPS

### Silver XI - 14 SEER Split System Heat Pump - "Builder Model"

#### R-410A Split System Single Stage Heat Pump - \*\*PHASING OUT\*\*

Product No	Power Supply	Description
4A6B4024G1000A	208/230/1/60	PHASED OUT
4A6B4036G1000A	208/230/1/60	PHASED OUT



A = (Active) Stock at Customer's Branch  
 NB = (Non-Branch) Non-Stock at Customer's Branch  
 Blank = Non-Stock







AMERICAN STANDARD AIR HANDLERS / HEATERS

Forefront Platinum TAM8 - Multi-Position

AccuLink™ Variable Speed R-410A - Platinum Series

Product No	Nom. Cap. Cooling (Btuh)	Dimensions			Wt. lbs.	Line Size (Gas)	Line Size (Liquid)	Filter Size	Supply Opening	Return Opening
		H	W	D						
AMSTAM8C0B30V21CB	30,000	55.7	21.3	21.8	150	3/4	3/8	20 x 20 x 1	18.4 x 14.35	18.4 x 17.15
AMSTAM8C0C36V31EA	36,000	56.9	23.5	21.8	157	7/8	3/8	20 x 20 x 1	20.5 x 14.35	20.5 x 17.15
AMSTAM8C0C42V31CB	42,000	56.9	23.5	21.8	162	7/8	3/8	20 x 20 x 1	20.5 x 14.35	20.5 x 17.15
AMSTAM8C0C48V41CB	48,000	61.7	23.5	21.8	174	7/8	3/8	20 x 20 x 1	20.5 x 14.35	20.5 x 17.15
AMSTAM8C0C60V51CB	60,000	61.7	23.5	21.8	175	7/8	3/8	20 x 20 x 1	20.5 x 14.35	20.5 x 17.15
AMSTAM8C0C60V51CB	60,000	61.7	23.5	21.8	175	7/8	3/8	20 x 20 x 1	20.5 x 14.35	20.5 x 17.15



Forefront Platinum TAM7 - Multi-Position

Variable Speed R-410A - Platinum Series

Product No	Nom. Cap. Cooling (Btuh)	Dimensions			Wt. lbs.	Line Size (Gas)	Line Size (Liquid)	Filter Size	Supply Opening	Return Opening
		H	W	D						
AMSTAM7A0A24H21EA	24,000	49.9	17.5	21.8	126	3/4	3/8	16 x 20 x 1	14.5 x 14.35	14.5 x 17.15
AMSTAM7A0B30H21SD	30,000	55.7	21.3	21.8	150	3/4	3/8	20 x 20 x 1	18.4 x 14.35	18.4 x 17.15
AMSTAM7A0C36H31EA	36,000	56.9	23.5	21.8	157	7/8	3/8	20 x 20 x 1	20.5 x 14.35	20.5 x 17.15
AMSTAM7A0C42H31EA	42,000	56.9	23.5	21.8	162	7/8	3/8	20 x 20 x 1	20.5 x 14.35	20.5 x 17.15
AMSTAM7A0C48H41EA	48,000	61.7	23.5	21.8	174	7/8	3/8	20 x 20 x 1	20.5 x 14.35	20.5 x 17.15
AMSTAM7B0C60H51EA	60,000	61.7	23.5	21.8	175	7/8	3/8	20 x 20 x 1	20.5 x 14.35	20.5 x 17.15



A = (Active) Stock at Customer's Branch  
 NB = (Non-Branch) Non-Stock at Customer's Branch  
 Blank = Non-Stock





## AMERICAN STANDARD AIR HANDLERS / HEATERS

### Forefront Gold GAM5

#### Multi-Speed High Efficiency Motor 200-230/1/60 - Gold Series

Product No	Nom. Cap. Cooling (Btuh)	Dimensions			Wt. lbs.	Line Size (Gas)	Line Size (Liquid)	Filter Size	Supply Opening	Return Opening
		H	W	D						
AMSGAM5B0A24M21EA	24,000	49.9	17.5	21.8	126	3/4	3/8	16 x 20 x 1	14.5 x 14.35	14.5 x 17.15
AMSGAM5B0B30M21EA	30,000	51.5	21.3	21.8	140	3/4	3/8	20 x 20 x 1	18.4 x 14.35	18.4 x 17.15
AMSGAM5B0B36M31SB	36,000	55.7	21.3	21.8	150	7/8	3/8	20 x 20 x 1	18.4 x 14.35	18.4 x 17.15
AMSGAM5B0C42M31EA	42,000	56.9	23.5	21.8	163	7/8	3/8	22 x 20 x 1	20.5 x 14.35	20.5 x 17.15
AMSGAM5B0C48M41EA	48,000	61.7	23.5	21.8	176	7/8	3/8	22 x 20 x 1	20.5 x 14.35	20.5 x 17.15
AMSGAM5B0C60M51SB	60,000	61.7	23.5	21.8	180	7/8	3/8	22 x 20 x 1	20.5 x 14.35	20.5 x 17.15



### Forefront Gold GAM2

#### Multi-Speed PSC Motor 200-230/1/60 - Gold Series **\*\*PHASING OUT\*\***

Product No	Nom. Cap. Cooling (Btuh)	Dimensions			Wt. lbs.	Line Size (Gas)	Line Size (Liquid)	Filter Size	Supply Opening	Return Opening
		H	W	D						
AMSGAM2A0A24S21SE	24,000	49.9	17.5	21.8	126	3/4	3/8	16 x 20 x 1	14.5 x 14.35	14.5 x 14.35
AMSGAM2A0A30S21SE	30,000	49.9	17.5	21.8	127	3/4	3/8	16 x 20 x 1	14.5 x 17.15	14.5 x 17.15
AMSGAM2A0A36S31SE	36,000	49.9	17.5	21.8	131	3/4	3/8	16 x 20 x 1	14.5 x 17.15	14.5 x 17.15
AMSGAM2A0B42S31SE	42,000	55.7	21.3	21.8	144	7/8	3/8	20 x 20 x 1	18.4 x 14.35	18.4 x 14.35
AMSGAM2A0C48S41SE	48,000	56.9	23.5	21.8	155	7/8	3/8	22 x 20 x 1	20.5 x 14.35	20.5 x 14.35
AMSGAM2A0C60S51SE	60,000	61.7	23.5	21.8	171	7/8	3/8	22 x 20 x 1	20.5 x 14.35	20.5 x 14.35



A = (Active) Stock at Customer's Branch  
 NB = (Non-Branch) Non-Stock at Customer's Branch  
 Blank = Non-Stock





## AMERICAN STANDARD AIR HANDLERS / HEATERS

### Silver TEM6

#### Variable Speed Convertible Air Handler - Series

Product No	Power Supply	Nom. Cap. Cooling (Btuh)	Dimensions			Wt.		
			H	W	D	Ibs.	Line Size (Gas)	Line Size (Liquid)
AMSTEM6A0B24H21SA	208/230/1/60	24,000	46.75	18.5	21.13	126	3/4	3/8
AMSTEM6A0B30H21SA	208/230/1/60	30,000	46.75	18.5	21.13	126	3/4	3/8
AMSTEM6A0C36H31SA	208/230/1/60	36,000	51.37	23.5	21.13	155	7/8	3/8
AMSTEM6A0C42H41SA	208/230/1/60	42,000	51.37	23.5	21.13	155	7/8	3/8
AMSTEM6A0D48H41SA	208/230/1/60	48,000	53.87	26.5	21.13	181	7/8	3/8
AMSTEM6A0D60H51SA	208/230/1/60	60,000	53.87	26.5	21.13	181	7/8	3/8



### Silver TEM4

#### Convertible Air Handler - Silver Series

Product No	Power Supply	Nom. Cap. Cooling (Btuh)	Dimensions			Wt.		
			H	W	D	Ibs.	Line Size (Gas)	Line Size (Liquid)
AMSTEM4A0B18S21SA	208/230/1/60	18,000	45.02	18.5	21.13	116	3/4	3/8
AMSTEM4A0B24S21SA	208/230/1/60	24,000	45.02	18.5	21.13	116	3/4	3/8
AMSTEM4A0B30S31SA	208/230/1/60	30,000	45.02	18.5	21.13	116	3/4	3/8
AMSTEM4A0C36S41SA	208/230/1/60	36,000	51.27	23.5	21.13	145	7/8	3/8
AMSTEM4A0C42S41SA	208/230/1/60	42,000	51.27	23.5	21.13	145	7/8	3/8
AMSTEM4A0C48S41SA	208/230/1/60	48,000	51.27	23.5	21.13	145	7/8	3/8
AMSTEM4A0C60S51SA	208/230/1/60	60,000	51.27	23.5	21.13	145	7/8	3/8



A = (Active) Stock at Customer's Branch  
 NB = (Non-Branch) Non-Stock at Customer's Branch  
 Blank = Non-Stock





## AMERICAN STANDARD AIR HANDLERS / HEATERS

### Silver TEM3

#### R-410A Convertible Air Handler 200-230/1/60 - Silver Series-**\*\*PHASING OUT\*\***

Product No	Nom. Cap. Cooling (Btuh)	Dimensions			Wt.		Line Size (Gas)	Line Size (Liquid)	Supply Opening	Return Opening
		H	W	D	lbs.					
AMSTEM3A0B24S21SA	24,000	45.02	18.5	21.13	116		3/4	3/8	16.5 x 12.15	16.75 x 18.75
AMSTEM3A0B30S31SA	30,000	45.02	18.5	21.13	116		3/4	3/8	16.5 x 12.15	16.75 x 18.75
AMSTEM3A0B36S31SA	36,000	45.02	18.5	21.13	116		3/4	3/8	16.5 x 12.15	16.75 x 18.75
AMSTEM3A0C42S41SA	42,000	51.27	23.5	21.13	145		7/8	3/8	21.5 x 12.15	21.75 x 18.75
AMSTEM3A0C48S41SA	48,000	51.27	23.5	21.13	145		7/8	3/8	21.5 x 12.15	21.75 x 18.75



### Heaters for TEM 4 Split System Air Handlers

Product No	Capacity-240 Volts (Btuh)	Capacity-208 Volts (Btuh)	Voltage	Control Stages	Number of Heater Racks	Number of Circuits	Heater Amps per Circuit - 208 Volts	Heater Amps per Circuit (240 Volts)
BAYHTR1505BRKC	16,400	12,300	208/240/1/6 0	1	1	1	17.3	20
BAYHTR1510BRKC	32,800	24,600	208/240/1/6 0	1	2	1	34.6	40
BAYHTR1515BRKB	49,100	36,900	208/240/1/6 0	2	3	2	51.9	60
BAYHTR1520BRKB	65,500	49,200	208/240/1/6 0	2	4	2		80



### Heaters for TEM 6 Split System Air Handlers

Product No	Capacity-240 Volts (Btuh)	Capacity-208 Volts (Btuh)	Voltage	Control Stages	Number of Heater Racks	Number of Circuits	Heater Amps per Circuit (240 Volts)
BAYHTR1505BRKC	16,400	12,300	208/240/1/60	1	1	1	20
BAYHTR1510BRKC	32,800	24,600	208/240/1/60	1	2	1	40
BAYHTR1516BRKA	49,200	36,900	208/240/1/60	2	3	2	60
BAYHTR1525BRKA	81,900	61,600	208/240/1/60	2	4	2	100



A = (Active) Stock at Customer's Branch  
 NB = (Non-Branch) Non-Stock at Customer's Branch  
 Blank = Non-Stock

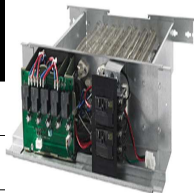




## AMERICAN STANDARD AIR HANDLERS / HEATERS

### Heaters for GAM 5/2, Series Gold XI & SI+ Air Handlers

Product No	Capacity-240 Volts (Btuh)	Capacity-208 Volts (Btuh)	Voltage	Control Stages	Number of Heater Racks	Number of Circuits	Heater Amps per Circuit - 208 Volts	Heater Amps per Circuit (240 Volts)
BAYEAC05BK1BA	16,400	12,300	208/240/1/6 10	1	1	1	17.3	20
BAYEAC08BK1AB	26,200	19,700	208/240/1/6 20	2	1	1	27.7	32
BAYEAC10BK1BA	32,800	24,600	208/240/1/6 20	2	1	1	34.6	40
BAYEABC15BK1BA	49,200	36,900	208/240/1/6 30	3	2	2	34.6/17.3	40/20
BAYEABC20BK1BA	65,600	49,200	208/240/1/6 30	4	2	2	34.6/34.6	40/40
BAYEACC25BK1AA	82,000	61,500	208/240/1/6 30	5	3	3	34.6/34.6/17.3	40/40/20



### Heaters for TAM7/8, Platinum ZV & XV Air Handlers

Product No	Capacity-240 Volts (Btuh)	Capacity-208 Volts (Btuh)	Voltage	Control Stages	Number of Heater Racks	Number of Circuits	Heater Amps per Circuit - 208 Volts	Heater Amps per Circuit (240 Volts)
BAYEVAC05BK1AB	16,400	12,300	208/240/1/6 10	1	1	1	17.3	20
BAYEVAC08BK1BA	26,000	19,700	208/240/1/6 20	2	1	1	27.7	32
BAYEVAC10BK1BA	32,800	24,600	208/240/1/6 20	2	1	1	34.6	40
BAYEVBC15BK1BA	49,200	36,900	208/240/1/6 30	3	2	2	34.6/17.3	40/20
BAYEVBC20BK1BA	65,600	49,200	208/240/1/6 30	4	2	2	34.6/34.6	40/40
BAYEVCC25BK1BA	82,000	61,500	208/240/1/6 30	5	3	3	34.6/34.6/17.3	40/40/20



### Heaters for TECs - \*\*PHASING OUT\*\*

Product No	Capacity-240 Volts (Btuh)	Capacity-208 Volts (Btuh)	Voltage	Control Stages	Heater Amps per Circuit - 208 Volts	Heater Amps per Circuit (240 Volts)
BAYHTR1408BRKC	26,200	19,700	208/240/1/60	1	27.7	32
BAYHTR1425BRKC	85,200	63,900	208/240/1/60	3	38.1/34.6/17.3	44/40/20



A = (Active) Stock at Customer's Branch  
 NB = (Non-Branch) Non-Stock at Customer's Branch  
 Blank = Non-Stock





**AMS COILS \*\*PRICING SHOWN FOR STOCKED OR NON-STOCK\*\***

**Split System - Cased Coils**

**High Efficiency - Upflow/Downflow/Horizontal Left or Right**

Product No	Dimensions			Line Size (Gas)	Line Size (Liquid)	Coil Type	Refrigerant Control
	H	W	D				
4TXCA002DS3HCA	17.5	14.5	21.5	3/4	3/8	A	TXVNB
4TXCB003DS3HCA	17.5	17.5	21.5	3/4	3/8	A	TXVNB
4TXCB004DS3HCA	22.5	17.5	21.5	7/8	3/8	A	TXVNB
4TXCB006DS3HCA	26.9	17.5	21.5	7/8	3/8	A	TXVNB
4TXCC005DS3HCA	22.5	21	21.5	7/8	3/8	A	TXVNB
4TXCC007DS3HCA	26.9	21	21.5	7/8	3/8	A	TXVNB
4TXCC009DS3HCA	30.7	21	21.5	7/8	3/8	A	TXVNB
4TXCD008DS3HCA	26.9	24.5	21.5	7/8	3/8	A	TXVNB
4TXCD010DS3HCA	30.7	24.5	21.5	7/8	3/8	A	TXVNB



**High Efficiency - Upflow/Downflow/Horizontal Left or Right \*\*PHASING OUT\*\***

Product No	Dimensions			Line Size (Gas)	Line Size (Liquid)	Coil Type	Refrigerant Control
	H	W	D				
4TXCB003CC3HCB	22.6	17.5	21.5	5/8	3/8	A	TXVNB
4TXCB004CC3HCB	26.9	17.5	21.5	3/4	3/8	A	TXVNB
4TXCC006CC3HCA	22.6	21	21.5	5/8	3/8	A	TXVNB
4TXCC007CC3HCB	26.9	21	21.5	3/4	3/8	A	TXVNB
4TXCC008CC3HCC	30.1	21	21.5	3/4	3/8	A	TXVNB
4TXCD010CC3HCC	30.7	24.6	21.5	3/4	3/8	A	TXVNB



**Split System - Cased Coils for Variable Speed Outdoor Units**

**High Efficiency- Downflow/Horizontal-Right Only \*\*PHASING OUT\*\***

Product No	Dimensions			Line Size (Gas)	Line Size (Liquid)	Coil Type	Refrigerant Control
	H	W	D				
4NXCB003AS3HRA	22.5	17.5	21.5	3/4	3/8	A	TXVNB
4NXCB004AS3HRA	26.8	17.5	21.5	3/4	3/8	A	TXVNB
4NXCC005AS3HRA	26.8	21.0	21.5	3/4	3/8	A	TXVNB
4NXCC008AS3HRB	30.0	21.0	21.5	3/4	3/8	A	TXVNB
4NXCD009AS3HRB	30.0	24.5	21.5	3/4	3/8	A	TXVNB



A = (Active) Stock at Customer's Branch  
 NB = (Non-Branch) Non-Stock at Customer's Branch  
 Blank = Non-Stock



**AMS COILS \*\*PRICING SHOWN FOR STOCKED OR NON-STOCK\*\***

**Split System - Cased Coils**

**High Efficiency - Upflow - Enhanced Fin Design \*\*PHASING OUT\*\***

Product No	Dimensions			Line Size (Gas)	Line Size (Liquid)	Coil Type	Refrigerant Control
	H	W	D				
4PXCBU48AC3HAA	26.9	17.5	21.5	7/8	3/4	A	TXVNB
4PXCCU36AC3HAA	22.5	21	21.5	7/8	3/4	A	TXVNB
4PXCCU60AC3HAA	30.7	21	21.5	7/8	3/4	A	TXVNB



**High Efficiency - Downflow, Convertible to Horizontal Right w/Kit**

Product No	Dimensions			Line Size (Gas)	Line Size (Liquid)	Coil Type	Refrigerant Control
	H	W	D				
4PXCAD24BS3HDA	17.5	14.5	21.5	3/4	3/8	A	TXVNB
4PXCBD24BS3HDA	17.5	17.5	21.5	3/4	3/8	A	TXVNB
4PXCBD30BS3HDA	17.5	17.5	21.5	3/4	3/8	A	TXVNB
4PXCCD30BS3HDA	17.5	21	21.5	3/4	3/8	A	TXVNB
4PXCBD36BS3HDA	22.5	17.5	21.5	7/8	3/8	A	TXVNB
4PXCCD36BS3HDA	22.5	17.5	21.5	7/8	3/4	A	TXVNB
4PXCBD42BS3HDA	26.9	17.5	21.5	7/8	3/8	A	TXVNB
4PXCCD42BS3HDA	26.9	21	21.5	7/8	3/8	A	TXVNB
4PXCBD48BS3HDA	26.9	17.5	21.5	7/8	3/8	A	TXVNB
4PXCCD48BS3HDA	26.9	21	21.5	7/8	3/8	A	TXVNB
4PXCDD48BS3HDA	26.9	24.5	21.5	7/8	3/8	A	TXVNB
4PXCCD60BS3HDA	30.7	21	21.5	7/8	3/8	A	TXVNB
4PXCDD60BS3HDA	30.7	24.5	21.5	7/8	3/4	A	TXVNB



A = (Active) Stock at Customer's Branch  
NB = (Non-Branch) Non-Stock at Customer's Branch  
Blank = Non-Stock

**GENSCO**



**AMS COILS \*\*PRICING SHOWN FOR STOCKED OR NON-STOCK\*\***

**Split System - Cased Coils**

Upflow, Convertible to Horizontal Left with Kit

Product No	Dimensions			Line Size (Gas)	Line Size (Liquid)	Coil Type	Refrigerant Control
	H	W	D				
4PXCAU24BS3HAA	17.5	14.5	21.5	3/4	3/8	A	TXVNB
4PXCBU24BS3HAA	17.5	17.5	21.5	3/4	3/8	A	TXVNB
4PXCBU30BS3HAA	17.5	17.5	21.5	3/4	3/8	A	TXVNB
4PXCBU36BS3HAA	22.5	17.5	21.5	7/8	3/8	A	TXVNB
4PXCBU42BS3HAA	26.9	17.5	21.5	7/8	3/8	A	TXVNB
4PXCBU48BS3HAA	26.9	17.5	21.5	7/8	3/8	A	TXVNB
4PXCCU30BS3HAA	17.5	21	21.5	3/4	3/8	A	TXVNB
4PXCCU36BS3HAA	22.5	21	21.5	7/8	3/8	A	TXVNB
4PXCCU42BS3HAA	26.9	21	21.5	7/8	3/8	A	TXVNB
4PXCCU48BS3HAA	26.9	21	21.5	7/8	3/8	A	TXVNB
4PXCCU60BS3HAA	30.7	21	21.5	7/8	3/8	A	TXVNB
4PXCDU48BS3HAA	26.9	24.5	21.5	7/8	3/8	A	TXVNB
4PXCDU60BS3HAA	30.7	24.5	21.5	7/8	3/8	A	TXVNB



**Horizontal Conversion Kits for 4PXC coils**

Product No	Used With
BAYCONV18A	4PXCAU24, 4PXCBU24, 4PXCCU30, 4PXCAD24, 4PXCBD24, 4PXCBD30, 4PXCCD30
BAYCONV23A	4PXCBU36, 4PXCCU36, 4PXCBD236, 4PXCCD36
BAYCONV27A	4PXCBU42, 4PXCCU42, 4PXCBU48, 4PXCCU48, 4PXCDU48, 4PXCBD42, 4PXCCD42, 4PXCBD48, 4PXCCD48, 4PXCDD48
BAYCONV30A	4PXCCU60, 4PXCDU60, 4PXCCD60, 4PXCDD60

**Cooling Only Cased Coils**

Upflow/Downflow R-410A Refrigerant \*\*PHASING OUT\*\*

Product No	Dimensions			Coils	Line Size (Gas)	Line Size (Liquid)	Coil Type
	H	W	D				
4FXCA024AC3CAB	19	14.5	21.5		3/4	3/8	A
4FXCB024AC3CAB	19	17.5	21.5		3/4	3/8	A
4FXCB036AC3CAB	22.63	17.5	21.5		3/4	3/8	A
4FXCB042AC3CAB	22.63	17.5	21.5		7/8	3/8	A
4FXCB048AC3CAB	22.63	17.5	21.5		7/8	3/8	A
4FXCC048AC3CAB	22.63	21	21.5		7/8	3/8	A
4FXCD048AC3CAB	22.63	24.5	21.5	TXVNB	7/8	3/8	A
4FXCD060AC3CAA	28.75	24.5	21.5	TXVNB	7/8	3/8	A



A = (Active) Stock at Customer's Branch  
 NB = (Non-Branch) Non-Stock at Customer's Branch  
 Blank = Non-Stock







**AMS COILS \*\*PRICING SHOWN FOR STOCKED OR NON-STOCK\*\***

**Split System - Cased Coils**

High Efficiency - Downflow - Enhanced Fin Design **\*\*PHASING OUT\*\***

Product No	Dimensions			Line Size (Gas)	Line Size (Liquid)	Coil Type	Refrigerant Control
	H	W	D				
4PXCBD24AC3HDA	17.5	14.5	21.8	3/4	3/4	A	TXVNB
4PXCBD30AC3HDA	17.5	14.5	21.9	3/4	3/4	A	TXVNB
4PXCBD42AC3HDA	26.9	17.5	21.5	7/8	3/4	A	TXVNB
4PXCCD42AC3HDA	26.9	17.5	21.5	7/8	3/4	A	TXVNB
4PXCCD48AC3HDA	26.9	17.5	21.5	7/8	3/4	A	TXVNB
4PXCCD60AC3HDA	30.7	21	21.5	7/8	3/4	A	TXVNB
4PXCCD48AC3HDA	26.9	17.5	21.5	7/8	3/4	A	TXVNB



**Aluminum High Efficiency Staged Cased Coil**

Product No	Nom. Cap. Cooling (Btuh)	Dimensions			Wt.		Line Size (Gas)	Line Size (Liquid)	Coil Type	Refrigerant Control
		H	W	D	lbs.					
4GXCA001AC6HUA	30,000	20	14.5	21	47	0.75	0.375	A	FCCV	
4GXCA003AC6HUA	30,000	20	14.5	21	47	0.75	0.375	A	FCCV	
4GXCB002AC6HUA	24,000	20	17.5	21	50	0.75	0.375	A	FCCV	
4GXCB004AC6HUA	30,000	20	17.5	21	50	0.75	0.375	A	FCCV	
4GXCB006AC6HUA	42,000	26	17.5	21	61	0.875	0.375	A	FCCV	
4GXCC005AC6HUA	36,000	20	21	21	55	0.75	0.375	A	FCCV	
4GXCC007AC6HUA	42,000	26	21	21	68	0.875	0.375	A	FCCV	
4GXCC009AC6HUA	48,000	30	21	21	92	0.875	0.375	A	FCCV	
4GXCD008AC6HUA	42,000	26	24.5	21	68	0.875	0.375	A	FCCV	
4GXCD010AC6HUA	60,000	30	24.5	21	96	0.875	0.375	A	FCCV	



**R-410A TXV Kit**

Product No	R-22 TXV Kit (If required)	Tons
4AYTXVH3G2436A	2AYTXVH3G2436A	1.5-3.0
4AYTXVH3G4248A	2AYTXVH3G4248A	3.5-4.0
4AYTXVH3G6000A	2AYTXVH3G6000A	5

A = (Active) Stock at Customer's Branch  
 NB = (Non-Branch) Non-Stock at Customer's Branch  
 Blank = Non-Stock



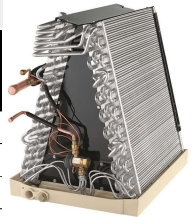


**AMS COILS \*\*PRICING SHOWN FOR STOCKED OR NON-STOCK\*\***

**Split System - Uncased Coils**

**Uncased Coil-Upflow/Downflow \*\*PHASING OUT\*\***

Product No	Dimensions			Line Size (Gas)	Line Size (Liquid)	Coil Type	Refrigerant Control
	H	W	D				
4TXAB036BC3HUB	21.2	16.3	21.1	3/4	3/8	A	TXVNB
4TXAC043BC3HUB	20.8	19.8	21.1	3/4	3/8	A	TXVNB
4TXAD065AS3HUA							



**13 SEER Split System - Uncased Coil Enclosures**

Product No	Coils	Used with Furnaces Flush on Both Sides	Wt. lbs.
BAYCLE17A1722A	4TXAB025AS, 4PXABU24BS, 4TXAB031AS, 4PXABU30BS, 4TXAB036AS, 4PXABU36BS, 4TXAB025BC, 4PXABU42BS, 4TXAB031BC, 4PXABU48BS, 4TXAB032BC, 4TXAB036BC, 4TXAB042BC, 4TXAB048BC	17.5" Wide Furnace	14
BAYCLE21A2130A	4TXAC037AS, 4PXACU30BS, 4TXAC054AS, 4PXACU36BS, 4TXAC037BC, 4PXACU42BS, 4TXAC043BC, 4PXABU48BS, 4TXAC044BC, 4TXAC049BC, 4TXAC060BC	21" Wide Furnace	18
BAYCLE24A2430A	4TXAD065AS, 4PXADU48BS, 4TXAD050BC, 4PXADU60BS, 4TXAD061BC, 4TXAD064BC	24.5" Wide Furnace	22

A = (Active) Stock at Customer's Branch  
 NB = (Non-Branch) Non-Stock at Customer's Branch  
 Blank = Non-Stock





## AMERICAN STANDARD ACCESSORIES

### AccuLink Platinum 950

Product No	Description
AZONE950AC52ZA	XL950 Touchscreen Thermostat
BAY24VRPAC52DB	24 Volt Relay Panel for XL 950 Control



### Platinum XV 850 7-Day Programmable Thermostat

Product No	Description
ACONT850AC52UA	5-Heat, 2-Cool
BAY24VRPAC52DC	For use with 18 & 20 SEER AC units with S9V2 furnaces ONLY & 850 Thermostat Controls ONLY



### Gold 824 7 Day Programmable Control

Product No	Description
ACONT824AS52DA	5-Heat, 2-Cool



### Silver 624 Programmable 5/2 Day Comfort Controls

Product No	Description
ACONT624AS42DA	Black and White Touchscreen Thermostat
BR100	Nexia Bridge



A = (Active) Stock at Customer's Branch  
 NB = (Non-Branch) Non-Stock at Customer's Branch  
 Blank = Non-Stock



AMERICAN STANDARD ACCESSORIES

**Programmable 7 Day Comfort Control**

Product No	Description
ACONT600AF11MA	1-Heat, 1-Cool Thermostat
ACONT602AF22MA	2-H, 2-Cool Thermostat
ACONT800AS11AA	1-Heat, 1-Cool Thermostat
ACONT802AS32DA	3-Heat, 2-Cool Thermostat
ACONT803AS32DA	3-Heat, 2-Cool, Thermostat with Humidity Sensor
ACONT900AC43UA	XL900, 7 Day, 4-Heat, 2-Cool Thermostat



**Non-Programmable Comfort Controls**

Product No	Description
ACONT401AN21MA	2-Heat, 1-Cool



**Nexia™ Accessories**

**Locks**

Product No	Description
BAY369ABADBBEA	Aged Bronze Deadbolt
BAY599ABALLFEA	Aged Bronze Lever Lock
BAY599BBALLFEA	Bright Brass Lever Lock
BAY599SNALLFEA	Satin Nickel Lever Lock



**Remote Sensors**

Product No	Description
BAYSEN01ATEMPA	Outdoor Sensor
ZZSENSAL0400AA	Indoor Sensor

**Schlage Home Modules**

Product No	Description
RP100BX	Signal Repeater & Home Appliance Module
RP200RVNNSL	Signal Repeater and Dimmer Light Module



A = (Active) Stock at Customer's Branch  
NB = (Non-Branch) Non-Stock at Customer's Branch  
Blank = Non-Stock

**GENSCO**



## AMERICAN STANDARD ACCESSORIES

### Nexia™ Accessories

#### Web Cameras

Product No	Dimensions			Wt.	
	H	W	D	lbs.	Airflow Range
WCE100NNSL					
WCO100NXNNSL					
WCW200NX					



### Accuclean™ Whole House Air Cleaner

#### Air Handler - 24 Volt Accuclean™ Whole House Air Cleaner

Product No	Dimensions			Wt.	
	H	W	D	lbs.	Airflow Range
AFD175CLAH000E	7 1/2	17 1/2	21	37	300-1200
AFD215CLAH000E	7 1/2	21 1/2	21	42	300-1200
AFD235CLAH000E	7 1/2	23 1/2	21	44	350-1600
AFD260CLAH000E	7 1/2	26	21	46	400-2000



#### Downflow Furnace - 24 Volt Accuclean™ Whole House Air Cleaner

Product No	Dimensions			Wt.	
	H	W	D	lbs.	Airflow Range
AFD14DCLFR000E	7 1/2	14 1/2	21	33	300-1200
AFD17DCLFR000E	7 1/2	17 1/2	21	37	300-1600
AFD21DCLFR000E	7 1/2	21	21	41	300-2000
AFD24DCLFR000E	7 1/2	24 1/2	21	45	400-2000



#### Upflow / Side Return Furnace - 24 Volt Accuclean™ Whole House Air Cleaner

Product No	Dimensions			Wt.	
	H	W	D	lbs.	Airflow Range
AFD145CLFR000E	7 1/2	14 1/2	27	39	
AFD175CLFR000E	7 1/2	17 1/2	27	43	
AFD210CLFR000E	7 1/2	21	27	47	
AFD245CLFR000E	7 1/2	24 1/2	27	49	



A = (Active) Stock at Customer's Branch  
 NB = (Non-Branch) Non-Stock at Customer's Branch  
 Blank = Non-Stock





## AMERICAN STANDARD ACCESSORIES

### Perfect Fit™ Media Filters

#### Air Handler Perfect Fit™ Medium Efficiency Air Cleaner with 1 Inch Pleated Filter

Product No	Dimensions			Wt. lbs.	Return Opening	Airflow Range
	H	W	D			
TFM215B0AH0	7 1/2	21 1/2	21	20	18 7/8 x 18 7/8	300-1400
TFM235B0AH0	7 1/2	23 1/2	21	22	20 7/8 x 18 7/8	300-1700
TFM260B0AH0	7 1/2	26	21	24	23 7/8 x 18 7/8	400-2100



#### Downflow Furnace Air Cleaner with 5 Inch Expandable Media Filter

Product No	Dimensions			Wt. lbs.	Return Opening	Airflow Range
	H	W	D			
TFM17DA0FR0	7 1/2	17 1/2	21	19	14 7/8 x 18 7/8	300-1500



#### Furnace Air Cleaner with 5 Inch Expandable Media Filter

Product No	Dimensions			Wt. lbs.	Return Opening	Airflow Range
	H	W	D			
TFM175B0FR0	7 1/2	17 1/2	27	21	14 7/8 x 24 13/16	300-1500
TFM210B0FR0	7 1/2	21	27	24	18 3/8 x 24 13/16	300-2000
TFM245B0FR0	7 1/2	24 1/2	27	27	21 7/8 x 24 13/16	400-2000



### Energy Recovery Ventilator (ERV)

Product No	Power Supply	Dimensions			Wt. lbs.	Nominal Airflow
		H	W	D		
AERVR100A9P00A	120/1/60	20 1/8	28 3/4	13	65	130
AERVR300A9P00A	120/1/60	20 1/8	28 3/4	23 7/8	95	300



A = (Active) Stock at Customer's Branch  
 NB = (Non-Branch) Non-Stock at Customer's Branch  
 Blank = Non-Stock



## AMERICAN STANDARD ACCESSORIES

### Humidification

Product No	Description	Used With
AHUMD200ABM00B	Small Bypass Humidifier	All Furnace Models
AHUMD300ABA00B	Large Bypass Humidifier	All Furnace Models
AHUMD500APA00C	Fan Powered Humidifier	All Furnace Models



A = (Active) Stock at Customer's Branch  
NB = (Non-Branch) Non-Stock at Customer's Branch  
Blank = Non-Stock

**GENSCO**



## AMERICAN STANDARD ZONING

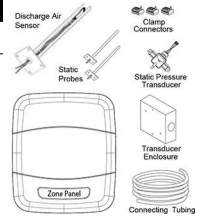
### Zoning Communicating Sensor with Display - AccuLink 940

Product No	Description
AZONE940AC52ZA	Wired Display



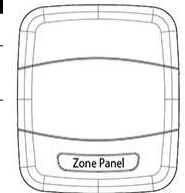
### Acculink Zoning Assembly

Product No	Description
ZZONEPNLAC52ZB	Zone Panel 1-4



### 24 Volt Panel for Non-Communicating Equipment

Product No	Description
BAY24VRPAC52DB	24 Volt Panel
BAY24VRPAC52DC	For use with 18 & 20 SEER AC units with S9V2 furnaces ONLY & 850 Thermostat Controls ONLY



A = (Active) Stock at Customer's Branch  
 NB = (Non-Branch) Non-Stock at Customer's Branch  
 Blank = Non-Stock





AMERICAN STANDARD ZONING

24 Volt Modulating Dampers

Round Dampers

Product No	Power Supply	Fits Round Duct Size
ZDAMPRDMA0006A	24 VAC	6"
ZDAMPRDMA0008A	24 VAC	8"
ZDAMPRDMA0010A	24 VAC	10"
ZDAMPRDMA0012A	24 VAC	12"
ZDAMPRDMA0014A	24 VAC	14"
ZDAMPRDMA0016A	24 VAC	16"



Retrofit Round Dampers

Product No	Power Supply	Fits Round Duct Size
ZDAMPRRMA0010A	24 VAC	10"



Rectangular Dampers with Side Mount Actuator

Product No	Power Supply	Dimensions	
		W	H
ZDAMPSMMA1608A	24 VAC	8	16
ZDAMPSMMA2008A	24 VAC	8	20
ZDAMPSMMA2010A	24 VAC	10	20
ZDAMPSMMA2012A	24 VAC	12	20



A = (Active) Stock at Customer's Branch  
 NB = (Non-Branch) Non-Stock at Customer's Branch  
 Blank = Non-Stock

**GENSCO**