

Exhibit No. ____ (DJR-2)
Docket No. UT-050606
Witness: Deborah J. Reynolds

BEFORE THE WASHINGTON
UTILITIES AND TRANSPORTATION COMMISSION

WASHINGTON UTILITIES AND
TRANSPORTATION COMMISSION

DOCKET NO. UT-050606

Complainant,

v.

INLAND TELEPHONE COMPANY,

Respondent.

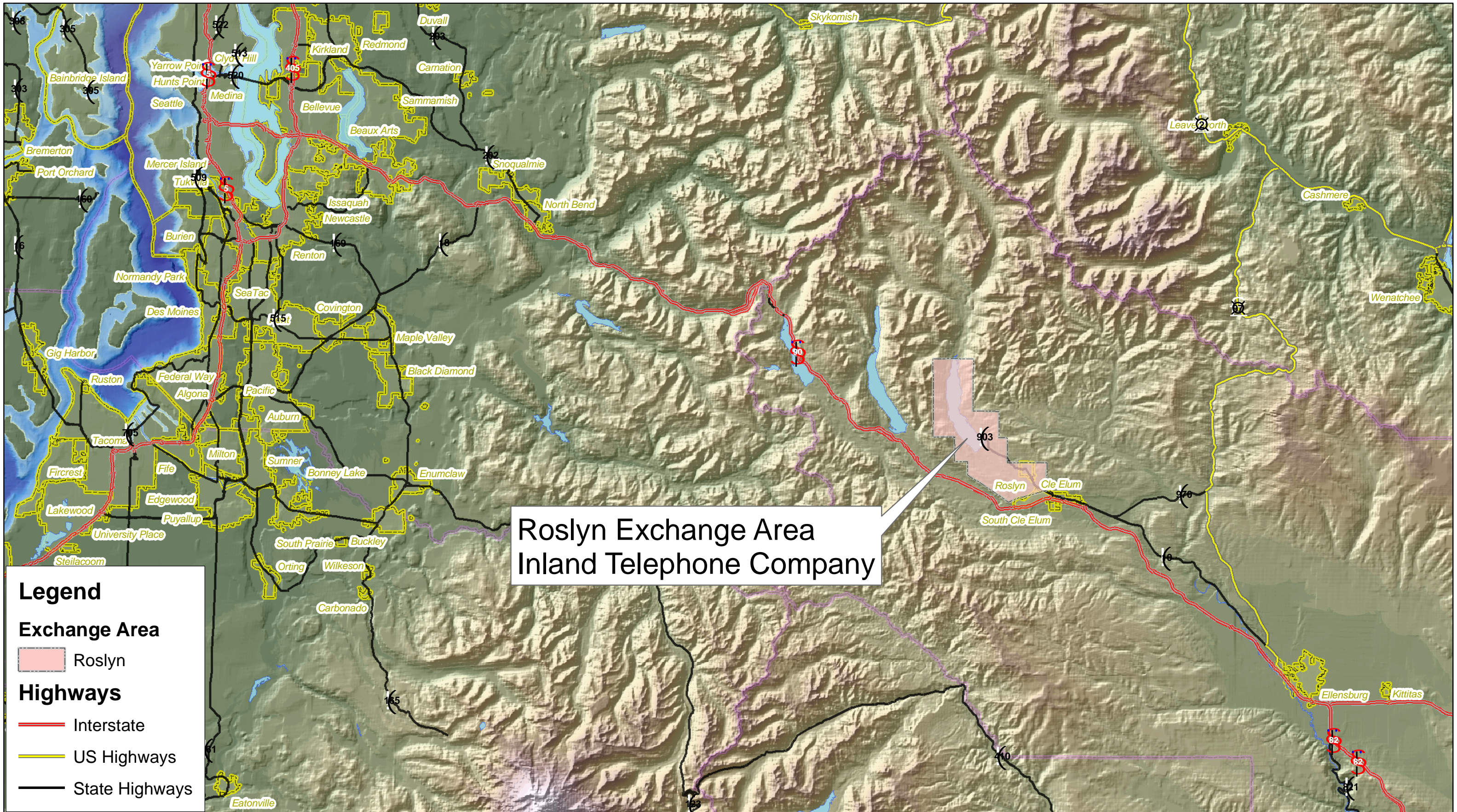
EXHIBIT TO TESTIMONY OF

DEBORAH J. REYNOLDS

STAFF OF
WASHINGTON UTILITIES AND
TRANSPORTATION COMMISSION

Maps of Roslyn Exchange

December 16, 2005



Roslyn Exchange Area
Inland Telephone Company

Legend

Exchange Area

Roslyn

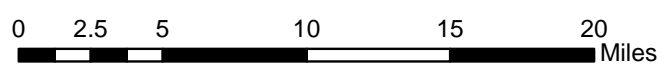
Highways

Interstate

US Highways

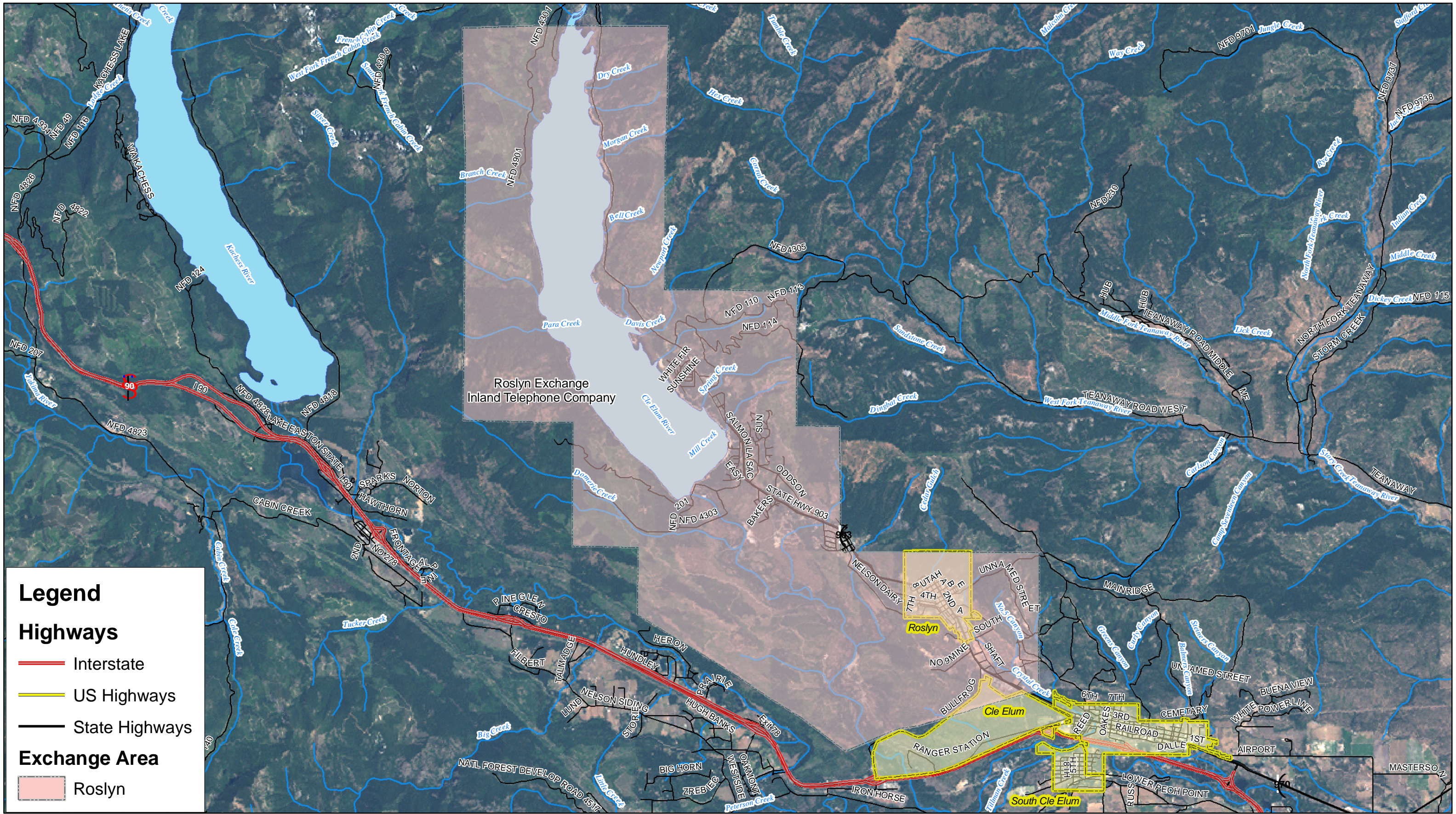
State Highways

Roslyn and Vicinity Map
Docket No. UT-050606
Exhibit No. ____ (DJR-2) Page 1



Created By: WUTC GIS

Note: -- No Representation or warranty is made concerning the accuracy, currency, completeness or quality of the data on this map.



Legend

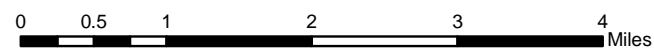
Highways

- Interstate
- US Highways
- State Highways

Exchange Area

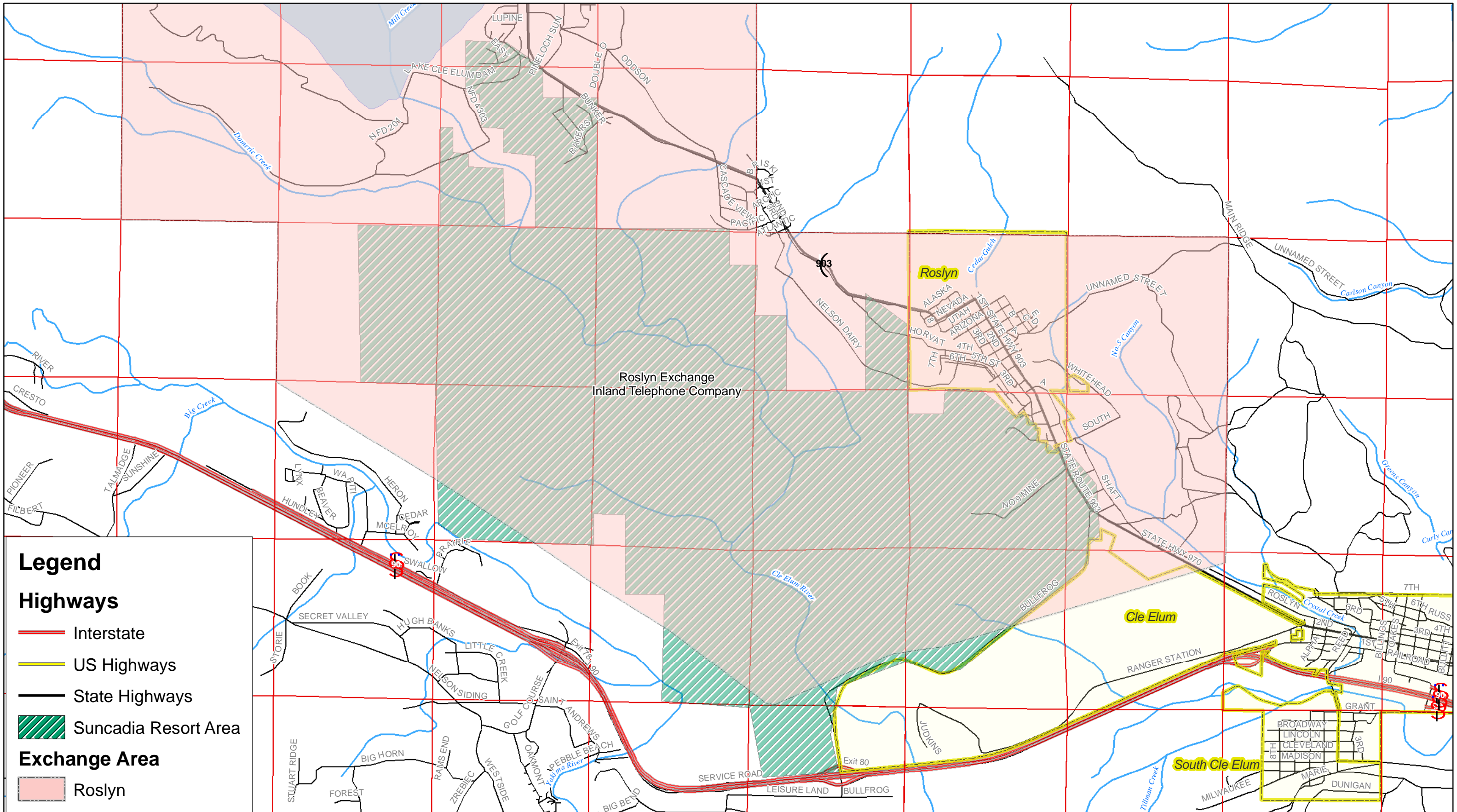
- Roslyn

Roslyn Exchange
 Docket No. UT-050606
 Exhibit No. ____ (DJR-2) Page 2



Created By: WUTC GIS

Note: -- No Representation or warranty is made concerning the accuracy, currency, completeness or quality of the data on this map.



Legend

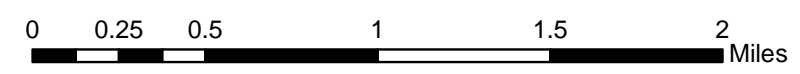
Highways

- Interstate
- US Highways
- State Highways

Exchange Area

- Suncadia Resort Area
- Roslyn

Suncadia Resort/Roslyn Exchange
 Docket No. UT-050606
 Exhibit No. ____ (DJR-2) Page 3



Created By: WUTC GIS

Note: -- No Representation or warranty is made concerning the accuracy, currency, completeness or quality of the data on this map.