

SECOND REVISED SHEET NO. 1
CANCELLING
FIRST REVISED SHEET NO. 1

WN U-3

MASHELL TELECOM, INC.

MASHELL TELECOM, INC.

104 Washington Ave. N.
P.O. Box 639
Eastonville, WA 98328

NAMING RATES FOR
TELEPHONE SERVICE

At

EATONVILLE
in Pierce County, Washington

(D)

And

CONTAINING RULES AND REGULATIONS
GOVERNING SERVICE

Issued: April 13, 2022

Effective: May 13, 2022

Issued by: MASHELL TELECOM, INC.

By: Richard A. Finnigan

Title: Attorney

FIFTH REVISED SHEET NO. 102
CANCELLING
FOURTH REVISED SHEET NO. 102

WN U-3

MASHELL TELECOM, INC.

BASIC LOCAL EXCHANGE ACCESS LINE SERVICE

LOCAL EXCHANGE ACCESS LINE SERVICE

A. GENERAL

1. Basic local exchange access line service is provided by means of a circuit directly connecting the central office switching equipment with the customer's premises to enable the establishment of telephone communications between stations in the same or different exchange at the monthly rates contained in this tariff. The facilities used to furnish local exchange access line service are also used to furnish toll telephone service at rates for such services.

2. Conditions
 - a. The following rates are based on Extended Area Service which provides telecommunications service between the following exchanges: Eatonville to, Graham, Ashford and Tacoma. (D)

 - b. Unless facilities or operating conditions limit the availability of the service, each customer must subscribe to either Option A or Option B. Those customers with 2 or more lines must use Option A except for those customers who are receiving Option B on two lines prior to April 4, 1995. (D)

For any change of option subsequent to March 1, 1994 the non-recurring charge for a Record Only Charge will apply. (D)

Issued: April 13, 2022

Effective: May 13, 2022

Issued by: MASHELL TELECOM, INC.

By: Richard A. Finnigan

Title: Attorney

SEVENTH REVISED SHEET NO. 103.1
CANCELLING
SIXTH REVISED SHEET NO. 103.1

WN U-3

MASHELL TELECOM, INC.

BASIC LOCAL EXCHANGE ACCESS LINE SERVICE

LOCAL EXCHANGE ACCESS LINE SERVICE (Continued)

B. EXCHANGE ACCESS LINE RATE

Exchange Name: Eatonville

(D)

<u>Business Service</u>	<u>Monthly Rate</u>	<u>Per Call Rate</u>
Option A	\$24.00	\$0.00
Option B	\$18.75	First 30 calls included in monthly rate. \$0.15 for each call thereafter.
Semi-Public	\$39.65	

<u>Residential Service</u>	<u>Monthly Rate</u>	<u>Per Call Rate</u>
Option A	\$18.00	\$0.00
Option B	\$18.00	First 30 calls included in monthly rate. \$0.15 for each call thereafter.

Issued: April 13, 2022

Effective: May 13, 2022

Issued by: MASHELL TELECOM, INC.

By: Richard A. Finnigan

Title: Attorney

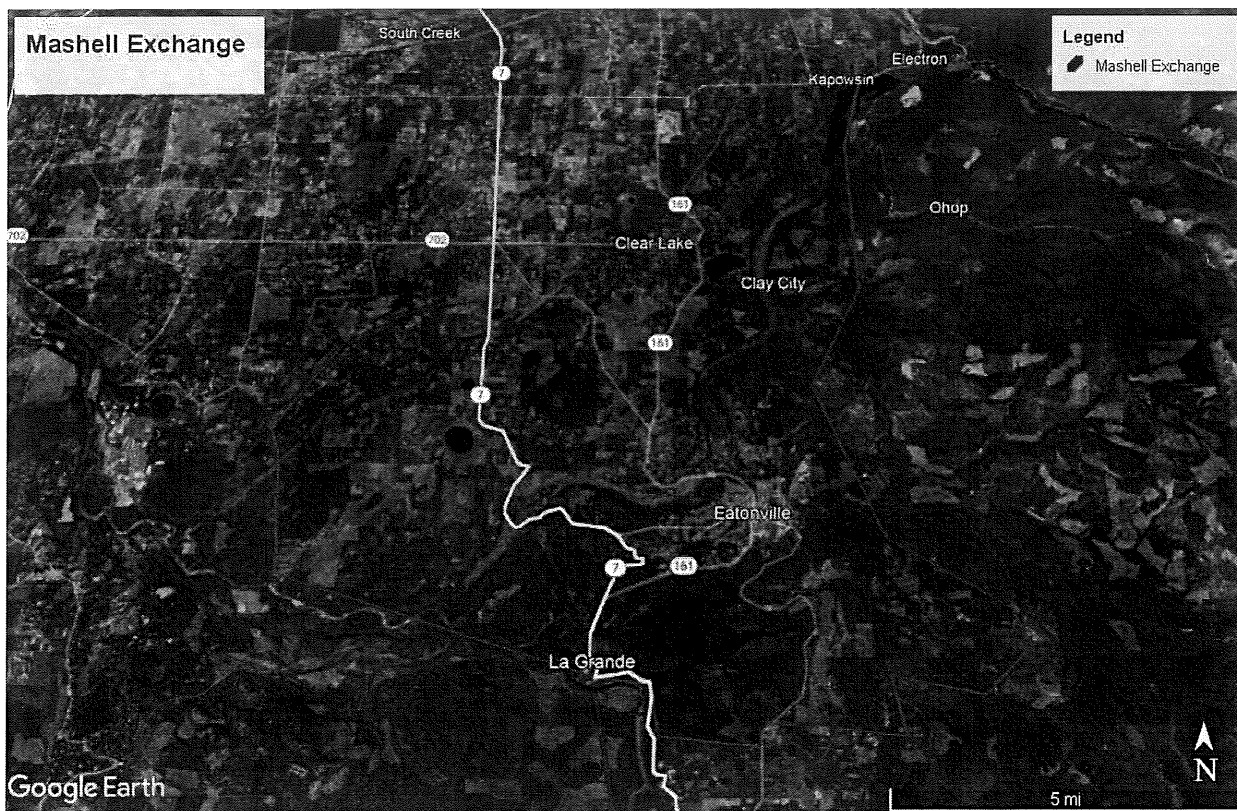
FIRST REVISED SHEET NO. 105.1
CANCELLING
SUBSTITUTE ORIGINAL SHEET NO. 105.1

WN U-3

MASHELL TELECOM, INC.

EXCHANGE AREA MAP

(C)



Issued: April 13, 2022

Effective: May 13, 2022

Issued by: MASHELL TELECOM, INC.

By: Richard A. Finnigan

Title: Attorney

SECOND REVISED SHEET NO. 901
CANCELLING
FIRST REVISED SHEET NO. 901

WN U-3

MASHELL TELECOM, INC.

TOLL RATE POINTS

<u>LOCALITY OR EXCHANGE</u>	<u>USE RATE TO</u>	<u>V</u>	<u>H</u>
Eatonville	Eatonville	6499	8876

(D)
|
(D)

Issued: April 13, 2022

Effective: May 13, 2022

Issued by: MASHELL TELECOM, INC.

By: Richard A. Finnigan

Title: Attorney