

WN U-2
 CenturyTel of Washington, Inc.
 Exchange and Network Services

Fifth Revised Index Sheet No. M1 (T)
 Cancels Fourth Index Revised Sheet No. M1 (T)

EXCHANGE MAPS - INDEX

All references herein to "Telephone Utilities of Washington"; "Pacific Telecom Inc. and subsidiaries"; "Telephone Utilities of WA PTI Communications"; and "PTI Communications", hereby refer to and are replaced by "CenturyTel of Washington, Inc."

<u>Exchange</u>	<u>Tariff No.</u>	<u>Sheet No.</u>	<u>Revision No.</u>
Ames Lake	WN U-1	M33	Original
Arletta (see Gig Harbor)	WN U-2	M 3	Second Revised
Basin City (see Connell)	WN U-2	M 6	Third Revised
Blakely (see San Juan)	WN U-2	M38.1	Original
Carnation	WN U-2	M34	Second Revised
Cheney	WN U-1	M23	Fourth Revised
Chewelah (includes former exchange of Hunters)	WN U-2	M30	Fourth Revised
Chinook (see Long Beach)	WN U-2	M 2	Third Revised
Clearwater	WN U-1	M36	Original
Connell (includes former exchanges of Basin City, Mesa & Kahlotus)	WN U-2	M 6	Third Revised
Creston	WN U-1	M28	First Revised
Davenport	WN U-1	M27	First Revised
East Sound (see San Juan)	WN U-2	M38.1	Original
Elma	WN U-1	M17	First Revised
Eltopia (see Mathews Corner)	WN U-1	M10	Second Revised
Fall City	WN U-2	M32	Second Revised
Forks	WN U-2	M37	Second Revised
Fox Island (see Gig Harbor)	WN U-2	M 3	Second Revised
Friday Harbor (see San Juan)	WN U-2	M38.1	Original
Gig Harbor (includes former exchanges of Arletta, Fox Island & Lakebay)	WN U-2	M 3	Second Revised
Glenoma	WN U-1	M 4	Second Revised
Kahlotus (see Connell)	WN U-2	M 6	Third Revised
Kettle Falls	WN U-1	M31	Fifth Revised
Kingston	WN U-2	M19	Second Revised
Lakebay (see Gig Harbor)	WN U-2	M 3	Second Revised
Long Beach (includes former exchanges of Chinook & Ocean Park)	WN U-2	M 2	Third Revised
Lopez (see San Juan)	WN U-2	M38.1	Original
Mathews Corner (includes former exchange of Eltopia)	WN U-2	M10	Second Revised
McCleary	WN U-1	M16	Original
Medical Lake	WN U-1	M26	First Revised
Mesa (see Connell)	WN U-2	M 6	Third Revised
Mineral	WN U-1	M 4	Second Revised
Montesano	WN U-1	M18	Original
Morton	WN U-1	M 4	Second Revised
North Bend	WN U-2	M29	Third Revised
Ocean Park (see Long Beach)	WN U-2	M 2	Third Revised
Orting	WN U-1	M 5	First Revised
Packwood	WN U-2	M13	Second Revised
Puget Island (also includes Cathlamet for reference)	WN U-1	M14	First Revised

(T)

(T)

WN U-2
 CenturyTel of Washington, Inc.
 Exchange and Network Services

Third Revised Index Sheet No. M2 (T)
 Cancels Second Revised Index Sheet No. M2 (T)

EXCHANGE MAPS - INDEX

All references herein to "Telephone Utilities of Washington"; "Pacific Telecom Inc. and subsidiaries"; "Telephone Utilities of WA PTI Communications"; and "PTI Communications", hereby refer to and are replaced by "CenturyTel of Washington, Inc."

<u>Exchange</u>	<u>Tariff No.</u>	<u>Sheet No.</u>	<u>Revision No.</u>
Randle	WN U-1	M 4	Second Revised
Reardan	WN U-1	M25	Original
Reserved For Future Use	WN U-2	M38	First Revised
Reserved For Future Use	WN U-2	M39	First Revised
Reserved For Future Use	WN U-2	M40	First Revised
Reserved For Future Use	WN U-2	M41	Second Revised
Reserved For Future Use	WN U-2	M42	First Revised
San Juan (includes former exchanges of Blakely, East Sound, Friday Harbor & Lopez)	WN U-2	M38.1	Original
Snoqualmie Pass	WN U-2	M35	Second Revised
South Prairie	WN U-1	M 5	First Revised
Spangle	WN U-1	M24	First Revised
Twisp (includes former exchange of Winthrop)	WN U-1	M20	Second Revised
Vashon	WN U-1	M22	First Revised
Washtucna	WN U-1	M12	Original
Winthrop (see Twisp)	WN U-1	M20	Second Revised

(T)

(T)

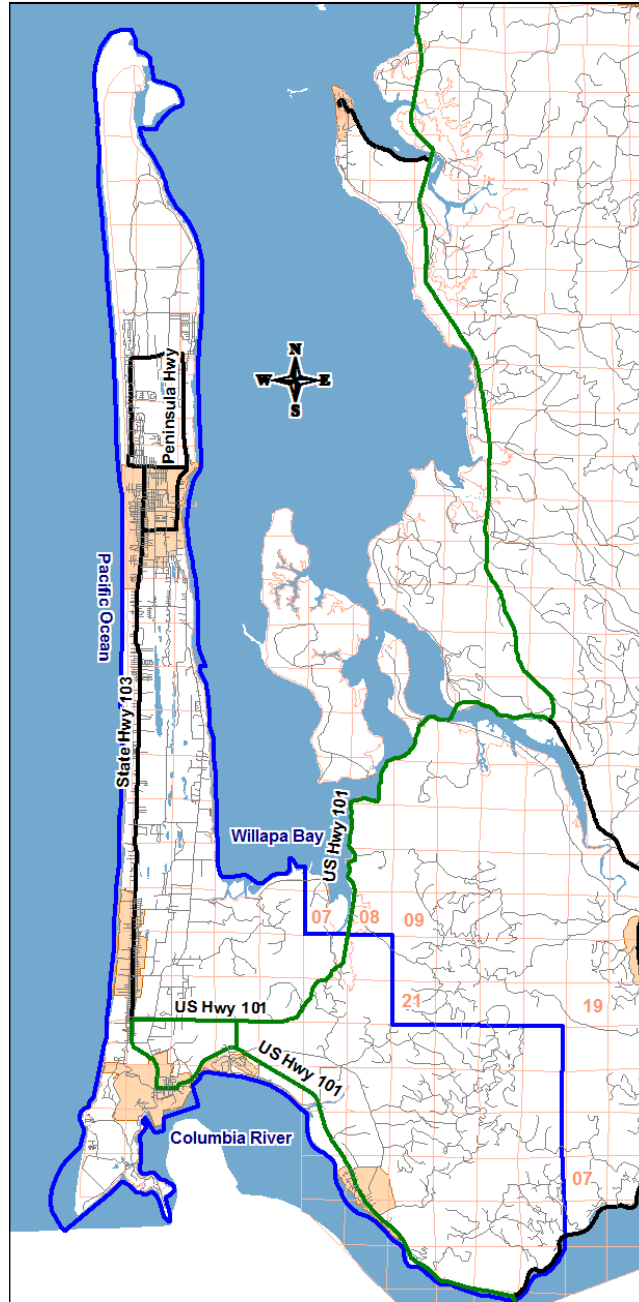
WN U-2
CenturyTel of Washington, Inc.
Exchange and Network Services

Third Revised Sheet No. M 2
Cancels Second Revised Sheet No. M 2

EXCHANGE MAPS

Long Beach
(Includes Chinook & Ocean Park)

(T)

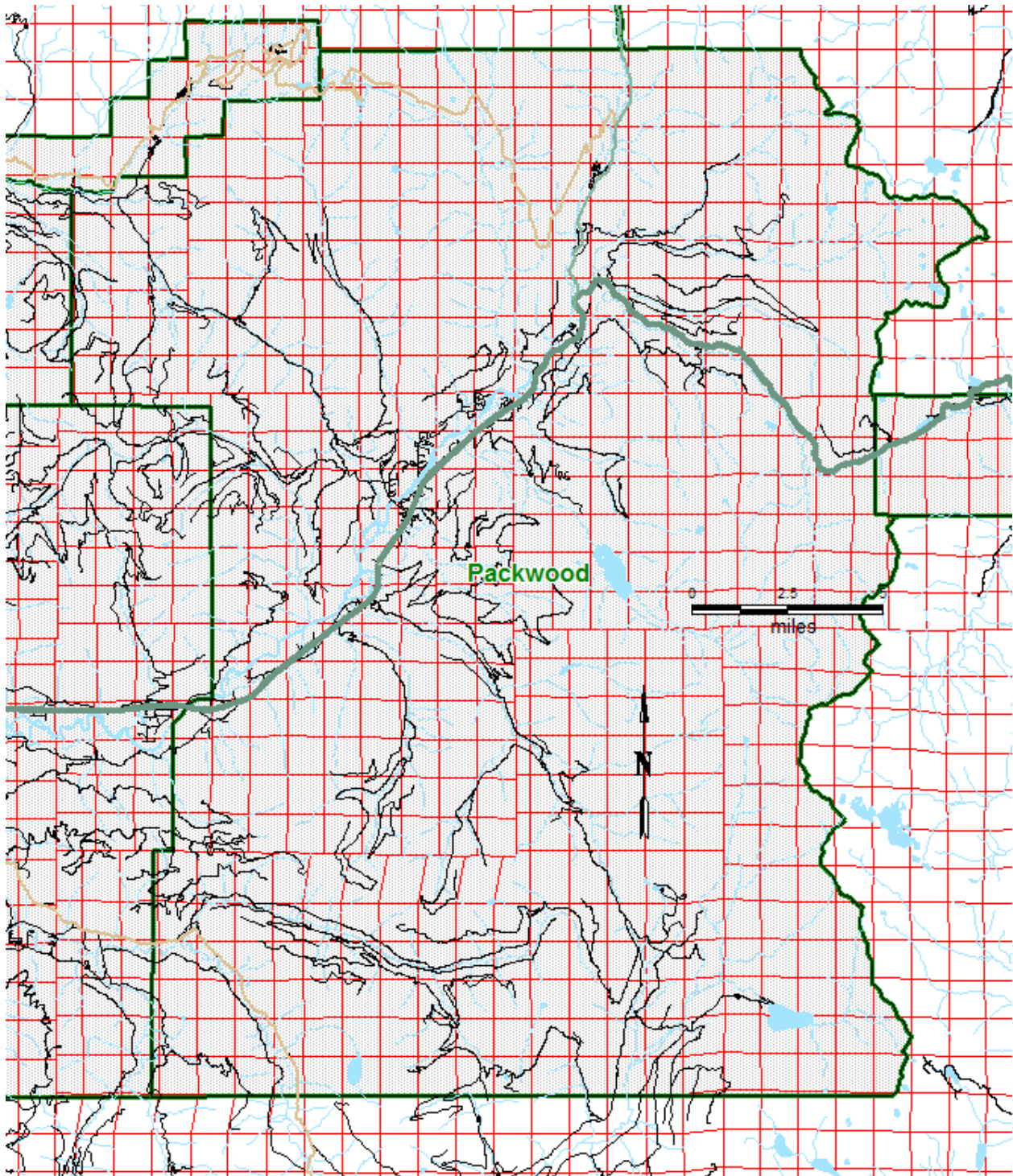


WN U-2
CenturyTel of Washington, Inc.
Exchange and Network Services

Second Revised Sheet No. M13
Cancels First Revised Sheet No. M13

EXCHANGE MAPS

Packwood



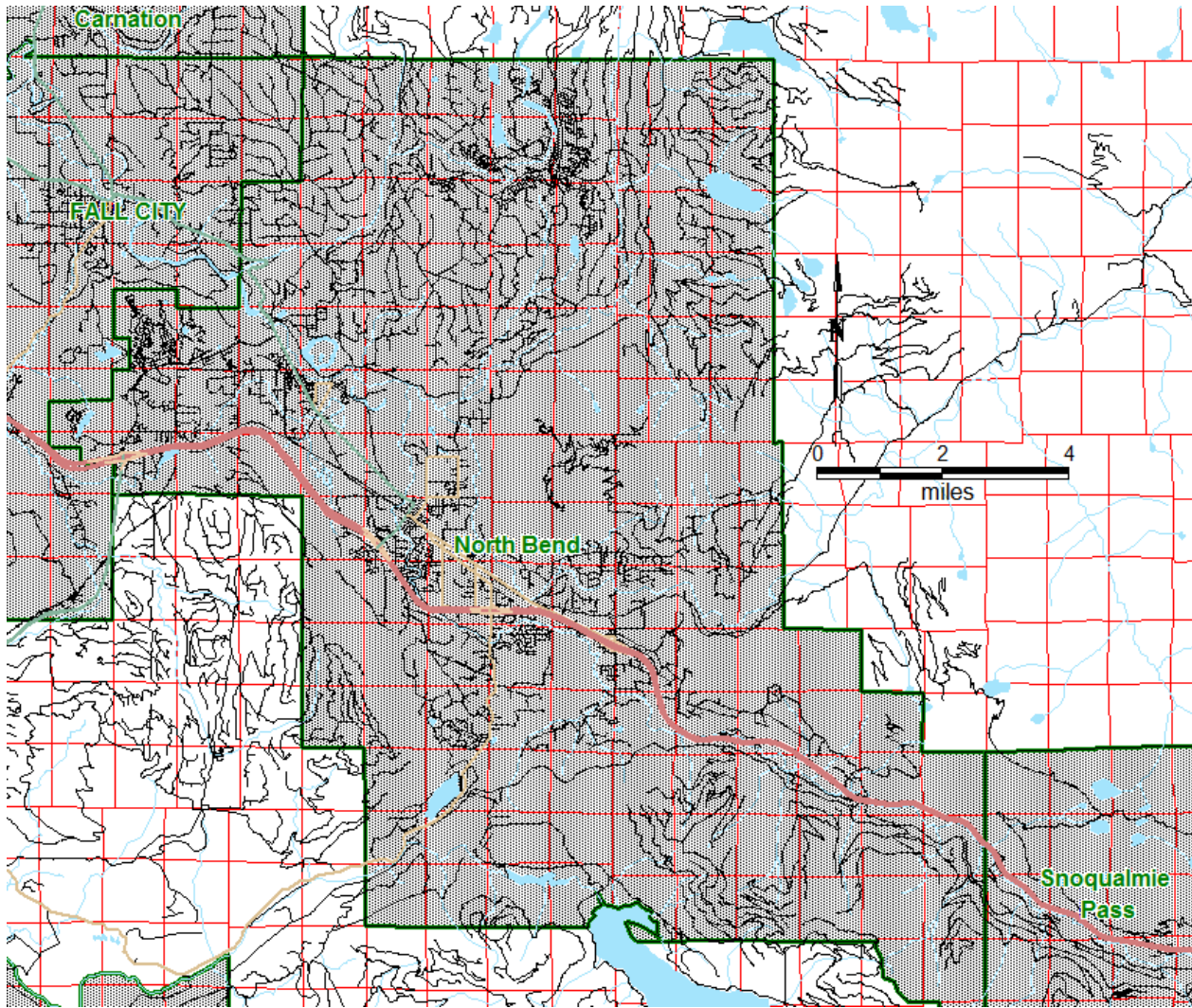
(M) Map previously located on a portion of Second Revised Sheet No. M4 in WN U-1.

WN U-2
CenturyTel of Washington, Inc.
Exchange and Network Services

Third Revised Sheet No. M29
Cancels Second Revised Sheet No. M29

EXCHANGE MAPS

North Bend



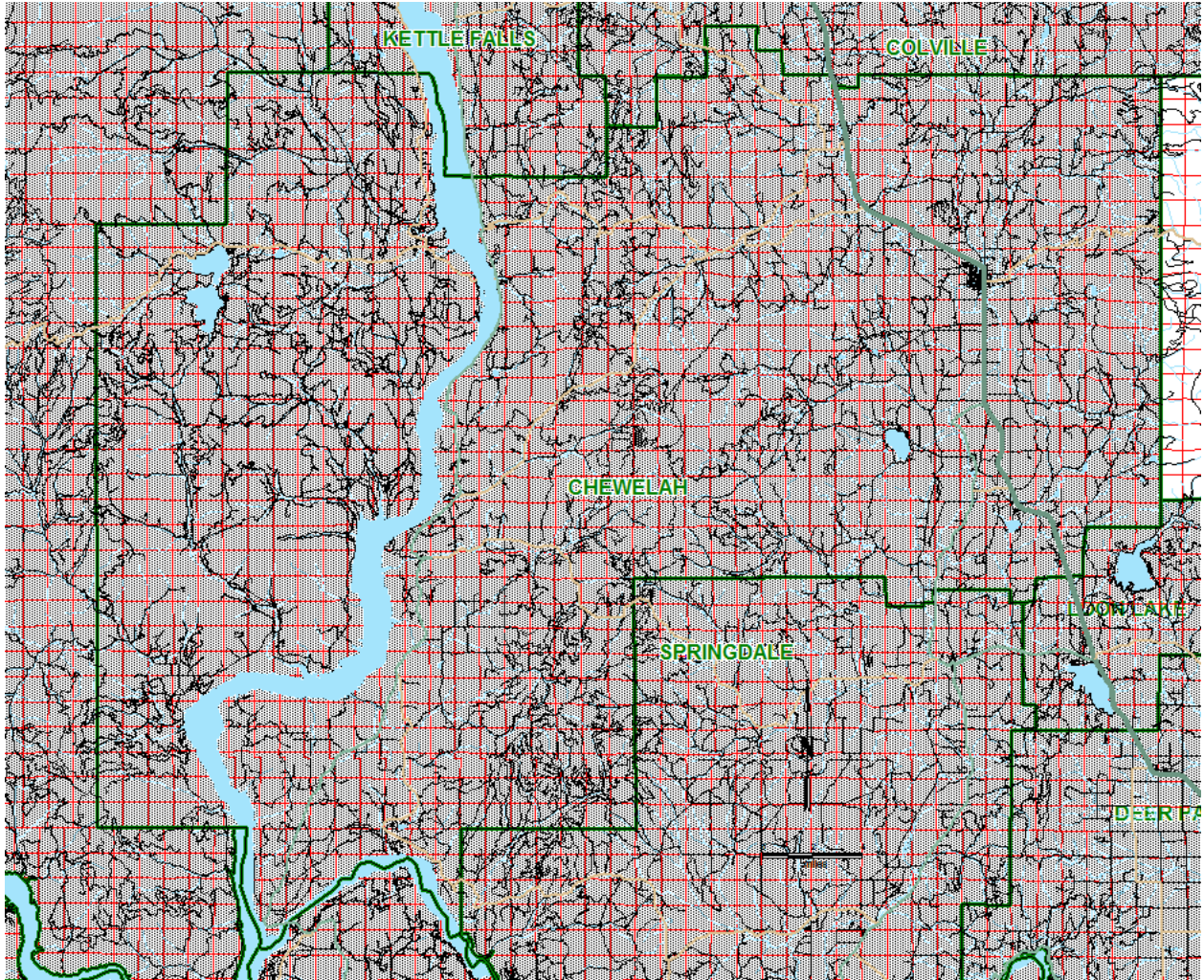
(M) Map previously located on a portion of First Revised Sheet No. M32 of WN U-1.

WN U-2
CenturyTel of Washington, Inc.
Exchange and Network Services

Fourth Revised Sheet No. M30
Cancels Third Revised Sheet No. M30

EXCHANGE MAPS

Chewelah
(Includes Hunters)



(T)

(C)

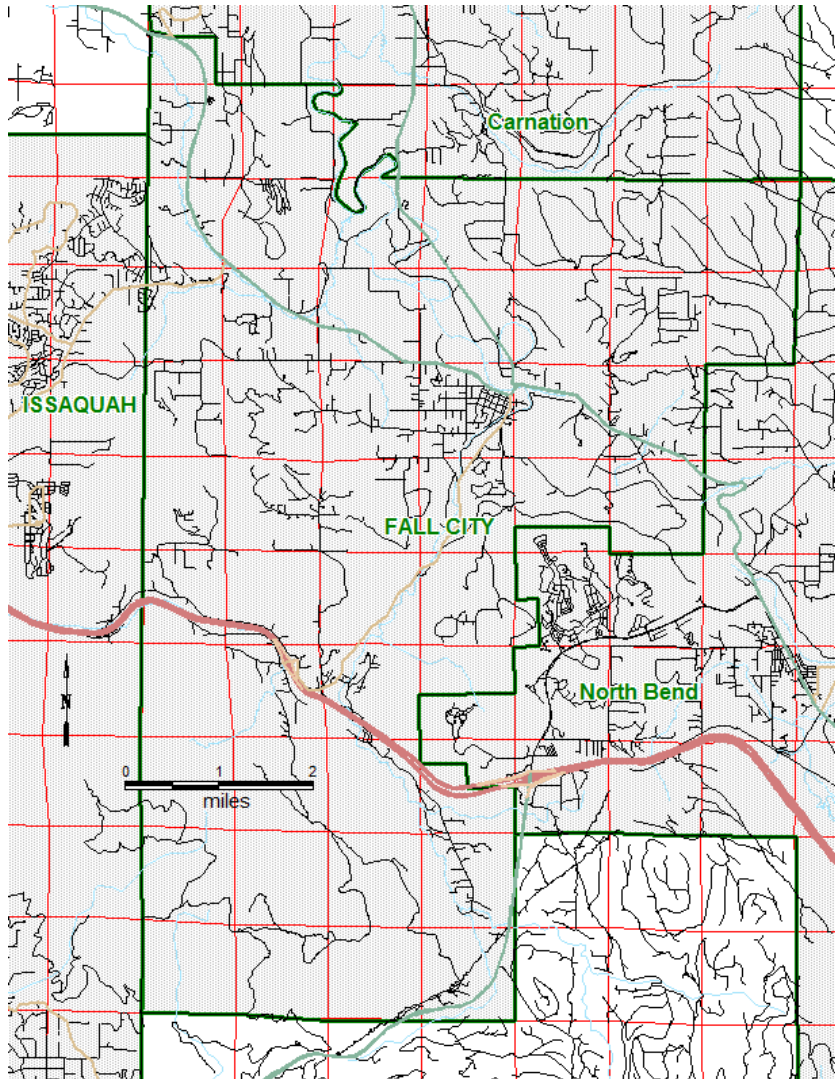
(C)

WN U-2
CenturyTel of Washington, Inc.
Exchange and Network Services

Second Revised Sheet No. M32
Cancels First Revised Sheet No. M32

EXCHANGE MAPS

Fall City



(C)

(C)

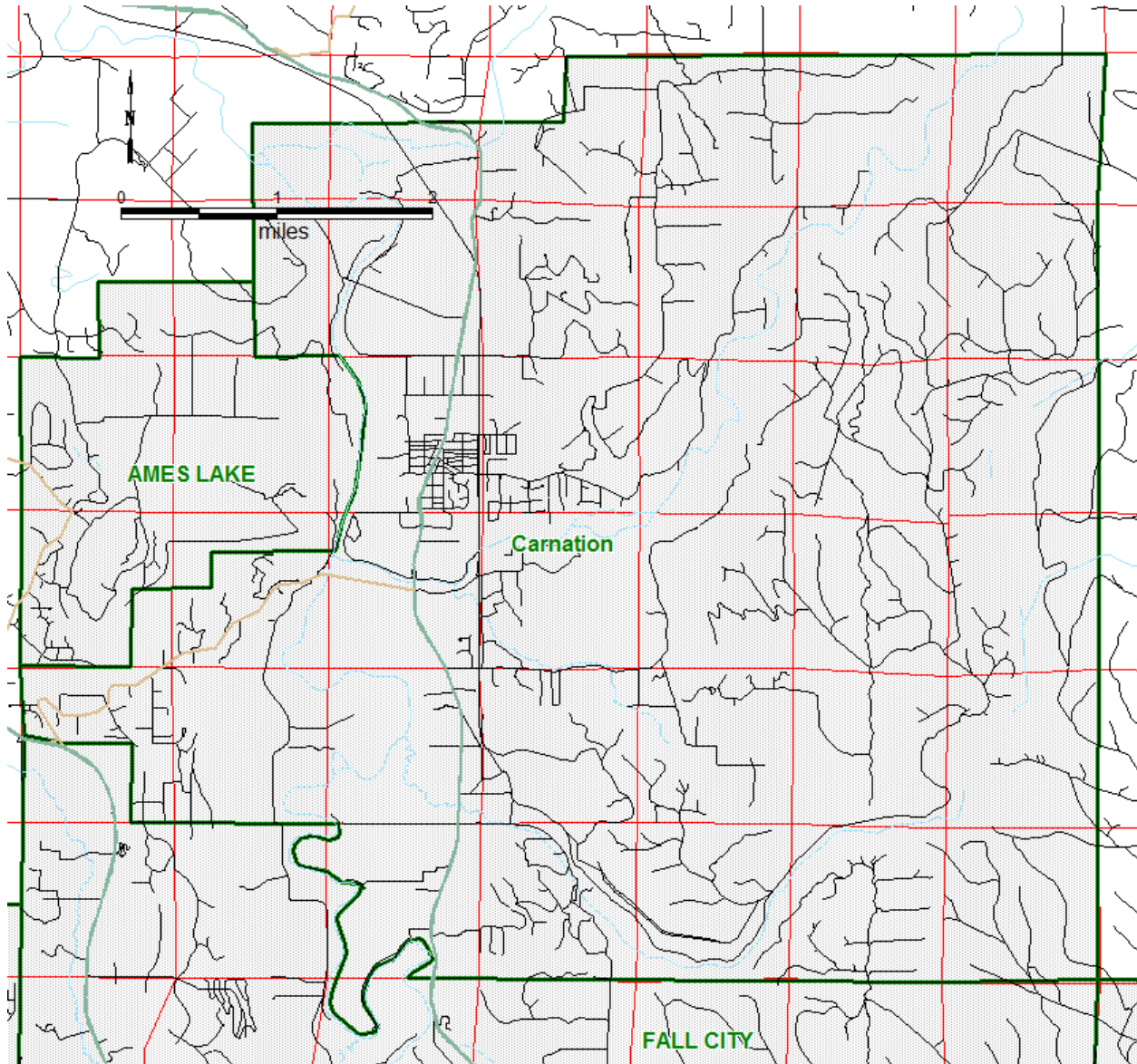
(M) Map previously located on a portion of First Revised Sheet No. M32 of WN U-1.

WN U-2
CenturyTel of Washington, Inc.
Exchange and Network Services

Second Revised Sheet No. M34
Cancels First Revised Sheet No. M34

EXCHANGE MAPS

Carnation



(C)

(C)

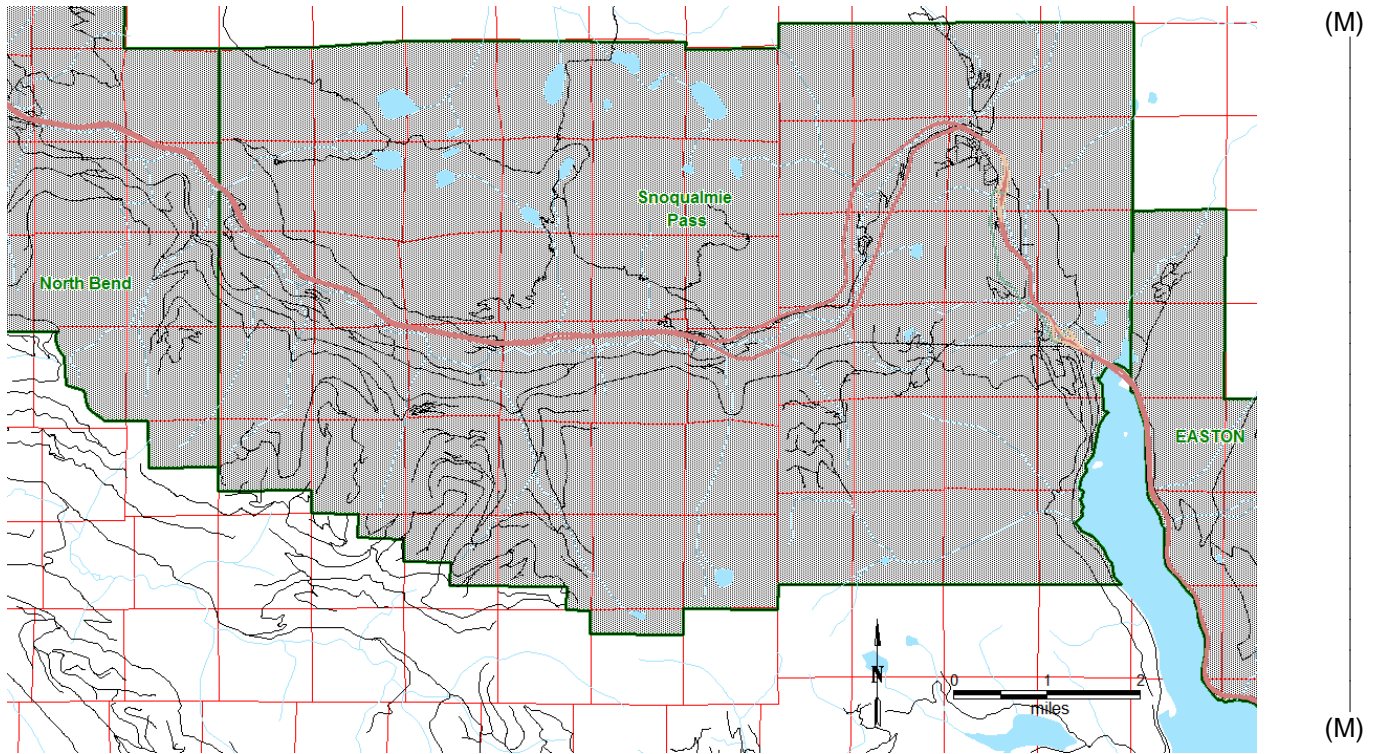
(M) Map previously located on a portion of First Revised Sheet No. M32 of WN U-1.

WN U-2
CenturyTel of Washington, Inc.
Exchange and Network Services

Second Revised Sheet No. M35
Cancels First Revised Sheet No. M35

EXCHANGE MAPS

Snoqualmie Pass



(M) Map previously located on a portion of First Revised Sheet No. M32 of WN U-1.