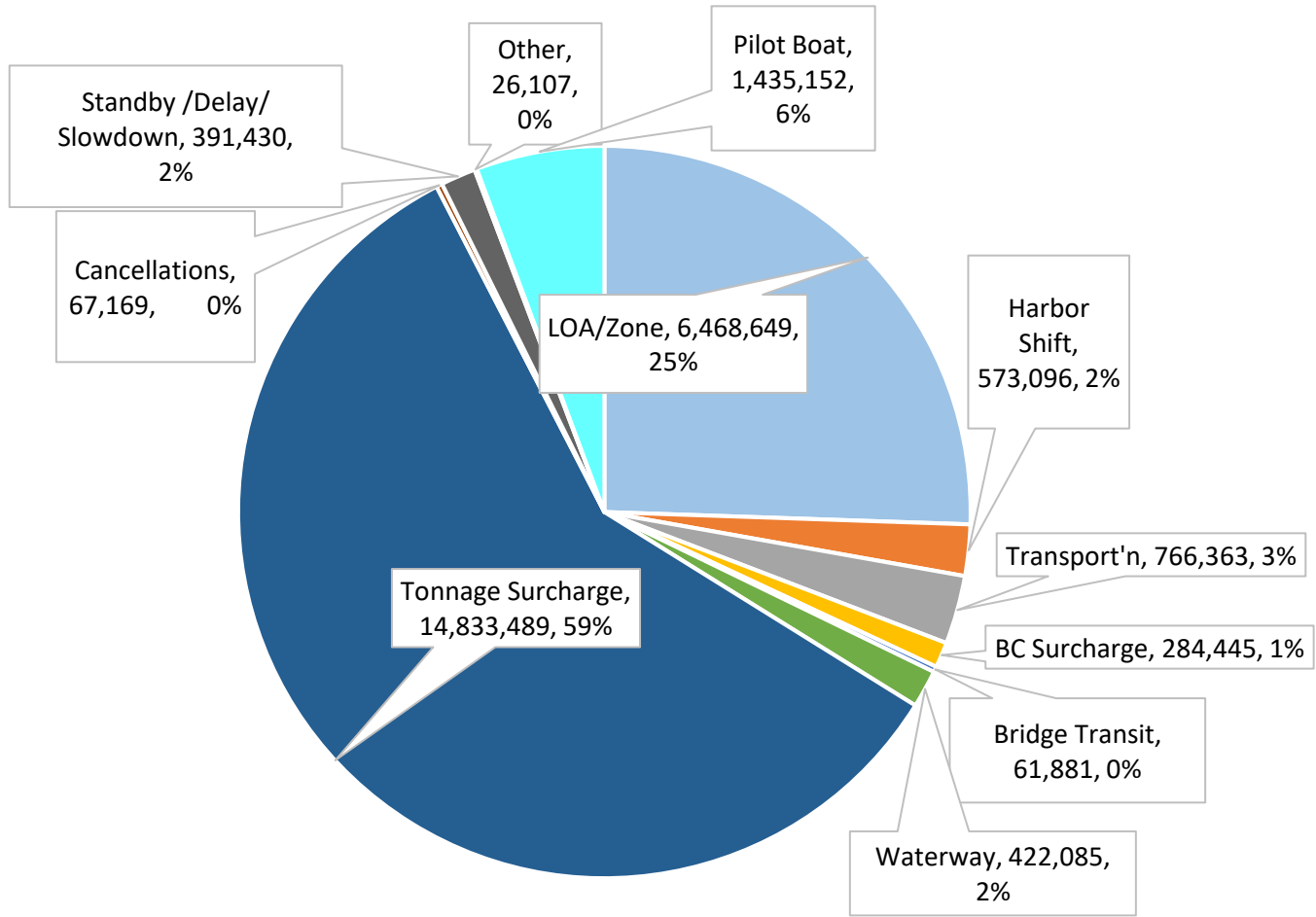


Source of Revenue Breakdown
1st, 2nd 3rd Quarters for 2017, 2016, 2015

Exh. JR-09

SUMMARY OF PSP																		
Earned Revenue Rpt <u>Calendar Year</u>	2017 1st Qtr YTD	2017 2nd Qtr	2017 3rd Qtr	2017 YTD		2016 1st Qtr YTD	2016 2nd Qtr	2016 3rd Qtr	2016 YTD		2015 1st Qtr YTD	2015 2nd Qtr	2015 3rd Qtr	2015 YTD				
--Counters & Misc Totals--																		
Seattle Assigns	417	611	657	1,685	-3.3%	415	607	720	1,742	-10.2%	533	726	681	1,940	21.2%			
Ship Assigns	1,705	1,866	1,929	5,500	-4.7%	1,759	1,981	2,033	5,773	-1.2%	1,733	2,185	1,926	5,844	12.7%			
Pilot Boat Assigns	1,218	1,393	1,514	4,125	-0.5%	1,254	1,440	1,453	4,147	1.5%	1,220	1,474	1,390	4,084	4.3%			
Tonnage Surcharge/Moves	1,662	1,829	1,897	5,388	-5.2%	1,718	1,948	2,020	5,686	-0.4%	1,689	2,127	1,895	5,711	11.6%			
Surcharge Revenue	\$3,975,144	\$5,045,826	\$5,812,519	\$14,833,489	-0.9%	\$3,970,859	\$5,078,192	\$5,923,841	\$14,972,892	10.7%	\$3,612,467	\$4,457,372	\$5,458,164	\$13,528,002	1.1%			
--Source of Revenue Breakdown--			Revenue	Revenue	% of total Rev	YTD Change			Revenue	% of total Rev	YTD Change			Revenue	% of total Rev	YTD Change		
LOA/Zone (*)	\$1,906,628	\$2,187,021	\$2,375,000	\$6,468,649	25.5%	-3.1%	\$1,971,175	\$2,272,257	\$2,430,109	\$6,673,541	25.5%	1.7%	\$1,921,017	\$2,327,287	2,314,057	\$6,562,361	26.5%	-0.4%
Harbor Shift (*)	241,232	179,973	151,891	573,096	2.3%	-24.9%	255,129	255,161	252,965	763,255	2.9%	4.0%	210,821	283,388	239,703	733,912	3.0%	13.9%
Transportation (**)	242,747	265,285	258,331	766,363	3.0%	-6.5%	258,844	279,996	280,626	819,467	3.1%	1.0%	235,544	307,159	268,865	811,568	3.3%	12.0%
BC Surcharge (***)	77,959	107,457	99,029	284,445	1.1%	-8.2%	73,745	117,992	117,992	309,729	1.2%	8.9%	82,173	88,494	113,778	284,445	1.1%	18.4%
Bridge Transit (***)	19,771	23,252	18,858	61,881	0.2%	-19.1%	24,180	27,428	24,876	76,484	0.3%	4.7%	20,763	25,613	26,666	73,042	0.3%	14.2%
Waterway (***)	158,042	130,986	133,057	422,085	1.7%	-20.7%	185,991	178,429	168,112	532,532	2.0%	-0.5%	136,781	202,844	195,852	535,477	2.2%	7.9%
Tonnage Surcharge (***)	3,975,144	5,045,826	5,812,519	14,833,489	58.6%	-0.9%	3,970,859	5,078,192	5,923,841	14,972,892	57.2%	10.7%	3,612,466	4,457,371	5,458,164	13,528,000	54.7%	1.1%
Cancellations (***)	27,352	21,649	18,168	67,169	0.3%	26.3%	24,548	19,570	9,068	53,186	0.2%	-20.9%	24,587	27,319	15,310	67,216	0.3%	80.3%
Compass Adj (***)	718	359	1,795	2,872	0.0%	-27.3%	1,077	2,513	359	3,949	0.0%	10.0%	1,436	1,077	1,077	3,590	0.0%	-28.6%
Standby/Sail Delay (***)	69,412	77,466	60,972	207,850	0.8%	-3.7%	88,610	71,604	55,721	215,935	0.8%	-51.3%	104,668	260,098	78,912	443,678	1.8%	84.1%
Slow Down (***)	14,522	39,456	57,266	111,244	0.4%	-39.7%	54,252	43,611	86,620	184,483	0.7%	-13.6%	29,866	116,450	67,130	213,446	0.9%	363.4%
Salmon Bay (***)	211	1,266	1,688	3,165	0.0%	-34.8%	210	1,266	3,376	4,852	0.0%		0	1,477	0	1,477	0.0%	-41.7%
Lk Union/Washington (***)	164	984	1,148	2,296	0.0%	-20.3%	164	1,078	1,640	2,882	0.0%		0	0	0	0	0.0%	
Sea Trials (***)	3,718	0	5,577	9,295	0.0%	-38.9%	3,718	7,267	4,225	15,210	0.1%	-1.1%	5,577	5,746	4,056	15,379	0.1%	-35.9%
Delayed Arr & Dock Delay (***)	26,852	36,716	8,768	72,336	0.3%	-17.8%	43,310	27,400	17,262	87,972	0.3%	113.5%	17,810	13,260	10,138	41,208	0.2%	52.6%
Miscellaneous (***)	56	8,036	387	8,479	0.0%			0	14	14	0.0%		0	0	0	0	0.0%	
Pilot Boat (***)	423,864	484,416	526,872	1,435,152	5.7%	-0.6%	436,392	501,120	505,992	1,443,504	5.5%	1.6%	424,560	512,952	483,372	1,420,884	5.7%	584.6%
Total-Source Section	\$7,188,392	\$8,610,148	\$9,531,326	\$25,329,866	100%	-3.2%	\$7,392,204	#####	\$9,882,798	\$26,159,886	100%	5.8%	\$6,828,068	\$8,630,535	\$9,277,080	\$24,735,683	100%	8.9%
-----Revenue-----																		
Mileage (LOA/Zone) (*)	\$2,147,860	\$2,366,994	\$2,526,891	\$7,041,745	-5.3%		\$2,226,304	\$2,527,418	\$2,683,074	\$7,436,796	1.9%		\$2,131,838	\$2,610,675	2,553,760	7,296,273	0.9%	
Trans (**)	242,747	265,285	258,331	766,363	-6.5%		258,844	279,996	280,626	819,466	1.0%		235,544	307,159	268,865	811,568	12.0%	
Special (***)	4,797,785	5,977,868	6,746,104	17,521,758	-2.1%		4,907,056	6,077,470	6,919,098	17,903,624	7.7%		4,460,688	5,712,701	6,454,455	16,627,843	12.6%	
Total -Revenue Section	\$7,188,392	\$8,610,148	\$9,531,326	\$25,329,866	-3.2%		\$7,392,204	#####	\$9,882,798	\$26,159,886	5.8%		\$6,828,068	\$8,630,535	\$9,277,080	\$24,735,683	8.9%	
RPA including transportation	\$4,216	\$4,614	\$4,941	\$4,605			\$4,203	\$4,485	\$4,861	\$4,531			\$3,940	\$3,950	\$4,817	\$4,233		
Revenue/Assignment, no Trans	\$4,074	\$4,472	\$4,807	\$4,466	1.7%		\$4,055	\$4,344	\$4,723	\$4,389	7.2%		\$3,804	\$3,809	\$4,677	\$4,094	-3.5%	
Other Stats	\$6,045,645	\$6,344,862	\$6,272,895	\$24,563,503	-3.1%		\$7,133,360	\$8,604,888	\$9,602,172	\$25,340,420	5.9%		\$6,582,525	\$8,323,377	\$9,008,215	\$23,924,115		
Pilot Boat Charges	\$423,864	\$484,416	\$526,872	1,435,152	-0.6%		\$436,392	\$501,120	\$505,992	\$1,443,504	1.6%		\$424,560	\$512,952	\$483,372	\$1,420,884	584.6%	
Pilot Boat Assignments	1,218	1,393	1,514	4,125	-0.5%		1,254	1,440	1,453	4,147	1.5%		1,220	1,474	1,390	4,084	4.3%	
Avg				348				\$348	348	348				\$348	348	348		
Tonnage Surcharge Revenue	\$3,975,144	\$5,045,826	\$5,812,519	\$14,833,489	-0.9%		\$3,970,859	\$5,078,192	\$5,923,841	\$14,972,892	10.7%		\$3,612,466	\$4,457,371	\$5,458,164	\$13,528,000	1.1%	
Tonnage Surcharge Charge # moves	1,662	1,829	1,897	5,388	-5.2%		1,718	1,948	2,020	5,686	-0.4%		1,689	2,127	1,895	5,711	11.6%	
Avg Tonnage Surcharge/Move	\$2,392	\$2,759	3,064	2,753	4.5%		\$2,311	\$2,607	2,933	\$2,633	11.2%		\$2,139	\$2,096	\$2,880	\$2,369	-9.4%	

YTD September 2017 PSP Source of Revenue



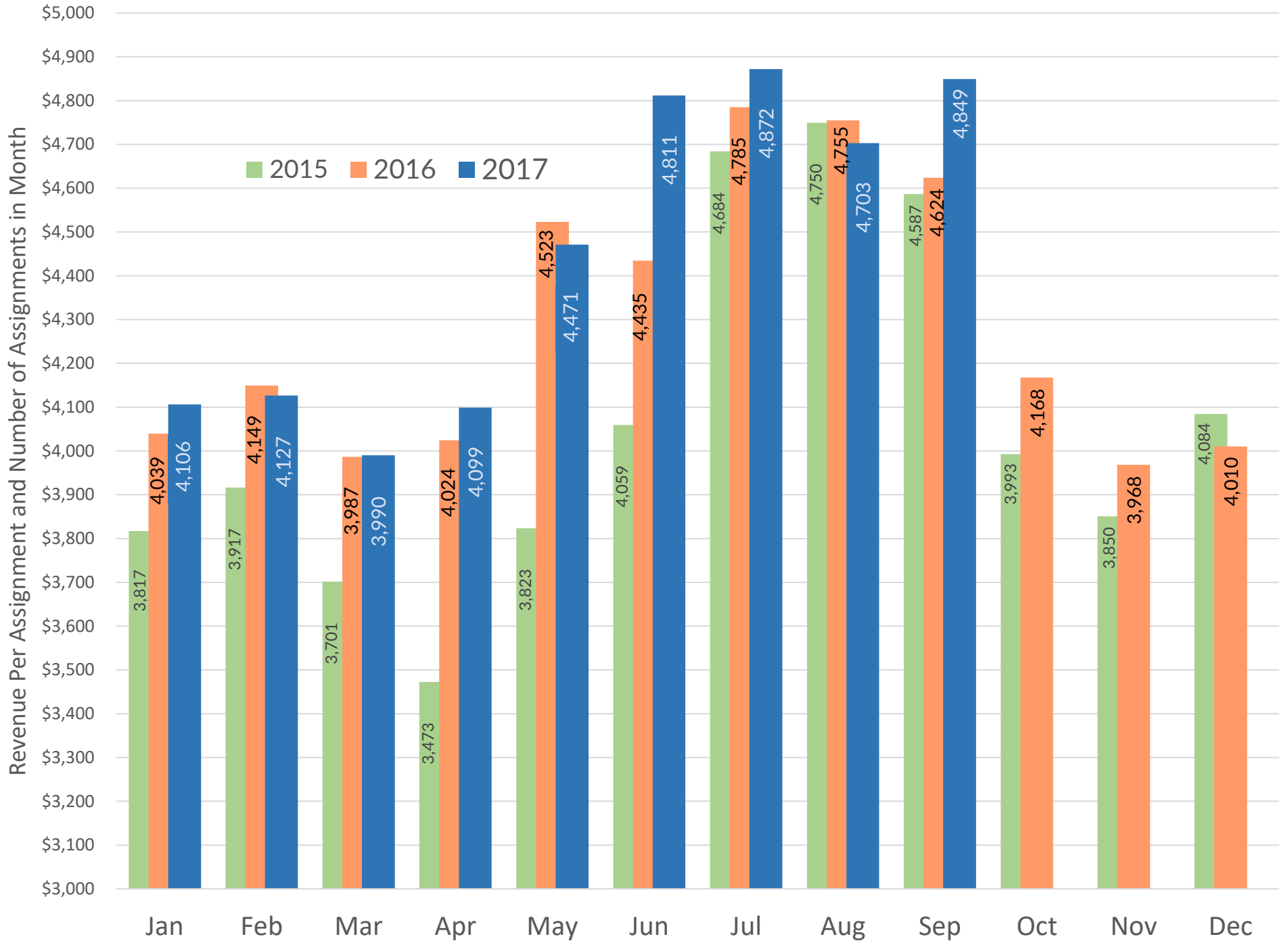
- LOA/Zone
- Harbor Shift
- Transport'n
- BC Surcharge
- Bridge Transit
- Waterway
- Tonnage Surcharge
- Cancellations
- Standby /Delay/ Slowdown

2017				Jan	Feb	Mar	Apr	May	Jun	Jul	Aug	Sep	YTD Actual Assign	Average Assgn 145/12=12.1	(under) over TAL	
Pilot Code	Actual Trips PSP Earned Revenue Report Detail			Actual Assign	Actual Assign	Actual Assign	Actual Assign	Actual Assign	Actual Assign	Actual Assign	Actual Assign	Actual Assign	Actual Assign	Actual Assign		
5	ANA	Anacker, D.S.		7	12	14	8	13	7	18	17	11	107	11.9	(2)	
5	ANT	Anthony, Michael	Lic 7/24/12	15	6	15	9	15	13	5	12	13	103	11.4	(6)	
5	ARN	Arnold, J. E.		16	11	8	13	16	19	14	8	18	123	13.7	14	
5	BLA	Blake, M.E.		16	14	11	15	5	0	Retired 7/6			61	10.2	1	
5	BOU	Bouma, Blair		11	4	11	8	16	12	10	13	9	94	10.4	(15)	
4	BRO	Brouillard, Dan	Lic 7/31/13	10	8	12	15	15	10	6	17	15	108	12.0	(1)	
5	BRU	Brusco, David		14	7	17	2	15	18	12	11	2	98	10.9	(11)	
5	BUJ	Bujacich, J.P.		3	16	13	15	2	13	16	16	11	105	11.7	(4)	
4	CAW	Carley, W. Bud	Lic 1/10/13	6	8	12	12	16	6	10	4	6	80	8.9	(29)	
5	CAI	Carlson, I.J.		11	10	12	7	10	10	7	11	14	92	10.2	(17)	
1	CAJ	Carstensen, J	Lic. 9/30/15	13	9	12	10	10	11	14	12	11	102	11.3	(7)	
5	COE	Coe, F.A.		11	10	12	9	10	11	15	9	17	104	11.6	(5)	
2	COL	Coleman, S	Lic. 8/27/14	13	7	10	11	12	14	8	10	15	100	11.1	(9)	
3	COR	Coryell, T.D.	Lic. 12/13/13	10	13	14	3	19	11	14	17	4	105	11.7	(4)	
5	EME	Emerson, L. P.		10	13	15	17	23	17	14	13	8	130	14.4	21	
4	ENF	Engstrom, F. E.	Lic 11/15/12	8	13	12	12	10	14	16	11	8	104	11.6	(5)	
5	ENV	Engstrom, V.		12	9	12	14	12	11	7	0	4	81	9.0	(28)	
2	GAL	Galvin, Jamie	Lic 11/11/14	13	14	11	12	11	11	9	14	12	107	11.9	(2)	
5	GIE	Giese, P. A.		13	16	3	14	14	16	15	6	4	101	11.2	(8)	
5	GRD	Grobschmit, D.W.		7	11	12	6	13	16	14	14	9	102	11.3	(7)	
5	HAI	Hannuksela, J		14	10	17	2	15	15	17	19	7	116	12.9	7	
5	HAR	Harris, J. B.		14	5	10	8	13	11	12	8	16	97	10.8	(12)	
	HEJ	Henderson, J. David	Lic 7/6/17	not yet licensed							10	12	11	33	11	(3)
5	HEN	Henshaw, B. F.		8	0	13	12	16	10	17	23	15	114	12.7	5	
5	HUR	Hurt, G. D.		8	4	6	11	10	16	15	12	11	93	10.3	(16)	
2	JEN	Jensen, Brian	Lic. 12/22/14	9	12	10	11	17	8	8	14	10	99	11.0	(10)	
5	KAL	Kalvoy, J.E.		3	9	14	12	20	5	12	10	11	96	10.7	(13)	
5	KEA	Kearns, J.		10	13	10	10	12	10	17	16	23	121	13.4	12	
1	KEN	Kelleher, N.T.	Lic. 4/14/16	8	9	6	12	12	13	12	12	15	99	11.0	(10)	
5	KEP	Kelly, P.S.		14	15	12	5	16	15	17	17	8	119	13.2	10	
5	KLA	Klapperich, E.C.		8	10	10	11	10	7	15	11	8	90	10.0	(19)	
3	LIC	Licht, E.C.	Lic. 5/1/14	14	8	12	15	4	15	15	15	14	112	12.4	3	
2	LOB	Lowe, Brad	Lic. 9/23/15	11	11	15	12	8	15	13	15	15	115	12.8	6	
4	LOW	Lowery, W.W.	Lic. 2/11/13	16	16	14	16	3	17	10	11	17	120	13.3	11	
5	MAR	Marmol, E.		11	7	9	9	11	8	11	12	14	92	10.2	(17)	
5	MAY	Mayer, D. W.		11	14	4	6	14	10	12	12	12	95	10.6	(14)	
5	MOT	Moreno, S.		13	9	13	19	10	11	7	17	20	119	13.2	10	
5	MOR	Mork, S. E.		14	10	23	16	23	11	Retired 7/11/17			97	16.2	37	
5	NEW	Newman, A. J.		14	11	8	14	4	11	14	12	17	105	11.7	(4)	
	ROU	Rounds, Chris	Lic 7/11/17	not yet licensed							10	12	14	36	12	(0)
5	SAN	Sanders, D. A.		15	13	11	9	3	15	23	16	12	117	13.0	8	
5	SCO	Scoggins, J		13	9	10	18	14	17	8	19	13	121	13.4	12	
5	SCR	Scragg, J.		11	6	8	4	11	15	14	16	5	90	10.0	(19)	
5	SEM	Semler, J. R.		14	16	4	15	11	16	14	7	12	109	12.1	0	
5	SES	Semler, S.		16	10	10	12	18	16	12	7	12	113	12.6	4	
5	SEY	Seymour, L.		9	17	9	17	18	18	11	17	10	126	14.0	17	
5	SHA	Shaffer, D. L.		14	10	6	12	20	16	15	9	13	115	12.8	6	
5	SHJ	Shaffer, J. A.		23	14	6	13	22	14	19	11	11	133	14.8	24	
5	SHU	Shuler, M.		12	3	9	13	15	12	17	17	19	117	13.0	8	
5	SLI	Sliker, W.J.		11	10	12	6	15	11	14	12	12	103	11.4	(6)	
5	SOR	Soriano, D. B.		13	12	7	11	22	10	15	15	14	119	13.2	10	
5	THG	Thoreson, George		19	10	14	9	16	14	14	17	15	128	14.2	19	
5	VON	vonBrandenfels, E. M.	president	1	0	4	0	0	2	1	0	1	9		President	
5	WIG	Wildes, G. R.		16	15	16	13	4	12	19	19	10	124	13.8	15	
Total Assignments/ Month				606	529	570	565	664	636	664	657	608	5500			(39)
Number of licensed PS pilots				52	52	52	52	52	52	52	52	52	52			
Pilots on rotation				51	51	51	51	51	50	51	50	51	51			
Average Assgn/pilot on rotation				11.88	10.37	11.18	11.08	13.02	12.72	13.02	13.14	11.92	13.48	12.1*12*51= =7405 assgns/yr		
PSP LOA Report (MOVES)				594	520	548	550	654	625	653	643	601	5388			
Cancellations				12	9	22	15	10	11	11	14	7	111			
# of Pilots with < 6 jobs(+1=Pres)				2 + 1	5 + 1	3 + 1	5 + 1	7 + 1	2 + 1	1 + 1	2 + 1	5 + 1				
Pilots w/>5 trips & their avg # of trips				49P; 12.2	46P; 11.15	58P; 11.6	46P; 11.9	44P; 14.5	49P; 12.8	50P; 13.2	49P; 13.3	46P; 12.8				
Medical circumstances:																
2016 PSP Assignments from Earned Revenue Report																
PSP LOA Report				605	547	607	584	672	725	694	687	653	7662			
Cancellations				16	9	16	11	7	15			3	137			
Number of Pilots				51	51	51	51	51	51	51			51			

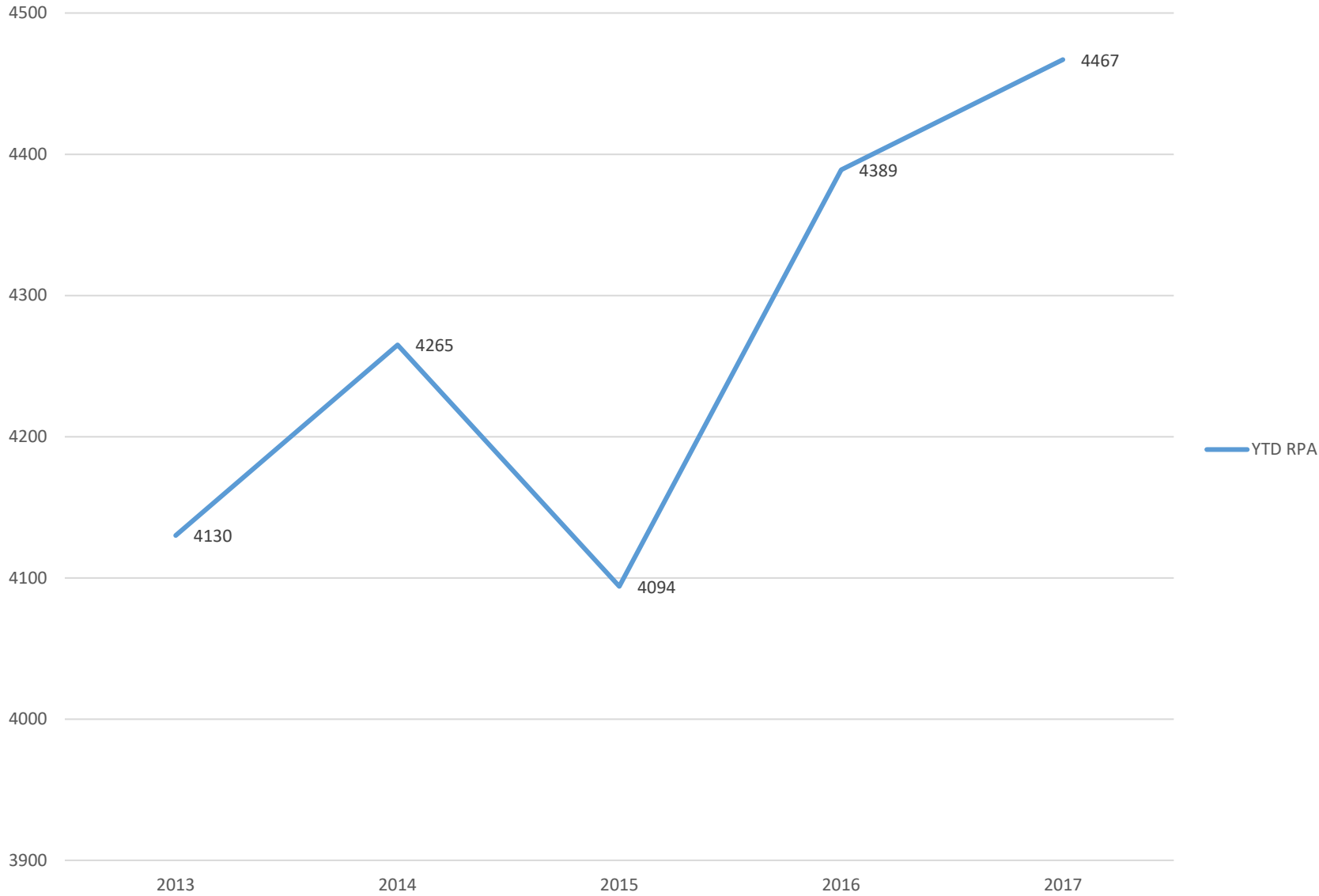
Just the Basics
Jan - Sept
2015-2017

CALENDAR YEAR	MONTH				Year to Date		
	2017 Month	Revenue(Trans)	Assignments	RPA for month	YTD Rev	YTD Assgn	YTD RPA
CALENDAR YEAR	Jan	2,488,326	606	4,106			
	Feb	2,183,032	529	4,127	4,671,358	1,135	4,116
	Mar	2,274,287	570	3,990	6,945,645	1,705	4,074
	Apr	2,315,825	565	4,099	9,261,470	2,270	4,080
	May	2,968,949	664	4,471	12,230,419	2,934	4,169
	Jun	3,060,089	636	4,811	15,290,508	3,570	4,283
	Jul	3,235,074	664	4,872	18,525,582	4,234	4,375
	Aug	3,089,703	657	4,703	21,615,285	4,891	4,419
	Sep	2,948,218	608	4,849	24,563,503	5,500	4,466
	Oct						
	Nov						
	Dec						
CALENDAR YEAR	2016 Month	Revenue(Trans)	Assignments	RPA for month	YTD Rev	YTD Assgn	YTD RPA
	Jan	2,443,846	605	4,039			
	Feb	2,269,624	547	4,149	4,713,470	1,152	4,092
	Mar	2,419,890	607	3,987	7,133,360	1,759	4,055
	Apr	2,350,195	584	4,024	9,483,555	2,343	4,048
	May	3,039,515	672	4,523	12,523,070	3,015	4,154
	Jun	3,215,179	725	4,435	15,738,249	3,740	4,208
	Jul	3,320,803	694	4,785	19,059,052	4,434	4,298
	Aug	3,261,886	686	4,755	22,320,938	5,120	4,360
	Sep	3,019,483	653	4,624	25,340,421	5,773	4,389
	Oct	2,571,409	617	4,168	27,911,830	6,390	4,368
	Nov	2,622,922	661	3,968	30,534,752	7,051	4,331
	Dec	2,446,187	610	4,010	32,980,939	7,661	4,305
	32,980,939	7,661			(134)		
CALENDAR YEAR	2015 Month	Revenue(Trans)	Assignments	RPA for month	YTD Rev	YTD Assgn	YTD RPA
	Jan	2,202,588	577	3,817			
	Feb	2,024,842	517	3,917	4,227,430	1,094	3,864
	Mar	2,365,096	639	3,701	6,592,526	1,733	3,804
	Apr	2,153,086	620	3,473	8,745,612	2,353	3,717
	May	2,959,296	774	3,823	11,704,908	3,127	3,743
	Jun	3,210,995	791	4,059	14,915,903	3,918	3,807
	Jul	2,960,243	632	4,684	17,876,146	4,550	3,929
	Aug	3,291,439	693	4,750	21,167,585	5,243	4,037
	Sep	2,756,533	601	4,587	23,924,118	5,844	4,094
	Oct	2,659,033	666	3,993	26,583,151	6,510	4,083
	Nov	2,479,703	644	3,850	29,062,854	7,154	4,062
	Dec	2,618,146	641	4,084	31,681,000	7,795	4,064
	31,681,000	7,795			179		

Changes in Revenue Per Assignment Puget Sound District 2015-2017



PSP Year to Date Revenue Per Assignment



Vessel Moves by Zone and LOA

SEPTEMBER 2017									SEPTEMBER 2016									SEPTEMBER 2015								
YTD	Totals	LOA	IntraHbr	≤ 30 mi	≤ 50 mi	≤ 75 mi	≤ 100mi	101+ mi	YTD	Totals	LOA	IntraHbr	≤ 30 mi	≤ 50 mi	≤ 75 mi	≤ 100mi	101+ mi	YTD	Totals	LOA	IntraHbr	≤ 30 mi	≤ 50 mi	≤ 75 mi	≤ 100mi	101+ mi
			1	2	3	4	5	6				1	2	3	4	5	6				1	2	3	4	5	6
235	17	Up to 500	2	4	7	4	0		227	32	Up to 500	7	8	12	5			365	17	Up to 500	2	1	4	10	0	0
573	62	500-599	11	16	6	17	12		618	49	500-599	12	9	5	16	7		709	76	500-599	19	11	14	20	12	0
1403	164	600-699	17	33	34	36	44		1488	158	600-699	17	23	34	38	46		1369	139	600-699	7	31	26	38	37	0
707	64	700-799	7	7	3	18	29		749	103	700-799	23	6	3	31	40		716	66	700-799	4	5	2	25	30	0
653	66	800-899	6	11	13	16	20		679	74	800-899	10	15	8	20	21		596	51	800-899	8	7	5	10	21	0
1295	187	900-999	27	9		96	55		1150	145	900-999	21	9	6	68	41		1325	156	900-999	19	14	1	74	48	0
527	41	1000--	1			40			775	89	1000--	25	10		36	18		628	85	1000--	28	8	0	31	18	0
	601		71	80	63	227	160	0	moves	650		115	80	68	214	173	0		590		87	77	52	208	166	0
YTD totals		5397	749	834	499	1842	1469	0	YTD totals		5690	966	797	536	1811	1576	0	YTD totals		5712	1050	745	482	1858	1563	10
YTD Averages		599.7	83.2	92.7	55.4	204.7	163.2	0.0	YTD Averages		632.2	107.3	88.6	59.6	201.2	175.1	0.0	YTD Averages		634.7	116.7	82.8	53.6	206.4	173.7	1.1
AUGUST 2017									AUGUST 2016									AUGUST 2015								
YTD	Totals	LOA	IntraHbr	≤ 30 mi	≤ 50 mi	≤ 75 mi	≤ 100mi	101+ mi	YTD	Totals	LOA	IntraHbr	≤ 30 mi	≤ 50 mi	≤ 75 mi	≤ 100mi	101+ mi	YTD	Totals	LOA	IntraHbr	≤ 30 mi	≤ 50 mi	≤ 75 mi	≤ 100mi	101+ mi
			1	2	3	4	5	6				1	2	3	4	5	6				1	2	3	4	5	6
218	30	Up to 500	3	7	8	10	2		195	39	Up to 500	11	8	11	7	2		348	19	Up to 500	5	4	4	6	0	0
511	65	500-599	11	10	1	29	14		569	73	500-599	23	8	3	27	12		633	88	500-599	25	10	14	26	13	0
1239	163	600-699	11	41	29	34	48		1330	153	600-699	12	29	31	35	46		1230	154	600-699	15	24	28	34	53	0
643	63	700-799	6	5	3	19	30		646	97	700-799	7	19	3	24	44		650	79	700-799	7	9	5	30	28	0
587	73	800-899	4	20	10	19	20		605	65	800-899	7	9	5	25	19		545	69	800-899	13	7	7	17	25	0
1108	206	900-999	35	6	1	95	69		1005	155	900-999	18	6	3	89	39		1169	182	900-999	22	8	1	100	51	0
486	43	1000--				43			686	99	1000--	28	9		40	22		543	93	1000--	30	10	0	34	19	0
	643		70	89	52	249	183	0	moves	681		106	88	56	247	184	0		684		117	72	59	247	189	0
YTD totals		4792	678	754	436	1615	1309	0	YTD totals		5036	851	717	468	1597	1403	0	YTD totals		5118	963	668	430	1650	1397	10
YTD Averages		599.0	84.8	94.3	54.5	201.9	163.6	0.0	YTD Averages		629.5	106.4	89.6	58.5	199.6	175.4	0.0	YTD Averages		639.8	120.4	83.5	53.8	206.3	174.6	1.3
JULY 2017									JULY 2016									JULY 2015								
YTD	Totals	LOA	IntraHbr	≤ 30 mi	≤ 50 mi	≤ 75 mi	≤ 100mi	101+ mi	YTD	Totals	LOA	IntraHbr	≤ 30 mi	≤ 50 mi	≤ 75 mi	≤ 100mi	101+ mi	YTD	Totals	LOA	IntraHbr	≤ 30 mi	≤ 50 mi	≤ 75 mi	≤ 100mi	101+ mi
			1	2	3	4	5	6				1	2	3	4	5	6				1	2	3	4	5	6
188	22	Up to 500	0	6	8	8	0	0	156	28	Up to 500	2	4	11	4	7		329	22	Up to 500	4	3	2	13	0	
446	86	500-599	14	23	8	29	12	0	496	102	500-599	8	9	3	21	61		545	68	500-599	19	4	12	21	12	
1076	142	600-699	9	31	28	30	44	0	1177	148	600-699	15	35	28	40	30		1076	145	600-699	16	29	31	30	39	
580	82	700-799	12	8	2	23	37	0	549	90	700-799	14	7	5	44	20		571	64	700-799	3	4	3	27	27	
514	76	800-899	7	23	9	18	19	0	540	104	800-899	12	12	9	30	41		476	63	800-899	9	6	6	13	29	
902	206	900-999	32	7	2	105	60	0	850	142	900-999	22	8	2	89	21		987	176	900-999	19	14	2	95	46	
443	44	1000--	0	0	0	44	0	0	587	75	1000--	25	7		43			450	83	1000--	25	10	0	32	16	
	658		74	98	57	257	172	0	moves	689		98	82	58	271	180	0		621		95	70	56	231	169	0
YTD totals		4149	608	665	384	1366	1126	0	YTD totals		4355	745	629	412	1350	1219	0	YTD totals		4434	846	596	371	1403	1208	10
YTD Averages		592.7	86.9	95.0	54.9	195.1	160.9	0.0	YTD Averages		622.1	106.4	89.9	58.9	192.9	174.1	0.0	YTD Averages		633.4	120.9	85.1	53.0	200.4	172.6	1.4

Vessel Moves by Zone and LOA

2017 JUNE 2017									JUNE 2016									JUNE 2015								
YTD	Totals	LOA	IntraHbr	≤ 30 mi	≤ 50 mi	≤ 75 mi	≤ 100mi	101+ mi	YTD	Totals	LOA	IntraHbr	≤ 30 mi	≤ 50 mi	≤ 75 mi	≤ 100mi	101+ mi	YTD	Totals	LOA	IntraHbr	≤ 30 mi	≤ 50 mi	≤ 75 mi	≤ 100mi	101+ mi
166	45	Up to 500	6	9	8	20	2		128	39	Up to 500	7	7	11	13	1		307	73	Up to 500	36	10	6	21	0	
360	61	500-599	12	10	5	23	11		394	67	500-599	20	11	4	25	7		477	108	500-599	23	25	12	35	13	
934	145	600-699	15	29	32	35	34		1029	194	600-699	25	43	37	39	50		931	184	600-699	25	33	32	31	63	
498	62	700-799	6	9	5	19	23		459	87	700-799	11	4	3	31	38		507	93	700-799	11	13	6	28	35	
438	72	800-899	12	12	8	16	24		436	77	800-899	9	12	8	26	22		413	60	800-899	11	5	7	13	24	
696	191	900-999	24	14	3	94	56		708	152	900-999	24	7	2	78	41		811	166	900-999	18	13	2	88	45	
399	49	1000--	1			48			512	94	1000--	25	9		42	18		367	87	1000--	28	9		33	17	
	625		76	83	61	255	150	0	moves	710		121	93	65	254	177	0		771		152	108	65	249	197	0
YTD totals	3491		534	567	327	1109	954	0	YTD totals	3666		647	547	354	1079	1039	0	YTD totals	3813		751	526	315	1172	1039	10
YTD Averages	581.8		89.0	94.5	54.5	184.8	159.0	0.0	YTD Averages	611.0		107.8	91.2	59.0	179.8	173.2	0.0	YTD Averages	635.5		125.2	87.7	52.5	195.3	173.2	1.7
2017 MAY 2017									MAY 2016									MAY 2015								
YTD	Totals	LOA	IntraHbr	≤ 30 mi	≤ 50 mi	≤ 75 mi	≤ 100mi	101+ mi	YTD	Totals	LOA	IntraHbr	≤ 30 mi	≤ 50 mi	≤ 75 mi	≤ 100mi	101+ mi	YTD	Totals	LOA	IntraHbr	≤ 30 mi	≤ 50 mi	≤ 75 mi	≤ 100mi	101+ mi
121	32	Up to 500	3	7	9	10	3		89	26	Up to 500	3	5	6	11	1	0	234	117	Up to 500	69	14	3	31	0	0
299	68	500-599	8	18	4	25	13		327	74	500-599	20	15	4	26	9	0	369	91	500-599	27	15	3	28	16	2
789	169	600-699	16	43	36	38	36		835	175	600-699	18	41	37	34	45	0	747	177	600-699	22	38	32	33	49	3
436	92	700-799	15	7	4	29	37		372	69	700-799	7	9	5	18	30	0	414	73	700-799	8	9	1	19	36	0
366	79	800-899	12	16	8	21	22		359	83	800-899	9	12	8	28	26	0	353	77	800-899	8	8	8	19	34	0
505	177	900-999	20	12		93	52		556	142	900-999	18	6	3	68	47	0	645	154	900-999	22	4	3	80	45	0
350	37	1000--	1	1		35			418	96	1000--	30	9	0	39	18	0	280	71	1000--	22	4	0	28	17	0
	654		75	104	61	251	163	0	moves	665		105	97	63	224	176	0		760		178	92	50	238	197	5
YTD totals	2866		458	484	266	854	804	0	YTD totals	2956		526	454	289	825	862	0	YTD totals	3042		599	418	250	923	842	10
YTD Averages	573.2		91.6	96.8	53.2	170.8	160.8	0.0	YTD Averages	591.2		105.2	90.8	57.8	165.0	172.4	0.0	YTD Averages	608.4		119.8	83.6	50.0	184.6	168.4	2.0
2017 APRIL 2017									APRIL 2016									APRIL 2015								
YTD	Totals	LOA	IntraHbr	≤ 30 mi	≤ 50 mi	≤ 75 mi	≤ 100mi	101+ mi	YTD	Totals	LOA	IntraHbr	≤ 30 mi	≤ 50 mi	≤ 75 mi	≤ 100mi	101+ mi	YTD	Totals	LOA	IntraHbr	≤ 30 mi	≤ 50 mi	≤ 75 mi	≤ 100mi	101+ mi
89	28	Up to 500	1	6	10	11	0		63	28	Up to 500	11	3	8	6	0	0	117	39	Up to 500	20	6	3	10	0	0
231	52	500-599	17	6	1	18	10		253	55	500-599	19	6	3	17	10	0	278	99	500-599	29	15	14	30	11	0
620	160	600-699	18	33	29	38	42		660	168	600-699	17	35	44	34	38	0	570	157	600-699	19	26	31	34	47	0
344	82	700-799	10	10	3	26	33		303	69	700-799	6	12	1	18	32	0	341	75	700-799	10	4	4	19	38	0
287	68	800-899	10	8	6	22	22		276	72	800-899	11	7	8	22	24	0	276	69	800-899	9	7	7	20	26	0
328	91	900-999	19	5		28	39		414	104	900-999	17	8	0	33	46	0	491	107	900-999	20	2	0	47	38	0
313	69	1000--	22	7		23	17		322	77	1000--	26	8	0	25	18	0	209	52	1000--	20	0	0	14	18	0
	-23	550	97	75	49	166	163	0		-25	573	107	79	64	155	168	0		-23	598	127	60	59	174	178	0
YTD totals	2212		383	380	205	603	641	0	YTD totals	2291		421	357	226	601	686	0	YTD totals	2282		421	326	200	685	645	5
YTD Averages	553.0		95.8	95.0	51.3	150.8	160.3	0.0	YTD Averages	572.8		105.3	89.3	56.5	150.3	171.5	0.0	YTD Averages	570.5		105.3	81.5	50.0	171.3	161.3	1.3

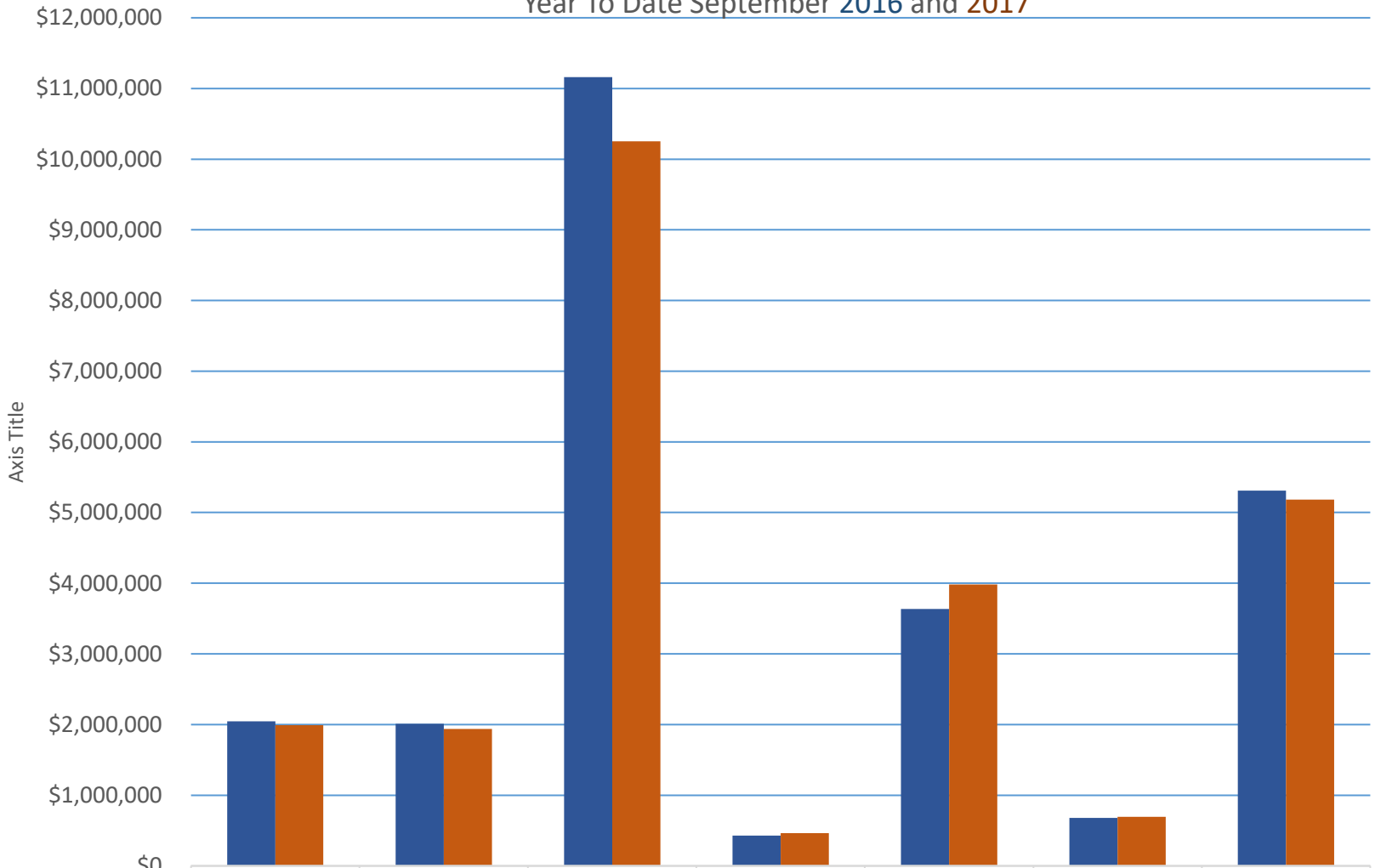
Vessel Moves by Zone and LOA

2017 MARCH 2017									2016 MARCH 2016									2015 MARCH 2015								
YTD	Totals	LOA	IntraHbr	≤30 mi	≤50 mi	≤75 mi	≤100mi	101+ mi	YTD	Totals	LOA	IntraHbr	≤30 mi	≤50 mi	≤75 mi	≤100mi	101+ mi	YTD	Totals	LOA	IntraHbr	≤30 mi	≤50 mi	≤75 mi	≤100mi	101+ mi
			1	2	3	4	5	6				1	2	3	4	5	6				1	2	3	4	5	6
61	27	Up to 500	0	8	10	9	0		35	15	Up to 500	1	4	8	2	0	0	78	51	Up to 500	27	6	8	10	0	0
179	54	500-599	12	8	4	18	12		198	65	500-599	15	11	2	28	9	0	179	68	500-599	21	6	10	19	12	0
460	150	600-699	19	33	28	28	42		492	176	600-699	20	38	35	35	48	0	413	149	600-699	23	33	20	32	41	0
262	88	700-799	10	20	3	21	34		234	71	700-799	7	13	1	14	36	0	266	89	700-799	19	3	3	19	45	0
219	61	800-899	11	7	5	17	21		204	78	800-899	9	11	10	18	30	0	207	75	800-899	7	8	5	22	33	0
237	83	900-999	16	5	1	25	36		310	106	900-999	21	6	2	29	48	0	384	130	900-999	23	24	4	44	35	0
244	85	1000--	27	9		25	24		245	80	1000--	29	9	0	24	18	0	157	59	1000--	19	5		22	13	0
moves	548		95	90	51	143	169	0	moves	591		102	92	58	150	189	0		621		139	85	50	168	179	0
2017 YTD totals	1662		286	305	156	437	478	0	2016 YTD totals	1718		314	278	162	446	518	0	2015 YTD totals	1684		294	266	141	511	467	5
YTD Averages	554.0		95.3	101.7	52.0	145.7	159.3	0.0	YTD Averages	572.7		104.7	92.7	54.0	148.7	172.7	0.0	YTD Averages	561.3		98.0	88.7	47.0	170.3	155.7	1.7
2017 FEBRUARY 2017									2016 FEBRUARY 2016									2015 FEBRUARY 2015								
YTD	Totals	LOA	IntraHbr	≤30 mi	≤50 mi	≤75 mi	≤100mi	101+ mi	YTD	Totals	LOA	IntraHbr	≤30 mi	≤50 mi	≤75 mi	≤100mi	101+ mi	YTD	Totals	LOA	IntraHbr	≤30 mi	≤50 mi	≤75 mi	≤100mi	101+ mi
			1	2	3	4	5	6				1	2	3	4	5	6				1	2	3	4	5	6
34	22	Up to 500	0	6	5	8	3		20	6	Up to 500	2	0	4	0	0		27	10	Up to 500	4		1	5		
125	69	500-599	3	11	4	13	38		133	65	500-599	18	20	3	15	9		111	49	500-599	10	10	12	12	5	
310	140	600-699	12	42	25	30	31		316	153	600-699	14	39	28	30	42		264	121	600-699	7	24	15	36	38	1
174	79	700-799	9	22	5	25	18		163	75	700-799	5	17	2	20	31		177	88	700-799	16	10	4	19	39	
158	80	800-899	12	5	12	17	34		126	62	800-899	7	13	5	15	22		132	66	800-899	1	15	4	15	31	
154	65	900-999	15	7	0	24	19		204	101	900-999	21	3	1	31	45		254	124	900-999	20	22	4	52	24	2
159	65	1000--	29	8	1	27			165	76	1000--	24	10		28	14		98	39	1000--	9	7		15	7	1
520			80	101	52	144	143	0	moves	538		91	102	43	139	163	0		497		67	88	40	154	144	4
YTD totals	1114		191	215	105	294	309	0	YTD totals	1127		212	186	104	296	329	0	YTD totals	1063		155	181	91	343	288	5
YTD Averages	557.0		95.5	107.5	52.5	147.0	154.5	0.0	YTD Averages	563.5		106.0	93.0	52.0	148.0	164.5	0.0	YTD Averages	531.5		77.5	90.5	45.5	171.5	144.0	2.5
2017 JANUARY 2017									2016 JAN 2016 2016									2015 JAN 2015 2015								
YTD	Totals	LOA	IntraHbr	≤30 mi	≤50 mi	≤75 mi	≤100mi	101+ mi	YTD	Totals	LOA	IntraHbr	≤30 mi	≤50 mi	≤75 mi	≤100mi	101+ mi	YTD	Totals	LOA	IntraHbr	≤30 mi	≤50 mi	≤75 mi	≤100mi	101+ mi
			1	2	3	4	5	6				1	2	3	4	5	6				1	2	3	4	5	6
	12	Up to 500	1	4	7					14	Up to 500	4	3	1	6				17	Up to 500	3	1	4	9		
	56	500-599	25	7	2	16	6			68	500-599	14	12	11	23	8			62	500-599	12	15	8	21	6	
	170	600-699	13	51	32	34	40			163	600-699	20	35	34	31	43			143	600-699	13	22	26	39	43	
	95	700-799	13	19	3	22	38			88	700-799	17	9	4	26	32			89	700-799	17	8	2	24	38	
	78	800-899	13	13	9	23	20			64	800-899	17	7	9	13	18			66	800-899	5	16	10	13	22	
	89	900-999	15	8		28	38			103	900-999	20	7	2	28	46			130	900-999	20	22	1	61	26	
	94	1000--	31	12		27	24			89	1000--	29	11		30	19			59	1000--	18	9		22	9	1
	594		111	114	53	150	166	0	moves	589		121	84	61	157	166	0		566		88	93	51	189	144	1

2017	Moves YTD	Moves/ Month	SHIP MOVES BY ZONE/DISTANCE						SHIP MOVES BY TYPE											
			IntraHbr	≤ 30 mi	≤50 mi	≤75 mi	≤100mi	101+ mi	Bulker	Car Carrier	Container	General	Naval	Other	Passngr	Reefer	Ro-Ro	Tanker	ATB Memo	Totals
			1	2	3	4	5	6												
Jan		594	111	114	53	150	166	0	110	43	220	11	5	4	1	0	17	183	47	594
Feb	1,114	520	80	101	52	144	143		93	36	209	10	0	6	1	0	17	148	46	520
Mar	1,662	548	95	90	51	143	169	0	107	44	215	18	3	3	0	0	21	137	40	548
Apr	2,212	550	97	75	49	166	163		99	45	203	1	0	5	4	2	18	173	53	550
May	2,866	654	75	104	61	251	163		95	35	184	27	1	8	72	0	18	214	77	654
June	3,491	625	76	83	61	255	150		60	36	186	4	2	19	89	5	23	201	64	625
July	4,149	658	74	98	57	257	172	0	87	42	195	18	1	3	101	0	18	193	67	658
Aug	4,792	643	70	89	52	249	183		57	36	214	16	0	13	85	0	32	191	80	644
Sept	5,393	601	71	80	63	227	160	0	69	38	184	11	0	6	85	1	20	187	60	601
			749	834	499	1842	1469	0	777	355	1810	116	12	67	438	8	184	1627	534	5394
@Sep2017/2016	change	(293)	(217)	37	(37)	31	(107)	0	(49)	(31)	(211)	19	7	(7)	32	(2)	(5)	(45)	(102)	(292)
2016	Moves YTD	Moves/ Month	SHIP MOVES BY ZONE/DISTANCE						SHIP MOVES BY TYPE											
			IntraHbr	≤ 30 mi	≤50 mi	≤75 mi	≤100mi	101+ mi	Bulker	Car Carrier	Container	General	Naval	Other	Passngr	Reefer	Ro-Ro	Tanker	ATB Memo	Totals
			1	2	3	4	5	6												
Jan		589	121	84	61	157	166	0	88	39	232	14	4	1	1	0	19	191	76	589
Feb	1,127	538	91	102	43	139	163	0	90	45	212	7	0	0	2	0	18	164	54	538
Mar	1,718	591	102	92	58	150	189	0	97	52	236	8	0	1	0	0	20	177	67	591
Apr	2,291	573	107	79	64	155	168	0	70	41	216	8	0	11	2	0	25	200	64	573
May	2,956	665	105	97	63	224	176		84	41	232	9	0	20	64	0	18	197	71	665
June	3,666	710	121	93	65	254	177	0	101	42	221	17	0	11	84	7	29	198	87	710
July	4,355	689	98	82	58	271	180	0	86	47	223	8	0	3	97	3	20	202	85	689
Aug	5,036	681	106	88	56	247	184		105	39	229	17	1	15	85	0	21	169	67	681
Sept	5,686	650	115	80	68	214	173		105	40	220	9	0	12	71	0	19	174	65	715
			966	797	536	1811	1576	0	826	386	2021	97	5	74	406	10	189	1672	636	5751
@Sep2016/2015	change	(28)	(84)	52	54	(47)	13	(10)	42	(6)	(27)	9	4	(11)	(90)	3	1	(19)	(29)	(43)
2015	Moves YTD	Moves/ Month	SHIP MOVES BY ZONE/DISTANCE						SHIP MOVES BY TYPE											
			IntraHbr	≤ 30 mi	≤50 mi	≤75 mi	≤100mi	101+ mi	Bulker	Car Carrier	Container	General	Naval	Other	Passngr	Reefer	Ro-Ro	Tanker	ATB Memo	Totals
			1	2	3	4	5	6												
Jan		566	88	93	51	189	144	1	102	35	219	23		4	1		18	164	63	566
Feb 497	1,067	501	67	88	40	154	144	4	70	43	209	5		7	1		21	145	51	501
Mar 621	1,690	623	139	85	50	168	179	0	120	45	234	14	1	38			23	148	53	623
Apr	2,288	598	127	60	59	174	178	0	78	43	224	16	1	37			24	175	68	598
May	3,048	760	178	92	50	238	197	5	76	54	232	23	1	103	62	2	20	187	83	760
June	3,819	771	152	108	65	249	197	0	70	67	232	6	3	71	86	2	21	213	108	771
July	4,440	621	95	70	56	231	169	0	39	50	225	19	4	6	86		19	173	73	621
Aug	5,124	684	117	72	59	247	189	0	68	47	241	2		11	90		19	206	86	684
Sept	5,714	590	87	77	52	208	166	0	46	37	218	25		3	63		24	174	80	670
			1050	745	482	1858	1563	10	669	421	2034	133	10	280	389	4	189	1585	665	5794
@Sep2015/2014	change	(2)	169	(61)	(11)	(34)	(81)	10	(74)	36	(89)	(3)	0	244	20	1	(11)	(126)		78

← correcter

Revenue by Vessel Type
Year To Date September 2016 and 2017



	Bulker	Car Carrier	Container	General Purpose	Passenger	Ro-Ro	Tanker
■ 2016	\$2,046,568	\$2,010,451	\$11,161,525	\$429,480	\$3,636,366	\$677,510	\$5,311,315
■ 2017	\$1,992,154	\$1,939,196	\$10,253,601	\$464,725	\$3,980,759	\$692,916	\$5,180,927

