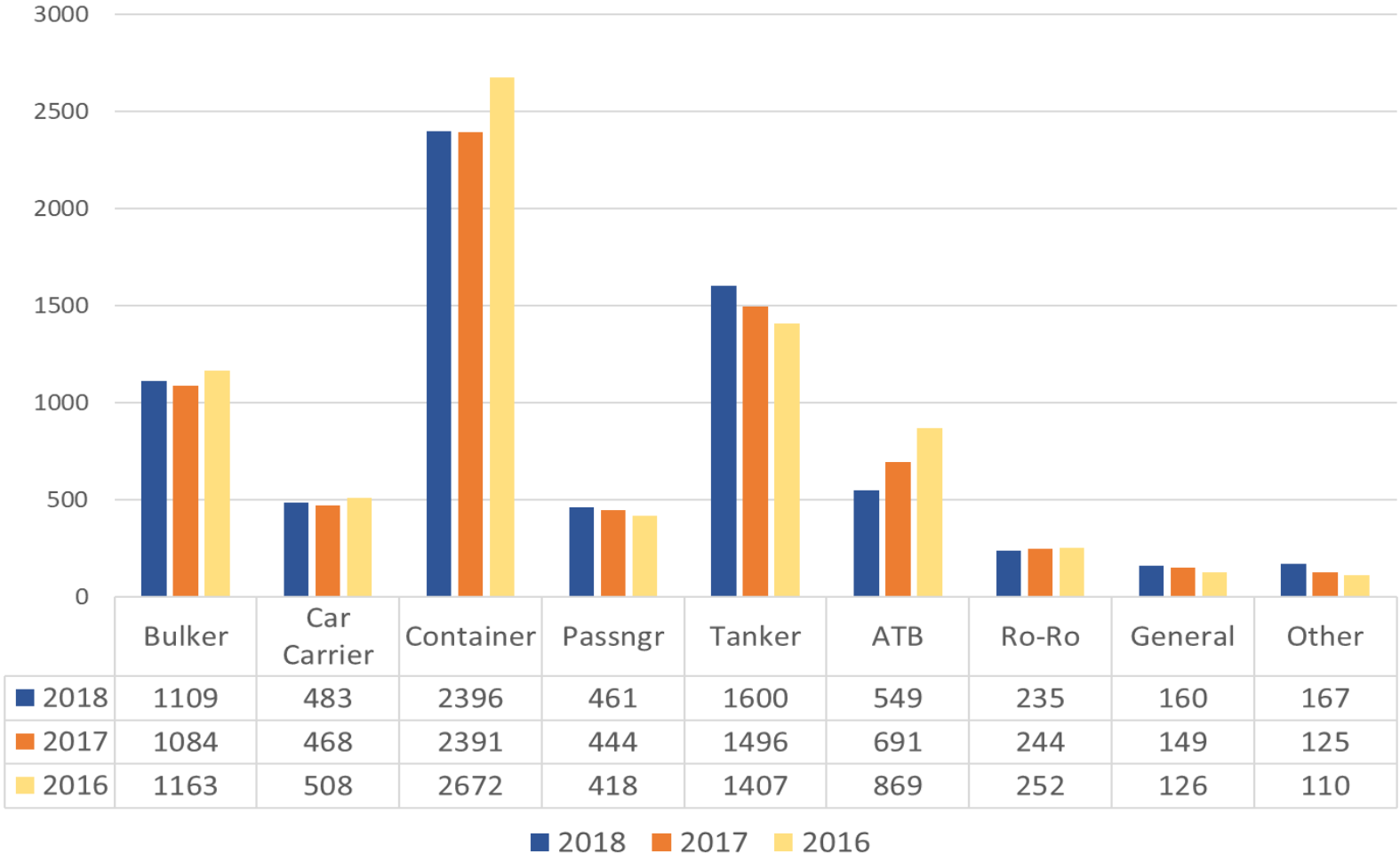


Puget Sound District Selected Comparatives Summary
2016-2018

PSP 2018	January	February	March	April	(cruise season) May	(cruise season) June	6 mo to date	(cruise season) July	(cruise season) August	(cruise season) Sept	Oct	Nov	Dec	12 months to date
Tariff Revenue-Trans	\$2,371,509	\$2,279,245	\$2,357,526	\$2,197,452	\$3,001,506	\$3,496,544	\$15,703,782	\$3,419,901	\$3,237,698	\$3,172,712	\$2,563,816	\$2,402,816	\$2,459,913	\$32,960,638
RPA-Revenue per Assign	\$3,939	\$4,099	\$4,044	\$4,123	\$4,473	\$4,946	\$4,301	\$5,029	\$4,906	\$5,093	\$4,390	\$4,337	\$4,308	\$4,500
# of licensed pilots w/o Pres	50	50	50	50	49	49	49	49	49	49	49	49	49	49
Average Assgn/pilot on rotation	12.30	11.35	11.90	10.88	13.98	15.04	12.58	14.38	14.04	13.26	12.34	11.54	11.90	
# pilots with < 6 jobs (+1=Pres)	3 + 1	2 + 1	5 + 1	8 + 1	4 + 1	4 + 1		4 + 1	5 + 1	4 + 1	9 + 1	8 + 1	5 + 1	
2nd pilot jobs	34	34	35	34	53	51	241	44	48	43	32	35	36	479
Repos	111	112	129	120	147	134	753	159	155	137	114	119	113	1,550
Assignments	602	556	583	533	671	707	3652	680	660	623	584	554	571	7,324
Assignment change	(4)	27	13	(32)	7	71	82	16	3	15	20	(43)	(18)	75
Moves	579	542	563	525	656	700	3565	670	654	611	571	544	547	7,162
Moves change	(15)	22	15	(25)	2	75	74	12	11	10	21	(25)	(34)	69
Cancellations	23	14	20	8	15	7	87	10	6	12	13	10	24	162
Tonnage Revenue	\$1,364,136	\$1,306,390	\$1,350,510	\$1,278,904	\$1,836,056	\$2,219,302	\$9,355,298	\$2,196,708	\$2,057,530	\$2,023,362	\$1,517,609	\$1,434,592	\$1,482,787	20,067,886
Tonnage Revenue per Move	\$2,356	\$2,410	\$2,399	\$2,436	\$2,799	\$3,170	\$2,624	\$3,279	\$3,146	\$3,312	\$2,658	\$2,637	\$2,711	\$2,802
Gross Tonnage Moved	27,962,363	26,106,585	27,303,886	25,704,844	34,965,346	39,710,847	181,753,871	38,776,957	36,491,140	35,477,327	28,983,077	28,603,983	\$29,720,670	379,807,025
PSP 2017	January	February	March	April	(cruise season) May	(cruise season) June	6 mo to date	(cruise season) July	(cruise season) August	(cruise season) Sept	Oct	Nov	Dec	12 months to date
Tariff Revenue-Trans	\$2,488,326	\$2,183,031	\$2,273,861	\$2,315,825	\$2,968,949	\$3,060,089	\$15,290,081	\$3,235,074	\$3,089,703	\$2,948,218	\$2,357,919	\$2,370,766	\$2,383,967	\$31,675,728
RPA-Revenue per Assign	\$4,106	\$4,127	\$3,989	\$4,099	\$4,471	\$4,811	\$4,283	\$4,872	\$4,703	\$4,849	\$4,181	\$3,971	\$4,048	\$4,370
# of licensed pilots w/o Pres	51	51	51	51	51	51	51	51	51	51	51	51	51	51
Average Assgn/pilot on rotation	11.88	10.37	11.18	11.08	13.02	12.72	11.71	13.02	13.14	11.92	11.06	11.94	11.85	
# pilots with < 6 jobs (+1=Pres)	2 + 1	5 + 1	3 + 1	5 + 1	7+1	2 + 1		1 + 1	2 + 1	5 + 1	6 + 1	7 + 1	5	
2nd pilot jobs							276	41	40	35	37	38	42	429
Repos	114	102	94	104	142	166	722	171	151	122	141	110	137	1554
Assignments	606	529	570	565	664	636	3570	664	657	608	564	597	589	7249
Assignment change	1	(18)	(37)	-19	-8	(89)	(170)	(30)	(30)	(45)	(53)	(64)	(21)	(413)
Moves	594	520	548	550	654	625	3491	658	643	601	550	569	581	7093
Moves change	5	(18)	(43)	(23)	(11)	(85)	(175)	(31)	(38)	(49)	(56)	(74)	(9)	(432)
Cancellations	12	9	22	15	10	11	79	6	14	7	14	28	8	156
Tonnage Revenue	\$1,456,699	\$1,256,480	\$1,261,965	\$1,305,187	\$1,808,684	\$1,931,955	\$9,020,970	\$2,027,024	\$1,914,728	\$1,870,767	\$1,366,177	\$1,383,992	\$1,355,941	\$18,939,599
Tonnage Revenue per Move	\$2,452	\$2,416	\$2,303	\$2,373	\$2,766	\$3,091	\$2,584	\$3,081	\$2,978	\$3,113	\$2,484	\$2,432	\$2,334	\$2,670
Gross Tonnage Moved	31,303,842	27,225,601	27,446,553	27,831,924	33,410,880	34,205,855	181,424,655	36,250,722	34,174,789	33,441,336	26,631,239	27,480,518	\$27,970,048	367,373,307
PSP 2016	January	February	March	April	(cruise season) May	(cruise season) June	6 mo to date	(cruise season) July	(cruise season) August	(cruise season) Sept	Oct	Nov	Dec	12 months to date
Tariff Revenue-Trans	\$2,443,846	\$2,269,624	\$2,419,887	\$2,350,195	\$3,039,515	\$3,215,179	\$15,738,245	\$3,320,803	\$3,261,886	\$3,019,483	\$2,571,409	\$2,622,922	\$2,446,187	\$32,980,935
RPA-Revenue per Assign	\$4,039	\$4,149	\$3,987	\$4,024	\$4,523	\$4,435	\$4,208	\$4,785	\$4,748	\$4,624	\$4,168	\$3,968	\$4,010	\$4,304
# of licensed pilots w/o Pres	51	51	50	51	51	51	51	51	51	51	51	51	51	51
Average Assgn/pilot	12.26	10.73	12.14	11.45	13.18	14.22	12.33	13.61	13.47	12.80	12.10	13.22	11.00	
# pilots with < 6 jobs(+1=Pres)	6 + 1	8 + 1	3 + 1	7 + 1	2 + 1	4 + 1		1 + 1	1+1	3 + 1	5 + 1	3 + 1	11.96	
2nd pilot jobs							346	52	60	56	50	55	50	669
Repos	110	106	106	87	131	130	670	121	118	102	115	110	117	1353
Assignments	605	547	607	584	672	725	3740	694	687	653	617	661	610	7,662
Assignment change	28	30	(32)	(36)	(102)	(66)	(178)	62	(6)	52	(49)	17	(31)	(133)
Moves	589	538	591	573	665	710	3666	689	681	650	606	643	590	7,525
Moves change	23	37	(32)	(25)	(95)	(61)	(153)	68	(3)	60	(47)	14	(41)	(102)
Cancellations	16	9	16	11	7	15	74	5	6	3	11	18	20	137
Tonnage Revenue	\$1,329,440	\$1,296,111	\$1,345,308	\$1,322,435	\$1,832,625	\$1,923,132	\$9,049,051	\$2,062,503	\$2,012,001	\$1,849,337	\$1,484,111	\$1,484,173	\$1,404,181	\$19,345,357
Tonnage Revenue per Move	\$2,257	\$2,409	\$2,276	\$2,308	\$2,756	\$2,709	\$2,468	\$2,993	\$2,954	\$2,845	\$2,449	\$2,308	\$2,380	\$2,571
Gross Tonnage Moved	29,609,106	27,830,304	29,667,076	28,676,198	35,896,326	37,105,794	188,784,804	39,040,725	37,131,259	35,516,867	30,489,031	32,094,958	30,447,508	393,505,152

2018			Jan	Feb	Mar	Apr	May	Jun	Jul	Aug	Sep	Oct	Nov	Dec	2018			
Pilot Code	Actual Trips PSP Earned Revenue Report Detail	Lic or Ret Date	Actual Assign	Actual Assign	Actual Assign	Actual Assign	Actual Assign	Actual Assign	Actual Assign	Actual Assign	Actual Assign	Actual Assign	Actual Assign	Actual Assign	YTD Actual Assign	Average Assign 145/12=12.1 >12.1 in Bold	(under) over TAL 12*12.1=145	
5	ANA Anacker, D.S.	Lic. 3/27/12	11	9	15	5	15	17	18	15	5	12	5	13	140	#####	(5)	
5	ANT Anthony, Michael	Lic. 7/24/12	16	8	13	10	2	17	12	10	16	10	11	11	136	#####	(9) BPC/TEC	
5	ARN Arnold, J. E.		6	14	19	15	15	4	21	14	14	17	3	18	160	#####	15	
5	BEN Bendixen, Sandy	Lic. 9/20/18							Licensed 9/20/18			7	9	10	9	35	#####	(13) New pilot
5	BOU Bouma, Blair		16	15	0	0	0	0	5	13	15	13	14	12	103	#####	(42) PSP Bd 4.75 mo NFFD	
5	BRO Brouillard, Dan	Lic. 7/31/13	14	9	19	13	5	17	14	17	14	6	13	12	153	#####	8	
5	BRU Brusco, David		10	5	12	11	17	5	12	11	13	13	15	7	131	#####	(14)	
5	BUJ Bujacich, J.P.	Ret. Oct?	12	11	9	14	19	19	25	22	10	16	13	10	180	#####	35	
5	CAI Carlson, I.J.		12	13	4	4	3	15	16	7	6	2	3	5	90	#####	(55) PSP V.P.	
5	CAJ Carstensen, J	Lic. 9/30/15	15	13	10	13	13	14	16	10	13	17	17	11	162	#####	17	
5	CAW Carley, W. Bud	Lic. 1/10/13	11	9	15	3	16	20	10	13	7	3	17	19	143	#####	(2)	
5	COE Coe, F.A.	Ret. 5/1/18	6	11	8	1	Retired 5/1/18								26	#####	(22) took comp days	
4	COL Coleman, S	Lic. 8/27/14	11	6	9	6	12	14	13	12	13	9	6	9	120	#####	(25) PSP Sec/Treas	
5	COR Coryell, T.D.	Lic. 12/13/13	17	8	16	17	13	17	8	18	12	13	12	10	161	#####	16	
5	EME Emerson, L. P.		19	14	14	13	17	20	23	25	22	20	19	17	223	#####	78	
5	ENF Engstrom, F. E.	Lic. 11/15/12	14	12	10	14	15	17	17	12	19	4	15	12	161	#####	16	
3	GAL Galvin, Jamie	Lic. 11/11/14	13	9	16	11	15	15	11	19	16	16	9	8	158	#####	13	
5	GRD Grobschmit, D.W.		15	11	15	16	18	16	12	15	16	19	12	9	174	#####	29	
5	HAJ Hannuksela, J		0	0	8	15	14	17	11	16	16	16	17	13	143	#####	(2) 2 mo NFFD	
5	HAR Harris, J. B.		17	12	12	11	19	16	14	19	11	14	13	11	169	#####	24	
1	HEJ Henderson, J. David	Lic. 7/6/17	11	7	5	14	12	9	12	9	16	17	14	11	137	#####	(8)	
5	HEN Henshaw, B. F.		14	11	13	12	16	16	3	14	20	12	16	13	160	#####	15	
1	HUP Hunter, P.V	Lic. 10/13/17	8	10	6	6	8	11	10	12	9	12	11	13	116	#####	(29)	
3	JEN Jensen, Brian	Lic. 12/22/14	15	11	12	6	10	17	13	14	14	10	14	12	148	#####	3	
5	KAL Kalvoy, J.E.		14	16	12	2	18	16	20	20	6	3	16	13	156	#####	11 Exam Com	
5	KEA Kearns, J.		13	14	19	10	17	0	0	0	4	7	17	19	116	#####	(29) 4.67 mo NFFD	
2	KEN Kelleher, N.T.	Lic. 4/14/16	7	11	7	12	19	6	19	17	13	14	6	13	144	#####	(1)	
5	KEP Kelly, P.S.		19	5	14	9	14	17	16	14	16	23	15	6	168	#####	23	
5	KLA Klapperich, E.C.		10	11	15	11	15	13	10	30	11	12	16	10	164	#####	19	
4	LIC Lichty, E.C.	Lic. 5/1/14	6	14	6	16	18	15	17	6	18	16	12	22	166	#####	21	
3	LOB Lowe, Brad	Lic. 9/23/15	16	12	7	13	17	18	15	5	12	16	10	15	156	#####	11	
5	LOW Lowery, W.W.	Lic. 2/11/13	17	14	8	20	17	23	9	2	18	4	25	22	179	#####	34	
5	MAR Marmol, E.	Ret. 9/29/18	9	11	12	11	11	11	6	0	0	Retired 9/29		71	#####	(38) TEC—took comp days		
5	MAY Mayer, D. W.		13	12	20	11	10	18	13	14	14	20	13	10	168	#####	23 TEC	
5	MOT Moreno, S.		13	19	10	10	10	18	17	16	15	9	17	18	172	#####	27	
0	MYE Myers, R.	Lic. 11/28/17	15	7	8	4	12	11	12	13	9	10	9	9	119	#####	(26)	
5	NEW Newman, A. J.		3	17	23	15	14	15	17	22	12	13	3	19	173	#####	28 PSP Board	
1	ROU Rounds, Chris	Lic. 7/11/17	12	10	8	13	11	13	16	11	16	11	9	12	142	#####	(3)	
5	SAN Sanders, D. A.		18	12	8	11	12	18	8	0	0	0	0	0	87	#####	(58) 5.67 mo NFFD	
5	SCO Scoggins, J		14	14	17	12	6	16	16	17	13	0	0	0	125	#####	(20) taking comp days	
5	SCR Scragg, J.		11	5	9	8	12	10	6	11	15	9	11	8	115	#####	(30) BPC/TEC	
5	SEM Semler, J. R.		8	12	10	9	17	22	16	15	12	14	10	17	162	#####	17 PSP Board	
5	SES Semler, S.		12	15	14	11	16	20	14	16	15	9	15	15	172	#####	27	
5	SEY Seymour, L.		14	13	12	12	16	14	23	17	13	16	13	9	172	#####	27	
5	SHA Shaffer, D. L.		10	15	22	15	22	12	14	13	17	23	13	13	189	#####	44	
5	SHJ Shaffer, J. A.		13	16	16	9	20	13	17	20	21	14	17	18	194	#####	49	
5	SHU Shuler, M.	Ret. Oct?	2	6	2	3	14	15	17	12	0	0	0	0	71	#####	(74) taking comp days	
5	SLI Sliker, W.J.		14	9	13	13	14	13	13	15	9	24	6	10	153	#####	8	
5	SOR Soriano, D. B.		7	14	14	12	17	6	19	16	18	13	7	16	159	#####	14	
5	THG Thoreson, George		13	11	13	16	14	17	14	14	9	20	15	12	168	#####	23 PSP Board	
5	VON vonBrandenfels, E. M.	president	0	0	0	0	0	5	3	0	0	0	0	0	9	#####	PSP President	
5	WIG Wildes, G. R.	Ret. Oct?	16	13	4	15	14	19	17	7	17	3	0	0	125	#####	(20) taking comp days	
Total Assignments/ Month			602	556	583	533	671	707	680	660	623	584	554	571	7324	#####		
Number of licensed PS pilots			51	51	51	51	50	50	50	50	50	50	50	50	51	50.4		
President			1	1	1	1	1	1	1	1	1	1	1	1	1			
Medical circumstances:			1	1	1	1	1	2	3	2	2	1.67	1	1				
Pilots taking comp days→retirement						1				1	2	3	3	3				
Available to pilot			49	49	49	49	48	47	46.0	47	47	47.33	48	48				
# of Pilots with < 6 jobs(+1=Pres)			3 + 1	4 + 1	5 + 1	8 + 1	4 + 1	4 + 1	3 + 1	5 + 1	4 + 1	9 + 1	8 + 1	5 + 1				
Pilots w/>5 assgns & their avg # of trips			47P 12.6	46P 11.76	45P 12.6	42P 12.2	45P 14.7	45P 15.4	46P; 14.5	44P; 14.8	45P; 13.7	40P; 14.1	41P; 13.2	44P; 12.9				
Average Assgn/pilot on rotation			12.3	11.35	11.90	10.88	13.98	15.04	14.78	14.04	13.26	12.34	11.54	11.90	12.60			
Cancellations			23	13	20	8	15	8	10	6	12	13	10	24	162			
PSP LOA Report (MOVES)			579	543	563	525	656	699	670	654	611	571	544	547	7162			
Avg moves/pilot on rotation			11.82	11.08	11.49	10.71	13.67	14.87	14.57	13.91	13.00	12.06	11.33	11.40				

Puget Sound District
Moves by Vessel Type



TONNAGE, NUMBER OF MOVES -- BY VESSEL TYPE
2018 - 2015

	<u>Bulker</u>		<u>Car Carrier</u>		<u>Container</u>		<u>General</u>		<u>Naval</u>		<u>Other</u>		<u>Passenger</u>		<u>Reefer</u>		<u>Ro-Ro</u>		<u>Tanker</u>		<u>ATB</u>		<u>Total Tonnage</u>	
	Tonnage	# moves	Tonnage	# moves	Tonnage	# moves	Tonnage	# moves	Tonnage	# moves	Tonnage	# moves	Tonnage	# moves	Tonnage	# moves	Tonnage	# moves	Tonnage	# moves	# moves	% all Tankers	Tonnage	# moves
2018	36,734,440	1,109	29,749,874	483	165,878,450	2,396	458,389	160	9,800	8	1,338,523	148	44,007,774	461	98,848	11	8,376,931	235	93,153,996	1,600	549	26%	379,807,025	7,162
YTD Avg/Month	3,061,203	92	2,479,156	40	13,823,204	200	38,199	13	1,400	1	111,544	12	3,667,315	38	10,983	1	698,078	20	7,762,833	133	46		31,650,585	597
CHANGE FROM																								
Δ 2018/2017	810,715	25	2,120,683	15	4,561,959	5	18,925	11	(539,704)	(6)	806,179	70	2,101,154	17	(129,180)	(22)	(246,547)	(9)	2,929,533	144	(182)		12,433,717	70
2017	35,923,725	1,084	27,629,191	468	161,316,491	2,391	439,464	149	549,504	14	532,344	78	41,906,620	444	228,028	33	8,623,478	244	90,224,463	1,456	731	33%	367,373,308	7,092
YTD Avg/Month	2,993,644	90	2,302,433	39	13,443,041	199	36,622	12	49,955	1	44,362	7	3,492,218	37	20,730	3	718,623	20	7,518,705	121	61	0	30,614,442	594
CHANGE FROM																								
Δ 2017/2016	(1,700,764)	(78)	(1,535,962)	(40)	(25,983,065)	(281)	(2,589,960)	21	373,341	4	(132,980)	(1)	3,426,412	26	70,237	13	(319,161)	(8)	1,030,807	53	(142)		(27,361,095)	(432)
2016	37,624,489	1,162	29,165,153	508	187,299,556	2,672	3,029,424	128	176,163	10	665,324	79	38,480,208	418	157,791	20	8,942,639	252	89,193,656	1,403	873	38%	394,734,403	7,524
YTD Avg	2,945,489	93	2,428,029	43	15,638,061	225	255,218	11	34,770	3	66,383	8	3,848,021	42	9,208	1	761,299	21	7,322,274	115	72	0	33,280,937	629
CHANGE FROM																								
Δ 2016/2015	9,051,095	214	(1,373,706)	(33)	8,534,499	(60)	(734,179)	(33)	110,039	-	(2,746,772)	(351)	3,616,124	29	82,507	12	87,250	(1)	2,034,233	129	(8)		18,661,090	(103)

Puget Sound District
Vessel Moves by LOA and Zone
2016-2018

2018	DECEMBER 2018							
	YTD	Month	LOA	IntraHbr 1	≤ 30 mi 2	≤50 mi 3	≤75 mi 4	≤100mi 5
416	25	Up to 500	3	8	8	6	0	0
666	54	500-599	17	9	3	16	9	0
1834	166	600-699	20	48	28	35	35	0
1001	61	700-799	7	12	3	15	24	0
886	82	800-899	7	17	7	31	20	0
1642	84	900-999	11	5	0	39	29	0
717	20	1000-1099	4	0	0	7	9	0
	33	1100-1199	5	2	0	19	7	0
	22	1200----	8	2	0	8	4	0
7162	547		82	103	49	176	137	0
YTD totals		7162	1053	1029	683	2518	1875	4
YTD Averages		596.8	87.8	85.8	56.9	209.8	156.3	0.3
		1.0%	7.0%	-7.8%	2.4%	7.7%	-4.2%	#DIV/0!

YTD	Month	DECEMBER 2017						
		LOA	IntraHbr 1	≤ 30 mi 2	≤50 mi 3	≤75 mi 4	≤100mi 5	101+ mi 6
330	35	Up to 500	3	6	14	11	1	
738	52	500-599	10	6	3	22	11	
1880	168	600-699	14	37	34	48	35	
996	90	700-799	14	19	4	14	39	
822	71	800-899	13	14	7	19	18	
1713	139	900-999	34	6	2	38	59	
614	26	1000-1099				26		
		1100-1199						
		1200----						
assignmtns	581		88	88	64	178	163	0
YTD totals		7093	984	1116	667	2339	1957	0
YTD Averages		591.1	82.0	93.0	55.6	194.9	163.1	0.0
		-6.2%	-22.2%	-3.3%	-9.5%	0.1%	-5.5%	

YTD	DECEMBER 2016							
	Totals	LOA	IntraHbr 1	≤ 30 mi 2	≤50 mi 3	≤75 mi 4	≤100mi 5	101+ mi 6
310	20	Up to 500	6	4	6	4		
776	44	500-599	8	7	3	17	9	
2056	205	600-699	19	53	48	49	36	
1051	91	700-799	8	26		24	33	
893	68	800-899	10	12	8	20	18	
1433	99	900-999	21	3		33	42	
1044	83	1000-1099	25	9		31	18	
		1100-1199						
		1200----						
assignmtns	610		97	114	65	178	156	0
YTD totals		7563	1265	1154	737	2337	2070	0
YTD Averages		630.3	105.4	96.2	61.4	194.8	172.5	0.0
		-0.8%	-11.4%	11.2%	7.0%	-1.0%	-1.1%	-100.0%

2018	NOVEMBER 2018							
	YTD	Month	LOA	IntraHbr 1	≤ 30 mi 2	≤50 mi 3	≤75 mi 4	≤100mi 5
391	28	Up to 500	6	7	4	11	0	0
612	58	500-599	11	15	6	20	6	0
1668	146	600-699	16	32	20	38	40	0
940	62	700-799	9	5	1	17	30	0
804	81	800-899	13	11	8	27	22	0
1558	105	900-999	16	9	2	50	28	0
642	22	1000-1099	4	0	0	6	12	0
	29	1100-1199	7	2	0	13	7	0
	13	1200----	3	0	0	8	2	0
6615	544		85	81	41	190	147	0
YTD totals		6615	971	926	634	2342	1738	4
YTD Averages		601.4	88.3	84.2	57.6	212.9	158.0	0.4

YTD	Month	NOVEMBER 2017						
		LOA	IntraHbr 1	≤ 30 mi 2	≤50 mi 3	≤75 mi 4	≤100mi 5	101+ mi 6
295	23	Up to 500	2	7	7	7	0	0
686	54	500-599	12	8	7	14	13	0
1712	170	600-699	15	56	29	37	33	0
906	105	700-799	12	22	7	25	39	0
751	50	800-899	5	6	2	19	18	0
1574	136	900-999	26	11	2	40	57	0
588	31	1000-1099	2			27	2	0
		1100-1199						
		1200----						
	569		74	110	54	169	162	0
YTD totals		6512	896	1028	603	2161	1794	0
YTD Averages		592.0	81.5	93.5	54.8	196.5	163.1	0.0

YTD	NOVEMBER 2016							
	Totals	LOA	IntraHbr 1	≤ 30 mi 2	≤50 mi 3	≤75 mi 4	≤100mi 5	101+ mi 6
290	28	Up to 500	0	7	11	9	1	0
732	69	500-599	10	20	9	21	9	0
1851	199	600-699	27	49	37	38	48	0
960	106	700-799	16	18	2	28	42	0
825	75	800-899	8	15	9	23	20	0
1334	88	900-999	13	10	5	29	31	0
961	96	1000-1099	34	11	0	27	24	0
		1100-1199						
		1200----						
	661		108	130	73	175	175	0
YTD totals		6953	1168	1040	672	2159	1914	0
YTD Averages		632.1	106.2	94.5	61.1	196.3	174.0	0.0

2018	OCTOBER 2018							
	YTD	Totals	LOA	IntraHbr 1	≤ 30 mi 2	≤50 mi 3	≤75 mi 4	≤100mi 5
363	33	Up to 500	3	9	10	11	0	0
554	42	500-599	6	8	7	16	5	0
1522	156	600-699	18	25	27	47	39	0
878	87	700-799	17	10	4	21	35	0
723	85	800-899	9	17	13	25	21	0
1453	100	900-999	14	5	1	52	26	2
578	32	1000-1099	9	0	0	6	17	0
	30	1100-1199	5	2	0	18	5	0
	6	1200----	0	0	0	6	0	0
6071	571		81	76	62	202	148	2
YTD totals		6071	886	845	593	2152	1591	4
YTD Averages		607.1	88.6	84.5	59.3	215.2	159.1	0.4

2017	OCTOBER 2017							
	YTD	Month	LOA	IntraHbr 1	≤ 30 mi 2	≤50 mi 3	≤75 mi 4	≤100mi 5
272	37	Up to 500	6	4	7	16	4	
632	59	500-599	11	10	6	24	8	
1542	139	600-699	13	32	29	30	35	
801	94	700-799	13	16	5	24	36	
701	48	800-899	1	12	2	15	18	
1438	143	900-999	29	10	1	41	62	
557	30	1000-1099	0			30		
		1100-1199						
		1200----						
	550		73	84	50	150	163	0
YTD		5943	822	918	549	1992	1632	0
YTD Averages			82.2	91.8	54.9	199.2	163.2	0.0

2016	OCTOBER 2016							
	YTD	Month	LOA	IntraHbr 1	≤ 30 mi 2	≤50 mi 3	≤75 mi 4	≤100mi 5
262	35	Up to 500	5	7	10	11	2	
663	45	500-599	7	14	1	13	10	
1652	164	600-699	15	41	38	39	31	
854	105	700-799	13	23	4	27	38	
750	71	800-899	8	13	9	21	20	
1246	96	900-999	18	5	1	29	43	
865	90	1000-1099	28	10		33	19	
		1100-1199						
		1200----						
	606		94	113	63	173	163	0
YTD		6292	1060	910	599	1984	1739	0
YTD Averages		629.2	106.0	91.0	59.9	198.4	173.9	0.0

Puget Sound District
Vessel Moves by LOA and Zone
2016-2018

2018	SEPTEMBER 2018								
	YTD	Totals	LOA	IntraHbr 1	≤ 30 mi 2	≤50 mi 3	≤75 mi 4	≤100mi 5	101+ mi 6
330	39	Up to 500	4	8	7	16	4		
512	55	500-599	9	9	6	20	11		
1366	128	600-699	11	26	21	37	33		
791	77	700-799	7	6	3	29	32		
638	79	800-899	8	16	11	23	21		
1353	153	900-999	19	6	2	92	33	1	
510	80	1000-1099	15			46	19		
0		1100-1199							
0		1200----							
moves	611		73	71	50	263	153	1	
YTD totals		5500	805	769	531	1950	1443	2	
YTD Averages		611.1	89.4	85.4	59.0	216.7	160.3	0.2	

2017	SEPTEMBER 2017								
	YTD	Totals	LOA	IntraHbr 1	≤ 30 mi 2	≤50 mi 3	≤75 mi 4	≤100mi 5	101+ mi 6
235	17	Up to 500	2	4	7	4	0		
573	62	500-599	11	16	6	17	12		
1403	164	600-699	17	33	34	36	44		
707	64	700-799	7	7	3	18	29		
653	66	800-899	6	11	13	16	20		
1295	187	900-999	27	9		96	55		
527	41	1000-1099	1			40			
		1100-1199							
		1200----							
moves	601		71	80	63	227	160	0	
YTD totals		5393	749	834	499	1842	1469	0	
YTD Averages		599.2	83.2	92.7	55.4	204.7	163.2	0.0	

2016	SEPTEMBER 2016								
	YTD	Totals	LOA	IntraHbr 1	≤ 30 mi 2	≤50 mi 3	≤75 mi 4	≤100mi 5	101+ mi 6
227	32	Up to 500	7	8	12	5			
618	49	500-599	12	9	5	16	7		
1488	158	600-699	17	23	34	38	46		
749	103	700-799	23	6	3	31	40		
679	74	800-899	10	15	8	20	21		
1150	145	900-999	21	9	6	68	41		
775	89	1000-1099	25	10		36	18		
		1100-1199							
		1200----							
moves	650		115	80	68	214	173	0	
YTD totals		5686	966	797	536	1811	1576	0	
YTD Averages		631.8	107.3	88.6	59.6	201.2	175.1	0.0	

2018	AUGUST 2018								
	YTD	Totals	LOA	IntraHbr 1	≤ 30 mi 2	≤50 mi 3	≤75 mi 4	≤100mi 5	101+ mi 6
291	37	Up to 500	3	13	13	8	0	0	
457	76	500-599	18	10	7	27	14	0	
1238	141	600-699	17	26	25	38	35	0	
714	88	700-799	7	12	2	33	34	0	
559	74	800-899	6	12	14	19	23	0	
1200	152	900-999	23	9	1	82	37	0	
430	86	1000-1099	11	0	0	58	17	0	
		1100-1199							
		1200----							
moves	654		85	82	62	265	160	0	
YTD totals		4889	732	698	481	1687	1290	1	
YTD Averages		698	105	100	69	241	184	0	

2017	AUGUST 2017								
	YTD	Totals	LOA	IntraHbr 1	≤ 30 mi 2	≤50 mi 3	≤75 mi 4	≤100mi 5	101+ mi 6
218	30	Up to 500	3	7	8	10	2		
511	65	500-599	11	10	1	29	14		
1239	163	600-699	11	41	29	34	48		
643	63	700-799	6	5	3	19	30		
587	73	800-899	4	20	10	19	20		
1108	206	900-999	35	6	1	95	69		
486	43	1000-1099				43			
		1100-1199							
		1200----							
moves	643		70	89	52	249	183	0	
YTD totals		4792	678	754	436	1615	1309	0	
YTD Averages		599	85	94	55	202	164	0	

2016	AUGUST 2016								
	YTD	Totals	LOA	IntraHbr 1	≤ 30 mi 2	≤50 mi 3	≤75 mi 4	≤100mi 5	101+ mi 6
195	39	Up to 500	11	8	11	7	2		
569	73	500-599	23	8	3	27	12		
1330	153	600-699	12	29	31	35	46		
646	97	700-799	7	19	3	24	44		
605	65	800-899	7	9	5	25	19		
1005	155	900-999	18	6	3	89	39		
686	99	1000-1099	28	9		40	22		
		1100-1199							
		1200----							
moves	681		106	88	56	247	184	0	
YTD totals		5036	851	717	468	1597	1403	0	
YTD Averages		630	106	90	59	200	175	0	

2018	JULY 2018								
	YTD	Totals	LOA	IntraHbr 1	≤ 30 mi 2	≤50 mi 3	≤75 mi 4	≤100mi 5	101+ mi 6
254	32	Up to 500	4	10	10	8	0	0	
381	57	500-599	16	4	7	23	7	0	
1097	145	600-699	8	36	29	34	38	0	
626	95	700-799	13	3	1	45	33	0	
485	85	800-899	5	23	12	21	24	0	
1048	171	900-999	27	12	2	93	37	0	
344	85	1000--	13	0	0	52	20	0	
		1100-1199							
		1200----							
moves	670		86	88	61	276	159	0	
YTD totals		4235	647	616	419	1422	1130	1	
YTD Averages		605.0	92.4	88.0	59.9	203.1	161.4	0.1	

2017	JULY 2017								
	YTD	Totals	LOA	IntraHbr 1	≤ 30 mi 2	≤50 mi 3	≤75 mi 4	≤100mi 5	101+ mi 6
188	22	Up to 500	0	6	8	8	0	0	
446	86	500-599	14	23	8	29	12	0	
1076	142	600-699	9	31	28	30	44	0	
580	82	700-799	12	8	2	23	37	0	
514	76	800-899	7	23	9	18	19	0	
902	206	900-999	32	7	2	105	60	0	
443	44	1000--	0	0	0	44	0	0	
		1100-1199							
		1200----							
moves	658		74	98	57	257	172	0	
YTD totals		4149	608	665	384	1366	1126	0	
YTD Averages		592.7	86.9	95.0	54.9	195.1	160.9	0.0	

2016	JULY 2016								
	YTD	Totals	LOA	IntraHbr 1	≤ 30 mi 2	≤50 mi 3	≤75 mi 4	≤100mi 5	101+ mi 6
156	28	Up to 500	2	4	11	4	7		
496	102	500-599	8	9	3	21	61		
1177	148	600-699	15	35	28	40	30		
549	90	700-799	14	7	5	44	20		
540	104	800-899	12	12	9	30	41		
850	142	900-999	22	8	2	89	21		
587	75	1000--	25	7		43			
		1100-1199							
		1200----							
moves	689		98	82	58	271	180	0	
YTD totals		4355	745	629	412	1350	1219	0	
YTD Averages		622.1	106.4	88.9	192.9	174.1	0.0		

Puget Sound District
Vessel Moves by LOA and Zone
2016-2018

2018		JUNE 2018							
YTD	Totals	LOA	IntraHbr 1	≤ 30 mi	≤50 mi	≤75 mi	≤100mi	101+ mi	
				2	3	4	5	6	
222	45	Up to 500	10	10	11	10	4		
324	74	500-599	21	8	8	23	14		
952	143	600-699	10	28	27	28	50		
531	94	700-799	12	7	2	38	35		
400	88	800-899	11	15	12	29	21		
877	167	900-999	26	10		91	40		
259	89	1000--	13			57	19		
		1100-1199							
		1200----							
	700		103	78	60	276	183	0	
YTD totals		3565	567	528	358	1146	971	7	
YTD Averages		594.2	93.5	88.0	59.7	191.0	161.8	0.2	

2017		JUNE 2017							
YTD	Totals	LOA	IntraHbr 1	≤ 30 mi	≤50 mi	≤75 mi	≤100mi	101+ mi	
				2	3	4	5	6	
166	45	Up to 500	6	9	8	20	2		
360	61	500-599	12	10	5	23	11		
934	145	600-699	15	29	32	35	34		
498	62	700-799	6	9	5	19	23		
438	72	800-899	12	12	8	16	24		
696	191	900-999	24	14	3	94	56		
399	49	1000--	1			48			
		1100-1199							
		1200----							
	625		76	83	61	255	150	0	
YTD totals		3491	534	567	327	1109	954	0	
YTD Averages		581.8	89.0	94.5	54.5	184.8	159.0	0.0	

2016		JUNE 2016							
YTD	Totals	LOA	IntraHbr 1	≤ 30 mi	≤50 mi	≤75 mi	≤100mi	101+ mi	
				2	3	4	5	6	
128	39	Up to 500	7	7	11	13	1		
394	67	500-599	20	11	4	25	7		
1029	194	600-699	25	43	37	39	50		
459	87	700-799	11	4	3	31	38		
436	77	800-899	9	12	8	26	22		
708	152	900-999	24	7	2	78	41		
512	94	1000--	25	9		42	18		
		1100-1199							
		1200----							
	710		121	93	65	254	177	0	
YTD totals		3666	647	547	354	1079	1039	0	
YTD Averages		611.0	107.8	91.2	59.0	179.8	173.2	0.0	

2018		MAY 2018							
YTD	Totals	LOA	IntraHbr 1	≤ 30 mi	≤50 mi	≤75 mi	≤100mi	101+ mi	
				2	3	4	5	6	
177	42	Up to 500	3	12	6	15	6		
250	61	500-599	16	13	2	25	4	1	
809	149	600-699	20	30	31	28	40		
437	104	700-799	16	11	2	35	40		
312	77	800-899	13	12	6	21	25		
710	161	900-999	35	2	1	73	50		
170	62	1000--	7			42	13		
		1100-1199							
		1200----							
	656		110	80	48	239	178	1	
YTD totals		2865	458	450	298	870	788	1	
YTD Averages		573.0	91.6	90.0	59.6	174.0	157.6	0.2	

2017		MAY 2017							
YTD	Totals	LOA	IntraHbr 1	≤ 30 mi	≤50 mi	≤75 mi	≤100mi	101+ mi	
				2	3	4	5	6	
121	32	Up to 500	3	7	9	10	3		
299	68	500-599	8	18	4	25	13		
789	169	600-699	16	43	36	38	36		
436	92	700-799	15	7	4	29	37		
366	79	800-899	12	16	8	21	22		
505	177	900-999	20	12		93	52		
350	37	1000--	1	1		35			
		1100-1199							
		1200----							
	654		75	104	61	251	163	0	
YTD totals		2866	458	484	266	854	804	0	
YTD Averages		573.2	91.6	96.8	53.2	170.8	160.8	0.0	

2016		MAY 2016							
YTD	Totals	LOA	IntraHbr 1	≤ 30 mi	≤50 mi	≤75 mi	≤100mi	101+ mi	
				2	3	4	5	6	
89	26	Up to 500	3	5	6	11	1	0	
327	74	500-599	20	15	4	26	9	0	
835	175	600-699	18	41	37	34	45	0	
372	69	700-799	7	9	5	18	30	0	
359	83	800-899	9	12	8	28	26	0	
556	142	900-999	18	6	3	68	47	0	
418	96	1000--	30	9	0	39	18	0	
		1100-1199							
		1200----							
	665		105	97	63	224	176	0	
YTD totals		2956	526	454	289	825	862	0	
YTD Averages		591.2	105.2	90.8	57.8	165.0	172.4	0.0	

2018		APRIL 2018							
YTD	Totals	LOA	IntraHbr 1	≤ 30 mi	≤50 mi	≤75 mi	≤100mi	101+ mi	
				2	3	4	5	6	
135	26	Up to 500	5	8	9	3	1		
189	46	500-599	9	6	3	22	6		
660	156	600-699	18	41	28	33	36		
333	88	700-799	15	14	3	23	33		
235	64	800-899	7	13	5	19	20		
549	115	900-999	22	5	4	33	51		
108	30	1000--	1			27	2		
		1100-1199							
		1200----							
	525		77	87	52	160	149	0	
YTD totals		2209	348	370	250	631	610	0	
YTD Averages		552.3	87.0	92.5	62.5	157.8	152.5	0.0	

2017		APRIL 2017							
YTD	Totals	LOA	IntraHbr 1	≤ 30 mi	≤50 mi	≤75 mi	≤100mi	101+ mi	
				2	3	4	5	6	
89	28	Up to 500	1	6	10	11	0		
231	52	500-599	17	6	1	18	10		
620	160	600-699	18	33	29	38	42		
344	82	700-799	10	10	3	26	33		
287	68	800-899	10	8	6	22	22		
328	91	900-999	19	5		28	39		
313	69	1000--	22	7		23	17		
		1100-1199							
		1200----							
	550		97	75	49	166	163	0	
YTD totals		2212	383	380	205	603	641	0	
YTD Averages		553.0	95.8	95.0	51.3	150.8	160.3	0.0	

2016		APRIL 2016							
YTD	Totals	LOA	IntraHbr 1	≤ 30 mi	≤50 mi	≤75 mi	≤100mi	101+ mi	
				2	3	4	5	6	
63	28	Up to 500	11	3	8	6	0	0	
253	55	500-599	19	6	3	17	10	0	
660	168	600-699	17	35	44	34	38	0	
303	69	700-799	6	12	1	18	32	0	
276	72	800-899	11	7	8	22	24	0	
414	104	900-999	17	8	0	33	46	0	
322	77	1000--	26	8	0	25	18	0	
		1100-1199							
		1200----							
	573		107	79	64	155	168	0	
YTD totals		2291	421	357	226	601	686	0	
YTD Averages		572.8	105.3	89.3	56.5	150.3	171.5	0.0	

Puget Sound District
Vessel Moves by LOA and Zone
2016-2018

2018 YTD	MARCH 2018							
	Totals	LOA	IntraHbr 1	≤ 30 mi 2	≤50 mi 3	≤75 mi 4	≤100mi 5	101+ mi 6
109	36	Up to 500	3	10	13	7	3	0
143	42	500-599	7	7	4	17	7	0
504	167	600-699	15	38	32	40	42	0
245	91	700-799	12	12	3	22	42	0
171	57	800-899	5	7	9	13	23	0
434	148	900-999	32	15	3	45	53	0
78	22	1000--	0	1	0	21	0	0
		1100-1199						
		1200----						
moves	563		74	90	64	165	170	0
YTD totals		1684	271	283	198	471	461	0
YTD Averages		561.3	90.3	94.3	66.0	157.0	153.7	0.0

2017 YTD	MARCH 2017							
	Totals	LOA	IntraHbr 1	≤ 30 mi 2	≤50 mi 3	≤75 mi 4	≤100mi 5	101+ mi 6
61	27	Up to 500	0	8	10	9	0	0
179	54	500-599	12	8	4	18	12	0
460	150	600-699	19	33	28	28	42	0
262	88	700-799	10	20	3	21	34	0
219	61	800-899	11	7	5	17	21	0
237	83	900-999	16	5	1	25	36	0
244	85	1000--	27	9		25	24	0
		1100-1199						
		1200----						
moves	548		95	90	51	143	169	0
2017 YTD totals		1662	286	305	156	437	478	0
YTD Averages		554.0	95.3	101.7	52.0	145.7	159.3	0.0

2016 YTD	MARCH 2016							
	Totals	LOA	IntraHbr 1	≤ 30 mi 2	≤50 mi 3	≤75 mi 4	≤100mi 5	101+ mi 6
35	15	Up to 500	1	4	8	2	0	0
198	65	500-599	15	11	2	28	9	0
492	176	600-699	20	38	35	35	48	0
234	71	700-799	7	13	1	14	36	0
204	78	800-899	9	11	10	18	30	0
310	106	900-999	21	6	2	29	48	0
245	80	1000--	29	9	0	24	18	0
		1100-1199						
		1200----						
moves	591		102	92	58	150	189	0
2016 YTD totals		1718	314	278	162	446	518	0
YTD Averages		572.7	104.7	92.7	54.0	148.7	172.7	0.0

2018 YTD	FEBRUARY 2018							
	Totals	LOA	IntraHbr 1	≤ 30 mi 2	≤50 mi 3	≤75 mi 4	≤100mi 5	101+ mi 6
73	40	Up to 500	14	7	13	6	0	0
101	46	500-599	5	11	2	21	7	0
337	159	600-699	18	45	37	29	30	0
154	73	700-799	13	6	0	21	33	0
114	58	800-899	7	11	12	15	13	0
286	141	900-999	31	14	5	40	51	0
56	25	1000--	1	0	0	24	0	0
		1100-1199						
		1200----						
moves	542		89	94	69	156	134	0
YTD totals		1121	197	193	134	306	291	0
YTD Averages		560.5	98.5	96.5	67.0	153.0	145.5	0.0

2017 YTD	FEBRUARY 2017							
	Totals	LOA	IntraHbr 1	≤ 30 mi 2	≤50 mi 3	≤75 mi 4	≤100mi 5	101+ mi 6
34	22	Up to 500	0	6	5	8	3	0
125	69	500-599	3	11	4	13	38	0
310	140	600-699	12	42	25	30	31	0
174	79	700-799	9	22	5	25	18	0
158	80	800-899	12	5	12	17	34	0
154	65	900-999	15	7	0	24	19	0
159	65	1000--	29	8	1	27	0	0
		1100-1199						
		1200----						
moves	520		80	101	52	144	143	0
YTD totals		1114	191	215	105	294	309	0
YTD Averages		557.0	95.5	107.5	52.5	147.0	154.5	0.0

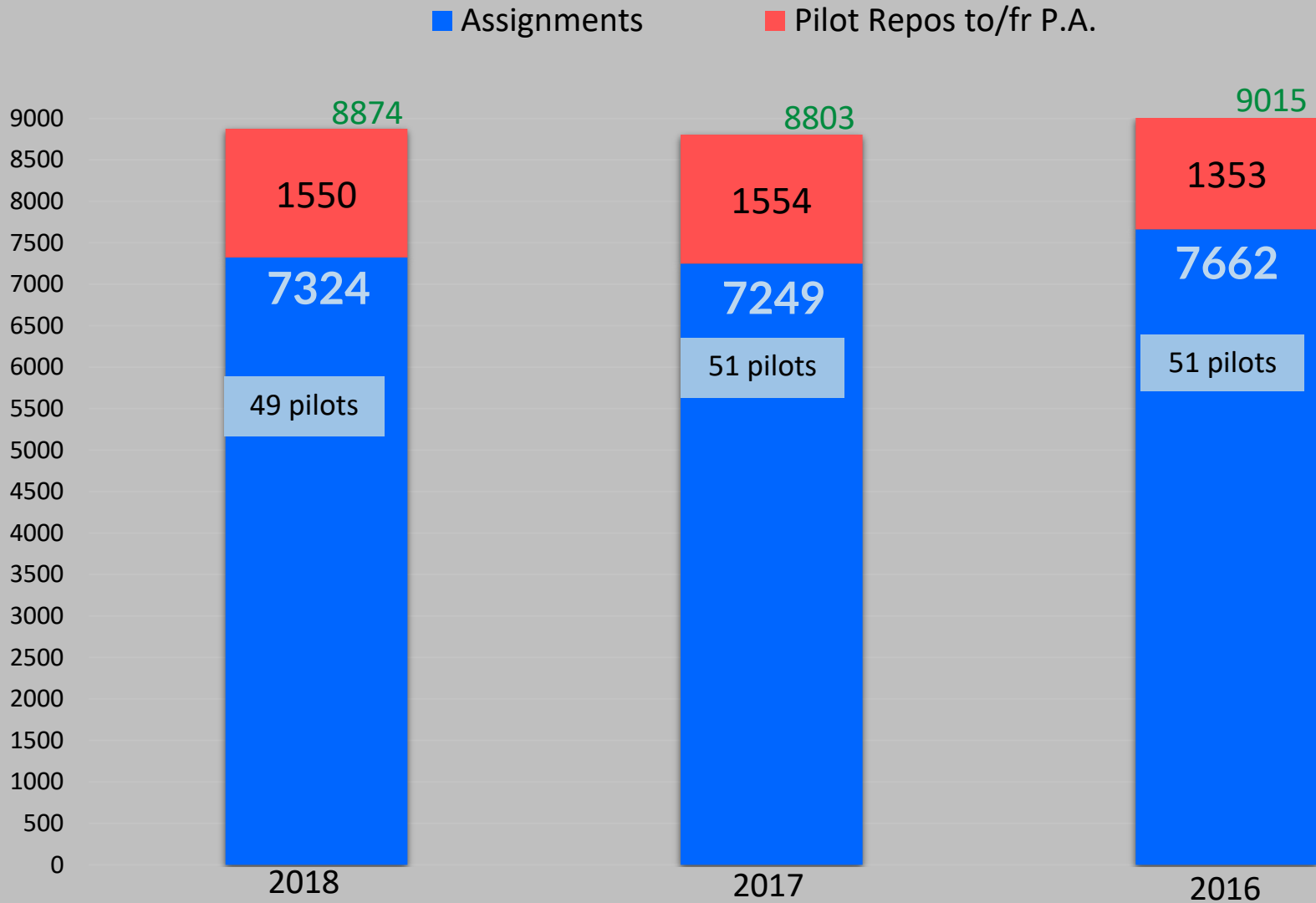
2016 YTD	FEBRUARY 2016							
	Totals	LOA	IntraHbr 1	≤ 30 mi 2	≤50 mi 3	≤75 mi 4	≤100mi 5	101+ mi 6
20	6	Up to 500	2	0	4	0	0	0
133	65	500-599	18	20	3	15	9	0
316	153	600-699	14	39	28	30	42	0
163	75	700-799	5	17	2	20	31	0
126	62	800-899	7	13	5	15	22	0
204	101	900-999	21	3	1	31	45	0
165	76	1000--	24	10	0	28	14	0
		1100-1199						
		1200----						
moves	538		91	102	43	139	163	0
YTD totals		1127	212	186	104	296	329	0
YTD Averages		563.5	106.0	93.0	52.0	148.0	164.5	0.0

2018 YTD	JANUARY 2018							
	Totals	LOA	IntraHbr 1	≤ 30 mi 2	≤50 mi 3	≤75 mi 4	≤100mi 5	101+ mi 6
	33	Up to 500	13	5	11	3	1	0
	55	500-599	11	16	3	16	9	0
	178	600-699	29	34	37	37	41	0
	81	700-799	14	14	1	18	34	0
	56	800-899	8	16	6	13	13	0
	145	900-999	31	14	7	36	57	0
	31	1000--	2	0	0	27	2	0
		1100-1199						
		1200----						
moves	579		108	99	65	150	157	0

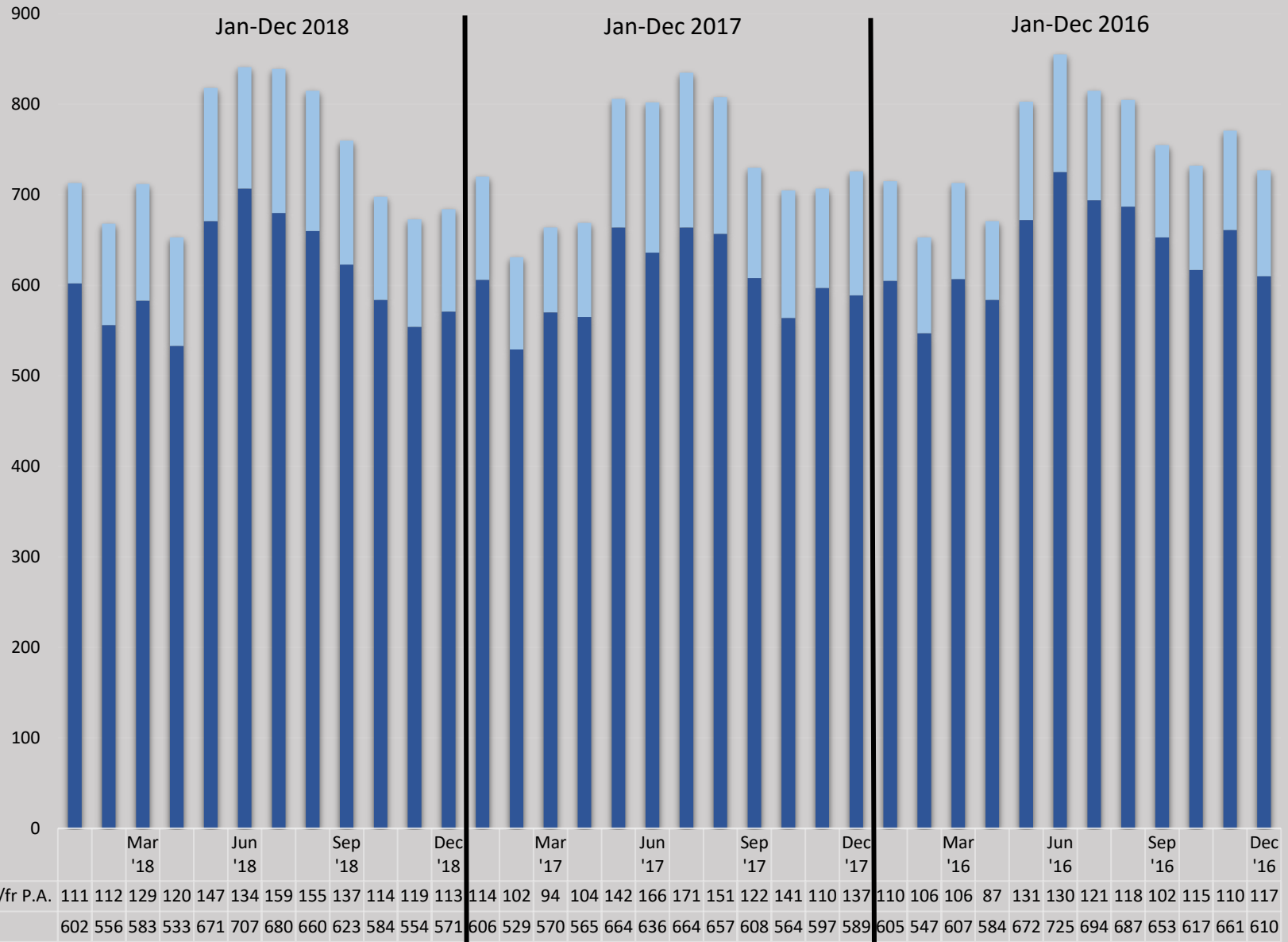
2017 YTD	JANUARY 2017							
	Totals	LOA	IntraHbr 1	≤ 30 mi 2	≤50 mi 3	≤75 mi 4	≤100mi 5	101+ mi 6
	12	Up to 500	1	4	7			
	56	500-599	25	7	2	16	6	
	170	600-699	13	51	32	34	40	
	95	700-799	13	19	3	22	38	
	78	800-899	13	13	9	23	20	
	89	900-999	15	8		28	38	
	94	1000--	31	12		27	24	
		1100-1199						
		1200----						
moves	594		111	114	53	150	166	0

2016 YTD	JANUARY 2016							
	Totals	LOA	IntraHbr 1	≤ 30 mi 2	≤50 mi 3	≤75 mi 4	≤100mi 5	101+ mi 6
	14	Up to 500	4	3	1	6		
	68	500-599	14	12	11	23	8	
	163	600-699	20	35	34	31	43	
	88	700-799	17	9	4	26	32	
	64	800-899	17	7	9	13	18	
	103	900-999	20	7	2	28	46	
	89	1000--	29	11		30	19	
		1100-1199						
		1200----						
moves	589		121	84	61	157	166	0

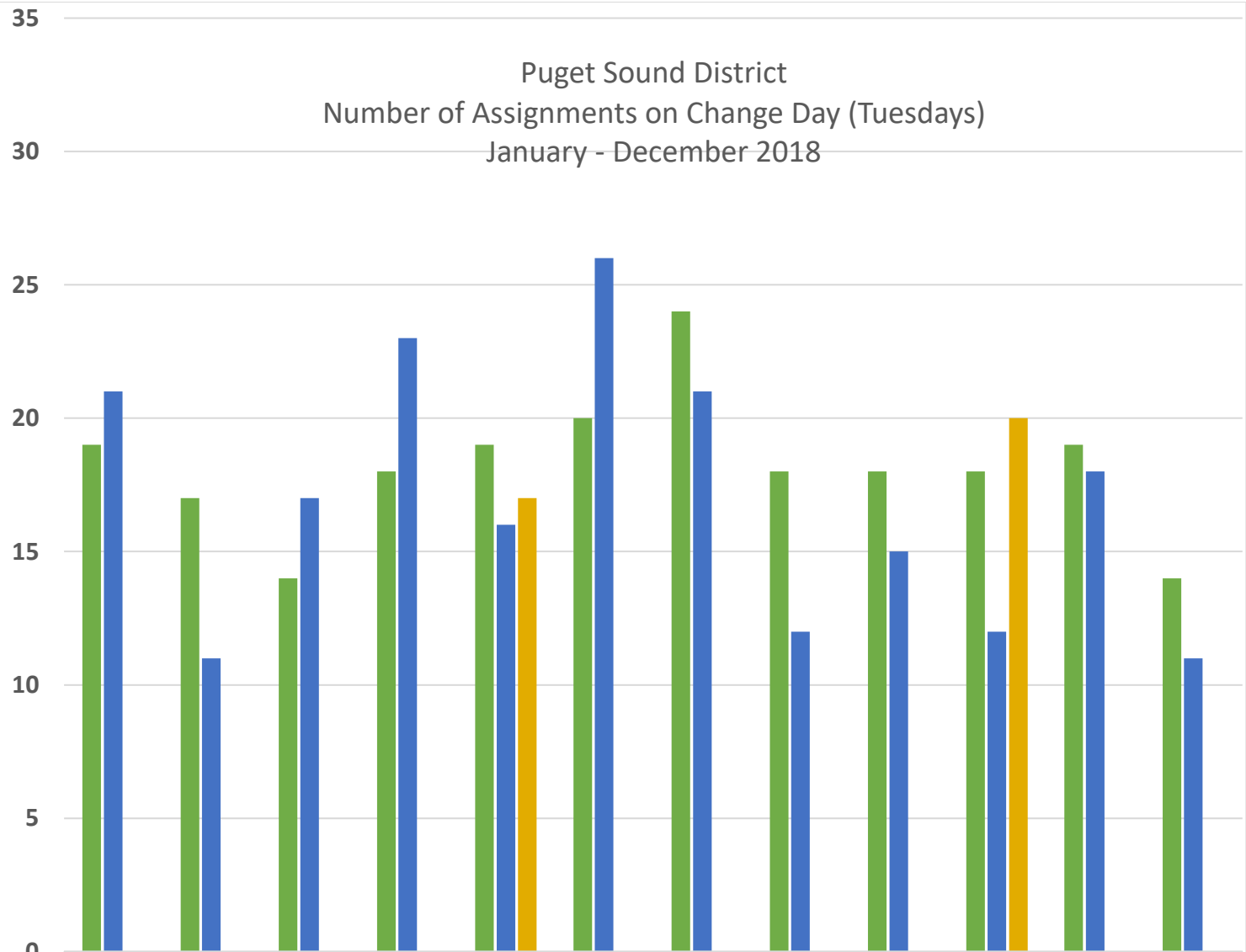
Puget Sound District
Total Repositions to/from PA and
Total Assignments 2016-2018



Puget Sound District
Pilot Repositions and Assignments
2018-2016



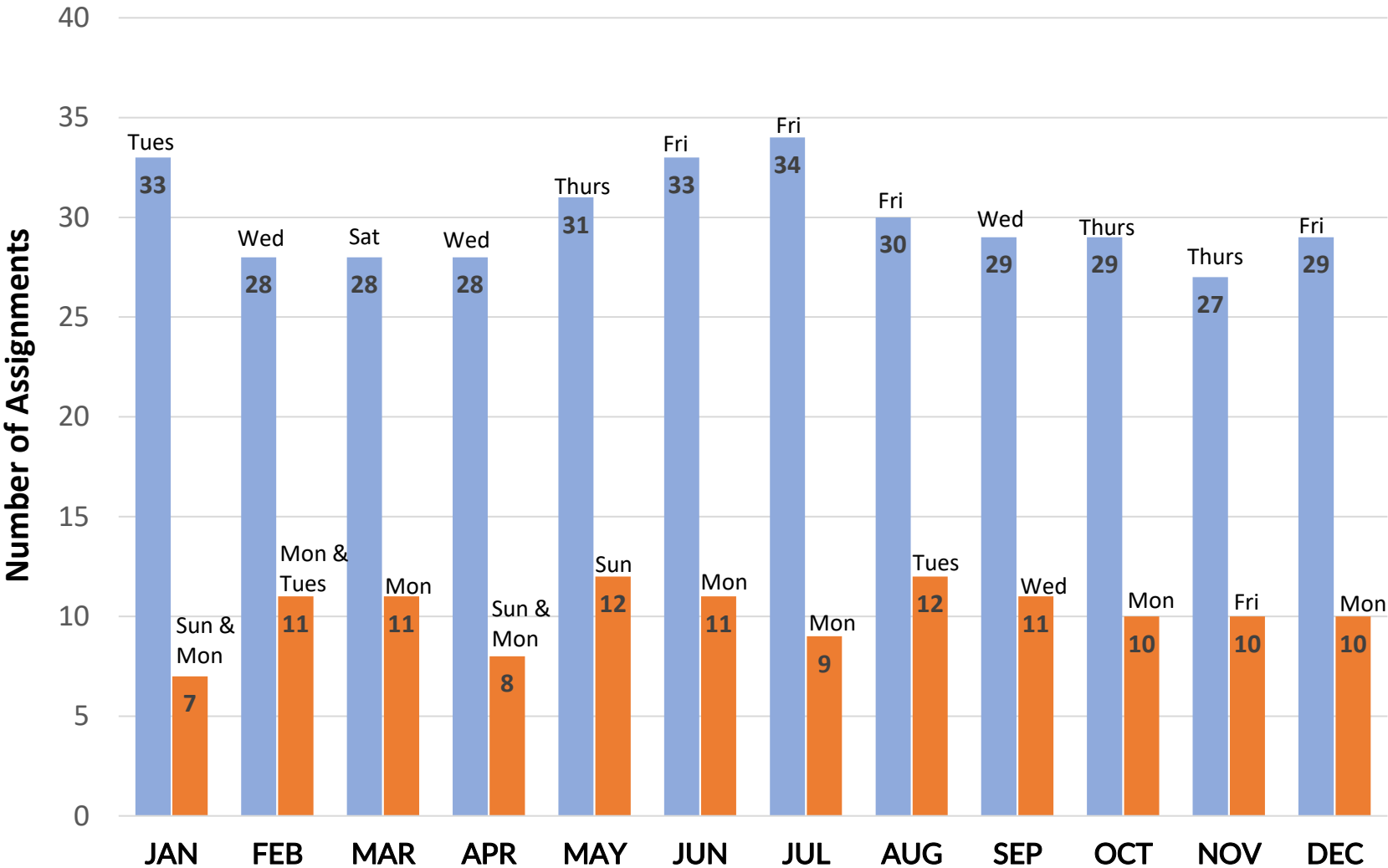
Puget Sound District
 Number of Assignments on Change Day (Tuesdays)
 January - December 2018



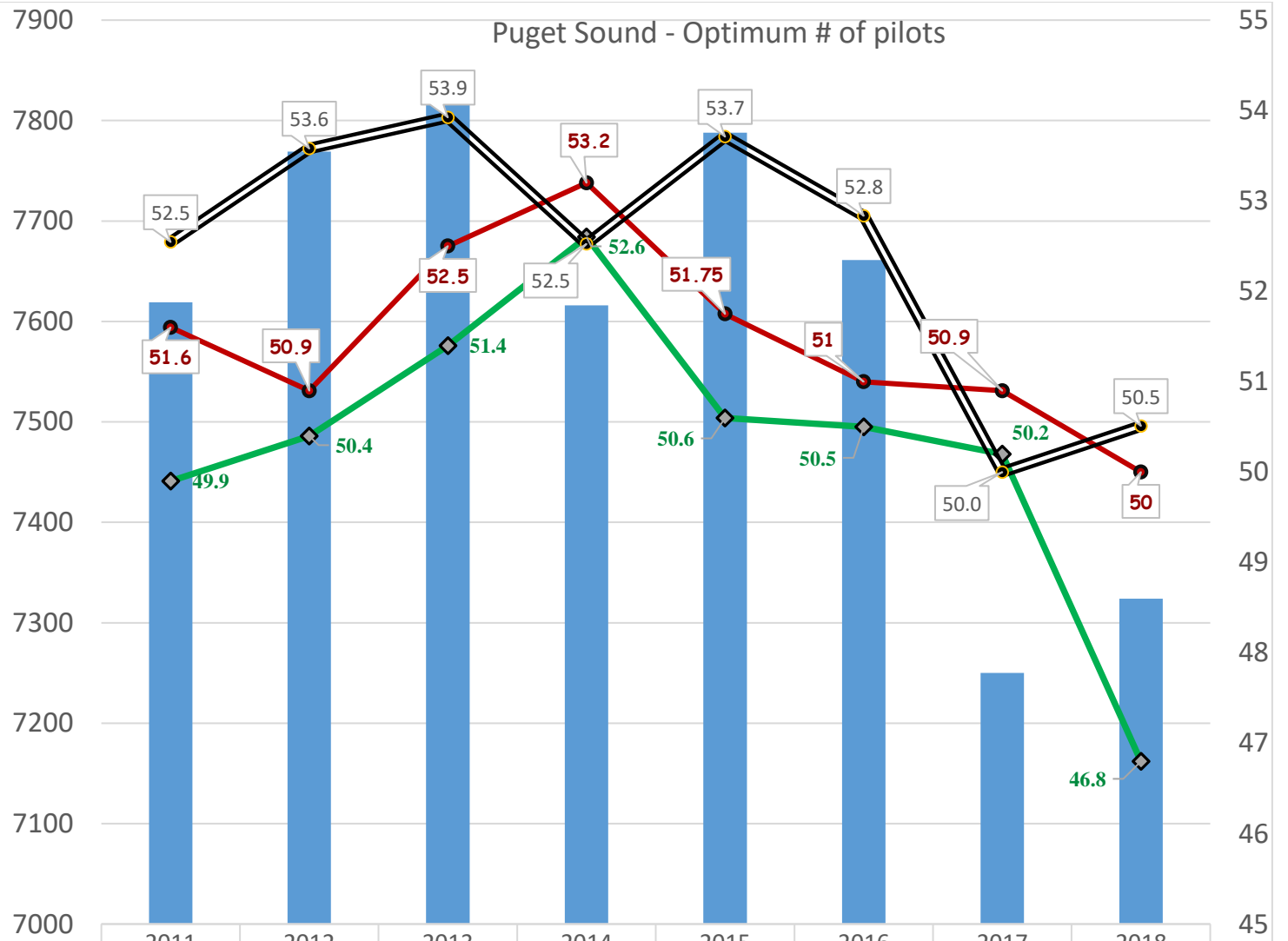
	JAN	FEB	MAR	APR	MAY	JUN	JUL	AUG	SEP	OCT	NOV	DEC
■ 1st Change Day of Month	19	17	14	18	19	20	24	18	18	18	19	14
■ 2nd Change Day of Month	21	11	17	23	16	26	21	12	15	12	18	11
■ 3rd Change Day of Month					17					20		

Hi-Low Number of Assignments in Month and Day of Week

January - December 2018



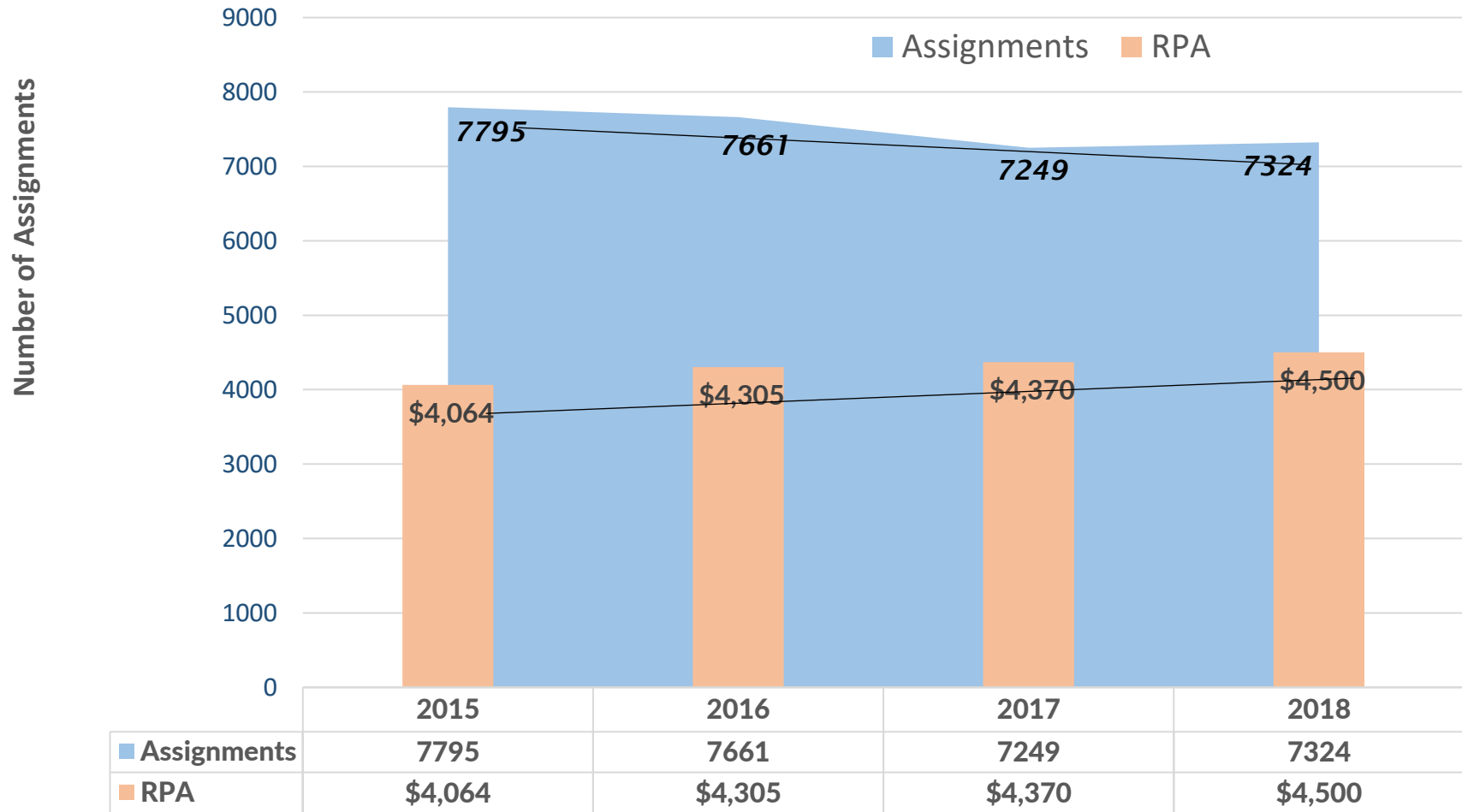
Puget Sound - Optimum # of pilots



■ # of Assignments
● Licensed Pilots (w/o President)
◆ Pilots Available to Dispatch
● Target # of *Working Pilots @ 145 assigns per pilot/year

2011	2012	2013	2014	2015	2016	2017	2018
7619	7769	7819	7616	7788	7661	7250	7324
51.6	50.9	52.5	53.2	51.75	51	50.9	50
49.9	50.4	51.4	52.6	50.6	50.5	50.2	46.8
52.5	53.6	53.9	52.5	53.7	52.8	50.0	50.5

Puget Sound Pilots
Revenue Per Assignment and Number of Assignments
Through December 2015 - 2018



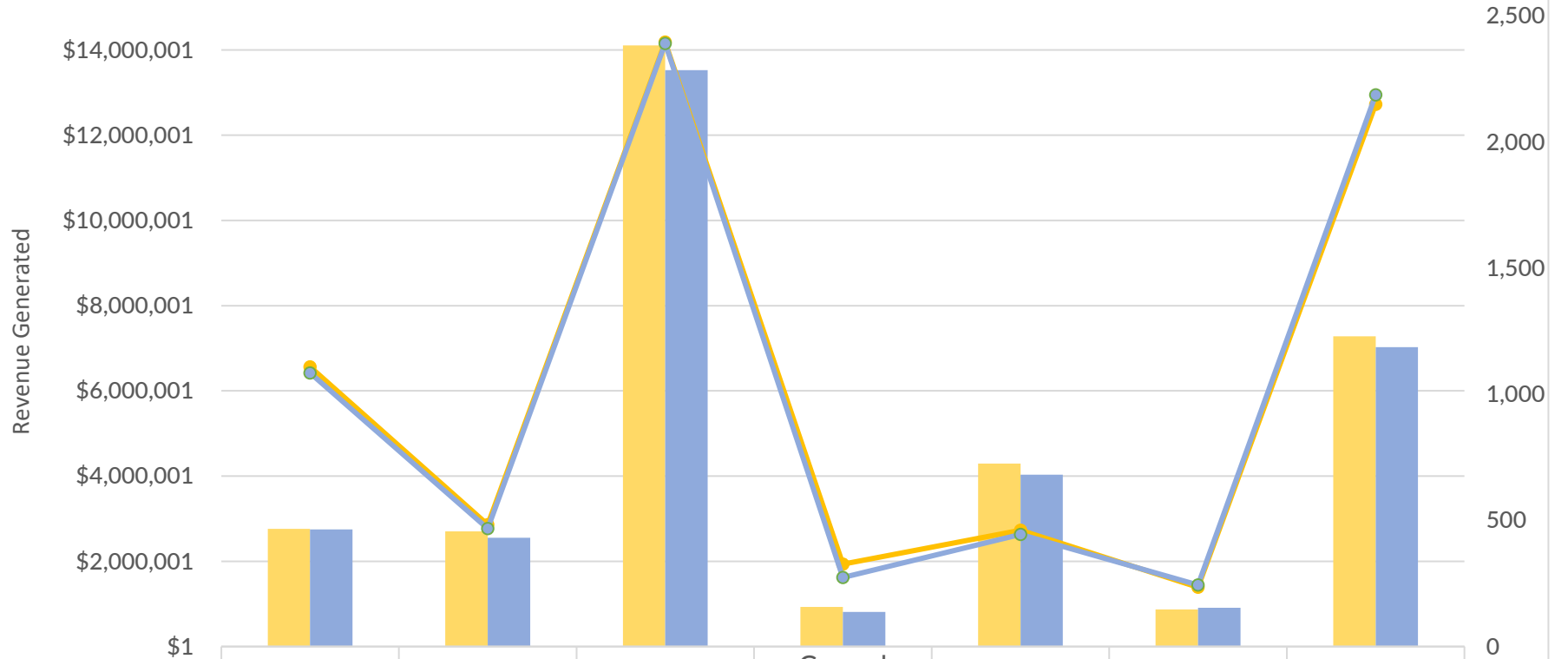
Just the Basics
2018-2015

MONTH

Year to Date

2018	Month	Revenue minus Transp	Assignments	RPA for month	YTD Revenue	YTD Assgn	YTD RPA
	Jan	-4.7%	2,371,508	602 -0.7%	3,939 -4.1%		-0.7%
	Feb	4.4%	2,279,245	556 5.1%	4,099 -0.7%	\$ 4,650,753 -0.4%	4,016 -2.4%
	Mar	3.7%	2,357,526	583 2.3%	4,044 1.3%	7,008,279 0.9%	4,025 -1.2%
	Apr	-5.1%	2,197,452	533 -5.7%	4,123 0.6%	9,205,731 -0.6%	4,048 -0.8%
	May	1.1%	3,001,506	671 1.1%	4,473 0.0%	12,207,237 -0.2%	4,145 -0.6%
	Jun	14.3%	3,496,544	707 11.2%	4,946 2.8%	15,703,781 2.7%	4,300 0.4%
	Jul	5.7%	3,419,901	680 2.4%	5,029 3.2%	19,123,682 3.2%	4,415 0.9%
	Aug	4.8%	3,237,698	660 0.5%	4,906 4.3%	22,361,381 3.5%	4,479 1.4%
	Sep	7.6%	3,172,712	623 2.5%	5,093 5.0%	25,534,093 4.0%	4,547 1.8%
	Oct	8.7%	2,563,816	584 3.5%	4,390 5.0%	28,097,909 4.4%	4,532 2.1%
	Nov	1.4%	2,402,816	554 -7.2%	4,337 9.2%	30,500,725 4.1%	4,516 2.7%
	Dec	3.2%	2,459,913	571 -3.1%	4,308 6.4%	32,960,638 4.1%	4,500 3.0%
	2018		32,960,638	7324			75
2017	Month	Revenue minus Transp	Assignments	RPA for month	YTD Revenue	YTD Assgn	YTD RPA
	Jan	1.8%	2,488,326	606 0.2%	4,106 1.7%		
	Feb	-3.8%	2,183,032	529 -3.3%	4,127 -0.5%	\$ 4,671,358 -0.9%	4,116 0.6%
	Mar	-6.0%	2,274,287	570 -6.1%	3,990 0.1%	6,945,645 -2.6%	4,074 0.5%
	Apr	-1.5%	2,315,825	565 -3.3%	4,099 1.9%	9,261,470 -2.3%	4,080 0.8%
	May	-2.3%	2,968,949	664 -1.2%	4,471 -1.1%	12,230,419 -2.3%	4,169 0.4%
	Jun	-4.8%	3,060,089	636 -12.3%	4,811 8.5%	15,290,508 -2.8%	4,283 1.8%
	Jul	-2.6%	3,235,074	664 -4.3%	4,872 1.8%	18,525,582 -2.8%	4,375 1.8%
	Aug	-5.3%	3,089,703	657 -4.2%	4,703 -1.1%	21,615,285 -3.2%	4,419 1.4%
	Sep	-2.4%	2,948,218	608 -6.9%	4,849 4.9%	24,563,503 -3.1%	4,466 1.7%
	Oct	-8.3%	2,357,919	564 -8.6%	4,181 0.3%	26,921,423 -3.5%	4,440 1.6%
	Nov	-9.6%	2,370,766	597 -9.7%	3,971 0.1%	29,292,188 -4.1%	4,398 1.5%
	Dec	-2.5%	2,383,967	589 -3.4%	4,047 0.9%	\$ 31,676,155 -4.0%	4,370 1.5%
	2017	-4.0%	31,676,155	7249 -5.4%			(412)
2016	Month	Revenue minus Transp	Assignments	RPA for month	YTD Revenue	YTD Assgn	YTD RPA
	Jan	11.0%	2,443,846	605 4.9%	4,039 5.8%		
	Feb	12.1%	2,269,624	547 5.8%	4,149 5.9%	\$ 4,713,470 11.5%	4,092 5.9%
	Mar	2.3%	2,419,890	607 -5.0%	3,987 7.7%	7,133,360 8.2%	4,055 6.6%
	Apr	9.2%	2,350,195	584 -5.8%	4,024 15.9%	9,483,555 8.4%	4,048 8.9%
	May	2.7%	3,039,515	672 -13.2%	4,523 18.3%	12,523,070 7.0%	4,154 11.0%
	Jun	0.1%	3,215,179	725 -8.3%	4,435 9.2%	15,738,249 5.5%	4,208 10.5%
	Jul	12.2%	3,320,803	694 9.8%	4,785 2.2%	19,059,052 6.6%	4,298 9.4%
	Aug	-0.9%	3,261,886	686 -1.0%	4,755 0.1%	22,320,938 5.4%	4,360 8.0%
	Sep	9.5%	3,019,483	653 8.7%	4,624 0.8%	25,340,421 5.9%	4,389 7.2%
	Oct	-3.3%	2,571,409	617 -7.4%	4,168 4.4%	27,911,830 5.0%	4,368 7.0%
	Nov	5.8%	2,622,922	661 2.6%	3,968 3.1%	30,534,752 5.1%	4,331 6.6%
	Dec	-6.6%	2,446,187	610 -4.8%	4,010 -1.8%	\$ 32,980,939 4.1%	4,305 5.9%
	2016	4.1%	32,980,939	7,661 -1.7%			(134)
2015	Month	Revenue minus Transp	Assignments	RPA for month	YTD Revenue	YTD Assgn	YTD RPA
	Jan	-13.8%	2,202,588	577 -9.7%	3,817 -4.5%		
	Feb	-10.5%	2,024,842	517 -11.3%	3,917 1.0%	\$ 4,227,430 -12.2%	3,864 -2.0%
	Mar	-1.6%	2,365,096	639 2.6%	3,701 -4.1%	6,592,526 -8.7%	3,804 -2.8%
	Apr	-12.6%	2,153,086	620 -1.6%	3,473 -11.2%	8,745,612 -9.7%	3,717 -5.0%
	May	-2.5%	2,959,296	774 15.4%	3,823 -15.5%	11,704,908 -8.0%	3,743 -7.4%
	Jun	5.8%	3,210,995	791 14.6%	4,059 -7.7%	14,915,903 -5.3%	3,807 -7.3%
	Jul	-2.1%	2,960,243	632 -4.7%	4,684 2.7%	17,876,146 -4.8%	3,929 -5.9%
	Aug	2.2%	3,291,439	693 1.2%	4,750 1.1%	21,167,585 -3.8%	4,037 -4.9%
	Sep	3.8%	2,756,533	601 0.7%	4,587 3.1%	23,924,118 -3.0%	4,094 -4.0%
	Oct	9.4%	2,659,033	666 4.2%	3,993 5.0%	26,583,151 -1.8%	4,083 -3.2%
	Nov	13.9%	2,479,703	644 8.8%	3,850 4.7%	29,062,854 -0.7%	4,062 -2.7%
	Dec	20.2%	2,618,146	641 6.1%	4,084 13.3%	31,681,000 0.8%	4,064 -1.5%
	2015	0.8%	31,681,000	7,795 2.4%			179

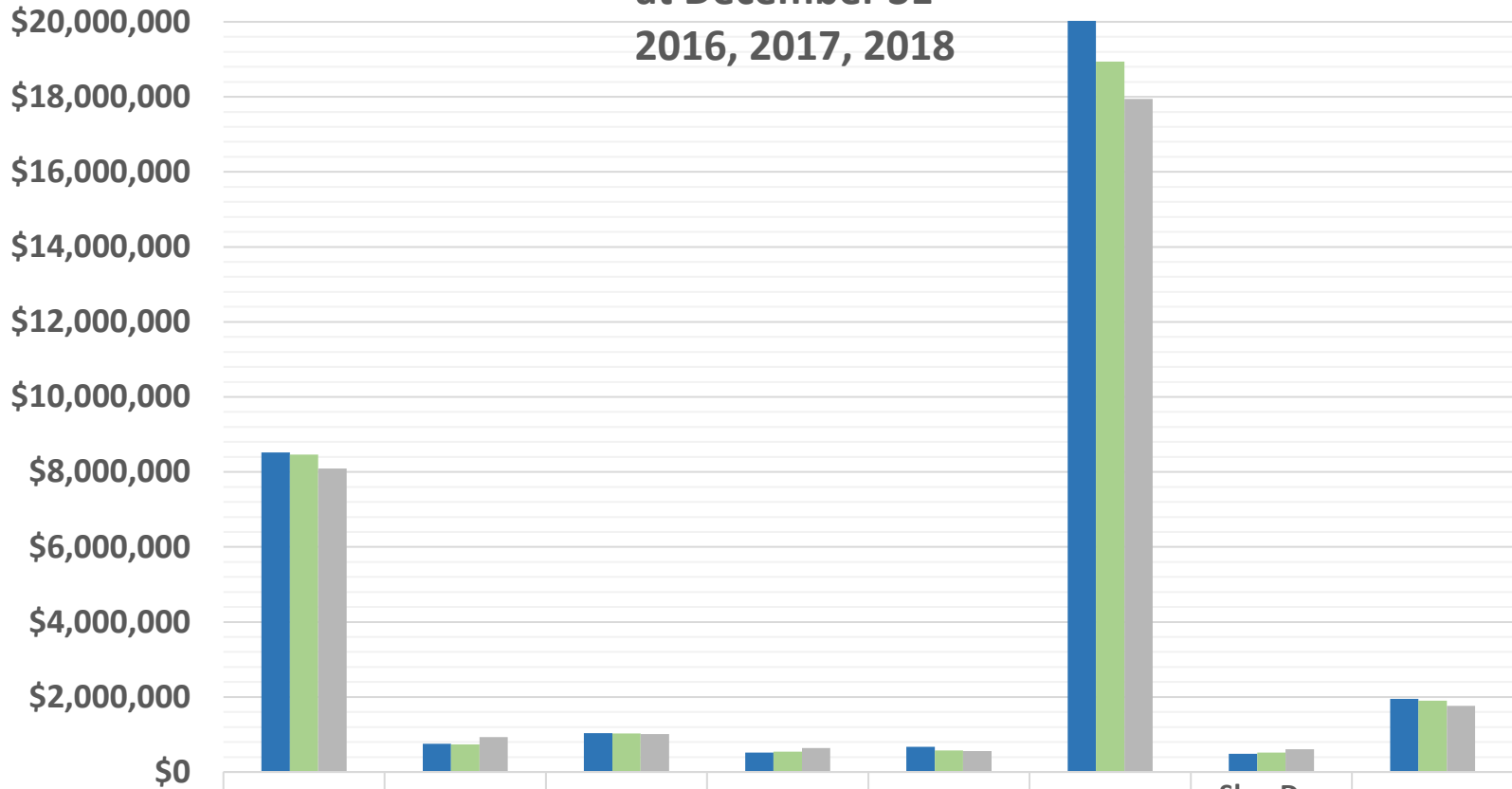
Puget Sound District Revenue Generated by Vessel Type 2017 - 2018



	Bulker	Car Carrier	Container	General Purpose	Passenger	Ro-Ro	Tanker
2018 Revenue	\$2,764,056	\$2,703,538	\$14,106,403	\$932,190	\$4,291,983	\$872,636	\$7,279,277
2017 Revenue	\$2,747,059	\$2,551,798	\$13,528,013	\$813,206	\$4,035,091	\$909,220	\$7,023,550
2018 Moves	1,109	483	2,396	327	461	235	2,149
2017 Moves	1,084	468	2,391	274	444	244	2,187

2018 Revenue
 2017 Revenue
 2018 Moves
 2017 Moves

**PSP Source of Revenue by Tariff Category
at December 31
2016, 2017, 2018**



	LOA/Zone	Harbor Shift	Transp	Waterwy	BC/Bridge / Cancels	Tonnage Surcharge	SlowDn; Stndby; Sail, Arrvl or Dock Delay	Pilot Boat
Dec YTD 2018	8,520,794	753,257	1,036,161	517,161	667,845	20,067,888	485,785	1,948,104
Dec YTD 2017	8,462,141	738,296	1,029,519	545,414	571,724	18,939,599	519,586	1,899,036
Dec YTD 2016	8,091,485	931,227	1,009,204	637,925	561,242	17,941,176	609,076	1,762,620

PSP Source of Revenue
January-December
2018, 2017, 2016

SUMMARY OF PSP Earned Revenue Rpt <u>Calendar Year</u>	2018	2018	2018	2018	2018		2017	2017	2017	2017	2017		2016	2016	2016	2016	2016
	1st Qtr	2nd Qtr	3rd Qtr	4th Qtr	YTD	YTD	1st Qtr	2nd Qtr	3rd Qtr	4th Qtr	YTD	YTD	1st Qtr	2nd Qtr	3rd Qtr	4th Qtr	YTD
--Counters & Misc Totals--						YTD Change						YTD Change					
Seattle Assigns	382	621	714	461	2,178	4.2%	417	611	657	405	2,090	1.1%	415	607	720	326	2,068
Ship Assigns	1,741	1,911	1,963	1,709	7,324	1.0%	1,705	1,866	1,929	1,750	7,250	2.8%	1,759	1,981	2,033	1,278	7,051
Pilot Boat Assigns	1,241	1,451	1,587	1,319	5,598	2.6%	1,218	1,393	1,514	1,333	5,458	7.8%	1,254	1,440	1,453	917	5,064
Tonnage Surcharge/Moves	1,661	1,881	1,935	1,662	7,139	0.4%	1,662	1,829	1,897	1,700	7,088	2.2%	1,718	1,948	2,020	1,249	6,935
+non tonnage moves	23				23					0							
Surcharge Revenue	\$4,021,037	\$5,334,262	\$6,277,601	\$4,434,988	\$20,067,888	6.0%	\$3,975,144	\$5,045,826	\$5,812,519	\$4,106,110	\$18,939,599	5.6%	\$3,970,859	\$5,078,192	\$5,923,841	\$2,968,284	\$17,941,176
--Source of Revenue Breakdown--																	
LOA/Zone (*)	\$1,900,570	\$2,242,724	\$2,405,191	\$1,972,309	\$8,520,794	0.7%	\$1,906,628	\$2,187,021	\$2,375,000	\$1,993,492	\$8,462,141	4.6%	\$1,971,175	\$2,272,257	\$2,430,109	\$1,417,944	\$8,091,485
Harbor Shift (*)	176,530	204,143	185,026	187,558	753,257	2.0%	241,232	179,973	151,891	165,200	738,296	-20.7%	255,129	255,161	252,965	167,972	931,227
Transportation (**)	289,148	257,330	248,000	241,683	1,036,161	0.6%	242,747	265,285	258,331	263,157	1,029,519	2.0%	258,844	279,996	280,626	189,737	1,009,204
BC Surcharge (***)	132,741	88,494	90,601	65,317	377,153	4.7%	77,959	107,457	99,029	75,852	360,297	-2.3%	73,745	117,992	117,992	58,996	368,725
Bridge Transit (***)	13,844	23,388	24,114	17,243	78,589	-2.2%	19,771	23,252	18,858	18,459	80,340	-8.5%	24,180	27,428	24,876	11,334	87,818
Waterway (***)	116,660	142,652	137,180	120,669	517,161	-5.2%	158,042	130,986	133,057	123,329	545,414	-14.5%	185,991	178,429	168,112	105,393	637,925
Tonnage Surcharge (***)	4,021,037	5,334,262	6,277,601	4,434,988	20,067,888	6.0%	3,975,144	5,045,826	5,812,519	4,106,110	18,939,599	5.6%	3,970,859	5,078,192	5,923,841	2,968,284	17,941,176
Cancellations (***)	36,165	17,503	19,965	32,531	106,164	7.4%	27,352	21,649	18,168	31,655	98,824	36.3%	24,548	19,570	9,068	19,323	72,509
Compass Adj (***)	718	2,513	2,154	1,436	6,821	58.3%	718	359	1,795	1,436	4,308	-20.0%	1,077	2,513	359	1,436	5,385
Standby/Sail Delay (***)	57,612	68,298	61,978	90,820	278,708	-6.8%	69,412	77,466	60,972	91,148	298,998	0.1%	88,610	71,604	55,721	82,802	298,737
Slow Down (***)	12,640	44,716	63,330	10,960	131,646	4.9%	14,522	39,456	57,266	14,266	125,510	-35.5%	54,252	43,611	86,620	10,156	194,639
Salmon Bay (***)	2,532	2,321	211	633	5,697	35.0%	211	1,266	1,688	1,055	4,220	-25.9%	210	1,266	3,376	844	5,696
Lk Union/Washington (***)	328	1,312		328	1,968	-36.8%	164	984	1,148	820	3,116	24.3%	164	1,078	1,640	-375	2,507
Sea Trials (***)	86,866	1,014		0	87,880	845.5%	3,718	0	5,577	0	9,295	-42.7%	3,718	7,267	4,225	1,014	16,224
Delayed Arr & Dock Delay (***)	15,115	16,476	10,960	32,880	75,431	-20.7%	26,852	36,716	8,768	22,742	95,078	-17.8%	43,310	27,400	17,262	27,728	115,700
Miscellaneous (***)	3,054	738	(275)	56	3,573	-68.4%	56	8,036	28	3,204	11,324		0	0	14	2,364	2,378
Pilot Boat (***)	431,868	504,948	552,276	459,012	1,948,104	2.6%	423,864	484,416	526,872	463,884	1,899,036	7.7%	436,392	501,120	505,992	319,116	1,762,620
Total-Source Section	\$7,297,428	#####	\$10,078,312	\$7,668,422	\$33,996,995	3.9%	\$7,188,392	\$8,610,148	\$9,531,326	\$7,375,808	\$32,705,674	3.7%	\$7,392,204	\$8,884,884	\$9,882,798	\$5,384,068	#####
-----Revenue-----	1st Qtr	2nd Qtr	3rd Qtr		YTD		1st Qtr	2nd Qtr	3rd Qtr		YTD		1st Qtr	2nd Qtr	3rd Qtr		YTD
Mileage (LOA/Zone) (*)	\$2,077,100	\$2,446,867	\$2,590,217	\$2,159,867	\$9,274,051	0.8%	\$2,147,860	2,366,994	\$2,526,891	\$2,158,692	\$9,200,437	2.0%	\$2,226,304	\$2,527,418	\$2,683,074	\$1,585,916	\$9,022,712
Transportation (**)	289,148	257,330	248,000	241,683	1,036,161	0.6%	242,747	265,285	258,331	263,157	1,029,519	2.0%	258,844	279,996	280,626	189,737	1,009,203
Special (***)	4,931,179	6,248,635	7,240,095	5,266,678	23,686,587	5.4%	4,797,785	5,977,868	6,746,104	4,953,960	22,475,717	4.5%	4,907,056	6,077,470	6,919,098	3,608,415	21,512,039
Total -Revenue Section	\$7,297,428	#####	\$10,078,312	\$7,668,227	\$33,996,799	3.9%	\$7,188,392	\$8,610,148	\$9,531,326	\$7,375,808	\$32,705,674	3.7%	\$7,392,204	\$8,884,884	\$9,882,798	\$5,384,068	#####
Revenue/Assignment, w/o Transp	\$4,025	\$4,550	\$5,008	\$4,346	\$4,500	3.0%	\$4,074	\$4,472	\$4,807	\$4,064	\$4,369	0.9%	\$4,055	\$4,344	\$4,723	\$4,064	4,331
Other Stats	\$7,008,279	\$8,695,502	\$9,830,312	\$7,426,545	\$32,960,638		\$6,945,645	\$8,344,862	\$9,272,995	\$7,112,652	\$31,676,154		\$7,133,360	\$8,604,888	\$9,602,172	\$5,194,331	\$30,534,751
Pilot Boat Charges	\$431,868	\$504,948	\$552,276	\$459,012	\$1,948,104	2.6%	\$423,864	\$484,416	\$526,872	\$463,884	\$1,899,036	7.7%	\$436,392	\$501,120	\$505,992	\$319,116	\$1,762,620
Pilot Boat Assignments	1,241	1,451	1,587	1,319	5,598	2.6%	1,218	1,393	1,514	1,333	5,458	7.8%	1,254	1,440	1,453	917	5,064
Avg	\$348	\$348	\$348	\$348	\$348	0.0%	\$348	\$348	\$348	\$348	\$348		\$348	\$348	348	348	\$348
Tonnage Surcharge Revenue	\$4,021,037	\$5,334,262	\$6,277,601	\$4,434,988	\$20,067,888	6.0%	\$3,975,144	\$5,045,826	\$5,812,519	\$4,106,110	\$18,939,599	5.6%	\$3,970,859	\$5,078,192	\$5,923,841	\$2,968,284	\$17,941,176
Tonnage Surcharge Charge # moves	1,661	1,881	1,935	1,662	7,139	0.7%	1,662	1,829	1,897	1,700	7,088	2.2%	1,718	1,948	2,020	1,249	6,935
Avg Tonnage Surcharge/Move	\$2,421	\$2,836	\$3,244	\$2,668	\$2,811	5.2%	\$2,392	\$2,759	\$3,064	\$2,415	\$2,672	3.3%	\$2,311	\$2,607	2,933	\$2,377	\$2,587