

Exh. JR-9  
Docket TP-220513  
Witness: Jordan Royer

**BEFORE THE STATE OF WASHINGTON  
UTILITIES AND TRANSPORTATION COMMISSION**

WASHINGTON UTILITIES AND  
TRANSPORTATION COMMISSION,

Complainant,

v.

PUGET SOUND PILOTS,

Respondent.

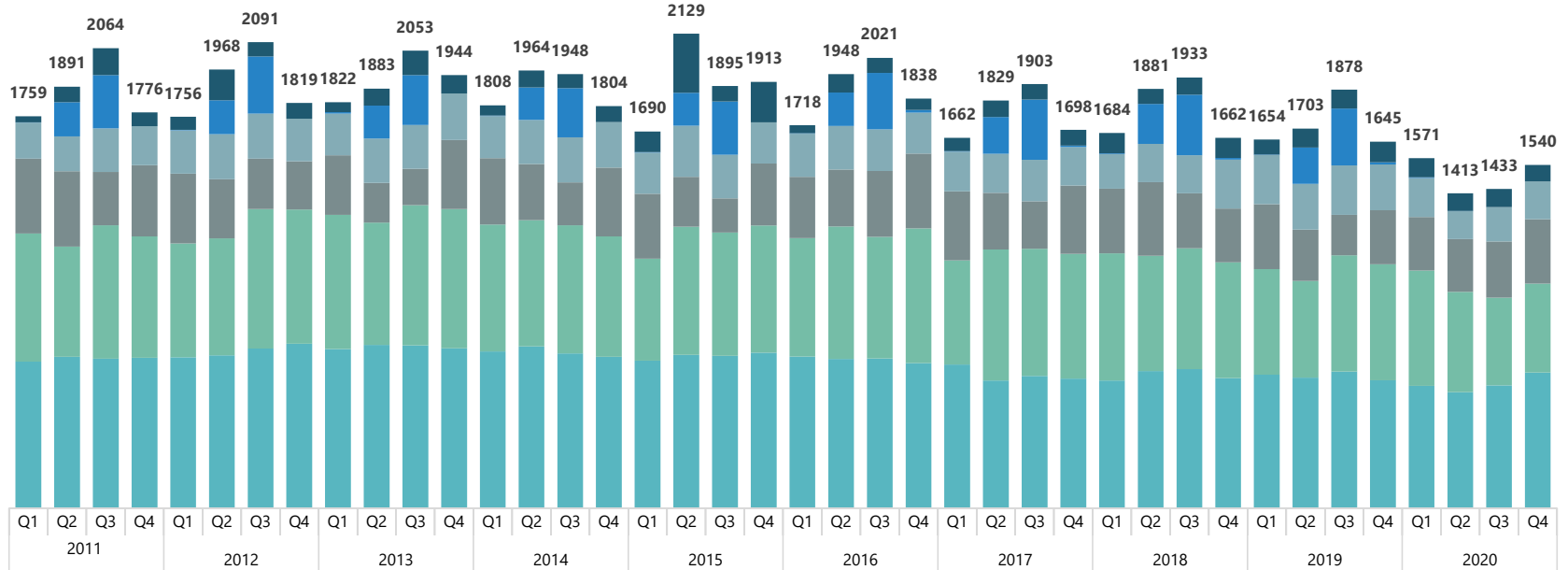
Docket No. TP-220513

**EXHIBIT TO TESTIMONY OF  
Jordan Royer  
ON BEHALF OF  
PACIFIC MERCHANT SHIPPING ASSOCIATION**

**BPC Quarterly Reports, 2021**

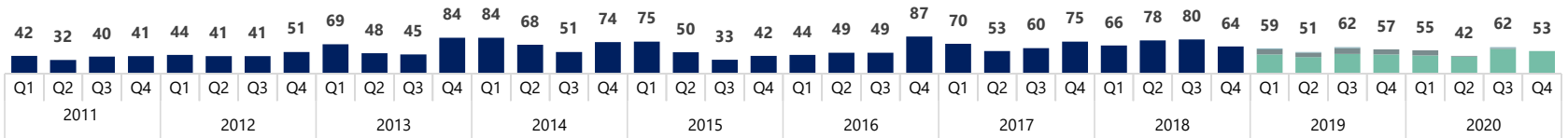
**FEBRUARY 10, 2023**

**Puget Sound District**  
**2011-2020 Moves by Quarter with Vessel type**



	2011				2012				2013				2014				2015				2016				2017				2018				2019				2020							
	Q1	Q2	Q3	Q4	Q1	Q2	Q3	Q4	Q1	Q2	Q3	Q4	Q1	Q2	Q3	Q4	Q1	Q2	Q3	Q4	Q1	Q2	Q3	Q4	Q1	Q2	Q3	Q4	Q1	Q2	Q3	Q4	Q1	Q2	Q3	Q4	Q1	Q2	Q3	Q4				
6 Other	27	69	121	62	58	138	64	71	45	76	110	83	46	76	63	71	92	265	70	182	35	83	68	51	60	74	69	71	92	67	78	90	67	78	90	67	85	85	93	86	79	82	74	74
5 Passenger	2	154	239	0	2	152	256	0	6	148	223	0	2	148	239	0	2	148	239	0	3	150	253	12	2	165	271	6	3	179	271	8	2	163	255	10	3	1	0	0	0	0	0	0
4 Carrier/RoRo	162	156	195	175	195	202	203	192	187	199	197	209	189	198	202	205	185	229	196	184	193	196	187	184	178	175	186	173	155	172	171	220	221	205	222	205	175	125	154	169				
3 Bulker	335	338	239	320	313	265	226	216	268	178	163	310	298	252	193	309	292	224	153	279	275	255	296	336	310	254	213	307	291	330	247	241	291	231	181	243	241	237	253	289				
2 Tanker	576	495	599	544	511	525	626	602	602	550	630	625	570	566	575	540	457	575	553	570	532	595	545	604	468	588	571	560	570	518	542	519	474	433	522	520	517	450	393	399				
1 Container	657	679	671	675	677	686	716	738	714	732	730	717	703	726	694	679	662	688	684	698	680	669	672	651	644	573	593	581	573	615	624	584	599	586	613	574	549	521	551	609				
TOTAL	1759	1891	2064	1776	1756	1968	2091	1819	1822	1883	2053	1944	1808	1964	1948	1804	1690	2129	1895	1913	1718	1948	2021	1838	1662	1829	1903	1698	1684	1881	1933	1662	1654	1703	1878	1645	1571	1413	1433	1540				

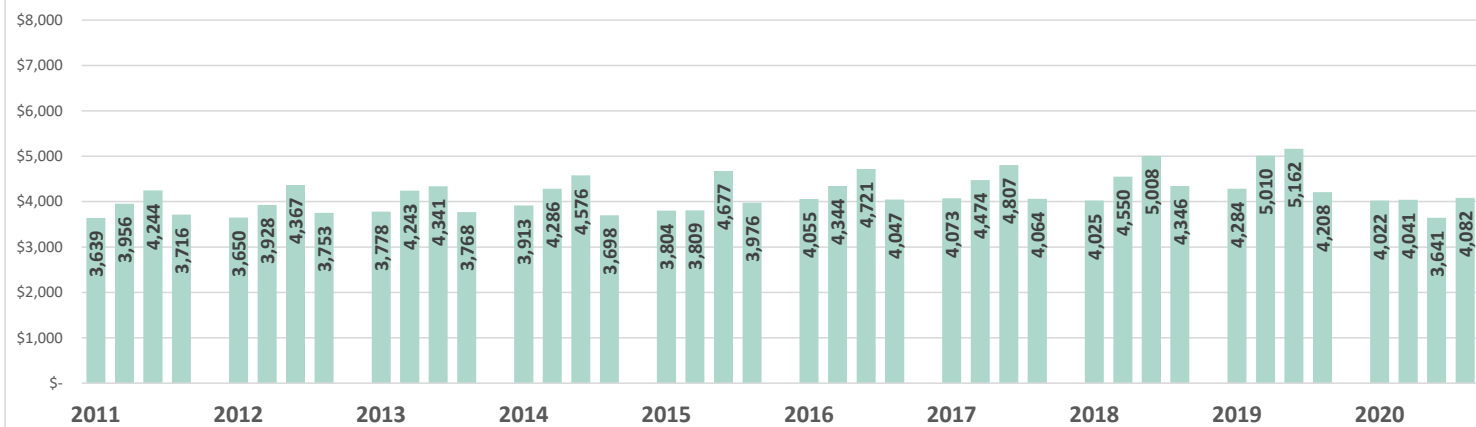
**Grays Harbor District**  
**2011-2020 Moves by Quarter with vessel type when available**



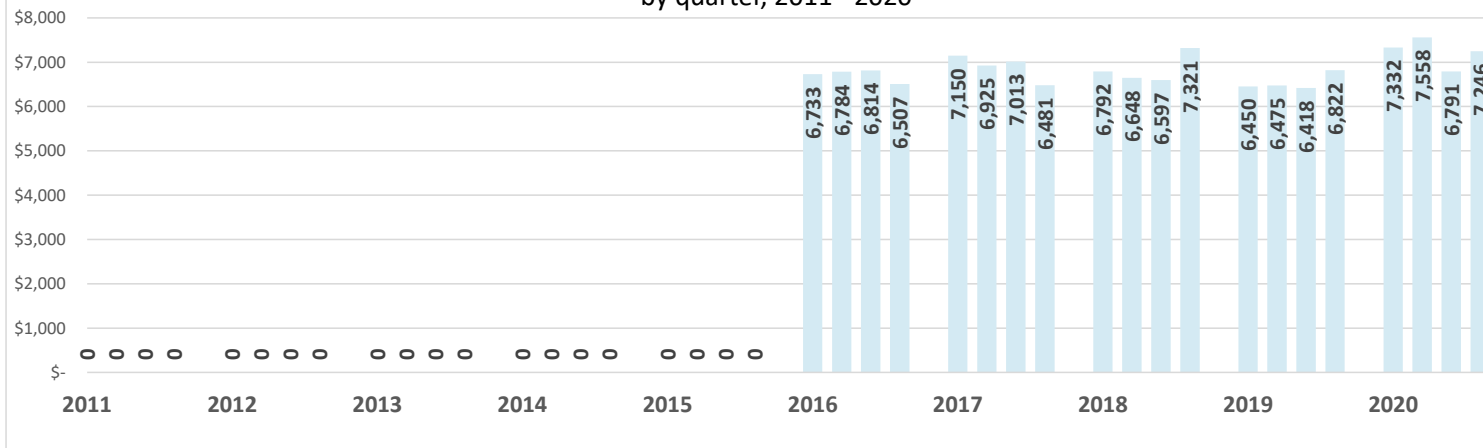
	2011				2012				2013				2014				2015				2016				2017				2018				2019				2020			
	Q1	Q2	Q3	Q4	Q1	Q2	Q3	Q4	Q1	Q2	Q3	Q4	Q1	Q2	Q3	Q4	Q1	Q2	Q3	Q4	Q1	Q2	Q3	Q4	Q1	Q2	Q3	Q4	Q1	Q2	Q3	Q4	Q1	Q2	Q3	Q4				
GH BB/Log																																								
GH Ro-Ro																																								
GH Bulker																																								
GH All Types	42	32	40	41	44	41	41	51	69	48	45	84	84	68	51	74	75	50	33	42	44	49	49	87	70	53	60	75	66	78	80	64								
TOTAL	42	32	40	41	44	41	41	51	69	48	45	84	84	68	51	74	75	50	33	42	44	49	49	87	70	53	60	75	66	78	80	64	59	51	62	57	55	42	62	53

GH Bulker = 95% dry bulk, 5% liquid bulk (by count) in 2019 & 2020

Puget Sound District  
**Average Revenue per Assignment**  
by quarter, 2011 - 2020



Grays Harbor District  
**Average Revenue per Assignment**  
by quarter, 2011 - 2020



Puget Sound Pilots 2020

edit - 3/2/2021 - corrected pilot counts and assignment averages at bottom of page

Assignments per Pilot per Month

(original report 2/18/2021 mis-counted number of pilots by 1)

2020-01	2020-02	2020-03	2020-04	2020-05	2020-06	2020-07	2020-08	2020-09	2020-10	2020-11	2020-12	Avg	Total
15	12	15	16	8	13	17	13	17				14.00	126
14	14	14	15	15	10	12	12	15	13	13	13	13.33	160
14	15	14	13	10	10	14	15	14	14	9	14	13.00	156
10	17	12	15	10	6	16	17	16	15	7	12	12.75	153
NFFD	NFFD	12	16	13	15	10	12	11	12	15	11	12.70	127
9	NFFD	NFFD	15	7	13	13	16	16	8	13	17	12.70	127
13	12	15	13	9	11	15	15	13	15	10	11	12.67	152
14	13	8	14	12	13	12	5	14	17	14	16	12.67	152
18	8	12	11	11	18	6	12	15	17	15	8	12.58	151
18	5	16	14	11	12	6	13	11	19	15	10	12.50	150
				12	11	11	15	9	13	16	11	12.25	98
9	13	18	15	12	6	13	13	11	13	6	17	12.17	146
13	15	11	12	10	9	10	17	9	14	11	14	12.08	145
13	15	14	14	10	14	12	7	13	13	5	14	12.00	144
12	11	15	14	11	12	9						12.00	84
										11	13	12.00	24
											12	12.00	12
12	11	12	12	13	10	12	14	11	15	10	11	11.92	143
11	14	8	12	12	12	14	11	14	12	12	10	11.83	142
7	15	16	11	11	11	14	12	11	12	12	9	11.75	141
17	12	7	10	13	10	11	12	11	13	13	12	11.75	141
13	14	15	1	14	9	11	14	2	17	15	16	11.75	141
15	11	18	12	11	10	8	12	11	12	11	9	11.67	140
12	6	14	13	10	14	11	17	14	7	13	9	11.67	140
12	16	12	12	10	13	7	8	13	12	11	13	11.58	139
11	9	12	13	9	10	11	15	10	16	13	10	11.58	139
9	17	17	15	15	5	3	NFFD	NFFD	NFFD	NFFD	NFFD	11.57	81
15	16	9	13	12	12	6	2	12	15	11	15	11.50	138
13	15	16	3	12	11	11	11	5	17	14	10	11.50	138
18	5	11	12	13	14	5	9	10	16	18	7	11.50	138
16	11	14	11	12	7	10	13	11	11	11	10	11.42	137
18	15	8	3	9	11	14	14	6	14	12	13	11.42	137
	13	11	12	8	15	12	8	12	11	12	10	11.27	124
11	9	13	10	10	11	14	13	9	12	11	12	11.25	135
11	10	14	13	6	13	11	13	13	6	12	13	11.25	135
11	14	8	11									11.00	44
17	13	3	1	14	9	14	13	17	14	8	7	10.83	130
14	3	12	7	14	15	5	13	10	15	13	6	10.58	127
			3	12	12	12	2	13	14	12	14	10.44	94
17	3	17	16	5	11	9	5	NFFD	NFFD	NFFD	NFFD	10.38	83
18	10	8	12	12	11	7	2	8	13	11	12	10.33	124
									6	13	12	10.33	31
9	14	11	9	9	0	9	16	13	11	6	12	9.92	119
8	11	14	3	8	5	8	16	13	13	6	12	9.75	117
8	13	7	11	12	8	9	4	13	8	12	11	9.67	116
5	14	6	NFFD	NFFD	NFFD	NFFD	NFFD	NFFD	NFFD	9	14	9.60	48
5	12	9	10	0	0	14	14	13	13	9	14	9.42	113
11	9	11	10	10	11	6	8	14	10	2	7	9.08	109
4	9	6	10	13	5	9	9	11	12	7	1	8.00	96
8	14	12	6	9	0	2	0	12	14	7	10	7.83	94
8	14	5	0	1	0	2	0	1	0	11	14	4.67	56
9	9	3	0	0	0	0	0	0	17	5	0	3.58	43
2	6	4	4	2	0	0	2	3	4	0	4	2.58	31

Target  
Assignment  
Level  
= 145/yr  
or 12/mo

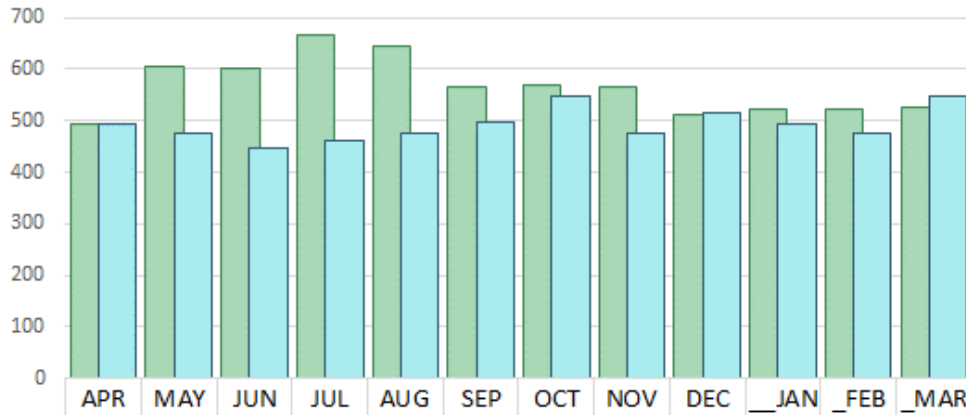
(president)

Total Assigns	547	537	539	498	482	458	467	484	500	565	502	532	6111
Licensed Pilots minus president	45	45	46	47	47	47	47	45	44	44	46	47	
NFFD	1	2	1	1	1	1	1	2	3	3	2	2	
Available	44	43	45	46	46	46	46	43	41	41	44	45	
Assigns/Available	12.43	12.49	11.98	10.83	10.48	9.96	10.15	11.26	12.20	13.78	11.41	11.82	

2020 year overall avg assigns per avail pilot per month: 11.53

64% ● 11 or more  
24% ● 6 to 10  
12% ● Less than 6

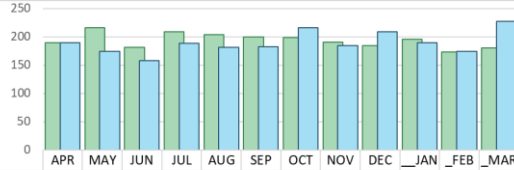
### Puget Sound District Total Vessel Moves Per Month During Pandemic Year and Preceding Year



■ 2019 April - through 2020 March  
■ 2020 April - through 2021 March

Month	2019 April - through 2020 March	2020 April - through 2021 March
APR	495	492
MAY	606	475
JUN	602	446
JUL	667	460
AUG	644	475
SEP	567	498
OCT	568	548
NOV	564	477
DEC	513	515
JAN	522	492
FEB	522	476
MAR	527	546

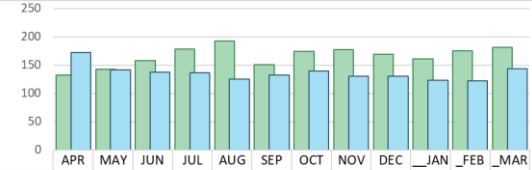
#### CONTAINER VESSELS



■ 2019 April - through 2020 March  
■ 2020 April - through 2021 March

Month	2019 April - through 2020 March	2020 April - through 2021 March
APR	189	189
MAY	216	174
JUN	181	158
JUL	209	188
AUG	204	181
SEP	200	182
OCT	199	216
NOV	191	184
DEC	184	209
JAN	196	189
FEB	173	174
MAR	180	227

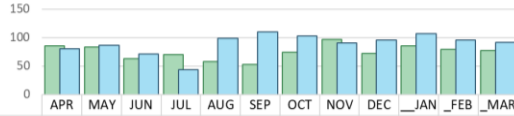
#### TANKER VESSELS



■ 2019 April - through 2020 March  
■ 2020 April - through 2021 March

Month	2019 April - through 2020 March	2020 April - through 2021 March
APR	132	172
MAY	143	141
JUN	158	137
JUL	178	136
AUG	193	125
SEP	151	132
OCT	174	139
NOV	177	130
DEC	169	130
JAN	161	123
FEB	175	122
MAR	181	144

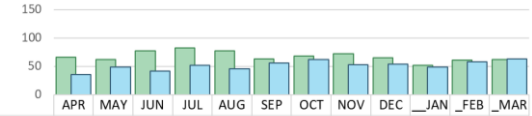
#### BULKER VESSELS



■ 2019 April - through 2020 March  
■ 2020 April - through 2021 March

Month	2019 April - through 2020 March	2020 April - through 2021 March
APR	85	80
MAY	83	86
JUN	63	71
JUL	70	44
AUG	58	99
SEP	53	110
OCT	74	103
NOV	97	90
DEC	72	96
JAN	85	107
FEB	79	96
MAR	77	91

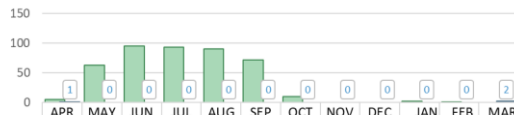
#### CARRIER & RO-RO



■ 2019 April - through 2020 March  
■ 2020 April - through 2021 March

Month	2019 April - through 2020 March	2020 April - through 2021 March
APR	66	35
MAY	62	49
JUN	77	41
JUL	82	52
AUG	77	46
SEP	63	56
OCT	68	62
NOV	72	53
DEC	65	54
JAN	52	49
FEB	61	58
MAR	62	63

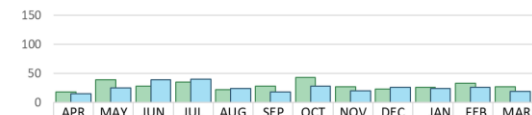
#### PASSENGER



■ 2019 April - through 2020 March  
■ 2020 April - through 2021 March

Month	2019 April - through 2020 March	2020 April - through 2021 March
APR	5	1
MAY	63	0
JUN	95	0
JUL	93	0
AUG	90	0
SEP	72	0
OCT	10	0
NOV	0	0
DEC	0	0
JAN	2	0
FEB	1	0
MAR	0	2

#### OTHER



■ 2019 April - through 2020 March  
■ 2020 April - through 2021 March

Month	2019 April - through 2020 March	2020 April - through 2021 March
APR	18	15
MAY	39	25
JUN	28	39
JUL	35	40
AUG	22	24
SEP	28	18
OCT	43	28
NOV	27	20
DEC	23	26
JAN	26	24
FEB	33	26
MAR	27	19

Puget Sound Pilots 2020

Assignments per Pilot per Month

2020-01	2020-02	2020-03	2020-04	2020-05	2020-06	2020-07	2020-08	2020-09	2020-10	2020-11	2020-12	Avg	Total
15	12	15	16	8	13	17	13	17				14.00	126
14	14	14	15	15	10	12	12	15	13	13	13	13.33	160
14	15	14	13	10	10	14	15	14	14	9	14	13.00	156
10	17	12	15	10	6	16	17	16	15	7	12	12.75	153
NFFD	NFFD	12	16	13	15	10	12	11	12	15	11	12.70	127
9	NFFD	NFFD	15	7	13	13	16	16	8	13	17	12.70	127
13	12	15	13	9	11	15	15	13	15	10	11	12.67	152
14	13	8	14	12	13	12	5	14	17	14	16	12.67	152
18	8	12	11	11	18	6	12	15	17	15	8	12.58	151
18	5	16	14	11	12	6	13	11	19	15	10	12.50	150
				12	11	11	15	9	13	16	11	12.25	98
9	13	18	15	12	6	13	13	11	13	6	17	12.17	146
13	15	11	12	10	9	10	17	9	14	11	14	12.08	145
13	15	14	14	10	14	12	7	13	13	5	14	12.00	144
12	11	15	14	11	12	9						12.00	84
										11	13	12.00	24
											12	12.00	12
12	11	12	12	13	10	12	14	11	15	10	11	11.92	143
11	14	8	12	12	12	14	11	14	12	12	10	11.83	142
7	15	16	11	11	11	14	12	11	12	12	9	11.75	141
17	12	7	10	13	10	11	12	11	13	13	12	11.75	141
13	14	15	1	14	9	11	14	2	17	15	16	11.75	141
15	11	18	12	11	10	8	12	11	12	11	9	11.67	140
12	6	14	13	10	14	11	17	14	7	13	9	11.67	140
12	16	12	12	10	13	7	8	13	12	11	13	11.58	139
11	9	12	13	9	10	11	15	10	16	13	10	11.58	139
9	17	17	15	15	5	3	NFFD	NFFD	NFFD	NFFD	NFFD	11.57	81
15	16	9	13	12	12	6	2	12	15	11	15	11.50	138
13	15	16	3	12	11	11	11	5	17	14	10	11.50	138
18	5	11	12	13	14	5	9	10	16	18	7	11.50	138
16	11	14	11	12	7	10	13	11	11	11	10	11.42	137
18	15	8	3	9	11	14	14	6	14	12	13	11.42	137
	13	11	12	8	15	12	8	12	11	12	10	11.27	124
11	9	13	10	10	11	14	13	9	12	11	12	11.25	135
11	10	14	13	6	13	11	13	13	6	12	13	11.25	135
11	14	8	11									11.00	44
17	13	3	1	14	9	14	13	17	14	8	7	10.83	130
14	3	12	7	14	15	5	13	10	15	13	6	10.58	127
			3	12	12	12	2	13	14	12	14	10.44	94
17	3	17	16	5	11	9	5	NFFD	NFFD	NFFD	NFFD	10.38	83
18	10	8	12	12	11	7	2	8	13	11	12	10.33	124
									6	13	12	10.33	31
9	14	11	9	9	0	9	16	13	11	6	12	9.92	119
8	11	14	3	8	5	8	16	13	13	6	12	9.75	117
8	13	7	11	12	8	9	4	13	8	12	11	9.67	116
5	14	6	NFFD	NFFD	NFFD	NFFD	NFFD	NFFD	NFFD	9	14	9.60	48
5	12	9	10	0	0	14	14	13	13	9	14	9.42	113
11	9	11	10	10	11	6	8	14	10	2	7	9.08	109
4	9	6	10	13	5	9	9	11	12	7	1	8.00	96
8	14	12	6	9	0	2	0	12	14	7	10	7.83	94
8	14	5	0	1	0	2	0	1	0	11	14	4.67	56
9	9	3	0	0	0	0	0	0	17	5	0	3.58	43
2	6	4	4	2	0	0	2	3	4	0	4	2.58	31

Target  
 Assignment  
 Level  
 = 145/yr  
 or 12/mo

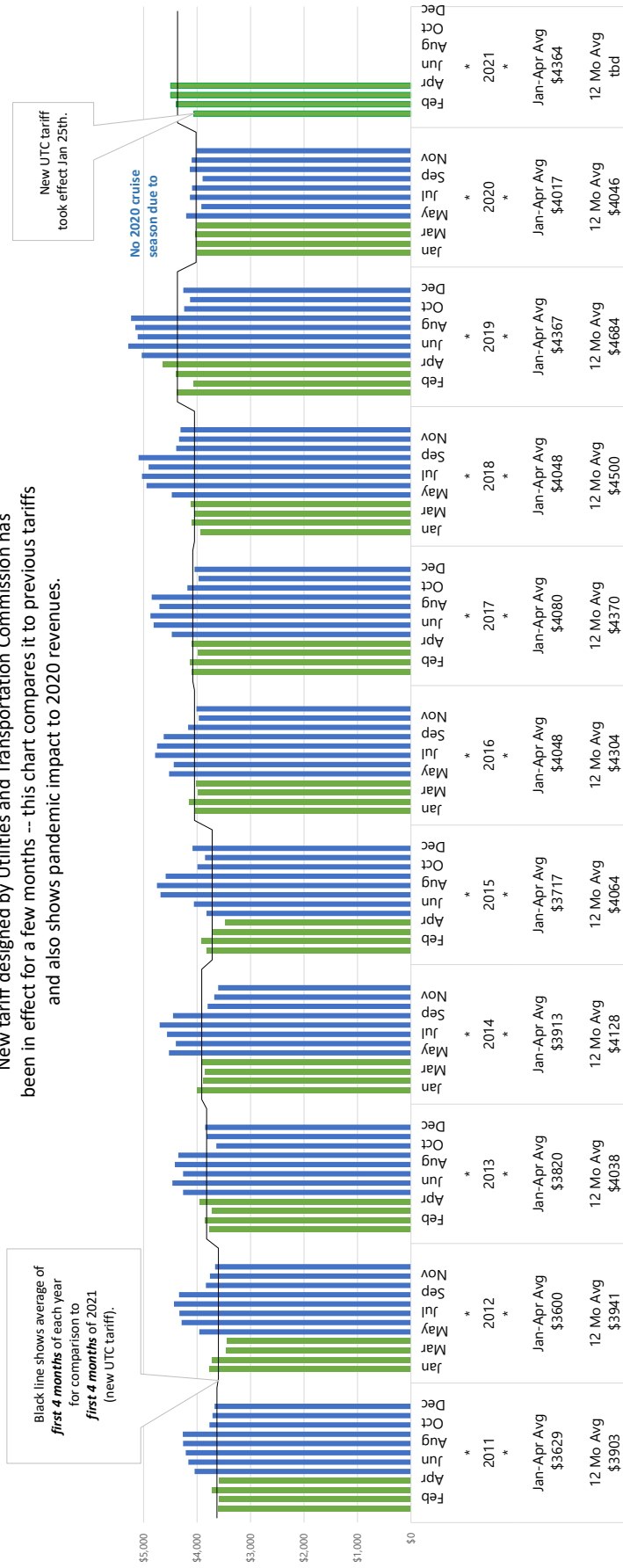
(president)

Total Assigns	547	537	539	498	482	458	467	484	500	565	502	532	6111
Licensed Pilots minus president	44	44	45	46	46	46	46	44	43	43	45	46	
NFFD	1	2	1	1	1	1	1	2	3	3	2	2	
Available	43	42	44	45	45	45	45	42	40	40	43	44	
Assigns/Available	12.72	12.79	12.25	11.07	10.71	10.18	10.38	11.52	12.50	14.13	11.67	12.09	

64% ● 11 or more  
 24% ● 6 to 10  
 12% ● Less than 6

**Puget Sound District Revenue per Assignment 2011-2021**

New tariff designed by Utilities and Transportation Commission has been in effect for a few months -- this chart compares it to previous tariffs and also shows pandemic impact to 2020 revenues.



**Puget Sound District total assignments per day 2019 and 2020**

2019								
Week #	Month	Sun	Mon	Tue	Wed	Thu	Fri	Sat
1	Jan			13	28	27	17	22
2		31	13	17	26	21	21	24
3		18	12	16	14	23	24	12
4		11	17	21	20	23	19	17
5		14	16	18	15	20		
5	Feb						20	22
6		13	16	17	21	23	23	18
7		25	15	15	19	27	20	24
8		17	27	19	22	31	23	18
9		26	9	26	14	24		
10	Mar						18	20
11		14	12	10	18	23	18	13
12		12	14	17	14	17	18	23
13		21	12	22	17	16	22	17
14		9	15	22	18	20	23	20
14		15						
15	Apr		14	16	19	24	16	12
16		11	14	16	15	16	16	26
17		12	24	19	19	20	9	17
18		16	14	14	20	18	20	16
18		24	13	16				
19	May				21	17	23	16
20		24	12	18	19	15	17	23
21		19	11	22	15	30	22	27
22		20	11	20	23	21	19	20
23		17	16	21	19	18	37	
23	Jun							23
24		21	17	18	17	18	26	23
25		21	13	21	18	23	25	19
26		19	23	14	19	23	26	29
27		16	10	19	16	22	25	20
27		28						
28	Jul		27	34	15	14	19	23
29		22	17	20	17	26	25	21
30		24	11	35	30	18	27	22
31		21	10	22	19	25	31	22
31		18	17	21	24			
32	Aug					24	27	19
33		16	9	17	19	29	26	21
34		27	16	25	21	18	20	27
35		18	9	19	26	26	25	22
36		15	17	23	21	20	24	24
36	Sep	16	10	16	17	17	29	26
37		12	15	16	20	13	25	24
38		21	5	13	22	15	31	18
39		20	18	26	21	19	26	22
40		22	17					
40	Oct			28	16	28	24	27
41		10	11	12	25	24	15	13
42		10	15	22	20	14	13	25
43		18	21	15	25	21	22	26
44		18	17	14	14	18		
45	Nov						27	18
46		23	15	13	21	21	26	20
47		10	14	22	22	13	25	21
48		18	12	27	25	17	14	16
49		14	22	17	19	20	16	22
49	Dec	14	11	15	16	26	18	21
50		18	6	20	14	17	12	14
51		21	15	21	16	23	14	17
52		12	17	20	13	19	21	13
53		19	18	19				

**TOTAL 931 762 1019 1004 1085 1129 1065**

*average 18 15 19 19 21 22 20*

**total 6995**

2020								
Week #	Month	Sun	Mon	Tue	Wed	Thu	Fri	Sat
1	Jan				14	17	23	17
2		12	19	11	20	30	18	18
3		15	19	15	16	20	20	21
4		11	14	19	22	22	17	20
5		11	16	15	17	22	16	
5	Feb							19
6		12	12	19	20	17	18	17
7		19	14	14	16	26	18	20
8		14	12	20	17	23	16	26
9		24	19	17	25	25	24	14
10	Mar	15	13	16	12	25	22	21
11		14	10	12	21	21	19	26
12		17	11	27	20	17	26	23
13		16	15	18	18	17	14	14
14		10	11	18				
14	Apr				21	17	19	5
15		17	13	17	17	23	15	21
16		20	14	15	18	10	19	18
17		9	19	18	16	20	15	22
18		19	8	11	21	21		
18	May						17	19
19		14	21	16	22	35	19	13
20		9	16	13	16	19	13	20
21		13	16	11	10	17	13	16
22		10	13	9	9	19	19	16
23		9						
23	Jun		25	7	13	18	18	17
24		8	10	12	15	21	21	20
25		10	17	10	21	21	14	12
26		13	24	12	14	20	15	15
27		12	13	10				
27	Jul				17	18	17	13
28		6	14	12	21	18	16	22
29		11	11	17	12	17	17	13
30		20	13	11	13	20	16	13
31		12	10	10	19	17	21	
31	Aug							17
32		14	15	13	20	23	18	15
33		22	11	16	19	18	17	15
34		12	11	11	12	13	16	15
35		12	11	14	22	27	13	21
36		10	11					
36	Sep			20	23	22	24	21
37		12	14	12	15	16	11	17
38		13	8	18	16	25	13	27
39		17	11	12	17	20	20	10
40		16	18	16	16			
40	Oct					18	15	23
41		13	9	16	14	14	13	13
42		20	16	19	15	23	20	26
43		21	19	15	22	23	26	23
44		18	17	23	21	18	16	16
45	Nov	19	17	11	21	12	15	21
46		12	14	15	22	11	12	25
47		26	18	25	12	19	15	16
48		7	15	15	10	11	20	16
49		26	24					
49	Dec			21	21	15	19	16
50		14	15	11	22	13	13	32
51		17	13	9	20	23	25	15
52		20	15	23	20	18	7	23
53		16	12	17	11	16		

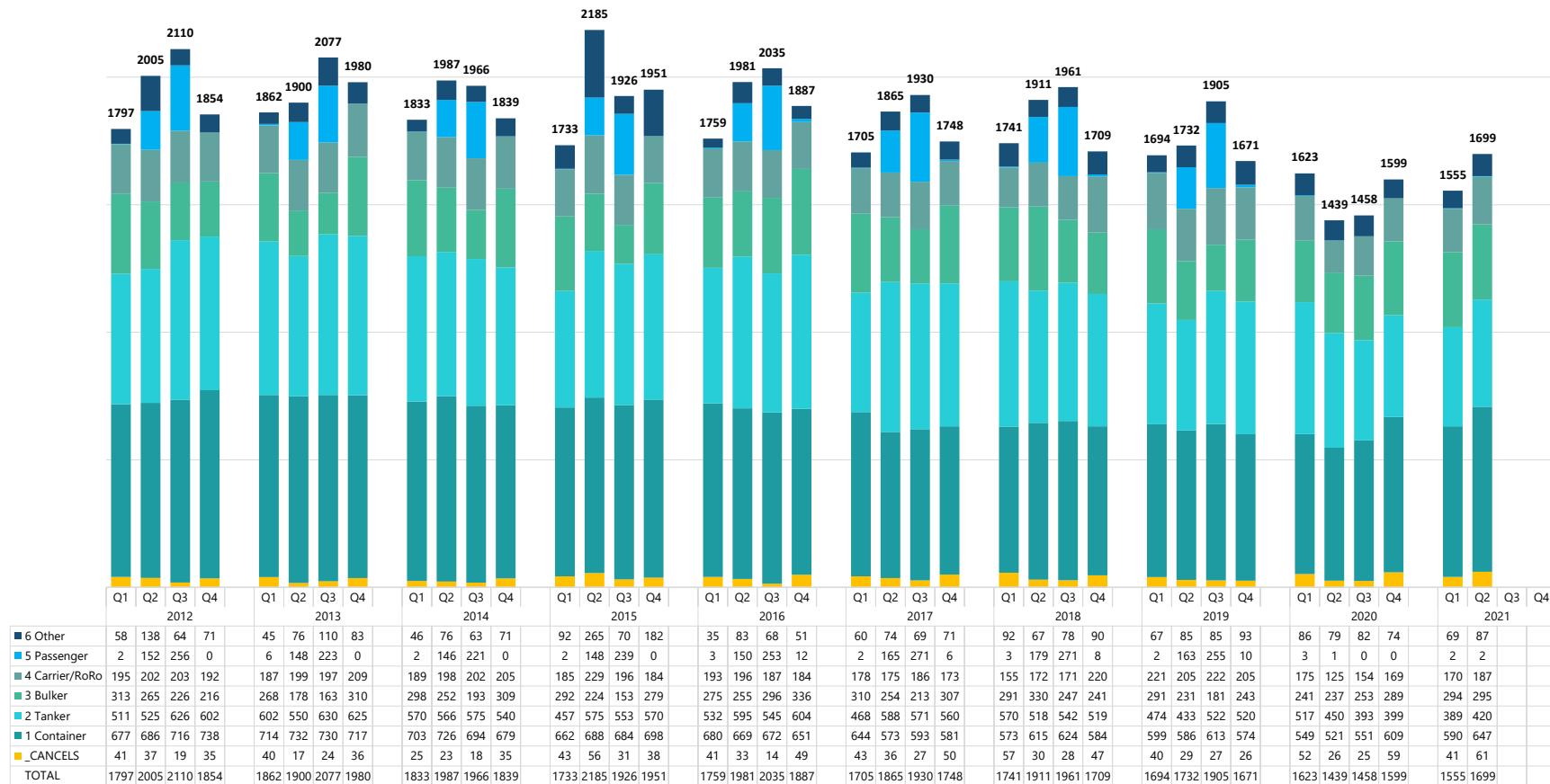
**TOTAL 759 756 784 924 1031 903 954**

*average 15 15 15 17 19 17 18*

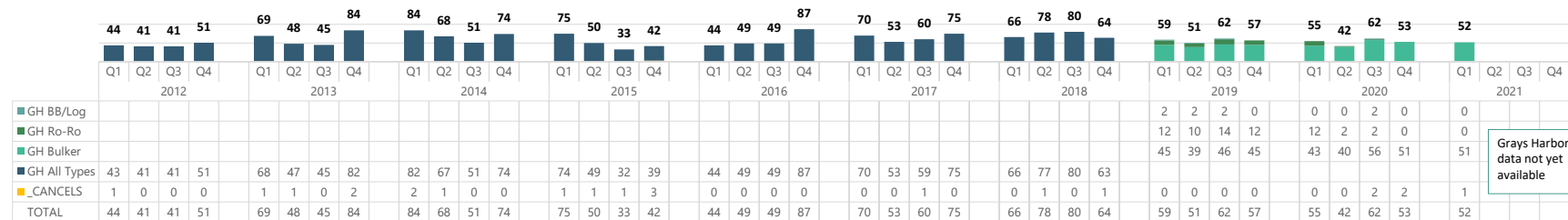
**total 6111**



**Puget Sound Pilotage District Assignments 2012-2021,  
quarterly, by vessel type, including cancellations**



**Grays Harbor Pilotage District Assignments 2012-2021  
quarterly, by vessel type when available, including cancellations**



Grays Harbor Q2  
data not yet  
available

2020 REST RULE EXCEPTIONS & 13 HOUR RULE EXCEPTIONS  
(13 Hour Rule for Multiple Harbor Shifts only)

darker blue shading indicates night assignments

Green indicates exception to 13 hr rule for max duration multiple harbor shifts

Blue indicates exception to 10 hr rest rule.

Puget Sound District

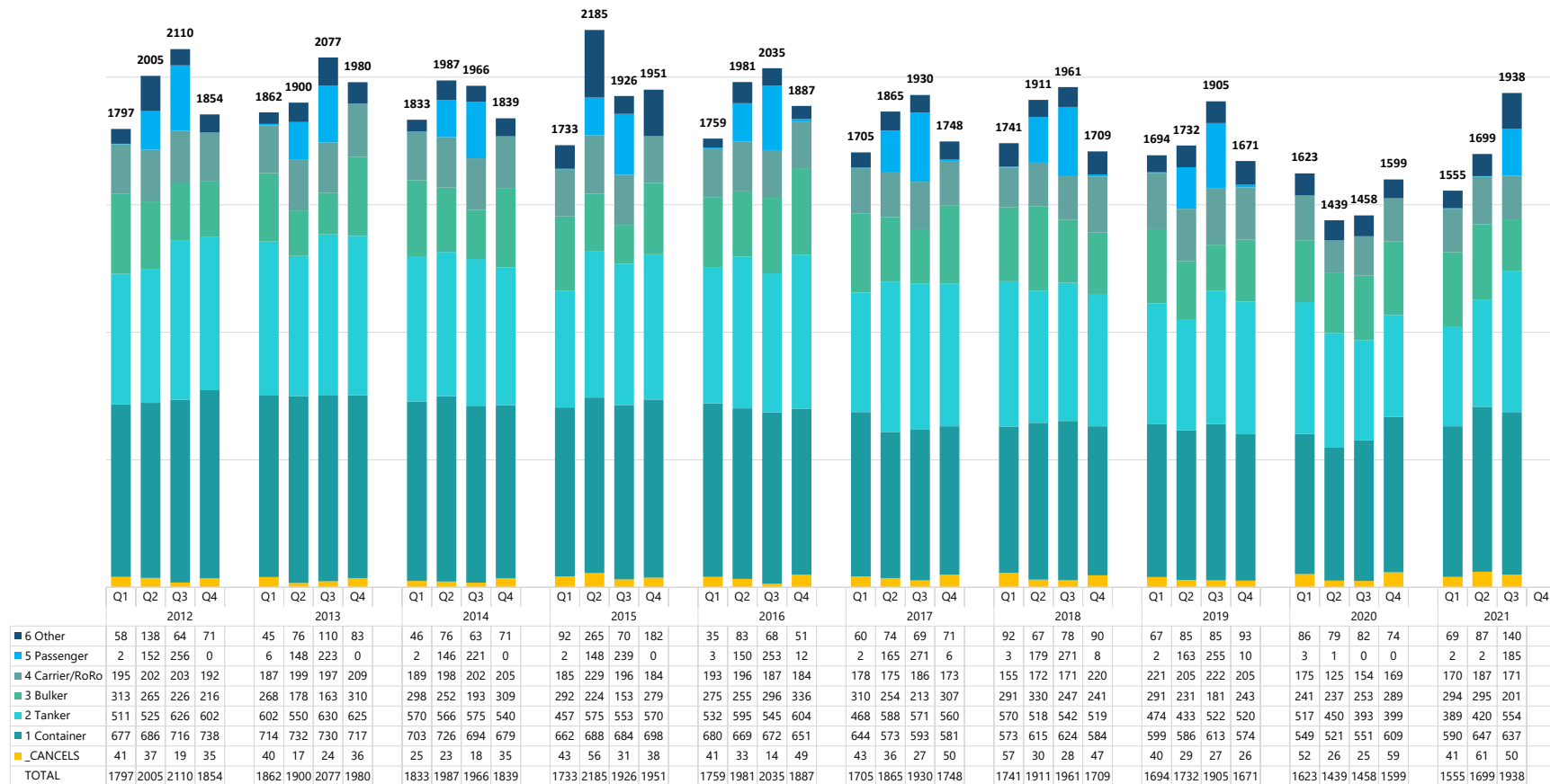
13-hr rule exception 13:36 HRS ASSIGN DURATION Jan 30												
13-hr rule exception 13:45 HRS ASSIGN DURATION Jan 16		rest rule exception 9:56 HRS REST INTERVAL Mar 15		13-hr rule exception 13:49 HRS ASSIGN DURATION May 17				rest rule exception 8:10 HRS REST INTERVAL Sep 7				
13-hr rule exception 13:05 HRS ASSIGN DURATION Jan 5	13-hr rule exception 14:20 HRS ASSIGN DURATION Feb 19	rest rule exception 9:57 HRS REST INTERVAL Mar 12	13-hr rule exception 15:02 HRS ASSIGN DURATION Apr 18	13-hr rule exception 13:08 HRS ASSIGN DURATION May 10	13-hr rule exception 13:10 HRS ASSIGN DURATION Jun 5	NONE	rest rule exception 9:30 HRS REST INTERVAL Aug 5	rest rule exception -7:15 HRS REST INTERVAL Sep 4	NONE	13-hr rule exception 16:40 HRS ASSIGN DURATION Nov 1	rest rule exception 9:12 HRS REST INTERVAL Dec 2	
<b>JAN</b>	<b>FEB</b>	<b>MAR</b>	<b>APR</b>	<b>MAY</b>	<b>JUN</b>	<b>JUL</b>	<b>AUG</b>	<b>SEP</b>	<b>OCT</b>	<b>NOV</b>	<b>DEC</b>	
Q1 = 6			Q2 = 4			Q3 = 3			Q4 = 2			

Grays Harbor District

rest rule exception 9:00 HRS REST INTERVAL Jan 15												
13-hr rule exception 16:00 HRS ASSIGN DURATION Jan 14	rest rule exception 9:45 HRS REST INTERVAL Feb 24	rest rule exception 9:18 HRS REST INTERVAL Mar 20						rest rule exception 9:00 HRS REST INTERVAL Sep 20				
13-hr rule exception 14:36 HRS ASSIGN DURATION Jan 9	rest rule exception 8:30 HRS REST INTERVAL Feb 6	rest rule exception 8:54 HRS REST INTERVAL Mar 9	NONE	rest rule exception 9:00 HRS REST INTERVAL May 4	NONE	NONE	NONE	13-hr rule exception 14:48 HRS ASSIGN DURATION Sep 14	NONE	NONE	NONE	
<b>JAN</b>	<b>FEB</b>	<b>MAR</b>	<b>APR</b>	<b>MAY</b>	<b>JUN</b>	<b>JUL</b>	<b>AUG</b>	<b>SEP</b>	<b>OCT</b>	<b>NOV</b>	<b>DEC</b>	
Q1 = 7			Q2 = 1			Q3 = 2			Q4 = 0			

**PSP Q1 2020:** Two rest rule exceptions, only minutes short of the required 10 hours. Four 13 hr rule exceptions due to delays, underestimating of time required.  
**PSP Q2 2020:** No rest rule exceptions. Four 13 hr rule exceptions due to delays, underestimating time required. (One harbor shift combination with 15 hrs duration won't be dispatched again.)  
**PSP Q3 2020:** Three rest rule exceptions. One (Sep 4) was due to pilot going directly from 1st to 2nd job, to assist vessel dragging anchor in vicinity. No 13 hr rule exceptions.  
**PSP Q4 2020:** One rest rule exception due to pilot departing early to assist vessel coming off SE86 with serious hatch issue and needing to anchor. One 13 hr rule exception due to many hours delays.

**Puget Sound Pilotage District Assignments 2012-2021,  
quarterly, by vessel type, including cancellations**



**Grays Harbor Pilotage District Assignments 2012-2021  
quarterly, by vessel type when available, including cancellations**

