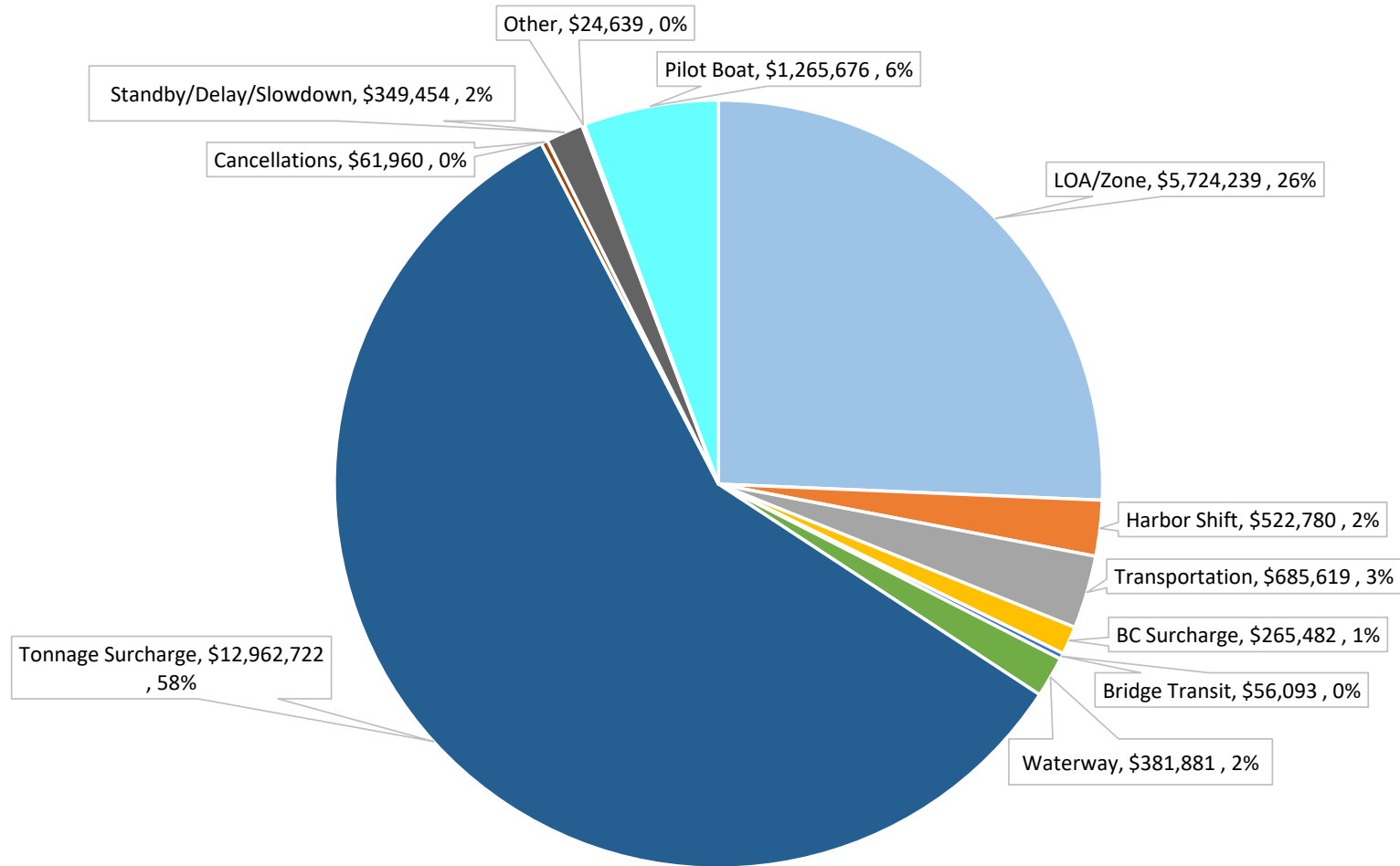


Puget Sound District YTD Revenue Per Assignment



YTD 2017 PSP Source of Revenue



LOA/Zone

Harbor Shift

Transportation

BC Surcharge

Bridge Transit

Waterway

Tonnage Surcharge

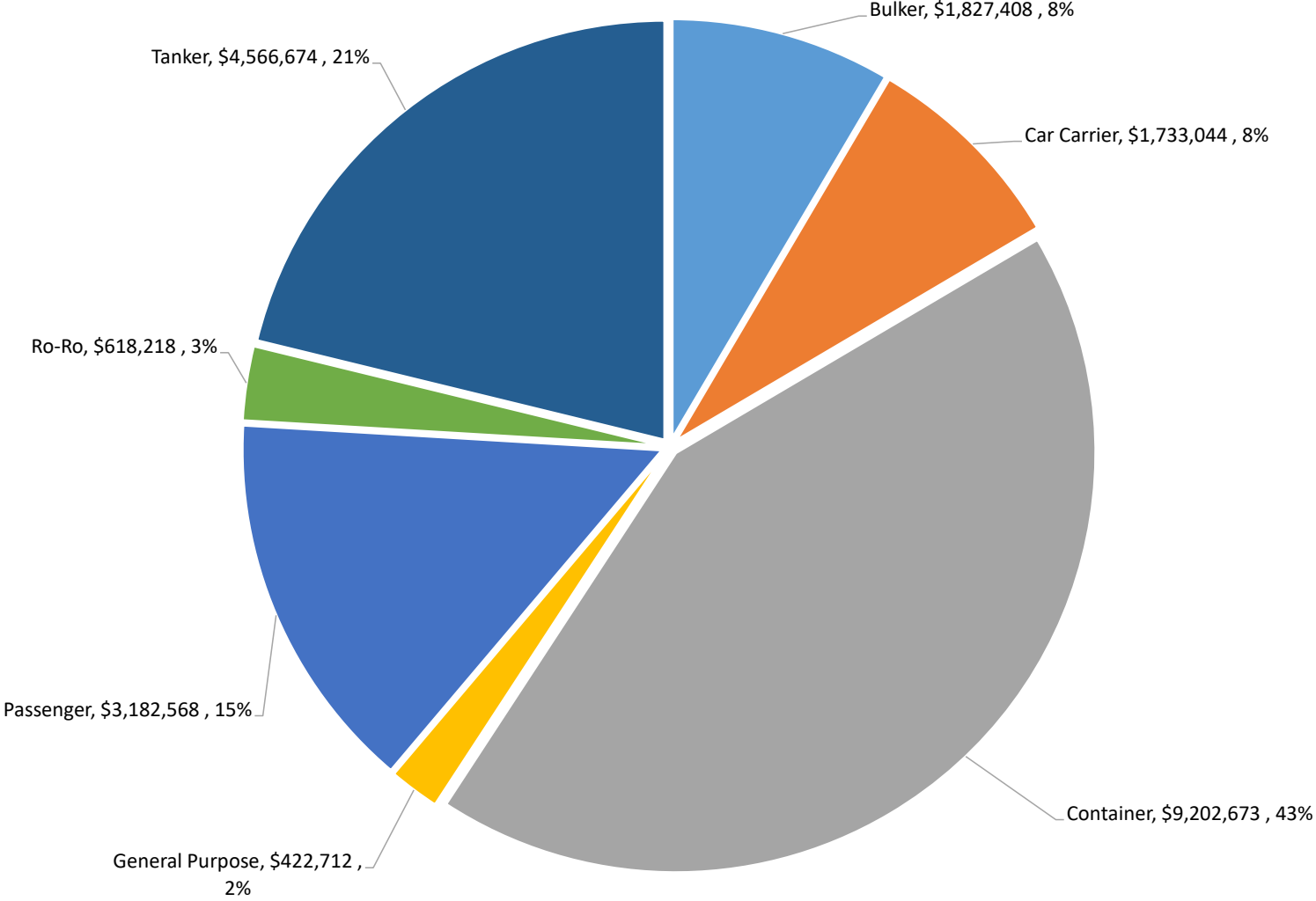
Cancellations

Standby/Delay/Slowdown

Other

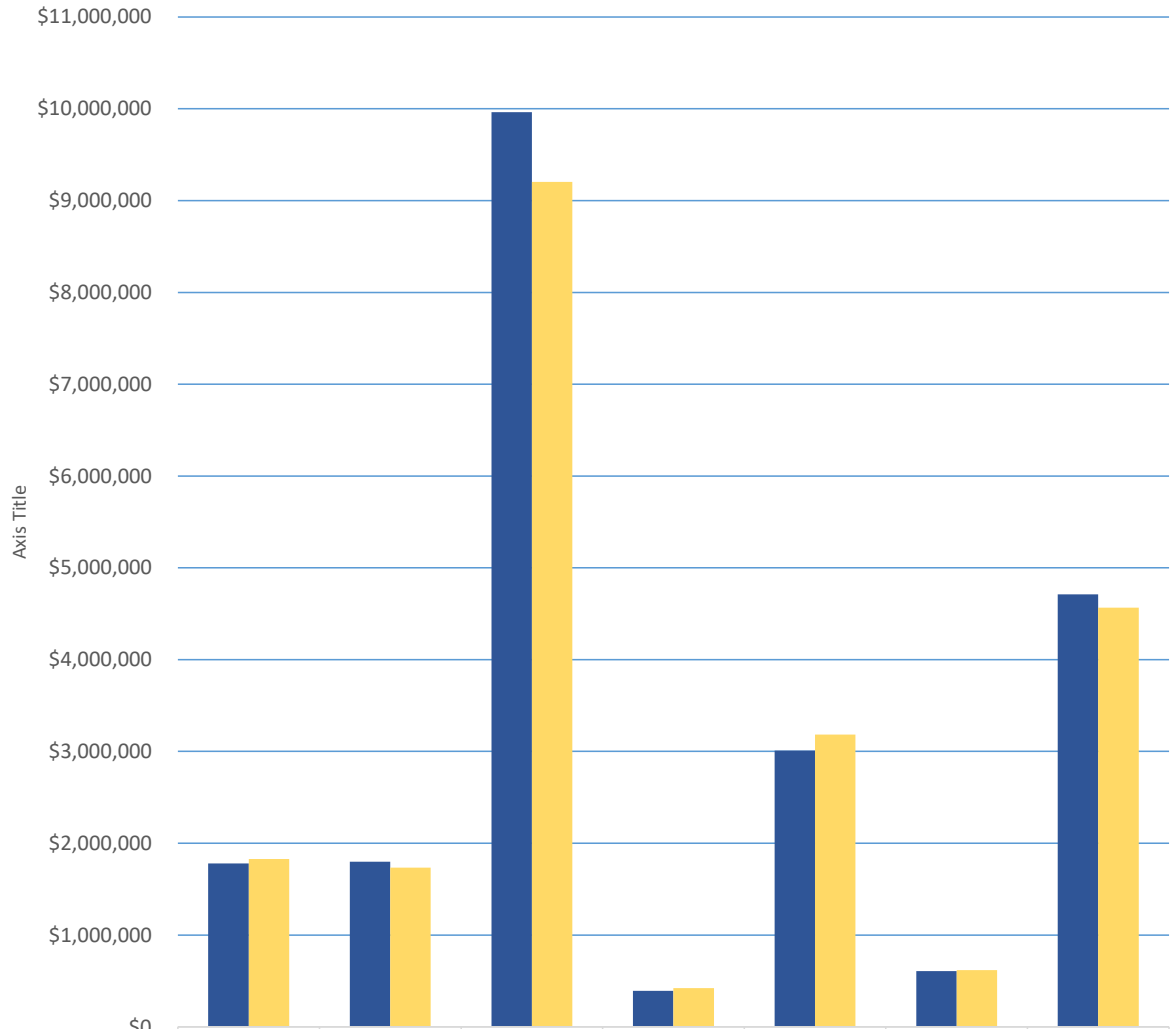
Pilot Boat

**PSP Revenue by Vessel Type
Through August 2017**



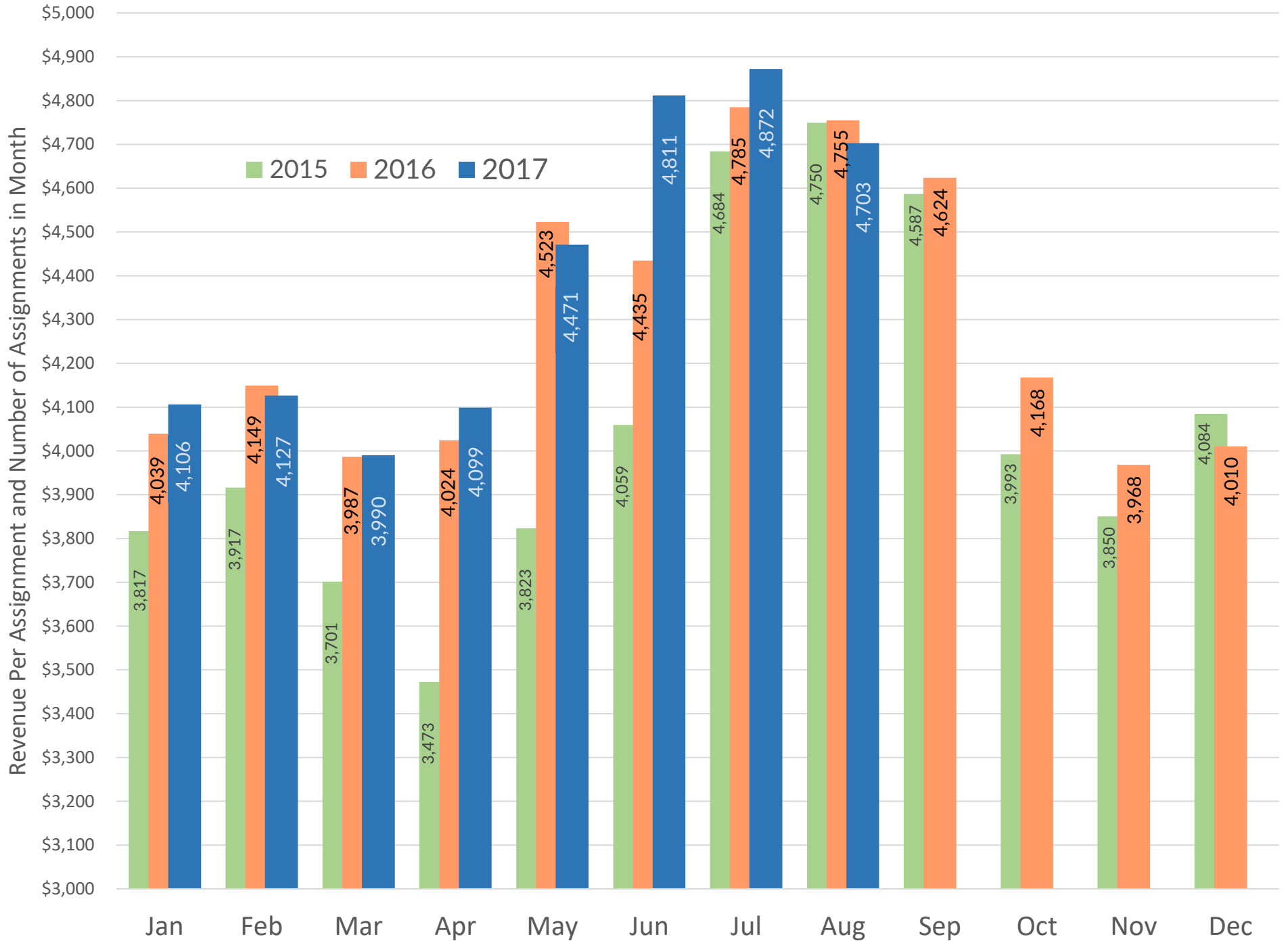
■ Bulker ■ Car Carrier ■ Container ■ General Purpose ■ Passenger ■ Ro-Ro ■ Tanker

Revenue by Vessel Type
August YTD 2016 and 2017



	Bulker	Car Carrier	Container	General Purpose	Passenger	Ro-Ro	Tanker
■ 2016	\$1,779,52	\$1,797,53	\$9,962,61	\$391,212	\$3,008,13	\$607,240	\$4,710,40
■ 2017	\$1,827,40	\$1,733,04	\$9,202,67	\$422,712	\$3,182,56	\$618,218	\$4,566,67

Changes in Revenue Per Assignment Puget Sound District 2015-2017



Source of Revenue Breakdown
Jan - August for 2017, 2016

SUMMARY OF PSP																				
Earned Revenue Rpt																				
<u>Calendar Year</u>																				
	2017 1st Qtr YTD		2017 2nd Qtr		JUL-17		AUG-17		2017 YTD		2016 1st Qtr YTD		2016 2nd Qtr		Jul-16		Aug-16		2016 YTD	
--Counters & Misc Totals--																				
Seattle Assigns	417	0.5%	611	0.7%	223	236	1,487	-2.2%	415	-22.1%	607	-16.4%	261	238	1,521	-12.1%				
Ship Assigns	1,705	-3.1%	1,866	-5.8%	664	657	4,892	-4.5%	1,759	1.5%	1,981	-9.3%	694	686	5,120	-2.3%				
Pilot Boat Assigns	1,218	-2.9%	1,393	-3.3%	526	501	3,638	-1.5%	1,254	2.8%	1,440	-2.3%	497	503	3,694	1.1%				
Tonnage Surcharge/Moves	1,662	-3.3%	1,829	-6.1%	653	643	4,787	-4.9%	1,718	1.7%	1,948	-8.4%	689	681	5,036	-1.7%				
Surcharge Revenue	\$3,975,144	0.1%	\$5,045,826	-0.6%	\$2,027,024	\$1,914,728	\$12,962,722	-1.2%	\$3,970,859	9.9%	\$5,078,192	13.9%	\$2,062,503	\$2,012,001	\$13,123,555	10.5%				
--Source of Revenue Breakdown--																				
	QTD change		QTD change				Revenue	% of total Rev	YTD Change	QTD change		QTD change				Revenue	YTD Change			
LOA/Zone (*)	\$1,906,628	-3.3%	2,187,021	-3.8%	817,023	813,567	\$5,724,239	25.7%	-3.2%	\$1,971,175	2.6%	\$2,272,257	-2.4%	846,758	823,123	\$5,913,313	1.3%			
Harbor Shift (*)	241,232	-5.4%	179,973	-29.5%	51,224	50,351	522,780	2.3%	-22.3%	255,129	21.0%	255,161	-10.0%	83,279	79,623	673,192	2.0%			
Transportation (**)	242,747	-6.2%	265,285	-5.3%	90,567	87,020	685,619	3.1%	-5.5%	258,844	9.9%	279,996	-8.8%	96,653	89,893	725,387	-0.4%			
BC Surcharge (***)	77,959	5.7%	107,457	-8.9%	42,140	37,926	265,482	1.2%	0.0%	73,745	-10.3%	117,992	33.3%	37,926	35,819	265,482	5.0%			
Bridge Transit (***)	19,771	-18.2%	23,252	-15.2%	7,282	5,788	56,093	0.3%	-16.2%	24,180	16.5%	27,428	7.1%	5,782	9,544	66,934	2.6%			
Waterway (***)	158,042	-15.0%	130,986	-26.6%	44,916	47,937	381,881	1.7%	-19.9%	185,991	36.0%	178,429	-12.0%	53,390	59,166	476,976	0.2%			
Tonnage Surcharge (***)	3,975,144	0.1%	5,045,826	-0.6%	2,027,024	1,914,728	12,962,722	58.1%	-1.2%	3,970,859	9.9%	5,078,192	13.9%	2,062,503	2,012,001	13,123,555	10.5%			
Cancellations (***)	27,352	11.4%	21,649	10.6%	4,603	8,356	61,960	0.3%	20.7%	24,548	-0.2%	19,570	-28.4%	3,171	4,059	51,348	-16.8%			
Compass Adj (***)	718	-33.3%	359	-85.7%	718	718	2,513	0.0%	-30.0%	1,077	-25.0%	2,513	133.3%	0	0	3,590	25.0%			
Standby/Sail Delay (***)	69,412	-21.7%	77,466	8.2%	26,906	13,736	187,520	0.8%	-5.9%	88,610	-15.3%	71,604	-72.5%	23,308	15,681	199,203	-52.9%			
Slow Down (***)	14,522	-73.2%	39,456	-9.5%	22,194	16,988	93,160	0.4%	-40.5%	54,252	81.7%	43,611	-62.5%	22,212	36,442	156,517	-17.9%			
Salmon Bay (***)	211	0.5%	1,266	0.0%	211	1,055	2,743	0.0%	0.0%	210		1,266	-14.3%	422	844	2,742				
Lk Union/Washington (***)	164	0.0%	984		164	656	1,968	0.0%	-11.6%	164		1,078		328	656	2,226				
Sea Trials (***)	3,718	0.0%	0		5,070	507	9,295	0.0%	-38.2%	3,718	-33.3%	7,267	26.5%	0	4,056	15,041	21.9%			
Delayed Arr & Dock Delay (***)	26,852	-38.0%	36,716	34.0%	2,192	3,014	68,774	0.3%	-19.0%	43,310	143.2%	27,400	106.6%	8,768	5,480	84,958	122.4%			
Miscellaneous (***)	56		8,036			28	8,120	0.0%				0			0					
Pilot Boat (***)	423,864	-2.9%	484,416	-3.3%	183,048	174,348	1,265,676	5.7%	-1.6%	436,392	2.8%	501,120	-2.3%	172,956	175,392	1,285,860	1.1%			
Total-Source Section	\$7,188,392	-2.8%	\$8,610,148	-3.1%	\$3,325,282	\$3,176,723	\$22,300,545	100%	-3.2%	\$7,392,204	8.3%	\$8,884,884	2.9%	\$3,417,456	\$3,351,779	\$23,046,323	5.3%			
-----Revenue-----																				
\$359 diff																				
Mileage (LOA/Zone) (*)	\$2,147,860	-3.5%	2,366,994	-6.3%	868,247	863,918	\$6,247,019	28.0%	-5.2%	\$2,226,304	4.4%	2,527,418	-3.2%	930,037	902,746	\$6,586,505	1.3%			
Trans (**)	242,747	-6.2%	265,285	-5.3%	90,567	87,020	685,619	3.1%	-5.5%	258,844	9.9%	279,996	-8.8%	96,653	89,893	725,386	-0.4%			
Special (***)	4,797,785	-2.2%	5,977,868	-1.6%	2,366,827	2,225,785	15,368,266	68.9%	-2.3%	4,907,056	10.0%	6,077,470	6.4%	2,390,766	2,359,140	15,734,432	7.3%			
Total -Revenue Section	\$7,188,392	-2.8%	\$8,610,148	-3.1%	\$3,325,641	\$3,176,723	\$22,300,904	-3.2%	-3.2%	\$7,392,204	8.3%	\$8,884,884	2.9%	\$3,417,456	\$3,351,779	\$23,046,323	5.3%			
Revenue/Assignment, no Trans	\$4,074	0.5%	\$4,472	3.0%	\$4,872	\$4,703	\$4,418	1.4%		\$4,055	7%	\$4,344	14.0%	4,785	4,755	\$4,360	8.0%			
Other Stats																				
Pilot Boat Charges	\$423,864	-2.9%	484,416	-3.3%	183,048	174,348	1,265,676	-1.6%		\$436,392	2.8%	501,120	-2.3%	172,956	175,392	\$1,285,860	1.1%			
Pilot Boat Assignments	1,218	-2.9%	1,393	-3.3%	526	501	3,638	-1.5%		1,254	2.8%	1,440	-2.3%	497	503	3,694	1.1%			
Avg							348					348		\$ 348	\$ 348	348				
Tonnage Surcharge Revenue	\$3,975,144	0.1%	\$5,045,826	-0.6%	\$2,027,024	\$1,914,728	\$12,962,722	-1.2%		\$3,970,859	9.9%	\$5,078,192	13.9%	\$2,062,503	\$2,012,001	\$13,123,555	10.5%			
Tonnage Surcharge Charge # moves	1,662	-3.3%	1,829	-6.1%	653	643	4,787	-4.9%		1,718	1.7%	1,948	-8.4%	689	681	5,036	-1.7%			
Avg Tonnage Surcharge/Move	\$2,392	3.5%	\$2,759	5.8%	\$3,104	\$2,978	2,708	3.9%		\$2,311	8.1%	\$2,607	24.4%	2,993	2,954	\$2,606	12.4%			

Selected Comparatives Summary

PSP 2017	January	February	March	April	(cruise season) May	June	6 mo to date	compared to previous year	July	August		to date	
Tariff Revenue-Trans	\$2,488,326	\$2,183,031	\$2,273,861	\$2,315,825	\$2,968,949	\$3,060,089	\$15,290,508	-2.8%	\$3,235,074	\$3,089,703	-5.3%	\$21,615,285	-3.2%
RPA-Revenue per Assign	\$4,106	\$4,127	\$3,989	\$4,099	\$4,471	\$4,811	\$4,284	1.8%	\$4,872	\$4,703	-1.0%	\$4,419	1.4%
# of licensed pilots w/o Pres	51	51	51	51	51	51	51		51	51		51	
Average Assgn/pilot on rotation	11.88	10.37	11.18	11.08	13.02	12.72	11.71		13.02	13.14			
# pilots with < 6 jobs (+1=Pres)	2 + 1	5 + 1	3 + 1	5 + 1	7+1	2 + 1			1 + 1	2 + 1			
Assignments	606	529	570	565	664	636	3570	-4.5%	664	657	-4.4%	4891	-4.5%
Assignment change	1	-18	-37	-19	-8	-89	-170		-30	-30		-230	
Moves	594	520	548	550	654	625	3491	-4.8%	653	643	-5.6%	4787	-4.9%
Moves change	5	-18	-43	-23	-11	-85	-175		-36	-38		-249	
Cancellations	12	9	22	15	10	11	79	6.8%	11	14		104	22.4%
Tonnage Revenue	\$1,456,699	\$1,256,480	\$1,261,965	\$1,305,187	\$1,808,684	\$1,931,955	\$9,020,970	-0.3%	\$2,027,024	\$1,914,728	-4.8%	\$12,962,722	
Tonnage Revenue per Move	\$2,452	\$2,416	\$2,303	\$2,373	\$2,766	\$3,091	\$2,584	4.7%	\$3,104	\$2,978	0.8%	\$2,708	
Gross Tonnage Moved	31,303,842	27,797,983	27,446,553	27,831,924	33,410,880	34,205,855	\$181,997,037	-3.6%	36,250,722	34,174,789	-8.0%	252,422,548	-4.73%
PSP 2016	January	February	March	April	(cruise season) May	June	6 mo to date	to previous year	July	August		Year to Date to date	
Tariff Revenue-Trans	\$2,443,846	\$2,269,624	\$2,419,887	\$2,350,195	\$3,039,515	\$3,215,179	\$15,738,246	5.5%	\$3,320,803	\$3,261,886	-0.9%	\$22,320,935	5.4%
RPA-Revenue per Assign	\$4,039	\$4,149	\$3,987	\$4,024	\$4,523	\$4,435	\$4,208	10.5%	\$4,785	\$4,748	0.0%	\$4,359	8.0%
# of licensed pilots w/o Pres	51	51	50	51	51	51	50.80		51	51			
Average Assgn/pilot	12.26	10.73	12.14	11.45	13.18	14.22	11.95		13.61	13.47			
# pilots with < 6 jobs(+1=Pres)	6 + 1	8 + 1	3 + 1	7 + 1	2 + 1	4 + 1			1 + 1	1+1			
Assignments	605	547	607	584	672	725	3740	-4.5%	694	687	-0.9%	5121	-2.3%
Assignment change	28	30	-32	-36	-102	-66	-178		62	-6		-122	
Moves	589	538	591	573	665	710	3666	-4.0%	689	681	-0.4%	5036	-1.7%
Moves change	23	37	-32	-25	-95	-61	-153	-4.8%	68	-3			
Cancellations	16	9	16	11	7	15	74		5	6		85	
Tonnage Revenue	\$1,329,440	\$1,296,111	\$1,345,308	\$1,322,435	\$1,832,625	\$1,923,132	\$9,049,051	12.1%	\$2,062,503	\$2,012,001	-0.4%	\$13,123,555	
Tonnage Revenue per Move	\$2,257	\$2,409	\$2,276	\$2,308	\$2,756	\$2,709	\$2,468.37	16.8%	\$2,993	\$2,954	0.0%	\$2,606	
Gross Tonnage Moved	29,609,106	27,830,304	29,667,076	28,676,198	35,896,326	37,105,794	\$188,784,804	5.5%	39,040,725	37,131,259	-3.7%	264,956,788	5.1%
PSP 2015	January	February	March	April	(cruise season) May	June	6 mo to date		July	August		Year to Date to date	
Tariff Revenue-Trans	\$2,202,588	\$2,024,841	\$2,365,096	\$2,153,086	\$2,959,296	\$3,210,995	\$14,915,902	-5.3%	\$2,960,243	\$3,291,439	2.23%	\$21,167,584	-3.78%
RPA-Revenue per Assign	\$3,817	\$3,917	\$3,701	\$3,473	\$3,823	\$4,059	\$3,807	-7.3%	\$4,684	\$4,750	1.05%	\$4,037	-4.86%
# of licensed pilots w/o Pres	53	53	52	52	52	52	52.40		52	52			
Average Assgn/pilot	10.89	9.75	12.29	11.92	14.88	15.51	12.54		12.39	13.59			
# pilots with < 6 jobs(+1=Pres)	7	9	4	2	1	3			4	2			
Assignments	577	517	639	620	774	791	3918	2.1%	632	693	1.2%	5243	1.14%
Assignment change	-62	-66	16	-10	103	101	82		-31	8		59	
Moves	566	501	623	598	760	771	3819	0.8%	621	684	1.0%	5124	0.02%
Moves change	-65	-71	6	-23	95	89	31		-37	7		1	
Cancellations	11	16	16	22	14	20	99		11	9		119	
Tonnage Revenue	\$1,216,397	\$1,132,850	\$1,263,220	\$1,074,585	\$1,566,491	\$1,816,296	\$8,069,839	-14.2%	\$1,793,733	\$2,019,933	-2.5%	\$11,883,505	
Tonnage Revenue per Move	\$2,149	\$2,261	\$2,028	\$1,797	\$2,061	\$2,356	\$2,113	-14.9%	\$2,888	\$2,953	-3.5%	\$2,319	
Gross Tonnage Moved	27,588,264	24,671,828	29,034,609	26,097,422	33,836,475	37,785,703	\$179,014,301	-7.9%	34,596,046	38,564,722	0.1%	252,175,069	-6.14%

2017			Jan	Feb	Mar	Apr	May	Jun	Jul	Aug	YTD Actual Assign	Average Assgn 145/12=12.1	(under) over TAL
Pilot Code	Actual Trips PSP Earned Revenue Report Detail		Actual Assign	Actual Assign	Actual Assign	Actual Assign	Actual Assign	Actual Assign	Actual Assign	Actual Assign			
5	ANA Anacker, D.S.		7	12	14	8	13	7	18	17	96	12.0	(1)
5	ANT Anthony, Michael	Lic 7/24/12	15	6	15	9	15	13	5	12	90	11.3	(7)
5	ARN Arnold, J. E.		16	11	8	13	16	19	14	8	105	13.1	8
5	BLA Blake, M.E.		16	14	11	15	5	0	Retired 7/6		61	8.7	1
5	BOU Bouma, Blair		11	4	11	8	16	12	10	13	85	10.6	(12)
4	BRO Brouillard, Dan	Lic 7/31/13	10	8	12	15	15	10	6	17	93	11.6	(4)
5	BRU Brusco, David		14	7	17	2	15	18	12	11	96	12.0	(1)
5	BUJ Bujacich, J.P.		3	16	13	15	2	13	16	16	94	11.8	(3)
4	CAW Carley, W. Bud	Lic 1/10/13	6	8	12	12	16	6	10	4	74	9.3	(23)
5	CAI Carlson, I.J.		11	10	12	7	10	10	7	11	78	9.8	(19)
1	CAJ Carstensen, J	Lic. 9/30/15	13	9	12	10	10	11	14	12	91	11.4	(6)
5	COE Coe, F.A.		11	10	12	9	10	11	15	9	87	10.9	(10)
2	COL Coleman, S	Lic. 8/27/14	13	7	10	11	12	14	8	10	85	10.6	(12)
3	COR Coryell, T.D.	Lic. 12/13/13	10	13	14	3	19	11	14	17	101	12.6	4
5	EME Emerson, L. P.		10	13	15	17	23	17	14	13	122	15.3	25
4	ENF Engstrom, F. E.	Lic 11/15/12	8	13	12	12	10	14	16	11	96	12.0	(1)
5	ENV Engstrom, V.		12	9	12	14	12	11	7	0	77	9.6	(20)
2	GAL Galvin, Jamie	Lic 11/11/14	13	14	11	12	11	11	9	14	95	11.9	(2)
5	GIE Giese, P. A.		13	16	3	14	14	16	15	6	97	12.1	0
5	GRD Grobschmit, D.W.		7	11	12	6	13	16	14	14	93	11.6	(4)
5	HAI Hannuksela, J		14	10	17	2	15	15	17	19	109	13.6	12
5	HAR Harris, J. B.		14	5	10	8	13	11	12	8	81	10.1	(16)
	HEJ Henderson, J. David	Lic 7/6/17							10	12	22	11	(2)
5	HEN Henshaw, B. F.		8	0	13	12	16	10	17	23	99	12.4	2
5	HUR Hurt, G. D.		8	4	6	11	10	16	15	12	82	10.3	(15)
2	JEN Jensen, Brian	Lic. 12/22/14	9	12	10	11	17	8	8	14	89	11.1	(8)
5	KAL Kalvoy, J.E.		3	9	14	12	20	5	12	10	85	10.6	(12)
5	KEA Kearns, J.		10	13	10	10	12	10	17	16	98	12.3	1
1	KEN Kelleher, N.T.	Lic. 4/14/16	8	9	6	12	12	13	12	12	84	10.5	(13)
5	KEP Kelly, P.S.		14	15	12	5	16	15	17	17	111	13.9	14
5	KLA Klapperich, E.C.		8	10	10	11	10	7	15	11	82	10.3	(15)
3	LIC Lichty, E.C.	Lic. 5/1/14	14	8	12	15	4	15	15	15	98	12.3	1
2	LOB Lowe, Brad	Lic. 9/23/15	11	11	15	12	8	15	13	15	100	12.5	3
4	LOW Lowery, W.W.	Lic. 2/11/13	16	16	14	16	3	17	10	11	103	12.9	6
5	MAR Marmol, E.		11	7	9	9	11	8	11	12	78	9.8	(19)
5	MAY Mayer, D. W.		11	14	4	6	14	10	12	12	83	10.4	(14)
5	MOT Moreno, S.		13	9	13	19	10	11	7	17	99	12.4	2
5	MOR Mork, S. E.		14	10	23	16	23	11	Retired 7/11/17		97	16.2	37
5	NEW Newman, A. J.		14	11	8	14	4	11	14	12	88	11.0	(9)
	ROU Rounds, Chris	Lic 7/11/17							10	12	22	11	(2)
5	SAN Sanders, D. A.		15	13	11	9	3	15	23	16	105	13.1	8
5	SCO Scoggins, J		13	9	10	18	14	17	8	19	108	13.5	11
5	SCR Scragg, J.		11	6	8	4	11	15	14	16	85	10.6	(12)
5	SEM Semler, J. R.		14	16	4	15	11	16	14	7	97	12.1	0
5	SES Semler, S.		16	10	10	12	18	16	12	7	101	12.6	4
5	SEY Seymour, L.		9	17	9	17	18	18	11	17	116	14.5	19
5	SHA Shaffer, D. L.		14	10	6	12	20	16	15	9	102	12.8	5
5	SHJ Shaffer, J. A.		23	14	6	13	22	14	19	11	122	15.3	25
5	SHU Shuler, M.		12	3	9	13	15	12	17	17	98	12.3	1
5	SLI Sliker, W.J.		11	10	12	6	15	11	14	12	91	11.4	(6)
5	SOR Soriano, D. B.		13	12	7	11	22	10	15	15	105	13.1	8
5	THG Thoreson, George		19	10	14	9	16	14	14	17	113	14.1	16
5	VON vonBrandenfels, E. M.	president	1	0	4	0	0	2	1	0	8		President
5	WIG Wildes, G. R.		16	15	16	13	4	12	19	19	114	14.3	17
Total Assignments/ Month			606	529	570	565	664	636	664	657	4891		
Number of licensed PS pilots			52	52	52	52	52	52	52	52	52		
Pilots on rotation			51	51	51	51	51	50	51	50	51	12.1*12=51=	
Average Assgn/pilot on rotation			11.88	10.37	11.18	11.08	13.02	12.72	13.02	13.14	11.99	=7405 assgns/yr	
PSP LOA Report (MOVES)			594	520	548	550	654	625	653	643	4787		
Cancellations			12	9	22	15	10	11	11	14	104		
# of Pilots with < 6 jobs(+1=Pres)			2 + 1	5 + 1	3 + 1	5 + 1	7 + 1	2 + 1	1 + 1	2 + 1			
Pilots w/>5 trips & their avg # of trips			49P; 12.2	46P; 11.15	58P; 11.6	46P; 11.9	44P; 14.5	49P; 12.8	50P; 13.2	49P; 13.3			
Medical circumstances:													
2016													
PSP Assignments from Earned Revenue Report			605	547	607	584	672	725	694	687	7662		
PSP LOA Report			589	538	591	573	665	710	689	681	7525		
Cancellations			16	9	16	11	7	15			137		
Number of Pilots			51	51	51	51	51	51			51		

2017		Moves YTD	Moves/ Month	SHIP MOVES BY ZONE/DISTANCE						SHIP MOVES BY TYPE										ATB Memo	Totals
				IntraHbr	≤30 mi	≤50 mi	≤75 mi	≤100mi	101+ mi	Bulker	Car Carrier	Container	General	Naval	Other	Passngr	Reefer	Ro-Ro	Tanker		
				1	2	3	4	5	6												
Jan		594	111	114	53	150	166	0	110	43	220	11	5	4	1	0	17	183	47	594	
Feb	1,114	520	80	101	52	144	143		93	36	209	10	0	6	1	0	17	148	46	520	
Mar	1,662	548	95	90	51	143	169	0	107	44	215	18	3	3	0	0	21	137	40	548	
Apr	2,212	550	97	75	49	166	163		99	45	203	1	0	5	4	2	18	173	53	550	
May	2,866	654	75	104	61	251	163		95	35	184	27	1	8	72	0	18	214	77	654	
June	3,491	625	76	83	61	255	150		60	36	186	4	2	19	89	5	23	201	64	625	
July	4,149	658	74	98	57	257	172	0	87	42	195	18	1	3	101	0	18	193	67	658	
Aug	4,792	643	70	89	52	249	183		57	36	214	16	0	13	85	0	32	191	80	644	
		4792	678	754	436	1615	1309	0	708	317	1626	105	12	61	353	7	164	1440	474	4793	
@Aug2017/2016	change	(244)	(173)	37	(32)	18	(94)	0	(13)	(29)	(175)	17	7	(1)	18	(3)	(6)	(58)	(97)	(243)	

2016		Moves YTD	Moves/ Month	SHIP MOVES BY ZONE/DISTANCE						SHIP MOVES BY TYPE										ATB Memo	Totals
				IntraHbr	≤30 mi	≤50 mi	≤75 mi	≤100mi	101+ mi	Bulker	Car Carrier	Container	General	Naval	Other	Passngr	Reefer	Ro-Ro	Tanker		
				1	2	3	4	5	6												
Jan		589	121	84	61	157	166	0	88	39	232	14	4	1	1	0	19	191	76	589	
Feb	1,127	538	91	102	43	139	163	0	90	45	212	7	0	0	2	0	18	164	54	538	
Mar	1,718	591	102	92	58	150	189	0	97	52	236	8	0	1	0	0	20	177	67	591	
Apr	2,291	573	107	79	64	155	168	0	70	41	216	8	0	11	2	0	25	200	64	573	
May	2,956	665	105	97	63	224	176		84	41	232	9	0	20	64	0	18	197	71	665	
June	3,666	710	121	93	65	254	177	0	101	42	221	17	0	11	84	7	29	198	87	710	
July	4,355	689	98	82	58	271	180	0	86	47	223	8	0	3	97	3	20	202	85	689	
Aug	5,036	681	106	88	56	247	184		105	39	229	17	1	15	85	0	21	169	67	681	
			851	717	468	1597	1403	0	721	346	1801	88	5	62	335	10	170	1498	571	5036	
Sept	5,686	650	115	80	68	214	173		105	40	220	9	0	12	71	0	19	174		650	
Oct	6,292	606	94	113	63	173	163		100	38	224	8	0	4	12	2	23	195		606	
Nov	6,953	661	108	130	73	175	175	0	127	43	213	10	2	1	0	5	20	222		643	
Dec	7,563	610	97	114	65	178	156		110	41	214	11	4	0	0	3	20	187	1142	1732	
		2956	526	454	289	825	862	0	429	218	1128	46	4	33	69	0	100	929		2956	
@Aug2016/2015	change	(88)	(112)	49	38	(53)	6	(10)	42	(6)	(27)	9	4	(11)	(90)	3	1	(19)	(14)	(88)	

2015		Moves YTD	Moves/ Month	SHIP MOVES BY ZONE/DISTANCE						SHIP MOVES BY TYPE										ATB Memo	Totals
				IntraHbr	≤30 mi	≤50 mi	≤75 mi	≤100mi	101+ mi	Bulker	Car Carrier	Container	General	Naval	Other	Passngr	Reefer	Ro-Ro	Tanker		
				1	2	3	4	5	6												
Jan		566	88	93	51	189	144	1	102	35	219	23		4	1		18	164	63	566	
Feb 497	1,067	501	67	88	40	154	144	4	70	43	209	5		7	1		21	145	51	501	
Mar 621	1,690	623	139	85	50	168	179	0	120	45	234	14	1	38			23	148	53	623	
Apr	2,288	598	127	60	59	174	178	0	78	43	224	16	1	37			24	175	68	598	
May	3,048	760	178	92	50	238	197	5	76	54	232	23	1	103	62	2	20	187	83	760	
June	3,819	771	152	108	65	249	197	0	70	67	232	6	3	71	86	2	21	213	108	771	
July	4,440	621	95	70	56	231	169	0	39	50	225	19	4	6	86		19	173	73	621	
Aug	5,124	684	117	72	59	247	189	0	68	47	241	2		11	90		19	206	86	684	
			963	668	430	1650	1397	10	623	384	1816	108	10	277	326	4	165	1411	585	5124	
@Aug2015/2014	change	0	155	(56)	1	(39)	(77)	10	(72)	28	(89)	(18)	0	249	11	2	(8)	(103)		0	

2014		Moves YTD	Moves/ Month	SHIP MOVES BY ZONE/DISTANCE						SHIP MOVES BY TYPE										ATB Memo	Totals
				IntraHbr	≤30 mi	≤50 mi	≤75 mi	≤100mi	101+ mi	Bulker	Car Carrier	Container	General	Naval	Other	Passngr	Reefer	Ro-Ro	Tanker		
				1	2	3	4	5	6												
Jan		631	113	96	56	168	198	0	93	51	252	16		2	1		21	195		631	
Feb	1,203	572	94	99	52	155	172	0	113	39	212	5	2	3	1		20	177		572	
Mar	1,820	617	106	99	47	178	187	0	92	47	239	16		2			23	198		617	
Apr	2,441	621	109	83	48	194	187	0	112	48	242	16		2			22	179		621	
May	3,106	665	93	94	48	247	183	0	67	43	257	19	2	8	61		23	185		665	
June	3,788	682	99	82	61	260	180	0	73	46	227	25		2	85	2	20	202		682	
July	4,446	658	93	81	52	253	179	0	79	41	240	10	3	1	82		25	177		658	
Aug	5,124	678	101	90	65	234	188	0	66	41	236	19	3	8	85		19	201		678	
			808	724	429	1689	1474	0	695	356	1905	126	10	28	315	2	173	1514		5124	
@Aug2014/2013	change	15	91	(40)	30	(110)	47	(2)	134	13	(32)	15	1	(42)	(3)	0	(3)	(68)		15	

Vessel Moves by Zone and LOA

AUGUST 2017									AUGUST 2016									AUGUST 2015								
YTD	Totals	LOA	IntraHbr	≤ 30 mi	≤ 50 mi	≤ 75 mi	≤ 100mi	101+ mi	YTD	Totals	LOA	IntraHbr	≤ 30 mi	≤ 50 mi	≤ 75 mi	≤ 100mi	101+ mi	YTD	Totals	LOA	IntraHbr	≤ 30 mi	≤ 50 mi	≤ 75 mi	≤ 100mi	101+ mi
			1	2	3	4	5	6				1	2	3	4	5	6				1	2	3	4	5	6
218	30	Up to 500	3	7	8	10	2		195	39	Up to 500	11	8	11	7	2		348	19	Up to 500	5	4	4	6	0	0
511	65	500-599	11	10	1	29	14		569	73	500-599	23	8	3	27	12		633	88	500-599	25	10	14	26	13	0
1239	163	600-699	11	41	29	34	48		1330	153	600-699	12	29	31	35	46		1230	154	600-699	15	24	28	34	53	0
643	63	700-799	6	5	3	19	30		646	97	700-799	7	19	3	24	44		650	79	700-799	7	9	5	30	28	0
587	73	800-899	4	20	10	19	20		605	65	800-899	7	9	5	25	19		545	69	800-899	13	7	7	17	25	0
1108	206	900-999	35	6	1	95	69		1005	155	900-999	18	6	3	89	39		1169	182	900-999	22	8	1	100	51	0
486	43	1000--				43			686	99	1000--	28	9		40	22		543	93	1000--	30	10	0	34	19	0
	643		70	89	52	249	183	0	moves	681		106	88	56	247	184	0		684		117	72	59	247	189	0
YTD totals		4792	678	754	436	1615	1309	0	YTD totals		5036	851	717	468	1597	1403	0	YTD totals		5118	963	668	430	1650	1397	10
YTD Averages		599.0	84.8	94.3	54.5	201.9	163.6	0.0	YTD Averages		629.5	106.4	89.6	58.5	199.6	175.4	0.0	YTD Averages		639.8	120.4	83.5	53.8	206.3	174.6	1.3

JULY 2017									JULY 2016									JULY 2015								
YTD	Totals	LOA	IntraHbr	≤ 30 mi	≤ 50 mi	≤ 75 mi	≤ 100mi	101+ mi	YTD	Totals	LOA	IntraHbr	≤ 30 mi	≤ 50 mi	≤ 75 mi	≤ 100mi	101+ mi	YTD	Totals	LOA	IntraHbr	≤ 30 mi	≤ 50 mi	≤ 75 mi	≤ 100mi	101+ mi
			1	2	3	4	5	6				1	2	3	4	5	6				1	2	3	4	5	6
188	22	Up to 500	0	6	8	8	0	0	156	28	Up to 500	2	4	11	4	7		329	22	Up to 500	4	3	2	13	0	
446	86	500-599	14	23	8	29	12	0	496	102	500-599	8	9	3	21	61		545	68	500-599	19	4	12	21	12	
1076	142	600-699	9	31	28	30	44	0	1177	148	600-699	15	35	28	40	30		1076	145	600-699	16	29	31	30	39	
580	82	700-799	12	8	2	23	37	0	549	90	700-799	14	7	5	44	20		571	64	700-799	3	4	3	27	27	
514	76	800-899	7	23	9	18	19	0	540	104	800-899	12	12	9	30	41		476	63	800-899	9	6	6	13	29	
902	206	900-999	32	7	2	105	60	0	850	142	900-999	22	8	2	89	21		987	176	900-999	19	14	2	95	46	
443	44	1000--	0	0	0	44	0	0	587	75	1000--	25	7		43			450	83	1000--	25	10	0	32	16	
	658		74	98	57	257	172	0	moves	689		98	82	58	271	180	0		621		95	70	56	231	169	0
YTD totals		4149	608	665	384	1366	1126	0	YTD totals		4355	745	629	412	1350	1219	0	YTD totals		4434	846	596	371	1403	1208	10
YTD Averages		592.7	86.9	95.0	54.9	195.1	160.9	0.0	YTD Averages		622.1	106.4	89.9	58.9	192.9	174.1	0.0	YTD Averages		633.4	120.9	85.1	53.0	200.4	172.6	1.4

Vessel Moves by Zone and LOA

2017 JUNE 2017									2017 JUNE 2016									2017 JUNE 2015								
YTD	Totals	LOA	IntraHbr	≤ 30 mi	≤ 50 mi	≤ 75 mi	≤ 100mi	101+ mi	YTD	Totals	LOA	IntraHbr	≤ 30 mi	≤ 50 mi	≤ 75 mi	≤ 100mi	101+ mi	YTD	Totals	LOA	IntraHbr	≤ 30 mi	≤ 50 mi	≤ 75 mi	≤ 100mi	101+ mi
166	45	Up to 500	6	9	8	20	2		128	39	Up to 500	7	7	11	13	1		307	73	Up to 500	36	10	6	21	0	
360	61	500-599	12	10	5	23	11		394	67	500-599	20	11	4	25	7		477	108	500-599	23	25	12	35	13	
934	145	600-699	15	29	32	35	34		1029	194	600-699	25	43	37	39	50		931	184	600-699	25	33	32	31	63	
498	62	700-799	6	9	5	19	23		459	87	700-799	11	4	3	31	38		507	93	700-799	11	13	6	28	35	
438	72	800-899	12	12	8	16	24		436	77	800-899	9	12	8	26	22		413	60	800-899	11	5	7	13	24	
696	191	900-999	24	14	3	94	56		708	152	900-999	24	7	2	78	41		811	166	900-999	18	13	2	88	45	
399	49	1000--	1			48			512	94	1000--	25	9		42	18		367	87	1000--	28	9		33	17	
	625		76	83	61	255	150	0	moves	710		121	93	65	254	177	0		771		152	108	65	249	197	0
YTD totals	3491		534	567	327	1109	954	0	YTD totals	3666	647	547	354	1079	1039	0	YTD totals	3813	751	526	315	1172	1039	10		
YTD Averages	581.8		89.0	94.5	54.5	184.8	159.0	0.0	YTD Averages	611.0	107.8	91.2	59.0	179.8	173.2	0.0	YTD Averages	635.5	125.2	87.7	52.5	195.3	173.2	1.7		
2017 MAY 2017									2017 MAY 2016									2017 MAY 2015								
YTD	Totals	LOA	IntraHbr	≤ 30 mi	≤ 50 mi	≤ 75 mi	≤ 100mi	101+ mi	YTD	Totals	LOA	IntraHbr	≤ 30 mi	≤ 50 mi	≤ 75 mi	≤ 100mi	101+ mi	YTD	Totals	LOA	IntraHbr	≤ 30 mi	≤ 50 mi	≤ 75 mi	≤ 100mi	101+ mi
121	32	Up to 500	3	7	9	10	3		89	26	Up to 500	3	5	6	11	1	0	234	117	Up to 500	69	14	3	31	0	0
299	68	500-599	8	18	4	25	13		327	74	500-599	20	15	4	26	9	0	369	91	500-599	27	15	3	28	16	2
789	169	600-699	16	43	36	38	36		835	175	600-699	18	41	37	34	45	0	747	177	600-699	22	38	32	33	49	3
436	92	700-799	15	7	4	29	37		372	69	700-799	7	9	5	18	30	0	414	73	700-799	8	9	1	19	36	0
366	79	800-899	12	16	8	21	22		359	83	800-899	9	12	8	28	26	0	353	77	800-899	8	8	8	19	34	0
505	177	900-999	20	12		93	52		556	142	900-999	18	6	3	68	47	0	645	154	900-999	22	4	3	80	45	0
350	37	1000--	1	1		35			418	96	1000--	30	9	0	39	18	0	280	71	1000--	22	4	0	28	17	0
	654		75	104	61	251	163	0	moves	665		105	97	63	224	176	0		760		178	92	50	238	197	5
YTD totals	2866		458	484	266	854	804	0	YTD totals	2956	526	454	289	825	862	0	YTD totals	3042	599	418	250	923	842	10		
YTD Averages	573.2		91.6	96.8	53.2	170.8	160.8	0.0	YTD Averages	591.2	105.2	90.8	57.8	165.0	172.4	0.0	YTD Averages	608.4	119.8	83.6	50.0	184.6	168.4	2.0		
2017 APRIL 2017									2017 APRIL 2016									2017 APRIL 2015								
YTD	Totals	LOA	IntraHbr	≤ 30 mi	≤ 50 mi	≤ 75 mi	≤ 100mi	101+ mi	YTD	Totals	LOA	IntraHbr	≤ 30 mi	≤ 50 mi	≤ 75 mi	≤ 100mi	101+ mi	YTD	Totals	LOA	IntraHbr	≤ 30 mi	≤ 50 mi	≤ 75 mi	≤ 100mi	101+ mi
89	28	Up to 500	1	6	10	11	0		63	28	Up to 500	11	3	8	6	0	0	117	39	Up to 500	20	6	3	10	0	0
231	52	500-599	17	6	1	18	10		253	55	500-599	19	6	3	17	10	0	278	99	500-599	29	15	14	30	11	0
620	160	600-699	18	33	29	38	42		660	168	600-699	17	35	44	34	38	0	570	157	600-699	19	26	31	34	47	0
344	82	700-799	10	10	3	26	33		303	69	700-799	6	12	1	18	32	0	341	75	700-799	10	4	4	19	38	0
287	68	800-899	10	8	6	22	22		276	72	800-899	11	7	8	22	24	0	276	69	800-899	9	7	7	20	26	0
328	91	900-999	19	5		28	39		414	104	900-999	17	8	0	33	46	0	491	107	900-999	20	2	0	47	38	0
313	69	1000--	22	7		23	17		322	77	1000--	26	8	0	25	18	0	209	52	1000--	20	0	0	14	18	0
-23	550		97	75	49	166	163	0	-25	573		107	79	64	155	168	0	-23	598		127	60	59	174	178	0
YTD totals	2212		383	380	205	603	641	0	YTD totals	2291	421	357	226	601	686	0	YTD totals	2282	421	326	200	685	645	5		
YTD Averages	553.0		95.8	95.0	51.3	150.8	160.3	0.0	YTD Averages	572.8	105.3	89.3	56.5	150.3	171.5	0.0	YTD Averages	570.5	105.3	81.5	50.0	171.3	161.3	1.3		

Vessel Moves by Zone and LOA

2017 MARCH 2017									2016 MARCH 2016									2015 MARCH 2015											
YTD	Totals	LOA	IntraHbr						101+ mi	YTD	Totals	LOA	IntraHbr						101+ mi	YTD	Totals	LOA	IntraHbr						101+ mi
			1	2	3	4	5	6					1	2	3	4	5	6					1	2	3	4	5	6	
61	27	Up to 500	0	8	10	9	0		35	15	Up to 500	1	4	8	2	0	0		78	51	Up to 500	27	6	8	10	0	0		
179	54	500-599	12	8	4	18	12		198	65	500-599	15	11	2	28	9	0		179	68	500-599	21	6	10	19	12	0		
460	150	600-699	19	33	28	28	42		492	176	600-699	20	38	35	35	48	0		413	149	600-699	23	33	20	32	41	0		
262	88	700-799	10	20	3	21	34		234	71	700-799	7	13	1	14	36	0		266	89	700-799	19	3	3	19	45	0		
219	61	800-899	11	7	5	17	21		204	78	800-899	9	11	10	18	30	0		207	75	800-899	7	8	5	22	33	0		
237	83	900-999	16	5	1	25	36		310	106	900-999	21	6	2	29	48	0		384	130	900-999	23	24	4	44	35	0		
244	85	1000--	27	9		25	24		245	80	1000--	29	9	0	24	18	0		157	59	1000--	19	5		22	13	0		
moves	548		95	90	51	143	169	0	moves	591		102	92	58	150	189	0			621		139	85	50	168	179	0		
2017 YTD totals	1662		286	305	156	437	478	0	2016 YTD totals	1718		314	278	162	446	518	0		2015 YTD totals	1684		294	266	141	511	467	5		
YTD Averages	554.0		95.3	101.7	52.0	145.7	159.3	0.0	YTD Averages	572.7		104.7	92.7	54.0	148.7	172.7	0.0		YTD Averages	561.3		98.0	88.7	47.0	170.3	155.7	1.7		

2017 FEBRUARY 2017									2016 FEBRUARY 2016									2015 FEBRUARY 2015											
YTD	Totals	LOA	IntraHbr						101+ mi	YTD	Totals	LOA	IntraHbr						101+ mi	YTD	Totals	LOA	IntraHbr						101+ mi
			1	2	3	4	5	6					1	2	3	4	5	6					1	2	3	4	5	6	
34	22	Up to 500	0	6	5	8	3		20	6	Up to 500	2	0	4	0	0		27	10	Up to 500	4		1	5					
125	69	500-599	3	11	4	13	38		133	65	500-599	18	20	3	15	9		111	49	500-599	10	10	12	12	5				
310	140	600-699	12	42	25	30	31		316	153	600-699	14	39	28	30	42		264	121	600-699	7	24	15	36	38	1			
174	79	700-799	9	22	5	25	18		163	75	700-799	5	17	2	20	31		177	88	700-799	16	10	4	19	39				
158	80	800-899	12	5	12	17	34		126	62	800-899	7	13	5	15	22		132	66	800-899	1	15	4	15	31				
154	65	900-999	15	7	0	24	19		204	101	900-999	21	3	1	31	45		254	124	900-999	20	22	4	52	24	2			
159	65	1000--	29	8	1	27			165	76	1000--	24	10		28	14		98	39	1000--	9	7		15	7	1			
moves	520		80	101	52	144	143	0	moves	538		91	102	43	139	163	0			497		67	88	40	154	144	4		
YTD totals	1114		191	215	105	294	309	0	YTD totals	1127		212	186	104	296	329	0		YTD totals	1063		155	181	91	343	288	5		
YTD Averages	557.0		95.5	107.5	52.5	147.0	154.5	0.0	YTD Averages	563.5		106.0	93.0	52.0	148.0	164.5	0.0		YTD Averages	531.5		77.5	90.5	45.5	171.5	144.0	2.5		

2017 JANUARY 2017									2016 JAN 2016 2016									2015 JAN 2015 2015											
YTD	Totals	LOA	IntraHbr						101+ mi	YTD	Totals	LOA	IntraHbr						101+ mi	YTD	Totals	LOA	IntraHbr						101+ mi
			1	2	3	4	5	6					1	2	3	4	5	6					1	2	3	4	5	6	
	12	Up to 500	1	4	7					14	Up to 500	4	3	1	6					17	Up to 500	3	1	4	9				
	56	500-599	25	7	2	16	6			68	500-599	14	12	11	23	8				62	500-599	12	15	8	21	6			
	170	600-699	13	51	32	34	40			163	600-699	20	35	34	31	43				143	600-699	13	22	26	39	43			
	95	700-799	13	19	3	22	38			88	700-799	17	9	4	26	32				89	700-799	17	8	2	24	38			
	78	800-899	13	13	9	23	20			64	800-899	17	7	9	13	18				66	800-899	5	16	10	13	22			
	89	900-999	15	8		28	38			103	900-999	20	7	2	28	46				130	900-999	20	22	1	61	26			
	94	1000--	31	12		27	24			89	1000--	29	11		30	19				59	1000--	18	9		22	9	1		
	594		111	114	53	150	166	0	moves	589		121	84	61	157	166	0			566		88	93	51	189	144	1		

TONNAGE, NUMBER OF MOVES -- BY VESSEL TYPE

2017		Bulker	#	Car Carrier	#	Container	#	General	#	Naval	#	Other	#	Passenger	#	Reefer	#	Ro-Ro	#	Tanker	#	ATB & % of Month			Total Tonnage		#
January		3,598,299	110	2,601,920	43	16,040,517	220	25,203	11	227,040	5	54,307	4	5,841	1	-	0	676,105	17	8,074,610	183	47	26%		31,303,842	594	
February		3,398,733	93	2,168,144	36	14,860,771	209	16,208	10			41,730	6	5,841	1			531,502	17	6,202,672	148	46	31%		27,225,601	520	
March		3,542,415	107	2,522,814	44	14,905,690	215	35,875	18	180,000	3	17,979	3	-	-	-		700,643	21	5,541,137	137	40	29%		27,446,553	548	
April		3,130,116	99	2,707,280	45	14,368,420	203	27,790	1	-		59,529	5	337,156	4	11,982	2	619,009	18	6,570,642	173	53	31%		27,831,924	550	
May	cruise	3,212,190	95	2,132,667	35	11,876,049	184	35,875	27	45,408	1	59,891	8	6,519,964	72	-	0	619,009	18	8,909,827	214	77	36%		33,410,880	654	
June	ship	1,805,769	60	2,127,447	36	12,052,228	186	28,338	4	9,540	2	117,802	19	8,771,132	89	32,301	5	813,532	23	8,447,766	201	64	32%		34,205,855	625	
July	season	2,810,633	87	2,463,698	42	12,856,242	195	26,098	18	-	1	3,803	3	9,293,308	101	-	#	619,009	18	8,177,932	193	67	35%		36,250,723	658	
August	in	1,780,680	57	1,991,935	36	13,833,227	214	35,891	16	-	#	16,788	13	8,047,463	85	-	#	1,286,668	32	7,182,137	191	80	42%		34,174,789	644	
		23,278,835	708	18,715,905	317	110,793,144	1,626	231,278	##	461,988	12	371,829	61	32,980,705	353	44,283	7	5,865,477	164	59,106,723	1,440	474	33%		251,850,167	4,793	

2016		Bulker	#	Car Carrier	#	Container	#	General	#	Naval	#	Other	#	Passenger	#	Reefer	#	Ro-Ro	#	Tanker	#	ATB & % of Month			Total Tonnage		#
January		2,919,918	89	2,194,663	40	16,169,580	232	338,644	14	68,065	4	17,845	1	5,841	1	-	-	577,341	19	7,399,311	191	76	40%		29,691,208	591	
February		2,896,362	90	2,552,002	44	14,781,234	212	162,009	7			-	-	11,682	2	-	-	711,930	18	6,703,933	164	54	33%		27,819,152	537	
March		2,862,643	96	2,906,891	52	16,038,829	236	201,028	8			17,845	1	-	-	-	-	701,124	20	7,077,922	177	67	38%		29,806,282	590	
April		1,924,414	70	2,281,522	41	15,156,547	216	246,272	8			52,792	11	172,546	2	-	-	810,206	25	8,242,214	200	64	32%		28,886,513	573	
May	cruise	2,329,137	84	2,358,483	41	162,716,478	232	189,699	9			369,555	20	6,114,916	64	-	-	678,044	18	7,749,381	197	71	36%		182,505,693	665	
June	ship	3,069,125	101	2,460,911	42	15,342,801	221	408,293	17			49,858	11	7,783,710	84	52,959	7	1,289,103	29	7,009,062	198	87	44%		37,465,822	710	
July	season	2,927,898	86	2,763,626	48	15,377,917	223	211,788	8			7,941	3	9,221,853	97	23,229	3	706,185	20	7,983,768	202	85	42%		39,224,205	690	
August	in	3,324,529	105	2,251,575	39	16,156,933	229	399,474	17	1,475	1	21,131	15	7,931,185	85	-	-	648,961	21	6,767,695	169	67	40%		37,502,958	681	
		22,254,026	721	19,769,673	347	271,740,319	1,801	2,157,207	88	69,540	5	119,758	62	31,241,733	335	76,188	10	6,122,894	170	58,933,286	1,498	571	38%		412,901,833	5,037	

2015		Bulker	#	Car Carrier	#	Container	#	General	#	Naval	#	Other	#	Passenger	#	Reefer	#	Ro-Ro	#	Tanker	#	ATB			Total Tonnage		#
January		3,331,935	102	2,071,601	35	13,748,321	219	436,506	23			61,474	4	5,841	1			600,566	18	7,332,020	164	63	38%		27,588,264	566	
February		2,392,118	70	2,490,846	43	12,417,478	209	136,892	5			125,628	7	5,841	1			648,961	21	6,454,064	145	51	35%		24,671,828	501	
March		3,812,507	120	2,584,770	45	14,696,583	234	347,064	14	-	1	279,395	38					812,290	23	6,502,000	148	53	36%		29,034,609	623	
April		2,339,148	78	2,376,205	43	13,620,086	224	471,902	16	3,900	1	363,108	37					878,565	24	6,044,508	175	68	39%		26,097,422	598	
May	cruise	1,988,912	76	2,942,123	54	14,601,739	232	551,593	23	4,100	1	516,239	103	5,788,128	62	17,575	2	706,554	20	6,719,512	187	83	44%		33,836,475	760	
June	ship	1,919,864	70	3,667,192	67	15,312,749	232	125,046	6	43,758	3	532,720	71	7,545,636	86	16,427	2	757,825	21	7,864,486	213	108	51%		37,785,703	771	
July	season	1,005,311	39	2,824,705	50	14,527,089	225	412,703	19	14,366	4	13,318	6	7,686,050	86			680,675	19	7,431,829	173	73	42%		34,596,046	621	
August	in	1,669,487	68	2,718,121	47	16,683,264	241	47,860	2			20,247	11	8,259,480	90			724,461	19	8,441,802	206	86	42%		38,564,722	684	
		18,459,282	623	21,675,563	384	115,607,309	1,816	2,529,566	108	66,124	10	1,912,129	277	29,290,976	326	34,002	4	5,809,897	165	56,790,221	1,411	585	42%		252,175,069	5,124	

2014		Bulker	#	Car Carrier	#	Container	#	General	#	Naval	#	Other	#	Passenger	#	Reefer	#	Ro-Ro	#	Tanker	#	Wood Chip			Total Tonnage		#
January		3,050,105	93	2,728,105	51	16,200,977	252	409,431	15			31,570	3	5,841	1			753,337	21	8,728,129	195				31,907,495	631	
February		3,583,737	113	2,206,011	39	13,775,913	212	116,907	5	18,476	2	92,682	3	5,841	1			588,345	20	8,437,623	177				28,825,535	572	
March		2,888,985	92	2,577,958	47	15,421,032	239	411,209	16			30,737	2					930,900	23	8,365,395	198				30,626,216	617	
April		3,245,399	112	2,727,229	48	15,696,863	242	392,450	16			18,880	2					837,102	22	7,762,008	179				30,679,931	621	
May	cruise	1,882,829	67	2,413,632	43	16,837,792	257	461,196	18	58,265	2	56,515	9	5,645,741	61			720,663	23	7,941,394	185				36,018,027	665	
June	ship	2,024,841	73	2,618,459	46	14,804,286	227	505,202	24			22,611	3	7,424,969	85	7,634	2	613,164	20	8,273,650	202				36,294,816	682	
July	season	2,223,507	79	2,411,139	41	15,377,516	240	248,860	10		3	1,035	1	7,021,225	82			852,658	25	7,635,964	177				35,771,904	658	
August	in	1,817,259	66	2,280,514	41	15,753,895	236	460,276	19	107,265	3	50,401	8	8,050,822	85			697,272	19	9,326,761	201				38,544,465	678	
		20,716,662	695	19,963,047	356	123,868,274	1,905	3,005,531	123	184,006	10	304,431	31	28,154,439	315	7,634	2	5,993,441	173	66,470,924	1,514	-	-	-	268,668,389	5,124	