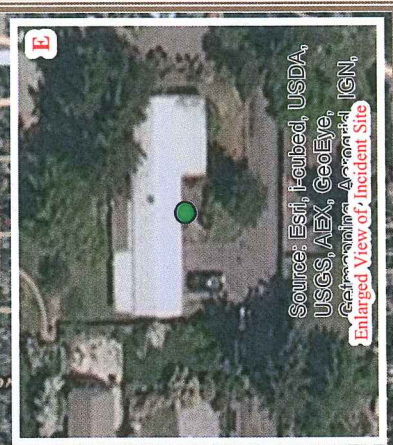
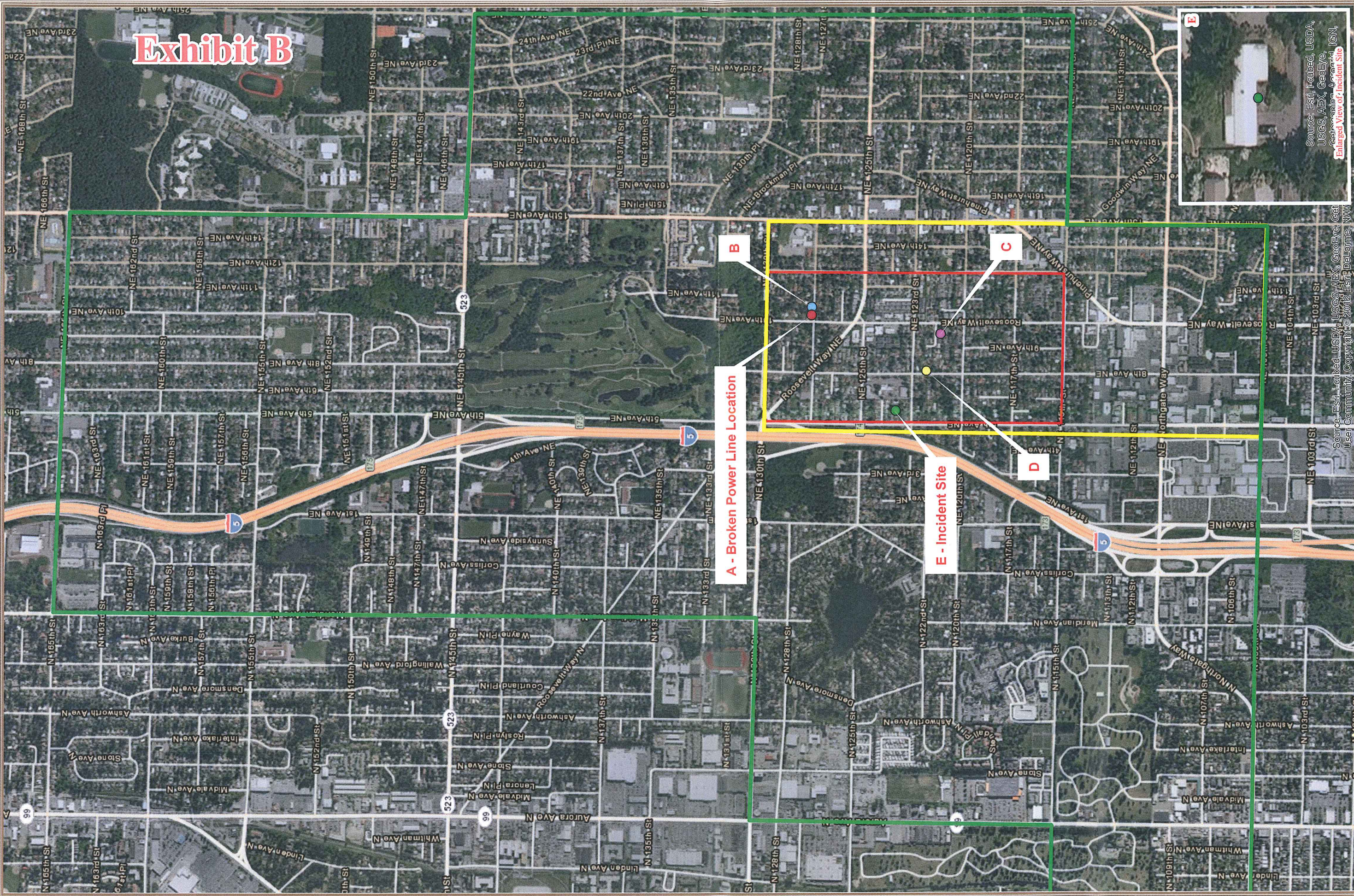


EXHIBIT B
Leak Survey Map

Exhibit B



Source: Esri, iSatellite, USDA, USGS, AEX, GeoEye, Getacomm, IGN, User Community, Copyright © 2012 Esri, DeLorme, NAV

Source: Esri, iSatellite, USDA, USGS, AEX, GeoEye, Getacomm, IGN, User Community, Copyright © 2012 Esri, DeLorme, NAV

Enlarged View of Incident Site

A - Broken Power Line Location

E - Incident Site

<p>Scale = 1:14,000 0.068, 0.25 0 0.265 0.73 0.95 Miles</p>		
<p>A ● 1010 NE 127th St (Broken Power Line Location)</p>	<p>C ● 913 NE 122nd St (Gas pipe crossing copper water pipe)</p>	<p>E ● 12312 5th Ave NE (Incident Site - Gas pipe crossing sewer pipe)</p>
<p>B ● 1016 NE 127th St (Gas pipe crossing abandoned water pipe)</p>	<p>D ● 12040 8th Ave NE (Gas pipe crossing oil vent pipe)</p>	<p>Expanded Survey</p>
<p>Initial Survey</p>	<p>2nd Expanded Survey</p>	<p>Natural Gas Incident 2011 Seattle, King County Pinhurst Neighborhood Map II of II Expanded Survey Date: 01/21/19</p>