

Source of Revenue Breakdown
2016, 2015, 2014, 2013

Exh. JR-09

	2016			2015			2014			2013
--Counters & Miscellaneous Totals--										
Seattle Assigns	2,216	-9.0%		2,434	3.5%		2,351	-1.2%		2,380
Ship Assigns	7,660	-1.7%		7,795	2.4%		7,616	-2.6%		7,819
Pilot Boat Assigns	5,523	1.4%		5,448	-3.7%		5,658	-4.9%		5,952
Tonnage Surcharge	7,525	-1.3%		7,624	1.5%		7,511	-2.4%		7,692
Surcharge Revenue	19,345,357	9.1%		17,727,784	-6.0%		18,860,634	0.9%		18,688,318
--Source of Revenue Breakdown--										
LOA/Zone	8,758,230	1.1%	Z1	8,665,312	-9.0%	Z1	9,520,065	-2.6%	Z1	9,769,908
Harbor Shift	1,007,448	0.6%	1427	1,001,329	3.3%	1225	969,147	14.5%	1146	846,142
Transportation	1,097,109	-2.0%		1,119,406	3.3%		1,083,551	-4.7%		1,136,816
BC Surcharge	389,795	3.9%		375,046	-7.3%		404,544	-20.9%		511,595
Bridge Transit	94,350	0.7%	2 pilot jobs? →	93,690	-3.5%		97,126	6.2%		91,470
Waterway	690,061	-4.3%	2 pilot jobs? →	720,708	1.2%		711,911	4.6%		680,504
Tonnage Surcharge	19,345,357	9.1%		17,727,784	-6.0%		18,860,634	0.9%		18,688,318
Cancellations	87,177	-3.4%		90,248	42.3%		63,429	-10.7%		71,061
Compass Adj	5,744	23.1%		4,667	-38.1%		7,539	5.0%		7,180
Standby	328,383	-45.6%		603,712	69.5%		356,075	-1.2%		360,286
Slow Down	197,653	-22.4%		254,564	253.0%		72,107	-10.2%		80,300
Salmon Bay	5,907	299.9%		1,477	-65.0%		4,220	122.2%		1,899
Sea Trials	16,224	-91.4%		188,435	548.3%		29,068	-79.0%		138,749
Miscellaneous	2,378	-86.2%		17,262						
Delayed Arrival &/or Lk Union	129,879	215.2%		41,208	-5.3%		43,504	25.6%		34,630
Pilot Boat	1,922,352	1.4%		1,895,556	532.1%		299,874	2.8%		291,599
Total-Source Section	34,078,047	3.9%		32,800,404	0.9%		32,522,794	-0.6%		32,710,456
-----Revenue-----										
Mileage	9,765,678	1.0%		9,666,641	-7.8%		10,489,212	-1.2%		10,616,050
Trans	1,097,109	-2.0%		1,119,406	3.3%		1,083,551	-4.7%		1,136,816
Special	23,215,260	5.5%		22,014,357	5.1%		20,950,031	0.0%		20,957,591
Total -Revenue Section	34,078,047	3.9%		32,800,404	0.9%		32,522,794	-0.6%		32,710,456
Other Stats										
Pilot Boat Charges	1,922,352	1.4%		1,895,556	532.1%		299,874	2.8%		291,599
Pilot Boat Assignments	5,523	1.4%		5,448	-3.7%		5,658	-4.9%		5,952
Tonnage Surcharge Revenue	19,345,357	9.1%		17,727,784	-6.0%		18,860,634	0.9%		18,688,318
Tonnage Surcharge Assignments	7,525	-1.3%		7,624	1.5%		7,511	-2.4%		7,692
Avg Tonnage Surcharge/Assgn	2,571	10.6%		2,325	-7.4%		2,511	3.4%		2,430

Arrow launch considered utility perhaps paid by agent

Are majority of				
Zone 1 moves?	2016	2015	2014	2013
Bulker moves	1,182	948	1,052	919

Tonnage Moved	2016	2015	2014	2013
Bulker	37,874,170	28,573,394	31,845,493	25,424,570
Car Carrier	29,187,005	30,538,859	29,413,760	29,165,760
Container	188,276,766	178,765,057	181,095,875	174,206,444
Other/Gen	1,029,518	7,175,699	4,730,177	4,686,407
Passenger	38,479,960	34,864,084	33,109,175	34,435,465
Reefer	157,791	75,284	120,008	105,526
Ro-Ro	9,012,534	8,855,389	9,179,980	8,739,445
Tanker	89,311,245	87,159,423	97,079,373	104,292,019
	393,328,989	376,007,189	386,573,841	381,055,636
	4.61%	-2.73%	1.45%	

7/1/15 - 6/30/16	1/1/15 - 6/30/15	1/1/14 - 12/31/14	1/1/13 - 12/31/13
Generate additional revenue of \$656,000 by implementing \$500 min tonnage charge. Thru attrition, reduce pilots from 53 to 52.	↑ Boat Fee \$53 to \$348; ↓ 6.52% LOA rates on Zones 2-6; ↓ 6.52% tonnage >20,000	Only ↑ Pilot Boat fee from \$49 to \$53	↑ across board 3%, not transp or surcharge with expectation of purchasing PPIUs
7/1/16 - 12/31/16			
no change in tariff			

Source of Revenue Breakdown
Jan and Feb for 2017, 2016, 2015, 2014, 2013

SUMMARY OF PSP										
Earned Revenue Rpt <u>Calendar Year</u>	Jan-17	Feb-17	Jan-16	Feb-16	Jan-15	Feb-15	Jan-14	Feb-14	Jan-13	Feb-13
--Counters & Misc Totals--										
Seattle Assigns	148	132	150	129	200	150	165	135	168	147
Ship Assigns	606	529	605	547	577	517	639	583	662	579
Pilot Boat Assigns	422	389	419	401	411	365	460	448	513	453
Tonnage Surcharge/Moves	594	520	589	538	566	501	631	572	644	567
Surcharge Revenue	1,456,699	1,256,480	1,329,440	1,296,111	1,216,397	1,132,850	1,478,353	1,311,311	1,426,964	1,285,372
--Source of Revenue Breakdown--										
LOA/Zone (*)	666,444	595,861	660,059	623,092	647,911	596,544	789,582	710,883	804,180	722,055
Harbor Shift (*)	88,169	74,490	96,559	74,268	67,821	52,138	91,173	76,683	76,642	62,206
Transportation (**)	89,385	74,474	88,464	79,737	78,814	72,628	98,762	82,889	96,600	82,426
BC Surcharge (***)	23,177	23,177	23,177	18,963	40,033	29,498	52,675	25,284	34,720	34,405
Bridge Transit (***)	9,592	3,151	7,802	10,064	6,677	3,768	6,302	6,036	9,314	5,788
Waterway (***)	58,558	46,436	59,869	62,225	42,503	35,891	65,265	53,770	59,147	50,141
Tonnage Surcharge (***)	1,456,699	1,256,480	1,329,440	1,296,111	1,216,397	1,132,849	1,478,353	1,311,311	1,426,964	1,285,372
Cancellations (***)	6,412	7,503	11,167	5,228	7,335	10,603	4,247	6,085	6,155	6,223
Compass Adj (***)			718	359	359	718	359	359	718	359
Standby/Sail Delay (***)	18,358	23,088	46,059	25,244	18,358	24,934	38,594	38,104	37,572	35,072
Slow Down (***)	4,658	5,754	42,470	3,562	5,206	3,562	1,918	4,932	6,028	3,562
Salmon Bay (***)		211	210				211			
Lk Union/Washington (***)		164	164							
Sea Trials (***)	1,183	2,535	1,690		2,028	1,014	1,352			
Delayed Arr & Dock Delay (***)	8,220	8,768	18,650	10,960	4,932	6,302	164	4,384	7,124	2,466
Miscellaneous (***)		42								
Pilot Boat (***)	146,856	135,372	145,812	139,548	143,028	127,020	24,380	23,744	25,137	22,197
Total-Source Section	\$2,577,711	\$2,257,506	\$2,532,310	\$2,349,361	\$2,281,401	\$2,097,469	\$2,653,337	\$2,344,464	\$2,590,301	\$2,312,272
-----Revenue-----										
Mileage (*)	754,613	670,351	756,618	697,360	715,732	648,682	880,755	787,566	880,822	784,261
Trans (**)	89,385	74,474	88,464	79,737	78,814	72,628	98,762	82,889	96,600	82,426
Special (***)	1,733,713	1,512,681	1,687,228	1,572,264	1,486,856	1,376,160	1,673,820	1,474,009	1,612,879	1,445,585
Total -Revenue Section	2,577,711	2,257,506	\$2,532,310	2,349,361	\$2,281,401	2,097,469	\$2,653,337	\$2,344,464	2,590,301	2,312,272
Revenue/Assignment, no Trans	\$4,106	\$4,127	\$4,039	\$4,149	\$3,817	\$3,917	\$3,998	\$3,879	\$3,767	\$3,851
Other Stats										
Pilot Boat Charges	146,856	135,372	145,812	139,548	143,028	127,020	24,380	23,744	25,137	22,197
Pilot Boat Assignments	422	389	419	401	411	365	460	448	513	453
Avg	348	348	348	348	348	348	53	53	49	49
Tonnage Surcharge Revenue	1,456,699	1,256,480	1,329,440	1,296,111	1,216,397	1,132,849	1,478,353	1,311,311	1,426,964	1,285,372
Tonnage Surcharge Charge #	594	520	589	538	566	501	631	572	644	567
Avg Tonnage Surcharge/Move	2,452	2,416	2,257	2,409	2,149	2,261	2,343	2,293	2,216	2,267

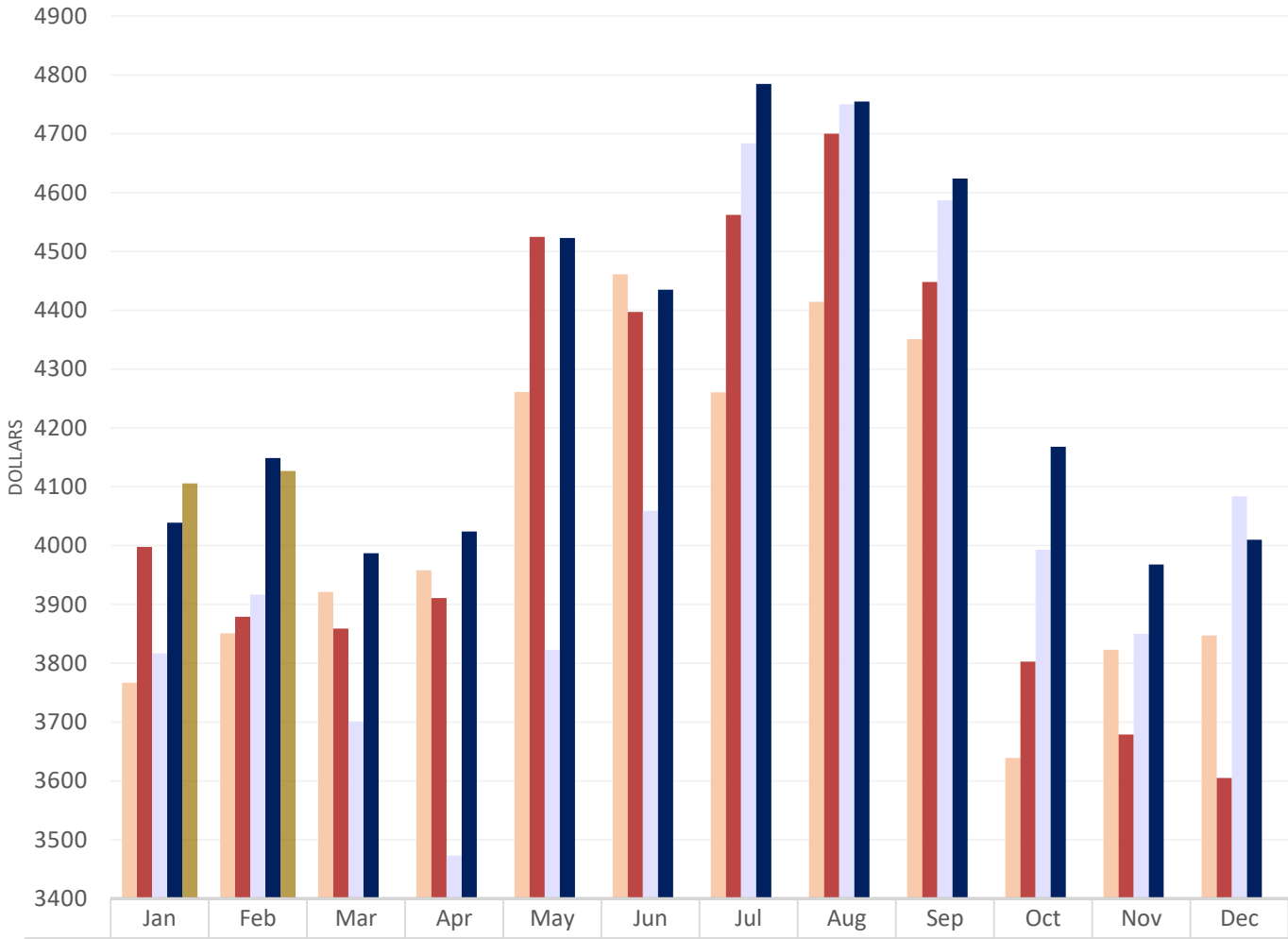
2017				Jan	Feb	YTD Actual Assign	Average Assgn 145/12=12.1
Pilot Code	Actual Trips PSP	Earned Revenue Report Detail		Actual Assign	Actual Assign		
4	ANA	Anacker, D.S.	Lic 3/27/12	7	12	19	9.5
4	ANT	Anthony, Michael	Lic 7/24/12	15	6	21	10.5
5	ARN	Arnold, J. E.		16	11	27	13.5
5	BLA	Blake, M.E.		16	14	30	15.0
5	BOU	Bouma, Blair	Lic 7/28/11	11	4	15	7.5
3	BRO	Brouillard, Dan	Lic 7/31/13	10	8	18	9.0
5	BRU	Brusco, David	Lic 3/11/10	14	7	21	10.5
5	BUJ	Bujacich, J.P.		3	16	19	9.5
3	CAW	Carley, W. Bud	Lic 1/10/13	6	8	14	7.0
5	CAI	Carlson, I.J.		11	10	21	10.5
1	CAJ	Carstensen, J	Lic. 9/30/15	13	9	22	11.0
5	COE	Coe, F.A.		11	10	21	10.5
2	COL	Coleman, S	Lic. 8/27/14	13	7	20	10.0
3	COR	Coryell, T.D.	Lic. 12/13/13	10	13	23	11.5
5	EME	Emerson, L. P.		10	13	23	11.5
4	ENF	Engstrom, F. E.	Lic 11/15/12	8	13	21	10.5
5	ENV	Engstrom, V.		12	9	21	10.5
2	GAL	Galvin, Jamie	Lic 11/11/14	13	14	27	13.5
5	GIE	Giese, P. A.		13	16	29	14.5
5	GRD	Grobschmit, D.W.		7	11	18	9.0
5	HAI	Hannuksela, J		14	10	24	12.0
5	HAR	Harris, J. B.		14	5	19	9.5
5	HEN	Henshaw, B. F.		8	0	8	4.0
5	HUR	Hurt, G. D.		8	4	12	6.0
2	JEN	Jensen, Brian	Lic. 12/22/14	9	12	21	10.5
5	KAL	Kalvoy, J.E.		3	9	12	6.0
4	KEA	Kearns, J.	Lic. 1/12/12	10	13	23	11.5
	KEN	Kelleher, N.T.	Lic. 4/14/16	8	9	17	8.5
5	KEP	Kelly, P.S.		14	15	29	14.5
5	KLA	Klapperich, E.C.		8	10	18	9.0
2	LIC	Lichty, E.C.	Lic. 5/1/14	14	8	22	11.0
1	LOB	Lowe, Brad	Lic. 9/23/15	11	11	22	11.0
3	LOW	Lowery, W.W.	Lic. 2/11/13	16	16	32	16.0
5	MAR	Marmol, E.		11	7	18	9.0
5	MAY	Mayer, D. W.		11	14	25	12.5
5	MOT	Moreno, S.		13	9	22	11.0
5	MOR	Mork, S. E.		14	10	24	12.0
5	NEW	Newman, A. J.		14	11	25	12.5
5	SAN	Sanders, D. A.		15	13	28	14.0
5	SCO	Scoggins, J		13	9	22	11.0
5	SCR	Scragg, J.		11	6	17	8.5
5	SEM	Semler, J. R.		14	16	30	15.0
5	SES	Semler, S.		16	10	26	13.0
5	SEY	Seymour, L.		9	17	26	13.0
5	SHA	Shaffer, D. L.		14	10	24	12.0
5	SHJ	Shaffer, J. A.		23	14	37	18.5
5	SHU	Shuler, M.		12	3	15	7.5
5	SLI	Sliker, W.J.		11	10	21	10.5
5	SOR	Soriano, D. B.		13	12	25	12.5
5	THG	Thoreson, George		19	10	29	14.5
5	VON	vonBrandenfels, E. M.		1	0	1	
5	WIG	Wildes, G. R.		16	15	31	15.5
Total Assignments/ Month				606	529	1135	
Number of licensed PS pilots				52	52	52	
Pilots on rotation				51	51	51	
Average Assgn/pilot on rotation				11.88	10.37		
PSP LOA Report (MOVES)						0	
Cancellations				606	529	1135	
# of Pilots with < 6 jobs(+1=Pres)				2 + 1	5 + 1		
Pilots w/>5 trips & their avg # of trips				49P; 12.2	46P; 11.15		
Medical circumstances:							

2017		Jan	Feb	
Pilot	Actual Trips PSP	Actual	Actual	YTD
Code	Earned Revenue	<u>Assign</u>	<u>Assign</u>	Actual
	Report Detail			<u>Assign</u>
				Average
				Assign
				145/12=12.1

Selected Comparatives Summary

PSP 2017	January	Jan to prev Jan	February	Feb to prev Feb	March	April	(cruise season) May	June	to date
Tariff Revenue-Trans	\$2,488,326	1.8%	\$2,183,031	-3.8%					\$4,671,357
RPA-Revenue per Assign	\$4,106	1.7%	\$4,127	-0.5%					\$4,116
# of licensed pilots w/o Pres	51		51						
Average Assgn/pilot on rotation	11.88		10.37						11.13
# pilots with < 6 jobs (+1=Pres)	2 + 1		5 + 1						
Assignments	606	0.2%	529	-3.3%					1135
Assignment change	1		-18						-17
Moves	594	0.8%	520	-3.3%					1114
Moves change	5		-18						-13
Cancellations	12	-25.0%	9	0.0%					21
Tonnage Revenue	\$1,456,699	9.6%	\$1,256,480	-3.1%					\$2,713,179
Tonnage Revenue per Move	\$2,452	8.7%	\$2,416	0.3%					\$2,436
Gross Tonnage Moved	31,303,842	5.7%	\$27,797,983	-0.1%					\$59,101,825
PSP 2016	January	Jan to prev Jan	February	Feb to prev Feb	March	April	(cruise season) May	June	6 mo to date
Tariff Revenue-Trans	\$2,443,846	11.0%	\$2,269,624	12.1%	\$2,419,887	\$2,350,195	\$3,039,515	\$3,215,179	\$15,738,246
RPA-Revenue per Assign	\$4,039	5.8%	\$4,149	5.9%	\$3,987	\$4,024	\$4,523	\$4,435	\$4,208
# of licensed pilots w/o Pres	51		51		50	51	51	51	
Average Assgn/pilot	11.86		10.73		12.14	11.45	13.18	14.22	
# pilots with < 6 jobs(+1=Pres)	6 + 1		8 + 1		3 + 1	7 + 1	2 + 1	4 + 1	
Assignments	605	4.9%	547	5.8%	607	584	672	725	3740
Assignment change	28		30		-32	-36	-102	-66	-178
Moves	589	4.1%	538	7.4%	591	573	665	710	3666
Moves change	23		37		-32	-25	-95	-61	-153
Cancellations	16		9	-0.016	16	11	7	15	74
Tonnage Revenue	\$1,329,440		\$1,296,111		\$1,345,308	\$1,322,435	\$1,832,625	\$1,923,132	\$9,049,051
Tonnage Revenue per Move	\$2,257		\$2,409		\$2,276	\$2,308	\$2,756	\$2,709	\$2,468
Gross Tonnage Moved	29,609,106	7.3%	27,830,304	12.8%	29,667,076	28,676,198	35,896,326	37,105,794	188,784,804
PSP 2015	January		February		March	April	(cruise season) May	June	6 mo to date
Tariff Revenue-Trans	\$2,202,588	-13.8%	\$2,024,841	-10.5%	\$2,365,096	\$2,153,086	\$2,959,296	\$3,210,995	\$14,915,902
RPA-Revenue per Assign	\$3,817	-4.5%	\$3,917	1.0%	\$3,701	\$3,473	\$3,823	\$4,059	\$3,807
# of licensed pilots w/o Pres	53		53		52	52	52	52	
Average Assgn/pilot	10.89		9.75		12.29	11.92	14.88	15.51	
# pilots with < 6 jobs(+1=Pres)	7		9		4	2	1	3	
Assignments	577	-9.7%	517	-11.3%	639	620	774	791	3918
Assignment change	-62		-66		16	-10	103	101	82
Moves	566	-10.3%	501	-12.4%	623	598	760	771	3819
Moves change	-65		-71	-0.131	6	-23	95	89	31
Cancellations	11		16	0.011	16	22	14	20	99
Tonnage Revenue	\$1,216,397		\$1,132,850		\$1,263,220	\$1,074,585	\$1,566,491	\$1,816,296	\$8,069,839
Tonnage Revenue per Move	\$2,149		\$2,261		\$2,028	\$1,797	\$2,061	\$2,356	\$2,113
Gross Tonnage Moved	27,588,264	-13.5%	24,671,828	-14.4%	29,034,609	26,097,422	33,836,475	37,785,703	179,014,301
PSP 2014	January		February		March	April	(cruise season) May	June	6 mo to date
Tariff Revenue-Trans	\$2,554,575	2.4%	\$2,261,575	1.4%	\$2,403,969	\$2,464,091	\$3,036,561	\$3,033,723	\$15,754,494
RPA-Revenue per Assign	\$3,998	6.1%	\$3,879	0.7%	\$3,859	\$3,911	\$4,525	\$4,397	\$4,107
# of licensed pilots w/o Pres	53		53	+1.5 p	53	53	53	53	
Average Assgn/pilot	12.06		11.00		11.75	11.89	12.66	13.27	
# pilots with < 6 jobs(+1=Pres)	5+1		6+1		5+1	2+1	4+1	5+1	
Assignments	639	-3.5%	583	0.7%	623	630	671	690	3836
Assignment change	-23		4		2	71	9	640	74
Moves	631	-2.3%	572	0.7%	617	621	665	682	3788
Moves change	-15		4	-0.009	9	64	13	8	83
Cancellations	8		11	-1E-04	6	9	6	8	48
Tonnage Revenue	\$1,478,353		\$1,311,311		\$1,391,531	\$1,444,248	\$1,896,847	\$1,888,492	\$9,410,782
Tonnage Revenue per Move	\$2,343		\$2,293		\$2,255	\$2,326	\$2,852	\$2,769	\$2,484
Gross Tonnage Moved	31,907,495	1.5%	28,825,535	5.9%	30,626,216	30,679,931	36,018,027	36,294,816	194,352,020

Monthly Revenue per Assignment 2013 - 2017
Calendar Year



Number of and Tonnage Moved by Vessel Type

2017		Bulker	#	Car Carrier	#	Container	#	General	#	Naval	#	Other	#	Passenger	#	Reefer	#	Ro-Ro	#	Tanker	#	ATB & % of Month			Total Tonnage	#
January		3,598,299	110	2,601,920	43	16,040,517	220	25,203	11	227,040	5	54,307	4	5,841	1	-	0	676,105	17	8,074,610	183	48	26%		31,303,842	594
February		3,398,733	93	2,168,144	36	14,860,771	209	16,208	10			41,730	6	5,841	1			531,502	17	6,202,672	148	46	31%		27,225,601	520
Change @Feb2016/2017		6,997,032	203	4,770,064	79	30,901,288	429	41,411	21	227,040	5	96,037	10	11,682	2	-	-	1,207,607	34	14,277,282	331	94	28%		58,529,443	1,114
		1,210,048	25	53,464	(5)	(475,361)	(15)	(20,895)	-	158,975	1	78,192	9	(5,841)	(1)	-	-	(82,194)	(3)	173,645	(24)	(36)	(9%)	#	1,090,034	(13)
2016		Bulker	#	Car Carrier	#	Container	#	General	#	Naval	#	Other	#	Passenger	#	Reefer	#	Ro-Ro	#	Tanker	#	ATB & % of Month			Total Tonnage	#
January		2,889,849	88	2,147,863	39	16,476,854	232	26,127	14	68,065	4	17,845	1	5,841	1			577,345	19	7,399,317	191	76	40%		29,609,106	589
February		2,897,135	90	2,568,737	45	14,899,795	212	36,179	7					11,682	2			712,456	18	6,704,320	164	54	33%		27,830,304	538
		5,786,984	178	4,716,600	84	31,376,649	444	62,306	21	68,065	4	17,845	1	17,523	3	-	#	1,289,801	37	14,103,637	355	130	37%	#	57,439,410	1,127
2015		Bulker	#	Car Carrier	#	Container	#	General	#	Naval	#	Other	#	Passenger	#	Reefer	#	Ro-Ro	#	Tanker	#	ATB			Total Tonnage	#
January		3,331,935	102	2,071,601	35	13,748,321	219	436,506	23			61,474	4	5,841	1			600,566	18	7,332,020	164	63	38%		27,588,264	566
February		2,392,118	70	2,490,846	43	12,417,478	209	136,892	5			125,628	7	5,841	1			648,961	21	6,454,064	145	51	35%		24,671,828	501
		5,724,053	172	4,562,447	78	26,165,799	428	573,398	28	-	#	187,102	11	11,682	2	-	#	1,249,527	39	13,786,084	309	114	37%		52,260,092	1,067
2014		Bulker	#	Car Carrier	#	Container	#	General	#	Naval	#	Other	#	Passenger	#	Reefer	#	Ro-Ro	#	Tanker	#	Wood Chip			Total Tonnage	#
January		3,050,105	93	2,728,105	51	16,200,977	252	409,431	15			31,570	3	5,841	1			753,337	21	8,728,129	195				31,907,495	631
February		3,583,737	113	2,206,011	39	13,775,913	212	116,907	5	18,476	2	92,682	3	5,841	1			588,345	20	8,437,623	177				28,825,535	572
		6,633,842	206	4,934,116	90	29,976,890	464	526,338	20	18,476	2	124,252	6	11,682	2	-	#	1,341,682	41	17,165,752	372	-	-	#	60,733,030	1,203
2013		Bulker	#	Car Carrier	#	Container	#	General	#	Naval	#	Other	#	Passenger	#	Reefer	#	Ro-Ro	#	Tanker	#	Wood Chip			Total Tonnage	#
January		2,759,567	95	2,232,371	40	15,483,660	257	114,163	5	15,752	2	43,514	4	5,841	1			557,373	17	10,216,395	225				31,428,636	646
February		2,330,407	82	2,222,529	43	13,587,705	229	338,693	15	-	1			121,873	5			603,183	19	8,023,750	174				27,228,140	568
		5,089,974	177	4,454,900	83	29,071,365	486	452,856	20	15,752	3	43,514	4	127,714	6	-	#	1,160,556	36	18,240,145	399	-	-	#	58,656,776	1,214

Vessel Moves by Zone and Type

Year	Month	Moves YTD	Moves/ Month	SHIP MOVES BY ZONE/DISTANCE						SHIP MOVES BY TYPE										Totals	moves
				IntraHbr	≤ 30 mi	≤50 mi	≤75 mi	≤100mi	101+ mi	Car											
				1	2	3	4	5	6	Bulker	Carrier	Container	General	Naval	Other	Passngr	Reefer	Ro-Ro	Tanker		
2017	Jan		594	111	114	53	150	166	0	110	43	220	11	5	4	1	0	17	183	594	moves
	Feb	1,114	520	80	101	52	144	143		93	36	209	10	0	6	1	0	17	148	520	moves
			1114	191	215	105	294	309	0	203	79	429	21	5	10	2	0	34	331	1114	
	@Feb2016/2017		(13)	(21)	29	1	(2)	(20)	0	25	(5)	(15)	0	1	9	(1)	0	(3)	(24)	(13)	
2016	Jan		589	121	84	61	157	166	0	88	39	232	14	4	1	1		19	191	589	
	Feb	1,127	538	91	102	43	139	163	0	90	45	212	7			2		18	164	538	moves
			1127	212	186	104	296	329	0	178	84	444	21	4	1	3	0	37	355	1127	
2015	Jan		566	88	93	51	189	144	1	102	35	219	23		4	1		18	164	566	moves
	Feb	1,067	501	67	88	40	154	144	4	70	43	209	5		7	1		21	145	501	moves
			1067	155	181	91	343	288	5	172	78	428	28	0	11	2	0	39	309	1067	
2014	Jan		631	113	96	56	168	198	0	93	51	252	16		2	1		21	195	631	moves
	Feb	1,203	572	94	99	52	155	172	0	113	39	212	5	2	3	1		20	177	572	moves
			1203	207	195	108	323	370	0	206	90	464	21	2	5	2	0	41	372	1203	
2013	Jan		646	101	104	58	192	191	0	95	40	257	5	2	4	1		17	225	646	moves
	Feb	1,214	568	81	88	49	172	178		82	43	229	15	1		5		19	174	568	moves
			1214	182	192	107	364	369	0	177	83	486	20	3	4	6	0	36	399	1214	

MOVES BY
Length Overall and Distance (Zone)
Jan and Feb, 2017-2014

FEBRUARY 2017								FEBRUARY 2016								FEBRUARY 2015								FEBRUARY 2014												
YTD	Totals	LOA	IntraHbr	≤ 30 mi	≤ 50 mi	≤ 75 mi	≤ 100mi	101+ mi	YTD	Totals	LOA	IntraHbr	≤ 30 mi	≤ 50 mi	≤ 75 mi	≤ 100mi	101+ mi	YTD	Totals	LOA	IntraHbr	≤ 30 mi	≤ 50 mi	≤ 75 mi	≤ 100mi	101+ mi	YTD	Totals	LOA	IntraHbr	≤ 30 mi	≤ 50 mi	≤ 75 mi	≤ 100mi	101+ mi	
34	22	Up to 500	0	6	5	8	3		20	6	Up to 500	2	0	4	0	0		27	10	Up to 500	4	1	5				21	12	Up to 500	2	1	3	6			
125	69	500-599	3	11	4	13	38		133	65	500-599	18	20	3	15	9		111	49	500-599	10	10	12	12	5		133	54	500-599	12	4	9	14	15		
310	140	600-699	12	42	25	30	31		316	153	600-699	14	39	28	30	42		264	121	600-699	7	24	15	36	38	1	321	167	600-699	14	51	29	44	29		
174	79	700-799	9	22	5	25	18		163	75	700-799	5	17	2	20	31		177	88	700-799	16	10	4	19	39		167	79	700-799	17	7	2	15	38		
158	80	800-899	12	5	12	17	34		126	62	800-899	7	13	5	15	22		132	66	800-899	1	15	4	15	31		193	95	800-899	7	23	9	20	36		
154	65	900-999	15	7	0	24	19		204	101	900-999	21	3	1	31	45		254	124	900-999	20	22	4	52	24	2	209	87	900-999	11	9		36	31		
159	65	1000--	29	8	1	27			165	76	1000--	24	10		28	14		98	39	1000--	9	7		15	7	1	159	78	1000--	31	4		20	23		
	520		80	101	52	144	143	0	moves	538		91	102	43	139	163	0		497		67	88	40	154	144	4		572		94	99	52	155	172	0	
YTD totals		1114	191	215	105	294	309	0	YTD totals		1127	212	186	104	296	329	0	YTD totals		1063	155	181	91	343	288	5	YTD totals		1203	207	195	108	323	370	0	
YTD Averages		557.0	95.5	107.5	52.5	147.0	154.5	0.0	YTD Averages		563.5	106.0	93.0	52.0	148.0	164.5	0.0	YTD Averages		531.5	77.5	90.5	45.5	171.5	144.0	2.5	YTD Averages		601.5	103.5	97.5	54.0	161.5	185.0	0.0	

JANUARY 2017								JANUARY 2016								JANUARY 2015								JANUARY 2014												
YTD	Totals	LOA	IntraHbr	≤ 30 mi	≤ 50 mi	≤ 75 mi	≤ 100mi	101+ mi	YTD	Totals	LOA	IntraHbr	≤ 30 mi	≤ 50 mi	≤ 75 mi	≤ 100mi	101+ mi	YTD	Totals	LOA	IntraHbr	≤ 30 mi	≤ 50 mi	≤ 75 mi	≤ 100mi	101+ mi	YTD	Totals	LOA	IntraHbr	≤ 30 mi	≤ 50 mi	≤ 75 mi	≤ 100mi	101+ mi	
	12	Up to 500	1	4	7					14	Up to 500	4	3	1	6				17	Up to 500	3	1	4	9				9	Up to 500	4		3	2			
	56	500-599	25	7	2	16	6			68	500-599	14	12	11	23	8			62	500-599	12	15	8	21	6			79	500-599	17	13	15	15	19		
	170	600-699	13	51	32	34	40			163	600-699	20	35	34	31	43			143	600-699	13	22	26	39	43			154	600-699	13	38	27	46	30		
	95	700-799	13	19	3	22	38			88	700-799	17	9	4	26	32			88	700-799	17	8	2	24	38			88	700-799	22	2		19	45		
	78	800-899	13	13	9	23	20			64	800-899	17	7	9	13	18			66	800-899	5	16	10	13	22			98	800-899	7	25	10	23	33		
	89	900-999	15	8		28	38			103	900-999	20	7	2	28	46			130	900-999	20	22	1	61	26			122	900-999	17	13	1	46	45		
	94	1000--	31	12		27	24			89	1000--	29	11		30	19			59	1000--	18	9		22	9	1		81	1000--	33	5		17	26		
assignm	594		111	114	53	150	166	0	moves	589		121	84	61	157	166	0		566		88	93	51	189	144	1		631		113	96	56	168	198	0	