

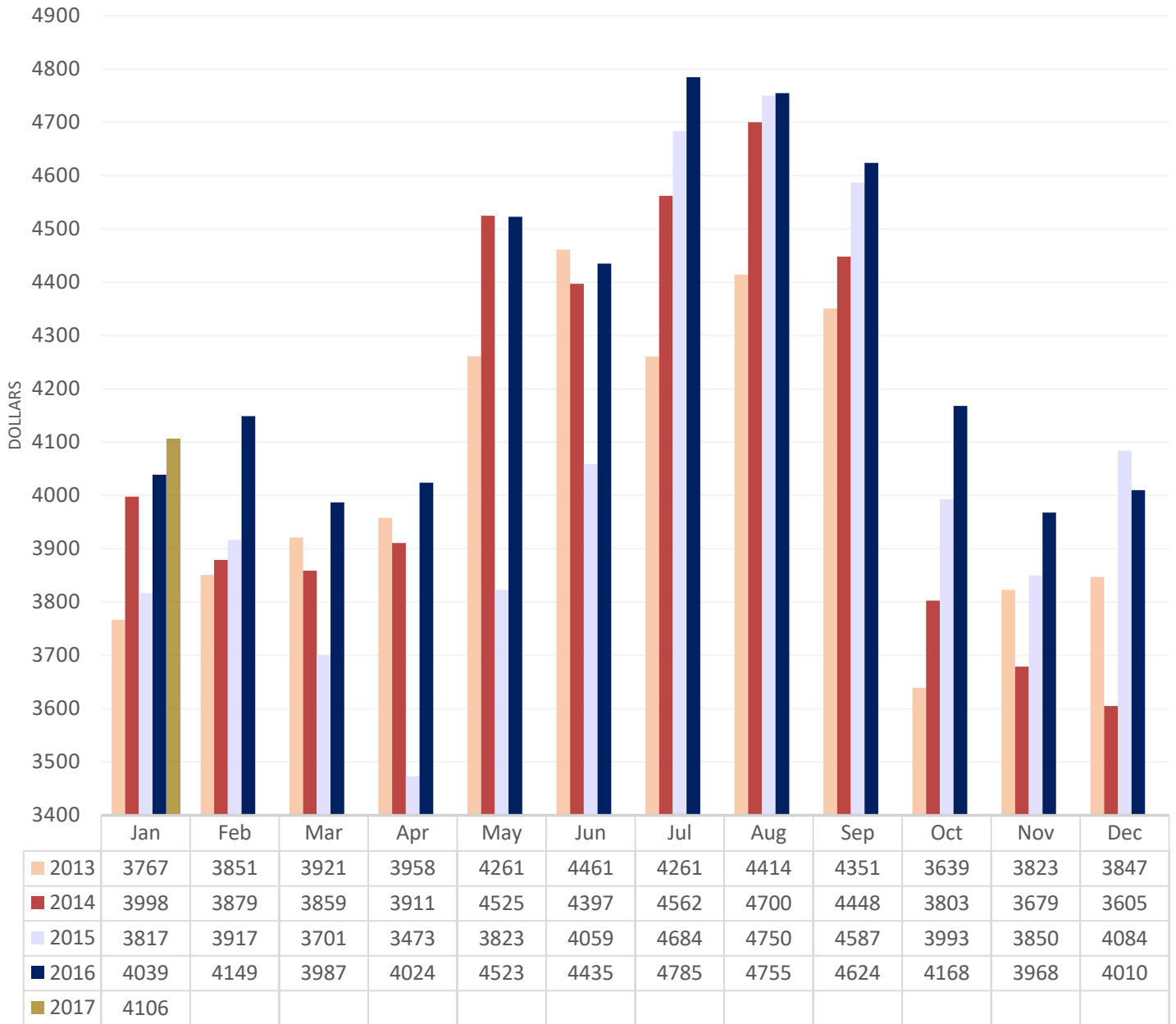
SUMMARY OF PSP		January - J			
Earned Revenue Rpt <u>Calendar Year</u>	Jan-17	Jan-16	Jan-15	Jan-14	
<b>--Counters &amp; Misc Totals--</b>			<b>Rev neutral</b>		
Seattle Assigns	148	150	200	165	
Ship Assigns	606	605	577	639	
Pilot Boat Assigns	422	419	411	460	
Tonnage Surcharge/Moves	594	589	566	631	
Surcharge Revenue	1,456,699	1,329,440	1,216,397	1,478,353	
<b>--Source of Revenue Breakdown--</b>					
LOA/Zone (*)	666,444	660,059	647,911	789,582	
Harbor Shift (*)	88,169	96,559	67,821	91,173	
Transportation (**)	89,385	88,464	78,814	98,762	
BC Surcharge (***)	23,177	23,177	40,033	52,675	
Bridge Transit (***)	9,592	7,802	6,677	6,302	
Waterway (***)	58,558	59,869	42,503	65,265	
Tonnage Surcharge (***)	1,456,699	1,329,440	1,216,397	1,478,353	
Cancellations (***)	6,412	11,167	7,335	4,247	
Compass Adj (***)		718	359	359	
Standby/Sail Delay (***)	18,358	46,059	18,358	38,594	
Slow Down (***)	4,658	42,470	5,206	1,918	
Salmon Bay (***)		210		211	
Lk Union/Washington (***)		164			
Sea Trials (***)	1,183	1,690	2,028	1,352	
Delayed Arr & Dock Delay (***)	8,220	18,650	4,932	164	
Miscellaneous (***)					
Pilot Boat (***)	146,856	145,812	143,028	24,380	
<b>Total-Source Section</b>	<b>2,577,711</b>	<b>\$2,532,310</b>	<b>\$2,281,401</b>	<b>\$2,653,337</b>	
<b>-----Revenue-----</b>					
Mileage (*)	754,613	756,618	715,732	880,755	
Trans (**)	89,385	88,464	78,814	98,762	
Special (***)	1,733,713	1,687,228	1,486,856	1,673,820	
<b>Total -Revenue Section</b>	<b>2,577,711</b>	<b>\$2,532,310</b>	<b>\$2,281,401</b>	<b>\$2,653,337</b>	
<b>Revenue/Assignment, no Trans</b>	<b>\$4,106</b>	<b>\$4,039</b>	<b>\$3,817</b>	<b>\$3,998</b>	
<b>Other Stats</b>					
Pilot Boat Charges	146,856	145,812	143,028	24,380	
Pilot Boat Assignments	422	419	411	460	
Avg	348	348	348	53	
Tonnage Surcharge Revenue	1,456,699	1,329,440	1,216,397	1,478,353	
Tonnage Surcharge Charge #	594	589	566	631	
Avg Tonnage Surcharge/Move	2,452	2,257	2,149	2,343	

<b>C/</b>	<b>CALENDAR YEAR</b>							
	<b>2017</b>	<b>Month</b>	<b>Revenue(Trans)</b>	<b>Assignments</b>	<b>RPA for month</b>	<b>YTD Rev</b>	<b>YTD Assgn</b>	<b>YTD RPA</b>
		Jan	2,488,326	606	\$ 4,106			
	<b>2016</b>	<b>Month</b>	<b>Revenue(Trans)</b>	<b>Assignments</b>	<b>RPA for month</b>	<b>YTD Rev</b>	<b>YTD Assgn</b>	<b>YTD RPA</b>
		Jan	2,443,846	605	4,039			
		Feb	2,269,624	547	4,149	4,713,470	1,152	4,092
		Mar	2,419,890	607	3,987	7,133,360	1,759	4,055
		Apr	2,350,195	584	4,024	9,483,555	2,343	4,048
		May	3,039,515	672	4,523	12,523,070	3,015	4,154
		Jun	3,215,179	725	4,435	15,738,249	3,740	4,208
		Jul	3,320,803	694	4,785	19,059,052	4,434	4,298
		Aug	3,261,886	686	4,755	22,320,938	5,120	4,360
	Sep	3,019,483	653	4,624	25,340,421	5,773	4,389	
	Oct	2,571,409	617	4,168	27,911,830	6,390	4,368	
	Nov	2,622,922	661	3,968	30,534,752	7,051	4,331	
	Dec	2,446,187	610	4,010	32,980,939	7,661	\$4,305	
		32,980,939	7,661			(134)		
<b>2015</b>	<b>Month</b>	<b>Revenue(Trans)</b>	<b>Assignments</b>	<b>RPA for month</b>	<b>YTD Rev</b>	<b>YTD Assgn</b>	<b>YTD RPA</b>	
	Jan	2,202,588	577	3,817				
	Feb	2,024,842	517	3,917	4,227,430	1,094	\$3,864	
	Mar	2,365,096	639	3,701	6,592,526	1,733	\$3,804	
	Apr	2,153,086	620	3,473	8,745,612	2,353	\$3,717	
	May	2,959,296	774	3,823	11,704,908	3,127	\$3,743	
	Jun	3,210,995	791	4,059	14,915,903	3,918	\$3,807	
	Jul	2,960,243	632	4,684	17,876,146	4,550	\$3,929	
	Aug	3,291,439	693	4,750	21,167,585	5,243	\$4,037	
	Sep	2,756,533	601	4,587	23,924,118	5,844	\$4,094	
	Oct	2,659,033	666	3,993	26,583,151	6,510	\$4,083	
	Nov	2,479,703	644	3,850	29,062,854	7,154	\$4,062	
	Dec	2,618,146	641	4,084	31,681,000	7,795	\$4,064	
		31,681,000	7,795			179		
<b>2014</b>	<b>Month</b>	<b>Revenue(Trans)</b>	<b>Assignments</b>	<b>RPA for month</b>	<b>YTD Rev</b>	<b>YTD Assgn</b>	<b>YTD RPA</b>	
	Jan	2,554,575	639	3,998				
	Feb	2,261,575	583	3,879	4,816,150	1,222	3,941	
	Mar	2,403,969	623	3,859	7,220,119	1,845	3,913	
	Apr	2,464,091	630	3,911	9,684,210	2,475	3,913	
	May	3,036,561	671	4,525	12,720,771	3,146	4,043	
	Jun	3,033,723	690	4,397	15,754,494	3,836	4,107	
	Jul	3,024,434	663	4,562	18,778,928	4,499	4,174	
	Aug	3,219,532	685	4,700	21,998,460	5,184	4,244	
	Sep	2,655,500	597	4,448	24,653,960	5,781	4,265	
	Oct	2,430,062	639	3,803	27,084,022	6,420	4,219	
	Nov	2,177,805	592	3,679	29,261,827	7,012	\$4,173	
	Dec	2,177,417	604	3,605	31,439,244	7,616	\$4,128	
		31,439,244	7,616			(203)		
<b>2013</b>	<b>Month</b>	<b>Revenue(Trans)</b>	<b>Assignments</b>	<b>RPA for month</b>	<b>YTD Rev</b>	<b>YTD Assgn</b>	<b>YTD RPA</b>	
	Jan	2,493,701	662	3,767				
	Feb	2,229,846	579	3,851	4,723,547	1,241	3,806	
	Mar	2,311,037	621	3,721	7,034,584	1,862	3,778	
	Apr	2,212,733	559	3,958	9,247,317	2,421	3,820	
	May	2,820,632	662	4,261	12,067,949	3,083	3,914	
	Jun	3,028,751	679	4,461	15,096,700	3,762	4,013	
	Jul	3,046,278	715	4,261	18,142,978	4,477	4,052	
	Aug	3,112,078	705	4,414	21,255,056	5,182	4,102	
	Sep	2,858,511	657	4,351	24,113,567	5,839	4,130	
	Oct	2,481,926	682	3,639	26,595,493	6,521	4,078	
	Nov	2,465,836	645	3,823	29,061,329	7,166	\$4,055	
	Dec	2,512,313	653	3,847	31,573,642	7,819	\$4,038	
		31,573,642	7,819					
<b>CALENDAR YEAR</b>	<b>CALENDAR YEAR</b>							

TARIFF YEAR	T <sub>1</sub>	<b>2016</b>	<b>Month</b>	<b>Revenue(Trans)</b>	<b>Assignments</b>	<b>RPA for month</b>	<b>YTD Rev</b>	<b>YTD Assgn</b>	<b>YTD RPA</b>
			Jul	3,320,803	694	\$ 4,785			
				19,731,016					
		<b>2015</b>	<b>Month</b>	<b>Revenue(Trans)</b>	<b>Assignments</b>	<b>RPA for month</b>	<b>YTD Rev</b>	<b>YTD Assgn</b>	<b>YTD RPA</b>
			Jul	2,960,243	632	4,684			
			Aug	3,291,439	693	4,750	6,251,682	1,325	\$4,718
			Sep	2,756,533	601	4,587	9,008,215	1,926	\$4,677
			Oct	2,659,033	666	3,993	11,667,248	2,592	\$4,501
			Nov	2,479,703	644	3,850	14,146,951	3,236	\$4,372
			Dec	2,618,146	641	4,084	16,765,097	3,877	\$4,324
			Jan	2,443,846	605	4,039	19,208,943	4,482	\$4,286
			Feb	2,269,624	547	4,149	21,478,567	5,029	\$4,271
			Mar	2,419,890	607	3,987	23,898,457	5,636	\$4,240
	Apr	2,350,195	584	4,024	26,248,652	6,220	\$4,220		
	May	3,039,515	672	4,523	29,288,167	6,892	\$4,250		
	<b>2016</b>	<b>Jun</b>	<b>3,215,179</b>	<b>725</b>	<b>4,435</b>	<b>32,503,346</b>	<b>7,617</b>	<b>\$4,267</b>	
			32,503,346	7,617					
TARIFF YEAR	T <sub>2</sub>	<b>2014</b>	<b>Month</b>	<b>Revenue(Trans)</b>	<b>Assignments</b>	<b>RPA for month</b>	<b>YTD Rev</b>	<b>YTD Assgn</b>	<b>YTD RPA</b>
			Jul	3,024,434	663	4,562			
			Aug	3,219,532	685	4,700	6,243,966	1,348	\$4,632
			Sep	2,655,500	597	4,448	8,899,466	1,945	\$4,576
			Oct	2,430,062	639	3,803	11,329,528	2,584	\$4,384
			Nov	2,177,805	592	3,679	13,507,333	3,176	\$4,253
			Dec	2,177,417	604	3,605	15,684,750	3,780	\$4,149
			Jan	2,202,588	577	3,817	17,887,338	4,357	\$4,105
			Feb	2,024,842	517	3,917	19,912,180	4,874	\$4,085
			Mar	2,365,096	639	3,701	22,277,276	5,513	\$4,041
			Apr	2,153,086	620	3,473	24,430,362	6,133	\$3,983
			May	2,959,296	774	3,823	27,389,658	6,907	\$3,965
			<b>2015</b>	<b>Jun</b>	<b>3,210,995</b>	<b>791</b>	<b>4,059</b>	<b>30,600,653</b>	<b>7,698</b>
			30,600,653	7,698					
TARIFF YEAR	T <sub>3</sub>	<b>2013</b>	<b>Month</b>	<b>Revenue(Trans)</b>	<b>Assignments</b>	<b>RPA for month</b>	<b>YTD Rev</b>	<b>YTD Assgn</b>	<b>YTD RPA</b>
			Jul	3,046,278	715	4,261			
			Aug	3,112,078	705	4,414	6,158,356	1,420	\$4,337
			Sep	2,858,511	657	4,351	9,016,867	2,077	\$4,341
			Oct	2,481,926	682	3,639	11,498,793	2,759	\$4,168
			Nov	2,465,836	645	3,823	13,964,629	3,404	\$4,102
			Dec	2,512,313	653	3,847	16,476,942	4057	\$4,061
			Jan	2,554,575	639	3,998	19,031,517	4696	\$4,053
			Feb	2,261,575	583	3,879	21,293,092	5,279	\$4,034
			Mar	2,403,969	623	3,859	23,697,061	5,902	\$4,015
			Apr	2,464,091	630	3,911	26,161,152	6,532	\$4,005
			May	3,036,561	671	4,525	29,197,713	7,203	\$4,054
			<b>2014</b>	<b>Jun</b>	<b>3,033,723</b>	<b>690</b>	<b>4,397</b>	<b>32,231,436</b>	<b>7,893</b>
			32,231,436	7,893					
TARIFF YEAR	T <sub>4</sub>	<b>2012</b>	<b>Month</b>	<b>Revenue(Trans)</b>	<b>Assignments</b>	<b>RPA for month</b>	<b>YTD Rev</b>	<b>YTD Assgn</b>	<b>YTD RPA</b>
			Jul	3,152,810	728	4,331			
			Aug	3,193,924	721	4,430	6,346,734	1,449	\$4,380
			Sep	2,866,720	661	4,337	9,213,454	2,110	\$4,367
			Oct	2,411,757	629	3,834	11,625,211	2,739	\$4,244
			Nov	2,255,805	600	3,760	13,881,016	3,339	\$4,157
			Dec	2,289,593	625	3,663	16,170,609	3,964	\$4,079
			Jan	2,493,701	662	3,767	18,664,310	4,626	\$4,035
			Feb	2,229,846	579	3,851	20,894,156	5,205	\$4,014
			Mar	2,311,037	621	3,721	23,205,193	5,826	\$3,983
			Apr	2,212,733	559	3,958	25,417,926	6,385	\$3,981
			May	2,820,632	662	4,261	28,238,558	7,047	\$4,007
			<b>2013</b>	<b>Jun</b>	<b>3,028,751</b>	<b>679</b>	<b>4,461</b>	<b>31,267,309</b>	<b>7,726</b>
			31,267,309	7,726					

2017	Avg Rev per ASSIGN YTD	Avg Rev per ASSIGN this Month	Billed	(Transpt'n)	Total Tariff (Revenue) \$\$ Billed	Assignmtns	Cancel
			minus			Earned Rev	
			Transportation			Detail	
January		\$ 4,106	2,488,326	89,385	2,577,711	606	12
2016	Avg Rev per ASSIGN YTD	Avg Rev per ASSIGN this Month	Billed	(Transpt'n)	Total Tariff (Revenue) \$\$ Billed	Assignmtns	Cancel
			minus			Earned Rev	
			Transportation			Detail	
January	\$ 4,039	\$ 4,039	2,443,846	88,464	2,532,310	605	16
February	\$ 4,305	\$ 4,149	2,269,624	79,737	2,349,361	547	9
March	\$ 4,448	\$ 3,987	2,419,890	90,643	2,510,533	607	16
April	\$ 4,048	\$ 4,024	2,350,195	87,956	2,438,151	584	11
May	\$ 4,154	\$ 4,523	3,039,515	92,009	3,131,524	672	7
June	\$ 4,208	\$ 4,435	3,215,179	100,031	3,315,210	725	15
July	\$ 4,298	\$ 4,785	3,320,803	96,653	3,417,456	694	5
August	\$ 4,360	\$ 4,755	3,261,886	89,893	3,351,779	686	5
September	\$ 4,389	\$ 4,624	3,019,483	94,080	3,113,563	653	3
October	\$ 4,368	\$ 4,168	2,571,409	94,938	\$ 2,666,346	617	11
November	\$ 4,331	\$ 3,968	2,622,922	94,799	\$ 2,717,721	661	18
December	\$ 4,305	\$ 4,010	2,446,187	87,905	\$ 2,534,092	610	20
ytd			\$ 32,980,938	1,097,108	\$34,078,046	7661	136
2/16-12/15 Δ	241	(74)	\$ 1,299,940	(22,297)	1,277,643	(134)	(32)
2015	Avg Rev per ASSIGN YTD	Avg Rev per ASSIGN this Month	Billed	(Transpt'n)	Total Tariff (Revenue) \$\$ Billed	Assignmtns	Cancel
			minus			Earned Rev	
			Transportation			Detail	
January	\$ 3,817	\$ 3,817	2,202,588	78,813	2,281,401	577	11
February	\$ 3,864	\$ 3,917	2,024,842	72,628	2,097,470	517	16
March	\$ 4,208	\$ 3,701	2,365,096	84,102	2,449,197	639	16
April	\$ 3,717	\$ 3,473	2,153,086	89,666	2,242,751	620	22
May	\$ 3,743	\$ 3,823	2,959,296	97,134	3,056,429	774	14
June	\$ 3,807	\$ 4,059	3,210,995	120,359	3,331,354	791	20
July	\$ 3,929	\$ 4,684	2,960,243	87,317	3,047,560	632	11
August	\$ 4,037	\$ 4,750	3,291,439	98,290	3,389,728	693	9
September	\$ 4,094	\$ 4,587	2,756,533	83,259	2,839,792	601	11
October	\$ 4,083	\$ 3,993	2,659,033	97,472	\$ 2,756,505	666	13
November	\$ 4,062	\$ 3,850	2,479,703	98,603	\$ 2,578,306	644	15
December	\$ 4,064	\$ 4,084	2,618,146	111,764	\$ 2,729,910	641	10
ytd			\$ 31,680,998	1,119,405	\$32,800,403	7795	168
2015/2014 Δ	(64)	\$ 479	241,755	35,854	277,609	179	67
2014	Avg Rev per ASSIGN YTD	Avg Rev per ASSIGN this Month	Billed	(Transpt'n)	Total Tariff (Revenue) \$\$ Billed	Assignmtns	Cancel
			minus			Earned Rev	
			Transportation			Detail	
January	3,998	3,998	2,554,575	98,762	2,653,337	639	8
February	3,941	3,879	2,261,575	82,889	2,344,464	583	11
March	3,913	3,859	2,403,969	90,895	2,494,864	623	6
April	3,913	3,911	2,464,091	85,345	2,549,436	630	9
May	4,043	4,525	3,036,561	85,787	3,122,348	671	6
June	4,107	4,397	3,033,723	95,193	3,128,916	690	8
July	4,174	4,562	3,024,434	88,977	3,113,411	663	5
August	4,244	4,700	3,219,531	97,072	3,316,603	685	8
September	4,265	4,448	2,655,500	91,878	2,747,378	597	5
October	4,219	3,803	2,430,062	98,126	2,528,188	639	12
November	4,173	3,679	2,177,805	81,264	2,259,069	592	11
December	4,128	3,605	2,177,417	87,363	2,264,780	604	12
ytd			\$ 31,439,243	1,083,551	\$32,522,794	7616	101
2014/2013 Δ	\$90	(\$242)	\$ (134,397)	(53,265)	\$ (187,662)	(203)	(16)

Monthly Revenue per Assignment 2013 - 2017  
Calendar Year



Calendar Year Timeframe Comparison  
Jan 2014 - December 2017

JANUARY 2016 - 2013												
	Jan-17	YTD		Jan-16	YTD	ytd	Jan-15	YTD	ytd	Jan-14	YTD	ytd
Revenue (w/o transportation) M/YTD	\$2,488,326	\$2,488,326	1.8%	\$2,443,846	\$2,443,846	11.0%	\$2,202,588	\$2,202,588	-13.8%	\$2,554,575	\$2,554,575	2.4%
Assignments M / YTD	606	606	0.2%	605	605	4.9%	577	577	-9.7%	639	639	-3.5%
Revenue per assignment - M/YTD	\$4,106	\$4,106	1.7%	\$4,039	\$4,039	5.8%	\$3,817	\$3,817	-4.5%	\$3,998	\$3,998	6.1%
Vessel Moves	594	594	0.8%	589	589	4.1%	566	566	-10.3%	631	631	-2.0%
Revenue per vessel move - M/YTD	\$4,189	\$4,189	1.0%	\$4,149	\$4,149	6.6%	\$3,891	\$3,891	-3.9%	\$4,048	\$4,048	4.6%
Tonnage Revenue - M/YTD	\$1,456,699	\$1,456,699	9.6%	\$1,329,440	\$1,329,440	9.3%	\$1,216,397	\$1,216,397	-17.7%	\$1,478,353	\$1,478,353	3.6%
Tonnage Revenue per move	\$2,452	\$2,452	8.7%	\$2,257	\$2,257	5.0%	\$2,149	\$2,149	-8.3%	\$2,343	\$2,343	5.7%
FEBRUARY 2016 - 2013												
	Feb-17	YTD		Feb-16	YTD		Feb-15	YTD		Feb-14	YTD	
Revenue (w/o transportation) M/YTD				\$2,269,624	\$4,713,470	11.5%	\$2,024,842	\$4,227,430	-12.2%	\$2,261,575	\$4,816,150	2.0%
Assignments M / YTD				547	1,152	5.3%	517	1,094	-10.5%	583	1,222	-1.5%
Revenue per assignment - M/YTD				\$4,149	\$4,092	5.9%	\$3,917	\$3,864	-2.0%	\$3,879	\$3,941	3.5%
Vessel Moves				538	1127	5.6%	501	1067	-11.3%	572	1203	-0.7%
Revenue per vessel move - M/YTD				\$4,219	\$4,182	5.6%	\$4,042	\$3,962	-1.0%	\$3,954	\$4,003	2.6%
Tonnage Revenue - M/YTD				\$1,296,111	\$2,625,551	11.8%	\$1,132,850	\$2,349,247	-15.8%	\$1,311,311	\$2,789,664	2.9%
Tonnage Revenue per move				\$2,409	\$2,330	5.8%	\$2,261	\$2,202	-5.1%	\$2,293	\$2,319	3.5%
MARCH 2016 - 2013												
	Mar-17	YTD		Mar-16	YTD		Mar-15	YTD		Mar-14	YTD	
Revenue (w/o transportation) M/YTD				\$2,419,890	\$7,133,360	8.2%	\$2,365,096	\$6,592,526	-8.7%	\$2,403,969	\$7,220,119	2.6%
Assignments M / YTD				607	1,759	1.5%	639	1,733	-6.1%	623	1,845	-0.9%
Revenue per assignment - M/YTD				\$3,987	\$4,055	6.6%	\$3,701	\$3,804	-2.8%	\$3,859	\$3,913	3.6%
Vessel Moves				591	1718	1.7%	622	1689	-7.2%	617	1820	7.9%
Revenue per vessel move - M/YTD				\$4,095	\$4,152	6.4%	\$3,802	\$3,903	-1.6%	\$3,896	\$3,967	-4.9%
Tonnage Revenue - M/YTD				\$1,345,308	\$3,970,859	9.9%	\$1,263,220	\$3,612,467	-13.6%	\$1,391,531	\$4,181,195	3.9%
Tonnage Revenue per move				\$2,276	\$2,311	8.1%	\$2,031	\$2,139	-6.9%	\$2,255	\$2,297	-3.8%
APRIL 2016 - 2013												
	Apr-17	YTD		Apr-16	YTD		Apr-15	YTD		Apr-14	YTD	
Revenue (w/o transportation) M/YTD				\$2,350,195	\$9,483,555	8.4%	\$2,153,086	\$8,745,611	-9.7%	\$2,464,091	\$9,684,210	4.7%
Assignments M / YTD				584	2,343	-0.4%	620	2,353	-4.9%	630	2,475	2.2%
Revenue per assignment - M/YTD				\$4,024	\$4,048	8.9%	\$3,473	\$3,717	-5.0%	\$3,911	\$3,913	2.4%
Vessel Moves				573	2291	0.2%	598	2287	-6.3%	621	2441	9.0%
Revenue per vessel move - M/YTD				\$4,102	\$4,139	8.2%	\$3,600	\$3,824	-3.6%	\$3,968	\$3,967	-3.9%
Tonnage Revenue - M/YTD				\$1,322,435	\$5,293,294	12.9%	\$1,074,585	\$4,687,052	-16.7%	\$1,444,248	\$5,625,443	5.5%
Tonnage Revenue per move				\$2,308	\$2,310	12.7%	\$1,797	\$2,049	-11.1%	\$2,326	\$2,305	-3.1%
MAY 2016 - 2013												
	May-17	YTD		May-16	YTD		May-15	YTD		May-14	YTD	
Revenue (w/o transportation) M/YTD				\$3,039,515	\$12,523,070	7.0%	\$2,959,296	\$11,704,907	-8.0%	\$3,036,561	\$12,720,771	5.4%
Assignments M / YTD				672	3,015	-3.6%	774	3,127	-0.6%	671	3,146	2.0%
Revenue per assignment - M/YTD				\$4,523	\$4,154	11.0%	\$3,823	\$3,743	-7.4%	\$4,525	\$4,043	3.3%
Vessel Moves				665	2956	-3.0%	760	3047	-1.9%	664	3105	7.4%
Revenue per vessel move - M/YTD				\$4,571	\$4,236	10.3%	\$3,894	\$3,841	-6.2%	\$4,573	\$4,097	-1.8%
Tonnage Revenue - M/YTD				\$1,832,625	\$7,125,919	14.0%	\$1,566,491	\$6,253,543	-16.9%	\$1,896,847	\$7,522,290	6.7%
Tonnage Revenue per move				\$2,756	\$2,411	17.5%	\$2,061	\$2,052	-15.3%	\$2,857	\$2,423	-0.6%
JUNE 2016 - 2013												
	Jun-17	YTD		Jun-16	YTD		Jun-15	YTD		Jun-14	YTD	
Revenue (w/o transportation) M/YTD				\$3,215,179	\$15,738,249	5.5%	\$3,210,995	\$14,915,902	-5.3%	\$3,033,723	\$15,754,494	4.4%
Assignments M / YTD				725	3,740	-4.5%	791	3,918	2.1%	690	3,836	2.0%
Revenue per assignment - M/YTD				\$4,435	\$4,208	10.5%	\$4,059	\$3,807	-7.3%	\$4,397	\$4,107	2.3%
Vessel Moves				710	3666	-3.9%	769	3816	0.8%	682	3787	6.2%
Revenue per vessel move - M/YTD				\$4,528	\$4,293	9.8%	\$4,176	\$3,909	-6.0%	\$4,448	\$4,160	-1.8%
Tonnage Revenue - M/YTD				\$1,923,132	\$9,049,051	12.1%	\$1,816,296	\$8,069,839	-14.2%	\$1,888,492	\$9,410,782	5.0%
Tonnage Revenue per move				\$2,709	\$2,468	16.7%	\$2,362	\$2,115	-14.9%	\$2,769	\$2,485	-1.1%
JULY 2016 - 2013												
	Jul-17	YTD		Jul-16	YTD		Jul-15	YTD		Jul-14	YTD	
Revenue (w/o transportation) M/YTD				\$3,320,803	\$19,059,052	6.6%	\$2,960,243	\$17,876,145	-4.8%	\$3,024,434	\$18,778,928	3.5%
Assignments M / YTD				694	4,434	-2.5%	632	4,550	1.1%	663	4,499	0.5%
Revenue per assignment - M/YTD				\$4,785	\$4,298	9.4%	\$4,684	\$3,929	-5.9%	\$4,562	\$4,174	3.0%
Vessel Moves				689	4355	-1.8%	621	4437	-0.1%	655	4442	4.0%
Revenue per vessel move - M/YTD				\$4,820	\$4,376	8.6%	\$4,767	\$4,029	-4.7%	\$4,617	\$4,228	-0.5%
Tonnage Revenue - M/YTD				\$2,062,503	\$11,111,554	12.7%	\$1,793,733	\$9,863,572	-12.8%	\$1,894,514	\$11,305,296	4.1%
Tonnage Revenue per move				\$2,993	\$2,551	14.8%	\$2,888	\$2,223	-12.7%	\$2,892	\$2,545	0.1%
AUGUST 2016 - 2013												
	Aug-17	YTD		Aug-16	YTD		Aug-15	YTD		Aug-14	YTD	
Revenue (w/o transportation) M/YTD				\$3,261,886	\$22,320,938	5.4%	\$3,291,439	\$21,167,584	-3.8%	\$3,219,532	\$21,998,460	3.5%
Assignments M / YTD				686	5,120	-2.3%	693	5,243	1.1%	685	5,184	0.0%
Revenue per assignment - M/YTD				\$4,755	\$4,360	8.0%	\$4,750	\$4,037	-4.9%	\$4,700	\$4,244	3.5%
Vessel Moves				681	5036	-1.7%	684	5121	0.0%	677	5119	3.1%
Revenue per vessel move - M/YTD				\$4,790	\$4,432	7.2%	\$4,812	\$4,133	-3.8%	\$4,756	\$4,297	0.4%
Tonnage Revenue - M/YTD				\$2,012,001	\$13,123,555	10.5%	\$2,008,943	\$11,872,515	-11.2%	\$2,071,239	\$13,376,535	4.3%
Tonnage Revenue per move				\$2,954	\$2,606	12.4%	\$2,937	\$2,318	-11.3%	\$3,059	\$2,613	1.2%
SEPTEMBER 2016 - 2013												
	Sep-17	YTD		Sep-16	YTD		Sep-15	YTD		Sep-14	YTD	
Revenue (w/o transportation) M/YTD				\$3,019,483	\$25,340,421	5.9%	\$2,756,533	\$23,924,117	-3.0%	\$2,655,500	\$24,653,960	2.2%
Assignments M / YTD				653	5,773	-1.2%	601	5,844	1.1%	597	5,781	-1.0%
Revenue per assignment - M/YTD				\$4,624	\$4,389	7.2%	\$4,587	\$4,094	-4.0%	\$4,448	\$4,265	3.3%
Vessel Moves				650	5686	-0.4%	590	5711	0.0%	592	5711	1.7%
Revenue per vessel move - M/YTD				\$4,645	\$4,457	6.4%	\$4,672	\$4,189	-3.0%	\$4,486	\$4,317	0.5%
Tonnage Revenue - M/YTD				\$1,849,337	\$14,972,892	10.7%	\$1,655,487	\$13,528,001	-9.8%	\$1,628,467	\$15,005,002	3.0%
Tonnage Revenue per move				\$2,845	\$2,633	11.2%	\$2,806	\$2,369	-9.8%	\$2,751	\$2,627	1.3%
OCTOBER 2016 - 2013												
	Oct-17	YTD		Oct-16	YTD		Oct-15	YTD		Oct-14	YTD	
Revenue (w/o transportation) M/YTD				\$2,571,409	\$27,911,830	5.0%	\$2,659,033	\$26,583,150	-1.8%	\$2,430,062	\$27,084,022	1.8%
Assignments M / YTD				617	6,390	-1.8%	666	6,510	1.4%	639	6,420	-1.5%
Revenue per assignment - M/YTD				\$4,168	\$4,368	7.0%	\$3,993	\$4,083	-3.2%	\$3,803	\$4,219	3.4%
Vessel Moves				606	6292	-1.1%	653	6364	0.4%	627	6338	0.8%
Revenue per vessel move - M/YTD				\$4,243	\$4,436	6.2%	\$4,072	\$4,177	-2.3%	\$3,876	\$4,273	1.0%
Tonnage Revenue - M/YTD				\$1,484,111	\$16,457,003	9.9%	\$1,450,149	\$14,978,150	-8.5%	\$1,366,727	\$16,371,729	2.9%
Tonnage Revenue per move				\$2,449	\$2,616	11.1%	\$2,221	\$2,354	-8.9%	\$2,180	\$2,583	2.0%
NOVEMBER 2016 - 2013												
	Nov-17	YTD		Nov-16	YTD		Nov-15	YTD		Nov-14	YTD	
Revenue (w/o transportation) M/YTD				\$2,622,922	\$30,534,752	5.1%	\$2,479,703	\$29,062,853	-0.7%	\$2,177,805	\$29,261,826	0.7%
Assignments M / YTD				661	7,051	-1.4%	644	7,154	2.0%	592	7,012	-2.1%
Revenue per assignment - M/YTD				\$3,968	\$4,331	6.6%	\$3,850	\$4,062	-2.7%	\$3,679	\$4,173	2.9%
Vessel Moves				643	6935	-0.8%	629	6993	1.1%	581	6919	0.0%
Revenue per vessel move - M/YTD				\$4,079	\$4,403	5.9%	\$3,942	\$4,156	-1.7%	\$3,748	\$4,229	0.7%
Tonnage Revenue - M/YTD				\$1,484,173	\$17,941,176	9.9%	\$1,344,787	\$16,322,937	-7.3%	\$1,243,491	\$17,615,219	1.8%
Tonnage Revenue per move				\$2,308	\$2,587	10.8%	\$2,138	\$2,334	-8.3%	\$2,140	\$2,546	1.8%
DECEMBER 2016 - 2013												
	Dec-17	YTD		Dec-16	YTD		Dec-15	YTD		Dec-14	YTD	
Revenue (w/o transportation) M/YTD				\$2,446,187	\$32,980,939	4.1%	\$2,618,146	\$31,680,999	0.8%	\$2,177,417	\$31,439,244	-0.4%
Assignments M / YTD				610	7,661	-1.7%	641	7,795	2.4%	604	7,616	-2.6%
Revenue per assignment - M/YTD				\$4,010	\$4,305							

		DECEMBER 2017							
		Totals	LOA	IntraHbr	≤ 30 mi	≤ 50 mi	≤ 75 mi	≤ 100mi	101+ mi
				1	2	3	4	5	6
12	0	Up to 500							
59	0	500-599							
177	0	600-699							
96	0	700-799							
78	0	800-899							
89	0	900-999							
95	0	1000--							
assignmts	0		0	0	0	0	0	0	0
			606	111	116	56	155	168	0

		DECEMBER 2016							
		Totals	LOA	IntraHbr	≤ 30 mi	≤ 50 mi	≤ 75 mi	≤ 100mi	101+ mi
				1	2	3	4	5	6
310	20	Up to 500	6	4	6	4			
776	44	500-599	8	7	3	17	9		
2056	205	600-699	19	53	48	49	36		
1051	91	700-799	8	26		24	33		
893	68	800-899	10	12	8	20	18		
1433	99	900-999	21	3		33	42		
1044	83	1000--	25	9		31	18		
assignmts	610		97	114	65	178	156	0	0
			7563	1265	1154	737	2337	2070	0

		DECEMBER 2015							
		Totals	LOA	IntraHbr	≤ 30 mi	≤ 50 mi	≤ 75 mi	≤ 100mi	101+ mi
				1	2	3	4	5	6
528	57	Up to 500	31	9	11	5	1		
939	70	500-599	12	17	16	15	8	2	
1829	151	600-699	20	31	34	28	38		
984	86	700-799	17	13	4	20	32		
792	69	800-899	9	7	9	17	27		
1673	122	900-999	19	14	4	36	49		
876	76	1000--	28	9		23	16		
7621	631		136	100	78	144	171	2	
			7621	1427	1038	689	2361	2094	12

		DECEMBER 2014							
		Totals	LOA	IntraHbr	≤ 30 mi	≤ 50 mi	≤ 75 mi	≤ 100mi	101+ mi
				1	2	3	4	5	6
173	13	Up to 500	1	1	2	8	1		
863	84	500-599	19	15	22	16	12		
1896	165	600-699	26	38	32	35	34		
967	75	700-799	15	3		23	34		
1075	79	800-899	9	10	8	22	30		
1581	114	900-999	20	14		47	33		
961	62	1000--	22	12		22	6		
7516	592		112	93	64	173	150	0	
YTD totals			1225	1072	667	2404	2148	0	0

		NOVEMBER 2017							
		Totals	LOA	IntraHbr	≤ 30 mi	≤ 50 mi	≤ 75 mi	≤ 100mi	101+ mi
				1	2	3	4	5	6
12	0								
59	0								
177	0								
96	0								
78	0								
89	0								
95	0								
YTD totals	0		606	111	116	56	155	168	0

		NOVEMBER 2016							
		Totals	LOA	IntraHbr	≤ 30 mi	≤ 50 mi	≤ 75 mi	≤ 100mi	101+ mi
				1	2	3	4	5	6
290	28	Up to 500	0	7	11	9	1	0	
732	69	500-599	10	20	9	21	9	0	
1851	199	600-699	27	49	37	38	48	0	
960	106	700-799	16	18	2	28	42	0	
825	75	800-899	8	15	9	23	20	0	
1334	88	900-999	13	10	5	29	31	0	
961	96	1000--	34	11	0	27	24	0	
assignmts	661		108	130	73	175	175	0	0
YTD totals			6953	1168	1040	672	2159	1914	0

		NOVEMBER 2015							
		Totals	LOA	IntraHbr	≤ 30 mi	≤ 50 mi	≤ 75 mi	≤ 100mi	101+ mi
				1	2	3	4	5	6
471	64	Up to 500	18	10	7	29	0	0	
869	71	500-599	14	16	12	19	10	0	
1678	161	600-699	14	36	35	33	43	0	
898	78	700-799	13	7	2	23	33	0	
723	52	800-899	10	5	5	11	21	0	
1551	115	900-999	19	12	4	34	46	0	
800	88	1000--	29	14	0	28	17	0	
YTD totals	629		117	100	65	177	170	0	0
			6990	1291	938	611	2217	1923	10

		NOVEMBER 2014							
		Totals	LOA	IntraHbr	≤ 30 mi	≤ 50 mi	≤ 75 mi	≤ 100mi	101+ mi
				1	2	3	4	5	6
160	11	Up to 500	1	2	2	6	0	0	
779	71	500-599	26	9	10	14	12	0	
1731	147	600-699	15	30	26	37	39	0	
892	103	700-799	23	11	3	24	42	0	
996	83	800-899	12	14	8	21	28	0	
1467	104	900-999	21	11	1	46	25	0	
899	62	1000--	19	11	0	26	6	0	
YTD totals	581		117	88	50	174	152	0	0
			6924	1113	979	603	2231	1998	0

		OCTOBER 2017							
		Totals	LOA	IntraHbr	≤ 30 mi	≤ 50 mi	≤ 75 mi	≤ 100mi	101+ mi
				1	2	3	4	5	6
12	0	Up to 500							
59	0	500-599							
177	0	600-699							
96	0	700-799							
78	0	800-899							
89	0	900-999							
95	0	1000--							
YTD totals	0		606	111	116	56	155	168	0
YTD Averages			60.6	11.1	11.6	5.6	15.5	16.8	0

		OCTOBER 2016							
		Totals	LOA	IntraHbr	≤ 30 mi	≤ 50 mi	≤ 75 mi	≤ 100mi	101+ mi
				1	2	3	4	5	6
262	35	Up to 500	5	7	10	11	2		
663	45	500-599	7	14	1	13	10		
1652	164	600-699	15	41	38	39	31		
854	105	700-799	13	23	4	27	38		
750	71	800-899	8	13	9	21	20		
1246	96	900-999	18	5	1	29	43		
865	90	1000--	28	10		33	19		
moves	606		94	113	63	173	163	0	0
YTD totals			6292	1060	910	599	1984	1739	0
YTD Averages			629.2	106	91	59.9	198.4	173.9	0

		OCTOBER 2015							
		Totals	LOA	IntraHbr	≤ 30 mi	≤ 50 mi	≤ 75 mi	≤ 100mi	101+ mi
				1	2	3	4	5	6
407	42	Up to 500	10	7	4	21	0	0	
798	89	500-599	25	11	14	23	16	0	
1517	148	600-699	11	34	27	41	35	0	
820	104	700-799	20	10	3	29	42	0	
671	75	800-899	9	8	8	16	34	0	
1436	111	900-999	20	14	8	25	44	0	
712	84	1000--	29	9		27	19	0	
YTD totals	653		124	93	64	182	190	0	0
			6361	1174	838	546	2040	1753	10
YTD Averages			636.1	117.4	83.8	54.6	204	175.3	1

		OCTOBER 2014							
		Totals	LOA	IntraHbr	≤ 30 mi	≤ 50 mi	≤ 75 mi	≤ 100mi	101+ mi
				1	2	3	4	5	6
149	26	Up to 500	7	4	2	13	0	0	
708	70	500-599	10	13	13	22	12	0	
1584	148	600-699	15	29	30	36	38	0	
789	103	700-799	23	6	7	20	47	0	
913	92	800-899	10	17	7	19	39	0	
1363	107	900-999	19	8	1	34	45	0	
837	81	1000--	31	8	0	21	21	0	
YTD totals	627		115	85	60	165	202	0	0
			6343	996	891	553	2057	1846	0
YTD Averages			634.3	99.6	89.1	55.3	205.7	184.6	0

		SEPTEMBER 2017							
		Totals	LOA	IntraHbr	≤ 30 mi	≤ 50 mi	≤ 75 mi	≤ 100mi	101+ mi
				1	2	3	4	5	6
12									

AUGUST 2017								
YTD	Totals	LOA	IntraHbr	≤ 30 mi	≤ 50 mi	≤ 75 mi	≤ 100mi	101+ mi
			1	2	3	4	5	6
12	0	Up to 500						
59	0	500-599						
177	0	600-699						
96	0	700-799						
78	0	800-899						
89	0	900-999						
95	0	1000--						
0	0	0	0	0	0	0	0	0
YTD totals	606		111	116	56	155	168	0
YTD Averages	75.8		13.9	14.5	7.0	19.4	21.0	0.0

AUGUST 2016								
YTD	Totals	LOA	IntraHbr	≤ 30 mi	≤ 50 mi	≤ 75 mi	≤ 100mi	101+ mi
			1	2	3	4	5	6
195	39	Up to 500	11	8	11	7	2	
569	73	500-599	23	8	3	27	12	
1330	153	600-699	12	29	31	35	46	
646	97	700-799	7	19	3	24	44	
605	65	800-899	7	9	5	25	19	
1005	155	900-999	18	6	3	89	39	
686	99	1000--	28	9		40	22	
moves	681		106	88	56	247	184	0
YTD totals	5036		851	717	468	1597	1403	0
YTD Averages	629.5		106.4	89.6	58.5	199.6	175.4	0.0

AUGUST 2015								
YTD	Totals	LOA	IntraHbr	≤ 30 mi	≤ 50 mi	≤ 75 mi	≤ 100mi	101+ mi
			1	2	3	4	5	6
348	19	Up to 500	5	4	4	6	0	0
633	88	500-599	25	10	14	26	13	0
1230	154	600-699	15	24	28	34	53	0
650	79	700-799	7	9	5	30	28	0
545	69	800-899	13	7	7	17	25	0
1169	182	900-999	22	8	1	100	51	0
543	93	1000--	30	10	0	34	19	0
684			117	72	59	247	189	0
YTD totals	5118		963	668	430	1650	1397	10
YTD Averages	639.8		120.4	83.5	53.8	206.3	174.6	1.3

AUGUST 2014								
YTD	Totals	LOA	IntraHbr	≤ 30 mi	≤ 50 mi	≤ 75 mi	≤ 100mi	101+ mi
			1	2	3	4	5	6
112	22	Up to 500	6	4	3	7	2	0
566	66	500-599	18	11	10	12	15	0
1296	147	600-699	12	27	35	34	39	0
629	70	700-799	8	4	3	21	34	0
718	97	800-899	9	23	12	20	33	0
1126	180	900-999	18	11	2	104	45	0
677	96	1000--	30	10	0	36	20	0
678			101	90	65	234	188	0
YTD totals	5124		808	724	429	1689	1474	0
YTD Averages	640.5		101	91	54	211	184	0

JULY 2017								
YTD	Totals	LOA	IntraHbr	≤ 30 mi	≤ 50 mi	≤ 75 mi	≤ 100mi	101+ mi
			1	2	3	4	5	6
12	0	Up to 500						
59	0	500-599						
177	0	600-699						
96	0	700-799						
78	0	800-899						
89	0	900-999						
95	0	1000--						
0	0	0	0	0	0	0	0	0
YTD totals	606		111	116	56	155	168	0
YTD Averages	86.6		15.9	16.6	8.0	22.1	24.0	0.0

JULY 2016								
YTD	Totals	LOA	IntraHbr	≤ 30 mi	≤ 50 mi	≤ 75 mi	≤ 100mi	101+ mi
			1	2	3	4	5	6
156	28	Up to 500	2	4	11	4	7	
496	102	500-599	8	9	3	21	61	
1177	148	600-699	15	35	28	40	30	
549	90	700-799	14	7	5	44	20	
540	104	800-899	12	12	9	30	41	
850	142	900-999	22	8	2	89	21	
587	75	1000--	25	7		43		
moves	689		98	82	58	271	180	0
YTD totals	4355		745	629	412	1350	1219	0
YTD Averages	622.1		106.4	89.9	58.9	192.9	174.1	0.0

JULY 2015								
YTD	Totals	LOA	IntraHbr	≤ 30 mi	≤ 50 mi	≤ 75 mi	≤ 100mi	101+ mi
			1	2	3	4	5	6
329	22	Up to 500	4	3	2	13	0	
545	68	500-599	19	4	12	21	12	
1076	145	600-699	16	29	31	30	39	
571	64	700-799	3	4	3	27	27	
476	63	800-899	9	6	6	13	29	
987	176	900-999	19	14	2	95	46	
450	83	1000--	25	10	0	32	16	
621			95	70	56	231	169	0
YTD totals	4434		846	596	371	1403	1208	10
YTD Averages	633.4		120.9	85.1	53.0	200.4	172.6	1.4

JULY 2014								
YTD	Totals	LOA	IntraHbr	≤ 30 mi	≤ 50 mi	≤ 75 mi	≤ 100mi	101+ mi
			1	2	3	4	5	6
90	11	Up to 500	2		1	6	2	
500	78	500-599	13	16	13	28	8	
1149	147	600-699	11	29	27	53	27	
559	83	700-799	16	4	2	20	41	
621	78	800-899	4	11	7	20	36	
946	173	900-999	18	13	2	95	45	
581	88	1000--	29	8		31	20	
658			93	81	52	253	179	0
YTD totals	4446		707	634	364	1455	1286	0
YTD Averages	635.1		101.0	90.6	52.0	207.9	183.7	0.0

JUNE 2017								
YTD	Totals	LOA	IntraHbr	≤ 30 mi	≤ 50 mi	≤ 75 mi	≤ 100mi	101+ mi
			1	2	3	4	5	6
12	0	Up to 500						
59	0	500-599						
177	0	600-699						
96	0	700-799						
78	0	800-899						
89	0	900-999						
95	0	1000--						
0	0	0	0	0	0	0	0	0
YTD totals	606		111	116	56	155	168	0
YTD Averages	101.0		18.5	19.3	9.3	25.8	28.0	0.0

JUNE 2016								
YTD	Totals	LOA	IntraHbr	≤ 30 mi	≤ 50 mi	≤ 75 mi	≤ 100mi	101+ mi
			1	2	3	4	5	6
128	39	Up to 500	7	7	11	13	1	
394	67	500-599	20	11	4	25	7	
1029	194	600-699	25	43	37	39	50	
459	87	700-799	11	4	3	31	38	
436	77	800-899	9	12	8	26	22	
708	152	900-999	24	7	2	78	41	
512	94	1000--	25	9		42	18	
moves	710		121	93	65	254	177	0
YTD totals	3666		647	547	354	1079	1039	0
YTD Averages	611.0		107.8	91.2	59.0	179.8	173.2	0.0

JUNE 2015								
YTD	Totals	LOA	IntraHbr	≤ 30 mi	≤ 50 mi	≤ 75 mi	≤ 100mi	101+ mi
			1	2	3	4	5	6
307	73	Up to 500	36	10	6	21	0	
477	108	500-599	23	25	12	35	13	
931	184	600-699	25	33	32	31	63	
507	93	700-799	11	13	6	28	35	
413	60	800-899	11	5	7	13	24	
811	166	900-999	18	13	2	88	45	
367	87	1000--	28	9		33	17	
771			152	108	65	249	197	0
YTD totals	3813		751	526	315	1172	1039	10
YTD Averages	635.5		125.2	87.7	52.5	195.3	173.2	1.7

JUNE 2014								
YTD	Totals	LOA	IntraHbr	≤ 30 mi	≤ 50 mi	≤ 75 mi	≤ 100mi	101+ mi
			1	2	3	4	5	6
79	25	Up to 500	5	3	2	14	1	
422	86	500-599	16	12	13	30	15	
1002	160	600-699	16	32	33	45	34	
476	71	700-799	9	4	2	22	34	
543	83	800-899	8	17	9	20	29	
773	174	900-999	19	7	2	97	49	
493	83	1000--	26	7		32	18	
682			99	82	61	260	180	0
YTD totals	3788		614	553	312	1202	1107	0
YTD Averages	631.3		102.3	92.2	52.0	200.3	184.5	0.0

MAY 2017								
YTD	Totals	LOA	IntraHbr	≤ 30 mi	≤ 50 mi	≤ 75 mi	≤ 100mi	101+ mi
			1	2	3	4	5	6
12	0	Up to 500						
59	0	500-599						
177	0	600-699						
96	0	700-799						
78	0	800-899						
89	0	900-999						
95	0	1000--						
0	0	0	0	0	0	0	0	0
YTD totals	606		111	116	56	155	168	0
YTD Averages	121.2		22.2	23.2	11.2	31	33.6	0

MAY 2016								
YTD	Totals	LOA	IntraHbr	≤ 30 mi	≤ 50 mi	≤ 75 mi	≤ 100mi	101+ mi
			1	2	3	4	5	6
89	26	Up to 500	3	5	6	11	1	0
327	74	500-599	20	15	4	26	9	0
835	175	600-699	18	41	37	34	45	0
372	69	700-799	7	9	5	18	30	0
359	83	800-899	9	12	8	28	26	0



		APRIL 2017							
YTD	Totals	LOA	IntraHbr	≤ 30 mi	≤ 50 mi	≤ 75 mi	≤ 100mi	101+ mi	
			1	2	3	4	5	6	
12	0	Up to 500							
59	0	500-599							
177	0	600-699							
96	0	700-799							
78	0	800-899							
89	0	900-999							
95	0	1000--							
0	0		0	0	0	0	0	0	0
<b>YTD totals</b>	<b>606</b>	<b>111</b>	<b>116</b>	<b>56</b>	<b>155</b>	<b>168</b>	<b>0</b>		
<b>YTD Averages</b>	<b>151.5</b>	<b>27.8</b>	<b>29.0</b>	<b>14.0</b>	<b>38.8</b>	<b>42.0</b>	<b>0.0</b>		

		APRIL 2016							
YTD	Totals	LOA	IntraHbr	≤ 30 mi	≤ 50 mi	≤ 75 mi	≤ 100mi	101+ mi	
			1	2	3	4	5	6	
63	28	Up to 500	11	3	8	6	0	0	
253	55	500-599	19	6	3	17	10	0	
660	168	600-699	17	35	44	34	38	0	
303	69	700-799	6	12	1	18	32	0	
276	72	800-899	11	7	8	22	24	0	
414	104	900-999	17	8	0	33	46	0	
322	77	1000--	26	8	0	25	18	0	
moves	573		107	79	64	155	168	0	
<b>YTD totals</b>	<b>2291</b>	<b>421</b>	<b>357</b>	<b>226</b>	<b>601</b>	<b>686</b>	<b>0</b>		
<b>YTD Averages</b>	<b>572.8</b>	<b>105.3</b>	<b>89.3</b>	<b>56.5</b>	<b>150.3</b>	<b>171.5</b>	<b>0.0</b>		

		APRIL 2015							
YTD	Totals	LOA	IntraHbr	≤ 30 mi	≤ 50 mi	≤ 75 mi	≤ 100mi	101+ mi	
			1	2	3	4	5	6	
117	39	Up to 500	20	6	3	10	0	0	
278	99	500-599	29	15	14	30	11	0	
570	157	600-699	19	26	31	34	47	0	
341	75	700-799	10	4	4	19	38	0	
276	69	800-899	9	7	7	20	26	0	
491	107	900-999	20	2	0	47	38	0	
209	52	1000--	20	0	0	14	18	0	
598			127	60	59	174	178	0	
<b>YTD totals</b>	<b>2282</b>	<b>421</b>	<b>326</b>	<b>200</b>	<b>685</b>	<b>645</b>	<b>5</b>		
<b>YTD Averages</b>	<b>570.5</b>	<b>105.3</b>	<b>81.5</b>	<b>50.0</b>	<b>171.3</b>	<b>161.3</b>	<b>1.3</b>		

		APRIL 2014							
YTD	Totals	LOA	IntraHbr	≤ 30 mi	≤ 50 mi	≤ 75 mi	≤ 100mi	101+ mi	
			1	2	3	4	5	6	
32	7	Up to 500	0	1	0	2	4	0	
263	62	500-599	15	8	6	25	8	0	
693	198	600-699	31	41	30	57	39	0	
331	77	700-799	15	0	2	19	41	0	
381	88	800-899	4	19	7	29	29	0	
422	109	900-999	16	10	1	40	42	0	
319	80	1000--	28	4	2	22	24	0	
621			109	83	48	194	187	0	
<b>YTD totals</b>	<b>2441</b>	<b>422</b>	<b>377</b>	<b>203</b>	<b>695</b>	<b>744</b>	<b>0</b>		
<b>YTD Averages</b>	<b>610.3</b>	<b>105.5</b>	<b>94.3</b>	<b>50.8</b>	<b>173.8</b>	<b>186.0</b>	<b>0.0</b>		

		MARCH 2017							
YTD	Totals	LOA	IntraHbr	≤ 30 mi	≤ 50 mi	≤ 75 mi	≤ 100mi	101+ mi	
			1	2	3	4	5	6	
12	0	Up to 500							
59	0	500-599							
177	0	600-699							
96	0	700-799							
78	0	800-899							
89	0	900-999							
95	0	1000--							
0	0		0	0	0	0	0	0	0
<b>2016 YTD totals</b>	<b>606</b>	<b>111</b>	<b>116</b>	<b>56</b>	<b>155</b>	<b>168</b>	<b>0</b>		
<b>YTD Averages</b>	<b>202.0</b>	<b>37.0</b>	<b>38.7</b>	<b>18.7</b>	<b>51.7</b>	<b>56.0</b>	<b>0.0</b>		

		MARCH 2016							
YTD	Totals	LOA	IntraHbr	≤ 30 mi	≤ 50 mi	≤ 75 mi	≤ 100mi	101+ mi	
			1	2	3	4	5	6	
35	15	Up to 500	1	4	8	2	0	0	
198	65	500-599	15	11	2	28	9	0	
492	176	600-699	20	38	35	35	48	0	
234	71	700-799	7	13	1	14	36	0	
204	78	800-899	9	11	10	18	30	0	
310	106	900-999	21	6	2	29	48	0	
245	80	1000--	29	9	0	24	18	0	
moves	591		102	92	58	150	189	0	
<b>2016 YTD totals</b>	<b>1718</b>	<b>314</b>	<b>278</b>	<b>162</b>	<b>446</b>	<b>518</b>	<b>0</b>		
<b>YTD Averages</b>	<b>572.7</b>	<b>104.7</b>	<b>92.7</b>	<b>54.0</b>	<b>148.7</b>	<b>172.7</b>	<b>0.0</b>		

		MARCH 2015							
YTD	Totals	LOA	IntraHbr	≤ 30 mi	≤ 50 mi	≤ 75 mi	≤ 100mi	101+ mi	
			1	2	3	4	5	6	
78	51	Up to 500	27	6	8	10	0	0	
179	68	500-599	21	6	10	19	12	0	
413	149	600-699	23	33	20	32	41	0	
266	89	700-799	19	3	3	19	45	0	
207	75	800-899	7	8	5	22	33	0	
384	130	900-999	23	24	4	44	35	0	
157	59	1000--	19	5		22	13	0	
621			139	85	50	168	179	0	
<b>2015 YTD totals</b>	<b>1684</b>	<b>294</b>	<b>266</b>	<b>141</b>	<b>511</b>	<b>467</b>	<b>5</b>		
<b>YTD Averages</b>	<b>561.3</b>	<b>98.0</b>	<b>88.7</b>	<b>47.0</b>	<b>170.3</b>	<b>155.7</b>	<b>1.7</b>		

		MARCH 2014							
YTD	Totals	LOA	IntraHbr	≤ 30 mi	≤ 50 mi	≤ 75 mi	≤ 100mi	101+ mi	
			1	2	3	4	5	6	
25	4	Up to 500	1	1	0	2	0	0	
201	68	500-599	13	15	4	25	11	0	
495	174	600-699	22	37	30	48	37	0	
254	87	700-799	19	7	2	19	40	0	
293	100	800-899	6	21	10	28	35	0	
313	104	900-999	15	15	1	32	41	0	
239	80	1000--	30	3	0	24	23	0	
617			106	99	47	178	187	0	
<b>2014 YTD totals</b>	<b>1820</b>	<b>313</b>	<b>294</b>	<b>155</b>	<b>501</b>	<b>557</b>	<b>0</b>		
<b>YTD Averages</b>	<b>606.7</b>	<b>104.3</b>	<b>98.0</b>	<b>51.7</b>	<b>167.0</b>	<b>185.7</b>	<b>0.0</b>		

		FEBRUARY 2017							
YTD	Totals	LOA	IntraHbr	≤ 30 mi	≤ 50 mi	≤ 75 mi	≤ 100mi	101+ mi	
			1	2	3	4	5	6	
12	0	Up to 500							
59	0	500-599							
177	0	600-699							
96	0	700-799							
78	0	800-899							
89	0	900-999							
95	0	1000--							
0	0		0	0	0	0	0	0	0
<b>YTD totals</b>	<b>606</b>	<b>111</b>	<b>116</b>	<b>56</b>	<b>155</b>	<b>168</b>	<b>0</b>		
<b>YTD Averages</b>	<b>303.0</b>	<b>55.5</b>	<b>58.0</b>	<b>28.0</b>	<b>77.5</b>	<b>84.0</b>	<b>0.0</b>		

		FEBRUARY 2016							
YTD	Totals	LOA	IntraHbr	≤ 30 mi	≤ 50 mi	≤ 75 mi	≤ 100mi	101+ mi	
			1	2	3	4	5	6	
20	6	Up to 500	2	0	4	0	0		
133	65	500-599	18	20	3	15	9		
316	153	600-699	14	39	28	30	42		
163	75	700-799	5	17	2	20	31		
126	62	800-899	7	13	5	15	22		
204	101	900-999	21	3	1	31	45		
165	76	1000--	24	10		28	14		
moves	538		91	102	43	139	163	0	
<b>YTD totals</b>	<b>1127</b>	<b>212</b>	<b>186</b>	<b>104</b>	<b>296</b>	<b>329</b>	<b>0</b>		
<b>YTD Averages</b>	<b>563.5</b>	<b>106.0</b>	<b>93.0</b>	<b>52.0</b>	<b>148.0</b>	<b>164.5</b>	<b>0.0</b>		

		FEBRUARY 2015							
YTD	Totals	LOA	IntraHbr	≤ 30 mi	≤ 50 mi	≤ 75 mi	≤ 100mi	101+ mi	
			1	2	3	4	5	6	
27	10	Up to 500	4		1	5			
111	49	500-599	10	10	12	12	5		
264	121	600-699	7	24	15	36	38	1	
177	88	700-799	16	10	4	19	39		
132	66	800-899	1	15	4	15	31		
254	124	900-999	20	22	4	52	24	2	
98	39	1000--	9	7		15	7	1	
497			67	88	40	154	144	4	
<b>YTD totals</b>	<b>1063</b>	<b>155</b>	<b>181</b>	<b>91</b>	<b>343</b>	<b>288</b>	<b>5</b>		
<b>YTD Averages</b>	<b>531.5</b>	<b>77.5</b>	<b>90.5</b>	<b>45.5</b>	<b>171.5</b>	<b>144.0</b>	<b>2.5</b>		

		FEBRUARY 2014							
YTD	Totals	LOA	IntraHbr	≤ 30 mi	≤ 50 mi	≤ 75 mi	≤ 100mi	101+ mi	
			1	2	3	4	5	6	
21	12	Up to 500	2	1	3	6			
133	54	500-599	12	4	9	14	15		
321	167	600-699	14	51	29	44	29		
167	79	700-799	17	7	2	15	38		
193	95	800-899	7	23	9	20	36		
209	87	900-999	11	9		36	31		
159	78	1000--	31	4		20	23		
572			94	99	52	155	172	0	
<b>YTD totals</b>	<b>1203</b>	<b>207</b>	<b>195</b>	<b>108</b>	<b>323</b>	<b>370</b>	<b>0</b>		
<b>YTD Averages</b>	<b>6</b>								

2017	Moves YTD	Moves/ Month	SHIP MOVES BY ZONE/DISTANCE						SHIP MOVES BY TYPE												
			IntraHbr	≤30 mi	≤50 mi	≤75 mi	≤100mi	101+ mi	Car										Totals		
			1	2	3	4	5	6	Bulker	Carrier	Container	General	Naval	Other	Passngr	Reefer	Ro-Ro	Tanker			
Jan		606	111	116	56	155	168	0	114	43	222	11	5	4	1	0	17	189	606	assignments	
		606	111	116	56	155	168	0	114	43	222	11	5	4	1	0	17	189			
2016	Moves YTD	Moves/ Month	SHIP MOVES BY ZONE/DISTANCE						SHIP MOVES BY TYPE												
			IntraHbr	≤30 mi	≤50 mi	≤75 mi	≤100mi	101+ mi	Car										Totals		
			1	2	3	4	5	6	Bulker	Carrier	Container	General	Naval	Other	Passngr	Reefer	Ro-Ro	Tanker			
Jan		589	121	84	61	157	166	0	88	39	232	14	4	1	1		19	191	589		
Feb	1,127	538	91	102	43	139	163	0	90	45	212	7			2		18	164	538	moves	
Mar	1,718	591	102	92	58	150	189	0	97	52	236	8	0	1	0	0	20	177	591	moves	
Apr	2,291	573	107	79	64	155	168	0	70	41	216	8	0	11	2	0	25	200	573	moves	
May	2,956	665	105	97	63	224	176		85	41	235	9	0	21	64	0	18	199	672	assignments	
June	3,666	710	121	93	65	254	177	0	101	42	221	17	0	11	84	7	29	198	710	moves	
July	4,355	689	98	82	58	271	180	0	87	48	224	8	0	3	97	4	20	203	694	assignments	
Aug	5,036	681	106	88	56	247	184		105	39	229	17	1	15	85	0	21	169	681	moves	
Sept	5,686	650	115	80	68	214	173		105	40	221	9		12	71		19	176	653	assignments	
Oct	6,292	606	94	113	63	173	163		100	38	224	8		4	12	2	23	195	606	moves	
Nov	6,953	661	108	130	73	175	175	0	137	43	214	11	2	1	0	5	20	228	661	assignments	
Dec	7,563	610	97	114	65	178	156		117	42	220	12	4			3	21	191	610	assignments	
		7563	1265	1154	737	2337	2070	0	1182	510	2684	128	11	80	418	21	253	2291	7578	not accurate d	
@ Nov 2015/2016 ytd Δ		(64)	(162)	116	48	(24)	(24)	(12)	234	(31)	(48)	(33)	1	(350)	29	13	0	136	(49)	inconsistent movi	
2015	Moves YTD	Moves/ Month	SHIP MOVES BY ZONE/DISTANCE						SHIP MOVES BY TYPE												
			IntraHbr	≤30 mi	≤50 mi	≤75 mi	≤100mi	101+ mi	Car										Move Totals		
			1	2	3	4	5	6	Bulker	Carrier	Container	General	Naval	Other	Passngr	Reefer	Ro-Ro	Tanker			
Jan		566	88	93	51	189	144	1	102	35	219	23		4	1		18	164	566	moves	
Feb	1,067	501	67	88	40	154	144	4	70	43	209	5		7	1		21	145	501	moves	
Mar	1,690	623	139	85	50	168	179	0	120	45	234	14	1	38			23	148	623	moves	
Apr	2,288	598	127	60	59	174	178	0	78	43	224	16	1	37			24	175	598	moves	
May	3,048	760	178	92	50	238	197	5	76	54	232	23	1	103	62	2	20	187	760	moves	
June	3,819	771	152	108	65	249	197	0	70	67	232	6	3	71	86	2	21	213	771	moves	
July	4,440	621	95	70	56	231	169	0	39	50	225	19	4	6	86		19	173	621	moves	
Aug	5,124	684	117	72	59	247	189	0	68	47	241	2		11	90		19	206	684	moves	
Sept	5,714	590	87	77	52	208	166	0	46	37	218	25		3	63		24	174	590	moves	
Oct	6,367	653	124	93	64	182	190		123	40	230	12		26		3	23	196	653	moves	
Nov	6,996	629	117	100	65	177	170	0	85	38	237	7		57		1	19	185	629	moves	
Dec	7,627	631	136	100	78	144	171	2	71	42	231	9		67			22	189	631	moves	
		7627	1427	1038	689	2361	2094	12	948	541	2732	161	10	430	389	8	253	2155	7627	moves	
2014/2015 ytd Δ		111	202	(34)	22	(43)	(54)	12	(104)	17	(70)	(19)	(2)	382	20	(8)	(9)	(96)	111		
2014	Moves YTD	Moves/ Month	SHIP MOVES BY ZONE/DISTANCE						SHIP MOVES BY TYPE												
			IntraHbr	≤30 mi	≤50 mi	≤75 mi	≤100mi	101+ mi	Car										Totals		
			1	2	3	4	5	6	Bulker	Carrier	Container	General	Naval	Other	Passngr	Reefer	Ro-Ro	Tanker			
Jan		631	113	96	56	168	198	0	93	51	252	16		2	1		21	195	631	moves	
Feb	1,203	572	94	99	52	155	172	0	113	39	212	5	2	3	1		20	177	572	moves	
Mar	1,820	617	106	99	47	178	187	0	92	47	239	16		2			23	198	617	moves	
Apr	2,441	621	109	83	48	194	187	0	112	48	242	16		2			22	179	621	moves	
May	3,106	665	93	94	48	247	183	0	67	43	257	19	2	8	61		23	185	665	moves	
June	3,788	682	99	82	61	260	180	0	73	46	227	25		2	85	2	20	202	682	moves	
July	4,446	658	93	81	52	253	179	0	79	41	240	10	3	1	82		25	177	658	moves	
Aug	5,124	678	101	90	65	234	188	0	66	41	236	19	3	8	85		19	201	678	moves	
Sept	5,716	592	73	82	64	203	170	0	48	29	218	10		8	54	1	27	197	592	moves	
Oct	6,343	627	115	85	60	165	202	0	93	43	242	18		8			9	23	191	627	moves
Nov	6,924	581	117	88	50	174	152		126	44	206	6		1		4	18	176	581	moves	
Dec	7,516	592	112	93	64	173	150	0	90	52	231	20	2	3			21	173	592	moves	
		7516	1225	1072	667	2404	2148	0	1052	524	2802	180	12	48	369	16	262	2251	7516	moves	
2013/2014 ytd Δ	(186)	(186)	79	(54)	25	(202)	(31)	(2)	133	(8)	(91)	6	0	(69)	(8)	5	2	(156)	(186)		

2017	Bulker	#	Car Carrier	#	Container	#	General	#	Naval	#	Other	#	Passenger	#	Reefer	#	Ro-Ro	#	Tanker	#	ATB & % of Month	Total Tonnage	#	
January	3,714,611	114	2,601,920	43	16,151,197	222	25,203	11	227,040	5	54,307	4	5,841	1	-	#	676,105	17	8,234,270	189	48	25%	31,690,494	606
Average	3,714,611	114	2,601,920	43	16,151,197	222	25,203	11	227,040	5	54,307	4	5,841	1	-	0	676,105	17	8,234,270	189			31,690,494	606
	32,584		60,510		72,753		2,291		45,408		13,577		5,841		#DIV/0!		39,771		43,568				52,295	

assignments

2016	Bulker	#	Car Carrier	#	Container	#	General	#	Naval	#	Other	#	Passenger	#	Reefer	#	Ro-Ro	#	Tanker	#	ATB & % of Month	Total Tonnage	#	
January	2,889,849	88	2,147,863	39	16,476,854	232	26,127	14	68,065	4	17,845	1	5,841	1			577,345	19	7,399,317	191	76	40%	29,609,106	589
February	2,897,135	90	2,568,737	45	14,899,795	212	36,179	7					11,682	2			712,456	18	6,704,320	164	54	33%	27,830,304	538
March	2,893,605	97	2,906,891	52	16,033,799	236	35,890	8			17,845	1					701,124	20	7,077,922	177	67	38%	29,667,076	591
April	1,924,414	70	2,281,522	41	15,156,659	216	35,845	8			52,792	11	172,546	2			810,206	25	8,242,214	200	64	32%	28,676,198	573
May	2,329,137	85	2,358,483	41	16,271,648	235	25,411	9			369,555	21	6,114,668	64			678,044	18	7,749,381	199	71	36%	35,896,327	672
June	3,069,125	101	2,460,911	42	15,342,801	221	35,845	17			49,858	11	7,783,710	84	52,959	7	1,289,103	29	7,021,482	198	87	44%	37,105,794	710
July	2,927,898	87	2,763,626	48	15,377,917	224	28,308	8			7,941	3	9,221,853	97	23,229	4	706,185	20	7,983,768	203	85	42%	39,040,725	694
August	3,324,529	105	2,251,575	39	16,156,933	229	27,775	17	1,475	1	21,131	15	7,931,185	85			648,961	21	6,767,695	169	67	40%	37,131,259	681
Sept	3,503,155	105	2,371,369	40	15,214,517	221	35,860	9			119,758	12	6,402,111	71			675,702	19	7,194,395	176	65	37%	35,516,867	653
October	3,697,713	100	2,139,252	38	15,870,744	224	12,511	8			7,106	4	836,364	12	15,888	2	814,396	23	7,095,057	195	85	44%	30,489,031	606
November	4,308,396	137	2,491,405	43	15,717,613	214	35,860	11		2	1,493	1	-	-	41,883	5	657,130	20	8,841,178	228	89	39%	32,094,958	661
December	4,109,214	117	2,445,371	42	15,757,486	220	28,584	12	106,623	4					23,832	3	741,882	21	7,234,516	191	53	28%	30,447,508	610
	37,874,170	1,182	29,187,005	510	188,276,766	2,684	364,194	128	176,163	11	665,324	80	38,479,960	418	157,791	4	9,012,534	253	89,311,245	2,291	863	38%	393,505,152	7,578
Average	3,156,181	99	2,432,250	43	15,689,731	224	30,350	11	58,721	3	66,532	8	3,847,996	42	31,558	4	751,045	21	7,442,604	191			32,792,096	632
	32,042		57,229		70,148		2,845		21,353		8,317		92,057				9,017		35,623				51,927	
									Cruise ship season average				7,490,705	80					38,984					

moves

moves

moves

moves

assignments

moves

assignments

assignments

assignments

moves

assignments

assignments

2015	Bulker	#	Car Carrier	#	Container	#	General	#	Naval	#	Other	#	Passenger	#	Reefer	#	Ro-Ro	#	Tanker	#	ATB	Total Tonnage	#	
January	3,331,935	102	2,071,601	35	13,748,321	219	436,506	23			61,474	4	5,841	1			600,566	18	7,332,020	164	63	38%	27,588,264	566
February	2,392,118	70	2,490,846	43	12,417,478	209	136,892	5			125,628	7	5,841	1			648,961	21	6,454,064	145	51	35%	24,671,828	501
March	3,812,507	120	2,584,770	45	14,696,583	234	347,064	14	-	1	279,395	38					812,290	23	6,502,000	148	53	36%	29,034,609	623
April	2,339,148	78	2,376,205	43	13,620,086	224	471,902	16	3,900	1	363,108	37					878,565	24	6,044,508	175	68	39%	26,097,422	598
May	1,988,912	76	2,942,123	54	14,601,739	232	551,593	23	4,100	1	516,239	103	5,788,128	62	17,575	2	706,554	20	6,719,512	187	83	44%	33,836,475	760
June	1,919,864	70	3,667,192	67	15,312,749	232	125,046	6	43,758	3	532,720	71	7,545,636	86	16,427	2	757,825	21	7,864,486	213	108	51%	37,785,703	771
July	1,005,311	39	2,824,705	50	14,527,089	225	412,703	19	14,366	4	13,318	6	7,686,050	86			680,675	19	7,431,829	173	73	42%	34,596,046	621
August	1,669,487	68	2,718,121	47	16,683,264	241	47,860	2			20,247	11	8,259,480	90			724,461	19	8,441,802	206	86	42%	38,564,722	684
Sept	1,258,580	46	2,044,574	37	15,210,723	218	549,900	25			19,664	3	5,573,108	63			818,163	24	6,807,393	174	80	46%	32,282,105	590
October	3,838,730	123	2,301,485	40	15,887,620	230	244,423	12			178,425	26			31,270	3	720,611	23	8,583,315	196	70	36%	31,785,879	653
November	2,709,002	85	2,134,726	38	16,389,787	237	213,721	7			263,532	57			10,012	1	629,023	19	6,701,958	185	91	49%	29,051,761	629
December	2,307,800	71	2,382,511	42	15,669,618	231	225,993	9			1,038,346	67					877,695	22	8,276,536	189	55	29%	30,778,499	631
	28,573,394	948	30,538,859	541	178,765,057	2,732	3,763,603	161	66,124	10	3,412,096	430	34,864,084	389	75,284	4	8,855,389	253	87,159,423	2,155	563	26%	376,073,313	7,627
Average	2,381,116	79	2,544,905	45	14,897,088	228	313,634	13	13,225	2	284,341	36	4,980,583	56	18,821	2	737,949	21	7,263,285	180			31,339,443	636
	30,141		56,449		65,434		23,376		6,612		7,935		89,625		9,411		35,002		40,445				49,308	
									Cruise ship season average				6,970,480	77										

moves

moves

moves

moves

moves

moves

moves

moves

moves

moves

moves

moves

moves

2014	Bulker	#	Car Carrier	#	Container	#	General	#	Naval	#	Other	#	Passenger	#	Reefer	#	Ro-Ro	#	Tanker	#	Wood Chip	Total Tonnage	#	
January	3,050,105	93	2,728,105	51	16,200,977	252	409,431	15			31,570	3	5,841	1			753,337	21	8,728,129	195			31,907,495	631
February	3,583,737	113	2,206,011	39	13,775,913	212	116,907	5	18,476	2	92,682	3	5,841	1			588,345	20	8,437,623	177			28,825,535	572
March	2,888,985	92	2,577,958	47	15,421,032	239	411,209	16			30,737	2					930,900	23	8,365,395	198			30,626,216	617
April	3,245,399	112	2,727,229	48	15,696,863	242	392,450	16			18,880	2					837,102	22	7,762,008	179			30,679,931	621
May	1,882,829	67	2,413,632	43	16,837,792	257	461,196	18	58,265	2	56,515	9	5,645,741	61			720,663	23	7,941,394	185			36,018,027	665
June	2,024,841	73	2,618,459	46	14,804,286	227	505,202	24			2,611	3	7,424,969	85	7,634	2	613,164	20	8,273,650	202			36,294,816	682
July	2,223,507	79	2,411,139	41	15,377,516	240	248,860	10		3	1,035	1	7,021,225	82			852,658	25	7,635,964	177			35,771,904	658
August	1,817,259	66	2,280,514	41	15,753,895																			

<b>PSP 2017</b>	January	February	March	April	May	June	6 mo to date	July	August	Sept	Oct	Nov	Dec		<b>Year to Date to date</b>
Assignments	606														
# of licensed pilots w/o Pres	51														
Average Assgn/pilot on rotation	11.88														
# pilots with < 6 jobs (+1=Pres)	2 + 1														
Assignment change	1														
Tariff Revenue-Trans	\$2,488,326														
RPA-Revenue per Assign	\$4,106														
Moves	594														
Gross Tonnage	31,690,494														

<b>PSP 2016</b>	January	February	March	April	(cruise season) May	June	6 mo to date	July	August	Sept	Oct	Nov	Dec		<b>Year to Date to date</b>
Assignments	605	547	607	584	672	725	<b>3740</b>	694	687	653	<b>617</b>	661	<b>610</b>	-4.8%	<b>7662</b>
# of licensed pilots w/o Pres	51	51	50	51	51	51		51	51	51	51	51	<b>51</b>		
Average Assgn/pilot	11.86	10.73	12.14	11.45	13.18	14.22		13.61	13.47	12.80	12.10	13.22	11.00		16.76
# pilots with < 6 jobs(+1=Pres)	6 + 1	8 + 1	3 + 1	7 + 1	2 + 1	4 + 1		1 + 1	1+1	3 + 1	5 + 1	3 + 1	<b>11.96</b>		
Assignment change	28	30	-32	-36	-102	-66	<b>-178</b>	62	-6	52	-49	17	-31		<b>-102</b>
Tariff Revenue-Trans	\$2,443,846	\$2,269,624	\$2,419,887	\$2,350,195	\$3,039,515	\$3,215,179	\$15,738,246	\$3,320,803	\$3,261,886	\$3,019,483	\$2,571,409	\$2,622,922	\$2,446,187	-6.57%	\$32,980,935
RPA-Revenue per Assign	\$4,039	\$4,149	\$3,987	\$4,024	\$4,523	\$4,435	\$4,208	\$4,785	\$4,748	\$4,624	\$4,168	\$3,968	\$4,010	-1.82%	\$4,304
Moves	589	538	591	573	665	710	<b>3666</b>	689	681	650	606	643	590	-6.5%	<b>7525</b>
Gross Tonnage	29,609,106	27,830,304	29,667,076	28,676,198	35,896,326	37,105,794	188,784,804	39,040,725	37,131,259	35,516,867	30,489,031	32,094,958	30,447,508	-1.08%	<b>393,505,152</b>

<b>PSP 2015</b>	January	February	March	April	(cruise season) May	June	6 mo to date	July	August	Sept	Oct	Nov	Dec		<b>12 months to date</b>
Assignments	577	517	639	620	774	791	<b>3918</b>	632	693	601	<b>666</b>	644	<b>641</b>	6.1%	<b>7795</b>
# of licensed pilots w/o Pres	53	53	52	52	52	52		52	52	52	52	52	<b>52</b>		
Average Assgn/pilot	10.89	9.75	12.29	11.92	14.88	15.51		12.39	13.59	11.78	13.06	12.63	12.57		147.77
# pilots with < 6 jobs(+1=Pres)	7	9	4	2	1	3		4	2	5	3	5			
Assignment change	-62	-66	16	-10	103	101	<b>82</b>	-31	8	4	27	52	37		<b>142</b>
Tariff Revenue-Trans	\$2,202,588	\$2,024,841	\$2,365,096	\$2,153,086	\$2,959,296	\$3,210,995	\$14,915,902	\$2,960,243	\$3,291,439	\$2,756,533	\$2,659,033	\$2,479,703	\$2,618,146	20.24%	\$31,680,998
RPA-Revenue per Assign	\$3,817	\$3,917	\$3,701.25	\$3,473	\$3,823	\$4,059	\$3,807	\$4,684	\$4,750	\$4,587	\$3,993	\$3,850	\$4,084	13.30%	\$4,064
Moves	566	501	623	598	760	771	<b>3819</b>	621	684	590	653	629	631	6.6%	<b>7627</b>
Gross Tonnage	27,588,264	24,671,828	29,034,609	26,097,422	33,836,475	37,785,703	179,014,301	34,596,046	38,564,722	32,282,105	31,785,879	29,051,761	30,778,499	8.32%	<b>376,073,313</b>

<b>PSP 2014</b>	January	February	March	April	(cruise season) May	June	6 mo to date	July	August	Sept	Oct	Nov	Dec		<b>12 mo to date</b>
Assignments	639	583	623	630	671	690	<b>3836</b>	663	685	597	<b>639</b>	<b>592</b>	<b>604</b>	-7.5%	<b>7616</b>
# of licensed pilots w/o Pres	53	53	53	53	53	53		53	53	54	53	53	<b>53</b>	+1 p	
Average Assgn/pilot	12.06	11.00	11.75	11.89	12.66	13.27		12.75	13.17	11.26	12.29	11.38	11.62		<b>12.09</b>
# pilots with < 6 jobs(+1=Pres)	5+1	6+1	5+1	2+1	4+1	5+1		5+1	3+1	4+1					
Assignment change	-23	4	2	71	9	640	<b>74</b>	613	634	546	588	541	552		<b>2996</b>
Tariff Revenue-Trans	\$2,554,575	\$2,261,575	\$2,403,969	\$2,464,091	\$3,036,561	\$3,033,723	\$15,754,494	\$3,024,434	\$3,219,531	\$2,655,500	\$2,430,062	\$2,177,805	\$2,177,417	0.00%	\$31,439,243
RPA-Revenue per Assign	\$3,998	\$3,879	\$3,858.70	\$3,911	\$4,525	\$4,397	\$4,107	\$4,562	\$4,700	\$4,448	\$3,803	\$3,679	\$3,605	0.00%	\$4,128
Moves	631	572	617	621	665	682	<b>3788</b>	658	677	592	627	581	592	-7.6%	<b>7515</b>
Gross Tonnage	31,907,495	28,825,535	30,626,216	30,679,931	36,018,027	36,294,816	194,352,020	35,771,904	38,544,465	31,254,931	30,368,954	28,122,353	28,414,888	-6.25%	<b>386,829,515</b>

2017				Jan
Pilot Code	Actual Trips PSP Earned Revenue Report Detail			Actual Assign
4	ANA	Anacker, D.S.	Lic 3/27/12	7
4	ANT	Anthony, Michael	Lic 7/24/12	15
5	ARN	Arnold, J. E.		16
5	BLA	Blake, M.E.		16
5	BOU	Bouma, Blair	Lic 7/28/11	11
3	BRO	Brouillard, Dan	Lic 7/31/13	10
5	BRU	Brusco, David	Lic 3/11/10	14
5	BUJ	Bujacich, J.P.		3
3	CAW	Carley, W. Bud	Lic 1/10/13	6
5	CAI	Carlson, I.J.		11
1	CAJ	Carstensen, J	Lic. 9/30/15	13
5	COE	Coe, F.A.		11
2	COL	Coleman, S	Lic. 8/27/14	13
3	COR	Coryell, T.D.	Lic. 12/13/13	10
5	EME	Emerson, L. P.		10
4	ENF	Engstrom, F. E.	Lic 11/15/12	8
5	ENV	Engstrom, V.		12
2	GAL	Galvin, Jamie	Lic 11/11/14	13
5	GIE	Giese, P. A.		13
5	GRD	Grobschmit, D.W.		7
5	HAI	Hannuksela, J		14
5	HAR	Harris, J. B.		14
5	HEN	Henshaw, B. F.		8
5	HUR	Hurt, G. D.		8
2	JEN	Jensen, Brian	Lic. 12/22/14	9
5	KAL	Kalvoy, J.E.		3
4	KEA	Kearns, J.	Lic. 1/12/12	10
	KEN	Kelleher, N.T.	Lic. 4/14/16	8
5	KEP	Kelly, P.S.		14
5	KLA	Klapperich, E.C.		8
2	LIC	Lichty, E.C.	Lic. 5/1/14	14
1	LOB	Lowe, Brad	Lic. 9/23/15	11
3	LOW	Lowery, W.W.	Lic. 2/11/13	16
5	MAR	Marmol, E.		11
5	MAY	Mayer, D. W.		11
5	MOT	Moreno, S.		13
5	MOR	Mork, S. E.		14
5	NEW	Newman, A. J.		14
5	SAN	Sanders, D. A.		15
5	SCO	Scoggins, J		13
5	SCR	Scragg, J.		11
5	SEM	Semler, J. R.		14
5	SES	Semler, S.		16
5	SEY	Seymour, L.		9
5	SHA	Shaffer, D. L.		14
5	SHJ	Shaffer, J. A.		23
5	SHU	Shuler, M.		12
5	SLI	Sliker, W.J.		11
5	SOR	Soriano, D. B.		13
5	THG	Thoreson, George		19
5	VON	vonBrandenfels, E. M.		1
5	WIG	Wildes, G. R.		16
<b>Total Assignments/ Month</b>				<b>606</b>
<b>Number of licensed PS pilots</b>				<b>52</b>
<b>Pilots on rotation</b>				<b>51</b>
<b>Average Assgn/pilot on rotation</b>				<b>11.88</b>
<b>PSP LOA Report (MOVES)</b>				
<b>Cancellations</b>				<b>606</b>
<b># of Pilots with &lt; 6 jobs(+1=Pres)</b>				<b>2 + 1</b>
<b>Pilots w/&gt;5 trips &amp; their avg # of trips</b>				<b>47P; 12.3</b>
<b>Medical circumstances:</b>				