

PSP 2016	January	February	March	April	(cruise season) May	June	6 mo to date	July	August	Sept	Oct	Nov	Dec		Year to Date to date
Assignments	605	547	607	584	672	725	3740	694	687	653	617	661	610	-4.8%	7662
# of licensed pilots w/o Pres	51	51	50	51	51	51		51	51	51	51	51	51		
Average Assgn/pilot	11.86	10.73	12.14	11.45	13.18	14.22		13.61	13.47	12.80	12.10	13.22	11.00		16.76
# pilots with < 6 jobs(+1=Pres)	6 + 1	8 + 1	3 + 1	7 + 1	2 + 1	4 + 1		1 + 1	1+1	3 + 1	5 + 1	3 + 1	11.96		
Assignment change	28	30	-32	-36	-102	-66	-178	62	-6	52	-49	17	-31		-102
Tariff Revenue-Trans	\$2,443,846	\$2,269,624	\$2,419,887	\$2,350,195	\$3,039,515	\$3,215,179	\$15,738,246	\$3,320,803	\$3,261,886	\$3,019,483	\$2,571,409	\$2,622,922	\$2,446,187	-6.57%	\$32,980,935
RPA-Revenue per Assign	\$4,039	\$4,149	\$3,987	\$4,024	\$4,523	\$4,435	\$4,208	\$4,785	\$4,748	\$4,624	\$4,168	\$3,968	\$4,010	-1.82%	\$4,304
Moves	589	538	591	573	665	710	3666	689	681	650	606	643	590	-6.5%	7525
Gross Tonnage	29,609,106	27,830,304	29,667,076	28,676,198	35,896,326	37,105,794	188,784,804	39,040,725	37,131,259	35,516,867	30,489,031	32,094,958	30,447,508	-1.08%	393,505,152
PSP 2015	January	February	March	April	(cruise season) May	June	6 mo to date	July	August	Sept	Oct	Nov	Dec		12 months to date
Assignments	577	517	639	620	774	791	3918	632	693	601	666	644	641	6.1%	7795
# of licensed pilots w/o Pres	53	53	52	52	52	52		52	52	52	52	52	52		
Average Assgn/pilot	10.89	9.75	12.29	11.92	14.88	15.51		12.39	13.59	11.78	13.06	12.63	12.57		147.77
# pilots with < 6 jobs(+1=Pres)	7	9	4	2	1	3		4	2	5	3	5			
Assignment change	-62	-66	16	-10	103	101	82	-31	8	4	27	52	37		142
Tariff Revenue-Trans	\$2,202,588	\$2,024,841	\$2,365,096	\$2,153,086	\$2,959,296	\$3,210,995	\$14,915,902	\$2,960,243	\$3,291,439	\$2,756,533	\$2,659,033	\$2,479,703	\$2,618,146	20.24%	\$31,680,998
RPA-Revenue per Assign	\$3,817	\$3,917	\$3,701.25	\$3,473	\$3,823	\$4,059	\$3,807	\$4,684	\$4,750	\$4,587	\$3,993	\$3,850	\$4,084	13.30%	\$4,064
Moves	566	501	623	598	760	771	3819	621	684	590	653	629	631	6.6%	7627
Gross Tonnage	27,588,264	24,671,828	29,034,609	26,097,422	33,836,475	37,785,703	179,014,301	34,596,046	38,564,722	32,282,105	31,785,879	29,051,761	30,778,499	8.32%	376,073,313
PSP 2014	January	February	March	April	(cruise season) May	June	6 mo to date	July	August	Sept	Oct	Nov	Dec		12 mo to date
Assignments	639	583	623	630	671	690	3836	663	685	597	639	592	604	-7.5%	7616
# of licensed pilots w/o Pres	53	53	53	53	53	53		53	53	54	53	53	53	+1 p	
Average Assgn/pilot	12.06	11.00	11.75	11.89	12.66	13.27		12.75	13.17	11.26	12.29	11.38	11.62		12.09
# pilots with < 6 jobs(+1=Pres)	5+1	6+1	5+1	2+1	4+1	5+1		5+1	3+1	4+1					
Assignment change	-23	4	2	71	9	640	74	613	634	546	588	541	552		2996
Tariff Revenue-Trans	\$2,554,575	\$2,261,575	\$2,403,969	\$2,464,091	\$3,036,561	\$3,033,723	\$15,754,494	\$3,024,434	\$3,219,531	\$2,655,500	\$2,430,062	\$2,177,805	\$2,177,417	0.00%	\$31,439,243
RPA-Revenue per Assign	\$3,998	\$3,879	\$3,858.70	\$3,911	\$4,525	\$4,397	\$4,107	\$4,562	\$4,700	\$4,448	\$3,803	\$3,679	\$3,605	0.00%	\$4,128
Moves	631	572	617	621	665	682	3788	658	677	592	627	581	592	-7.6%	7515
Gross Tonnage	31,907,495	28,825,535	30,626,216	30,679,931	36,018,027	36,294,816	194,352,020	35,771,904	38,544,465	31,254,931	30,368,954	28,122,353	28,414,888	-6.25%	386,829,515
PSP 2013	January	February	March	April	(cruise season) May	June	6 mo to date	July	August	Sept	Oct	Nov	Dec		12 mo to date
Total Assignments/ Month	662	579	621	559	662	679	3762	715	705	657	682	645	653	4.5%	7819
# of licensed pilots w/o Pres	51.34	51.2	50	50	50	50		50	51	51	51	51	52		53
Average Assgn/pilot	12.89	11.31	12.42	11.18	13.24	13.06		13.75	13.30	12.40	12.87	12.17	12.32		12.45
# pilots with < 6 jobs(+1=Pres)	7+1	11+1	6+1	4+1	0+1	4+1		6+1	3+1	4+1	2+1	4+1	5+1		
Assignment change	32	8	25	-46	6	-2	-43	-2	-1	-1	-1	-1.7	-1		31573640
Tariff Revenue-Trans	\$2,493,701	\$2,229,846	\$2,311,037	\$2,212,733	\$2,820,632	\$3,028,751	\$15,096,700	\$3,046,277	\$3,112,078	\$2,858,510	\$2,481,925	\$2,465,837	\$2,512,313	9.73%	\$31,573,640
RPA-Revenue per Assign	\$3,767	\$3,851	\$3,721	\$3,958	\$4,261	\$4,461	\$4,013	\$4,261	\$4,414	\$4,351	\$3,639	\$3,823	\$3,847	0.00%	\$4,038
Moves	646	568	608	557	652	674	3705	708	696	649	669	634	641	5.1%	7702
Gross Tonnage	31,428,636	27,228,140	28,430,900	27,001,386	33,491,659	35,508,456	183,089,177	36,570,802	36,469,776	33,389,476	30,613,475	30,655,994	30,309,073	1.56%	381,097,773
PSP 2012	January	February	March	April	(cruise season) May	June	6 mo to date	July	August	Sept	Oct	Nov	Dec		12 mo to date
Total Assignments/ Month	630	571	596	605	656	747	3805	728	721	661	629	600	625	-1.4%	313.7
# of licensed pilots w/o Pres	50	50	50.1	51	51	52		52	52	52	52	52.7	53		52
Average Assgn/pilot	12.60	11.42	11.90	11.86	12.86	14.65		14.27	14.14	12.96	12.33	11.61	12.02		12.72
# pilots with < 6 jobs(+1=Pres)	6+1	4+1	5+1	3+1	3+1	4+1		5+1	4+1	4+1	5+1	6+1	7+1		
Assignment change	19	-2	-20	-1	-1	-1	-5	-1	0	0	0	0.7	1		30617681
Tariff Revenue-Trans	\$2,373,948	\$2,123,989	\$2,061,646	\$2,086,614	\$2,596,933	\$3,203,941	\$14,447,071	\$3,152,810	\$3,193,924	\$2,866,720	\$2,411,757	\$2,255,805	\$2,289,594	-1.65%	\$30,617,681
RPA-Revenue per Assign	\$3,768	\$3,720	\$3,459	\$3,449	\$3,958.74	\$4,289	\$3,797	\$4,331	\$4,430	\$4,337	\$3,834	\$3,760	\$3,663	0.00%	\$3,941
Moves	619	559	578	590	646	735	3727	722	716	653	616	593	610	-2.6%	7637
Gross Tonnage	30,363,264	26,057,669	26,005,418	26,393,270	32,094,230	38,457,825	179,371,676	38,321,278	39,264,642	35,099,780	31,038,998	28,855,375	29,842,523	0.70%	381,794,272

2016	Moves YTD	Moves/ Month	SHIP MOVES BY ZONE/DISTANCE					
			IntraHbr	≤30 mi	≤50 mi	≤75 mi	≤100mi	101+ mi
			1	2	3	4	5	6
Jan		591	121	85	61	157	167	0
Feb	1,128	537	91	102	43	139	162	0
Mar	1,718	590	102	91	58	150	189	0
Apr	2,291	573	107	79	64	155	168	0
May	2,956	665	105	97	63	224	176	
June	3,666	710	121	93	65	254	177	0
July	4,355	689	98	82	58	271	180	0
Aug	5,036	681	106	88	56	247	184	
Sept	5,686	650	115	80	68	214	173	
Oct	6,292	606	94	113	63	173	163	
Nov	6,935	643	106	123	72	170	172	0
Dec	7,525	590	94	107	65	171	153	
2016 / 2015 Δ		(102)	(167)	102	47	(36)	(30)	(12)

SHIP MOVES BY TYPE													Totals
Car										Wood Chip			
Bulker	Carrier	Container	Fish	General	Naval	Other	Passngr	Reefer	Ro-Ro	Tanker	Wood Chip	Totals	
88	39	232		14	4	1	1		19	191		589	
90	45	212		7			2		18	164		538	
97	52	236	0	8	0	1	0	0	20	177		591	
70	41	216		8	0	11	2	0	25	200		573	
84	41	232		9	0	20	64	0	18	197		665	
101	42	221	0	17	0	11	84	7	29	198		710	
86	47	223	0	8	0	3	97	3	20	202		689	
105	39	229		17	1	15	85	0	21	169		681	
105	40	220		9		12	71		19	174		650	
100	38	224		8		4	12	2	23	195		606	
127	43	213		10	2	1	0	5	20	222	0	643	
110	41	214		11	4			3	20	187		590	
1163	508	2672	0	126	11	79	418	20	252	2276	0	7525	
215	(33)	(60)	0	(35)	1	(349)	29	12	(1)	121	(2)	(102)	

2015	Moves YTD	Moves/ Month	SHIP MOVES BY ZONE/DISTANCE					
			IntraHbr	≤30 mi	≤50 mi	≤75 mi	≤100mi	101+ mi
			1	2	3	4	5	6
Jan		566	88	93	51	189	144	1
Feb	1,067	501	67	88	40	154	144	4
Mar	1,690	623	139	85	50	168	179	0
Apr	2,288	598	127	60	59	174	178	0
May	3,048	760	178	92	50	238	197	5
June	3,819	771	152	108	65	249	197	0
July	4,440	621	95	70	56	231	169	0
Aug	5,124	684	117	72	59	247	189	0
Sept	5,714	590	87	77	52	208	166	0
Oct	6,367	653	124	93	64	182	190	
Nov	6,996	629	117	100	65	177	170	0
Dec	7,627	631	136	100	78	144	171	2
2014/2015 ytd Δ		111	202	(34)	22	(43)	(54)	12

SHIP MOVES BY TYPE													Move Totals
Car										Wood Chip			
Bulker	Carrier	Container	Fish	General	Naval	Other	Passngr	Reefer	Ro-Ro	Tanker	Wood Chip	Totals	
102	35	219		23		4	1		18	164		566	
70	43	209		5		5	1		21	145	2	501	
120	45	234		14	1	38			23	148		623	
78	43	224		16	1	37			24	175		598	
76	54	232		23	1	103	62	2	20	187		760	
70	67	232		6	3	71	86	2	21	213		771	
39	50	225		19	4	6	86		19	173		621	
68	47	241		2		11	90		19	206		684	
46	37	218		25		3	63		24	174		590	
123	40	230		12		26		3	23	196		653	
85	38	237		7		170		1	19	185		629	
71	42	231		9		67			22	189		631	
948	541	2732	0	161	10	428	389	8	253	2155	2	7627	
(104)	17	(70)	(5)	(14)	(2)	382	20	(8)	(9)	(96)	0	111	

2014	Moves YTD	Moves/ Month	SHIP MOVES BY ZONE/DISTANCE					
			IntraHbr	≤30 mi	≤50 mi	≤75 mi	≤100mi	101+ mi
			1	2	3	4	5	6
Jan		631	113	96	56	168	198	0
Feb	1,203	572	94	99	52	155	172	0
Mar	1,820	617	106	99	47	178	187	0
Apr	2,441	621	109	83	48	194	187	0
May	3,106	665	93	94	48	247	183	0
June	3,788	682	99	82	61	260	180	0
July	4,446	658	93	81	52	253	179	0
Aug	5,124	678	101	90	65	234	188	0
Sept	5,716	592	73	82	64	203	170	0
Oct	6,343	627	115	85	60	165	202	0
Nov	6,924	581	117	88	50	174	152	
Dec	7,516	592	112	93	64	173	150	0
2013/2014 ytd Δ	(186)	(186)	79	(54)	25	(202)	(31)	(2)

SHIP MOVES BY TYPE													Totals
Car										Wood Chip			
Bulker	Carrier	Container	Fish	General	Naval	Other	Passngr	Reefer	Ro-Ro	Tanker	Wood Chip	Totals	
93	51	252	1	15		2	1		21	195		631	
113	39	212		5	2	1	1		20	177	2	572	
92	47	239		16		2			23	198		617	
112	48	242		16		2			22	179		621	
67	43	257	1	18	2	8	61		23	185		665	
73	46	227	1	24		2	85	2	20	202		682	
79	41	240		10	3	1	82		25	177		658	
66	41	236		19	3	8	85		19	201		678	
48	29	218		10		8	54	1	27	197		592	
93	43	242	2	16		8		9	23	191		627	
126	44	206		6		1		4	18	176		581	
90	52	231		20	2	3			21	173		592	
1052	524	2802	5	175	12	46	369	16	262	2251	2	7516	
133	(8)	(91)	4	2	0	(71)	(8)	5	2	(156)	2	(186)	

2013	Moves YTD	Moves/ Month	SHIP MOVES BY ZONE/DISTANCE					
			IntraHbr	≤30 mi	≤50 mi	≤75 mi	≤100mi	101+ mi
			1	2	3	4	5	6
Jan		646	101	104	58	192	191	0
Feb	1,214	568	81	88	49	172	178	
Mar	1,822	608	95	101	49	175	185	2
Apr	2,379	557	71	91	35	186	174	
May	cruise 3,031	652	93	94	48	239	178	
June	ship 3,705	674	84	81	56	286	167	
July	season 12,335	708	103	117	46	271	171	0
August	in 5,109	696	89	88	58	278	183	0
Sept	blue 5,758	649	78	92	59	237	183	
October		669	115	92	62	201	199	
November		7,061	634	106	92	60	182	194
December		7,702	641	130	86	62	187	176
2012/2013 ytd Δ	65	7702	1146	1126	642	2606	2179	2

SHIP MOVES BY TYPE													Totals
Car										Wood Chip			
Bulker	Carrier	Container	Fish	General	Naval	Other	Passngr	Reefer	Ro-Ro	Tanker	Wood Chip	Totals	
95	40	257		5	2	4	1		17	225		646	
82	43	229		15	1		5		19	174		568	
91	42	228		14		4			26	203		608	
52	47	241		13	3	12			22	167		557	
64	42	245		21		7	59		23	191		652	
62	44	246		8	1	9	89	2	21	192		674	
51	43	244		14	1	23	80		22	230		708	
64	42	247		21	1	11	84		26	200		696	
48	46	239		28	2	5	59	4	18	200		649	
111	45	245		7		14		5	24	218		669	
104	50	245		11		2			21	201		634	
95	48	227	1	16	1	26			21	206		641	
919	532	2893	1	173	12	117	377	11	260	2407	0	7702	
(101)	(12)	76	1	35	(4)	(45)	(33)	(4)	12	143	(3)	65	

DECEMBER 2016									
YTD	Totals		LOA	IntraHbr	≤ 30 mi	≤50 mi	≤75 mi	≤100mi	101+ mi
	1	2		3	4	5	6		
310	20	Up to 500	6	4	6	4			
776	44	500-599	8	7	3	17	9		
2056	205	600-699	19	53	48	49	36		
1051	91	700-799	8	26		24	33		
893	68	800-899	10	12	8	20	18		
1433	99	900-999	21	3		33	42		
1044	83	1000--	25	9		31	18		
7563	610		97	114	65	178	156	0	
Correction			-38	-5	-14	-1	-12	-6	
			7525	605	-14	96	102	59	178

DECEMBER 2015									
YTD	Totals		LOA	IntraHbr	≤ 30 mi	≤50 mi	≤75 mi	≤100mi	101+ mi
	1	2		3	4	5	6		
528	57	Up to 500	31	9	11	5	1		
939	70	500-599	12	17	16	15	8	2	
1829	151	600-699	20	31	34	28	38		
984	86	700-799	17	13	4	20	32		
792	69	800-899	9	7	9	17	27		
1673	122	900-999	19	14	4	36	49		
876	76	1000--	28	9		23	16		
7621	631		136	100	78	144	171	2	
			7621	1427	1038	689	2361	2094	12

DECEMBER 2014									
YTD	Totals		LOA	IntraHbr	≤ 30 mi	≤50 mi	≤75 mi	≤100mi	101+ mi
	1	2		3	4	5	6		
173	13	Up to 500	1	1	2	8	1		
863	84	500-599	19	15	22	16	12		
1896	165	600-699	26	38	32	35	34		
967	75	700-799	15	3		23	34		
1075	79	800-899	9	10	8	22	30		
1581	114	900-999	20	14		47	33		
961	62	1000--	22	12		22	6		
7516	592		112	93	64	173	150	0	
			1225	1072	667	2404	2148	0	

DECEMBER 2013									
YTD	Totals		LOA	IntraHbr	≤ 30 mi	≤50 mi	≤75 mi	≤100mi	101+ mi
	1	2		3	4	5	6		
281	43	Up to 500	24	2	5	10	2	0	
979	83	500-599	8	19	18	26	12	0	
1920	159	600-699	19	35	25	45	35	0	
902	81	700-799	24	1	4	18	34	0	
1054	95	800-899	10	17	7	27	34	0	
1929	111	900-999	20	8	3	41	39	0	
636	69	1000--	25	4		20	20	0	
7701	641		130	86	62	187	176	0	
			1146	1126	642	2606	2179	2	

NOVEMBER 2016									
YTD	Totals		LOA	IntraHbr	≤ 30 mi	≤50 mi	≤75 mi	≤100mi	101+ mi
	1	2		3	4	5	6		
290	28	Up to 500	0	7	11	9	1	0	0
732	69	500-599	10	20	9	21	9	0	0
1851	199	600-699	27	49	37	38	48	0	0
960	106	700-799	16	18	2	28	42	0	0
825	75	800-899	8	15	9	23	20	0	0
1334	88	900-999	13	10	5	29	31	0	0
961	96	1000--	34	11	0	27	24	0	0
661			108	130	73	175	175	0	
YTD totals			6953	1168	1040	672	2159	1914	0

NOVEMBER 2015									
YTD	Totals		LOA	IntraHbr	≤ 30 mi	≤50 mi	≤75 mi	≤100mi	101+ mi
	1	2		3	4	5	6		
471	64	Up to 500	18	10	7	29	0	0	0
869	71	500-599	14	16	12	19	10	0	0
1678	161	600-699	14	36	35	33	43	0	0
898	78	700-799	13	7	2	23	33	0	0
723	52	800-899	10	5	5	11	21	0	0
1551	115	900-999	19	12	4	34	46	0	0
800	88	1000--	29	14	0	28	17	0	0
629			117	100	65	177	170	0	0
YTD totals			6990	1291	938	611	2217	1923	10

NOVEMBER 2014									
YTD	Totals		LOA	IntraHbr	≤ 30 mi	≤50 mi	≤75 mi	≤100mi	101+ mi
	1	2		3	4	5	6		
160	11	Up to 500	1	2	2	6	0	0	0
779	71	500-599	26	9	10	14	12	0	0
1731	147	600-699	15	30	26	37	39	0	0
892	103	700-799	23	11	3	24	42	0	0
996	83	800-899	12	14	8	21	28	0	0
1467	104	900-999	21	11	1	46	25	0	0
899	62	1000--	19	11	0	26	6	0	0
581			117	88	50	174	152	0	0
YTD totals			6924	1113	979	603	2231	1998	0

NOVEMBER 2013									
YTD	Totals		LOA	IntraHbr	≤ 30 mi	≤50 mi	≤75 mi	≤100mi	101+ mi
	1	2		3	4	5	6		
238	12	Up to 500	3	2	4	3	0	0	0
896	73	500-599	14	9	15	20	15	0	0
1761	183	600-699	19	47	30	50	37	0	0
821	95	700-799	19	5	0	22	49	0	0
959	90	800-899	3	19	9	25	34	0	0
1818	99	900-999	16	5	2	40	36	0	0
567	82	1000--	32	5	0	22	23	0	0
634			106	92	60	182	194	0	0
YTD totals			7060	1016	1040	580	2419	2003	2

OCTOBER 2016									
YTD	Totals		LOA	IntraHbr	≤ 30 mi	≤50 mi	≤75 mi	≤100mi	101+ mi
	1	2		3	4	5	6		
262	35	Up to 500	5	7	10	11	2		
663	45	500-599	7	14	1	13	10		
1652	164	600-699	15	41	38	39	31		
854	105	700-799	13	23	4	27	38		
750	71	800-899	8	13	9	21	20		
1246	96	900-999	18	5	1	29	43		
865	90	1000--	28	10		33	19		
606			94	113	63	173	163	0	
YTD totals			6292	1060	910	599	1984	1739	0
YTD Averages			629.2	106	91	59.9	198.4	173.9	0

OCTOBER 2015									
YTD	Totals		LOA	IntraHbr	≤ 30 mi	≤50 mi	≤75 mi	≤100mi	101+ mi
	1	2		3	4	5	6		
407	42	Up to 500	10	7	4	21		0	
798	89	500-599	25	11	14	23	16	0	
1517	148	600-699	11	34	27	41	35	0	
820	104	700-799	20	10	3	29	42	0	
671	75	800-899	9	8	8	16	34	0	
1436	111	900-999	20	14	8	25	44	0	
712	84	1000--	29	9		27	19	0	
653			124	93	64	182	190	0	
YTD totals			6361	1174	838	546	2040	1753	10
YTD Averages			636.1	117.4	83.8	54.6	204	175.3	1

OCTOBER 2014									
YTD	Totals		LOA	IntraHbr	≤ 30 mi	≤50 mi	≤75 mi	≤100mi	101+ mi
	1	2		3	4	5	6		
149	26	Up to 500	7	4	2	13	0	0	0
708	70	500-599	10	13	13	22	12	0	0
1584	148	600-699	15	29	30	36	38	0	0
789	103	700-799	23	6	7	20	47	0	0
913	92	800-899	10	17	7	19	39	0	0
1363	107	900-999	19	8	1	34	45	0	0
837	81	1000--	31	8	0	21	21	0	0
627			115	85	60	165	202	0	0
YTD totals			6343	996	891	553	2057	1846	0
YTD Averages			634.3	99.6	89.1	55.3	205.7	184.6	0

OCTOBER 2013									
YTD	Totals		LOA	IntraHbr	≤ 30 mi	≤50 mi	≤75 mi	≤100mi	101+ mi
	1	2		3	4	5	6		
226	28	Up to 500	6	2	3	13	4	0	0
823	74	500-599	14	15	16	23	6	0	0
1578	185	600-699	23	41	30	52	39	0	0
726	102	700-799	17	5	2	24	54	0	0
869	92	800-899	11	16	11	20	34	0	0
1719	144	900-999	24	13	0	63	44	0	0
485	44	1000--	20	0	0	6	18	0	0
669			115	92					

		AUGUST 2016								
YTD	Totals	LOA	IntraHbr		≤ 30 mi		≤50 mi	≤75 mi	≤100mi	101+ mi
			1	2	3	4	5	6		
195	39	Up to 500	11	8	11	7	2			
569	73	500-599	23	8	3	27	12			
1330	153	600-699	12	29	31	35	46			
646	97	700-799	7	19	3	24	44			
605	65	800-899	7	9	5	25	19			
1005	155	900-999	18	6	3	89	39			
686	99	1000--	28	9		40	22			
YTD totals		681	106	88	56	247	184	0		
YTD Averages		629.5	106.4	89.6	58.5	199.6	175.4	0.0		

		AUGUST 2015								
YTD	Totals	LOA	IntraHbr		≤ 30 mi		≤50 mi	≤75 mi	≤100mi	101+ mi
			1	2	3	4	5	6		
348	19	Up to 500	5	4	4	6	0	0		
633	88	500-599	25	10	14	26	13	0		
1230	154	600-699	15	24	28	34	53	0		
650	79	700-799	7	9	5	30	28	0		
545	69	800-899	13	7	7	17	25	0		
1169	182	900-999	22	8	1	100	51	0		
543	93	1000--	30	10	0	34	19	0		
YTD totals		684	117	72	59	247	189	0		
YTD Averages		639.8	120.4	83.5	53.8	206.3	174.6	1.3		

		AUGUST 2014								
YTD	Totals	LOA	IntraHbr		≤ 30 mi		≤50 mi	≤75 mi	≤100mi	101+ mi
			1	2	3	4	5	6		
112	22	Up to 500	6	4	3	7	2	0		
566	66	500-599	18	11	10	12	15	0		
1296	147	600-699	12	27	35	34	39	0		
629	70	700-799	8	4	3	21	34	0		
718	97	800-899	9	23	12	20	33	0		
1126	180	900-999	18	11	2	104	45	0		
677	96	1000--	30	10	0	36	20	0		
YTD totals		678	101	90	65	234	188	0		
YTD Averages		640.5	101	91	54	211	184	0		

		AUGUST 2013								
YTD	Totals	LOA	IntraHbr		≤ 30 mi		≤50 mi	≤75 mi	≤100mi	101+ mi
			1	2	3	4	5	6		
179	30	Up to 500	5	5	2	18				
664	83	500-599	26	4	13	24	16	0		
1238	157	600-699	16	35	29	48	29	0		
571	60	700-799		6	3	13	38	0		
682	97	800-899	3	22	8	26	38	0		
1381	211	900-999	20	16	3	129	43	0		
393	58	1000--	19			20	19	0		
YTD totals		696	89	88	58	278	183	0		
YTD Averages		638.5	89.6	95.5	49.9	224.9	178.4	0.3		

		JULY 2016								
YTD	Totals	LOA	IntraHbr		≤ 30 mi		≤50 mi	≤75 mi	≤100mi	101+ mi
			1	2	3	4	5	6		
156	28	Up to 500	2	4	11	4	7			
496	102	500-599	8	9	3	21	61			
1177	148	600-699	15	35	28	40	30			
549	90	700-799	14	7	5	44	20			
540	104	800-899	12	12	9	30	41			
850	142	900-999	22	8	2	89	21			
587	75	1000--	25	7		43				
YTD totals		689	98	82	58	271	180	0		
YTD Averages		622.1	106.4	89.9	58.9	192.9	174.1	0.0		

		JULY 2015								
YTD	Totals	LOA	IntraHbr		≤ 30 mi		≤50 mi	≤75 mi	≤100mi	101+ mi
			1	2	3	4	5	6		
329	22	Up to 500	4	3	2	13	0			
545	68	500-599	19	4	12	21	12			
1076	145	600-699	16	29	31	30	39			
571	64	700-799	3	4	3	27	27			
476	63	800-899	9	6	6	13	29			
987	176	900-999	19	14	2	95	46			
450	83	1000--	25	10	0	32	16			
YTD totals		621	95	70	56	231	169	0		
YTD Averages		633.4	120.9	85.1	53.0	200.4	172.6	1.4		

		JULY 2014								
YTD	Totals	LOA	IntraHbr		≤ 30 mi		≤50 mi	≤75 mi	≤100mi	101+ mi
			1	2	3	4	5	6		
90	11	Up to 500	2		1	6	2			
500	78	500-599	13	16	13	28	8			
1149	147	600-699	11	29	27	53	27			
559	83	700-799	16	4	2	20	41			
621	78	800-899	4	11	7	20	36			
946	173	900-999	18	13	2	95	45			
581	88	1000--	29	8		31	20			
YTD totals		658	93	81	52	253	179	0		
YTD Averages		635.1	101.0	90.6	52.0	207.9	183.7	0.0		

		JULY 2013								
YTD	Totals	LOA	IntraHbr		≤ 30 mi		≤50 mi	≤75 mi	≤100mi	101+ mi
			1	2	3	4	5	6		
149	33	Up to 500	13	4	0	15	1	0		
581	91	500-599	18	24	10	22	17	0		
1081	152	600-699	16	40	22	50	24	0		
511	73	700-799	3	12	6	15	37	0		
585	92	800-899	9	18	7	27	31	0		
1170	216	900-999	25	19	1	126	45	0		
335	51	1000--	19	0	0	16	16	0		
YTD totals		708	103	117	46	271	171	0		
YTD Averages		630.4	89.7	96.6	48.7	217.3	177.7	0.3		

		JUNE 2016								
YTD	Totals	LOA	IntraHbr		≤ 30 mi		≤50 mi	≤75 mi	≤100mi	101+ mi
			1	2	3	4	5	6		
128	39	Up to 500	7	7	11	13	1			
394	67	500-599	20	11	4	25	7			
1029	194	600-699	25	43	37	39	50			
459	87	700-799	11	4	3	31	38			
436	77	800-899	9	12	8	26	22			
708	152	900-999	24	7	2	78	41			
418	94	1000--	25	9		42	18			
YTD totals		710	121	93	65	254	177	0		
YTD Averages		611.0	107.8	91.2	59.0	179.8	173.2	0.0		

		JUNE 2015								
YTD	Totals	LOA	IntraHbr		≤ 30 mi		≤50 mi	≤75 mi	≤100mi	101+ mi
			1	2	3	4	5	6		
307	73	Up to 500	36	10	6	21	0			
477	108	500-599	23	25	12	35	13			
931	184	600-699	25	33	32	31	63			
507	93	700-799	11	13	6	28	35			
413	60	800-899	11	5	7	13	24			
811	166	900-999	18	13	2	88	45			
367	87	1000--	28	9		33	17			
YTD totals		771	152	108	65	249	197	0		
YTD Averages		635.5	125.2	87.7	52.5	195.3	173.2	1.7		

		JUNE 2014								
YTD	Totals	LOA	IntraHbr		≤ 30 mi		≤50 mi	≤75 mi	≤100mi	101+ mi
			1	2	3	4	5	6		
79	25	Up to 500	5	3	2	14	1			
422	86	500-599	16	12	13	30	15			
1002	160	600-699	16	32	33	45	34			
476	71	700-799	9	4	2	22	34			
543	83	800-899	8	17	9	20	29			
773	174	900-999	19	7	2	97	49			
493	83	1000--	26	7		32	18			
YTD totals		682	96	82	61	260	180	0		
YTD Averages		631.3	102.3	92.2	52.0	200.3	184.5	0.0		

		JUNE 2013								
YTD	Totals	LOA	IntraHbr		≤ 30 mi		≤50 mi	≤75 mi	≤100mi	101+ mi
			1	2	3	4	5	6		
116	20	Up to 500	2	3	3	13	2	0		
490	87	500-599	18	13	12	34	10	0		
929	160	600-699	16	33	32	52	27	0		
438	66	700-799	1	6	4	15	40	0		
493	80									

APRIL 2016										APRIL 2015										APRIL 2014										APRIL 2013									
YTD	Totals		LOA	intraHr		≤ 30 mi	≤ 50 mi	≤ 75 mi	≤ 100 mi	101+ mi	YTD	Totals		LOA	IntraHr		≤ 30 mi	≤ 50 mi	≤ 75 mi	≤ 100 mi	101+ mi	YTD	Totals		LOA	IntraHr		≤ 30 mi	≤ 50 mi	≤ 75 mi	≤ 100 mi	101+ mi							
	1	2		3	4							5	6		1	2							3	4		5	6						1	2	3	4	5	6	1
63	28	Up to 500	1	3	8	6	0	0	0	117	39	Up to 500	20	6	3	10	0	0	32	7	Up to 500	0	1	0	2	4	0	82	26	Up to 500	6	5	1	11	3	0			
253	55	500-599	19	6	3	17	10	0	0	278	99	500-599	29	15	14	30	11	0	263	62	500-599	15	8	6	25	8	0	317	88	500-599	18	16	8	29	17	0			
660	168	600-699	17	35	44	34	38	0	0	570	157	600-699	19	26	31	34	47	0	693	198	600-699	31	41	30	57	39	0	604	124	600-699	2	29	13	56	24	0			
303	69	700-799	6	12	1	18	32	0	0	341	75	700-799	10	4	4	19	38	0	331	77	700-799	15	0	2	19	41	0	305	58	700-799	1	3	2	11	41	0			
276	72	800-899	11	7	8	22	24	0	0	276	69	800-899	9	7	7	20	26	0	381	88	800-899	4	19	7	29	29	0	338	73	800-899	3	18	7	18	27	0			
414	104	900-999	17	8	0	33	46	0	0	491	107	900-999	20	2	0	47	38	0	422	109	900-999	16	10	1	40	42	0	553	142	900-999	23	20	4	51	44	0			
322	77	1000--	26	8	0	25	18	0	0	209	52	1000--	20	0	0	14	18	0	319	80	1000--	28	4	2	22	24	0	179	46	1000--	18	0	0	10	18	0			
YTD totals										YTD totals										YTD totals										YTD totals									
573										598										621										557									
107 79 64 155 168 0										127 60 59 174 178 0										109 83 48 194 187 0										71 91 35 186 174 0									
YTD Averages										YTD Averages										YTD Averages										YTD Averages									
572.8 105.3 89.3 56.5 150.3 171.5 0.0										570.5 105.3 81.5 50.0 171.3 161.3 1.3										610.3 105.5 94.3 50.8 173.8 186.0 0.0										594.8 87.0 96.0 47.8 181.3 182.0 0.5									

MARCH 2016										MARCH 2015										MARCH 2014										MARCH 2013									
YTD	Totals		LOA	intraHr		≤ 30 mi	≤ 50 mi	≤ 75 mi	≤ 100 mi	101+ mi	YTD	Totals		LOA	IntraHr		≤ 30 mi	≤ 50 mi	≤ 75 mi	≤ 100 mi	101+ mi	YTD	Totals		LOA	IntraHr		≤ 30 mi	≤ 50 mi	≤ 75 mi	≤ 100 mi	101+ mi							
	1	2		3	4							5	6		1	2							3	4		5	6						1	2	3	4	5	6	1
35	15	Up to 500	1	4	8	2	0	0	0	78	51	Up to 500	27	6	8	10	0	0	25	4	Up to 500	1	1	0	2	0	0	56	22	Up to 500	3	4	3	9	3	0			
198	65	500-599	15	11	2	28	9	0	0	179	68	500-599	21	6	10	19	12	0	201	68	500-599	13	15	4	25	11	0	229	80	500-599	18	11	11	27	13	0			
492	176	600-699	20	38	35	35	48	0	0	413	149	600-699	23	33	20	32	41	0	495	174	600-699	22	37	30	48	37	0	480	164	600-699	23	43	22	47	29	0			
234	71	700-799	7	13	1	14	36	0	0	266	89	700-799	19	3	3	19	45	0	254	87	700-799	19	7	2	19	40	0	247	72	700-799	10	2	3	10	47	0			
204	78	800-899	9	11	10	18	30	0	0	207	75	800-899	7	8	5	22	33	0	293	100	800-899	6	21	10	28	35	0	265	93	800-899	4	24	8	21	34	2			
310	106	900-999	21	6	2	29	48	0	0	384	130	900-999	23	24	4	44	35	0	313	104	900-999	15	15	1	32	41	0	411	129	900-999	19	17	2	50	41	0			
245	80	1000--	29	9	0	24	18	0	0	157	59	1000--	19	5	2	13	0	0	239	80	1000--	30	3	0	24	23	0	133	47	1000--	18	0	0	11	18	0			
YTD totals										YTD totals										YTD totals										YTD totals									
591										621										617										608									
102 92 58 150 189 0										139 85 50 168 179 0										106 99 47 178 187 0										95 101 49 175 185 2									
YTD Averages										YTD Averages										YTD Averages										YTD Averages									
572.7 104.7 92.7 54.0 148.7 172.7 0.0										561.3 98.0 88.7 47.0 170.3 155.7 1.7										606.7 104.3 98.0 51.7 167.0 185.7 0.0										607.3 92.3 97.7 52.0 179.7 184.7 0.7									

FEBRUARY 2016										FEBRUARY 2015										FEBRUARY 2014										FEBRUARY 2013									
YTD	Totals		LOA	intraHr		≤ 30 mi	≤ 50 mi	≤ 75 mi	≤ 100 mi	101+ mi	YTD	Totals		LOA	IntraHr		≤ 30 mi	≤ 50 mi	≤ 75 mi	≤ 100 mi	101+ mi	YTD	Totals		LOA	IntraHr		≤ 30 mi	≤ 50 mi	≤ 75 mi	≤ 100 mi	101+ mi							
	1	2		3	4							5	6		1	2							3	4		5	6						1	2	3	4	5	6	1
20	6	Up to 500	2	0	4	0	0	0	0	27	10	Up to 500	4	1	1	5	0	0	21	12	Up to 500	2	1	3	6	0	0	34	21	Up to 500	2	4	3	7	5	0			
133	65	500-599	18	20	3	15	9	0	0	111	49	500-599	10	10	12	12	5	0	133	54	500-599	12	4	9	14	15	0	149	73	500-599	14	17	8	17	17	0			
316	153	600-699	14	39	28	30	42	0	0	264	121	600-699	7	24	15	36	38	1	321	167	600-699	14	51	29	44	29	0	316	143	600-699	9	29	20	52	33	0			
163	75	700-799	5	17	2	20	31	0	0	177	88	700-799	16	10	4	19	39	0	167	79	700-799	17	7	2	15	38	0	175	83	700-799	17	6	7	15	38	0			
126	62	800-899	7	13	5	15	22	0	0	132	66	800-899	1	15	4	15	31	0	193	95	800-899	7	23	9	20	36	0	172	74	800-899	3	20	8	17	26	0			
204	101	900-999	21	3	1	31	45	0	0	254	124	900-999	20	22	4	52	24	2	209	87	900-999	11	9	1	36	31	0	282	133	900-999	20	12	3	55	43	0			
165	76	1000--	24	10	28	14	0	0	0	98	39	1000--	9	7	15	7	1	0	159	78	1000--	31	4	20	23	0	86	41	1000--	16	0	0	9	16	0				
YTD totals										YTD totals										YTD totals										YTD totals									
538										497										572										568									
91 102 43 139 163 0										67 88 40 154 144 4										94 99 52 155 172 0										81 88 49 172 178 0									
YTD Averages										YTD Averages										YTD Averages										YTD Averages									
563.5 106.0 93.0 52.0 148.0 164.5 0.0										531.5 77.5 90.5 45.5 171.5 144.0 2.5										601.5 103.5 97.5 54.0 161.5 185.0 0.0										607.0 91.0 96.0 53.5 182.0 184.5 0.0									

JANUARY 2016										JANUARY 2015										JANUARY 2014										JANUARY 2013									
YTD	Totals		LOA	intraHr		≤ 30 mi	≤ 50 mi	≤ 75 mi	≤ 100 mi	101+ mi	YTD	Totals		LOA	IntraHr		≤ 30 mi	≤ 50 mi	≤ 75 mi	≤ 100 mi	101+ mi	YTD	Totals		LOA	IntraHr		≤ 30 mi	≤ 50 mi	≤ 75 mi	≤ 100 mi	101+ mi							
	1	2		3	4							5	6		1	2							3	4		5	6						1	2	3	4	5	6	1
14	6	Up to 500	4	3	1	6	0	0	0	17	7	Up to 500	3	1	4	9	0	0	9	9	Up to 500	4	3	2	0	0	0	13	7	Up to 500	2	4	3	4	0	0			
68	500-599	14	12	11	23	8	0	0	0	62	500-599	12	15	8	21	6	0	0	79	500-599	17	13	15	15	19	0	76	500-599	23	9	11	22	11	0					
163	600-699	20	35	34	31	43	0	0	0	143	600-699	13	22	26	39	43	0	0	154	600-699	13	38	27	46	30	0	173	600-699	13	42	25	64	29	0					
88	700-799	17	9	4	26	32	0	0	0	89	700-799	17	8	2	24	38	0	0	88	700-799	22	2	19	45	0	0	92	700-799	8	13	5	9	57	0					
64	800-899	17	7	9	13	18	0	0	0	66	800-899	5	16	10	13	22	0	0	66	800-899	7	25	10	23	33	0	98	800-899	10	26	11	22	29	0					
103	900-999	20	7	2	28	46	0	0	0	130	900-999	20	22	1	61	26	0	0	122	900-999	17	13	1	46	45	0	149	900-999	27	10	3	61	48	0					
89	1000--	29	11	30	19	0	0	0	0	59	1000--	18	9	22	9	1	0	0	81	1000--	33	5	17	26	0	0	45	1000--	18	0	0	10	17	0					
YTD totals										YTD totals										YTD totals										YTD totals									
589										566										631										646									
121 84 61 157 166 0										88 93 51 189 144 1										113 96 56 168 198 0										101 104 58 192 191 0									
YTD Averages										YTD Averages										YTD Averages										YTD Averages									

Pilot Code	2016 Actual Trips PSP Earned Revenue Report Detail		Jan	Feb	Mar	Apr	May	Jun	Jul	Aug	Sep	Oct	Nov	Dec	YTD Actual Assign	Average Assgn 145/12=12.1	Italicized average = ✓✓✓ over TAL
	Actual Assign	Actual Assign	Actual Assign	Actual Assign	Actual Assign	Actual Assign	Actual Assign	Actual Assign	Actual Assign	Actual Assign	Actual Assign	Actual Assign	Actual Assign	Actual Assign	Actual Assign	Actual Assign	Actual Assign
4 ANA	Anacker, D.S.	Lic 3/27/12	12	13	6	15	11	18	15	9	16	11	11	9	146	12.2	
4 ANT	Anthony, Michael	Lic 7/24/12	15	12	15	4	11	16	13	13	14	11	18	10	152	12.7	
5 ARN	Arnold, J. E.		12	12	15	12	11	12	18	13	11	13	15	13	157	13.1	
5 BLA	Blake, M.E.		11	15	14	12	19	16	20	17	14	1	15	16	170	14.2	TEC
5 BOU	Bouma, Blair	Lic 7/28/11	16	12	16	4	14	13	15	12	8	17	23	14	164	13.7	
3 BRO	Brouillard, Dan	Lic 7/31/13	13	13	11	8	11	13	14	12	11	16	19	9	150	12.5	
5 BRU	Brusco, David	Lic 3/11/10	4	15	14	13	22	1	15	15	16	17	0	12	144	12.0	
5 BUJ	Bujacich, J.P.		17	9	9	9	22	24	15	12	19	12	15	14	177	14.8	
3 CAW	Carley, W. Bud	Lic 1/10/13	9	12	10	18	15	14	14	10	12	11	8	15	148	12.3	
5 CAI	Carlson, I.J.		13	10	7	11	16	15	10	12	4	2	13	11	124	10.3	
1 CAJ	Carstensen, J.	Lic. 9/30/15	8	5	10	9	7	16	9	15	9	11	17	14	130	10.8	
5 COE	Coe, F.A.		9	8	16	14	11	17	15	18	14	16	17	12	167	13.9	
2 COL	Coleman, S.	Lic. 8/27/14	13	6	14	4	9	15	12	18	9	16	12	14	142	11.8	
3 COR	Coryell, T.D.	Lic. 12/13/13	5	12	15	15	16	3	15	15	13	11	1	13	134	11.2	
5 EME	Emerson, L. P.		21	13	9	12	11	20	12	8	25	16	17	20	184	15.3	
4 ENF	Engstrom, F. E.	Lic 11/15/12	12	14	11	15	15	18	15	12	12	13	14	17	168	14.0	
5 ENV	Engstrom, V.		10	12	14	9	19	15	10	14	11	14	14	14	156	13.0	
2 GAL	Galvin, Jamie	Lic 11/11/14	12	14	8	11	13	14	11	12	12	11	16	15	149	12.4	
5 GIE	Giese, P. A.		13	13	14	12	3	13	19	14	14	3	13	14	145	12.1	PSP Director
5 GRD	Grobschmit, D.W.		0	0	0	0	0	0	0	0	0	1	0	0	1		PSP President
5 HAJ	Hannuksela, J.		3	21	16	16	17	7	16	19	15	18	7	9	164	13.7	
5 HAR	Harris, J. B.		11	11	13	11	12	13	12	21	8	11	11	12	146	12.2	
5 HEN	Henshaw, B. F.		18	12	7	7	14	17	21	12	12	7	16	14	157	13.1	
5 HUR	Hurt, G. D.		13	14	13	3	12	19	16	11	8	10	13	13	145	12.1	
2 JEN	Jensen, Brian	Lic. 12/22/14	15	11	4	12	13	14	13	4	15	9	14	6	130	10.8	
5 JUS	Justice, V. K.	Ret. 2/12/16	0	0	Retired 2/12										0	0.0	Comb days
5 KAL	Kalvoy, J.E.		11	6	8	12	17	17	13	8	15	13	14	8	142	11.8	
4 KEA	Kearns, J.	Lic. 1/12/12	19	11	10	14	18	13	14	9	17	18	15	18	176	14.7	
5 KEN	Kelleher, N.T.	Lic. 4/14/16				2	8	11	15	11	10	9	12	12	90	10.6	
5 KEP	Kelly, P.S.		6	14	17	15	13	2	16	13	18	17	4	12	147	12.3	PSP Director
5 KLA	Klapperich, E.C.		15	17	15	13	11	15	9	14	13	13	7	6	148	12.3	PSP Sec/Treas
2 LIC	Lichty, E.C.	Lic. 5/1/14	4	4	13	14	11	0	6	14	21	14	16	3	120	10.0	
1 LOB	Lowe, Brad	Lic. 9/23/15	13	5	16	14	8	16	8	12	13	16	10	4	135	11.3	
3 LOW	Lowery, W.W.	Lic. 2/11/13	11	9	14	14	21	15	5	21	15	20	13	6	164	13.7	
5 MAR	Marmol, E.		12	7	15	5	12	17	7	12	17	12	9	7	132	11.0	BPC/TEC Apr13
5 MAY	Mayer, D. W.		9	9	12	2	11	10	13	10	13	11	15	13	128	10.7	BPC/TEC/Exam
5 MOT	Moreno, S.		10	17	12	11	15	14	10	10	12	12	18	14	155	12.9	
5 MOR	Mork, S. E.		0	0	13	15	13	13	8	10	13	16	16	16	130	10.8	Medical
5 NEW	Newman, A. J.		11	11	12	11	19	16	16	12	16	13	15	11	163	13.6	
5 SAN	Sanders, D. A.		9	4	12	12	14	13	7	17	8	14	13	2	125	10.4	
5 SCO	Scoggins, J.		14	15	12	14	17	15	16	13	11	8	15	11	161	13.4	
5 SCR	Scragg, J.		9	8	7	9	11	7	17	17	8	19	6	12	130	10.8	TEC/PSP Director
5 SEM	Semler, J. R.		18	19	14	9	10	19	17	11	17	10	16	21	181	15.1	
5 SES	Semler, S.		25	10	20	17	8	22	14	22	16	5	16	17	192	16.0	
5 SEY	Seymour, L.		11	13	0	13	18	22	20	18	0	12	9	13	149	12.4	
5 SHA	Shaffer, D. L.		21	18	13	14	4	17	15	18	10	6	19	12	167	13.9	
5 SHJ	Shaffer, J. A.		16	14	13	17	6	16	19	18	5	1	15	16	156	13.0	
5 SHU	Shuler, M.		9	12	13	17	15	15	16	16	9	14	11	10	157	13.1	
5 SLI	Slizer, W.J.		12	4	12	17	10	11	15	13	17	11	12	21	155	12.9	
5 SOR	Soriano, D. B.		12	14	16	14	16	17	15	13	18	14	9	13	171	14.3	
5 THG	Thoreson, George		14	6	15	11	15	20	8	13	16	16	10	8	152	12.7	PSP Director
5 VON	vonBrandenfels, E. M.		14	7	9	8	8	15	15	11	12	13	9	9	130	10.8	PSP V.P./Director
5 WIG	Wiides, G. R.		15	5	13	14	19	14	10	14	14	16	17	5	156	13.0	
Total Assignments/ Month			605	547	607	584	672	725	694	687	653	617	661	610	7662		
Number of licensed PS pilots			52	52	51	52	52	52	52	52	52	52	52	52	52	147.35	12.27884615
President			1	1	1	1	1	1	1	1	1	1	1	1	1		
2016 Medical circumstances:			1	1				1									
Available to pilot			50	50	50	51	51	50	51	51	51	51	51	51	51		
Burning comp days			1	1													
# of Pilots with < 6 jobs(=Pres, ≠NFFD)			5	7	2	7	2	3	1	1	3	5	3	4			
Pilots w/>5 trips & their avg # of trips			45P: 13	43P: 12.1	48P: 12.5	44P: 12.7	49P: 13.6	47P: 15.3	50P: 13.8	50P: 13.6	48P: 13.4	46P: 13.15	48P: 13.6	47P: 12.7			
Avg assgns/avail pilot			12.1	10.9	12.1	11.5	13.2	14.5	13.6	13.5	12.8	12.1	13.0	12.0			
Cancellations			16	9	16	11	7	15	5	6	3	11	18	20	137		
PSP LOA Report (MOVES)			589	538	591	573	665	710	689	681	650	606	643	590	7525		
Average Assgn/avail pilots			11.78	10.76	11.82	11.24	13.04	14.20	13.51	13.35	12.75	11.88	12.61	11.57			

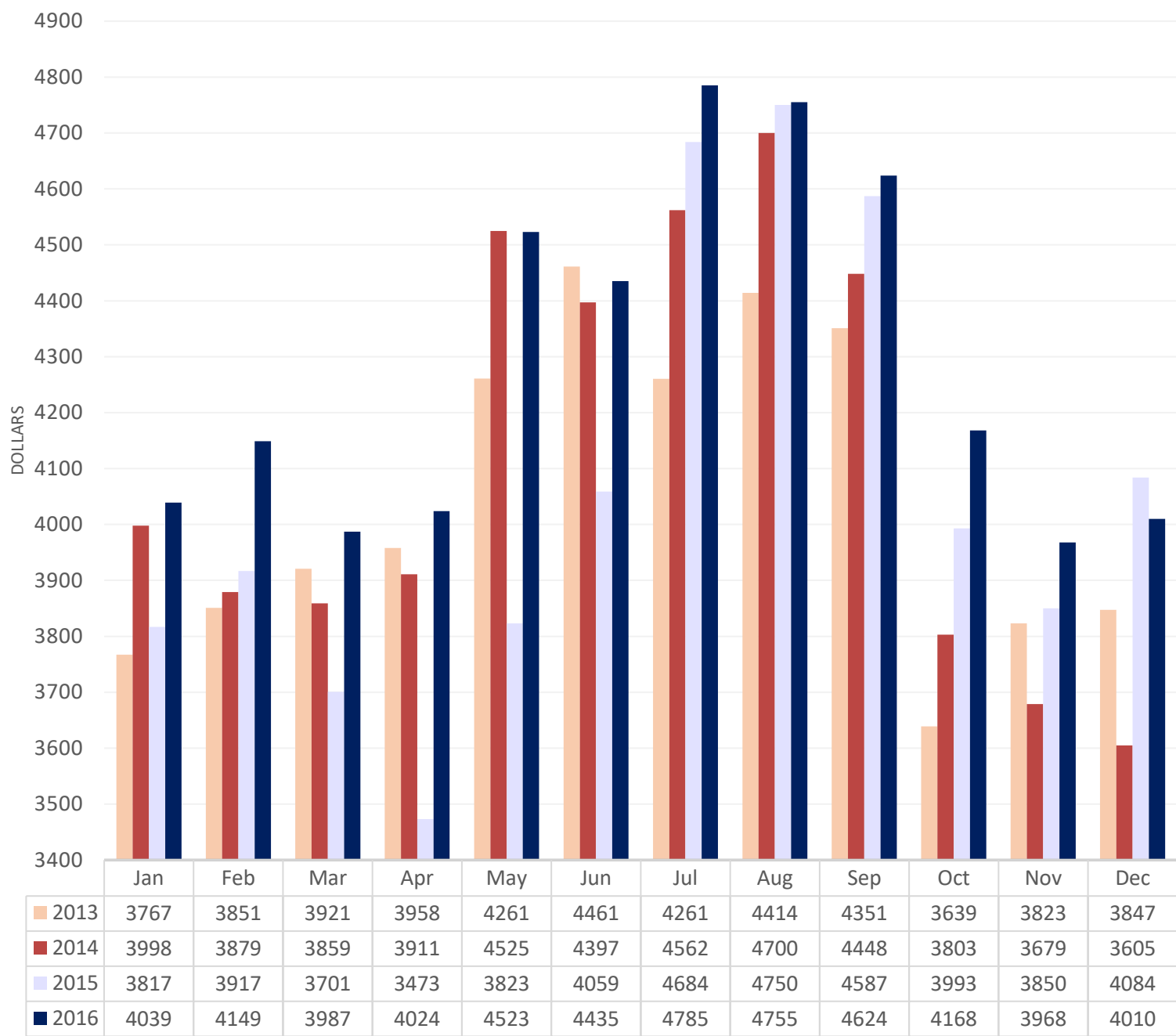
	Avg Rev per	Avg Rev per	Billed	(Transpt'n)	Total Tariff	Assignmts	Cancel
	ASSIGN	ASSIGN	minus		(Revenue)	Earned Rev	
	YTD	this Month	Transportation		\$\$ Billed	Detail	
2016							
January	\$ 4,039	\$ 4,039	2,443,846	88,464	2,532,310	605	16
February	\$ 4,305	\$ 4,149	2,269,624	79,737	2,349,361	547	9
March	\$ 4,448	\$ 3,987	2,419,890	90,643	2,510,533	607	16
April	\$ 4,048	\$ 4,024	2,350,195	87,956	2,438,151	584	11
May	\$ 4,154	\$ 4,523	3,039,515	92,009	3,131,524	672	7
June	\$ 4,208	\$ 4,435	3,215,179	100,031	3,315,210	725	15
July	\$ 4,298	\$ 4,785	3,320,803	96,653	3,417,456	694	5
August	\$ 4,360	\$ 4,755	3,261,886	89,893	3,351,779	686	5
September	\$ 4,389	\$ 4,624	3,019,483	94,080	3,113,563	653	3
October	\$ 4,368	\$ 4,168	2,571,409	94,938	\$ 2,666,346	617	11
November	\$ 4,331	\$ 3,968	2,622,922	94,799	\$ 2,717,721	661	18
December	\$ 4,305	\$ 4,010	2,446,187	87,905	\$ 2,534,092	610	20
ytd			\$ 32,980,938	\$ 1,097,108	\$ 34,078,046	7661	136
12/16-12/15 Δ	241	(74)	\$ 1,299,940	(22,297)	1,277,643	(134)	(32)

	Avg Rev per	Avg Rev per	Billed	(Transpt'n)	Total Tariff	Assignmts	Cancel
	ASSIGN	ASSIGN	minus		(Revenue)	Earned Rev	
	YTD	this Month	Transportation		\$\$ Billed	Detail	
2015							
January	\$ 3,817	\$ 3,817	2,202,588	78,813	2,281,401	577	11
February	\$ 3,864	\$ 3,917	2,024,842	72,628	2,097,470	517	16
March	\$ 4,208	\$ 3,701	2,365,096	84,102	2,449,197	639	16
April	\$ 3,717	\$ 3,473	2,153,086	89,666	2,242,751	620	22
May	\$ 3,743	\$ 3,823	2,959,296	97,134	3,056,429	774	14
June	\$ 3,807	\$ 4,059	3,210,995	120,359	3,331,354	791	20
July	\$ 3,929	\$ 4,684	2,960,243	87,317	3,047,560	632	11
August	\$ 4,037	\$ 4,750	3,291,439	98,290	3,389,728	693	9
September	\$ 4,094	\$ 4,587	2,756,533	83,259	2,839,792	601	11
October	\$ 4,083	\$ 3,993	2,659,033	97,472	\$ 2,756,505	666	13
November	\$ 4,062	\$ 3,850	2,479,703	98,603	\$ 2,578,306	644	15
December	\$ 4,064	\$ 4,084	2,618,146	111,764	\$ 2,729,910	641	10
ytd			\$ 31,680,998	\$ 1,119,405	\$ 32,800,403	7795	168
2015/2014 Δ	(64)	\$ 479	241,755	35,854	277,609	179	67

	Avg Rev per	Avg Rev per	Billed	(Transpt'n)	Total Tariff	Assignmts	Cancel
	ASSIGN	ASSIGN	minus		(Revenue)	Earned Rev	
	YTD	this Month	Transportation		\$\$ Billed	Detail	
2014							
January	3,998	3,998	2,554,575	98,762	2,653,337	639	8
February	3,941	3,879	2,261,575	82,889	2,344,464	583	11
March	3,913	3,859	2,403,969	90,895	2,494,864	623	6
April	3,913	3,911	2,464,091	85,345	2,549,436	630	9
May	4,043	4,525	3,036,561	85,787	3,122,348	671	6
June	4,107	4,397	3,033,723	95,193	3,128,916	690	8
July	4,174	4,562	3,024,434	88,977	3,113,411	663	5
August	4,244	4,700	3,219,531	97,072	3,316,603	685	8
September	4,265	4,448	2,655,500	91,878	2,747,378	597	5
October	4,219	3,803	2,430,062	98,126	2,528,188	639	12
November	4,173	3,679	2,177,805	81,264	2,259,069	592	11
December	4,128	3,605	2,177,417	87,363	2,264,780	604	12
ytd			\$ 31,439,243	1,083,551	\$ 32,522,794	7616	101
2014/2013 Δ	\$90	(\$242)	\$ (134,397)	(53,265)	\$ (187,662)	(203)	(16)

	Avg Rev per	Avg Rev per	Billed	(Transpt'n)	Total Tariff	Assignmts	Cancel
	ASSIGN	ASSIGN	minus		(Revenue)	Earned Rev	
	YTD	this Month	Transportation		\$\$ Billed	Detail	
2013							
January		3,767	2,493,701	96,600	2,590,301	662	16
February	3,806	3,851	2,229,846	82,426	2,312,272	579	11
March	3,778	3,721	2,311,037	95,730	2,406,767	621	13
April	3,820	3,958	2,212,733	74,842	2,287,575	559	2
May	3,914	4,261	2,820,632	95,699	2,916,331	662	10
June	4,013	4,461	3,028,751	90,527	3,119,278	679	5
July	4,052	4,261	3,046,277	100,482	3,146,759	715	7
August	4,102	4,414	3,112,078	93,144	3,205,222	705	9
September	4,130	4,351	2,858,510	99,071	2,957,581	657	8
October	4,078	3,639	2,481,925	105,812	2,587,737	682	13
November	4,055	3,823	2,465,837	97,211	2,563,048	645	11
December	4,038	3,847	2,512,313	105,272	2,617,585	653	12
ytd			\$ 31,573,640	1,136,816	\$ 32,710,456	7,819	117
2013/2012 Δ	97	184	\$ 955,959	145,073	\$ 1,101,032	50	(15)

Monthly Revenue per Assignment 2013 - 2016
Calendar Year



Calendar Year Timeframe Comparison
Jan 2013 - December 2016

	1/1/15 Rev neutral -- 7/1/15 ~ 2%						1/1/14 +0%			1/1/13 +3%	
JANUARY 2016 - 2013	Jan-16	YTD	ytd	Jan-15	YTD	ytd	Jan-14	YTD	ytd	Jan-13	YTD
Revenue (w/o transportation) M/YTD	\$2,443,846	\$2,443,846	11.0%	\$2,202,588	\$2,202,588	-13.8%	\$2,554,575	\$2,554,575	2.4%	\$2,493,701	\$2,493,701
Assignments M / YTD	605	605	4.9%	577	577	-9.7%	639	639	-3.5%	662	662
Revenue per assignment - M/YTD	\$4,039	\$4,039	5.8%	\$3,817	\$3,817	-4.5%	\$3,998	\$3,998	6.1%	\$3,767	\$3,767
Vessel Moves	589	589	4.1%	566	566	-10.3%	631	631	-2.0%	644	644
Revenue per vessel move - M/YTD	\$4,149	\$4,149	6.6%	\$3,891	\$3,891	-3.9%	\$4,048	\$4,048	4.6%	\$3,872	\$3,872
Tonnage Revenue - M/YTD	\$1,329,440	\$1,329,440	9.3%	\$1,216,397	\$1,216,397	-17.7%	\$1,478,353	\$1,478,353	3.6%	\$1,426,964	\$1,426,964
Tonnage Revenue per move	\$2,257	\$2,257	5.0%	\$2,149	\$2,149	-8.3%	\$2,343	\$2,343	5.7%	\$2,216	\$2,216
FEBRUARY 2016 - 2013	Feb-16	YTD		Feb-15	YTD		Feb-14	YTD		Feb-13	YTD
Revenue (w/o transportation) M/YTD	\$2,269,624	\$4,713,470	11.5%	\$2,024,842	\$4,227,430	-12.2%	\$2,261,575	\$4,816,150	2.0%	\$2,229,846	\$4,723,547
Assignments M / YTD	547	1,152	5.3%	517	1,094	-10.5%	583	1,222	-1.5%	579	1,241
Revenue per assignment - M/YTD	\$4,149	\$4,092	5.9%	\$3,917	\$3,864	-2.0%	\$3,879	\$3,941	3.5%	\$3,851	\$3,806
Vessel Moves	538	1127	5.6%	501	1067	-11.3%	572	1203	-0.7%	567	1211
Revenue per vessel move - M/YTD	\$4,219	\$4,182	5.6%	\$4,042	\$3,962	-1.0%	\$3,954	\$4,003	2.6%	\$3,933	\$3,901
Tonnage Revenue - M/YTD	\$1,296,111	\$2,625,551	11.8%	\$1,132,850	\$2,349,247	-15.8%	\$1,311,311	\$2,789,664	2.9%	\$1,285,372	\$2,712,336
Tonnage Revenue per move	\$2,409	\$2,330	5.8%	\$2,261	\$2,202	-5.1%	\$2,293	\$2,319	3.5%	\$2,267	\$2,240
MARCH 2016 - 2013	Mar-16	YTD		Mar-15	YTD		Mar-14	YTD		Mar-13	YTD
Revenue (w/o transportation) M/YTD	\$2,419,890	\$7,133,360	8.2%	\$2,365,096	\$6,592,526	-8.7%	\$2,403,969	\$7,220,119	2.6%	\$2,311,037	\$7,034,584
Assignments M / YTD	607	1,759	1.5%	639	1,733	-6.1%	623	1,845	-0.9%	621	1,862
Revenue per assignment - M/YTD	\$3,987	\$4,055	6.6%	\$3,701	\$3,804	-2.8%	\$3,859	\$3,913	3.6%	\$3,721	\$3,778
Vessel Moves	591	1718	1.7%	622	1689	-7.2%	617	1820	7.9%	475	1686
Revenue per vessel move - M/YTD	\$4,095	\$4,152	6.4%	\$3,802	\$3,903	-1.6%	\$3,896	\$3,967	-4.9%	\$4,865	\$4,172
Tonnage Revenue - M/YTD	\$1,345,308	\$3,970,859	9.9%	\$1,263,220	\$3,612,467	-13.6%	\$1,391,531	\$4,181,195	3.9%	\$1,312,137	\$4,024,473
Tonnage Revenue per move	\$2,276	\$2,311	8.1%	\$2,031	\$2,139	-6.9%	\$2,255	\$2,297	-3.8%	\$2,762	\$2,387
APRIL 2016 - 2013	Apr-16	YTD		Apr-15	YTD		Apr-14	YTD		Apr-13	YTD
Revenue (w/o transportation) M/YTD	\$2,350,195	\$9,483,555	8.4%	\$2,153,086	\$8,745,611	-9.7%	\$2,464,091	\$9,684,210	4.7%	\$2,212,733	\$9,247,316
Assignments M / YTD	584	2,343	-0.4%	620	2,353	-4.9%	630	2,475	2.2%	559	2,421
Revenue per assignment - M/YTD	\$4,024	\$4,048	8.9%	\$3,473	\$3,717	-5.0%	\$3,911	\$3,913	2.4%	\$3,958	\$3,820
Vessel Moves	573	2291	0.2%	598	2287	-6.3%	621	2441	9.0%	554	2240
Revenue per vessel move - M/YTD	\$4,102	\$4,139	8.2%	\$3,600	\$3,824	-3.6%	\$3,968	\$3,967	-3.9%	\$3,994	\$4,128
Tonnage Revenue - M/YTD	\$1,322,435	\$5,293,294	12.9%	\$1,074,585	\$4,687,052	-16.7%	\$1,444,248	\$5,625,443	5.5%	\$1,305,608	\$5,330,080
Tonnage Revenue per move	\$2,308	\$2,310	12.7%	\$1,797	\$2,049	-11.1%	\$2,326	\$2,305	-3.1%	\$2,357	\$2,380
MAY 2016 - 2013	May-16	YTD		May-15	YTD		May-14	YTD		May-13	YTD
Revenue (w/o transportation) M/YTD	\$3,039,515	\$12,523,070	7.0%	\$2,959,296	\$11,704,907	-8.0%	\$3,036,561	\$12,720,771	5.4%	\$2,820,632	\$12,067,948
Assignments M / YTD	672	3,015	-3.6%	774	3,127	-0.6%	671	3,146	2.0%	662	3,083
Revenue per assignment - M/YTD	\$4,523	\$4,154	11.0%	\$3,823	\$3,743	-7.4%	\$4,525	\$4,043	3.3%	\$4,261	\$3,914
Vessel Moves	665	2956	-3.0%	760	3047	-1.9%	664	3105	7.4%	652	2892
Revenue per vessel move - M/YTD	\$4,571	\$4,236	10.3%	\$3,894	\$3,841	-6.2%	\$4,573	\$4,097	-1.8%	\$4,326	\$4,173
Tonnage Revenue - M/YTD	\$1,832,625	\$7,125,919	14.0%	\$1,566,491	\$6,253,543	-16.9%	\$1,896,847	\$7,522,290	6.7%	\$1,717,083	\$7,047,163
Tonnage Revenue per move	\$2,756	\$2,411	17.5%	\$2,061	\$2,052	-15.3%	\$2,857	\$2,423	-0.6%	\$2,634	\$2,437
JUNE 2016 - 2013	Jun-16	YTD		Jun-15	YTD		Jun-14	YTD		Jun-13	YTD
Revenue (w/o transportation) M/YTD	\$3,215,179	\$15,738,249	5.5%	\$3,210,995	\$14,915,902	-5.3%	\$3,033,723	\$15,754,494	4.4%	\$3,028,751	\$15,096,699
Assignments M / YTD	725	3,740	-4.5%	791	3,918	2.1%	690	3,836	2.0%	679	3,762
Revenue per assignment - M/YTD	\$4,435	\$4,208	10.5%	\$4,059	\$3,807	-7.3%	\$4,397	\$4,107	2.3%	\$4,461	\$4,013
Vessel Moves	710	3666	-3.9%	769	3816	0.8%	682	3787	6.2%	673	3565
Revenue per vessel move - M/YTD	\$4,528	\$4,293	9.8%	\$4,176	\$3,909	-6.0%	\$4,448	\$4,160	-1.8%	\$4,500	\$4,235
Tonnage Revenue - M/YTD	\$1,923,132	\$9,049,051	12.1%	\$1,816,296	\$8,069,839	-14.2%	\$1,888,492	\$9,410,782	5.0%	\$1,911,566	\$8,958,729
Tonnage Revenue per move	\$2,709	\$2,468	16.7%	\$2,362	\$2,115	-14.9%	\$2,769	\$2,485	-1.1%	\$2,840	\$2,513
JULY 2016 - 2013	Jul-16	YTD		Jul-15	YTD		Jul-14	YTD		Jul-13	YTD
Revenue (w/o transportation) M/YTD	\$3,320,803	\$19,059,052	6.6%	\$2,960,243	\$17,876,145	-4.8%	\$3,024,434	\$18,778,928	3.5%	\$3,046,278	\$18,142,977
Assignments M / YTD	694	4,434	-2.5%	632	4,550	1.1%	663	4,499	0.5%	715	4,477
Revenue per assignment - M/YTD	\$4,785	\$4,298	9.4%	\$4,684	\$3,929	-5.9%	\$4,562	\$4,174	3.0%	\$4,261	\$4,052
Vessel Moves	689	4355	-1.8%	621	4437	-0.1%	655	4442	4.0%	707	4272
Revenue per vessel move - M/YTD	\$4,820	\$4,376	8.6%	\$4,767	\$4,029	-4.7%	\$4,617	\$4,228	-0.5%	\$4,309	\$4,247
Tonnage Revenue - M/YTD	\$2,062,503	\$11,111,554	12.7%	\$1,793,733	\$9,863,572	-12.8%	\$1,894,514	\$11,305,296	4.1%	\$1,905,487	\$10,864,216
Tonnage Revenue per move	\$2,993	\$2,551	14.8%	\$2,888	\$2,223	-12.7%	\$2,892	\$2,545	0.1%	\$2,695	\$2,543
AUGUST 2016 - 2013	Aug-16	YTD		Aug-15	YTD		Aug-14	YTD		Aug-13	YTD
Revenue (w/o transportation) M/YTD	\$3,261,886	\$22,320,938	5.4%	\$3,291,439	\$21,167,584	-3.8%	\$3,219,532	\$21,998,460	3.5%	\$3,112,078	\$21,255,055
Assignments M / YTD	686	5,120	-2.3%	693	5,243	1.1%	685	5,184	0.0%	705	5,182
Revenue per assignment - M/YTD	\$4,755	\$4,360	8.0%	\$4,750	\$4,037	-4.9%	\$4,700	\$4,244	3.5%	\$4,414	\$4,102
Vessel Moves	681	5036	-1.7%	684	5121	0.0%	677	5119	3.1%	695	4967
Revenue per vessel move - M/YTD	\$4,790	\$4,432	7.2%	\$4,812	\$4,133	-3.8%	\$4,756	\$4,297	0.4%	\$4,478	\$4,279
Tonnage Revenue - M/YTD	\$2,012,001	\$13,123,555	10.5%	\$2,008,943	\$11,872,515	-11.2%	\$2,071,239	\$13,376,535	4.3%	\$1,960,258	\$12,824,474
Tonnage Revenue per move	\$2,954	\$2,606	12.4%	\$2,937	\$2,318	-11.3%	\$3,059	\$2,613	1.2%	\$2,821	\$2,582
SEPTEMBER 2016 - 2013	Sep-16	YTD		Sep-15	YTD		Sep-14	YTD		Sep-13	YTD
Revenue (w/o transportation) M/YTD	\$3,019,483	\$25,340,421	5.9%	\$2,756,533	\$23,924,117	-3.0%	\$2,655,500	\$24,653,960	2.2%	\$2,858,511	\$24,113,566
Assignments M / YTD	653	5,773	-1.2%	601	5,844	1.1%	597	5,781	-1.0%	657	5,839
Revenue per assignment - M/YTD	\$4,624	\$4,389	7.2%	\$4,587	\$4,094	-4.0%	\$4,448	\$4,265	3.3%	\$4,351	\$4,130
Vessel Moves	650	5686	-0.4%	590	5711	0.0%	592	5711	1.7%	649	5616
Revenue per vessel move - M/YTD	\$4,645	\$4,457	6.4%	\$4,672	\$4,189	-3.0%	\$4,486	\$4,317	0.5%	\$4,404	\$4,294
Tonnage Revenue - M/YTD	\$1,849,337	\$14,972,892	10.7%	\$1,655,487	\$13,528,001	-9.8%	\$1,628,467	\$15,005,002	3.0%	\$1,742,072	\$14,566,546
Tonnage Revenue per move	\$2,845	\$2,633	11.2%	\$2,806	\$2,369	-9.8%	\$2,751	\$2,627	1.3%	\$2,684	\$2,594
OCTOBER 2016 - 2013	Oct-16	YTD		Oct-15	YTD		Oct-14	YTD		Oct-13	YTD
Revenue (w/o transportation) M/YTD	\$2,571,409	\$27,911,830	5.0%	\$2,659,033	\$26,583,150	-1.8%	\$2,430,062	\$27,084,022	1.8%	\$2,481,926	\$26,595,492
Assignments M / YTD	617	6,390	-1.8%	666	6,510	1.4%	639	6,420	-1.5%	682	6,521
Revenue per assignment - M/YTD	\$4,168	\$4,368	7.0%	\$3,993	\$4,083	-3.2%	\$3,803	\$4,219	3.4%	\$3,639	\$4,078
Vessel Moves	606	6292	-1.1%	653	6364	0.4%	627	6338	0.8%	669	6285
Revenue per vessel move - M/YTD	\$4,243	\$4,436	6.2%	\$4,072	\$4,177	-2.3%	\$3,876	\$4,273	1.0%	\$3,710	\$4,232
Tonnage Revenue - M/YTD	\$1,484,111	\$16,457,003	9.9%	\$1,450,149	\$14,978,150	-8.5%	\$1,366,727	\$16,371,729	2.9%	\$1,346,376	\$15,912,922
Tonnage Revenue per move	\$2,449	\$2,616	11.1%	\$2,221	\$2,354	-8.9%	\$2,180	\$2,583	2.0%	\$2,013	\$2,532
NOVEMBER 2016 - 2013	Nov-16	YTD		Nov-15	YTD		Nov-14	YTD		Nov-13	YTD
Revenue (w/o transportation) M/YTD	\$2,622,922	\$30,534,752	5.1%	\$2,479,703	\$29,062,853	-0.7%	\$2,177,805	\$29,261,826	0.7%	\$2,465,836	\$29,061,328
Assignments M / YTD	661	7,051	-1.4%	644	7,154	2.0%	592	7,012	-2.1%	645	7,166
Revenue per assignment - M/YTD	\$3,968	\$4,331	6.6%	\$3,850	\$4,062	-2.7%	\$3,679	\$4,173	2.9%	\$3,823	\$4,055
Vessel Moves	643	6935	-0.8%	629	6993	1.1%	581	6919	0.0%	633	6918
Revenue per vessel move - M/YTD	\$4,079	\$4,403	5.9%	\$3,942	\$4,156	-1.7%	\$3,748	\$4,229	0.7%	\$3,895	\$4,201
Tonnage Revenue - M/YTD	\$1,484,173	\$17,941,176	9.9%	\$1,344,787	\$16,322,937	-7.3%	\$1,243,491	\$17,615,219	1.8%	\$1,393,372	\$17,306,294
Tonnage Revenue per move	\$2,308	\$2,587	10.8%	\$2,138	\$2,334	-8.3%	\$2,140	\$2,546	1.8%	\$2,201	\$2,502
DECEMBER 2											

SUMMARY OF PSP

Earned Revenue Rpt Calendar Year	2016 9 months YTD		Oct-16	Nov-16	Dec-16	2016 YTD		2015 9 months YTD		Oct-15	Nov-15	Dec-15	2015 YTD		2014 9 months YTD		Oct-14	Nov-14	Dec-14	2014 YTD	
--Counters & Misc Totals--																					
Seattle Assigns	1,742	-10.2%	169	157	149	2,216	-9.1%	1,940	8.2%	181	182	134	2,437	3.7%	1,793	-1.6%	178	200	180	2,351	
Ship Assigns	5,773	-1.2%	617	661	610	7,660	-1.7%	5,844	1.1%	666	644	641	7,795	2.4%	5,781	-1.0%	639	592	604	7,616	
Pilot Boat Assigns	4,147	1.5%	432	485	459	5,523	1.4%	4,084	-6.2%	480	445	439	5,448	-3.7%	4,355	-3.5%	452	423	428	5,658	
Tonnage Surcharge/Moves	5,686	-0.4%	606	643	590	7,525	-1.3%	5,711	0.0%	653	629	631	7,624	1.5%	5,711	-0.7%	627	581	592	7,511	
Surcharge Revenue	14,972,892	10.7%	1,484,111	1,484,173	1,404,181	19,345,357	9.1%	13,528,002	-9.8%	1,450,149	1,344,787	1,404,847	17,727,785	-6.0%	15,005,002	3.0%	1,366,727	1,243,491	1,245,415	18,860,635	
--Source of Revenue Breakdown--																					
LOA/Zone (*)	6,673,541	1.7%	696,467	721,477	666,745	8,758,230	1.1%	6,562,361	-11.0%	736,018	693,793	673,140	8,665,312	-9.0%	7,373,382	-0.4%	780,476	677,456	688,751	9,520,065	
Harbor Shift (*)	763,255	4.0%	80,666	87,306	76,221	1,007,448	0.6%	733,912	3.8%	93,020	85,438	88,959	1,001,329	3.3%	707,123	19.4%	93,943	84,928	83,153	969,147	
Transportation (**)	819,467	1.0%	94,938	94,799	87,905	1,097,109	-2.0%	811,567	-0.6%	97,472	98,603	111,764	1,119,406	3.3%	816,797	-1.4%	98,126	81,264	87,363	1,083,550	
BC Surcharge (***)	309,729	8.9%	33,712	25,284	21,070	389,795	3.9%	284,445	-3.6%	29,498	29,498	31,605	375,046	-7.3%	294,980	-17.6%	42,140	25,284	42,140	404,544	
Bridge Transit (***)	76,484	4.7%	3,786	7,548	6,532	94,350	0.7%	73,042	2.9%	10,578	6,302	3,768	93,690	-3.5%	70,980	1.6%	6,538	14,322	5,286	97,126	
Waterway (***)	532,532	-0.5%	51,300	54,093	52,136	690,061	-4.3%	535,477	-2.9%	65,873	62,890	56,468	720,708	1.2%	551,665	11.8%	63,593	50,673	45,980	711,911	
Tonnage Surcharge (***)	14,972,892	10.7%	1,484,111	1,484,173	1,404,181	19,345,357	9.1%	13,528,001	-9.8%	1,450,149	1,344,787	1,404,847	17,727,784	-6.0%	15,005,002	3.0%	1,366,727	1,243,491	1,245,415	18,860,635	
Cancellations (***)	53,186	-20.9%	8,324	10,999	14,668	87,177	-3.4%	67,216	69.3%	7,770	9,423	5,839	90,248	42.3%	39,710	-20.0%	6,710	7,607	9,402	63,429	
Compass Adj (***)	3,949	10.0%	718	718	359	5,744	23.1%	3,590	-28.6%	1,077			4,667	-38.1%	5,026	-6.7%	1,077	359	1,077	7,539	
Standby/Sail Delay (***)	215,935	-51.3%	42,232	40,570	29,646	328,383	-45.6%	443,678	68.8%	89,050	32,880	38,104	603,712	69.5%	262,915	11.4%	31,784	38,360	23,016	356,075	
Slow Down (***)	184,483	-13.6%	5,498	4,658	3,014	197,653	-22.4%	213,446	279.7%	1,370	10,412	29,336	254,564	253.0%	56,215	-12.0%	6,028	6,576	3,288	72,107	
Salmon Bay (***)	4,852	228.5%	844		211	5,907	299.9%	1,477	-53.3%				1,477	-65.0%	3,165	275.0%	844		211	4,220	
Lk Union/Washington (***)	2,882		-375		164	2,671		0					0		0					0	
Sea Trials (***)	15,210	-1.1%	1,014		0	16,224	-91.4%	15,379	-35.9%	1,014	43,940	128,102	188,435	548.3%	23,998	-12.9%	2,028	3,042	0	29,068	
Delayed Arr & Dock Delay (***)	87,972	113.5%	10,412	17,316	11,508	127,208	208.7%	41,208	42.2%				41,208	42.2%	28,984	12.1%				28,984	
Miscellaneous (***)	14		2,364		0	2,378	-86.2%	0		6,576	5,480	5,206	17,262	18.9%	0		4,218	3,288	7,014	14,520	
Pilot Boat (***)	1,443,504	1.6%	150,336	168,780	159,732	1,922,352	1.4%	1,420,884	515.6%	167,040	154,860	152,772	1,895,556	532.1%	230,815	4.4%	23,956	22,419	22,684	299,874	
Total-Source Section	26,159,886	5.8%	2,666,347	2,717,721	2,534,092	34,078,046	3.9%	24,735,683	-2.9%	2,756,505	2,578,306	2,729,910	32,800,404	0.9%	25,470,757	2.1%	2,528,188	2,259,069	2,264,780	32,522,794	
-----Revenue-----																					
Mileage (*)	7,436,796	1.9%	777,133	808,783	742,966	9,765,678	1.0%	7,296,273	-9.7%	829,038	779,231	762,099	9,666,641	-7.8%	8,080,505	1.1%	874,419	762,384	771,904	10,489,212	
Trans (**)	819,466	1.0%	94,938	94,799	87,905	1,097,108	-2.0%	811,567	-0.6%	97,472	98,603	111,764	1,119,406	3.3%	816,797	-1.4%	98,126	81,264	87,363	1,083,550	
Special (***)	17,903,624	7.7%	1,794,276	1,814,139	1,703,221	23,215,260	5.5%	16,627,843	0.3%	1,829,995	1,700,472	1,856,047	22,014,357	5.1%	16,573,455	2.8%	1,555,643	1,415,421	1,405,513	20,950,032	
Total -Revenue Section	26,159,886	5.8%	2,666,347	2,717,721	2,534,092	34,078,046	3.9%	24,735,683	-2.9%	2,756,505	2,578,306	2,729,910	32,800,404	0.9%	25,470,757	2.1%	2,528,188	2,259,069	2,264,780	32,522,794	
Revenue/Assignment, no Trans	4,389	7.2%	4,168	3,968	4,010	4,306	5.9%	4,094	-4.0%	3,993	3,850	4,084	4,064	-1.5%	4,265	3.3%	3,803	3,679	3,605	4,128	
Other Stats																					
Pilot Boat Charges	1,443,504	1.6%	150,336	168,780	159,732	1,922,352	1.4%	1,420,884	515.6%	167,040	154,860	152,772	1,895,556	532.1%	230,815	4.4%	23,956	22,419	22,684	299,874	
Pilot Boat Assignments	4147	1.5%	432	485	459	5523	1.4%	4084	-6.2%	480	445	439	5448	-3.7%	4355	-3.5%	452	423	428	5658	
Avg	348		348	348	348	348	0.0%	348		348	348	348	348		53		53	53	53	53	
Tonnage Surcharge Revenue	14,972,892	10.7%	1,484,111	1,484,173	1,404,181	19,345,357	9.1%	13,528,002	-9.8%	1,450,149	1,344,787	1,404,847	17,727,785	-6.0%	15,005,002	3.0%	1,366,727	1,243,491	1,245,415	18,860,635	
Tonnage Surcharge Charge #	5,686	-0.4%	606	643	590	7,525	-1.3%	5,711	0.0%	653	629	631	7,624	1.5%	5,711	-0.7%	627	581	592	7,511	
Avg Tonnage Surcharge/Move	2,633	11.2%	2,449	2,308	2,380	2,571	10.6%	2,369	-9.8%	2,221	2,138	2,226	2,325	-7.4%	2,627	3.7%	2,180	2,140	2,104	2,511	

CALENDAR YEAR	2017	Month	Revenue(Trans)	Assignments	RPA for month	YTD Rev	YTD Assgn	YTD RPA
		Jan						
		Feb						
		Mar						
		Apr						
		May						
		Jun						
CALENDAR YEAR	2016	Month	Revenue(Trans)	Assignments	RPA for month	YTD Rev	YTD Assgn	YTD RPA
		Jan	2,443,846	605	4,039			
		Feb	2,269,624	547	4,149	4,713,470	1,152	4,092
		Mar	2,419,890	607	3,987	7,133,360	1,759	4,055
		Apr	2,350,195	584	4,024	9,483,555	2,343	4,048
		May	3,039,515	672	4,523	12,523,070	3,015	4,154
		Jun	3,215,179	725	4,435	15,738,249	3,740	4,208
		Jul	3,320,803	694	4,785	19,059,052	4,434	4,298
		Aug	3,261,886	686	4,755	22,320,938	5,120	4,360
		Sep	3,019,483	653	4,624	25,340,421	5,773	4,389
		Oct	2,571,409	617	4,168	27,911,830	6,390	4,368
		Nov	2,622,922	661	3,968	30,534,752	7,051	4,331
		Dec	2,446,187	610	4,010	32,980,939	7,661	4,305
		32,980,939	7,661			(134)		
CALENDAR YEAR	2015	Month	Revenue(Trans)	Assignments	RPA for month	YTD Rev	YTD Assgn	YTD RPA
		Jan	2,202,588	577	3,817			
		Feb	2,024,842	517	3,917	4,227,430	1,094	\$3,864
		Mar	2,365,096	639	3,701	6,592,526	1,733	\$3,804
		Apr	2,153,086	620	3,473	8,745,612	2,353	\$3,717
		May	2,959,296	774	3,823	11,704,908	3,127	\$3,743
		Jun	3,210,995	791	4,059	14,915,903	3,918	\$3,807
		Jul	2,960,243	632	4,684	17,876,146	4,550	\$3,929
		Aug	3,291,439	693	4,750	21,167,585	5,243	\$4,037
		Sep	2,756,533	601	4,587	23,924,118	5,844	\$4,094
		Oct	2,659,033	666	3,993	26,583,151	6,510	\$4,083
		Nov	2,479,703	644	3,850	29,062,854	7,154	\$4,062
		Dec	2,618,146	641	4,084	31,681,000	7,795	\$4,064
		31,681,000	7,795			179		
CALENDAR YEAR	2014	Month	Revenue(Trans)	Assignments	RPA for month	YTD Rev	YTD Assgn	YTD RPA
		Jan	2,554,575	639	3,998			
		Feb	2,261,575	583	3,879	4,816,150	1,222	3,941
		Mar	2,403,969	623	3,859	7,220,119	1,845	3,913
		Apr	2,464,091	630	3,911	9,684,210	2,475	3,913
		May	3,036,561	671	4,525	12,720,771	3,146	4,043
		Jun	3,033,723	690	4,397	15,754,494	3,836	4,107
		Jul	3,024,434	663	4,562	18,778,928	4,499	4,174
		Aug	3,219,532	685	4,700	21,998,460	5,184	4,244
		Sep	2,655,500	597	4,448	24,653,960	5,781	4,265
		Oct	2,430,062	639	3,803	27,084,022	6,420	4,219
		Nov	2,177,805	592	3,679	29,261,827	7,012	\$4,173
		Dec	2,177,417	604	3,605	31,439,244	7,616	\$4,128
		31,439,244	7,616			(203)		
CALENDAR YEAR	2013	Month	Revenue(Trans)	Assignments	RPA for month	YTD Rev	YTD Assgn	YTD RPA
		Jan	2,493,701	662	3,767			
		Feb	2,229,846	579	3,851	4,723,547	1,241	3,806
		Mar	2,311,037	621	3,721	7,034,584	1,862	3,778
		Apr	2,212,733	559	3,958	9,247,317	2,421	3,820
		May	2,820,632	662	4,261	12,067,949	3,083	3,914
		Jun	3,028,751	679	4,461	15,096,700	3,762	4,013
		Jul	3,046,278	715	4,261	18,142,978	4,477	4,052
		Aug	3,112,078	705	4,414	21,255,056	5,182	4,102
		Sep	2,858,511	657	4,351	24,113,567	5,839	4,130
		Oct	2,481,926	682	3,639	26,595,493	6,521	4,078
		Nov	2,465,836	645	3,823	29,061,329	7,166	\$4,055
		Dec	2,512,313	653	3,847	31,573,642	7,819	\$4,038
		31,573,642	7,819					

TARIFF YEAR	2016	Month	Revenue(Trans)	Assignments	RPA for month	YTD Rev	YTD Assgn	YTD RPA
		Jul	3,320,803	694	\$ 4,785			
		Aug	3,261,886	686	\$ 4,755	6,582,689	1,380	\$4,770
		Sep	3,019,483	653	\$ 4,624	9,602,172	2,033	\$4,723
		Oct	2,571,409	617	\$ 4,168	12,173,581	2,650	\$4,594
		Nov	2,622,922	661	\$ 3,968	14,796,503	3,311	\$4,469
		Dec	2,446,187	610	\$ 4,010	17,242,690	3,921	\$4,398
		17,242,690						
TARIFF YEAR	2015	Month	Revenue(Trans)	Assignments	RPA for month	YTD Rev	YTD Assgn	YTD RPA
		Jul	2,960,243	632	4,684			
		Aug	3,291,439	693	4,750	6,251,682	1,325	\$4,718
		Sep	2,756,533	601	4,587	9,008,215	1,926	\$4,677
		Oct	2,659,033	666	3,993	11,667,248	2,592	\$4,501
		Nov	2,479,703	644	3,850	14,146,951	3,236	\$4,372
		Dec	2,618,146	641	4,084	16,765,097	3,877	\$4,324
		Jan	2,443,846	605	4,039	19,208,943	4,482	\$4,286
		Feb	2,269,624	547	4,149	21,478,567	5,029	\$4,271
		Mar	2,419,890	607	3,987	23,898,457	5,636	\$4,240
		Apr	2,350,195	584	4,024	26,248,652	6,220	\$4,220
		May	3,039,515	672	4,523	29,288,167	6,892	\$4,250
	2016	Jun	3,215,179	725	4,435	32,503,346	7,617	\$4,267
			32,503,346	7,617				
TARIFF YEAR	2014	Month	Revenue(Trans)	Assignments	RPA for month	YTD Rev	YTD Assgn	YTD RPA
		Jul	3,024,434	663	4,562			
		Aug	3,219,532	685	4,700	6,243,966	1,348	\$4,632
		Sep	2,655,500	597	4,448	8,899,466	1,945	\$4,576
		Oct	2,430,062	639	3,803	11,329,528	2,584	\$4,384
		Nov	2,177,805	592	3,679	13,507,333	3,176	\$4,253
		Dec	2,177,417	604	3,605	15,684,750	3,780	\$4,149
		Jan	2,202,588	577	3,817	17,887,338	4,357	\$4,105
		Feb	2,024,842	517	3,917	19,912,180	4,874	\$4,085
		Mar	2,365,096	639	3,701	22,277,276	5,513	\$4,041
		Apr	2,153,086	620	3,473	24,430,362	6,133	\$3,983
		May	2,959,296	774	3,823	27,389,658	6,907	\$3,965
	2015	Jun	3,210,995	791	4,059	30,600,653	7,698	\$3,975
			30,600,653	7,698				
TARIFF YEAR	2013	Month	Revenue(Trans)	Assignments	RPA for month	YTD Rev	YTD Assgn	YTD RPA
		Jul	3,046,278	715	4,261			
		Aug	3,112,078	705	4,414	6,158,356	1,420	\$4,337
		Sep	2,858,511	657	4,351	9,016,867	2,077	\$4,341
		Oct	2,481,926	682	3,639	11,498,793	2,759	\$4,168
		Nov	2,465,836	645	3,823	13,964,629	3,404	\$4,102
		Dec	2,512,313	653	3,847	16,476,942	4,057	\$4,061
		Jan	2,554,575	639	3,998	19,031,517	4,696	\$4,053
		Feb	2,261,575	583	3,879	21,293,092	5,279	\$4,034
		Mar	2,403,969	623	3,859	23,697,061	5,902	\$4,015
		Apr	2,464,091	630	3,911	26,161,152	6,532	\$4,005
		May	3,036,561	671	4,525	29,197,713	7,203	\$4,054
	2014	Jun	3,033,723	690	4,397	32,231,436	7,893	\$4,084
			32,231,436	7,893				
TARIFF YEAR	2012	Month	Revenue(Trans)	Assignments	RPA for month	YTD Rev	YTD Assgn	YTD RPA
		Jul	3,152,810	728	4,331			
		Aug	3,193,924	721	4,430	6,346,734	1,449	\$4,380
		Sep	2,866,720	661	4,337	9,213,454	2,110	\$4,367
		Oct	2,411,757	629	3,834	11,625,211	2,739	\$4,244
		Nov	2,255,805	600	3,760	13,881,016	3,339	\$4,157
		Dec	2,289,593	625	3,663	16,170,609	3,964	\$4,079
		Jan	2,493,701	662	3,767	18,664,310	4,626	\$4,035
		Feb	2,229,846	579	3,851	20,894,156	5,205	\$4,014
		Mar	2,311,037	621	3,721	23,205,193	5,826	\$3,983
		Apr	2,212,733	559	3,958	25,417,926	6,385	\$3,981
		May	2,820,632	662	4,261	28,238,558	7,047	\$4,007
	2013	Jun	3,028,751	679	4,461	31,267,309	7,726	\$4,047
			31,267,309	7,726				