

Revised

WASHINGTON UTILITIES AND TRANSPORTATION COMMISSION

|                      |   |                              |
|----------------------|---|------------------------------|
|                      | ) | DOCKET NO. TR- <u>161012</u> |
|                      | ) |                              |
| City of Monroe, WA   | ) | PETITION FOR INSTALLATION OF |
| _____                | ) | SIDEWALKS AT A HIGHWAY-RAIL  |
| Petitioner,          | ) | GRADE CROSSING IN MONROE     |
|                      | ) | WA AT FRYELANDS BOULEVARD    |
| vs.                  | ) |                              |
| BNSF Railway Company | ) |                              |
| _____                | ) |                              |
| Respondent           | ) | USDOT CROSSING # 084571B     |
|                      | ) |                              |
| .....                | ) |                              |

The Petitioner asks the Washington Utilities and Transportation Commission to approve installation of sidewalks at a highway-rail grade crossing.

*Section 1 – Petitioner’s Information*

|   |
|---|
| City of Monroe, WA                                    |
| Petitioner  |
| _____   |
| Signature   |
| _____   |
| 806 W. Main St  |
| Street Address  |
| _____   |
| Monroe, WA 98272                                      |
| City, State and Zip Code                              |
| _____   |
| SAME  |
| Mailing Address, if different than the street address |
| _____   |
| James L. Gardner                                      |
| Contact Person Name                                   |
| _____   |
| (360) 863-4542 jgardner@monroewa.gov                  |
| Contact Phone Number and Email Address                |
| _____   |

*Section 2 – Respondent's Information*

BNSF Railway Company

Respondent

2454 Occidental Ave S. #2D

Street Address

Seattle, WA 98134

City, State and Zip Code

SAME

Mailing Address, if different than the street address

Richard Wagner

Contact Person Name

(206) 625-6152 Richard.Wagner@BNSF.com

Contact Phone Number and Email Address

*Section 3 – Crossing Location*

1. Name of highway/roadway Fryelands Boulevard

2. Name of railroad BNSF Railway Company

3. USDOT Crossing No. 084571B

4. Located in the SW 1/4 of the NW 1/4 of Sec. 35, Twp. 28, Range 6E W.M.

5. GPS location, if known \_\_\_\_\_

6. Railroad mile post (nearest tenth) 1770.659

7. City Monroe County Snohomish

*Section 4 – Current Crossing Traffic*

1. Type of public road at the crossing     State     County     City  
 Port     State Park     Other \_\_\_\_\_

2. Average daily vehicle traffic over the tracks 9,467    Vehicle speed limit 37

3. Number of lanes 4

4. Trucks (commercial vehicles) are what percent of average daily traffic 9.1%

5. Number of school buses over the crossing each day 4

6. Name of railroad(s) operating at crossing BNSF Railway Company and Amtrak  
\_\_\_\_\_  
\_\_\_\_\_

7. Type of railroad at crossing     Common Carrier     Logging     Industrial  
 Passenger     Excursion

8. Type of tracks at crossing     Main Line    Siding or Spur

9. Number of tracks at crossing 1

10. Average daily train traffic, freight 24

Authorized freight train speed 45    Operated freight train speed 45

11. Average daily train traffic, passenger 4

Authorized passenger train speed 45    Operated passenger train speed 45

### *Section 5 – Justification*

1. Provide the following information:

- a. Provide a description of the type of sidewalks proposed.
  - b. Describe who will maintain the sidewalks.
  - c. Attach a proposed diagram or design of the crossing including the sidewalks.
  - d. Describe changes to the active warning devices, if affected by the project.
- 

- a) The RR Crossing Sidewalks project will install curb, gutter and 5' sidewalk from the end of the existing sidewalk south of the RR tracks to the US2 bus stop north of the RR tracks. Additional concrete panel will need to be installed along the tracks for the crossing. The proposed concrete curb, gutter and sidewalk will extend to a point within 10' of the panels. Asphalt will be placed between the panels and the sidewalk to provide a continuous ADA compliant path across the tracks. This project is necessary to connect the two sections of sidewalk and keep pedestrians from walking within the roadway between these two sections. This project will be paid with Community Development Block Grant funds and City funds.
- b) The RR will maintain the concrete panels adjacent to the track. The City of Monroe will maintain the concrete sidewalks and asphalt transition.
- c) See attached exhibit A
- d) No changes to the active warning devices are proposed. The new sidewalk will be blocked by the crossing arm counter-weight as the crossing arm descends to block the traffic lane.

Section 6 – Waiver of Hearing by Respondent

**Waiver of Hearing**

The undersigned represents the Respondent in the petition to install sidewalks at the following crossing.

USDOT Crossing # 084571B

We have investigated the conditions at the crossing. We are satisfied the conditions are the same as described by the Petitioner in this docket. We agree installation of sidewalks should be made and consent to a decision by the commission without a hearing.

Dated at SEATTLE, Washington, on the 16<sup>th</sup> day of August, 20 16.

BNSF Railway  
Printed name of Respondent

[Signature]  
Signature of Respondent's Representative

Man. Public Projects NW Division  
Title

BNSF Railway  
Company Name

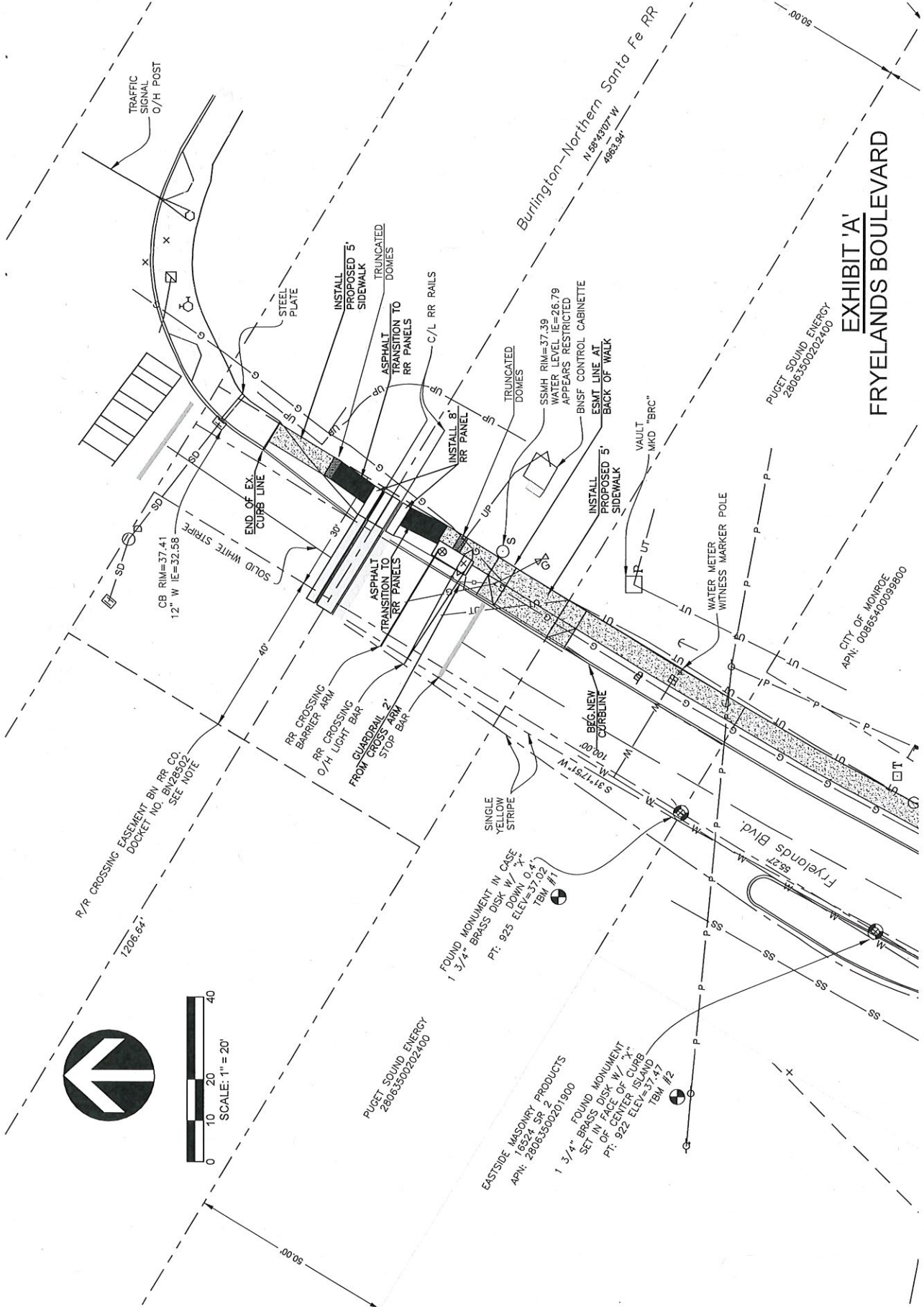
206.625.6152 / Richard.Wagner@BNSF.com  
Phone number and e-mail address

2454 OCCIDENTAL AVENUE <sup>56004</sup> SEE 20

SEATTLE, WA 98107-98134  
Mailing address



SCALE: 1" = 20'



# EXHIBIT 'A' FRYELANDS BOULEVARD

R/R CROSSING EASEMENT BN RR CO.  
DOCKET NO. BN28502.  
SEE NOTE

PUGET SOUND ENERGY  
2806350202-00

EASTSIDE MASSOIRY PRODUCTS  
16924 SR 2  
APN: 2806350201800

PUGET SOUND ENERGY  
2806350202-00

CITY OF MONROE  
APN: 00885400039800

FOUND MONUMENT IN CASE  
1 3/4" BRASS DISK W/ "X"  
DOWN 0.4"  
PT: 923 ELEV=37.02  
TBM #1

1 3/4" FOUND MONUMENT  
SET IN FACE OF CURB  
OF CENTER ISLAND  
PT: 922 ELEV=37.37  
TBM #2

Burlington-Northern Santa Fe RR  
N 58°43'07" W  
4683.94'

Fryelands Blvd  
5527'

WATER METER  
WITNESS MARKER POLE

SSMH RIM=37.39  
WATER LEVEL IE=26.79  
APPEARS RESTRICTED  
BNSF CONTROL CABINETTE  
ESMT LINE AT  
BACK OF WALK

VAULT  
MKD "BRC"

TRAFFIC  
SIGNAL  
O/H POST

INSTALL PROPOSED 5'  
SIDEWALK  
STEEL PLATE

INSTALL PROPOSED 5'  
SIDEWALK  
TRUNCATED  
DOMES

ASPHALT  
TRANSITION TO  
RR PANELS  
C/L RR RAILS

INSTALL 8'  
RR PANEL

END OF EX  
CURB LINE

SOLID WHITE STRIPE

RR CROSSING  
BARRIER ARM

RR CROSSING  
O/H LIGHT BAR

GUARDRAIL  
FROM CROSS ARM  
STOP BAR

ASPHALT  
TRANSITION TO  
RR PANELS

TRUNCATED  
DOMES

INSTALL PROPOSED 5'  
SIDEWALK

BEG NEW  
CURBLINE

SINGLE  
YELLOW  
STRIPES

VAULT

WATER METER  
WITNESS MARKER POLE

RR CROSSING  
BARRIER ARM

RR CROSSING  
O/H LIGHT BAR

GUARDRAIL  
FROM CROSS ARM  
STOP BAR

ASPHALT  
TRANSITION TO  
RR PANELS

TRUNCATED  
DOMES

INSTALL PROPOSED 5'  
SIDEWALK

BEG NEW  
CURBLINE

SINGLE  
YELLOW  
STRIPES

VAULT

WATER METER  
WITNESS MARKER POLE

RR CROSSING  
BARRIER ARM

RR CROSSING  
O/H LIGHT BAR

GUARDRAIL  
FROM CROSS ARM  
STOP BAR

ASPHALT  
TRANSITION TO  
RR PANELS

TRUNCATED  
DOMES

INSTALL PROPOSED 5'  
SIDEWALK

BEG NEW  
CURBLINE

SINGLE  
YELLOW  
STRIPES

VAULT

WATER METER  
WITNESS MARKER POLE

RR CROSSING  
BARRIER ARM

RR CROSSING  
O/H LIGHT BAR

GUARDRAIL  
FROM CROSS ARM  
STOP BAR

ASPHALT  
TRANSITION TO  
RR PANELS

TRUNCATED  
DOMES

INSTALL PROPOSED 5'  
SIDEWALK

BEG NEW  
CURBLINE

SINGLE  
YELLOW  
STRIPES

VAULT

WATER METER  
WITNESS MARKER POLE

RR CROSSING  
BARRIER ARM

RR CROSSING  
O/H LIGHT BAR

GUARDRAIL  
FROM CROSS ARM  
STOP BAR

ASPHALT  
TRANSITION TO  
RR PANELS

TRUNCATED  
DOMES

INSTALL PROPOSED 5'  
SIDEWALK

BEG NEW  
CURBLINE

SINGLE  
YELLOW  
STRIPES

VAULT

WATER METER  
WITNESS MARKER POLE

RR CROSSING  
BARRIER ARM

RR CROSSING  
O/H LIGHT BAR

GUARDRAIL  
FROM CROSS ARM  
STOP BAR

ASPHALT  
TRANSITION TO  
RR PANELS

TRUNCATED  
DOMES

INSTALL PROPOSED 5'  
SIDEWALK

BEG NEW  
CURBLINE

SINGLE  
YELLOW  
STRIPES

VAULT

WATER METER  
WITNESS MARKER POLE

RR CROSSING  
BARRIER ARM

RR CROSSING  
O/H LIGHT BAR

GUARDRAIL  
FROM CROSS ARM  
STOP BAR

ASPHALT  
TRANSITION TO  
RR PANELS

TRUNCATED  
DOMES

INSTALL PROPOSED 5'  
SIDEWALK

BEG NEW  
CURBLINE

SINGLE  
YELLOW  
STRIPES

VAULT

WATER METER  
WITNESS MARKER POLE

RR CROSSING  
BARRIER ARM

RR CROSSING  
O/H LIGHT BAR

GUARDRAIL  
FROM CROSS ARM  
STOP BAR

ASPHALT  
TRANSITION TO  
RR PANELS

TRUNCATED  
DOMES

INSTALL PROPOSED 5'  
SIDEWALK

BEG NEW  
CURBLINE

SINGLE  
YELLOW  
STRIPES

VAULT

WATER METER  
WITNESS MARKER POLE

RR CROSSING  
BARRIER ARM

RR CROSSING  
O/H LIGHT BAR

GUARDRAIL  
FROM CROSS ARM  
STOP BAR

ASPHALT  
TRANSITION TO  
RR PANELS

TRUNCATED  
DOMES

INSTALL PROPOSED 5'  
SIDEWALK

BEG NEW  
CURBLINE

SINGLE  
YELLOW  
STRIPES

VAULT

WATER METER  
WITNESS MARKER POLE

RR CROSSING  
BARRIER ARM

RR CROSSING  
O/H LIGHT BAR

GUARDRAIL  
FROM CROSS ARM  
STOP BAR

ASPHALT  
TRANSITION TO  
RR PANELS

TRUNCATED  
DOMES

INSTALL PROPOSED 5'  
SIDEWALK

BEG NEW  
CURBLINE

SINGLE  
YELLOW  
STRIPES

VAULT

WATER METER  
WITNESS MARKER POLE

RR CROSSING  
BARRIER ARM

RR CROSSING  
O/H LIGHT BAR

GUARDRAIL  
FROM CROSS ARM  
STOP BAR

ASPHALT  
TRANSITION TO  
RR PANELS

TRUNCATED  
DOMES

INSTALL PROPOSED 5'  
SIDEWALK

BEG NEW  
CURBLINE

SINGLE  
YELLOW  
STRIPES

VAULT

WATER METER  
WITNESS MARKER POLE

RR CROSSING  
BARRIER ARM

RR CROSSING  
O/H LIGHT BAR

GUARDRAIL  
FROM CROSS ARM  
STOP BAR

ASPHALT  
TRANSITION TO  
RR PANELS

TRUNCATED  
DOMES

INSTALL PROPOSED 5'  
SIDEWALK

BEG NEW  
CURBLINE

SINGLE  
YELLOW  
STRIPES

VAULT

WATER METER  
WITNESS MARKER POLE

RR CROSSING  
BARRIER ARM

RR CROSSING  
O/H LIGHT BAR

GUARDRAIL  
FROM CROSS ARM  
STOP BAR

ASPHALT  
TRANSITION TO  
RR PANELS

TRUNCATED  
DOMES

INSTALL PROPOSED 5'  
SIDEWALK

BEG NEW  
CURBLINE

SINGLE  
YELLOW  
STRIPES

VAULT

WATER METER  
WITNESS MARKER POLE

RR CROSSING  
BARRIER ARM

RR CROSSING  
O/H LIGHT BAR

GUARDRAIL  
FROM CROSS ARM  
STOP BAR

ASPHALT  
TRANSITION TO  
RR PANELS

TRUNCATED  
DOMES

INSTALL PROPOSED 5'  
SIDEWALK

BEG NEW  
CURBLINE

SINGLE  
YELLOW  
STRIPES

VAULT

WATER METER  
WITNESS MARKER POLE

RR CROSSING  
BARRIER ARM

RR CROSSING  
O/H LIGHT BAR

GUARDRAIL  
FROM CROSS ARM  
STOP BAR

ASPHALT  
TRANSITION TO  
RR PANELS

TRUNCATED  
DOMES

INSTALL PROPOSED 5'  
SIDEWALK

BEG NEW  
CURBLINE

SINGLE  
YELLOW  
STRIPES

VAULT

WATER METER  
WITNESS MARKER POLE

RR CROSSING  
BARRIER ARM

RR CROSSING  
O/H LIGHT BAR

GUARDRAIL  
FROM CROSS ARM  
STOP BAR

ASPHALT  
TRANSITION TO  
RR PANELS

TRUNCATED  
DOMES

INSTALL PROPOSED 5'  
SIDEWALK

BEG NEW  
CURBLINE

SINGLE  
YELLOW  
STRIPES

VAULT

WATER METER  
WITNESS MARKER POLE

RR CROSSING  
BARRIER ARM

RR CROSSING  
O/H LIGHT BAR

GUARDRAIL  
FROM CROSS ARM  
STOP BAR

ASPHALT  
TRANSITION TO  
RR PANELS

TRUNCATED  
DOMES

INSTALL PROPOSED 5'  
SIDEWALK

BEG NEW  
CURBLINE

SINGLE  
YELLOW  
STRIPES

VAULT

WATER METER  
WITNESS MARKER POLE

RR CROSSING  
BARRIER ARM

RR CROSSING  
O/H LIGHT BAR

GUARDRAIL  
FROM CROSS ARM  
STOP BAR

ASPHALT  
TRANSITION TO  
RR PANELS

TRUNCATED  
DOMES

INSTALL PROPOSED 5'  
SIDEWALK

BEG NEW  
CURBLINE

SINGLE  
YELLOW  
STRIPES

VAULT

WATER METER  
WITNESS MARKER POLE

RR CROSSING  
BARRIER ARM

RR CROSSING  
O/H LIGHT BAR

GUARDRAIL  
FROM CROSS ARM  
STOP BAR

ASPHALT  
TRANSITION TO  
RR PANELS

TRUNCATED  
DOMES

INSTALL PROPOSED 5'  
SIDEWALK

BEG NEW  
CURBLINE

SINGLE  
YELLOW  
STRIPES

VAULT

WATER METER  
WITNESS MARKER POLE

RR CROSSING  
BARRIER ARM

RR CROSSING  
O/H LIGHT BAR

GUARDRAIL  
FROM CROSS ARM  
STOP BAR

ASPHALT  
TRANSITION TO  
RR PANELS

TRUNCATED  
DOMES

INSTALL PROPOSED 5'  
SIDEWALK

BEG NEW  
CURBLINE

SINGLE  
YELLOW  
STRIPES

VAULT

WATER METER  
WITNESS MARKER POLE

RR CROSSING  
BARRIER ARM

RR CROSSING  
O/H LIGHT BAR

GUARDRAIL  
FROM CROSS ARM  
STOP BAR

ASPHALT  
TRANSITION TO  
RR PANELS

TRUNCATED  
DOMES

INSTALL PROPOSED 5'  
SIDEWALK

BEG NEW  
CURBLINE

SINGLE  
YELLOW  
STRIPES

VAULT

WATER METER  
WITNESS MARKER POLE

RR CROSSING  
BARRIER ARM

RR CROSSING  
O/H LIGHT BAR

GUARDRAIL  
FROM CROSS ARM  
STOP BAR

ASPHALT  
TRANSITION TO  
RR PANELS

TRUNCATED  
DOMES

INSTALL PROPOSED 5'  
SIDEWALK

BEG NEW  
CURBLINE

SINGLE  
YELLOW  
STRIPES

VAULT

WATER METER  
WITNESS MARKER POLE

RR CROSSING  
BARRIER ARM

RR CROSSING  
O/H LIGHT BAR

GUARDRAIL  
FROM CROSS ARM  
STOP BAR

ASPHALT  
TRANSITION TO  
RR PANELS

TRUNCATED  
DOMES

INSTALL PROPOSED 5'  
SIDEWALK

BEG NEW  
CURBLINE

SINGLE  
YELLOW  
STRIPES

VAULT

WATER METER  
WITNESS MARKER POLE

RR CROSSING  
BARRIER ARM

RR CROSSING  
O/H LIGHT BAR