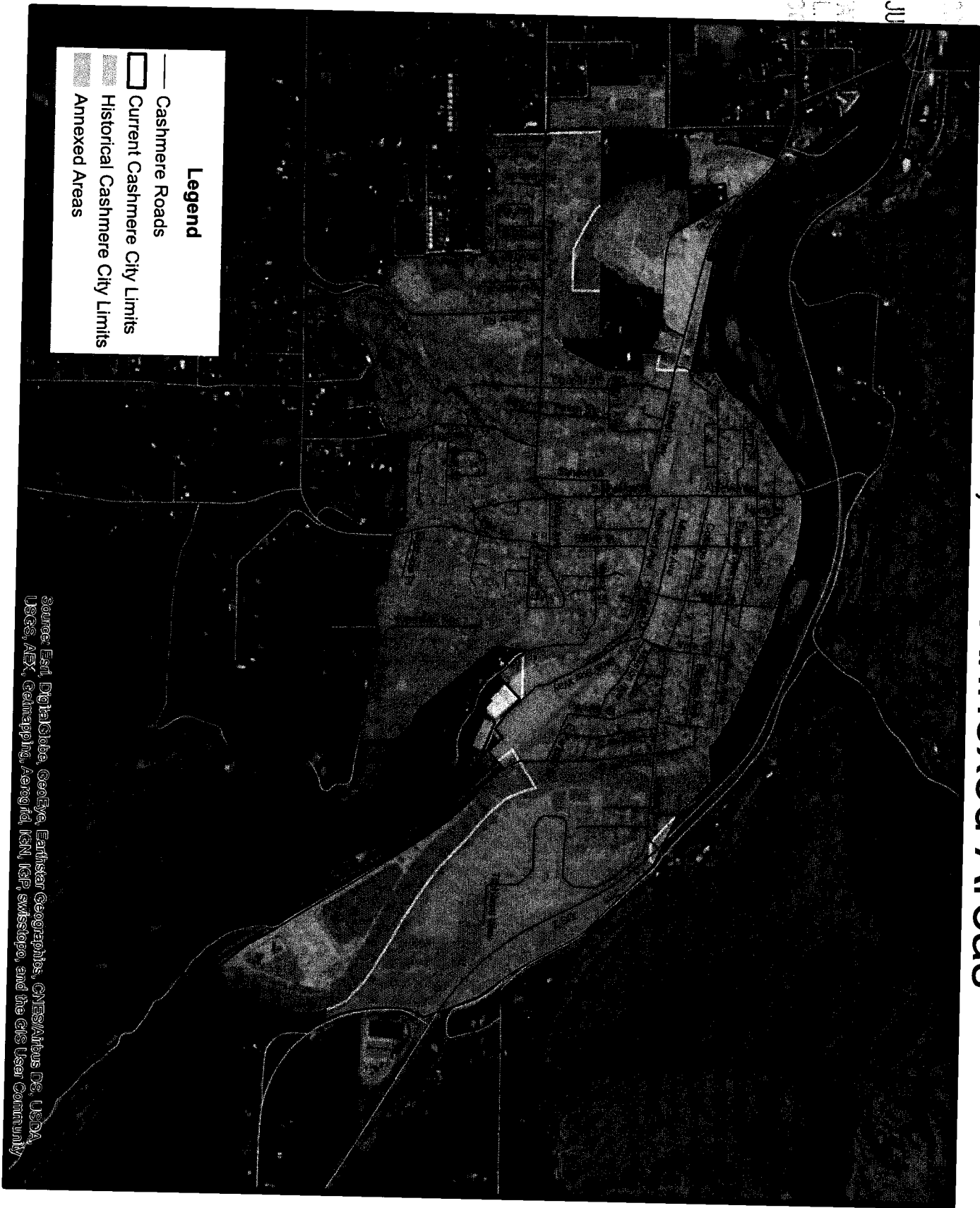


Cashmere, WA Annexed Areas

2016 JUL

511
0111
01



Legend

- Cashmere Roads
- Current Cashmere City Limits
- Historical Cashmere City Limits
- Annexed Areas

Source: Esri, DigitalGlobe, GeoEye, Earthstar Geographics, CNES/Airbus DS, USDA, USGS, AEX, Getmapping, Aerogrid, IGN, IGP, swisstopo, and the GIS User Community

Exhibit "B-1
Ordinance No. 1153

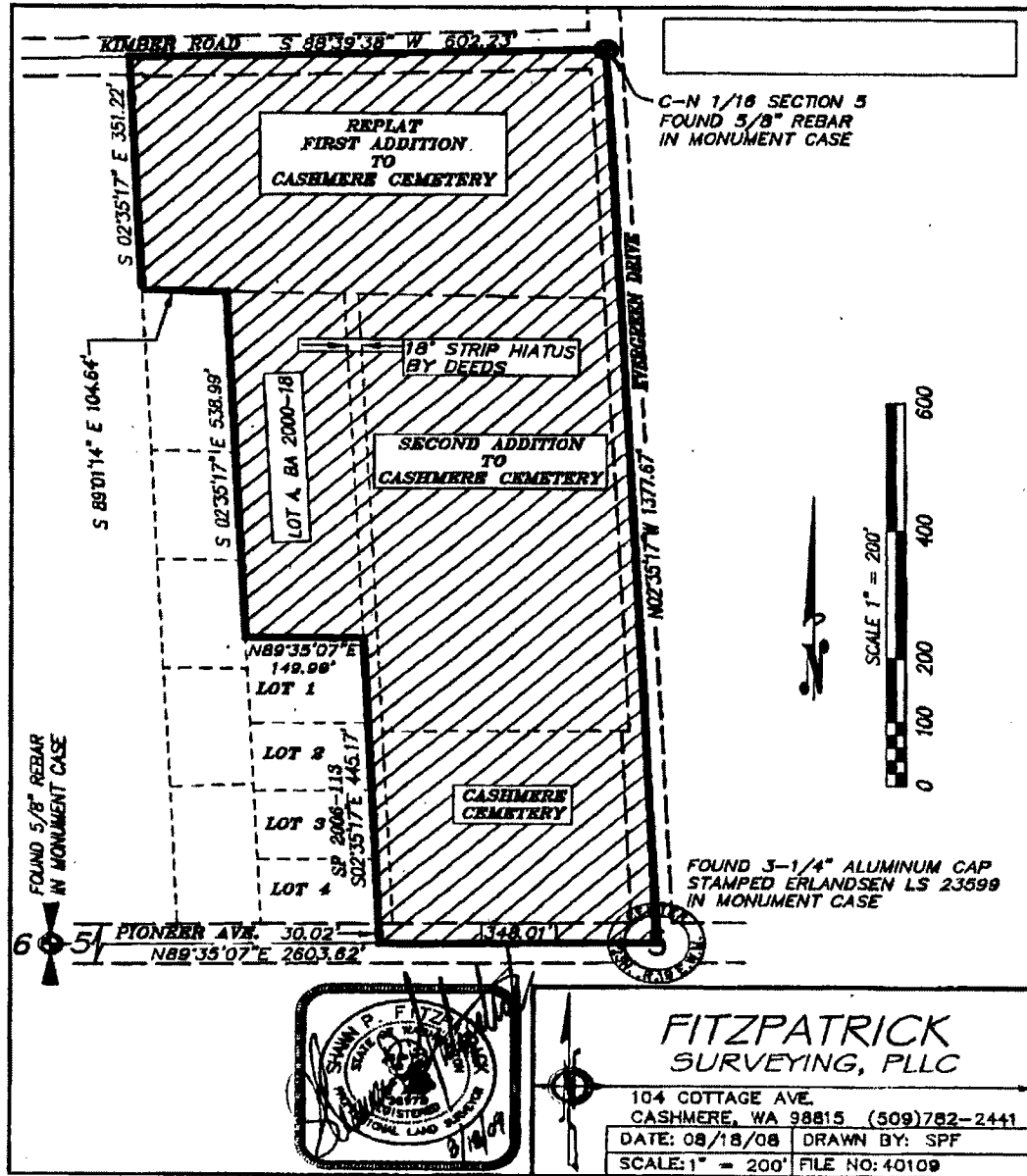


Exhibit "C-1"
Ordinance 1153

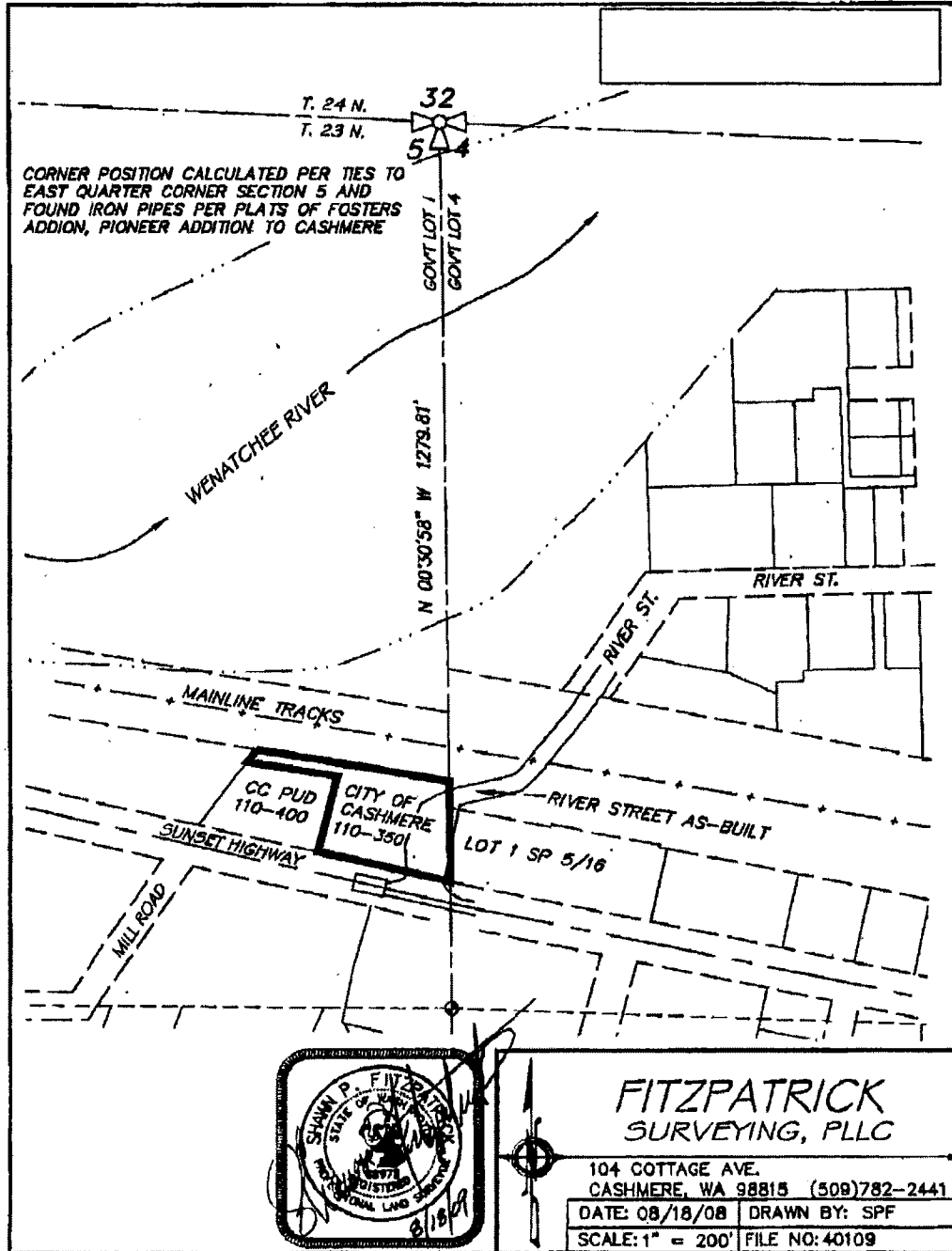


Exhibit "A-1
Ordinance No. 1156

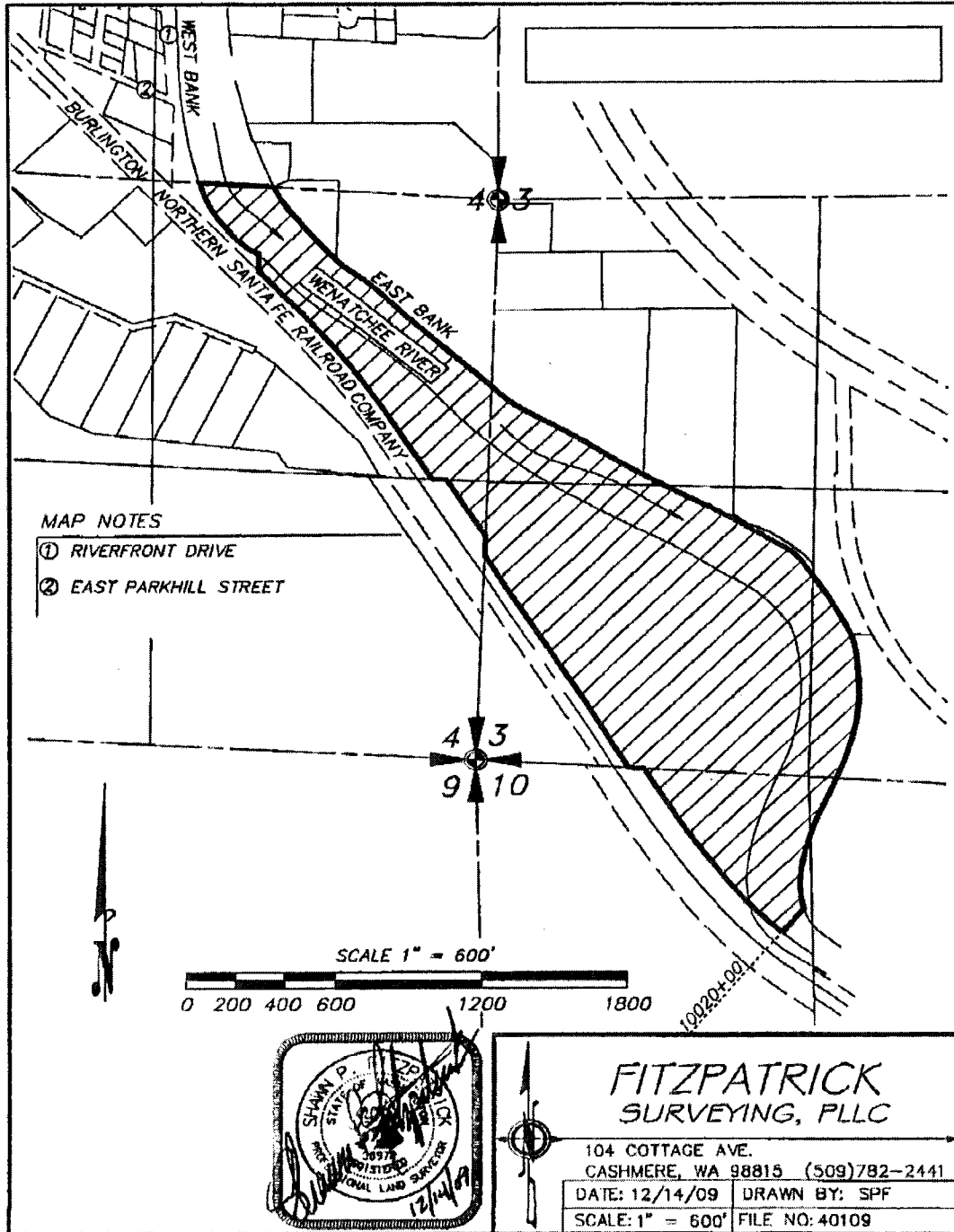


Exhibit "B-1
Ordinance No. 1156

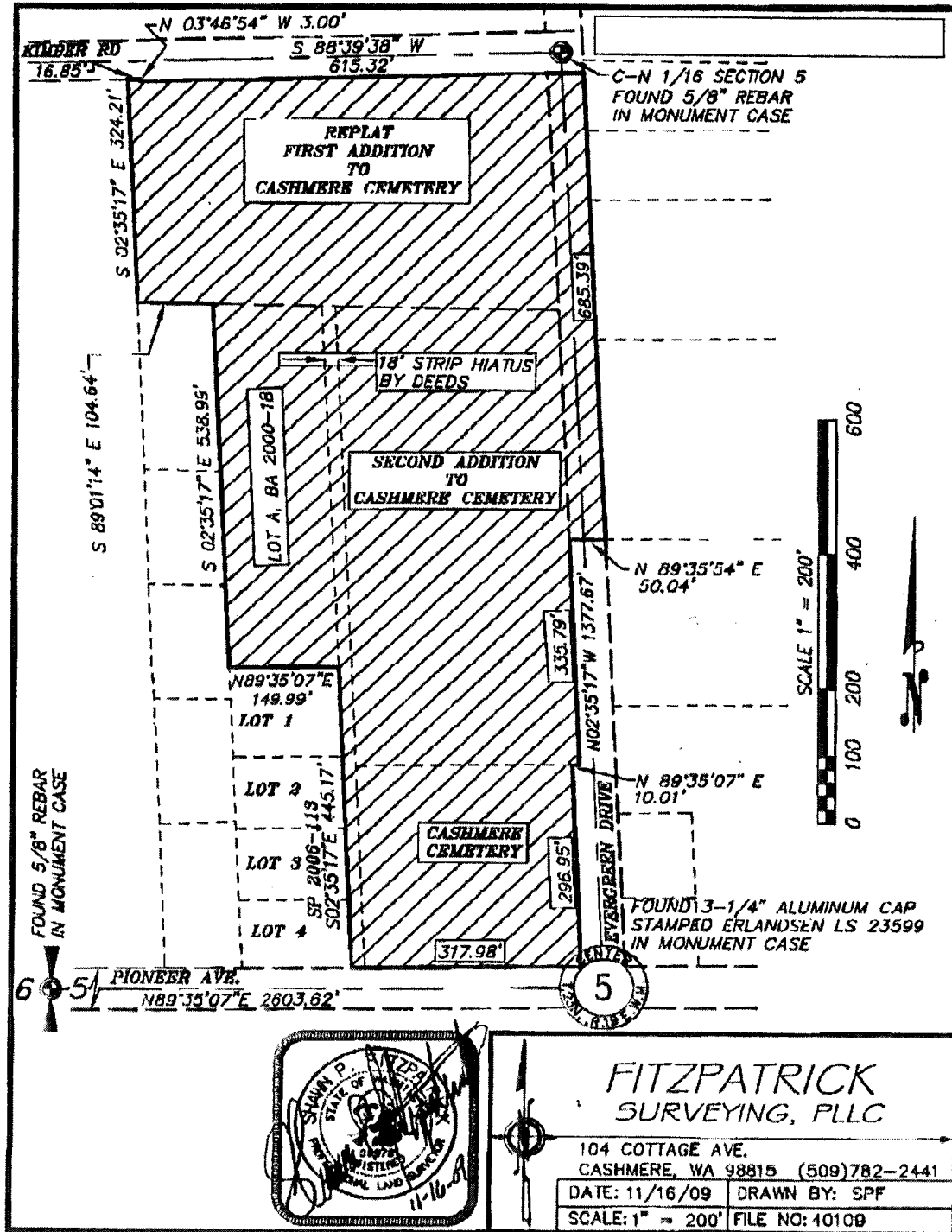


Exhibit "C-1"
Ordinance 1156

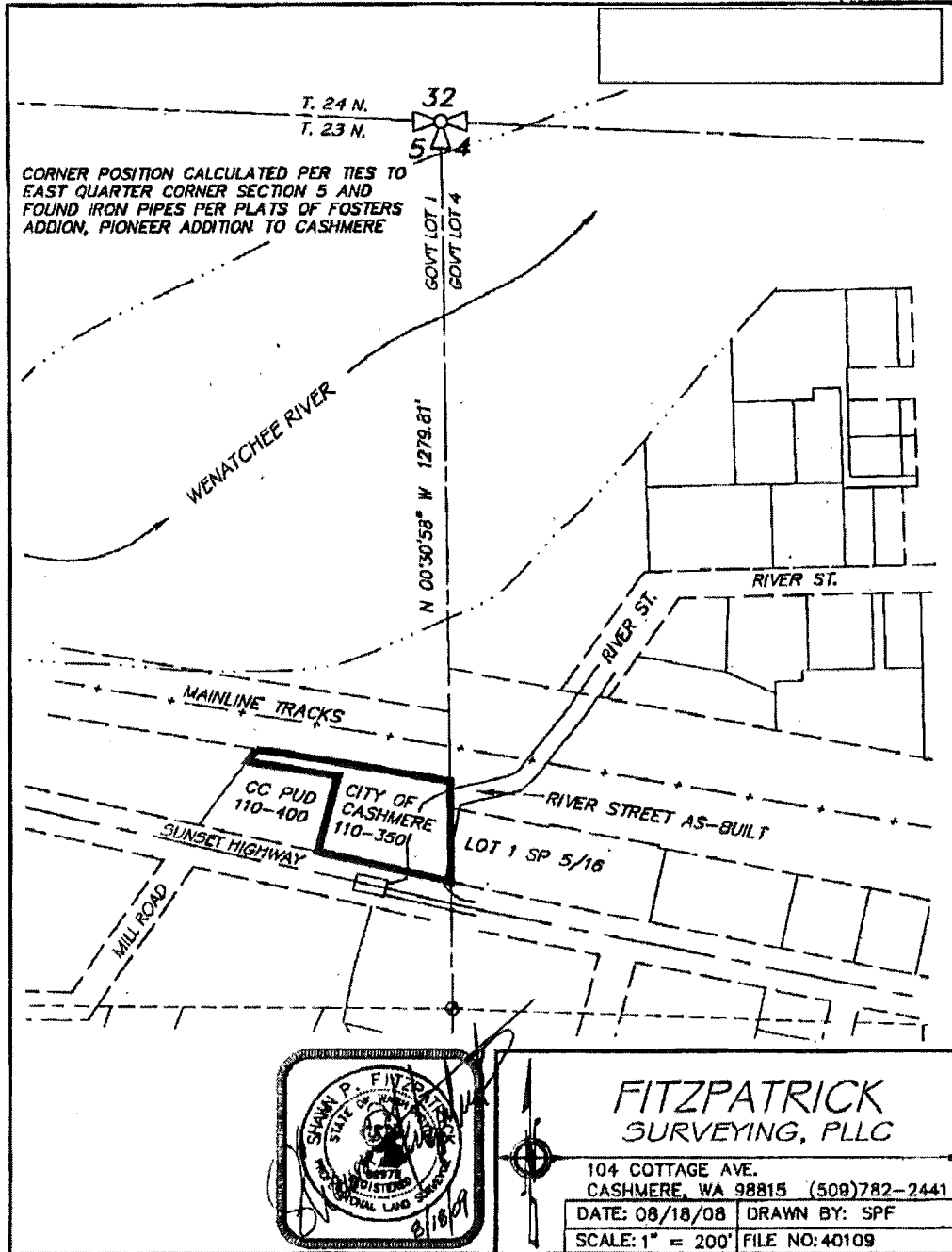
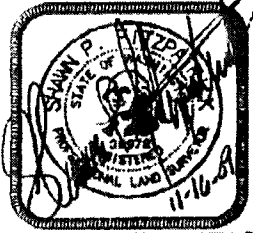
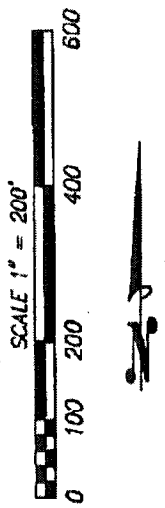
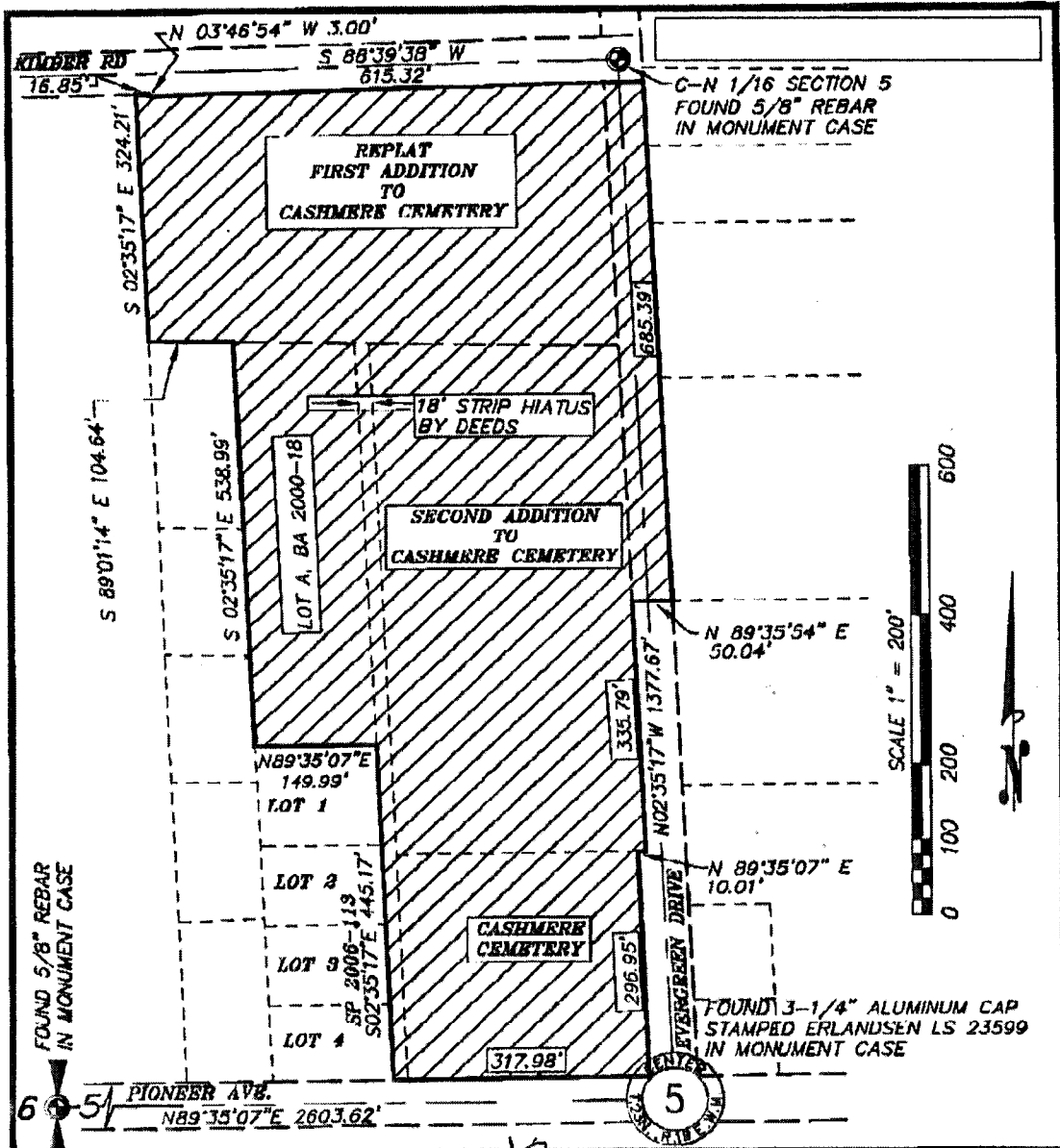
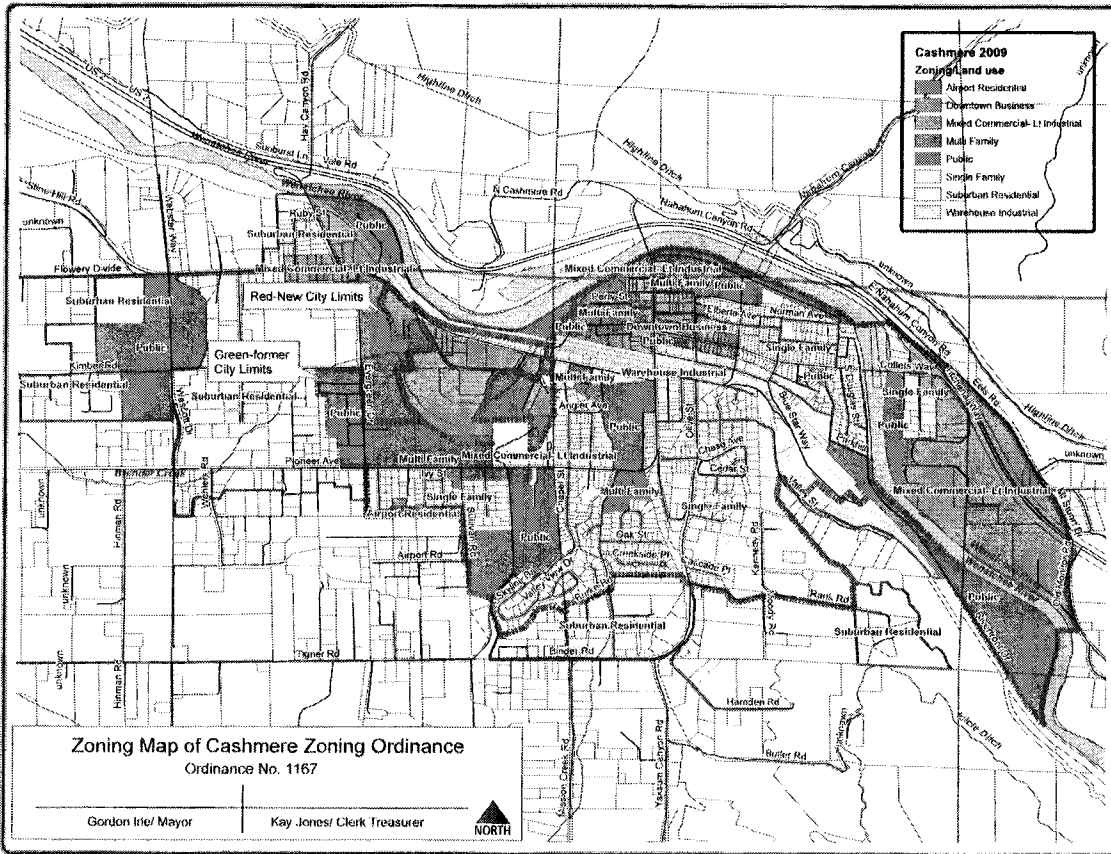
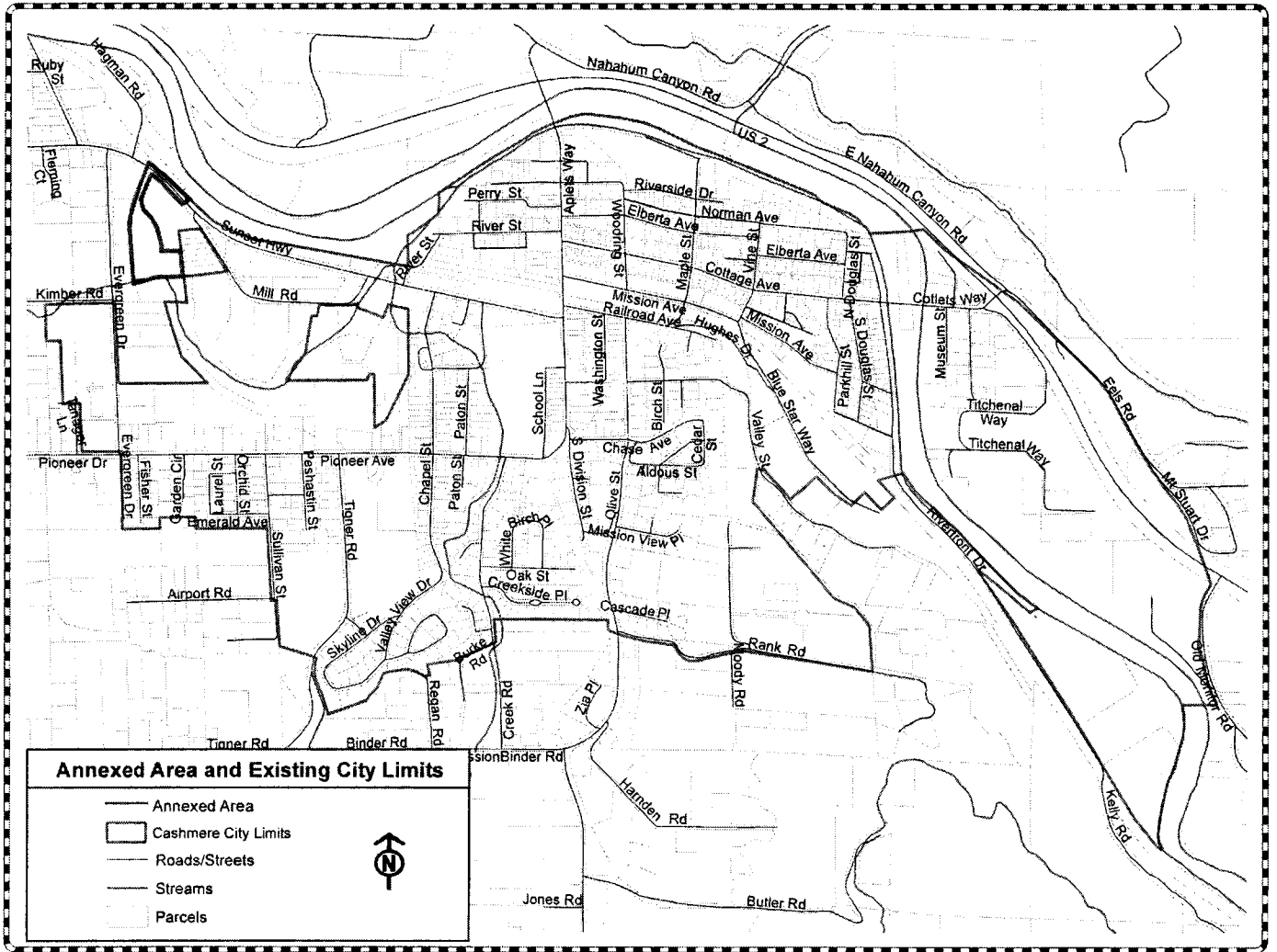


Exhibit "B-1
Ordinance No. 1164



FITZPATRICK SURVEYING, PLLC
 104 COTTAGE AVE.
 CASHMERE, WA 98815 (509)782-2441
 DATE: 11/16/09 DRAWN BY: SPF
 SCALE: 1" = 200' FILE NO: 10109





Annexed Area and Existing City Limits

- Annexed Area
- Cashmere City Limits
- Roads/Streets
- Streams
- - - Parcels




Exhibit "B"

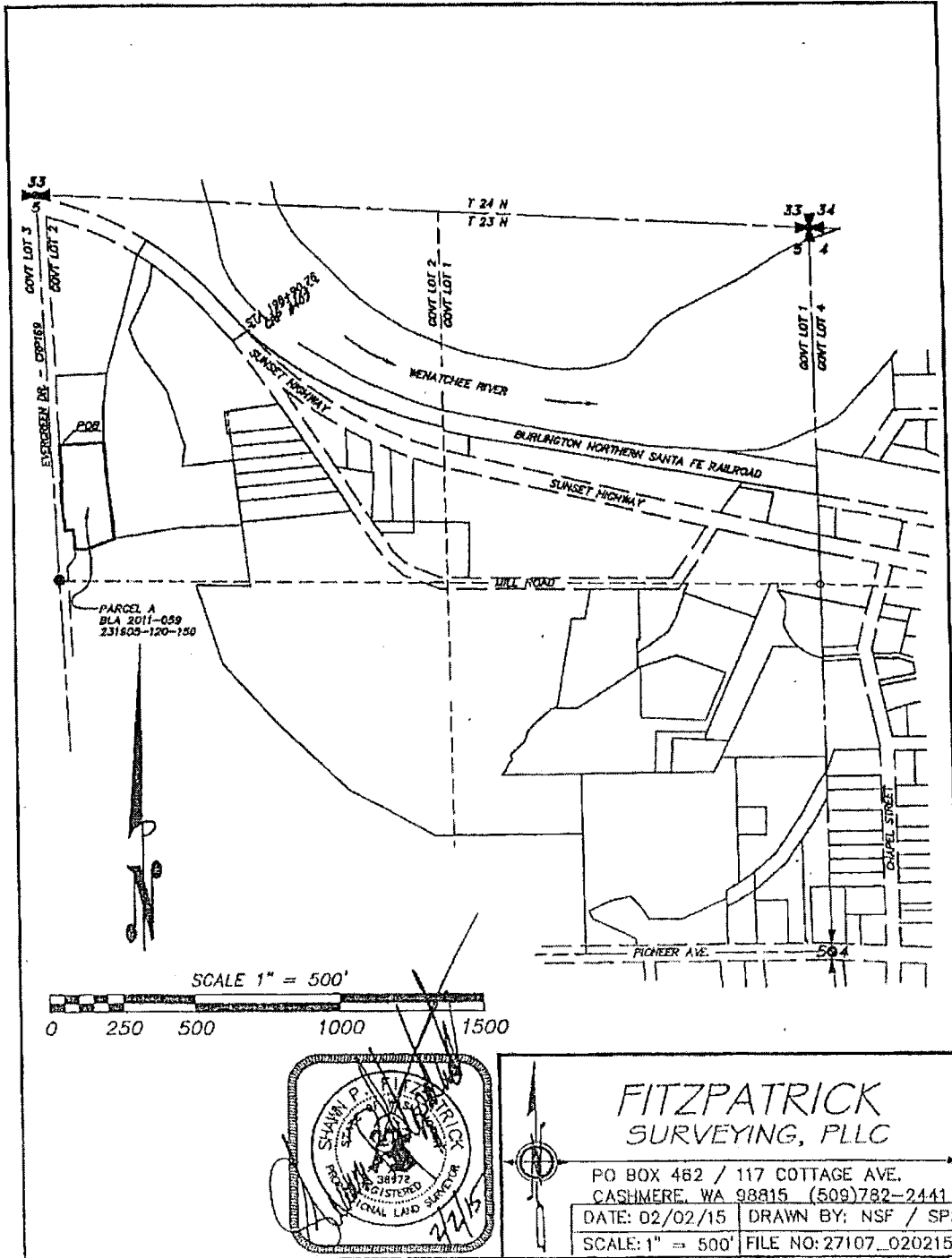
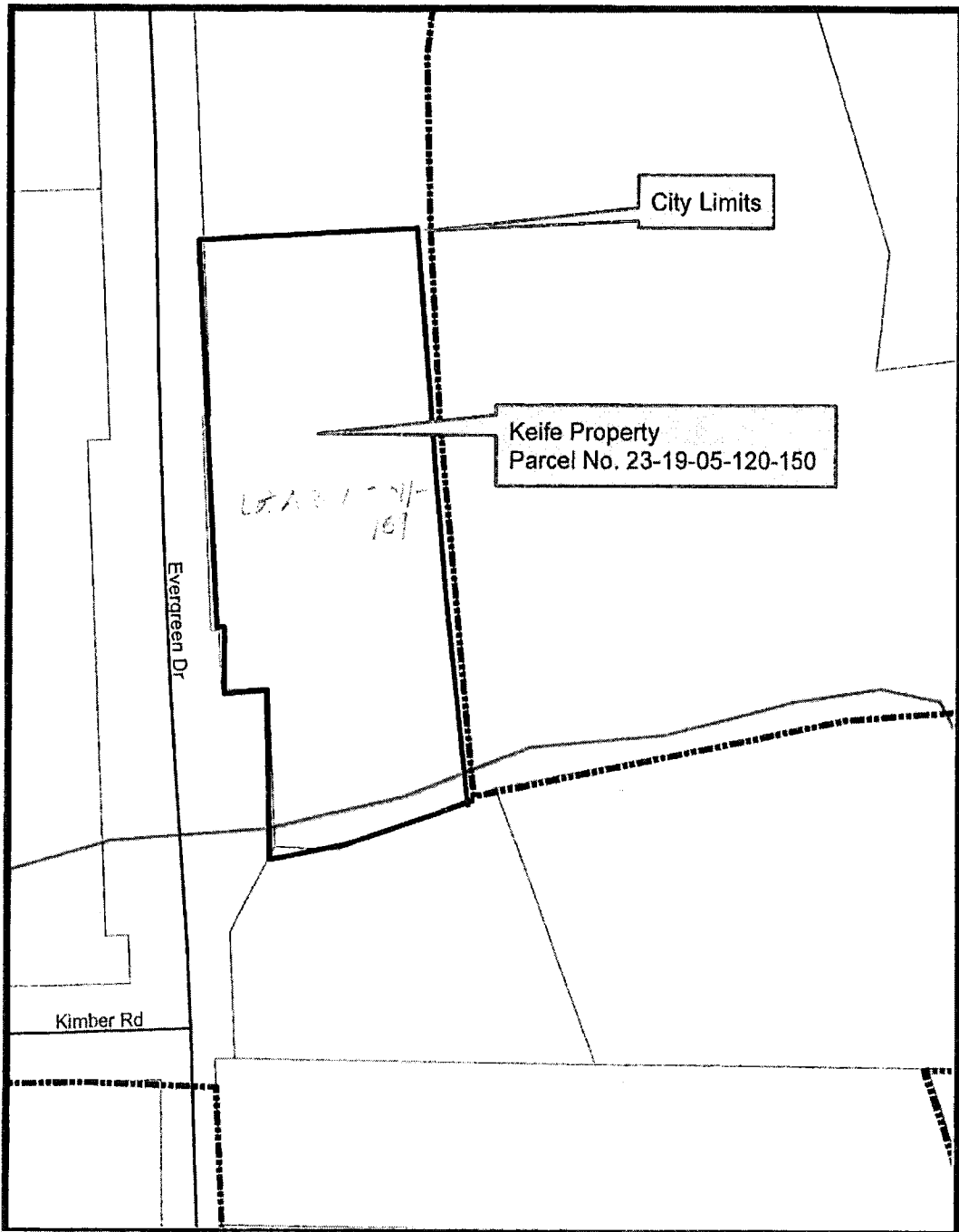


Exhibit "B"





City of Cashmere

101 Woodring Street
Cashmere, WA 98815
Ph (509) 782-3513 Fax (509) 782-2840
Website www.cityofcashmere.org

NOTICE OF PUBLIC HEARING ON KEIFE ANNEXATION

Pursuant to RCW 35.13, the Cashmere City Council will hold a public hearing on Monday, January 12, 2015 at 6:00 p.m. at the Cashmere City Hall, 101 Woodring Street on the following petition proposal for annexation into the incorporated City Limits of Cashmere:

The proposed annexation is located at 5755 Evergreen Drive, Cashmere, WA. 98815 also identified by Chelan County Assessor's Parcel Number 23-19-05-120-150. The property owners are Stephen & Cheri Keife.

Complete legal description and site survey of the proposed annexation and petition are available at Cashmere City Hall for viewing by request.

The public is invited to attend and make comment or send written comments c/o Mark Botello, Director of Planning & Building, City of Cashmere, 101 Woodring Street, Cashmere, WA 98815.

