

Hunter, Kathy (UTC)

From: Hunter, Kathy (UTC)
Sent: Friday, January 16, 2015 10:42 AM
To: 'Vanessa Herzog'
Subject: RE: Revised Crossing Exhibit - Centralia

Vanessa – Yes, this works. I will supplement the petition with this updated crossing lay-out.

Now that I have the updated crossing lay-out, I anticipate that the petition will be considered by the Commissioners on the February 12, 2015, Open Meeting. If approved, an order will be issued that day.

Kathy Hunter, Deputy Assistant Director, Transportation Safety
Washington Utilities and Transportation Commission
1300 S. Evergreen Park Dr. SW
PO Box 47250
Olympia, WA 98504-7250

Office Telephone: (360) 664-1257
Cell: (360) 701-1612
Fax: (360) 586-1150

From: Vanessa Herzog [mailto:vherzog@kiddermathews.com]
Sent: Wednesday, January 14, 2015 11:43 AM
To: Hunter, Kathy (UTC)
Cc: joea@benaroya.com
Subject: FW: Revised Crossing Exhibit - Centralia

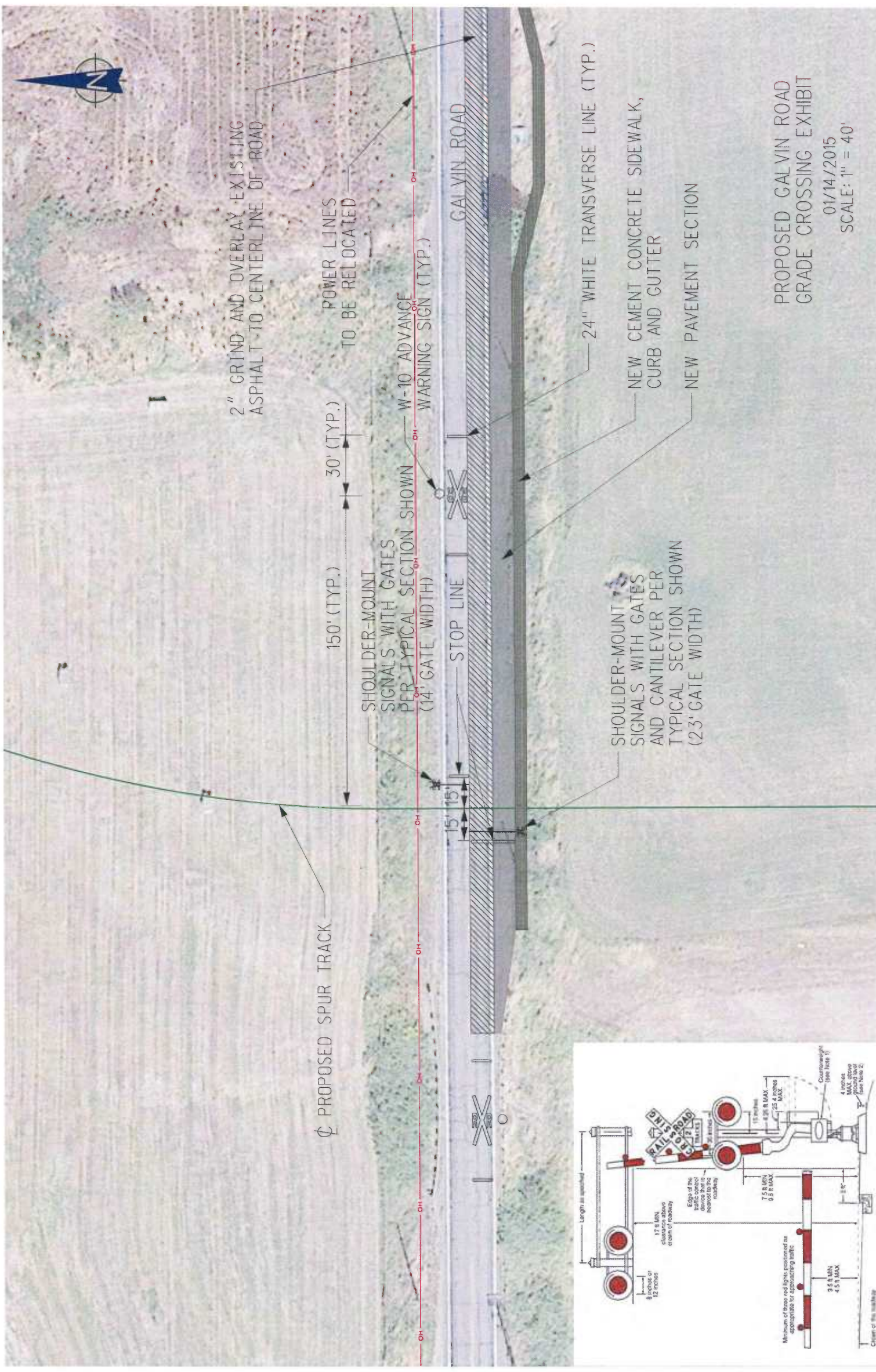
Kathy, I think this gives you what you were asking for. Call with any questions, changes, concerns, etc.

Can you give me a rough timeline for approval on this petition? Thank you very much.

Vanessa Herzog, SIOR, CCIM
Senior Vice President
Junior League of Tacoma, Community Council

KIDDER MATHEWS
1201 Pacific Avenue, Suite 1400, Tacoma, WA 98402
Tacoma 253.722.1400 | **Olympia** 360.705.2800
D 253.722.1453 | **F** 253.722.1409 | **C** 253.279.7831
vherzog@kiddermathews.com | kiddermathews.com

.....
Please consider the environment before printing this email.



2" GRIND AND OVERLAY EXISTING ASPHALT TO CENTERLINE OF ROAD

POWER LINES TO BE RELOCATED

W-10 ADVANCE WARNING SIGN (TYP.)

GALVIN ROAD

24" WHITE TRANSVERSE LINE (TYP.)

NEW CEMENT CONCRETE SIDEWALK, CURB AND GUTTER

NEW PAVEMENT SECTION

150' (TYP.)

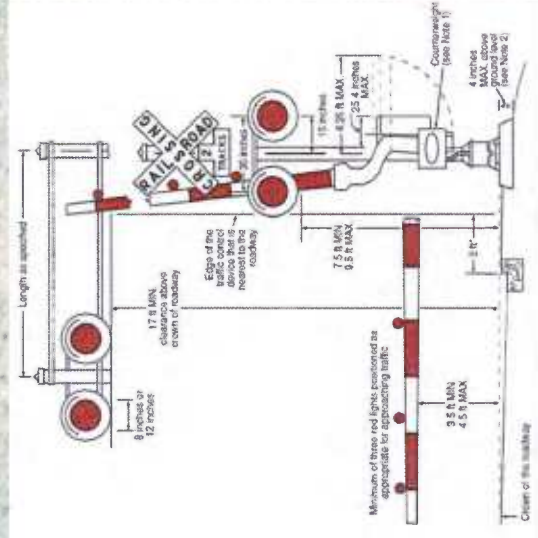
SHOULDER-MOUNT SIGNALS WITH GATES PER TYPICAL SECTION SHOWN (14' GATE WIDTH)

STOP LINE

SHOULDER-MOUNT SIGNALS WITH GATES AND CANTILEVER PER TYPICAL SECTION SHOWN (23' GATE WIDTH)

Φ PROPOSED SPUR TRACK

30' (TYP.)



PROPOSED GALVIN ROAD GRADE CROSSING EXHIBIT

01/14/2015

SCALE: 1" = 40'