

WN U-7

First Revision of Sheet No. 504

Canceling Original Sheet No. 504

INLAND TELEPHONE COMPANY

SCHEDULE NO. 200

SERVICE AREA MAPS (Continued)

MAP OF ROSLYN EXCHANGE AREA

[Attached]

(C)

Issued: May 24, 2013

Effective: July 1, 2013

Issued by: Inland Telephone Company d.b.a. Inland Networks

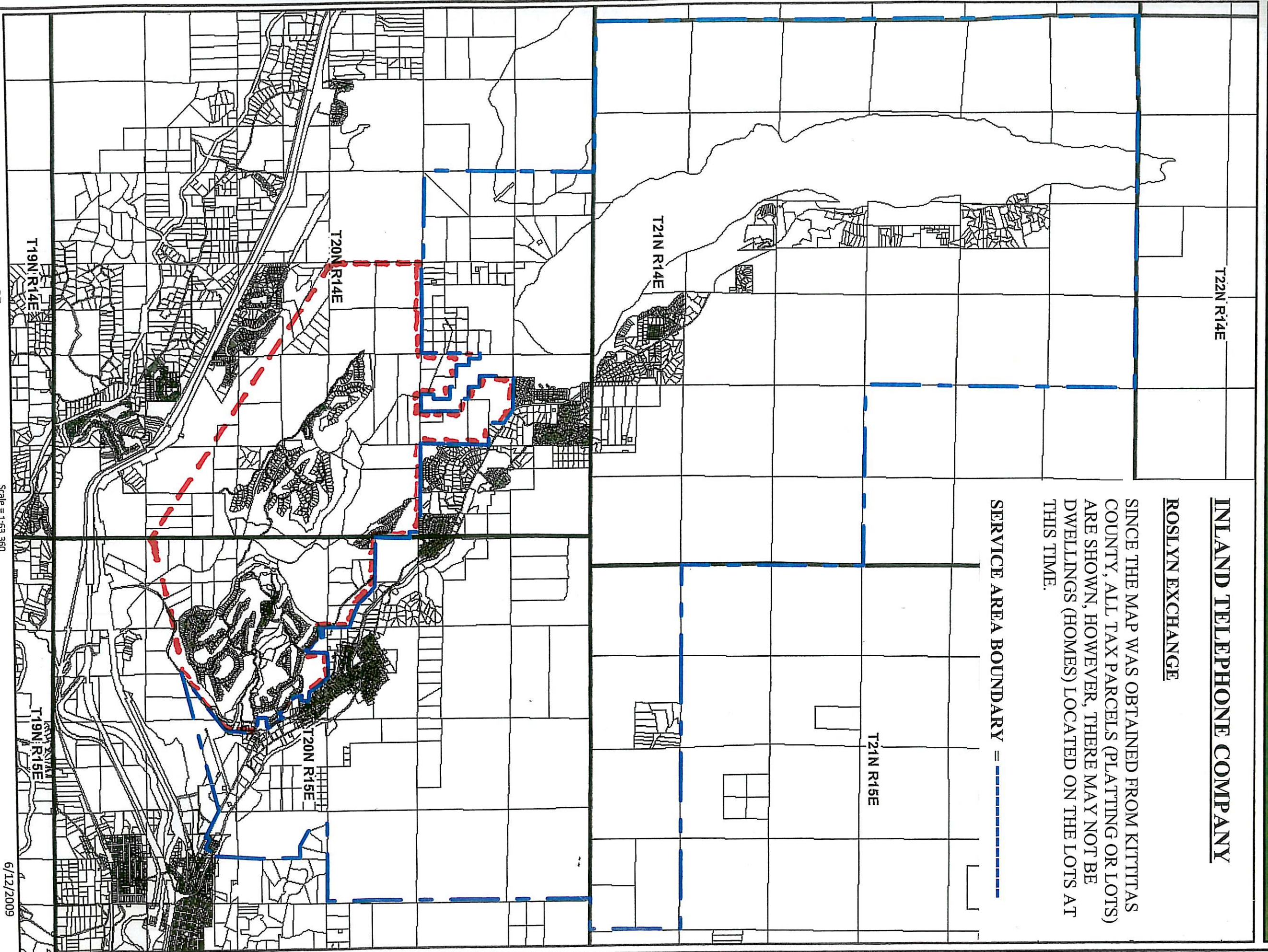
By: Doug Weis

Title: President

INLAND TELEPHONE COMPANY ROSLYN EXCHANGE

SINCE THE MAP WAS OBTAINED FROM KITTITAS COUNTY, ALL TAX PARCELS (PLATTING OR LOTS) ARE SHOWN, HOWEVER, THERE MAY NOT BE DWELLINGS (HOMES) LOCATED ON THE LOTS AT THIS TIME.

SERVICE AREA BOUNDARY = - - - - -



Map Center: Township: 21 Range: 14 Section: 35

Scale = 1:63,360
1 inch = 5,280 ft



6/12/2009

- Legend**
- Tax Parcels
 - Townships
 - Rights of Way
 - Sections



Disclaimer:
Kittitas County makes every effort to produce and publish the most current and accurate information possible. No warranties, expressed or implied, are provided for the data provided; its use, or its interpretation. Kittitas County does not guarantee the accuracy of the material contained herein and is not responsible for any misuse or representations by others regarding this information or its derivatives.

