

UT-122011-ST



100 CenturyLink Drive
Monroe, La. 71203
Tel: 318-388-9000

December 20, 2012

Mr. David W. Danner
Executive Director and Secretary
Washington Utilities & Transportation Commission
1300 S. Evergreen Park Dr. SW
Olympia, WA 98504

RECEIVED
WASHINGTON UTILITIES
2012 DEC 24 PM 12:07
617776 04 07
UNL/MS/12/12/12
00000000000000000000

Dear Mr. Danner:

As required by WAC 480-120-385, please find enclosed one original and two copies of the redacted version of the 3rd quarter 2012 results of operations and access line counts for United Telephone Company of the Northwest, Washington operations only.

If you have any questions concerning this submission, please contact Ken Buchan at (318) 362-1538.

Sincerely,

A handwritten signature in cursive script that reads "Lisa F. Grantham".

Lisa F. Grantham, Director
Separations/Regulatory Finance

Enclosures

cc: Ken Buchan

COMPANY PROPRIETARY

United Telephone Company of the Northwest
Current Month Rate of Return - Washington
July 2012

REDACTED

[BEGIN CONFIDENTIAL]

	CURRENT MONTH	OPEBS	ADJUSTMENTS	TRUE LEVEL	INTERSTATE OPERATIONS	INTRASTATE OPERATIONS
OPERATING REVENUE:						
UNIVERSAL SERVICE FUND						
LOCAL SERVICE						
NETWORK ACCESS SERVICE						
LONG DISTANCE NETWORK SERVICE						
MISCELLANEOUS						
UNCOLLECTIBLES (DR)						
TOTAL REVENUE						
OPERATING EXPENSES:						
PLANT SPECIFIC						
DEPRECIATION & AMORTIZATION						
OTHER PLANT NON-SPECIFIC						
CUSTOMER OPERATIONS						
CORPORATE OPERATIONS						
TOTAL OPERATING EXPENSE						
OPERATING TAXES:						
FEDERAL TAXES						
STATE TAXES						
OTHER TAXES						
TOTAL OPERATING TAXES						
OTHER OPERATING INC AND EXPENSE						
NET OPERATING INCOME						
NET INCOME EFFECT OF JURIS- DICTIONAL DIFFERENCES						
ADJUSTED NET OPERATING INCOME						
ASSUMED RATE BASE:						
TELEPHONE PLANT IN SERVICE						
PROPERTY HELD FUTURE USE						
PREPAID PENSIONS						
LESS:						
DEPRECIATION RESERVE						
AMORTIZATION RESERVE						
DEFERRED FEDERAL INCOME TAX						
Subtract:						
OPEBS Liability						
COMMISSION RATE BASE						

COMMISSION RATE OF RETURN
* CURRENT MONTH AMOUNTS ARE BASED ON END OF PERIOD BALANCES.
YEAR-TO-DATE RATE BASE IS BASED ON END OF PERIOD BALANCES.

** ADJUSTMENT TO MISCELLANEOUS REVENUE REFLECTS THE AMORTIZATION OF THE WASHINGTON PORTION OF THE GAIN RESULTING FROM UNITED'S PRIOR PARENT COMPANY SALE OF ITS DIRECTORY OPERATIONS AS SPECIFIED IN THE SETTLEMENT AGREEMENT IN DOCKET UT-051291. THE COMMISSION APPROVED THIS RATEMAKING TREATMENT IN ACCOUNTING ORDER 01, DOCKET UT-060861.



COMPANY PROPRIETARY

REDACTED

United Telephone - Northwest
12 MONTH Rate of Return - Washington
July 2012

YR TO DATE THIS MONTH	OPEBS	ADJUSTMENTS	TRUE LEVEL	INTERSTATE OPERATIONS	INTRASTATE OPERATIONS
--------------------------	-------	-------------	------------	--------------------------	--------------------------

OPERATING REVENUE:
USF & LIFELINE ADJUSTMENTS
LOCAL SERVICE
NETWORK ACCESS SERVICE
LONG DISTANCE NETWORK SERVICE
MISCELLANEOUS
UNCOLLECTIBLES (DR)
TOTAL REVENUE

OPERATING EXPENSES:
PLANT SPECIFIC
DEPRECIATION & AMORTIZATION
OTHER PLANT NON-SPECIFIC
CUSTOMER OPERATIONS
CORPORATE OPERATIONS
TOTAL OPERATING EXPENSE

OPERATING TAXES:
FEDERAL TAXES
STATE TAXES
OTHER TAXES
TOTAL OPERATING TAXES

OTHER OPERATING INC AND EXPENSE

NET OPERATING INCOME

NET INCOME EFFECT OF JURIS-
DICTIONAL DIFFERENCES

ADJUSTED NET OPERATING INCOME

ASSUMED RATE BASE:
TELEPHONE PLANT IN SERVICE
PROPERTY HELD FUTURE USE
PREPAID PENSIONS
LESS:
DEPRECIATION RESERVE
AMORTIZATION RESERVE
DEFERRED FEDERAL INCOME TAX

Subtract:
OPEBS Liability
COMMISSION RATE BASE

COMMISSION RATE OF RETURN
* CURRENT MONTH AMOUNTS ARE BASED ON END OF PERIOD BALANCES.
YEAR-TO-DATE RATE BASE IS BASED ON END OF PERIOD BALANCES.

** ADJUSTMENT TO MISCELLANEOUS REVENUE REFLECTS THE AMORTIZATION OF THE WASHINGTON PORTION OF THE GAIN RESULTING FROM UNITED'S PRIOR PARENT COMPANY SALE OF ITS DIRECTORY OPERATIONS AS SPECIFIED IN THE SETTLEMENT AGREEMENT IN DOCKET UT-051291. THE COMMISSION APPROVED THIS RATEMAKING TREATMENT IN ACCOUNTING ORDER 01, DOCKET UT-060861.

COMPANY PROPRIETARY

United Telephone Company of the Northwest
Current Month Rate of Return - Washington
August 2012

REDACTED

	CURRENT MONTH	OPEBS	ADJUSTMENTS	TRUE LEVEL	INTERSTATE OPERATIONS	INTRASTATE OPERATIONS
OPERATING REVENUE:						
UNIVERSAL SERVICE FUND						
LOCAL SERVICE						
NETWORK ACCESS SERVICE						
LONG DISTANCE NETWORK SERVICE						
MISCELLANEOUS						
UNCOLLECTIBLES (DR)						
TOTAL REVENUE						
OPERATING EXPENSES:						
PLANT SPECIFIC						
DEPRECIATION & AMORTIZATION						
OTHER PLANT NON-SPECIFIC						
CUSTOMER OPERATIONS						
CORPORATE OPERATIONS						
TOTAL OPERATING EXPENSE						
OPERATING TAXES:						
FEDERAL TAXES						
STATE TAXES						
OTHER TAXES						
TOTAL OPERATING TAXES						
OTHER OPERATING INC AND EXPENSE						
NET OPERATING INCOME						
NET INCOME EFFECT OF JURIS- DICTIONAL DIFFERENCES						
ADJUSTED NET OPERATING INCOME						
ASSUMED RATE BASE:						
TELEPHONE PLANT IN SERVICE						
PROPERTY HELD FUTURE USE						
PREPAID PENSIONS						
LESS:						
DEPRECIATION RESERVE						
AMORTIZATION RESERVE						
DEFERRED FEDERAL INCOME TAX						
Subtract:						
OPEBS Liability						
COMMISSION RATE BASE						

COMMISSION RATE OF RETURN
* CURRENT MONTH AMOUNTS ARE BASED ON END OF PERIOD BALANCES.
YEAR-TO-DATE RATE BASE IS BASED ON END OF PERIOD BALANCES.

** ADJUSTMENT TO MISCELLANEOUS REVENUE REFLECTS THE AMORTIZATION OF THE WASHINGTON PORTION OF THE GAIN RESULTING FROM UNITED'S PRIOR PARENT COMPANY SALE OF ITS DIRECTORY OPERATIONS AS SPECIFIED IN THE SETTLEMENT AGREEMENT IN DOCKET UT-051291. THE COMMISSION APPROVED THIS RATEMAKING TREATMENT IN ACCOUNTING ORDER 01, DOCKET UT-060861.

COMPANY PROPRIETARY

REDACTED

United Telephone - Northwest
12 MONTH Rate of Return - Washington
August 2012

	YR TO DATE THIS MONTH	OPEBS	ADJUSTMENTS	TRUE LEVEL	INTERSTATE OPERATIONS	INTRASTATE OPERATIONS
OPERATING REVENUE:						
USF & LIFELINE ADJUSTMENTS						
LOCAL SERVICE						
NETWORK ACCESS SERVICE						
LONG DISTANCE NETWORK SERVICE						
MISCELLANEOUS						
UNCOLLECTIBLES (DR)						
TOTAL REVENUE						
OPERATING EXPENSES:						
PLANT SPECIFIC						
DEPRECIATION & AMORTIZATION						
OTHER PLANT NON-SPECIFIC						
CUSTOMER OPERATIONS						
CORPORATE OPERATIONS						
TOTAL OPERATING EXPENSE						
OPERATING TAXES:						
FEDERAL TAXES						
STATE TAXES						
OTHER TAXES						
TOTAL OPERATING TAXES						
OTHER OPERATING INC AND EXPENSE						
NET OPERATING INCOME						
NET INCOME EFFECT OF JURIS- DICTIONAL DIFFERENCES						
ADJUSTED NET OPERATING INCOME						
ASSUMED RATE BASE:						
TELEPHONE PLANT IN SERVICE						
PROPERTY HELD FUTURE USE						
PREPAID PENSIONS						
LESS:						
DEPRECIATION RESERVE						
AMORTIZATION RESERVE						
DEFERRED FEDERAL INCOME TAX						
Subtract:						
OPEBS Liability						
COMMISSION RATE BASE						

COMMISSION RATE OF RETURN

* CURRENT MONTH AMOUNTS ARE BASED ON END OF PERIOD BALANCES.
YEAR-TO-DATE RATE BASE IS BASED ON END OF PERIOD BALANCES.

** ADJUSTMENT TO MISCELLANEOUS REVENUE REFLECTS THE AMORTIZATION OF THE WASHINGTON PORTION OF THE GAIN RESULTING FROM UNITED'S PRIOR PARENT COMPANY SALE OF ITS DIRECTORY OPERATIONS AS SPECIFIED IN THE SETTLEMENT AGREEMENT IN DOCKET UT-051291. THE COMMISSION APPROVED THIS RATEMAKING TREATMENT IN ACCOUNTING ORDER 01, DOCKET UT-060881.

COMPANY PROPRIETARY

United Telephone Company of the Northwest
Current Month Rate of Return - Washington
September 2012

REDACTED

	CURRENT MONTH	OPEBS	ADJUSTMENTS	TRUE LEVEL	INTERSTATE OPERATIONS	INTRASTATE OPERATIONS
OPERATING REVENUE:						
UNIVERSAL SERVICE FUND						
LOCAL SERVICE						
NETWORK ACCESS SERVICE						
LONG DISTANCE NETWORK SERVICE						
MISCELLANEOUS						
UNCOLLECTIBLES (DR)						
TOTAL REVENUE						
OPERATING EXPENSES:						
PLANT SPECIFIC						
DEPRECIATION & AMORTIZATION						
OTHER PLANT NON-SPECIFIC						
CUSTOMER OPERATIONS						
CORPORATE OPERATIONS						
TOTAL OPERATING EXPENSE						
OPERATING TAXES:						
FEDERAL TAXES						
STATE TAXES						
OTHER TAXES						
TOTAL OPERATING TAXES						
OTHER OPERATING INC AND EXPENSE						
NET OPERATING INCOME						
NET INCOME EFFECT OF JURIS- DICTIONAL DIFFERENCES						
ADJUSTED NET OPERATING INCOME						
ASSUMED RATE BASE:						
TELEPHONE PLANT IN SERVICE						
PROPERTY HELD FUTURE USE						
PREPAID PENSIONS						
LESS:						
DEPRECIATION RESERVE						
AMORTIZATION RESERVE						
DEFERRED FEDERAL INCOME TAX						
Subtract:						
OPEBS Liability						
COMMISSION RATE BASE						

COMMISSION RATE OF RETURN
* CURRENT MONTH AMOUNTS ARE BASED ON END OF PERIOD BALANCES.
YEAR-TO-DATE RATE BASE IS BASED ON END OF PERIOD BALANCES.

** ADJUSTMENT TO MISCELLANEOUS REVENUE REFLECTS THE AMORTIZATION OF THE WASHINGTON PORTION OF THE GAIN RESULTING FROM UNITED'S PRIOR PARENT COMPANY SALE OF ITS DIRECTORY OPERATIONS AS SPECIFIED IN THE SETTLEMENT AGREEMENT IN DOCKET UT-051291. THE COMMISSION APPROVED THIS RATEMAKING TREATMENT IN ACCOUNTING ORDER 01, DOCKET UT-060861.



COMPANY PROPRIETARY

REDACTED

United Telephone - Northwest
12 MONTH Rate of Return - Washington
September 2012

	YR TO DATE THIS MONTH	OPEBS	ADJUSTMENTS	TRUE LEVEL	INTERSTATE OPERATIONS	INTRASTATE OPERATIONS
OPERATING REVENUE:						
USF & LIFELINE ADJUSTMENTS						
LOCAL SERVICE						
NETWORK ACCESS SERVICE						
LONG DISTANCE NETWORK SERVICE						
MISCELLANEOUS						
UNCOLLECTIBLES (DR)						
TOTAL REVENUE						
OPERATING EXPENSES:						
PLANT SPECIFIC						
DEPRECIATION & AMORTIZATION						
OTHER PLANT NON-SPECIFIC						
CUSTOMER OPERATIONS						
CORPORATE OPERATIONS						
TOTAL OPERATING EXPENSE						
OPERATING TAXES:						
FEDERAL TAXES						
STATE TAXES						
OTHER TAXES						
TOTAL OPERATING TAXES						
OTHER OPERATING INC AND EXPENSE						
NET OPERATING INCOME						
NET INCOME EFFECT OF JURIS- DICTIONAL DIFFERENCES						
ADJUSTED NET OPERATING INCOME						
ASSUMED RATE BASE:						
TELEPHONE PLANT IN SERVICE						
PROPERTY HELD FUTURE USE						
PREPAID PENSIONS						
LESS:						
DEPRECIATION RESERVE						
AMORTIZATION RESERVE						
DEFERRED FEDERAL INCOME TAX						
Subtract:						
OPEBS Liability						
COMMISSION RATE BASE						

COMMISSION RATE OF RETURN

* CURRENT MONTH AMOUNTS ARE BASED ON END OF PERIOD BALANCES.
YEAR-TO-DATE RATE BASE IS BASED ON END OF PERIOD BALANCES.

** ADJUSTMENT TO MISCELLANEOUS REVENUE REFLECTS THE AMORTIZATION OF THE WASHINGTON PORTION OF THE GAIN RESULTING FROM UNITED'S PRIOR PARENT COMPANY SALE OF ITS DIRECTORY OPERATIONS AS SPECIFIED IN THE SETTLEMENT AGREEMENT IN DOCKET UT-051291. THE COMMISSION APPROVED THIS RATEMAKING TREATMENT IN ACCOUNTING ORDER 01, DOCKET UT-060861.

United Telephone - Northwest
Washington Access Line Information by Service
As of 07/31/2012
Confidential per WAC 480-07-160

REDACTED

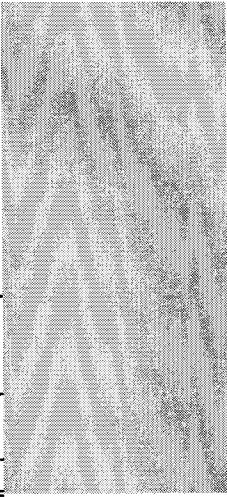
One Party Single Line Business
One Party Multi-line Business
Public Paystation
Key Business Trunks
PBX Business Trunks
ISDN BRI Business
ISDN PRI Business
Centrex
Foreign Exchange

TOTAL BUSINESS

One Party Residence

TOTAL RESIDENCE

TOTAL LINES



United Telephone - Northwest
 Washington Access Line Information by Exchange
 As of 07/31/2012

Confidential per WAC 480-07-160

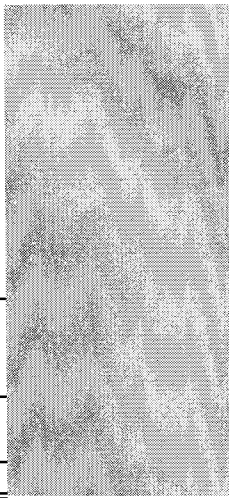
REDACTED

EXCHANGE	NPA	NXX	ACCESS LINES
BICKLETON	509	896	
BRINNON	360	796	
CHIMACUM	360	732	
COLUMBIA	509	377	
DALLESPORT	509	767	
GARDINER	360	797	
GLENWOOD	509	364	
GOLDENDALE	509	773	
GRANDVIEW	509	882	
GRANGER	509	854	
HARRAH	509	848	
KLICKITAT	509	369	
LYLE	509	365	
MABTON	509	894	
MATTAWA	509	932	
PATERSON	509	875	
POULSBO	360	315	
POULSBO	360	394	
POULSBO	360	396	
POULSBO	360	598	
POULSBO	360	697	
POULSBO	360	779	
PROSSER	509	786	
PROSSER	509	788	
QUILCENE	360	765	
ROOSEVELT	509	384	
STEVENSON	509	427	
SUNNYSIDE	509	836	
SUNNYSIDE	509	837	
SUNNYSIDE	509	839	
TOPPENISH	509	865	
TROUT LAKE	509	395	
WAPATO	509	877	
WHITE SALMON	509	493	
WHITE SWAN	509	874	
WHITSTRAN	509	973	
WILLARD	509	538	
WISHRAM	509	748	
ZILLAH	509	829	
TOTAL ACCESS LINES BY EXCHANGE			

United Telephone - Northwest
Washington Access Line Information by Service
As of 08/31/2012
Confidential per WAC 480-07-160

REDACTED

One Party Single Line Business
One Party Multi-line Business
Public Paystation
Key Business Trunks
PBX Business Trunks
ISDN BRI Business
ISDN PRI Business
Centrex
Foreign Exchange
<hr/> TOTAL BUSINESS
One Party Residence
<hr/> TOTAL RESIDENCE
<hr/> TOTAL LINES <hr/>



United Telephone - Northwest
 Washington Access Line Information by Exchange
 As of 08/31/2012
 Confidential per WAC 480-07-160

REDACTED

EXCHANGE	NPA	NXX	ACCESS LINES
BICKLETON	509	896	
BRINNON	360	796	
CHIMACUM	360	732	
COLUMBIA	509	377	
DALLESPORT	509	767	
GARDINER	360	797	
GLENWOOD	509	364	
GOLDENDALE	509	773	
GRANDVIEW	509	882	
GRANGER	509	854	
HARRAH	509	848	
KLICKITAT	509	369	
LYLE	509	365	
MABTON	509	894	
MATTAWA	509	932	
PATERSON	509	875	
POULSBO	360	315	
POULSBO	360	394	
POULSBO	360	396	
POULSBO	360	598	
POULSBO	360	697	
POULSBO	360	779	
PROSSER	509	786	
PROSSER	509	788	
QUILCENE	360	765	
ROOSEVELT	509	384	
STEVENSON	509	427	
SUNNYSIDE	509	836	
SUNNYSIDE	509	837	
SUNNYSIDE	509	839	
TOPPENISH	509	865	
TROUT LAKE	509	395	
WAPATO	509	877	
WHITE SALMON	509	493	
WHITE SWAN	509	874	
WHITSTRAN	509	973	
WILLARD	509	538	
WISHRAM	509	748	
ZILLAH	509	829	
TOTAL ACCESS LINES BY EXCHANGE			

United Telephone - Northwest
Washington Access Line Information by Service
As of 09/30/2012
Confidential per WAC 480-07-160

REDACTED

One Party Single Line Business	
One Party Multi-line Business	
Public Paystation	
Key Business Trunks	
PBX Business Trunks	
ISDN BRI Business	
ISDN PRI Business	
Centrex	
Foreign Exchange	
<hr/> TOTAL BUSINESS	
One Party Residence	
<hr/> TOTAL RESIDENCE	
<hr/> TOTAL LINES <hr/>	

United Telephone - Northwest
 Washington Access Line Information by Exchange
 As of 09/30/2012
 Confidential per WAC 480-07-160

REDACTED

EXCHANGE	NPA	NXX	ACCESS LINES
BICKLETON	509	896	
BRINNON	360	796	
CHIMACUM	360	732	
COLUMBIA	509	377	
DALLESFORT	509	767	
GARDINER	360	797	
GLENWOOD	509	364	
GOLDENDALE	509	773	
GRANDVIEW	509	882	
GRANGER	509	854	
HARRAH	509	848	
KLICKITAT	509	369	
LYLE	509	365	
MABTON	509	894	
MATTAWA	509	932	
PATERSON	509	875	
POULSBO	360	315	
POULSBO	360	394	
POULSBO	360	396	
POULSBO	360	598	
POULSBO	360	697	
POULSBO	360	779	
PROSSER	509	786	
PROSSER	509	788	
QUILCENE	360	765	
ROOSEVELT	509	384	
STEVENSON	509	427	
SUNNYSIDE	509	836	
SUNNYSIDE	509	837	
SUNNYSIDE	509	839	
TOPPENISH	509	865	
TROUT LAKE	509	395	
WAPATO	509	877	
WHITE SALMON	509	493	
WHITE SWAN	509	874	
WHITSTRAN	509	973	
WILLARD	509	538	
WISHRAM	509	748	
ZILLAH	509	829	
TOTAL ACCESS LINES BY EXCHANGE			

COPY

COMPANY PROPRIETARY

United Telephone Company of the Northwest
Current Month Rate of Return - Washington
July 2012

REDACTED

[BEGIN CONFIDENTIAL]

	CURRENT MONTH	OPEBS	ADJUSTMENTS	TRUE LEVEL	INTERSTATE OPERATIONS	INTRASTATE OPERATIONS
OPERATING REVENUE:						
UNIVERSAL SERVICE FUND						
LOCAL SERVICE						
NETWORK ACCESS SERVICE						
LONG DISTANCE NETWORK SERVICE						
MISCELLANEOUS						
UNCOLLECTIBLES (DR)						
TOTAL REVENUE						
OPERATING EXPENSES:						
PLANT SPECIFIC						
DEPRECIATION & AMORTIZATION						
OTHER PLANT NON-SPECIFIC						
CUSTOMER OPERATIONS						
CORPORATE OPERATIONS						
TOTAL OPERATING EXPENSE						
OPERATING TAXES:						
FEDERAL TAXES						
STATE TAXES						
OTHER TAXES						
TOTAL OPERATING TAXES						
OTHER OPERATING INC AND EXPENSE						
NET OPERATING INCOME						
NET INCOME EFFECT OF JURIS- DICTIONAL DIFFERENCES						
ADJUSTED NET OPERATING INCOME						
ASSUMED RATE BASE:						
TELEPHONE PLANT IN SERVICE						
PROPERTY HELD FUTURE USE						
PREPAID PENSIONS						
LESS:						
DEPRECIATION RESERVE						
AMORTIZATION RESERVE						
DEFERRED FEDERAL INCOME TAX						
Subtract:						
OPEBS Liability						
COMMISSION RATE BASE						

COMMISSION RATE OF RETURN

* CURRENT MONTH AMOUNTS ARE BASED ON END OF PERIOD BALANCES.
YEAR-TO-DATE RATE BASE IS BASED ON END OF PERIOD BALANCES.

** ADJUSTMENT TO MISCELLANEOUS REVENUE REFLECTS THE AMORTIZATION OF THE WASHINGTON PORTION OF THE GAIN RESULTING FROM UNITED'S PRIOR PARENT COMPANY SALE OF ITS DIRECTORY OPERATIONS AS SPECIFIED IN THE SETTLEMENT AGREEMENT IN DOCKET UT-051291. THE COMMISSION APPROVED THIS RATEMAKING TREATMENT IN ACCOUNTING ORDER 01, DOCKET UT-060861.



COMPANY PROPRIETARY

REDACTED

United Telephone - Northwest
12 MONTH Rate of Return - Washington
July 2012

	YR TO DATE THIS MONTH	OPEBS	ADJUSTMENTS	TRUE LEVEL	INTERSTATE OPERATIONS	INTRASTATE OPERATIONS
OPERATING REVENUE:						
USF & LIFELINE ADJUSTMENTS						
LOCAL SERVICE						
NETWORK ACCESS SERVICE						
LONG DISTANCE NETWORK SERVICE						
MISCELLANEOUS						
UNCOLLECTIBLES (DR)						
TOTAL REVENUE						
OPERATING EXPENSES:						
PLANT SPECIFIC						
DEPRECIATION & AMORTIZATION						
OTHER PLANT NON-SPECIFIC						
CUSTOMER OPERATIONS						
CORPORATE OPERATIONS						
TOTAL OPERATING EXPENSE						
OPERATING TAXES:						
FEDERAL TAXES						
STATE TAXES						
OTHER TAXES						
TOTAL OPERATING TAXES						
OTHER OPERATING INC AND EXPENSE						
NET OPERATING INCOME						
NET INCOME EFFECT OF JURIS- DICTIONAL DIFFERENCES						
ADJUSTED NET OPERATING INCOME						
ASSUMED RATE BASE:						
TELEPHONE PLANT IN SERVICE						
PROPERTY HELD FUTURE USE						
PREPAID PENSIONS						
LESS:						
DEPRECIATION RESERVE						
AMORTIZATION RESERVE						
DEFERRED FEDERAL INCOME TAX						
Subtract:						
OPEBS Liability						
COMMISSION RATE BASE						

COMMISSION RATE OF RETURN
* CURRENT MONTH AMOUNTS ARE BASED ON END OF PERIOD BALANCES.
YEAR-TO-DATE RATE BASE IS BASED ON END OF PERIOD BALANCES.

** ADJUSTMENT TO MISCELLANEOUS REVENUE REFLECTS THE AMORTIZATION OF THE WASHINGTON PORTION OF THE GAIN RESULTING FROM UNITED'S PRIOR PARENT COMPANY SALE OF ITS DIRECTORY OPERATIONS AS SPECIFIED IN THE SETTLEMENT AGREEMENT IN DOCKET UT-051291. THE COMMISSION APPROVED THIS RATEMAKING TREATMENT IN ACCOUNTING ORDER 01, DOCKET UT-060861.

COMPANY PROPRIETARY

United Telephone Company of the Northwest
Current Month Rate of Return - Washington
August 2012

REDACTED

	CURRENT MONTH	OPEBS	ADJUSTMENTS	TRUE LEVEL	INTERSTATE OPERATIONS	INTRASTATE OPERATIONS
OPERATING REVENUE:						
UNIVERSAL SERVICE FUND						
LOCAL SERVICE						
NETWORK ACCESS SERVICE						
LONG DISTANCE NETWORK SERVICE						
MISCELLANEOUS						
UNCOLLECTIBLES (DR)						
TOTAL REVENUE						
OPERATING EXPENSES:						
PLANT SPECIFIC						
DEPRECIATION & AMORTIZATION						
OTHER PLANT NON-SPECIFIC						
CUSTOMER OPERATIONS						
CORPORATE OPERATIONS						
TOTAL OPERATING EXPENSE						
OPERATING TAXES:						
FEDERAL TAXES						
STATE TAXES						
OTHER TAXES						
TOTAL OPERATING TAXES						
OTHER OPERATING INC AND EXPENSE						
NET OPERATING INCOME						
NET INCOME EFFECT OF JURIS- DICTIONAL DIFFERENCES						
ADJUSTED NET OPERATING INCOME						
ASSUMED RATE BASE:						
TELEPHONE PLANT IN SERVICE						
PROPERTY HELD FUTURE USE						
PREPAID PENSIONS						
LESS:						
DEPRECIATION RESERVE						
AMORTIZATION RESERVE						
DEFERRED FEDERAL INCOME TAX						
Subtract:						
OPEBS Liability						
COMMISSION RATE BASE						

COMMISSION RATE OF RETURN

* CURRENT MONTH AMOUNTS ARE BASED ON END OF PERIOD BALANCES.
YEAR-TO-DATE RATE BASE IS BASED ON END OF PERIOD BALANCES.

** ADJUSTMENT TO MISCELLANEOUS REVENUE REFLECTS THE AMORTIZATION OF THE WASHINGTON PORTION OF THE GAIN RESULTING FROM UNITED'S PRIOR PARENT COMPANY SALE OF ITS DIRECTORY OPERATIONS AS SPECIFIED IN THE SETTLEMENT AGREEMENT IN DOCKET UT-051291. THE COMMISSION APPROVED THIS RATEMAKING TREATMENT IN ACCOUNTING ORDER 01, DOCKET UT-060861.



COMPANY PROPRIETARY

REDACTED

United Telephone - Northwest
12 MONTH Rate of Return - Washington
August 2012

	YR TO DATE THIS MONTH	OPEBS	ADJUSTMENTS	TRUE LEVEL	INTERSTATE OPERATIONS	INTRASTATE OPERATIONS
OPERATING REVENUE:						
USF & LIFELINE ADJUSTMENTS						
LOCAL SERVICE						
NETWORK ACCESS SERVICE						
LONG DISTANCE NETWORK SERVICE						
MISCELLANEOUS						
UNCOLLECTIBLES (DR)						
TOTAL REVENUE						
OPERATING EXPENSES:						
PLANT SPECIFIC						
DEPRECIATION & AMORTIZATION						
OTHER PLANT NON-SPECIFIC						
CUSTOMER OPERATIONS						
CORPORATE OPERATIONS						
TOTAL OPERATING EXPENSE						
OPERATING TAXES:						
FEDERAL TAXES						
STATE TAXES						
OTHER TAXES						
TOTAL OPERATING TAXES						
OTHER OPERATING INC AND EXPENSE						
NET OPERATING INCOME						
NET INCOME EFFECT OF JURIS- DICTIONAL DIFFERENCES						
ADJUSTED NET OPERATING INCOME						
ASSUMED RATE BASE:						
TELEPHONE PLANT IN SERVICE						
PROPERTY HELD FUTURE USE						
PREPAID PENSIONS						
LESS:						
DEPRECIATION RESERVE						
AMORTIZATION RESERVE						
DEFERRED FEDERAL INCOME TAX						
Subtract:						
OPEBS Liability						
COMMISSION RATE BASE						

COMMISSION RATE OF RETURN
* CURRENT MONTH AMOUNTS ARE BASED ON END OF PERIOD BALANCES.
YEAR-TO-DATE RATE BASE IS BASED ON END OF PERIOD BALANCES.

** ADJUSTMENT TO MISCELLANEOUS REVENUE REFLECTS THE AMORTIZATION OF THE WASHINGTON PORTION OF THE GAIN RESULTING FROM UNITED'S PRIOR PARENT COMPANY SALE OF ITS DIRECTORY OPERATIONS AS SPECIFIED IN THE SETTLEMENT AGREEMENT IN DOCKET UT-051291. THE COMMISSION APPROVED THIS RATEMAKING TREATMENT IN ACCOUNTING ORDER 01, DOCKET UT-060861.

COMPANY PROPRIETARY

REDACTED

United Telephone Company of the Northwest
Current Month Rate of Return - Washington
September 2012

	CURRENT MONTH	OPEBS	ADJUSTMENTS	TRUE LEVEL	INTERSTATE OPERATIONS	INTRASTATE OPERATIONS
OPERATING REVENUE:						
UNIVERSAL SERVICE FUND						
LOCAL SERVICE						
NETWORK ACCESS SERVICE						
LONG DISTANCE NETWORK SERVICE						
MISCELLANEOUS						
UNCOLLECTIBLES (DR)						
TOTAL REVENUE						
OPERATING EXPENSES:						
PLANT SPECIFIC						
DEPRECIATION & AMORTIZATION						
OTHER PLANT NON-SPECIFIC						
CUSTOMER OPERATIONS						
CORPORATE OPERATIONS						
TOTAL OPERATING EXPENSE						
OPERATING TAXES:						
FEDERAL TAXES						
STATE TAXES						
OTHER TAXES						
TOTAL OPERATING TAXES						
OTHER OPERATING INC AND EXPENSE						
NET OPERATING INCOME						
NET INCOME EFFECT OF JURIS- DICTIONAL DIFFERENCES						
ADJUSTED NET OPERATING INCOME						
ASSUMED RATE BASE:						
TELEPHONE PLANT IN SERVICE						
PROPERTY HELD FUTURE USE						
PREPAID PENSIONS						
LESS:						
DEPRECIATION RESERVE						
AMORTIZATION RESERVE						
DEFERRED FEDERAL INCOME TAX						
Subtract:						
OPEBS Liability						
COMMISSION RATE BASE						

COMMISSION RATE OF RETURN
* CURRENT MONTH AMOUNTS ARE BASED ON END OF PERIOD BALANCES.
YEAR-TO-DATE RATE BASE IS BASED ON END OF PERIOD BALANCES.

** ADJUSTMENT TO MISCELLANEOUS REVENUE REFLECTS THE AMORTIZATION OF THE WASHINGTON PORTION OF THE GAIN RESULTING FROM UNITED'S PRIOR PARENT COMPANY SALE OF ITS DIRECTORY OPERATIONS AS SPECIFIED IN THE SETTLEMENT AGREEMENT IN DOCKET UT-051291. THE COMMISSION APPROVED THIS RATEMAKING TREATMENT IN ACCOUNTING ORDER 01, DOCKET UT-060861.



COMPANY PROPRIETARY

REDACTED

United Telephone - Northwest
12 MONTH Rate of Return - Washington
September 2012

	YR TO DATE THIS MONTH	OPEBS	ADJUSTMENTS	TRUE LEVEL	INTERSTATE OPERATIONS	INTRASTATE OPERATIONS
OPERATING REVENUE:						
USF & LIFELINE ADJUSTMENTS						
LOCAL SERVICE						
NETWORK ACCESS SERVICE						
LONG DISTANCE NETWORK SERVICE						
MISCELLANEOUS						
UNCOLLECTIBLES (DR)						
TOTAL REVENUE						
OPERATING EXPENSES:						
PLANT SPECIFIC						
DEPRECIATION & AMORTIZATION						
OTHER PLANT NON-SPECIFIC						
CUSTOMER OPERATIONS						
CORPORATE OPERATIONS						
TOTAL OPERATING EXPENSE						
OPERATING TAXES:						
FEDERAL TAXES						
STATE TAXES						
OTHER TAXES						
TOTAL OPERATING TAXES						
OTHER OPERATING INC AND EXPENSE						
NET OPERATING INCOME						
NET INCOME EFFECT OF JURIS- DICTIONAL DIFFERENCES						
ADJUSTED NET OPERATING INCOME						
ASSUMED RATE BASE:						
TELEPHONE PLANT IN SERVICE						
PROPERTY HELD FUTURE USE						
PREPAID PENSIONS						
LESS:						
DEPRECIATION RESERVE						
AMORTIZATION RESERVE						
DEFERRED FEDERAL INCOME TAX						
Subtract:						
OPEBS Liability						
COMMISSION RATE BASE						

COMMISSION RATE OF RETURN

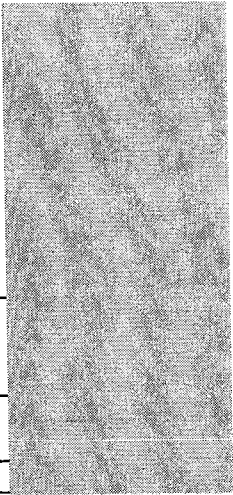
* CURRENT MONTH AMOUNTS ARE BASED ON END OF PERIOD BALANCES.
YEAR-TO-DATE RATE BASE IS BASED ON END OF PERIOD BALANCES.

** ADJUSTMENT TO MISCELLANEOUS REVENUE REFLECTS THE AMORTIZATION OF THE WASHINGTON PORTION OF THE GAIN RESULTING FROM UNITED'S PRIOR PARENT COMPANY SALE OF ITS DIRECTORY OPERATIONS AS SPECIFIED IN THE SETTLEMENT AGREEMENT IN DOCKET UT-051291. THE COMMISSION APPROVED THIS RATEMAKING TREATMENT IN ACCOUNTING ORDER 01, DOCKET UT-060861.

United Telephone - Northwest
Washington Access Line Information by Service
As of 07/31/2012
Confidential per WAC 480-07-160

REDACTED

One Party Single Line Business
One Party Multi-line Business
Public Paystation
Key Business Trunks
PBX Business Trunks
ISDN BRI Business
ISDN PRI Business
Centrex
Foreign Exchange



TOTAL BUSINESS

One Party Residence

TOTAL RESIDENCE

TOTAL LINES

United Telephone - Northwest
 Washington Access Line Information by Exchange
 As of 07/31/2012
 Confidential per WAC 480-07-160

REDACTED

EXCHANGE	NPA	NXX	ACCESS LINES
BICKLETON	509	896	
BRINNON	360	796	
CHIMACUM	360	732	
COLUMBIA	509	377	
DALLESPOUR	509	767	
GARDINER	360	797	
GLENWOOD	509	364	
GOLDENDALE	509	773	
GRANDVIEW	509	882	
GRANGER	509	854	
HARRAH	509	848	
KLICKITAT	509	369	
LYLE	509	365	
MABTON	509	894	
MATTAWA	509	932	
PATERSON	509	875	
POULSBO	360	315	
POULSBO	360	394	
POULSBO	360	396	
POULSBO	360	598	
POULSBO	360	697	
POULSBO	360	779	
PROSSER	509	786	
PROSSER	509	788	
QUILCENE	360	765	
ROOSEVELT	509	384	
STEVENSON	509	427	
SUNNYSIDE	509	836	
SUNNYSIDE	509	837	
SUNNYSIDE	509	839	
TOPPENISH	509	865	
TROUT LAKE	509	395	
WAPATO	509	877	
WHITE SALMON	509	493	
WHITE SWAN	509	874	
WHITSTRAN	509	973	
WILLARD	509	538	
WISHRAM	509	748	
ZILLAHA	509	829	
TOTAL ACCESS LINES BY EXCHANGE			

United Telephone - Northwest
Washington Access Line Information by Service
As of 08/31/2012
Confidential per WAC 480-07-160

REDACTED

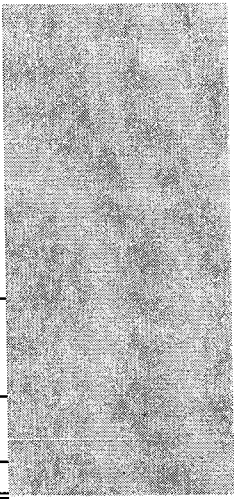
One Party Single Line Business
One Party Multi-line Business
Public Paystation
Key Business Trunks
PBX Business Trunks
ISDN BRI Business
ISDN PRI Business
Centrex
Foreign Exchange

TOTAL BUSINESS

One Party Residence

TOTAL RESIDENCE

TOTAL LINES



United Telephone - Northwest
 Washington Access Line Information by Exchange
 As of 08/31/2012
 Confidential per WAC 480-07-160

REDACTED

EXCHANGE	NPA	NXX	ACCESS LINES
BICKLETON	509	896	
BRINNON	360	796	
CHIMACUM	360	732	
COLUMBIA	509	377	
DALLESPORT	509	767	
GARDINER	360	797	
GLENWOOD	509	364	
GOLDENDALE	509	773	
GRANDVIEW	509	882	
GRANGER	509	854	
HARRAH	509	848	
KLICKITAT	509	369	
LYLE	509	365	
MABTON	509	894	
MATTAWA	509	932	
PATERSON	509	875	
POULSBO	360	315	
POULSBO	360	394	
POULSBO	360	396	
POULSBO	360	598	
POULSBO	360	697	
POULSBO	360	779	
PROSSER	509	786	
PROSSER	509	788	
QUILCENE	360	765	
ROOSEVELT	509	384	
STEVENSON	509	427	
SUNNYSIDE	509	836	
SUNNYSIDE	509	837	
SUNNYSIDE	509	839	
TOPPENISH	509	865	
TROUT LAKE	509	395	
WAPATO	509	877	
WHITE SALMON	509	493	
WHITE SWAN	509	874	
WHITSTRAN	509	973	
WILLARD	509	538	
WISHRAM	509	748	
ZILLAH	509	829	
TOTAL ACCESS LINES BY EXCHANGE			

United Telephone - Northwest
Washington Access Line Information by Service
As of 09/30/2012
Confidential per WAC 480-07-160

REDACTED

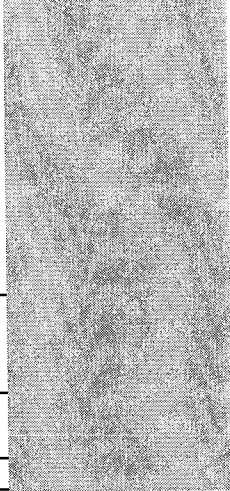
One Party Single Line Business
One Party Multi-line Business
Public Paystation
Key Business Trunks
PBX Business Trunks
ISDN BRI Business
ISDN PRI Business
Centrex
Foreign Exchange

TOTAL BUSINESS

One Party Residence

TOTAL RESIDENCE

TOTAL LINES



United Telephone - Northwest
 Washington Access Line Information by Exchange
 As of 09/30/2012
 Confidential per WAC 480-07-160

REDACTED

EXCHANGE	NPA	NXX	ACCESS LINES
BICKLETON	509	896	
BRINNON	360	796	
CHIMACUM	360	732	
COLUMBIA	509	377	
DALLESPORT	509	767	
GARDINER	360	797	
GLENWOOD	509	364	
GOLDENDALE	509	773	
GRANDVIEW	509	882	
GRANGER	509	854	
HARRAH	509	848	
KLICKITAT	509	369	
LYLE	509	365	
MABTON	509	894	
MATTAWA	509	932	
PATERSON	509	875	
POULSBO	360	315	
POULSBO	360	394	
POULSBO	360	396	
POULSBO	360	598	
POULSBO	360	697	
POULSBO	360	779	
PROSSER	509	786	
PROSSER	509	788	
QUILCENE	360	765	
ROOSEVELT	509	384	
STEVENSON	509	427	
SUNNYSIDE	509	836	
SUNNYSIDE	509	837	
SUNNYSIDE	509	839	
TOPPENISH	509	865	
TROUT LAKE	509	395	
WAPATO	509	877	
WHITE SALMON	509	493	
WHITE SWAN	509	874	
WHITSTRAN	509	973	
WILLARD	509	538	
WISHRAM	509	748	
ZILLAH	509	829	
TOTAL ACCESS LINES BY EXCHANGE			

COPY

COMPANY PROPRIETARY

United Telephone Company of the Northwest
Current Month Rate of Return - Washington
July 2012

REDACTED

[BEGIN CONFIDENTIAL]

OPERATING REVENUE:
UNIVERSAL SERVICE FUND
LOCAL SERVICE
NETWORK ACCESS SERVICE
LONG DISTANCE NETWORK SERVICE
MISCELLANEOUS
UNCOLLECTIBLES (DR)
TOTAL REVENUE

CURRENT MONTH	OPEBS	ADJUSTMENTS	TRUE LEVEL	INTERSTATE OPERATIONS	INTRASTATE OPERATIONS

OPERATING EXPENSES:
PLANT SPECIFIC
DEPRECIATION & AMORTIZATION
OTHER PLANT NON-SPECIFIC
CUSTOMER OPERATIONS
CORPORATE OPERATIONS
TOTAL OPERATING EXPENSE

--	--	--	--	--	--

OPERATING TAXES:
FEDERAL TAXES
STATE TAXES
OTHER TAXES
TOTAL OPERATING TAXES

--	--	--	--	--	--

OTHER OPERATING INC AND EXPENSE

--	--	--	--	--	--

NET OPERATING INCOME

--	--	--	--	--	--

NET INCOME EFFECT OF JURIS-
DICTIONAL DIFFERENCES

ADJUSTED NET OPERATING INCOME

--	--	--	--	--	--

ASSUMED RATE BASE:
TELEPHONE PLANT IN SERVICE
PROPERTY HELD FUTURE USE
PREPAID PENSIONS
LESS:
DEPRECIATION RESERVE
AMORTIZATION RESERVE
DEFERRED FEDERAL INCOME TAX

--	--	--	--	--	--

Subtract:
OPEBS Liability
COMMISSION RATE BASE

COMMISSION RATE OF RETURN
* CURRENT MONTH AMOUNTS ARE BASED ON END OF PERIOD BALANCES.
YEAR-TO-DATE RATE BASE IS BASED ON END OF PERIOD BALANCES.

** ADJUSTMENT TO MISCELLANEOUS REVENUE REFLECTS THE AMORTIZATION OF THE WASHINGTON PORTION OF THE GAIN RESULTING FROM UNITED'S PRIOR PARENT COMPANY SALE OF ITS DIRECTORY OPERATIONS AS SPECIFIED IN THE SETTLEMENT AGREEMENT IN DOCKET UT-051291. THE COMMISSION APPROVED THIS RATEMAKING TREATMENT IN ACCOUNTING ORDER 01, DOCKET UT-060861.



COMPANY PROPRIETARY

REDACTED

United Telephone - Northwest
12 MONTH Rate of Return - Washington
July 2012

	YR TO DATE THIS MONTH	OPEBS	ADJUSTMENTS	TRUE LEVEL	INTERSTATE OPERATIONS	INTRASTATE OPERATIONS
OPERATING REVENUE:						
USF & LIFELINE ADJUSTMENTS						
LOCAL SERVICE						
NETWORK ACCESS SERVICE						
LONG DISTANCE NETWORK SERVICE						
MISCELLANEOUS						
UNCOLLECTIBLES (DR)						
TOTAL REVENUE						
OPERATING EXPENSES:						
PLANT SPECIFIC						
DEPRECIATION & AMORTIZATION						
OTHER PLANT NON-SPECIFIC						
CUSTOMER OPERATIONS						
CORPORATE OPERATIONS						
TOTAL OPERATING EXPENSE						
OPERATING TAXES:						
FEDERAL TAXES						
STATE TAXES						
OTHER TAXES						
TOTAL OPERATING TAXES						
OTHER OPERATING INC AND EXPENSE						
NET OPERATING INCOME						
NET INCOME EFFECT OF JURIS- DICTIONAL DIFFERENCES						
ADJUSTED NET OPERATING INCOME						
ASSUMED RATE BASE:						
TELEPHONE PLANT IN SERVICE						
PROPERTY HELD FUTURE USE						
PREPAID PENSIONS						
LESS:						
DEPRECIATION RESERVE						
AMORTIZATION RESERVE						
DEFERRED FEDERAL INCOME TAX						
Subtract:						
OPEBS Liability						
COMMISSION RATE BASE						

COMMISSION RATE OF RETURN

* CURRENT MONTH AMOUNTS ARE BASED ON END OF PERIOD BALANCES.
YEAR-TO-DATE RATE BASE IS BASED ON END OF PERIOD BALANCES.

** ADJUSTMENT TO MISCELLANEOUS REVENUE REFLECTS THE AMORTIZATION OF THE WASHINGTON PORTION OF THE GAIN RESULTING FROM UNITED'S PRIOR PARENT COMPANY SALE OF ITS DIRECTORY OPERATIONS AS SPECIFIED IN THE SETTLEMENT AGREEMENT IN DOCKET UT-051291. THE COMMISSION APPROVED THIS RATEMAKING TREATMENT IN ACCOUNTING ORDER 01, DOCKET UT-060861.

COMPANY PROPRIETARY

United Telephone Company of the Northwest
Current Month Rate of Return - Washington
August 2012

REDACTED

	CURRENT MONTH	OPEBS	ADJUSTMENTS	TRUE LEVEL	INTERSTATE OPERATIONS	INTRASTATE OPERATIONS
OPERATING REVENUE:						
UNIVERSAL SERVICE FUND						
LOCAL SERVICE						
NETWORK ACCESS SERVICE						
LONG DISTANCE NETWORK SERVICE						
MISCELLANEOUS						
UNCOLLECTIBLES (DR)						
TOTAL REVENUE						
OPERATING EXPENSES:						
PLANT SPECIFIC						
DEPRECIATION & AMORTIZATION						
OTHER PLANT NON-SPECIFIC						
CUSTOMER OPERATIONS						
CORPORATE OPERATIONS						
TOTAL OPERATING EXPENSE						
OPERATING TAXES:						
FEDERAL TAXES						
STATE TAXES						
OTHER TAXES						
TOTAL OPERATING TAXES						
OTHER OPERATING INC AND EXPENSE						
NET OPERATING INCOME						
NET INCOME EFFECT OF JURIS- DICTIONAL DIFFERENCES						
ADJUSTED NET OPERATING INCOME						
ASSUMED RATE BASE:						
TELEPHONE PLANT IN SERVICE						
PROPERTY HELD FUTURE USE						
PREPAID PENSIONS						
LESS:						
DEPRECIATION RESERVE						
AMORTIZATION RESERVE						
DEFERRED FEDERAL INCOME TAX						
Subtract:						
OPEBS Liability						
COMMISSION RATE BASE						

COMMISSION RATE OF RETURN
* CURRENT MONTH AMOUNTS ARE BASED ON END OF PERIOD BALANCES.
YEAR-TO-DATE RATE BASE IS BASED ON END OF PERIOD BALANCES.

** ADJUSTMENT TO MISCELLANEOUS REVENUE REFLECTS THE AMORTIZATION OF THE WASHINGTON PORTION OF THE GAIN RESULTING FROM UNITED'S PRIOR PARENT COMPANY SALE OF ITS DIRECTORY OPERATIONS AS SPECIFIED IN THE SETTLEMENT AGREEMENT IN DOCKET UT-051291. THE COMMISSION APPROVED THIS RATEMAKING TREATMENT IN ACCOUNTING ORDER 01, DOCKET UT-060861.



COMPANY PROPRIETARY

REDACTED

United Telephone - Northwest
12 MONTH Rate of Return - Washington
August 2012

	YR TO DATE THIS MONTH	OPEBS	ADJUSTMENTS	TRUE LEVEL	INTERSTATE OPERATIONS	INTRASTATE OPERATIONS
OPERATING REVENUE:						
USF & LIFELINE ADJUSTMENTS						
LOCAL SERVICE						
NETWORK ACCESS SERVICE						
LONG DISTANCE NETWORK SERVICE						
MISCELLANEOUS						
UNCOLLECTIBLES (DR)						
TOTAL REVENUE						
OPERATING EXPENSES:						
PLANT SPECIFIC						
DEPRECIATION & AMORTIZATION						
OTHER PLANT NON-SPECIFIC						
CUSTOMER OPERATIONS						
CORPORATE OPERATIONS						
TOTAL OPERATING EXPENSE						
OPERATING TAXES:						
FEDERAL TAXES						
STATE TAXES						
OTHER TAXES						
TOTAL OPERATING TAXES						
OTHER OPERATING INC AND EXPENSE						
NET OPERATING INCOME						
NET INCOME EFFECT OF JURIS- DICTIONAL DIFFERENCES						
ADJUSTED NET OPERATING INCOME						
ASSUMED RATE BASE:						
TELEPHONE PLANT IN SERVICE						
PROPERTY HELD FUTURE USE						
PREPAID PENSIONS						
LESS:						
DEPRECIATION RESERVE						
AMORTIZATION RESERVE						
DEFERRED FEDERAL INCOME TAX						
Subtract:						
OPEBS Liability						
COMMISSION RATE BASE						

COMMISSION RATE OF RETURN

* CURRENT MONTH AMOUNTS ARE BASED ON END OF PERIOD BALANCES.
YEAR-TO-DATE RATE BASE IS BASED ON END OF PERIOD BALANCES.

** ADJUSTMENT TO MISCELLANEOUS REVENUE REFLECTS THE AMORTIZATION OF THE WASHINGTON PORTION OF THE GAIN RESULTING FROM UNITED'S PRIOR PARENT COMPANY SALE OF ITS DIRECTORY OPERATIONS AS SPECIFIED IN THE SETTLEMENT AGREEMENT IN DOCKET UT-051291. THE COMMISSION APPROVED THIS RATEMAKING TREATMENT IN ACCOUNTING ORDER 01, DOCKET UT-060861.

COMPANY PROPRIETARY

United Telephone Company of the Northwest
Current Month Rate of Return - Washington
September 2012

REDACTED

	CURRENT MONTH	OPEBS	ADJUSTMENTS	TRUE LEVEL	INTERSTATE OPERATIONS	INTRASTATE OPERATIONS
OPERATING REVENUE:						
UNIVERSAL SERVICE FUND						
LOCAL SERVICE						
NETWORK ACCESS SERVICE						
LONG DISTANCE NETWORK SERVICE						
MISCELLANEOUS						
UNCOLLECTIBLES (DR)						
TOTAL REVENUE						
OPERATING EXPENSES:						
PLANT SPECIFIC						
DEPRECIATION & AMORTIZATION						
OTHER PLANT NON-SPECIFIC						
CUSTOMER OPERATIONS						
CORPORATE OPERATIONS						
TOTAL OPERATING EXPENSE						
OPERATING TAXES:						
FEDERAL TAXES						
STATE TAXES						
OTHER TAXES						
TOTAL OPERATING TAXES						
OTHER OPERATING INC AND EXPENSE						
NET OPERATING INCOME						
NET INCOME EFFECT OF JURIS- DICTIONAL DIFFERENCES						
ADJUSTED NET OPERATING INCOME						
ASSUMED RATE BASE:						
TELEPHONE PLANT IN SERVICE						
PROPERTY HELD FUTURE USE						
PREPAID PENSIONS						
LESS:						
DEPRECIATION RESERVE						
AMORTIZATION RESERVE						
DEFERRED FEDERAL INCOME TAX						
Subtract:						
OPEBS Liability						
COMMISSION RATE BASE						

COMMISSION RATE OF RETURN
* CURRENT MONTH AMOUNTS ARE BASED ON END OF PERIOD BALANCES.
YEAR-TO-DATE RATE BASE IS BASED ON END OF PERIOD BALANCES.

** ADJUSTMENT TO MISCELLANEOUS REVENUE REFLECTS THE AMORTIZATION OF THE WASHINGTON PORTION OF THE GAIN RESULTING FROM UNITED'S PRIOR PARENT COMPANY SALE OF ITS DIRECTORY OPERATIONS AS SPECIFIED IN THE SETTLEMENT AGREEMENT IN DOCKET UT-051291. THE COMMISSION APPROVED THIS RATEMAKING TREATMENT IN ACCOUNTING ORDER 01, DOCKET UT-060861.



COMPANY PROPRIETARY

REDACTED

United Telephone - Northwest
12 MONTH Rate of Return - Washington
September 2012

	YR TO DATE THIS MONTH	OPEBS	ADJUSTMENTS	TRUE LEVEL	INTERSTATE OPERATIONS	INTRASTATE OPERATIONS
OPERATING REVENUE:						
USF & LIFELINE ADJUSTMENTS						
LOCAL SERVICE						
NETWORK ACCESS SERVICE						
LONG DISTANCE NETWORK SERVICE						
MISCELLANEOUS						
UNCOLLECTIBLES (DR)						
TOTAL REVENUE						
OPERATING EXPENSES:						
PLANT SPECIFIC						
DEPRECIATION & AMORTIZATION						
OTHER PLANT NON-SPECIFIC						
CUSTOMER OPERATIONS						
CORPORATE OPERATIONS						
TOTAL OPERATING EXPENSE						
OPERATING TAXES:						
FEDERAL TAXES						
STATE TAXES						
OTHER TAXES						
TOTAL OPERATING TAXES						
OTHER OPERATING INC AND EXPENSE						
NET OPERATING INCOME						
NET INCOME EFFECT OF JURIS- DICTIONAL DIFFERENCES						
ADJUSTED NET OPERATING INCOME						
ASSUMED RATE BASE:						
TELEPHONE PLANT IN SERVICE						
PROPERTY HELD FUTURE USE						
PREPAID PENSIONS						
LESS:						
DEPRECIATION RESERVE						
AMORTIZATION RESERVE						
DEFERRED FEDERAL INCOME TAX						
Subtract:						
OPEBS Liability						
COMMISSION RATE BASE						

COMMISSION RATE OF RETURN
* CURRENT MONTH AMOUNTS ARE BASED ON END OF PERIOD BALANCES.
YEAR-TO-DATE RATE BASE IS BASED ON END OF PERIOD BALANCES.

** ADJUSTMENT TO MISCELLANEOUS REVENUE REFLECTS THE AMORTIZATION OF THE WASHINGTON PORTION OF THE GAIN RESULTING FROM UNITED'S PRIOR PARENT COMPANY SALE OF ITS DIRECTORY OPERATIONS AS SPECIFIED IN THE SETTLEMENT AGREEMENT IN DOCKET UT-051291. THE COMMISSION APPROVED THIS RATEMAKING TREATMENT IN ACCOUNTING ORDER 01, DOCKET UT-060861.

United Telephone - Northwest
Washington Access Line Information by Service
As of 07/31/2012
Confidential per WAC 480-07-160

REDACTED

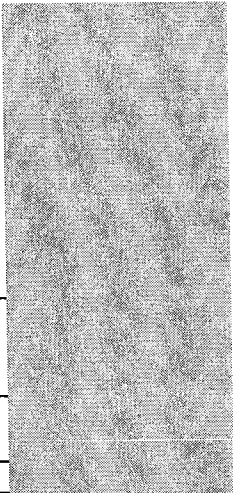
One Party Single Line Business
One Party Multi-line Business
Public Paystation
Key Business Trunks
PBX Business Trunks
ISDN BRI Business
ISDN PRI Business
Centrex
Foreign Exchange

TOTAL BUSINESS

One Party Residence

TOTAL RESIDENCE

TOTAL LINES



United Telephone - Northwest
 Washington Access Line Information by Exchange
 As of 07/31/2012
 Confidential per WAC 480-07-160

REDACTED

EXCHANGE	NPA	NXX	ACCESS LINES
BICKLETON	509	896	
BRINNON	360	796	
CHIMACUM	360	732	
COLUMBIA	509	377	
DALLESPORT	509	767	
GARDINER	360	797	
GLENWOOD	509	364	
GOLDENDALE	509	773	
GRANDVIEW	509	882	
GRANGER	509	854	
HARRAH	509	848	
KLICKITAT	509	369	
LYLE	509	365	
MABTON	509	894	
MATTAWA	509	932	
PATERSON	509	875	
POULSBO	360	315	
POULSBO	360	394	
POULSBO	360	396	
POULSBO	360	598	
POULSBO	360	697	
POULSBO	360	779	
PROSSER	509	786	
PROSSER	509	788	
QUILCENE	360	765	
ROOSEVELT	509	384	
STEVENSON	509	427	
SUNNYSIDE	509	836	
SUNNYSIDE	509	837	
SUNNYSIDE	509	839	
TOPPENISH	509	865	
TROUT LAKE	509	395	
WAPATO	509	877	
WHITE SALMON	509	493	
WHITE SWAN	509	874	
WHITSTRAN	509	973	
WILLARD	509	538	
WISHRAM	509	748	
ZILLA	509	829	
TOTAL ACCESS LINES BY EXCHANGE			

United Telephone - Northwest
Washington Access Line Information by Service
As of 08/31/2012
Confidential per WAC 480-07-160

REDACTED

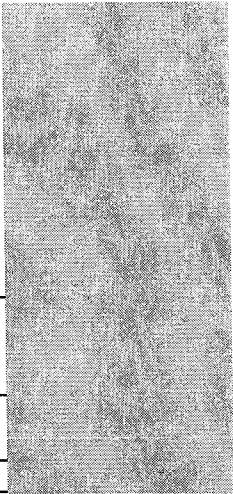
One Party Single Line Business
One Party Multi-line Business
Public Paystation
Key Business Trunks
PBX Business Trunks
ISDN BRI Business
ISDN PRI Business
Centrex
Foreign Exchange

TOTAL BUSINESS

One Party Residence

TOTAL RESIDENCE

TOTAL LINES



United Telephone - Northwest
 Washington Access Line Information by Exchange
 As of 08/31/2012
 Confidential per WAC 480-07-160

REDACTED

EXCHANGE	NPA	NXX	ACCESS LINES
BICKLETON	509	896	
BRINNON	360	796	
CHIMACUM	360	732	
COLUMBIA	509	377	
DALLESFORT	509	767	
GARDINER	360	797	
GLENWOOD	509	364	
GOLDENDALE	509	773	
GRANDVIEW	509	882	
GRANGER	509	854	
HARRAH	509	848	
KLICKITAT	509	369	
LYLE	509	365	
MABTON	509	894	
MATTAWA	509	932	
PATERSON	509	875	
POULSBO	360	315	
POULSBO	360	394	
POULSBO	360	396	
POULSBO	360	598	
POULSBO	360	697	
POULSBO	360	779	
PROSSER	509	786	
PROSSER	509	788	
QUILCENE	360	765	
ROOSEVELT	509	384	
STEVENSON	509	427	
SUNNYSIDE	509	836	
SUNNYSIDE	509	837	
SUNNYSIDE	509	839	
TOPPENISH	509	865	
TROUT LAKE	509	395	
WAPATO	509	877	
WHITE SALMON	509	493	
WHITE SWAN	509	874	
WHITSTRAN	509	973	
WILLARD	509	538	
WISHRAM	509	748	
ZILLAH	509	829	
TOTAL ACCESS LINES BY EXCHANGE			

United Telephone - Northwest
Washington Access Line Information by Service
As of 09/30/2012
Confidential per WAC 480-07-160

REDACTED

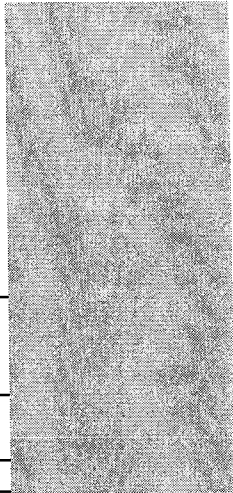
One Party Single Line Business
One Party Multi-line Business
Public Paystation
Key Business Trunks
PBX Business Trunks
ISDN BRI Business
ISDN PRI Business
Centrex
Foreign Exchange

TOTAL BUSINESS

One Party Residence

TOTAL RESIDENCE

TOTAL LINES



United Telephone - Northwest
 Washington Access Line Information by Exchange
 As of 09/30/2012
 Confidential per WAC 480-07-160

REDACTED

EXCHANGE	NPA	NXX	ACCESS LINES
BICKLETON	509	896	
BRINNON	360	796	
CHIMACUM	360	732	
COLUMBIA	509	377	
DALLESFORT	509	767	
GARDINER	360	797	
GLENWOOD	509	364	
GOLDENDALE	509	773	
GRANDVIEW	509	882	
GRANGER	509	854	
HARRAH	509	848	
KLICKITAT	509	369	
LYLE	509	365	
MABTON	509	894	
MATTAWA	509	932	
PATERSON	509	875	
POULSBO	360	315	
POULSBO	360	394	
POULSBO	360	396	
POULSBO	360	598	
POULSBO	360	697	
POULSBO	360	779	
PROSSER	509	786	
PROSSER	509	788	
QUILCENE	360	765	
ROOSEVELT	509	384	
STEVENSON	509	427	
SUNNYSIDE	509	836	
SUNNYSIDE	509	837	
SUNNYSIDE	509	839	
TOPPENISH	509	865	
TROUT LAKE	509	395	
WAPATO	509	877	
WHITE SALMON	509	493	
WHITE SWAN	509	874	
WHITSTRAN	509	973	
WILLARD	509	538	
WISHRAM	509	748	
ZILLAH	509	829	
TOTAL ACCESS LINES BY EXCHANGE			