

UT-120792-SI



100 CenturyLink Drive
Monroe, La. 71203
Tel: 318-388-9000

May 31, 2012

Mr. David W. Danner
Executive Director and Secretary
Washington Utilities & Transportation Commission
1300 S. Evergreen Park Dr. SW
Olympia, WA 98504

RECEIVED
RECORDS MANAGEMENT
2012 JUN - 1 AM 11: 17
STATE OF WASHINGTON
UTIL. AND TRANS.
COMMISSION

RE: WAC 480-120-395

CenturyTel of Washington, Inc. d/b/a CenturyLink }
CenturyTel of Inter Island, Inc. d/b/a CenturyLink } Combined Companies
CenturyTel of Cowiche, Inc. d/b/a CenturyLink }
United Telephone Company of the Northwest d/b/a CenturyLink

Attached are copies of the annual affiliated interest reports pursuant to WAC 480-120-395. These reports contain information for 2011.

These reports contain revenue and cost data that CenturyLink considers competitively valuable information and CenturyLink believes that it could be harmed if such information were made publicly available. Consequently, CenturyLink requests confidential designation for this data in accordance with WAC 480-07-160.

All questions regarding this correspondence should be addressed to:

Mr. Ted Hankins, Director - Regulatory Operations
P. O. Box 4065
Monroe, LA 71211-4065
318.388.9416

I would appreciate your forwarding any future correspondence associated with these submissions to my attention.

Sincerely,

Lisa Grantham
Director - Separations/Regulatory Finance

Enclosures

COMBINED COMPANIES

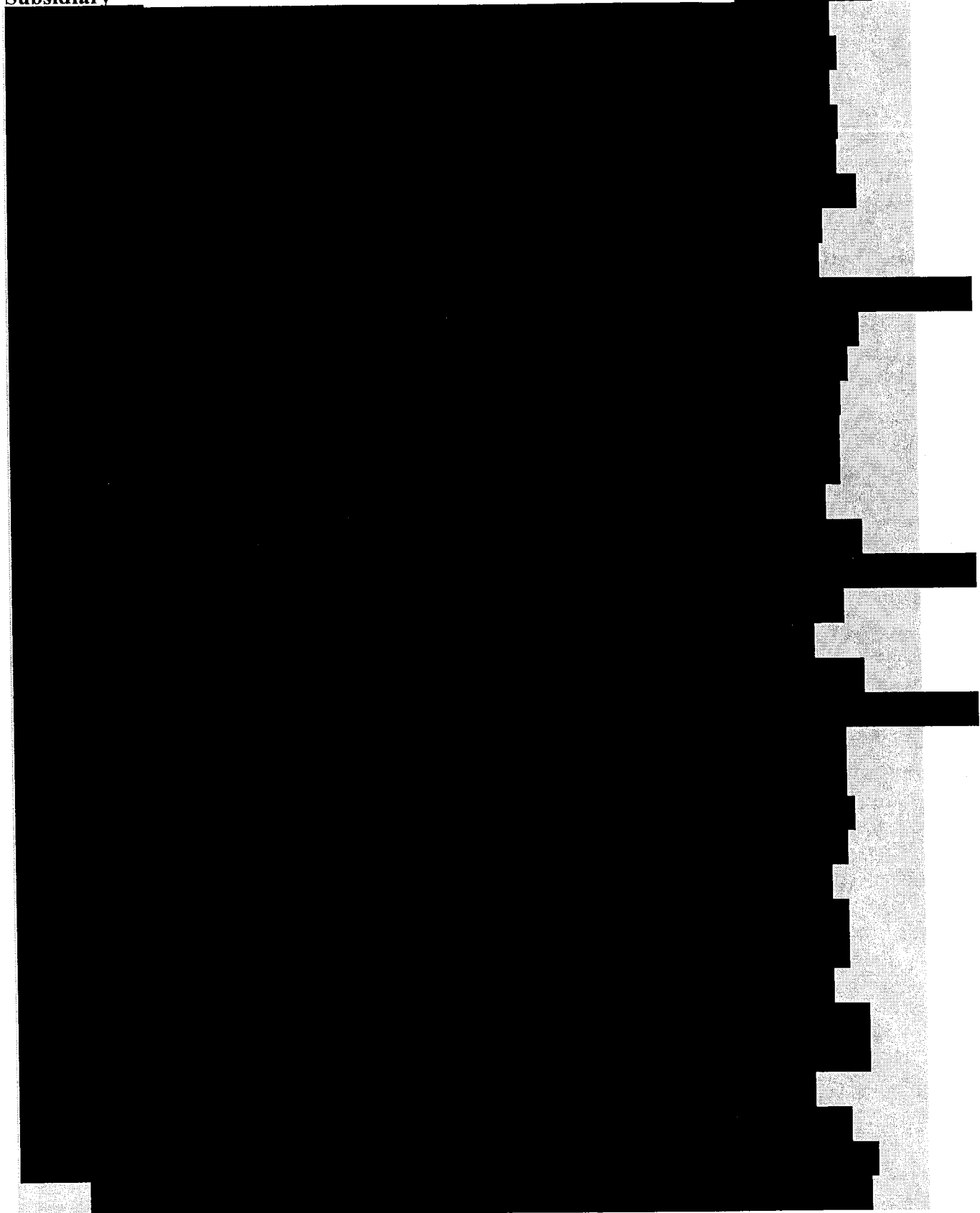
CenturyTel of Washington, Inc. d/b/a CenturyLink

CenturyTel of Inter Island, Inc. d/b/a CenturyLink

CenturyTel of Cowiche, Inc. d/b/a CenturyLink

Subsidiary

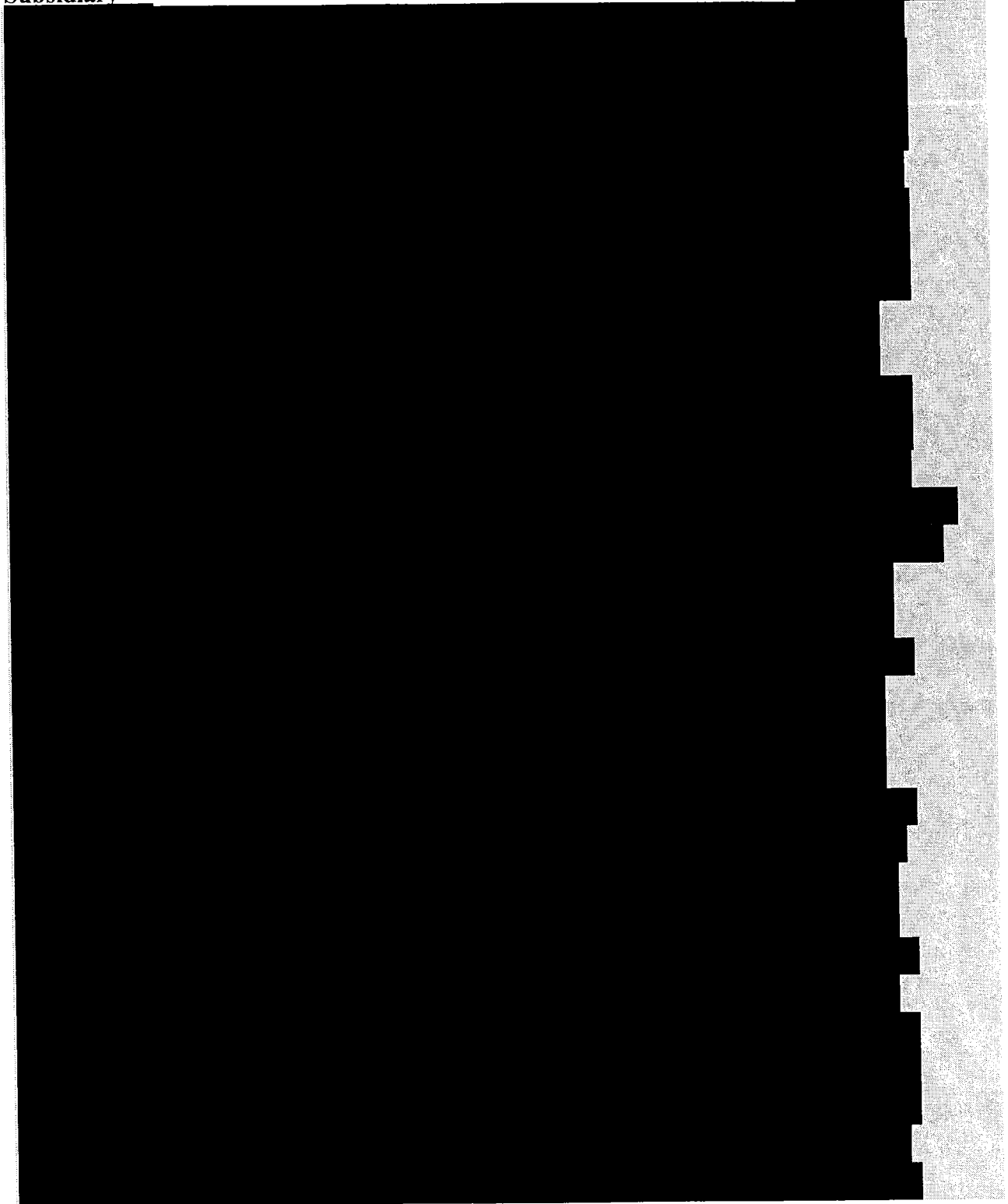
**State or
Jurisdiction of
Incorporation**



The table content is almost entirely obscured by a large black redaction box. Only the column headers and a few fragments of text are visible.

Subsidiary

**State or
Jurisdiction of
Incorporation**



² Formerly known as Embarq Solutions, Inc.

³ Owned 50% by Embarq Capital Corporation and 50% by United Telephone Company of Texas, Inc.

Subsidiary

**State or
Jurisdiction of
Incorporation**

⁴ Embarq Management Company is 99% limited partner, EQ Equipment Leasing, Inc. is 1% general partner.

⁵ Owned 80% by United Telephone Company of Kansas and 20% by United Telephone Company of Eastern Kansas.

⁶ Owned 20% by The United Telephone Company of Pennsylvania and 20% by United Telephone Southeast LLC

Subsidiary

**State or
Jurisdiction of
Incorporation**

⁷ Owned 39% by Madison River Communications Corp., 24% by Madison River Management LLC and 37% by Madison River LTD Funding LLC.

⁸ 100% of Class A Preferred stock owned by Gulf Telephone Company; 1% of Class B common member interests owned by Gulf Telephone Company and 99% of class B common member interests owned by Madison River Communications, LLC

Subsidiary

**State or
Jurisdiction of
Incorporation**

⁹ Formerly known as Qwest Asset Management Company

¹⁰ Owned 1.5% by Qwest Services Corporation as limited partner.

¹¹ Qwest India Holdings, LLC owns the majority or 510,000 shares of CenturyLink Technologies India Private Limited and Qwest Corporation owns 14,127 shares.

Subsidiary

**State or
Jurisdiction of
Incorporation**

¹² 1% owned by SAVVIS Communications International, Inc.

¹³ 0.1% owned by SAVVIS Communications International, Inc.

¹⁴ 5% owned by SAVVIS Communications International, Inc.

¹⁵ 0.2% owned by SAVVIS, Inc.

¹⁶ This company also has registered branches in Greece and Norway

¹⁷ Registered branch

¹⁸ 50% owned by SAVVIS Communications International, Inc. as nominee for SAVVIS, Inc.

Subsidiary

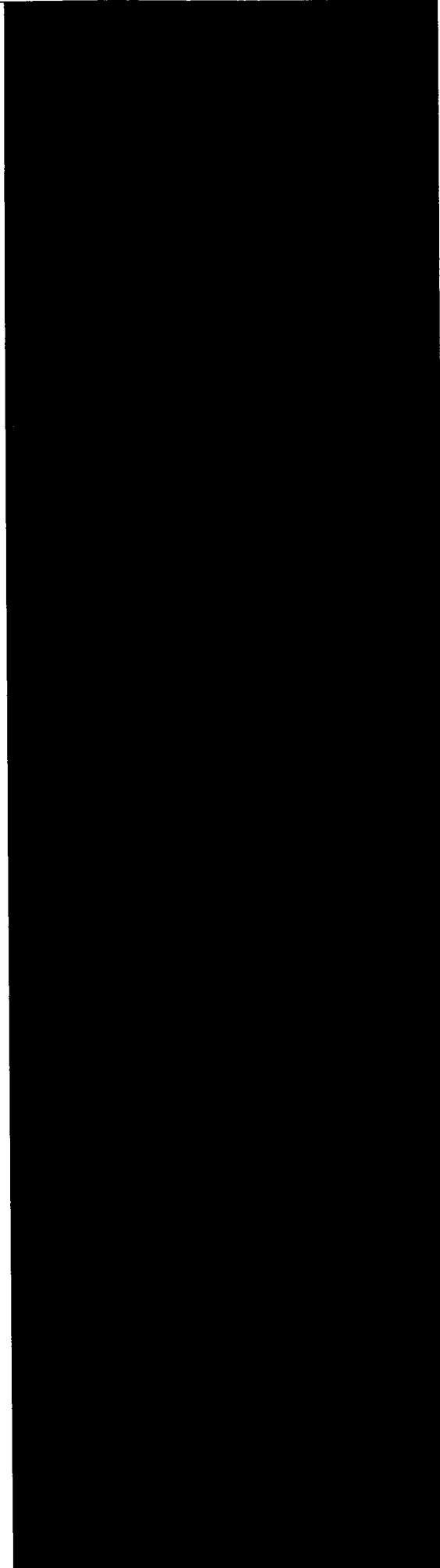
**State or
Jurisdiction of
Incorporation**

¹⁹ 5% owned by SAVVIS Communications International, Inc.

²⁰ 1% owned by SAVVIS Communications International, Inc.

²¹ Chinese name is the official name.

CenturyTel of Washington, CenturyTel of Interisland, CenturyTel of Cowiche
Affiliated Company Transactions
Attachment B
REDACTED
For the Year 2011



**All other CenturyLink companies comprise of affiliates that have less than 100K in transactions.

CONFIDENTIAL PER WAC 480-07-160

CenturyLink, Inc.
(Parent Company)

Balance Sheet
As of December 31, 2011
(In Thousands)

Total Assets and Other
Net Property, Plant and Equipment
Total Investments and Other Assets

TOTAL ASSETS

Total Liabilities and Other
Long-Term Debt
Total Stockholders' Equity

TOTAL LIABILITIES AND EQUITY

Statement of Income
As of December 31, 2011
(In Thousands)

Operating Revenues
Operating Expenses

OPERATING INCOME/LOSS
Total Other Income (Expense)

INCOME BEFORE INCOME TAX
Income Tax Expense

INCOME FROM CONTINUING OPERATIONS
Income from Discontinued Operations

NET INCOME

Embarq Management Company

Balance Sheet
As of December 31, 2011
(In Thousands)

Total Assets and Other
Net Plant
Other Investments

TOTAL ASSETS

Total Liabilities and Other
Long-Term Debt
Total Stockholders' Equity

TOTAL LIABILITIES AND EQUITY

Statement of Income
As of December 31, 2011
(In Thousands)

Operating Revenues
Operating Expenses

OPERATING INCOME/LOSS
Total Other Income (Expense)

INCOME (LOSS) BEFORE INCOME TAXES

Income Tax Benefit (Expense)

NET INCOME

Embarq Network Company, LLC

Balance Sheet
As of December 31, 2011
(In Thousands)

Total Assets and Other
Net Plant
Other Investments

TOTAL ASSETS

Total Liabilities and Other
Long-Term Debt
Total Stockholders' Equity

TOTAL LIABILITIES AND EQUITY

Statement of Income
As of December 31, 2011
(In Thousands)

Operating Revenues
Operating Expenses

OPERATING INCOME/LOSS
Total Other Income (Expense)

INCOME (LOSS) BEFORE INCOME TAXES

Income Tax Benefit (Expense)

NET INCOME

Embarq Mid-Atlantic Management Services Company

Balance Sheet
As of December 31, 2011
(In Thousands)

Total Assets and Other
Net Plant
Other Investments

TOTAL ASSETS

Total Liabilities and Other
Long-Term Debt
Total Stockholders' Equity

TOTAL LIABILITIES AND EQUITY

Statement of Income
As of December 31, 2011
(In Thousands)

Operating Revenues
Operating Expenses

OPERATING INCOME/LOSS
Total Other Income (Expense)

INCOME (LOSS) BEFORE INCOME TAXES

Income Tax Benefit (Expense)

NET INCOME

Embarq Midwest Management Services Company

Balance Sheet
As of December 31, 2011
(In Thousands)

Total Assets and Other
Net Plant
Other Investments

TOTAL ASSETS

Total Liabilities and Other
Long-Term Debt
Total Stockholders' Equity

TOTAL LIABILITIES AND EQUITY

Statement of Income
As of December 31, 2011
(In Thousands)

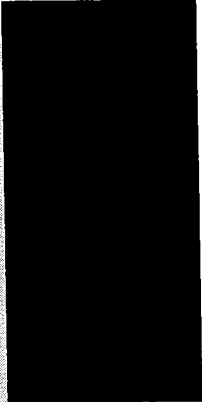
Operating Revenues
Operating Expenses

OPERATING INCOME/LOSS
Total Other Income (Expense)

INCOME (LOSS) BEFORE INCOME TAXES

Income Tax Benefit (Expense)

NET INCOME



CenturyTel Service Group, LLC

Balance Sheet
As of December 31, 2011
(In Thousands)

Total Assets and Other
Net Plant
Other Investments

TOTAL ASSETS

Total Liabilities and Other
Long-Term Debt
Total Stockholders' Equity

TOTAL LIABILITIES AND EQUITY

Statement of Income
As of December 31, 2011
(In Thousands)

Operating Revenues
Operating Expenses

OPERATING INCOME/LOSS
Total Other Income (Expense)

INCOME (LOSS) BEFORE INCOME TAXES

Income Tax Benefit (Expense)

NET INCOME

CenturyTel Supply Group, Inc.

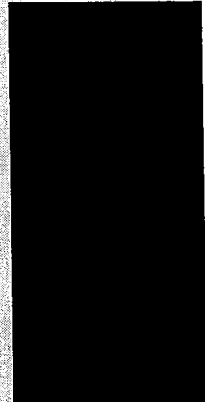
Balance Sheet
As of December 31, 2011
(In Thousands)

Current Assets
Non-Current Assets/DeReg Inventory
Net Plant

TOTAL ASSETS

Current Liabilities
Long Term and Other Liabilities
Total Stockholders' Equity

TOTAL LIABILITIES AND EQUITY



Statement of Income
As of December 31, 2011
(In Thousands)

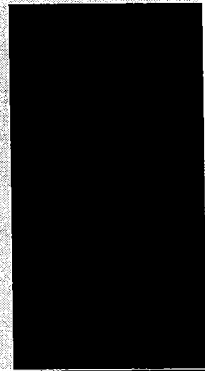
Operating Revenues
Operating Expenses

OPERATING INCOME/LOSS
Total Other Income (Expense)

INCOME (LOSS) BEFORE INCOME TAXES

Income Tax Benefit (Expense)

NET INCOME(LOSS)



CenturyTel Holding Missouri, Inc.

Balance Sheet
As of December 31, 2011
(In Thousands)

Current Assets
Non-Current Assets/DeReg Inventory
Net Plant

TOTAL ASSETS

Current Liabilities
Deferred & Other Liabilities
Total Stockholders' Equity

TOTAL LIABILITIES AND EQUITY

Statement of Income
As of December 31, 2011
(In Thousands)

Operating Revenues
Operating Expenses

OPERATING INCOME/LOSS
Total Other Income (Expense)

INCOME (LOSS) BEFORE INCOME TAXES

Income Tax Benefit (Expense)

NET INCOME(LOSS)

United Telephone Company of the Northwest

Balance Sheet
As of December 31, 2011
(In Thousands)

Total Assets and Other
Investments & Other Non-Current Assets
Net Plant

TOTAL ASSETS

Current Liabilities
Deferred & Other Liabilities
Total Stockholders' Equity

TOTAL LIABILITIES AND EQUITY

Statement of Income
As of December 31, 2011
(In Thousands)

Operating Revenues
Operating Expenses

OPERATING INCOME/LOSS
Total Other Income (Expense)

INCOME BEFORE INCOME TAX
Income Tax Expense

NET INCOME(LOSS)

**Embarq Florida, Inc.
(Central Florida)**

Balance Sheet
As of December 31, 2011
(In Thousands)

Total Assets and Other
Investments & Other Non-Current Assets
Net Plant

TOTAL ASSETS

Current Liabilities
Deferred & Other Liabilities
Total Stockholders' Equity

TOTAL LIABILITIES AND EQUITY

Statement of Income
As of December 31, 2011
(In Thousands)

Operating Revenues
Operating Expenses

OPERATING INCOME/LOSS
Total Other Income (Expense)

INCOME BEFORE INCOME TAX
Income Tax Expense

NET INCOME(LOSS)

CenturyTel Broadband Services, LLC

Balance Sheet
As of December 31, 2011
(In Thousands)

Current Assets
Investments & Other Non-Current Assets
Net Plant

TOTAL ASSETS

Current Liabilities
Deferred & Other Liabilities
Total Stockholders' Equity

TOTAL LIABILITIES AND EQUITY

Statement of Income
As of December 31, 2011
(In Thousands)

Revenues

Cost of Sales
Other Expenses

OPERATING INCOME (LOSS)
Other Income (Expense)

INCOME (LOSS) BEFORE TAXES
Income Taxes

NET INCOME(LOSS)

CenturyTel Long Distance, LLC

Balance Sheet
As of December 31, 2011
(In Thousands)

Cash and Equivalents
Other Current Assets
Net Plant

TOTAL ASSETS

Current Liabilities
Deferred & Other Liabilities
Total Equity

TOTAL LIABILITIES AND EQUITY

Statement of Income
As of December 31, 2011
(In Thousands)

Sales

Operating Expenses

GROSS MARGIN

Other Expenses

NET OPERATING INCOME

Other Income and (Expense)

NET INCOME(LOSS)
