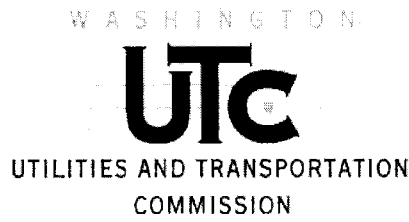


TR-120037



1300 S. Evergreen Park Drive SW  
PO Box 47250  
Olympia, WA 98504-7250  
(360)664-1257 or (360)664-1100  
Fax: (360)586-1150  
Web: [www.utc.wa.gov](http://www.utc.wa.gov)  
E-mail: [records@utc.wa.gov](mailto:records@utc.wa.gov)

*Revised*

**GRADE CROSSING PROTECTIVE FUND  
2011 – 2013 GRANT APPLICATION  
OPEN CALL FOR PROJECTS**

The Washington Utilities and Transportation Commission (Commission), through its Grade Crossing Protective Fund (GCPF), provides grants for projects that eliminate or mitigate public safety hazards at railroad crossings and along railroad rights-of-way in Washington State. Any public, private or non-profit entity may submit an application to the Commission for a GCPF grant.

**To apply for a grant to eliminate or mitigate a public safety hazard at a railroad crossing or along a railroad right-of-way, complete the following information and submit it and any attachments to the Commission.**

**Applicant Information**

Applicant Name: Monica Overby

Signature: monica.overby@soundtransit.org  
Digitally signed by monica.overby@soundtransit.org  
 DN: cn=monica.overby@soundtransit.org  
 Date: 2012.02.06 09:41:47 -08'00'

Organization: Sound Transit

Address: 401 S Jackson Street

Phone: 206-689-4979

Email: Monica.Overby@soundtransit.org

Fax: 206-398-5223

**Trespass prevention projects** - These include fencing or other physical barriers that prevent trespassing on railroad rights-of-way, pedestrian warning devices, channeling devices, media or public relations campaigns and enforcement-related activities

**Project Information**

Attach additional sheets as necessary that provide the following:

- 1. A detailed summary of the hazard being addressed. Include any information about accidents or incidents at the site and photographs, drawings or other materials that support the application.**

RECEIVED - 6 PM 2:33  
STATE OF WASHINGTON  
UTILITY AND TRANSPORTATION  
COMMISSION

## GCPF Application Form – Open Call for Projects

In 2012 Sound Transit will introduce a new extension of commuter rail service from Tacoma south to Lakewood with two stops. There will be thirteen new and/or upgraded rail-grade crossings between the cities of Tacoma and Lakewood with the new extension.

Sound Transit currently provides seventy five (75) miles of Sounder Commuter Rail service connecting Tacoma, Seattle and Everett (spanning three counties, multiple population and employment centers). When fully complete, Sounder Commuter Rail will provide 82 miles of commuter rail service between Everett and the city of Lakewood. This corridor is also part of the 466-mile Pacific Northwest High Speed Rail line connecting Eugene-Portland-Tacoma-Seattle and Vancouver B.C. In 2010 Sounder provided 1.8 million boardings and over one million revenue vehicle miles.

In 2012 the public will encounter more trains each day, at speeds of up to 60 mph from services provided by Sound Transit and Tacoma Rail on the completed tracks. The public now only witnesses Tacoma rail freight service with trains operating at 20 mph with about three round trips weekly. When Sound Transit's Sounder commuter rail service extends to Lakewood, Sound Transit will provide five morning trains from Lakewood to Seattle in the morning and five return trains from Seattle to Lakewood in the afternoon. Also, as part of the National High Speed Rail project for the Pacific Northwest Corridor that will aim to double service between Seattle and Portland — from four daily trips to eight — by 2017, and operate up to 13 round trips by 2025, providing hourly daylight service between the two cities using these tracks.

Sound Transit is requesting WUTC Grade Crossing Protection funds to help kick-start its Commuter Rail Lakewood Extension Safety Education Outreach Campaign designed to educate the surrounding community about driving and pedestrian hazards and desired responses on or near a new extension of commuter rail service.

Vicinity maps and graphics are provided at the end of this application.

**2. A detailed summary of the proposed project and how it will eliminate or mitigate the hazard. Include any drawings or construction plans for the proposed project.**

Sound Transit is requesting WUTC Grade Crossing Protection funds to help implement its Commuter Rail Lakewood Extension Safety Education Outreach Campaign. The Campaign is designed to educate the surrounding community about driving and pedestrian hazards and desired responses on or near a new extension of commuter rail service. This project will implement a safety education outreach campaign designed to influence how rail safety information will be integrated into the existing communication network for the surrounding communities affected by the new extension of commuter rail service in their area. The Campaign is an important part of initiating and reinforcing

## GCPF Application Form – Open Call for Projects

safety education about rail-grade crossing hazards for drivers and pedestrians as a result of the thirteen additional rail-grade crossings between the cities of Tacoma and Lakewood. The Campaign is designed to inform, educate and encourage public participation to promote safe choices when driving and navigating around these highway rail-grade crossings. The Campaign will include rail grade-crossing safety education and outreach efforts, including conducting special workshops and/or public meetings to a variety of targeted audiences including transients/homeless, community business owners and employees, schools and school bus drivers, the general public and local law enforcement agencies. The Campaign will include distribution of materials, brochures and tools needed to educate and communicate with these targeted audiences that will for the first time experience daily passenger rail service within their area.

Sound Transit realizes the responsibility to educate people how to be safe from rail grade-crossing hazards. Sound Transit uses the Operation Lifesaver model of presentations conducted by OLI trained staff, advertising in local print ads, public service announcements on radio and television, placing posters and print ads at rail stations, parking facilities, in businesses, non-profits and local schools. In addition, Sound Transit looks for opportunities to reach the public through its website and popular social media sites such as Facebook and Twitter.

Sound Transit will also coordinate with the work that the Washington State Patrol (WSP) Roads and Rails Safety program has conducted. In January 2011, the Washington State Patrol initiated the Roads and Rails Safety emphasis in partnership with local and rail industry law enforcement. It is a part of the commercial vehicle safety enforcement and education effort that will increase freight mobility and commercial motor vehicle safety throughout the region and state. Other areas of focus in the program include railway crossing safety, ensuring the safe transportation and documentation of hazardous materials within intermodal containers, and checking both vehicles and drivers for appropriate documentation. Sound Transit will include WSP in its outreach efforts to help educate and enforce rail crossing safety.

The WUTC funds would be used toward costs of developing and publishing materials and brochures for distribution at various public meetings, workshops and events.

- 3. A list of all other companies, organizations, state agencies or local governments that may be involved in implementing this proposal, and the contact name, address and phone number for each (if known).**

Sound Transit is coordinating with the following agencies on this project:

GCPF Application Form – Open Call for Projects

WSDOT Rail – Mike Rowswell - Cascades HSR Safety Program Manager 360-705-7930 [rowswem@wsdot.wa.gov](mailto:rowswem@wsdot.wa.gov)

Burlington Northern Santa Fe – David W. Agee, Mgr. Field Safety Support (206) 625-6000

City of Tacoma/Tacoma Rail – Marc Robertson, Safety Mgr (253) 396-3393

WUTC Public Safety – Robert Boston (360) 664-1264

Washington State Patrol – Trooper Christopher Hooper, (360) 349-1260

4. **A cost estimate, including:**

a. **An itemized list of the total costs of the project.**

Sound Transit is requesting \$20,000 in WUTC Grade Crossing Protection funds for the Commuter Rail Lakewood Extension Safety Education Outreach Campaign. The WUTC funds would be used to kick-start the Campaign by implementing outreach methods and materials needed to educate the surrounding communities in advance of operational testing and revenue service of the new commuter rail extension. More specifically the funds will be used for the following activities:

Strategy	Task	Cost / WUTC Request
Secure meeting rooms; develop brochures, postcards, fact sheets, meeting notices; for approximately 40,000 residents, 5,000 businesses and approximately 37,000 military families assigned to Joint Base Lewis McCord	Secure meeting sites; furnish handouts, notifications and alerts; includes printing, mail house preparation and postage, and rental fees.	\$10,000.00
Obtain News print ads, web-ads and event sponsorships; Participate in local fairs and festivals	Use print ads to reach broader audience; sponsor ads in local written promotional pieces; Obtain sponsorships, advertise, hire translation services and purchase promotional items	\$ 10,000.00
<b>Total</b>		<b>\$20,000.00</b>

b. **Names of parties contributing to the project, including the applicant, and the amount each is contributing.**

Sound Transit is providing the local funds toward implementation of this Campaign. Sound Transit has also requested \$10,000 in funding from Operation Lifesaver to be used toward this Campaign.

5. **The name of the party responsible for long-term maintenance, such as repair of fencing.**

## GCPF Application Form – Open Call for Projects

This project will implement a safety education outreach campaign for the opening of revenue operations of the Sounder Commuter Rail service extension from Tacoma to Lakewood. There are no long-term maintenance or repair costs associated with this Campaign.

Sound Transit does maintain an-ongoing safety outreach program and is committed to providing a safe, secure and comfortable environment for employees, contractors and the public interacting with our systems. Safety is a critical element in successfully carrying out the goals of Sound Transit.

### 6. **An estimated timeline of the project.**

1<sup>st</sup> Quarter 2012 – June 2013

### 7. A description of how the project's success would be measured.

Sound Transit has adopted **performance measures** for Sounder commuter rail service. Performance measures are compiled on a monthly and quarterly basis and are also reported in the annual Service Implementation Plan. Below are the performance measures included in the Service Delivery Quarterly Performance Report to the CEO (available on Sound Transit's website, <http://www.soundtransit.org/News-and-Events/Service-News/Quarterly-Ridership.xml>). These performance measures will be used for the Lakewood-Seattle Sounder project.

- Total Boardings
- Boardings per Revenue Vehicle Hour
- Boardings per Trip
- Percentage of scheduled Trips Operated
- Cost-per-Boarding
- On-Time Performance
- Customer Complaints
- Preventable Accidents per Revenue Mile
- Total number of safety presentations and events

In addition to the standard performance measures identified above, Sound Transit will also maintain information about the targeted audiences/populations reached and responses received during the Campaign. Sound Transit is also able to provide information on the number of "hits" on ST's website/facebook/twitter sites related to the Campaign.

### 8. **Any other information the applicant believes would be useful to the Commission in considering the project.**

Sound Transit's mission is to provide a safe trip for all passengers and working with cities and towns along our train routes to raise awareness of safety issues. Sound Transit

## GCPF Application Form – Open Call for Projects

has the "Sounder Stay Safe and Sound" safety education campaign program designed to inform, educate and encourage public participation to promote safe choices when driving and walking around new and upgraded highway rail-grade crossings to promote safety both on and around the agency's service area of tracks and trains. The program targets public agency partners, general public, youth and schools, businesses, employees, bicyclists and all who conduct recreational activities in and around trains, tracks and stations. The program is being coordinated with communities, businesses, school districts, the railroads, regional transit agencies, Operation Lifesaver and local police to increase public awareness of the safety rules around trains, tracks and at the stations.

### **Railroad Commitment**

**If the applicant is not the railroad owning the crossing or the tracks, the applicant must submit the attached Railroad Commitment form completed by the railroad owning the crossing or tracks.**

Not applicable. Sound Transit is the rail owner of this segment.

### **Submitting the Application**

After completing the application, please send the original to:  
Washington Utilities and Transportation Commission  
Attention: Grade Crossing Protective Fund  
1300 S. Evergreen Park Drive SW  
PO Box 47250  
Olympia, WA 98504-7250

A signed application may be filed electronically at [records@utc.wa.gov](mailto:records@utc.wa.gov). When filing electronically, please specify "Grade Crossing Protective Fund" in the subject line.

### **Assistance**

For questions or assistance, please contact:

- Kathy Hunter at (360)664-1257 or by email at [khunter@utc.wa.gov](mailto:khunter@utc.wa.gov)
- David Pratt at (360)664-1100 or by email at [dpratt@utc.wa.gov](mailto:dpratt@utc.wa.gov)

**Railroad Commitment**

The undersigned represents the Railroad Company in the accompanying GCPF application.

We have reviewed the application and are satisfied that the conditions are the same as described by the applicant in this matter. We agree to allow construction, modification or demolition on a railroad right-of-way as described in the application.

\_\_\_\_\_  
Printed name of Railroad Representative

\_\_\_\_\_  
Signature of Railroad Representative

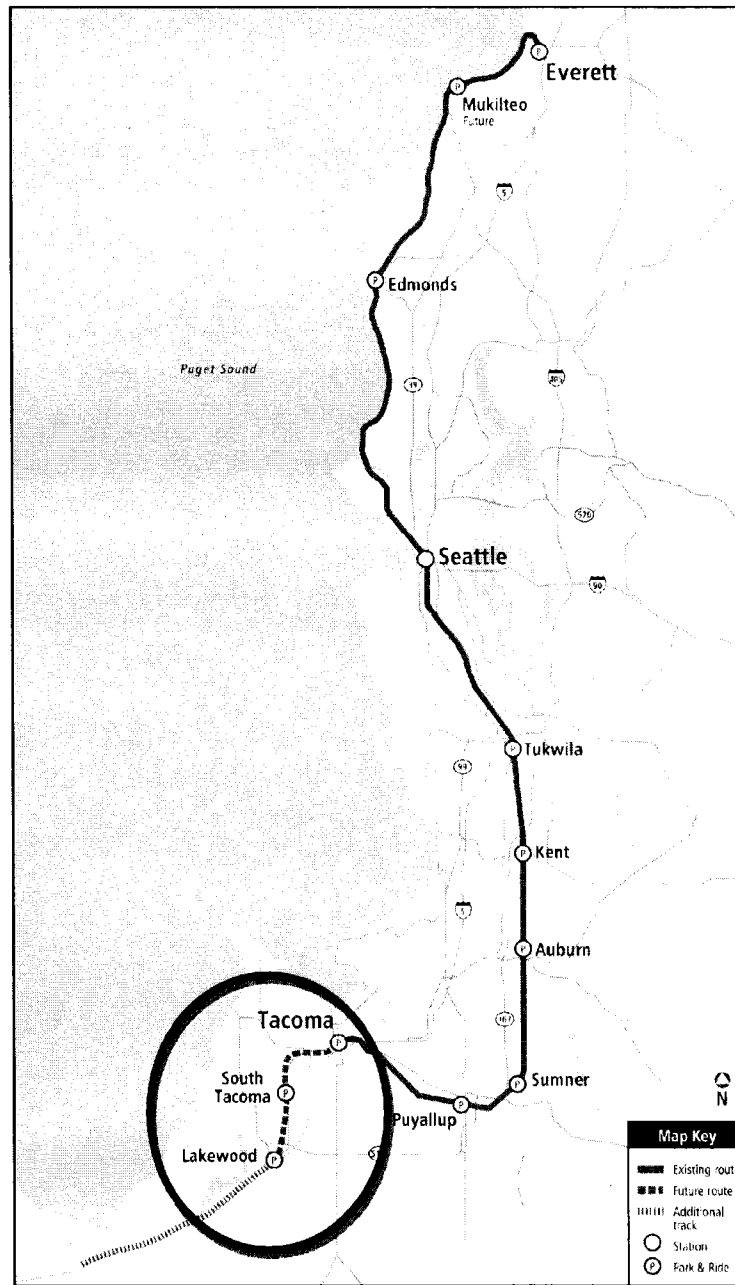
\_\_\_\_\_  
Title

\_\_\_\_\_  
Phone

\_\_\_\_\_  
Email

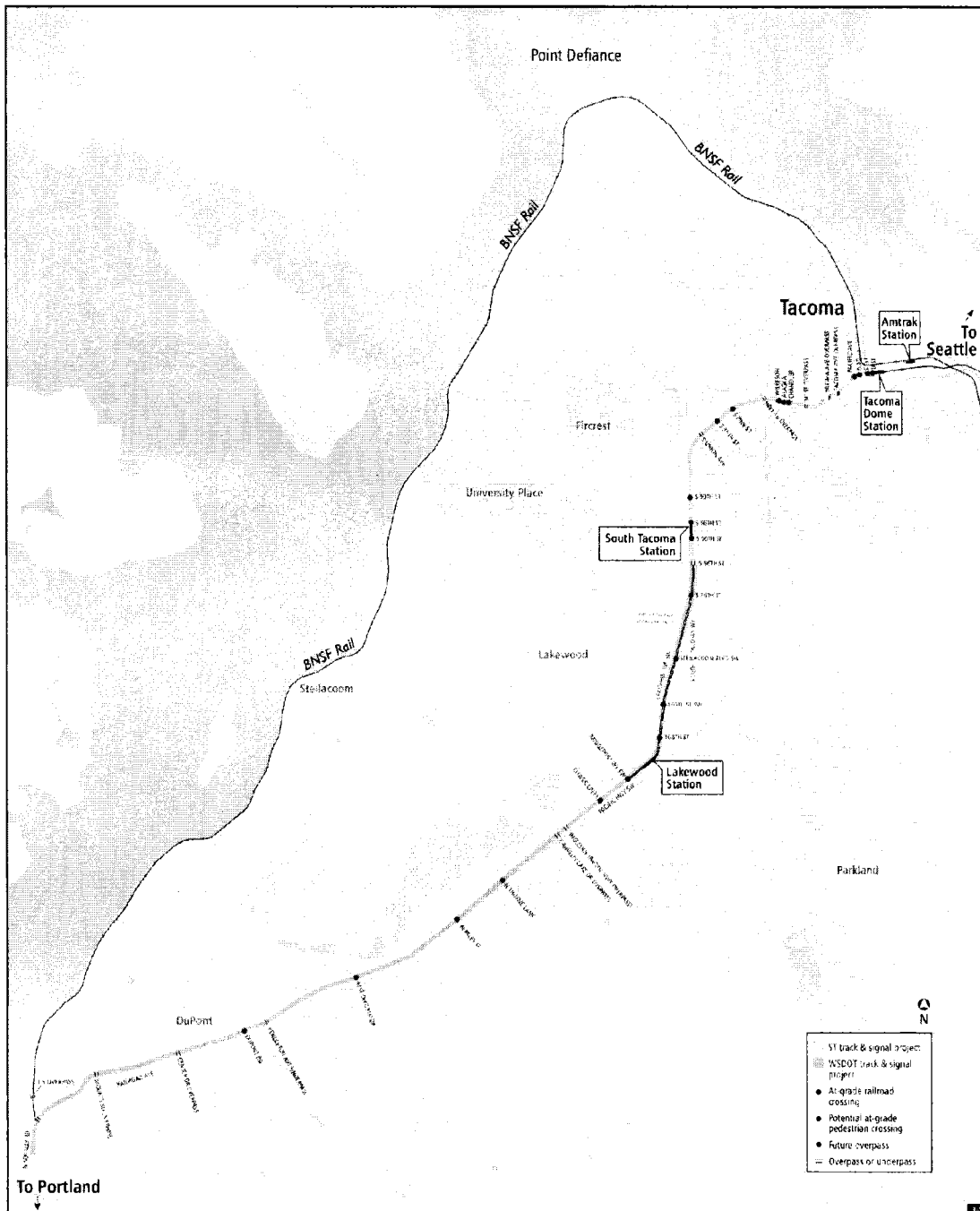
Date: \_\_\_\_\_

Souder Commuter Rail Corridor





**TACOMA TO NISQUALLY RAIL CORRIDOR**

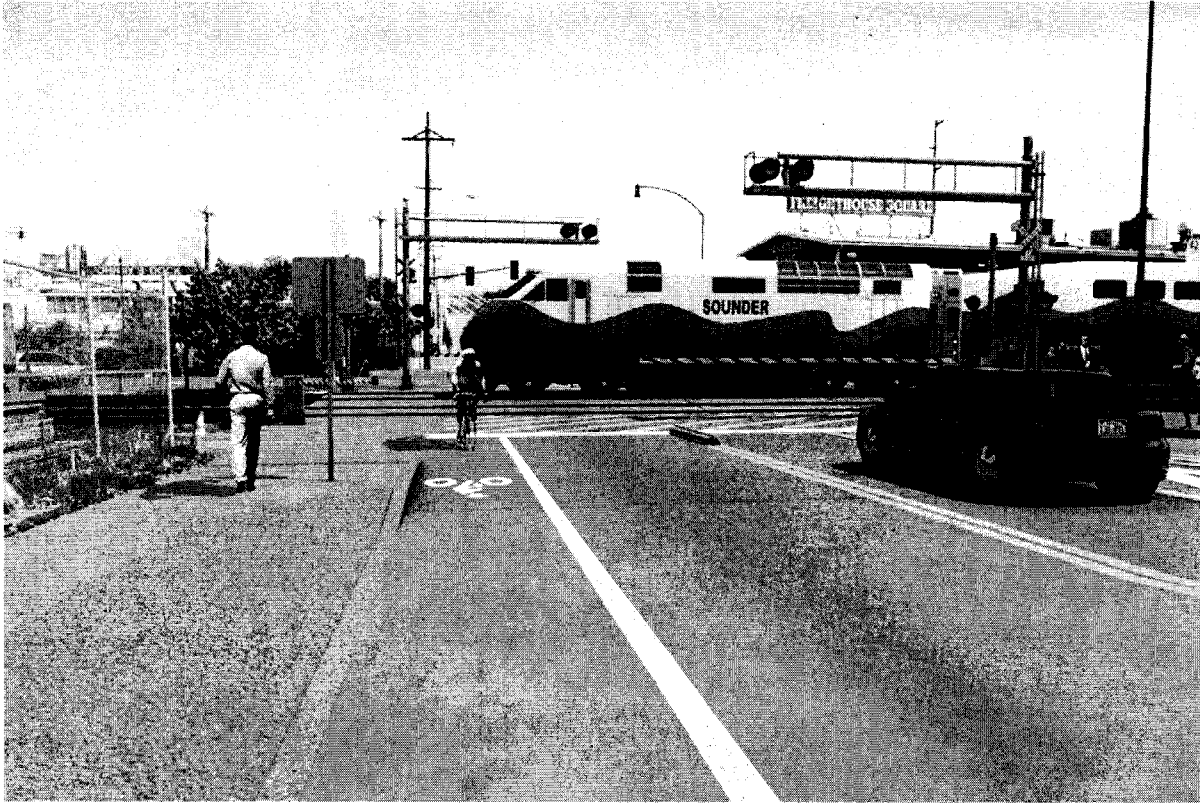


GCPF Application Form – Open Call for Projects

Photos and Renderings of Sound Transit's Commuter Rail Extension of Service from Tacoma to Lakewood



*Existing Grade Crossing in downtown Tacoma at Freighthouse Square and E D Street*



*New Sounder Commuter Rail Service: Extension from Tacoma to Lakewood (Revenue Service in late 2012) Grade Crossing in downtown Tacoma at Freighthouse Square and E D Street*



*New Sounder Commuter Rail Service: Extension from Tacoma to Lakewood (Revenue Service in late 2012)*