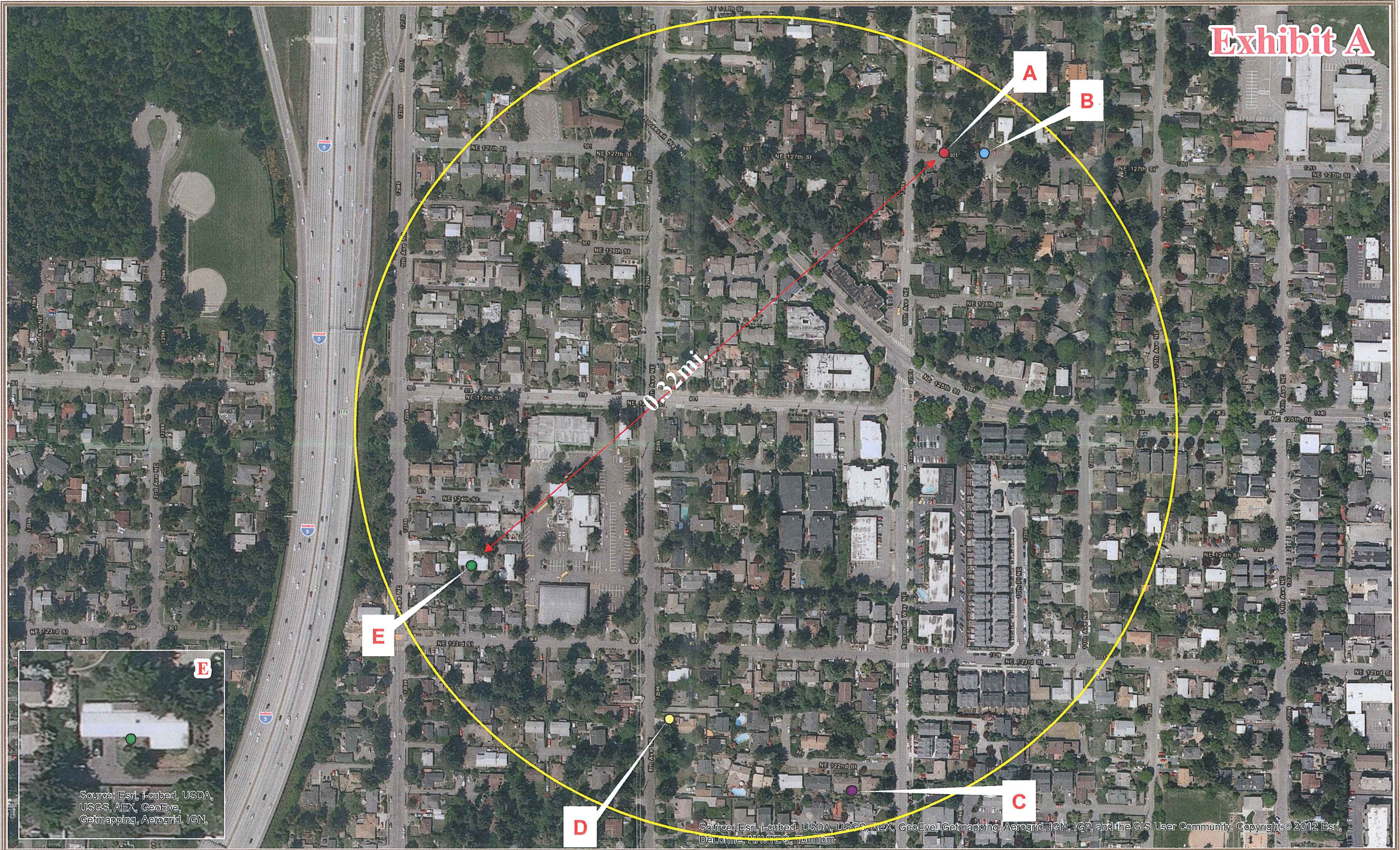


EXHIBIT A
Pinehurst Neighborhood Map

Exhibit A

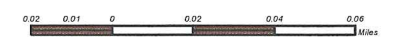


Source: Esri, I-cubed, USDA, USGS, AEX, GeoEye, Getmapping, Aerogrid, IGN,

Source: Esri, I-cubed, USDA, USGS, AEX, GeoEye, Getmapping, Aerogrid, IGN, IGP, and the GIS User Community. Copyright © 2012 Esri, DeLorme, NAVTEQ, TomTom



Scale = 1:3,000



A ● 1010 NE 127th St
(Broken Power Line Location)

B ● 1016 NE 127th St
(Gas pipe crossing abandoned water pipe)

C ● 913 NE 122nd St
(Gas pipe crossing copper water pipe)

D ● 12040 8th Ave NE
(Gas pipe crossing oil vent pipe)

E ● 12312 5th Ave NE
(Incident Site - Gas pipe crossing sewer pipe)



Natural Gas Incident 2011

Seattle, King County

Sheet Identifier
Map I of II
-2011 Incident-

Pinehurst Neighborhood

Date: 2012/12/19

Note: No representation or warranty is made concerning the accuracy, currency, completeness or quality of the data on this map.