

The Climate Trust

The Climate Trust has been promoting climate change solutions by purchasing high quality greenhouse gas (GHG) offsets from projects and advancing sound offset policy since 1998. The Climate Trust was created under the first regulation of GHG emissions in the United States, the Oregon Carbon Dioxide Standard, which was enacted in Oregon in 1997. This standard requires that new power plants above a certain size mitigate a percentage of their carbon dioxide emissions. Under the law, power plant project developers can achieve GHG emissions reductions in three different ways: 1) onsite emissions reductions, 2) funding a third party to provide offset projects, or 3) through payment to a qualified non-profit (e.g., The Climate Trust) to procure GHG offsets on the regulated entities' behalf.

Under the Oregon Carbon Dioxide Standard, The Climate Trust has funded a wide range of projects including: low-income home weatherization, new green building construction, materials substitution, renewable energy development, transportation and industrial efficiency, cogeneration and forest sequestration. The Climate Trust is the only state-sanctioned provider of offsets in the U.S. and has been acquiring regulatory-grade offsets since 1999. As of the beginning of 2007, The Climate Trust holds a portfolio of 17 diverse projects valued at \$9 million, making it one of the largest institutional purchaser's of offsets in the U.S. The Climate Trust is also an active participant in the greenhouse gas offset policy arena, as an advocate for greenhouse gas offset quality.

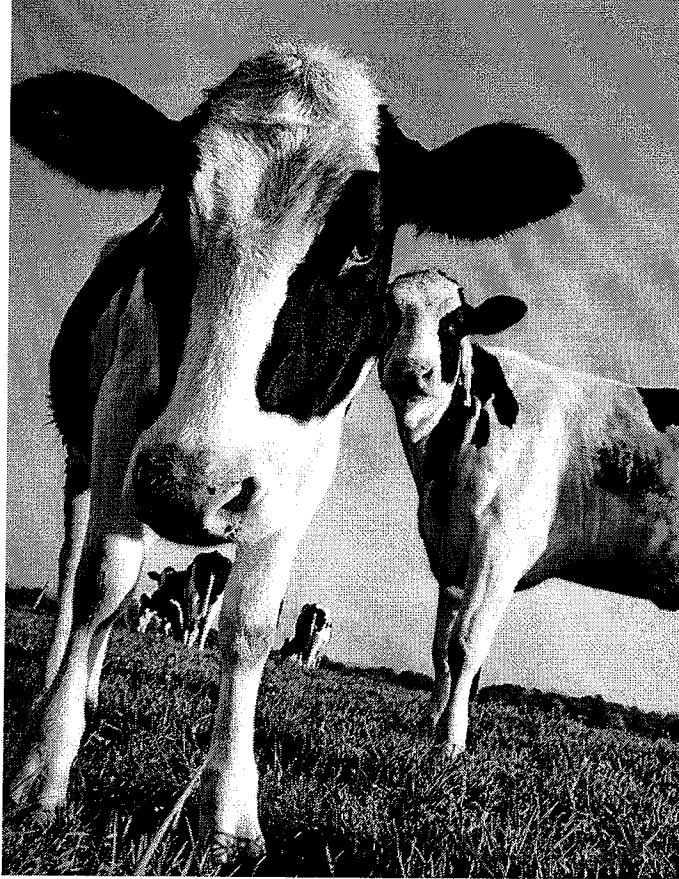
In December 2006, a report commissioned by Clean Air-Cool Planet, entitled *A Consumer's Guide to Retail Carbon Offset Providers*, was released and included an evaluation of several prominent retail providers of GHG offsets. The report evaluated and ranked 30 organizations on a range of criteria in an attempt to determine the quality and environmental integrity of the offsets sold into the voluntary market. Of the 30 organizations that were ranked on a scale of 1-10, only eight received a cumulative score greater than five: AgCert/Driving Green, Atmosfair, CarbonNeutral Company, Climate Care, The Climate Trust, co2balance, NativeEnergy and Sustainable Travel/ MyClimate. Of these eight companies, only two, The Climate Trust and NativeEnergy, are based in the United States.¹

This report illustrates that the greenhouse gas offset market is a maturing market and, as with many markets in their formative years, is experiencing growing pains. However, The Climate Trust has established itself as an industry leader and has demonstrated the environmental and economic effectiveness of offsets when properly executed and implemented.

¹ Clean Air-Cool Planet. *A Consumer's Guide to Retail Carbon Offset Providers*. December 2006. <http://www.cleanair-coolplanet.org/ConsumersGuidetoCarbonOffsets.pdf>.

HOW CAN YOU REDUCE YOUR
CARBON FOOTPRINT WITH
cow manure?

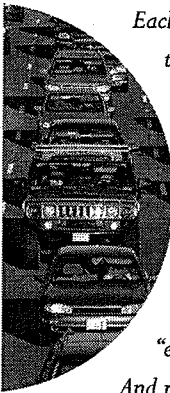
INTRODUCING SMART ENERGY FROM NW NATURAL



SMART ENERGY™
Thinking Beyond Tomorrow.


NW Natural®

TOGETHER *we can* SHAPE the FUTURE of our ENVIRONMENT.



Each of us is responsible for carbon dioxide entering the atmosphere — 20 tons, in fact, for the average person during one year. From the cars we drive to the lights in our homes to the heat in our buildings, our everyday lives depend on the creation of carbon dioxide and other greenhouse gases.

While there's no way to avoid these impacts completely, we can take steps to reduce our "environmental footprint" by using energy efficiently.

And now, there's another simple way for you to reduce a portion of the greenhouse gases caused by your energy use: Smart Energy™ from NW Natural.



How does it work?

NW Natural has partnered with The Climate Trust, a Portland-based non-profit focused on reducing greenhouse gas emissions, to provide customers the opportunity to offset the carbon dioxide emissions from their energy use for as little as \$6 a month. The Climate Trust will invest Smart Energy funds in clean energy projects right here in the West.

In exchange for their contribution, Smart Energy participants will get "carbon offsets" — or credit for greenhouse gases removed from the atmosphere.

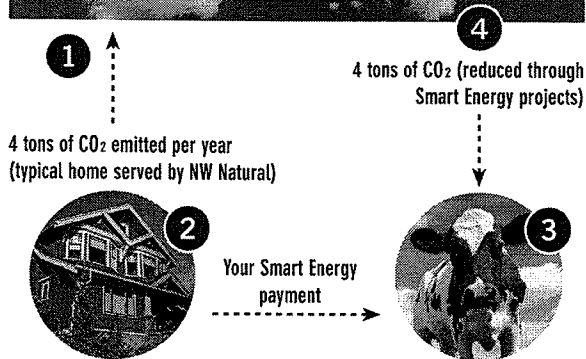
While many types of projects can provide positive environmental benefits, NW Natural will focus on biogas, which has great potential to significantly reduce greenhouse gas emissions.

What's so great about biogas?

Hold your breath! A typical cow produces 120 pounds of waste each day. That's a lot of potential energy — and a lot of greenhouse gases when left untreated. Methane from manure is a 23 times more potent greenhouse gas than carbon dioxide.

Today, the technology needed to turn cow waste into biogas is still in its infancy, but with contributions from Smart Energy participants, biogas could become a viable renewable energy source for our region.

MAKE YOUR NATURAL GAS USE "CLIMATE NEUTRAL" WITH SMART ENERGY



1. The natural gas you use emits some carbon dioxide (a greenhouse gas) into the atmosphere.
2. By signing up for Smart Energy, you can contribute a separate amount each month on your gas bill to offset the emissions from your home's natural gas use.
3. Your monthly payment will be invested in the development of biogas or other clean energy projects aimed at removing an equal amount of CO₂ from the atmosphere — making Smart Energy customers' gas use climate neutral.
4. Reducing our emissions will help us combat climate change.



ENROLLMENT FORM

Yes, I want to neutralize the carbon emissions from my natural gas use while supporting the development of biogas and other clean energy innovations in our region.

Select your option and fill out the form below

CLIMATE NEUTRAL OPTION — For \$0.1049 per therm offset all the carbon emissions of my home's natural gas use (total monthly charge will vary depending on actual gas usage).

AVERAGE OPTION — For \$6 a month offset all the carbon emissions of the average natural gas home (4 tons annually).

Name _____
(as it appears on your NW Natural bill)

NW Natural Account Number _____

Address _____ Apt. No. _____

City _____ State _____ Zip _____

Telephone _____

E-mail _____

Signature _____

Return this form in the envelope provided with your bill.

You can also sign up online at nwnatural.com/smart or by calling 800-422-4012.

If offset costs rise over time above the price built into the Smart Energy program, we will not adjust the participation fee, but the amount of offsets purchased could decrease.

SMART ENERGY QUESTIONS? VISIT NWNATURAL.COM/SMART.

CLIMATE CHANGE CHALLENGE

NW Natural believes the scientific evidence linking greenhouse gas emissions and climate change is convincing and requires immediate action. The concentration of carbon dioxide — a key greenhouse gas — in the atmosphere has increased 35 percent since industrialization, which most in the scientific community believe is causing global temperatures to rise.

While natural gas is the cleanest burning fossil fuel, NW Natural believes we all must participate in finding ways to tackle the global warming challenge. Along with using energy as efficiently as possible, we think participating in Smart Energy is a step in the right direction. We invite you to join us.

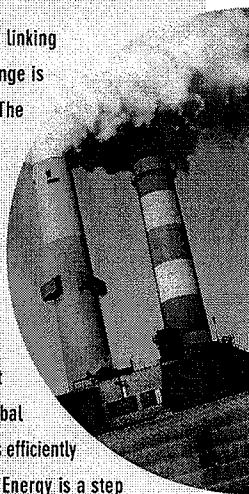
WE WOULDN'T ASK YOU TO DO SOMETHING WE AREN'T DOING

NW Natural is offsetting the emissions from the natural gas used to heat our facilities for the next five years, resulting in the removal of more than 4,200 tons of carbon dioxide. With additional contributions from customers like you, together we can eliminate millions of pounds of carbon dioxide emissions.

GETTING THE MOST FROM YOUR ENERGY DOLLAR

We believe Smart Energy will help our state meet its ambitious greenhouse gas emission reduction goals. But we also believe that nothing can serve as a substitute for the wise use of energy through efficient appliances and conservation. Find energy-saving tips and details about incentives for high-efficiency equipment at nwnatural.com or energytrust.org.

For more on Smart Energy call 800.422.4012
or visit nwnatural.com/smart



About The Climate Trust

To implement Smart Energy, NW Natural partnered with The Climate Trust, a Portland-based non-profit created to develop high-quality offset projects that reduce greenhouse gas emissions.

In 1997, Oregon became the first state in the nation to create a carbon emission standard. The Climate Trust was founded to supply offsets using the guidelines of the new law. Since its founding, The Climate Trust has invested \$9 million in projects that are expected to offset 2.6 million metric tons of carbon dioxide, and has been recognized as one of the leading providers of high quality offsets in the United States. Learn more about The Climate Trust at climatetrust.org.

Smart Energy investments

NW Natural will not profit from Smart Energy. Nearly 70 percent of all Smart Energy contributions will be used by The Climate Trust to fund offset projects including project identification, development, monitoring, and operational support. The remaining 30 percent will be used for overall program administration and to educate Oregonians about Smart Energy and climate change issues.

Smart Energy commitments

When biogas or other clean energy projects are launched, you'll receive carbon offsets equal to the amount of carbon dioxide associated with your gas use from the time you signed up for the program. Each year, NW Natural will send you a report on Smart Energy investments and the resulting carbon offsets.

SMART ENERGY
Thinking Beyond Tomorrow.



NW Natural

We grew up here.

[NWN HOME](#)[YOUR ACCOUNT](#)[YOUR HOME](#)[YOUR BUSINESS](#)[SAFETY](#)[BENEFITS OF GAS](#)[About Us](#)[Careers](#)[Investors](#)[Contact Us](#)[SIGN IN](#)

YOUR ACCOUNT

Account Information

- Account Summary
- Billing History
- Average Daily Usage Graph
- Change Mailing Address or Phone Number
- Submit Meter Read
- Automated Meter Reading
- Oregon WARM Billing Method
- Smart Energy
 - About Smart Energy
 - Smart Energy Q&A
 - About Greenhouse Gases
 - About Carbon Offsets
 - About BioGas
 - The Climate Trust
 - Enroll in Smart Energy

Your Bill

[Pay Your Bill](#)[Select Payment Plan](#)[Bill Payment Assistance](#)

[Home](#) > [YOUR ACCOUNT](#) > [Smart Energy](#)

About Smart Energy

[How does Smart Energy work?](#)

[NW Natural's commitment](#)

[Sign up](#)

Smart Energy: Working together to fight climate change

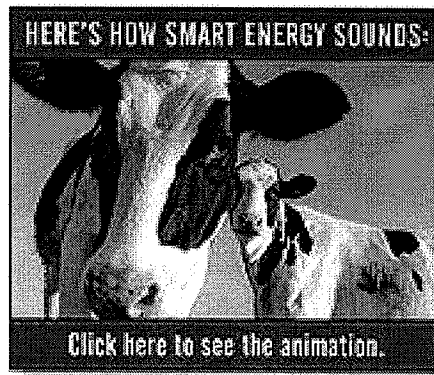
The scientific jury is in and here's the verdict:

We have to act together now to limit our effect on the world's climate. Climate change is real, but by reducing our greenhouse gas emissions we can make a difference.

Each of us is responsible for carbon dioxide entering the atmosphere - 20 tons a year, in fact, for the average person. From the cars we drive to the lights in our homes to the heat in our buildings, our everyday lives contribute to the creation of carbon dioxide and other greenhouse gases.

While there's no way to avoid these impacts completely, we can take steps to reduce our "environmental footprint" by using less energy and offsetting emissions from the rest.

Reduce energy use. There are simple ways you can reduce your home's energy use, ranging from weatherization measures to upgrading to more efficient equipment. Visit the [Energy Trust of Oregon](#) for information and incentives that will help reduce your home's energy use and greenhouse gas emissions.



E-mail

Password

- ▶ [Forgot Password?](#)
- ▶ [Having trouble? Help](#)
- ▶ [New to our site? Register Now](#)

AT YOUR SERVICE

- [Account Summary](#)
- [Pay Your Bill](#)
- [View Your Bill](#)
- [Start Service](#)
- [Move Service](#)
- [Go Paperless](#)
- [Payment Locations](#)
- [Equipment Repair](#)

Special Offers

- [For Your Home](#)
- [For Your Business](#)

