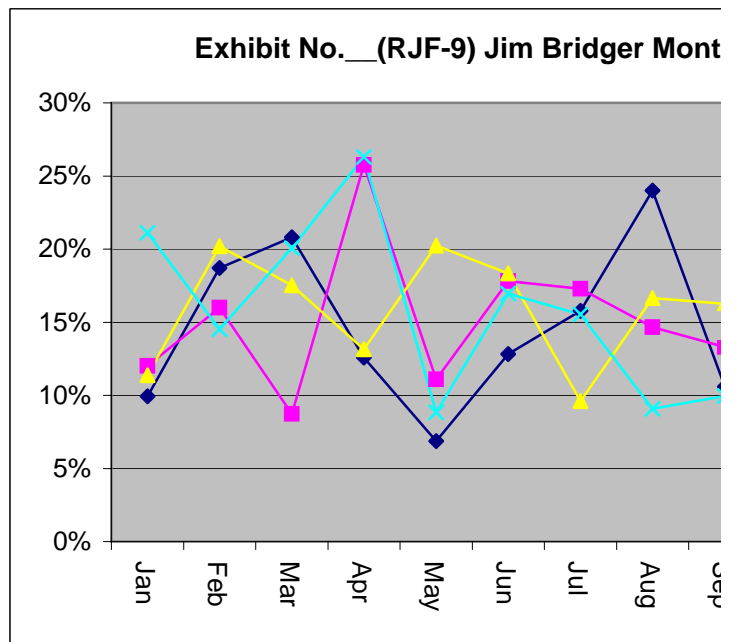
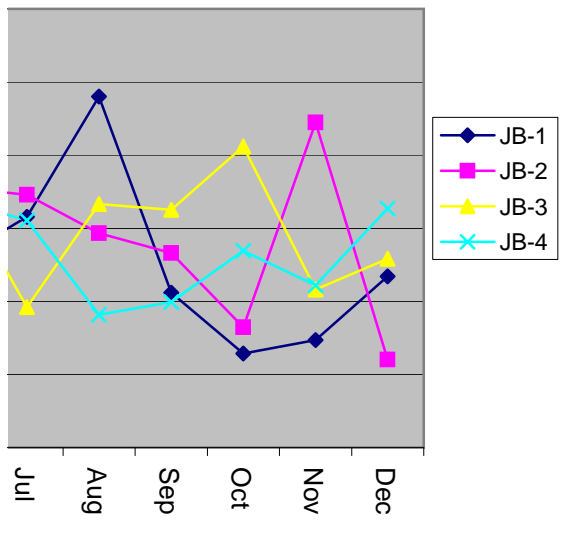


Average of Weekday		Unit ID					
Month		JB-1	JB-2	JB-3	JB-4	Grand Total	
	Jan	9.94%	12.01%	11.37%	21.13%	13.61%	Jan
	Feb	18.72%	16.00%	20.20%	14.53%	17.36%	Feb
	Mar	20.81%	8.72%	17.54%	20.07%	16.79%	Mar
	Apr	12.57%	25.76%	13.14%	26.30%	19.45%	Apr
	May	6.88%	11.10%	20.24%	8.83%	11.76%	May
	Jun	12.82%	17.80%	18.34%	16.95%	16.48%	Jun
	Jul	15.77%	17.28%	9.61%	15.54%	14.55%	Jul
	Aug	24.00%	14.67%	16.65%	9.08%	16.10%	Aug
	Sep	10.59%	13.31%	16.25%	9.95%	12.53%	Sep
	Oct	6.43%	8.22%	20.59%	13.45%	12.17%	Oct
	Nov	7.36%	22.23%	10.81%	11.09%	12.87%	Nov
	Dec	11.70%	6.01%	12.91%	16.34%	11.74%	Dec
Grand Total		13.13%	14.43%	15.64%	15.27%	14.62%	



JB-1	JB-2	JB-3	JB-4
9.94%	12.01%	11.37%	21.13%
18.72%	16.00%	20.20%	14.53%
20.81%	8.72%	17.54%	20.07%
12.57%	25.76%	13.14%	26.30%
6.88%	11.10%	20.24%	8.83%
12.82%	17.80%	18.34%	16.95%
15.77%	17.28%	9.61%	15.54%
24.00%	14.67%	16.65%	9.08%
10.59%	13.31%	16.25%	9.95%
6.43%	8.22%	20.59%	13.45%
7.36%	22.23%	10.81%	11.09%
11.70%	6.01%	12.91%	16.34%
100%	2%	7%	9%

ridger Monthly Outage Rates



**Analysis of on and off peak periods during weekends and weekdays
For the 48 months ending March 2006**

Month	Unit ID	Period	Total Lost MWh	Total Poss. MWh	Total Planned & RS MWh	Total		Average % derate	With Ramploss			
						Scheduled MWh	Average % derate		Weekday	Weekend	Ramploss Lost MWh	Total Scheduled MWh
Jan	BLN-1	Weekday	4,024.866	48,576.000	0.000	48,576.000	0.0829	0.0829		0.0	68,448.00	
Feb	BLN-1	Weekday	2,613.181	44,160.000	116.150	44,043.850	0.0593	0.0593		0.0	62,259.85	
Mar	BLN-1	Weekday	1,576.431	49,680.000	0.000	49,680.000	0.0317	0.0317		0.0	68,448.00	
Apr	BLN-1	Weekday	1,679.100	48,024.000	726.033	47,297.967	0.0355	0.0356		6.0	64,317.97	
May	BLN-1	Weekday	1,414.315	48,576.000	0.000	48,576.000	0.0291	0.0294		21.9	68,448.00	
Jun	BLN-1	Weekday	2,362.982	46,920.000	0.000	46,920.000	0.0504	0.0508		30.0	66,240.00	
Jul	BLN-1	Weekday	2,026.914	49,128.000	0.000	49,128.000	0.0413	0.0415		15.0	68,448.00	
Aug	BLN-1	Weekday	4,679.667	48,576.000	52.509	48,523.491	0.0964	0.0966		10.0	68,395.49	
Sep	BLN-1	Weekday	1,036.524	48,024.000	2,268.567	45,755.433	0.0227	0.0227		0.0	63,427.87	
Oct	BLN-1	Weekday	1,315.349	36,984.000	1,621.500	35,362.500	0.0372	0.0378		29.0	49,619.05	
Nov	BLN-1	Weekday	993.132	46,920.000	0.000	46,920.000	0.0212	0.0212		0.0	66,240.00	
Dec	BLN-1	Weekday	2,386.617	49,680.000	0.000	49,680.000	0.0480	0.0481		7.0	68,448.00	
Jan	CHO-4	Weekday	62,610.566	802,560.000	0.000	802,560.000	0.0780	0.0795	1733.0		1,130,880.00	
Feb	CHO-4	Weekday	39,382.617	729,600.000	0.000	729,600.000	0.0540	0.0562	2252.7		1,030,560.00	
Mar	CHO-4	Weekday	20,024.984	820,800.000	45,600.000	775,200.000	0.0258	0.0271	1359.0		1,065,691.00	
Apr	CHO-4	Weekday	74,843.699	793,440.000	182,482.333	610,957.667	0.1225	0.1234	724.0		837,437.67	
May	CHO-4	Weekday	171,420.282	802,560.000	32,958.667	769,601.333	0.2227	0.2258	3269.2		1,079,681.33	
Jun	CHO-4	Weekday	54,587.550	775,200.000	0.000	775,200.000	0.0704	0.0765	6664.0		1,094,400.00	
Jul	CHO-4	Weekday	51,230.083	811,680.000	0.000	811,680.000	0.0631	0.0666	3899.8		1,130,880.00	
Aug	CHO-4	Weekday	23,979.850	802,560.000	0.000	802,560.000	0.0299	0.0343	5038.0		1,130,880.00	
Sep	CHO-4	Weekday	84,138.784	793,440.000	0.000	793,440.000	0.1060	0.1078	1912.0		1,094,400.00	
Oct	CHO-4	Weekday	143,344.183	611,040.000	0.000	611,040.000	0.2346	0.2373	2318.0		849,300.00	
Nov	CHO-4	Weekday	35,091.717	775,200.000	0.000	775,200.000	0.0453	0.0464	1284.0		1,094,400.00	
Dec	CHO-4	Weekday	31,171.964	820,800.000	0.000	820,800.000	0.0380	0.0396	1871.0		1,130,880.00	
Jan	COL-3	Weekday	209,311.430	1,562,880.000	0.000	1,562,880.000	0.1339	0.1339	0.0		2,202,240.00	
Feb	COL-3	Weekday	114,832.499	1,420,800.000	0.000	1,420,800.000	0.0808	0.0808	0.0		2,006,880.00	
Mar	COL-3	Weekday	186,449.216	1,598,400.000	0.000	1,598,400.000	0.1166	0.1166	0.0		2,202,240.00	
Apr	COL-3	Weekday	113,703.581	1,545,120.000	267,004.333	1,278,115.667	0.0890	0.0890	0.0		1,754,675.67	
May	COL-3	Weekday	45,879.850	1,562,880.000	372,960.000	1,189,920.000	0.0386	0.0386	0.0		1,651,680.00	
Jun	COL-3	Weekday	433,460.335	1,509,600.000	47,014.667	1,462,585.333	0.2964	0.2964	0.0		2,084,185.33	
Jul	COL-3	Weekday	435,172.983	1,580,640.000	0.000	1,580,640.000	0.2753	0.2753	0.0		2,202,240.00	
Aug	COL-3	Weekday	191,398.087	1,562,880.000	0.000	1,562,880.000	0.1225	0.1225	0.0		2,202,240.00	
Sep	COL-3	Weekday	112,919.066	1,545,120.000	0.000	1,545,120.000	0.0731	0.0731	0.0		2,131,200.00	
Oct	COL-3	Weekday	37,518.383	1,189,920.000	0.000	1,189,920.000	0.0315	0.0315	0.0		1,653,900.00	
Nov	COL-3	Weekday	157,289.616	1,509,600.000	0.000	1,509,600.000	0.1042	0.1042	0.0		2,131,200.00	
Dec	COL-3	Weekday	440,481.566	1,598,400.000	0.000	1,598,400.000	0.2756	0.2756	0.0		2,202,240.00	
Jan	COL-4	Weekday	38,634.984	1,562,880.000	0.000	1,562,880.000	0.0247	0.0247	0.0		2,202,240.00	
Feb	COL-4	Weekday	104,889.949	1,420,800.000	505.420	1,420,294.580	0.0739	0.0739	0.0		2,006,374.58	
Mar	COL-4	Weekday	29,488.732	1,598,400.000	107,300.000	1,491,100.000	0.0198	0.0198	0.0		2,202,900.00	
Apr	COL-4	Weekday	90,404.651	1,545,120.000	390,720.000	1,154,400.000	0.0783	0.0783	0.0		1,596,180.00	
May	COL-4	Weekday	34,167.049	1,562,880.000	213,120.000	1,349,760.000	0.0253	0.0253	0.0		1,911,420.00	
Jun	COL-4	Weekday	175,656.748	1,509,600.000	0.000	1,509,600.000	0.1164	0.1164	0.0		2,131,200.00	
Jul	COL-4	Weekday	169,169.099	1,580,640.000	0.000	1,580,640.000	0.1070	0.1070	0.0		2,202,240.00	
Aug	COL-4	Weekday	58,424.185	1,562,880.000	0.000	1,562,880.000	0.0374	0.0374	0.0		2,202,240.00	
Sep	COL-4	Weekday	143,064.465	1,545,120.000	0.000	1,545,120.000	0.0926	0.0926	0.0		2,131,200.00	
Oct	COL-4	Weekday	93,112.950	1,189,920.000	0.000	1,189,920.000	0.0783	0.0783	0.0		1,653,900.00	
Nov	COL-4	Weekday	254,959.733	1,509,600.000	0.000	1,509,600.000	0.1689	0.1689	0.0		2,131,200.00	

**Analysis of on and off peak periods during weekends and weekdays
For the 48 months ending March 2006**

Month	Unit ID	Period	Total				Average % derate
			Total Lost MWh	Total Poss. MWh	Total Planned & RS MWh	Scheduled MWh	
Dec	COL-4	Weekday	51,157.600	1,598,400.000	0.000	1,598,400.000	0.0320
Jan	CRB-1	Weekday	36,811.418	141,504.000	0.000	141,504.000	0.2601
Feb	CRB-1	Weekday	10,688.669	128,640.000	0.000	128,640.000	0.0831
Mar	CRB-1	Weekday	11,981.629	144,720.000	0.000	144,720.000	0.0828
Apr	CRB-1	Weekday	4,325.934	141,480.000	0.000	141,480.000	0.0306
May	CRB-1	Weekday	3,151.049	143,160.000	0.000	143,160.000	0.0220
Jun	CRB-1	Weekday	7,503.616	138,120.000	0.000	138,120.000	0.0543
Jul	CRB-1	Weekday	3,647.483	144,768.000	1,705.690	143,062.310	0.0255
Aug	CRB-1	Weekday	7,284.468	143,088.000	0.000	143,088.000	0.0509
Sep	CRB-1	Weekday	11,738.327	141,408.000	7,559.983	133,848.017	0.0877
Oct	CRB-1	Weekday	6,936.499	107,736.000	16,079.760	91,656.240	0.0757
Nov	CRB-1	Weekday	5,949.716	136,680.000	35,375.767	101,304.233	0.0587
Dec	CRB-1	Weekday	42,452.363	144,720.000	4,824.000	139,896.000	0.3035
Jan	CRB-2	Weekday	14,645.083	221,760.000	0.000	221,760.000	0.0660
Feb	CRB-2	Weekday	12,565.217	201,600.000	0.000	201,600.000	0.0623
Mar	CRB-2	Weekday	2,869.583	226,800.000	12,600.000	214,200.000	0.0134
Apr	CRB-2	Weekday	5,092.584	219,240.000	25,200.000	194,040.000	0.0262
May	CRB-2	Weekday	752.250	221,760.000	50,400.000	171,360.000	0.0044
Jun	CRB-2	Weekday	7,956.252	214,200.000	0.000	214,200.000	0.0371
Jul	CRB-2	Weekday	3,653.882	224,280.000	0.000	224,280.000	0.0163
Aug	CRB-2	Weekday	21,237.885	221,760.000	3,053.715	218,706.285	0.0971
Sep	CRB-2	Weekday	24,953.401	219,240.000	0.000	219,240.000	0.1138
Oct	CRB-2	Weekday	16,573.249	168,840.000	0.000	168,840.000	0.0982
Nov	CRB-2	Weekday	10,394.383	214,200.000	0.000	214,200.000	0.0485
Dec	CRB-2	Weekday	17,120.783	226,800.000	0.000	226,800.000	0.0755
Jan	CRG-1	Weekday	91,612.616	903,936.000	0.000	903,936.000	0.1013
Feb	CRG-1	Weekday	236,544.267	821,760.000	0.000	821,760.000	0.2879
Mar	CRG-1	Weekday	80,816.634	924,480.000	0.000	924,480.000	0.0874
Apr	CRG-1	Weekday	51,451.982	893,664.000	53,749.667	839,914.333	0.0613
May	CRG-1	Weekday	13,844.049	903,936.000	0.000	903,936.000	0.0153
Jun	CRG-1	Weekday	11,912.267	873,120.000	0.000	873,120.000	0.0136
Jul	CRG-1	Weekday	15,348.416	914,208.000	0.000	914,208.000	0.0168
Aug	CRG-1	Weekday	22,492.433	903,936.000	0.000	903,936.000	0.0249
Sep	CRG-1	Weekday	49,912.117	893,664.000	123,264.000	770,400.000	0.0648
Oct	CRG-1	Weekday	33,783.934	688,224.000	227,974.200	460,249.800	0.0734
Nov	CRG-1	Weekday	57,518.664	873,120.000	0.000	873,120.000	0.0659
Dec	CRG-1	Weekday	47,553.768	924,480.000	0.000	924,480.000	0.0514
Jan	CRG-2	Weekday	46,695.383	903,936.000	0.000	903,936.000	0.0517
Feb	CRG-2	Weekday	47,270.917	821,760.000	0.000	821,760.000	0.0575
Mar	CRG-2	Weekday	31,181.533	924,480.000	133,536.000	790,944.000	0.0394
Apr	CRG-2	Weekday	5,847.899	893,664.000	257,841.467	635,822.533	0.0092
May	CRG-2	Weekday	9,909.000	903,936.000	0.000	903,936.000	0.0110
Jun	CRG-2	Weekday	111,855.466	873,120.000	0.000	873,120.000	0.1281
Jul	CRG-2	Weekday	16,098.901	914,208.000	0.000	914,208.000	0.0176
Aug	CRG-2	Weekday	8,406.899	903,936.000	0.000	903,936.000	0.0093
Sep	CRG-2	Weekday	30,473.384	893,664.000	0.000	893,664.000	0.0341
Oct	CRG-2	Weekday	12,756.100	688,224.000	0.000	688,224.000	0.0185

With Ramploss

Weekday	Weekend	Ramploss Lost MWh	Total Scheduled MWh
0.0320		0.0	2,202,240.00
0.2617		310.0	199,392.00
0.0834		63.0	181,704.00
0.0835		143.5	199,392.00
0.0313		138.0	194,849.00
0.0238		364.0	201,624.00
0.0551		159.0	195,120.00
0.0267		240.0	199,918.31
0.0518		174.0	201,624.00
0.0897		373.0	182,006.68
0.0761		53.0	124,036.36
0.0591		50.0	144,720.28
0.3044		188.0	191,363.17
0.0674		411.0	312,480.00
0.0629		166.0	284,760.00
0.0143		256.0	295,876.00
0.0262		0.0	266,997.50
0.0064		487.8	239,659.00
0.0388		510.0	302,400.00
0.0177		442.0	312,429.29
0.0992		654.3	307,205.54
0.1148		310.0	302,400.00
0.1001		456.0	234,675.00
0.0503		522.3	302,400.00
0.0766		346.0	312,480.00
0.1013		0.0	1,273,728.00
0.2879		0.0	1,160,736.00
0.0874		0.0	1,273,728.00
0.0613		0.0	1,137,909.33
0.0153		0.0	1,273,728.00
0.0136		0.0	1,232,640.00
0.0168		0.0	1,273,728.00
0.0249		0.0	1,273,728.00
0.0648		0.0	1,048,685.60
0.0734		0.0	646,001.80
0.0659		0.0	1,232,640.00
0.0514		0.0	1,273,728.00
0.0517		0.0	1,273,728.00
0.0575		0.0	1,160,736.00
0.0394		0.0	1,079,251.93
0.0092		0.0	865,159.20
0.0110		0.0	1,273,728.00
0.1281		0.0	1,232,640.00
0.0176		0.0	1,273,728.00
0.0093		0.0	1,273,728.00
0.0341		0.0	1,232,640.00
0.0185		0.0	956,580.00

**Analysis of on and off peak periods during weekends and weekdays
For the 48 months ending March 2006**

Month	Unit ID	Period	Total				Average % derate
			Total Lost MWh	Total Poss. MWh	Total Planned & RS MWh	Scheduled MWh	
Nov	CRG-2	Weekday	2,931.882	873,120.000	0.000	873,120.000	0.0034
Dec	CRG-2	Weekday	4,654.000	924,480.000	0.000	924,480.000	0.0050
Jan	DJ-1	Weekday	12,228.050	223,872.000	0.000	223,872.000	0.0546
Feb	DJ-1	Weekday	2,451.650	203,520.000	0.000	203,520.000	0.0120
Mar	DJ-1	Weekday	7,346.800	228,960.000	0.000	228,960.000	0.0321
Apr	DJ-1	Weekday	10,634.667	221,328.000	0.000	221,328.000	0.0480
May	DJ-1	Weekday	11,005.167	223,872.000	14,854.134	209,017.866	0.0527
Jun	DJ-1	Weekday	26,973.549	216,240.000	18,456.367	197,783.633	0.1364
Jul	DJ-1	Weekday	19,634.916	226,416.000	0.000	226,416.000	0.0867
Aug	DJ-1	Weekday	12,163.434	223,872.000	0.000	223,872.000	0.0543
Sep	DJ-1	Weekday	11,818.034	221,328.000	5,088.000	216,240.000	0.0547
Oct	DJ-1	Weekday	14,846.215	170,448.000	48,563.901	121,884.099	0.1218
Nov	DJ-1	Weekday	1,695.667	216,240.000	0.000	216,240.000	0.0078
Dec	DJ-1	Weekday	3,170.000	228,960.000	0.000	228,960.000	0.0138
Jan	DJ-2	Weekday	7,846.900	223,872.000	0.000	223,872.000	0.0351
Feb	DJ-2	Weekday	5,061.867	203,520.000	0.000	203,520.000	0.0249
Mar	DJ-2	Weekday	8,645.900	228,960.000	8,845.700	220,114.300	0.0393
Apr	DJ-2	Weekday	10,753.734	221,328.000	15,456.566	205,871.434	0.0522
May	DJ-2	Weekday	7,306.434	223,872.000	0.000	223,872.000	0.0326
Jun	DJ-2	Weekday	13,772.967	216,240.000	0.000	216,240.000	0.0637
Jul	DJ-2	Weekday	13,059.150	226,416.000	0.000	226,416.000	0.0577
Aug	DJ-2	Weekday	11,949.250	223,872.000	0.000	223,872.000	0.0534
Sep	DJ-2	Weekday	10,600.283	221,328.000	0.000	221,328.000	0.0479
Oct	DJ-2	Weekday	17,774.166	170,448.000	0.000	170,448.000	0.1043
Nov	DJ-2	Weekday	3,873.000	216,240.000	0.000	216,240.000	0.0179
Dec	DJ-2	Weekday	8,387.667	228,960.000	0.000	228,960.000	0.0366
Jan	DJ-3	Weekday	27,461.017	464,640.000	0.000	464,640.000	0.0591
Feb	DJ-3	Weekday	14,641.216	422,400.000	0.000	422,400.000	0.0347
Mar	DJ-3	Weekday	110,744.850	475,200.000	0.000	475,200.000	0.2330
Apr	DJ-3	Weekday	52,212.484	459,360.000	0.000	459,360.000	0.1137
May	DJ-3	Weekday	75,242.333	464,640.000	116,160.000	348,480.000	0.2159
Jun	DJ-3	Weekday	24,686.000	448,800.000	24,156.000	424,644.000	0.0581
Jul	DJ-3	Weekday	46,186.501	469,920.000	0.000	469,920.000	0.0983
Aug	DJ-3	Weekday	58,816.388	464,640.000	0.000	464,640.000	0.1266
Sep	DJ-3	Weekday	22,952.917	459,360.000	0.000	459,360.000	0.0500
Oct	DJ-3	Weekday	15,128.134	353,760.000	0.000	353,760.000	0.0428
Nov	DJ-3	Weekday	12,091.300	448,800.000	0.000	448,800.000	0.0269
Dec	DJ-3	Weekday	21,828.300	475,200.000	0.000	475,200.000	0.0459
Jan	DJ-4	Weekday	78,629.883	696,960.000	0.000	696,960.000	0.1128
Feb	DJ-4	Weekday	54,269.018	633,600.000	0.000	633,600.000	0.0857
Mar	DJ-4	Weekday	84,014.966	712,800.000	47,520.000	665,280.000	0.1263
Apr	DJ-4	Weekday	23,611.500	689,040.000	293,617.500	395,422.500	0.0597
May	DJ-4	Weekday	69,170.583	696,960.000	55,440.000	641,520.000	0.1078
Jun	DJ-4	Weekday	105,228.765	673,200.000	0.000	673,200.000	0.1563
Jul	DJ-4	Weekday	142,712.633	704,880.000	0.000	704,880.000	0.2025
Aug	DJ-4	Weekday	93,719.883	696,960.000	0.000	696,960.000	0.1345
Sep	DJ-4	Weekday	52,312.966	689,040.000	0.000	689,040.000	0.0759

With Ramploss

Weekday	Weekend	Ramploss Lost MWh	Total Scheduled MWh
0.0034		0.0	1,232,640.00
0.0050		0.0	1,273,728.00
0.0562		494.0	315,456.00
0.0120		0.0	287,472.00
0.0325		132.0	315,456.00
0.0484		107.0	304,856.00
0.0531		130.0	295,513.87
0.1381		478.0	276,819.00
0.0873		174.0	315,456.00
0.0543		0.0	315,456.00
0.0547		22.0	295,128.73
0.1249		519.0	167,888.10
0.0078		0.0	305,280.00
0.0138		0.0	315,456.00
0.0353		87.0	315,456.00
0.0252		99.0	287,472.00
0.0401		246.0	306,610.30
0.0526		95.0	279,223.43
0.0329		88.0	315,456.00
0.0643		183.0	305,280.00
0.0581		142.0	315,456.00
0.0538		144.0	315,456.00
0.0479		0.0	305,280.00
0.1057		333.0	236,910.00
0.0179		0.0	305,280.00
0.0373		224.0	315,456.00
0.0607		1060.0	654,720.00
0.0351		268.0	596,640.00
0.2379		3147.0	654,720.00
0.1167		1907.0	628,180.67
0.2189		1441.0	491,040.00
0.0598		1004.0	598,884.00
0.0995		789.0	654,720.00
0.1291		1630.0	654,720.00
0.0514		914.0	633,600.00
0.0449		1067.0	491,700.00
0.0279		629.0	633,600.00
0.0488		1894.0	654,720.00
0.1144		1589.0	982,080.00
0.0886		2598.0	894,960.00
0.1288		2292.5	903,182.50
0.0618		1140.0	539,489.50
0.1097		1699.0	894,998.50
0.1625		5862.0	950,400.00
0.2051		2550.0	982,080.00
0.1372		2666.0	982,080.00
0.0771		1109.0	950,400.00

**Analysis of on and off peak periods during weekends and weekdays
For the 48 months ending March 2006**

Month	Unit ID	Period	Total Lost MWh	Total Poss. MWh	Total Planned & RS MWh	Total		Average % derate	With Ramploss		
						Scheduled MWh	Average % derate		Weekday	Weekend	Ramploss Lost MWh
Oct	DJ-4	Weekday	36,570.350	530,640.000	0.000	530,640.000	0.0689	0.0704		1078.0	737,550.00
Nov	DJ-4	Weekday	62,722.083	673,200.000	0.000	673,200.000	0.0932	0.0958		2519.0	950,400.00
Dec	DJ-4	Weekday	68,981.733	712,800.000	0.000	712,800.000	0.0968	0.0991		2249.5	982,080.00
Jan	GAD-1	Weekday	0.000	126,720.000	126,720.020	0.000	0.0000	0.0000		0.0	0.00
Feb	GAD-1	Weekday	0.000	115,200.000	115,200.000	0.000	0.0000	0.0000		0.0	0.00
Mar	GAD-1	Weekday	0.000	129,600.000	129,600.000	0.000	0.0000	0.0000		0.0	0.00
Apr	GAD-1	Weekday	0.000	125,280.000	114,741.900	10,538.100	0.0000	0.1273		1964.0	15,429.12
May	GAD-1	Weekday	2,293.000	126,720.000	110,290.080	16,429.920	0.1396	0.2409		2013.0	19,854.96
Jun	GAD-1	Weekday	16,760.000	122,400.000	92,394.960	30,005.040	0.5586	0.6205		2649.0	42,768.06
Jul	GAD-1	Weekday	580.000	128,160.000	88,685.940	39,474.060	0.0147	0.1365		6488.0	53,252.10
Aug	GAD-1	Weekday	2,265.000	126,720.000	95,256.360	31,463.640	0.0720	0.1895		4803.0	40,874.64
Sep	GAD-1	Weekday	252.000	125,280.000	101,398.020	23,881.980	0.0106	0.0745		2002.0	31,292.88
Oct	GAD-1	Weekday	303.501	96,480.000	80,739.900	15,740.100	0.0193	0.1059		1618.0	18,689.10
Nov	GAD-1	Weekday	0.000	122,400.000	120,343.020	2,056.980	0.0000	0.0765		274.0	3,579.96
Dec	GAD-1	Weekday	0.000	129,600.000	129,600.000	0.000	0.0000	0.0000		0.0	0.00
Jan	GAD-2	Weekday	0.000	158,400.000	158,400.000	0.000	0.0000	0.0000		0.0	0.00
Feb	GAD-2	Weekday	608.750	144,000.000	141,888.750	2,111.250	0.2883	0.3556		384.0	5,711.25
Mar	GAD-2	Weekday	0.000	162,000.000	158,506.275	3,493.725	0.0000	0.0000		0.0	3,493.73
Apr	GAD-2	Weekday	161.250	156,600.000	127,817.400	28,782.600	0.0056	0.0978		3740.0	40,586.33
May	GAD-2	Weekday	0.000	158,400.000	129,812.625	28,587.375	0.0000	0.0989		3656.0	36,973.58
Jun	GAD-2	Weekday	15,728.750	153,000.000	119,616.225	33,383.775	0.4711	0.5593		4223.0	47,887.50
Jul	GAD-2	Weekday	245.000	160,200.000	91,920.075	68,279.925	0.0036	0.1079		9464.0	90,753.68
Aug	GAD-2	Weekday	1,929.817	158,400.000	107,801.250	50,598.750	0.0381	0.1315		6366.1	68,191.35
Sep	GAD-2	Weekday	908.750	156,600.000	124,673.625	31,926.375	0.0285	0.0787		2257.0	44,893.95
Oct	GAD-2	Weekday	2,087.500	120,600.000	95,964.975	24,635.025	0.0847	0.1562		2096.0	29,312.55
Nov	GAD-2	Weekday	0.000	153,000.000	150,103.800	2,896.200	0.0000	0.0601		301.0	5,010.00
Dec	GAD-2	Weekday	0.000	162,000.000	162,000.000	0.000	0.0000	0.0000		0.0	0.00
Jan	GAD-3	Weekday	0.000	211,200.000	211,200.000	0.000	0.0000	0.0000		0.0	0.00
Feb	GAD-3	Weekday	0.000	192,000.000	192,000.000	0.000	0.0000	0.0000		0.0	0.00
Mar	GAD-3	Weekday	200.000	216,000.000	195,174.900	20,825.100	0.0096	0.1230		2714.0	23,943.40
Apr	GAD-3	Weekday	5,205.000	208,800.000	146,383.300	62,416.700	0.0834	0.1247		3119.0	75,535.00
May	GAD-3	Weekday	243.333	211,200.000	157,260.000	53,940.000	0.0045	0.0458		2879.0	69,736.60
Jun	GAD-3	Weekday	283.334	204,000.000	141,161.500	62,838.500	0.0045	0.1209		10250.0	88,035.40
Jul	GAD-3	Weekday	805.001	213,600.000	91,939.700	121,660.300	0.0066	0.1017		15491.0	162,888.60
Aug	GAD-3	Weekday	4,873.185	211,200.000	108,835.400	102,364.600	0.0476	0.1398		12586.0	136,459.70
Sep	GAD-3	Weekday	0.000	208,800.000	146,931.500	61,868.500	0.0000	0.0581		4872.0	83,822.00
Oct	GAD-3	Weekday	9,193.335	160,800.000	103,961.600	56,838.400	0.1617	0.2122		3804.0	75,411.70
Nov	GAD-3	Weekday	0.000	204,000.000	197,226.700	6,773.300	0.0000	0.0480		501.0	10,444.90
Dec	GAD-3	Weekday	0.000	216,000.000	216,000.000	0.000	0.0000	0.0000		0.0	0.00
Jan	GAD-4	Weekday	913.332	84,480.000	59,134.240	25,345.760	0.0360	0.0360		0.0	33,572.48
Feb	GAD-4	Weekday	716.001	76,800.000	51,502.200	25,297.800	0.0283	0.0283		0.0	33,353.04
Mar	GAD-4	Weekday	92.001	86,400.000	63,428.720	22,971.280	0.0040	0.0040		0.0	27,989.96
Apr	GAD-4	Weekday	146.000	62,400.000	36,281.360	26,118.640	0.0056	0.0148		0.0	35,947.84
May	GAD-4	Weekday	98.999	62,400.000	36,329.840	26,070.160	0.0038	0.0135		0.0	35,436.88
Jun	GAD-4	Weekday	336.666	62,400.000	34,216.520	28,183.480	0.0119	0.0196		0.0	37,734.80
Jul	GAD-4	Weekday	1,892.749	63,360.000	26,239.360	37,120.640	0.0510	0.0489		0.0	51,107.32
Aug	GAD-4	Weekday	1,217.999	84,480.000	37,689.480	46,790.520	0.0260	0.0260		0.0	65,798.56

Analysis of on and off peak periods during weekends and weekdays
For the 48 months ending March 2006

Month	Unit ID	Period	Total Lost MWh	Total Poss. MWh	Total Planned & RS MWh	Total		Average % derate	With Ramploss			
						Scheduled MWh	Average % derate		Weekday	Weekend	Ramploss Lost MWh	Total Scheduled MWh
Sep	GAD-4	Weekday	7,355.333	83,520.000	42,945.400	40,574.600	0.1813	0.1813	0.0	55,202.68		
Oct	GAD-4	Weekday	526.666	64,320.000	31,737.960	32,582.040	0.0162	0.0162	0.0	43,672.72		
Nov	GAD-4	Weekday	5,106.666	81,600.000	59,807.960	21,792.040	0.2343	0.2343	0.0	29,501.32		
Dec	GAD-4	Weekday	3,827.997	86,400.000	59,450.800	26,949.200	0.1420	0.1420	0.0	34,223.24		
Jan	GAD-5	Weekday	980.000	84,480.000	60,691.880	23,788.120	0.0412	0.0412	0.0	31,257.48		
Feb	GAD-5	Weekday	640.666	76,800.000	52,314.640	24,485.360	0.0262	0.0262	0.0	32,131.32		
Mar	GAD-5	Weekday	0.000	86,400.000	65,967.960	20,432.040	0.0000	0.0000	0.0	24,096.12		
Apr	GAD-5	Weekday	170.000	62,400.000	37,830.720	24,569.280	0.0069	0.0158	0.0	33,165.24		
May	GAD-5	Weekday	155.667	62,400.000	38,207.800	24,192.200	0.0064	0.0155	0.0	33,328.16		
Jun	GAD-5	Weekday	1,296.666	62,400.000	36,381.840	26,018.160	0.0498	0.0480	0.0	34,852.24		
Jul	GAD-5	Weekday	1,849.750	63,360.000	27,900.040	35,459.960	0.0522	0.0498	0.0	48,759.32		
Aug	GAD-5	Weekday	3,115.333	84,480.000	36,459.400	48,020.600	0.0649	0.0649	0.0	66,590.68		
Sep	GAD-5	Weekday	5,385.334	83,520.000	47,362.720	36,157.280	0.1489	0.1489	0.0	50,203.28		
Oct	GAD-5	Weekday	9,161.331	64,320.000	30,070.000	34,250.000	0.2675	0.2675	0.0	45,774.68		
Nov	GAD-5	Weekday	16,785.333	81,600.000	54,762.560	26,837.440	0.6254	0.6254	0.0	36,884.16		
Dec	GAD-5	Weekday	817.332	86,400.000	61,574.000	24,826.000	0.0329	0.0329	0.0	30,594.80		
Jan	GAD-6	Weekday	372.000	84,480.000	63,528.680	20,951.320	0.0178	0.0178	0.0	27,572.67		
Feb	GAD-6	Weekday	451.334	76,800.000	54,689.480	22,110.520	0.0204	0.0204	0.0	28,996.52		
Mar	GAD-6	Weekday	0.000	86,400.000	67,780.440	18,619.560	0.0000	0.0000	0.0	21,442.92		
Apr	GAD-6	Weekday	65.333	62,400.000	40,501.240	21,898.760	0.0030	0.0129	0.0	29,640.08		
May	GAD-6	Weekday	967.600	62,400.000	40,845.906	21,554.094	0.0449	0.0443	0.0	31,279.57		
Jun	GAD-6	Weekday	328.000	62,400.000	37,401.360	24,998.640	0.0131	0.0205	0.0	33,468.00		
Jul	GAD-6	Weekday	8,786.166	63,360.000	25,379.440	37,980.560	0.2313	0.1841	0.0	53,111.88		
Aug	GAD-6	Weekday	1,586.667	84,480.000	40,677.560	43,802.440	0.0362	0.0362	0.0	62,158.32		
Sep	GAD-6	Weekday	16,402.666	83,520.000	44,492.000	39,028.000	0.4203	0.4203	0.0	52,242.00		
Oct	GAD-6	Weekday	2,574.666	64,320.000	34,100.600	30,219.400	0.0852	0.0852	0.0	38,452.12		
Nov	GAD-6	Weekday	1,313.334	81,600.000	64,080.000	17,520.000	0.0750	0.0750	0.0	23,888.60		
Dec	GAD-6	Weekday	719.334	86,400.000	65,326.000	21,074.000	0.0341	0.0341	0.0	26,218.00		
Jan	HDN-1	Weekday	23,501.817	388,608.000	0.000	388,608.000	0.0605	0.0605	0.0	547,584.00		
Feb	HDN-1	Weekday	3,518.884	353,280.000	0.000	353,280.000	0.0100	0.0100	0.0	499,008.00		
Mar	HDN-1	Weekday	23,359.183	397,440.000	0.000	397,440.000	0.0588	0.0588	0.0	547,584.00		
Apr	HDN-1	Weekday	17,133.951	384,192.000	39,652.000	344,540.000	0.0497	0.0497	0.0	471,868.00		
May	HDN-1	Weekday	6,798.033	388,608.000	97,152.000	291,456.000	0.0233	0.0233	0.0	410,688.00		
Jun	HDN-1	Weekday	13,706.400	375,360.000	7,268.000	368,092.000	0.0372	0.0372	0.0	518,236.00		
Jul	HDN-1	Weekday	26,725.765	393,024.000	0.000	393,024.000	0.0680	0.0680	0.0	547,584.00		
Aug	HDN-1	Weekday	24,173.500	388,608.000	0.000	388,608.000	0.0622	0.0622	0.0	547,584.00		
Sep	HDN-1	Weekday	10,342.599	384,192.000	0.000	384,192.000	0.0269	0.0269	0.0	529,920.00		
Oct	HDN-1	Weekday	23,156.997	295,872.000	0.000	295,872.000	0.0783	0.0783	0.0	411,240.00		
Nov	HDN-1	Weekday	32,578.898	375,360.000	0.000	375,360.000	0.0868	0.0868	0.0	529,920.00		
Dec	HDN-1	Weekday	27,121.600	397,440.000	0.000	397,440.000	0.0682	0.0682	0.0	547,584.00		
Jan	HDN-2	Weekday	9,868.667	553,344.000	0.000	553,344.000	0.0178	0.0178	0.0	779,712.00		
Feb	HDN-2	Weekday	1,541.100	503,040.000	0.000	503,040.000	0.0031	0.0031	0.0	710,544.00		
Mar	HDN-2	Weekday	230.000	565,920.000	0.000	565,920.000	0.0004	0.0004	0.0	779,712.00		
Apr	HDN-2	Weekday	19,249.417	547,056.000	31,440.000	515,616.000	0.0373	0.0373	0.0	709,675.03		
May	HDN-2	Weekday	510.900	553,344.000	104,677.733	448,666.267	0.0011	0.0011	0.0	624,730.27		
Jun	HDN-2	Weekday	35,004.063	534,480.000	0.000	534,480.000	0.0655	0.0655	0.0	754,560.00		
Jul	HDN-2	Weekday	1,843.700	559,632.000	0.000	559,632.000	0.0033	0.0033	0.0	779,712.00		

**Analysis of on and off peak periods during weekends and weekdays
For the 48 months ending March 2006**

Month	Unit ID	Period	Total				Average % derate
			Total Lost MWh	Total Poss. MWh	Total Planned & RS MWh	Scheduled MWh	
Aug	HDN-2	Weekday	25,671.901	553,344.000	0.000	553,344.000	0.0464
Sep	HDN-2	Weekday	7,377.867	547,056.000	0.000	547,056.000	0.0135
Oct	HDN-2	Weekday	26,468.133	421,296.000	0.000	421,296.000	0.0628
Nov	HDN-2	Weekday	62,667.866	534,480.000	0.000	534,480.000	0.1173
Dec	HDN-2	Weekday	14,340.900	565,920.000	0.000	565,920.000	0.0253
Jan	HRM-1	Weekday	7,687.509	510,245.808	0.000	510,245.808	0.0151
Feb	HRM-1	Weekday	0.000	457,908.000	2,541.892	455,366.108	0.0000
Mar	HRM-1	Weekday	0.000	512,029.536	61,484.542	450,544.994	0.0000
Apr	HRM-1	Weekday	1,083.533	482,071.368	56,978.688	425,092.680	0.0025
May	HRM-1	Weekday	35,141.800	492,678.024	126,318.572	366,359.452	0.0959
Jun	HRM-1	Weekday	0.000	471,255.792	117,819.127	353,436.665	0.0000
Jul	HRM-1	Weekday	599.133	488,870.592	80,249.052	408,621.540	0.0015
Aug	HRM-1	Weekday	1,164.017	484,692.096	0.000	484,692.096	0.0024
Sep	HRM-1	Weekday	1,755.100	486,346.128	0.000	486,346.128	0.0036
Oct	HRM-1	Weekday	3,422.892	379,421.664	0.000	379,421.664	0.0090
Nov	HRM-1	Weekday	5,593.083	491,121.504	0.000	491,121.504	0.0114
Dec	HRM-1	Weekday	7,909.185	522,530.928	14,181.200	508,349.728	0.0156
Jan	HRM-2	Weekday	4,093.099	510,245.808	0.000	510,245.808	0.0080
Feb	HRM-2	Weekday	811.875	457,908.000	2,365.500	455,542.500	0.0018
Mar	HRM-2	Weekday	3,033.917	512,029.536	28,219.583	483,809.953	0.0063
Apr	HRM-2	Weekday	1,083.533	482,071.368	11,375.200	470,696.168	0.0023
May	HRM-2	Weekday	8,156.274	492,678.024	235,199.887	257,478.137	0.0317
Jun	HRM-2	Weekday	491.267	471,255.792	117,839.032	353,416.760	0.0014
Jul	HRM-2	Weekday	24,387.741	488,870.592	78,899.994	409,970.598	0.0595
Aug	HRM-2	Weekday	83,948.442	484,692.096	3,137.673	481,554.423	0.1743
Sep	HRM-2	Weekday	5,203.697	486,346.128	0.000	486,346.128	0.0107
Oct	HRM-2	Weekday	2,761.687	379,421.664	0.000	379,421.664	0.0073
Nov	HRM-2	Weekday	0.000	491,121.504	0.000	491,121.504	0.0000
Dec	HRM-2	Weekday	8,198.683	522,530.928	20,541.928	501,989.000	0.0163
Jan	HTG-1	Weekday	68,892.647	937,080.000	0.000	937,080.000	0.0735
Feb	HTG-1	Weekday	179,209.884	852,000.000	0.000	852,000.000	0.2103
Mar	HTG-1	Weekday	66,776.920	958,680.000	52,800.000	905,880.000	0.0737
Apr	HTG-1	Weekday	94,293.315	923,880.000	64,970.000	858,910.000	0.1098
May	HTG-1	Weekday	64,776.851	934,440.000	0.000	934,440.000	0.0693
Jun	HTG-1	Weekday	109,858.901	902,880.000	0.000	902,880.000	0.1217
Jul	HTG-1	Weekday	42,397.632	945,000.000	0.000	945,000.000	0.0449
Aug	HTG-1	Weekday	177,307.767	934,680.000	0.000	934,680.000	0.1897
Sep	HTG-1	Weekday	103,934.566	926,640.000	106,800.000	819,840.000	0.1268
Oct	HTG-1	Weekday	79,500.465	712,800.000	0.000	712,800.000	0.1115
Nov	HTG-1	Weekday	114,424.300	905,280.000	0.000	905,280.000	0.1264
Dec	HTG-1	Weekday	88,891.667	958,560.000	0.000	958,560.000	0.0927
Jan	HTG-2	Weekday	131,673.779	953,160.000	0.000	953,160.000	0.1381
Feb	HTG-2	Weekday	110,234.548	866,400.000	0.000	866,400.000	0.1272
Mar	HTG-2	Weekday	66,614.850	974,520.000	0.000	974,520.000	0.0684
Apr	HTG-2	Weekday	90,775.701	944,880.000	0.000	944,880.000	0.0961
May	HTG-2	Weekday	63,887.534	955,800.000	0.000	955,800.000	0.0668
Jun	HTG-2	Weekday	142,880.751	922,920.000	0.000	922,920.000	0.1548

With Ramploss

Weekday	Weekend	Ramploss Lost MWh	Total Scheduled MWh
0.0464		0.0	779,712.00
0.0135		0.0	754,560.00
0.0628		0.0	585,570.00
0.1173		0.0	754,560.00
0.0253		0.0	779,712.00
0.0151		0.0	719,026.15
0.0000		0.0	620,917.34
0.0000		0.0	601,963.50
0.0025		0.0	579,076.52
0.0959		0.0	512,097.02
0.0000		0.0	481,084.74
0.0015		0.0	568,161.08
0.0024		0.0	682,955.54
0.0036		0.0	670,816.08
0.0090		0.0	527,291.63
0.0114		0.0	693,349.92
0.0156		0.0	694,144.07
0.0080		0.0	719,026.15
0.0018		0.0	632,535.23
0.0063		0.0	655,724.20
0.0023		0.0	641,439.26
0.0317		0.0	347,722.54
0.0014		0.0	480,917.05
0.0595		0.0	569,510.14
0.1743		0.0	678,104.54
0.0107		0.0	670,816.08
0.0073		0.0	527,291.63
0.0000		0.0	693,349.92
0.0163		0.0	676,167.34
0.0771		4740.5	1,320,600.00
0.2137		3989.5	1,203,480.00
0.0751		1682.0	1,243,871.33
0.1116		2082.0	1,176,510.00
0.0708		1938.0	1,316,880.00
0.1230		1642.3	1,274,400.00
0.0469		2638.0	1,316,880.00
0.1897		0.0	1,316,880.00
0.1278		1165.9	1,129,637.00
0.1143		2761.0	990,850.00
0.1288		3041.1	1,278,000.00
0.0931		520.0	1,320,600.00
0.1421		5349.0	1,342,920.00
0.1295		2783.0	1,223,760.00
0.0709		3404.0	1,342,920.00
0.0971		1293.0	1,301,390.00
0.0676		1066.0	1,346,640.00
0.1578		3933.0	1,303,200.00

**Analysis of on and off peak periods during weekends and weekdays
For the 48 months ending March 2006**

Month	Unit ID	Period	Total Lost MWh	Total Poss. MWh	Total Planned & RS MWh	Total		Average % derate	With Ramploss		
						Scheduled MWh	Average % derate		Weekday	Weekend	Ramploss Lost MWh
Jul	HTG-2	Weekday	106,402.785	966,720.000	0.000	966,720.000	0.1101	0.1117		2226.0	1,346,640.00
Aug	HTG-2	Weekday	118,452.497	955,560.000	0.000	955,560.000	0.1240	0.1269		3991.0	1,346,640.00
Sep	HTG-2	Weekday	39,452.202	942,120.000	3,640.008	938,479.992	0.0420	0.0439		2379.0	1,295,959.99
Oct	HTG-2	Weekday	27,306.917	726,360.000	251,160.552	475,199.448	0.0575	0.0575	0.0		670,499.26
Nov	HTG-2	Weekday	70,898.452	920,520.000	229,320.036	691,199.964	0.1026	0.1044		1742.0	971,999.92
Dec	HTG-2	Weekday	121,854.503	974,640.000	32,760.000	941,880.000	0.1294	0.1324		3986.0	1,299,240.00
Jan	HTR-1	Weekday	36,817.684	908,160.000	0.000	908,160.000	0.0405	0.0405	0.0		1,279,680.00
Feb	HTR-1	Weekday	228,345.321	825,600.000	0.000	825,600.000	0.2766	0.2783		2035.3	1,166,160.00
Mar	HTR-1	Weekday	88,019.831	928,800.000	0.000	928,800.000	0.0948	0.0957		1162.0	1,279,680.00
Apr	HTR-1	Weekday	85,292.499	897,840.000	155,007.833	742,832.167	0.1148	0.1166		1784.0	1,009,432.17
May	HTR-1	Weekday	29,954.533	908,160.000	75,493.666	832,666.334	0.0360	0.0367		873.0	1,173,226.33
Jun	HTR-1	Weekday	35,438.100	877,200.000	0.000	877,200.000	0.0404	0.0404	0.0		1,238,400.00
Jul	HTR-1	Weekday	43,232.917	918,480.000	0.000	918,480.000	0.0471	0.0471	0.0		1,279,680.00
Aug	HTR-1	Weekday	181,752.767	908,160.000	0.000	908,160.000	0.2001	0.2019		2299.0	1,279,680.00
Sep	HTR-1	Weekday	86,041.599	897,840.000	0.000	897,840.000	0.0958	0.0985		3318.0	1,238,400.00
Oct	HTR-1	Weekday	38,091.985	691,440.000	0.000	691,440.000	0.0551	0.0564		1284.0	961,050.00
Nov	HTR-1	Weekday	151,829.298	877,200.000	0.000	877,200.000	0.1731	0.1751		2468.0	1,238,400.00
Dec	HTR-1	Weekday	61,380.833	928,800.000	0.000	928,800.000	0.0661	0.0665		576.0	1,279,680.00
Jan	HTR-2	Weekday	41,329.967	908,160.000	0.000	908,160.000	0.0455	0.0477		2759.0	1,279,680.00
Feb	HTR-2	Weekday	72,877.316	825,600.000	0.000	825,600.000	0.0883	0.0890		799.0	1,166,160.00
Mar	HTR-2	Weekday	57,089.563	928,800.000	0.000	928,800.000	0.0615	0.0617		317.0	1,279,680.00
Apr	HTR-2	Weekday	37,677.284	897,840.000	206,729.667	691,110.333	0.0545	0.0545	0.0		947,820.33
May	HTR-2	Weekday	58,819.800	908,160.000	237,360.000	670,800.000	0.0877	0.0883		626.0	959,760.00
Jun	HTR-2	Weekday	82,075.833	877,200.000	93,353.000	783,847.000	0.1047	0.1063		1723.0	1,103,767.00
Jul	HTR-2	Weekday	65,720.916	918,480.000	0.000	918,480.000	0.0716	0.0717		219.0	1,279,680.00
Aug	HTR-2	Weekday	49,112.584	908,160.000	0.000	908,160.000	0.0541	0.0545		517.0	1,279,680.00
Sep	HTR-2	Weekday	129,201.215	897,840.000	0.000	897,840.000	0.1439	0.1451		1474.0	1,238,400.00
Oct	HTR-2	Weekday	157,959.250	691,440.000	0.000	691,440.000	0.2284	0.2297		1182.0	961,050.00
Nov	HTR-2	Weekday	112,962.748	877,200.000	0.000	877,200.000	0.1288	0.1288	0.0		1,238,400.00
Dec	HTR-2	Weekday	59,454.884	928,800.000	0.000	928,800.000	0.0640	0.0640	0.0		1,279,680.00
Jan	HTR-3	Weekday	113,785.085	971,520.000	0.000	971,520.000	0.1171	0.1171	0.0		1,368,960.00
Feb	HTR-3	Weekday	42,776.182	883,200.000	0.000	883,200.000	0.0484	0.0489		544.0	1,247,520.00
Mar	HTR-3	Weekday	120,372.517	993,600.000	0.000	993,600.000	0.1211	0.1211	0.0		1,368,960.00
Apr	HTR-3	Weekday	225,717.168	960,480.000	22,080.000	938,400.000	0.2405	0.2412		824.0	1,279,674.00
May	HTR-3	Weekday	55,521.933	971,520.000	39,345.333	932,174.667	0.0596	0.0596	0.0		1,307,534.67
Jun	HTR-3	Weekday	116,636.401	938,400.000	0.000	938,400.000	0.1243	0.1249		788.0	1,324,800.00
Jul	HTR-3	Weekday	53,458.299	982,560.000	0.000	982,560.000	0.0544	0.0549		727.0	1,368,960.00
Aug	HTR-3	Weekday	153,638.414	971,520.000	0.000	971,520.000	0.1581	0.1587		730.0	1,368,960.00
Sep	HTR-3	Weekday	85,878.383	960,480.000	0.000	960,480.000	0.0894	0.0900		767.0	1,324,800.00
Oct	HTR-3	Weekday	76,038.115	739,680.000	0.000	739,680.000	0.1028	0.1032		410.0	1,028,100.00
Nov	HTR-3	Weekday	45,830.182	938,400.000	0.000	938,400.000	0.0488	0.0488	0.0		1,324,800.00
Dec	HTR-3	Weekday	186,037.151	993,600.000	0.000	993,600.000	0.1872	0.1872	0.0		1,368,960.00
Jan	JB-1	Weekday	109,554.148	1,119,360.000	0.000	1,119,360.000	0.0979	0.0994		2475.0	1,577,280.00
Feb	JB-1	Weekday	188,221.449	1,017,600.000	0.000	1,017,600.000	0.1850	0.1872		3148.8	1,437,360.00
Mar	JB-1	Weekday	222,237.282	1,144,800.000	66,823.990	1,077,976.010	0.2062	0.2081		2829.0	1,460,468.18
Apr	JB-1	Weekday	136,479.302	1,106,640.000	0.000	1,106,640.000	0.1233	0.1257		3675.0	1,524,280.00
May	JB-1	Weekday	59,413.634	1,119,360.000	255,460.000	863,900.000	0.0688	0.0688	0.0		1,220,060.00

**Analysis of on and off peak periods during weekends and weekdays
For the 48 months ending March 2006**

Month	Unit ID	Period	Total Lost MWh	Total Poss. MWh	Total Planned & RS MWh	Total		Average % derate	With Ramploss		
						Scheduled MWh	Average % derate		Weekday	Weekend	Ramploss Lost MWh
Jun	JB-1	Weekday	127,416.017	1,081,200.000	63,600.000	1,017,600.000	0.1252	0.1282		4238.0	1,422,520.00
Jul	JB-1	Weekday	176,393.299	1,132,080.000	0.000	1,132,080.000	0.1558	0.1577		3008.0	1,577,280.00
Aug	JB-1	Weekday	266,834.333	1,119,360.000	0.000	1,119,360.000	0.2384	0.2400		2488.0	1,577,280.00
Sep	JB-1	Weekday	114,767.584	1,106,640.000	0.000	1,106,640.000	0.1037	0.1059		3420.0	1,526,400.00
Oct	JB-1	Weekday	54,123.250	852,240.000	0.000	852,240.000	0.0635	0.0643		909.0	1,184,550.00
Nov	JB-1	Weekday	78,973.817	1,081,200.000	0.000	1,081,200.000	0.0730	0.0736		895.0	1,526,400.00
Dec	JB-1	Weekday	132,067.969	1,144,800.000	0.000	1,144,800.000	0.1154	0.1170		2603.0	1,577,280.00
Jan	JB-2	Weekday	132,254.468	1,119,360.000	0.000	1,119,360.000	0.1182	0.1201		3112.0	1,577,280.00
Feb	JB-2	Weekday	160,412.618	1,017,600.000	0.000	1,017,600.000	0.1576	0.1600		3375.0	1,437,360.00
Mar	JB-2	Weekday	99,198.600	1,144,800.000	0.000	1,144,800.000	0.0867	0.0872		937.0	1,577,280.00
Apr	JB-2	Weekday	193,138.401	1,106,640.000	335,922.833	770,717.167	0.2506	0.2576		7204.0	1,024,057.17
May	JB-2	Weekday	92,262.100	1,119,360.000	254,400.000	864,960.000	0.1067	0.1110		5280.0	1,215,996.67
Jun	JB-2	Weekday	189,207.714	1,081,200.000	0.000	1,081,200.000	0.1750	0.1780		4639.0	1,526,400.00
Jul	JB-2	Weekday	193,109.951	1,132,080.000	0.000	1,132,080.000	0.1706	0.1728		3480.0	1,577,280.00
Aug	JB-2	Weekday	158,415.349	1,119,360.000	0.000	1,119,360.000	0.1415	0.1467		8110.0	1,577,280.00
Sep	JB-2	Weekday	143,798.450	1,106,640.000	0.000	1,106,640.000	0.1299	0.1331		4819.0	1,526,400.00
Oct	JB-2	Weekday	68,452.435	852,240.000	0.000	852,240.000	0.0803	0.0822		2232.0	1,184,550.00
Nov	JB-2	Weekday	237,292.516	1,081,200.000	0.000	1,081,200.000	0.2195	0.2223		4319.0	1,526,400.00
Dec	JB-2	Weekday	68,193.649	1,144,800.000	0.000	1,144,800.000	0.0596	0.0601		849.0	1,577,280.00
Jan	JB-3	Weekday	124,700.348	1,119,360.000	0.000	1,119,360.000	0.1114	0.1137		3673.0	1,577,280.00
Feb	JB-3	Weekday	201,470.385	1,017,600.000	0.000	1,017,600.000	0.1980	0.2020		5769.0	1,437,360.00
Mar	JB-3	Weekday	197,694.765	1,144,800.000	0.000	1,144,800.000	0.1727	0.1754		4210.0	1,577,280.00
Apr	JB-3	Weekday	141,308.717	1,106,640.000	0.000	1,106,640.000	0.1277	0.1314		5719.0	1,524,280.00
May	JB-3	Weekday	162,689.500	1,119,360.000	306,304.667	813,055.333	0.2001	0.2024		2572.0	1,131,055.33
Jun	JB-3	Weekday	149,162.415	1,081,200.000	246,626.667	834,573.333	0.1787	0.1834		5524.0	1,182,218.00
Jul	JB-3	Weekday	105,529.217	1,132,080.000	0.000	1,132,080.000	0.0932	0.0961		4492.0	1,577,280.00
Aug	JB-3	Weekday	180,820.095	1,119,360.000	0.000	1,119,360.000	0.1615	0.1665		7904.0	1,577,280.00
Sep	JB-3	Weekday	179,170.336	1,106,640.000	0.000	1,106,640.000	0.1619	0.1625		939.0	1,526,400.00
Oct	JB-3	Weekday	168,169.333	852,240.000	0.000	852,240.000	0.1973	0.2059		10163.0	1,184,550.00
Nov	JB-3	Weekday	114,045.086	1,081,200.000	0.000	1,081,200.000	0.1055	0.1081		4034.0	1,526,400.00
Dec	JB-3	Weekday	143,639.001	1,144,800.000	0.000	1,144,800.000	0.1255	0.1291		5707.0	1,577,280.00
Jan	JB-4	Weekday	232,588.388	1,119,360.000	0.000	1,119,360.000	0.2078	0.2113		5479.0	1,577,280.00
Feb	JB-4	Weekday	145,918.744	1,017,600.000	0.000	1,017,600.000	0.1434	0.1453		2725.0	1,437,360.00
Mar	JB-4	Weekday	222,075.799	1,144,800.000	0.000	1,144,800.000	0.1940	0.2007		10612.4	1,577,280.00
Apr	JB-4	Weekday	216,638.568	1,106,640.000	276,580.500	830,059.500	0.2610	0.2630		2308.0	1,146,734.50
May	JB-4	Weekday	72,964.265	1,119,360.000	267,120.000	852,240.000	0.0856	0.0883		3190.2	1,182,960.00
Jun	JB-4	Weekday	178,674.335	1,081,200.000	15,105.000	1,066,095.000	0.1676	0.1695		2880.0	1,511,295.00
Jul	JB-4	Weekday	173,076.950	1,132,080.000	0.000	1,132,080.000	0.1529	0.1554		3900.0	1,577,280.00
Aug	JB-4	Weekday	99,944.649	1,119,360.000	0.000	1,119,360.000	0.0893	0.0908		2394.8	1,577,280.00
Sep	JB-4	Weekday	108,037.816	1,106,640.000	0.000	1,106,640.000	0.0976	0.0995		2796.0	1,526,400.00
Oct	JB-4	Weekday	113,046.132	852,240.000	0.000	852,240.000	0.1326	0.1345		2168.0	1,184,550.00
Nov	JB-4	Weekday	118,286.867	1,081,200.000	0.000	1,081,200.000	0.1094	0.1109		2273.2	1,526,400.00
Dec	JB-4	Weekday	184,278.967	1,144,800.000	0.000	1,144,800.000	0.1610	0.1634		3838.8	1,577,280.00
Jan	LMT-1	Weekday	7.583	29,568.000	0.000	29,568.000	0.0003	0.0003		0.0	41,664.00
Feb	LMT-1	Weekday	313.500	26,880.000	0.000	26,880.000	0.0117	0.0117		0.0	37,968.00
Mar	LMT-1	Weekday	0.000	30,240.000	0.000	30,240.000	0.0000	0.0000		0.0	41,664.00
Apr	LMT-1	Weekday	101.266	29,232.000	835.800	28,396.200	0.0036	0.0036		0.0	39,092.20

**Analysis of on and off peak periods during weekends and weekdays
For the 48 months ending March 2006**

Month	Unit ID	Period	Total				Average % derate	With Ramploss		Total Scheduled MWh
			Total Lost MWh	Total Poss. MWh	Total Planned & RS MWh	Scheduled MWh		Weekday	Weekend	
May	LMT-1	Weekday	70.000	29,568.000	8,709.857	20,858.143	0.0034	0.0034	0.0	29,594.14
Jun	LMT-1	Weekday	1,629.500	28,560.000	19,515.286	9,044.714	0.1802	0.1802	0.0	11,732.71
Jul	LMT-1	Weekday	212.566	29,904.000	25,892.510	4,011.490	0.0530	0.0530	0.0	4,735.77
Aug	LMT-1	Weekday	6,436.266	29,568.000	18,868.276	10,699.724	0.6015	0.6015	0.0	15,422.15
Sep	LMT-1	Weekday	2,946.767	29,232.000	434.000	28,798.000	0.1023	0.1023	0.0	39,886.00
Oct	LMT-1	Weekday	182.000	22,512.000	0.000	22,512.000	0.0081	0.0081	0.0	31,290.00
Nov	LMT-1	Weekday	22.167	28,560.000	0.000	28,560.000	0.0008	0.0008	0.0	40,320.00
Dec	LMT-1	Weekday	239.166	30,240.000	494.662	29,745.338	0.0080	0.0080	0.0	41,169.34
Jan	NTN-1	Weekday	21,935.980	337,920.000	0.000	337,920.000	0.0649	0.0649	0.0	476,160.00
Feb	NTN-1	Weekday	10,183.216	307,200.000	0.000	307,200.000	0.0331	0.0336	188.0	433,920.00
Mar	NTN-1	Weekday	16,723.715	345,600.000	0.000	345,600.000	0.0484	0.0490	288.0	476,160.00
Apr	NTN-1	Weekday	44,488.599	334,080.000	23,386.667	310,693.333	0.1432	0.1456	1012.0	421,573.33
May	NTN-1	Weekday	34,321.869	337,920.000	0.000	337,920.000	0.1016	0.1018	124.0	476,160.00
Jun	NTN-1	Weekday	20,991.883	326,400.000	0.000	326,400.000	0.0643	0.0643	0.0	460,800.00
Jul	NTN-1	Weekday	57,339.152	341,760.000	0.000	341,760.000	0.1678	0.1680	130.0	476,160.00
Aug	NTN-1	Weekday	17,839.650	337,920.000	0.000	337,920.000	0.0528	0.0528	0.0	476,160.00
Sep	NTN-1	Weekday	22,367.417	334,080.000	41,666.667	292,413.333	0.0765	0.0765	0.0	403,773.33
Oct	NTN-1	Weekday	23,258.949	257,280.000	64,749.333	192,530.667	0.1208	0.1213	123.0	269,810.67
Nov	NTN-1	Weekday	22,775.884	326,400.000	0.000	326,400.000	0.0698	0.0713	680.0	460,800.00
Dec	NTN-1	Weekday	18,433.699	345,600.000	0.000	345,600.000	0.0533	0.0533	0.0	476,160.00
Jan	NTN-2	Weekday	23,460.684	443,520.000	0.000	443,520.000	0.0529	0.0531	110.0	624,960.00
Feb	NTN-2	Weekday	34,248.550	403,200.000	0.000	403,200.000	0.0849	0.0851	117.0	569,520.00
Mar	NTN-2	Weekday	38,157.531	453,600.000	0.000	453,600.000	0.0841	0.0849	463.0	624,960.00
Apr	NTN-2	Weekday	37,026.819	438,480.000	86,327.500	352,152.500	0.1051	0.1053	98.0	477,522.50
May	NTN-2	Weekday	44,074.768	443,520.000	55,639.500	387,880.500	0.1136	0.1172	1905.0	539,353.50
Jun	NTN-2	Weekday	21,570.666	428,400.000	0.000	428,400.000	0.0504	0.0515	689.0	604,800.00
Jul	NTN-2	Weekday	21,091.983	448,560.000	0.000	448,560.000	0.0470	0.0473	178.0	624,960.00
Aug	NTN-2	Weekday	24,887.384	443,520.000	0.000	443,520.000	0.0561	0.0570	564.0	624,960.00
Sep	NTN-2	Weekday	50,615.384	438,480.000	0.000	438,480.000	0.1154	0.1169	869.5	604,800.00
Oct	NTN-2	Weekday	41,148.064	337,680.000	50,802.500	286,877.500	0.1434	0.1472	1515.0	398,177.50
Nov	NTN-2	Weekday	26,204.051	428,400.000	40,211.500	388,188.500	0.0675	0.0689	750.0	544,428.50
Dec	NTN-2	Weekday	40,154.850	453,600.000	0.000	453,600.000	0.0885	0.0885	0.0	624,960.00
Jan	NTN-3	Weekday	48,395.719	696,960.000	0.000	696,960.000	0.0694	0.0702	770.0	982,080.00
Feb	NTN-3	Weekday	50,155.634	633,600.000	30,574.500	603,025.500	0.0832	0.0862	2602.0	849,882.00
Mar	NTN-3	Weekday	60,495.465	712,800.000	0.000	712,800.000	0.0849	0.0867	1825.0	982,080.00
Apr	NTN-3	Weekday	38,071.464	689,040.000	0.000	689,040.000	0.0553	0.0573	1955.0	949,080.00
May	NTN-3	Weekday	90,210.783	696,960.000	0.000	696,960.000	0.1294	0.1310	1490.0	982,080.00
Jun	NTN-3	Weekday	32,708.803	673,200.000	0.000	673,200.000	0.0486	0.0502	1494.0	950,400.00
Jul	NTN-3	Weekday	54,434.382	704,880.000	0.000	704,880.000	0.0772	0.0778	519.0	982,080.00
Aug	NTN-3	Weekday	24,487.886	696,960.000	0.000	696,960.000	0.0351	0.0351	0.0	982,080.00
Sep	NTN-3	Weekday	42,721.049	689,040.000	148,632.000	540,408.000	0.0791	0.0808	1270.8	723,057.50
Oct	NTN-3	Weekday	51,290.818	530,640.000	146,283.500	384,356.500	0.1334	0.1334	0.0	527,576.50
Nov	NTN-3	Weekday	168,383.733	673,200.000	0.000	673,200.000	0.2501	0.2505	331.0	950,400.00
Dec	NTN-3	Weekday	88,578.501	712,800.000	0.000	712,800.000	0.1243	0.1248	522.0	982,080.00
Jan	WV-1	Weekday	40.666	84,480.000	60,819.160	23,660.840	0.0017	0.0017	0.0	31,103.48
Feb	WV-1	Weekday	398.000	76,800.000	56,538.760	20,261.240	0.0196	0.0196	0.0	26,837.84
Mar	WV-1	Weekday	16.000	86,400.000	67,337.400	19,062.600	0.0008	0.0008	0.0	25,398.55

**Analysis of on and off peak periods during weekends and weekdays
For the 48 months ending March 2006**

With Ramploss

Month	Unit ID	Period	Total					Average % derate	Weekday	Weekend	Ramploss Lost MWh	Total Scheduled MWh
			Total Lost MWh	Total Poss. MWh	Total Planned & RS MWh	Scheduled MWh						
Apr	WV-1	Weekday	438.667	62,400.000	39,651.320	22,748.680	0.0193	0.0251	0.0	0.0	28,453.36	
May	WV-1	Weekday	478.001	62,400.000	37,930.760	24,469.240	0.0195	0.0253	0.0	0.0	30,273.24	
Jun	WV-1	Weekday	175.334	81,600.000	52,842.200	28,757.800	0.0061	0.0061	0.0	0.0	40,771.28	
Jul	WV-1	Weekday	357.332	85,440.000	39,298.080	46,141.920	0.0077	0.0077	0.0	0.0	63,586.64	
Aug	WV-1	Weekday	1,220.665	84,480.000	36,044.000	48,436.000	0.0252	0.0252	0.0	0.0	67,028.68	
Sep	WV-1	Weekday	3,766.665	83,520.000	47,990.760	35,529.240	0.1060	0.1060	0.0	0.0	49,283.80	
Oct	WV-1	Weekday	3,390.665	64,320.000	33,926.840	30,393.160	0.1116	0.1116	0.0	0.0	40,841.20	
Nov	WV-1	Weekday	136.666	81,600.000	64,981.880	16,618.120	0.0082	0.0082	0.0	0.0	22,772.84	
Dec	WV-1	Weekday	45.334	86,400.000	61,288.693	25,111.307	0.0018	0.0018	0.0	0.0	32,599.99	
Jan	WV-2	Weekday	0.000	84,480.000	59,023.200	25,456.800	0.0000	0.0000	0.0	0.0	34,270.12	
Feb	WV-2	Weekday	298.667	76,800.000	55,728.720	21,071.280	0.0142	0.0142	0.0	0.0	27,577.28	
Mar	WV-2	Weekday	0.000	86,400.000	66,357.280	20,042.720	0.0000	0.0000	0.0	0.0	27,082.80	
Apr	WV-2	Weekday	311.333	62,400.000	38,629.240	23,770.760	0.0131	0.0205	0.0	0.0	31,744.68	
May	WV-2	Weekday	1,882.001	62,400.000	35,512.680	26,887.320	0.0700	0.0631	0.0	0.0	33,192.64	
Jun	WV-2	Weekday	638.002	81,600.000	51,390.600	30,209.400	0.0211	0.0211	0.0	0.0	40,284.76	
Jul	WV-2	Weekday	2,795.332	85,440.000	38,684.560	46,755.440	0.0598	0.0598	0.0	0.0	64,791.28	
Aug	WV-2	Weekday	9,854.667	84,480.000	33,404.600	51,075.400	0.1929	0.1929	0.0	0.0	71,836.64	
Sep	WV-2	Weekday	918.250	83,520.000	47,190.680	36,329.320	0.0253	0.0253	0.0	0.0	49,014.00	
Oct	WV-2	Weekday	918.000	64,320.000	34,494.200	29,825.800	0.0308	0.0308	0.0	0.0	40,382.56	
Nov	WV-2	Weekday	156.000	81,600.000	62,103.000	19,497.000	0.0080	0.0080	0.0	0.0	26,129.04	
Dec	WV-2	Weekday	81.334	86,400.000	60,053.280	26,346.720	0.0031	0.0031	0.0	0.0	33,622.05	
Jan	WV-3	Weekday	0.000	84,480.000	57,304.760	27,175.240	0.0000	0.0000	0.0	0.0	36,907.84	
Feb	WV-3	Weekday	429.334	76,800.000	54,305.280	22,494.720	0.0191	0.0191	0.0	0.0	28,852.68	
Mar	WV-3	Weekday	4.667	86,400.000	65,117.080	21,282.920	0.0002	0.0002	0.0	0.0	27,316.95	
Apr	WV-3	Weekday	921.334	62,400.000	36,299.360	26,100.640	0.0353	0.0371	0.0	0.0	35,591.88	
May	WV-3	Weekday	2,341.332	62,400.000	34,116.320	28,283.680	0.0828	0.0727	0.0	0.0	36,832.48	
Jun	WV-3	Weekday	626.000	81,600.000	48,829.520	32,770.480	0.0191	0.0191	0.0	0.0	44,481.92	
Jul	WV-3	Weekday	1,486.665	85,440.000	34,416.320	51,023.680	0.0291	0.0291	0.0	0.0	70,742.24	
Aug	WV-3	Weekday	0.000	84,480.000	35,418.160	49,061.840	0.0000	0.0000	0.0	0.0	69,548.64	
Sep	WV-3	Weekday	1,420.667	83,520.000	41,469.240	42,050.760	0.0338	0.0338	0.0	0.0	56,908.08	
Oct	WV-3	Weekday	3,684.000	64,320.000	33,763.400	30,556.600	0.1206	0.1206	0.0	0.0	40,361.84	
Nov	WV-3	Weekday	362.667	81,600.000	62,232.640	19,367.360	0.0187	0.0187	0.0	0.0	26,274.64	
Dec	WV-3	Weekday	218.000	86,400.000	57,475.147	28,924.853	0.0075	0.0075	0.0	0.0	36,630.85	
Jan	WV-4	Weekday	9,804.666	84,480.000	57,968.000	26,512.000	0.3698	0.3698	0.0	0.0	36,220.52	
Feb	WV-4	Weekday	19,200.000	76,800.000	51,481.440	25,318.560	0.7583	0.7583	0.0	0.0	34,640.56	
Mar	WV-4	Weekday	20,160.000	86,400.000	59,386.080	27,013.920	0.7463	0.7463	0.0	0.0	40,207.92	
Apr	WV-4	Weekday	3,712.000	62,400.000	38,495.920	23,904.080	0.1553	0.1271	0.0	0.0	30,479.44	
May	WV-4	Weekday	2,135.333	62,400.000	41,438.040	20,961.960	0.1019	0.0871	0.0	0.0	28,727.32	
Jun	WV-4	Weekday	116.668	81,600.000	50,174.680	31,425.320	0.0037	0.0037	0.0	0.0	43,079.80	
Jul	WV-4	Weekday	1,028.666	85,440.000	35,489.160	49,950.840	0.0206	0.0206	0.0	0.0	69,700.80	
Aug	WV-4	Weekday	1,189.333	84,480.000	37,798.120	46,681.880	0.0255	0.0255	0.0	0.0	64,266.52	
Sep	WV-4	Weekday	546.001	83,520.000	45,170.600	38,349.400	0.0142	0.0142	0.0	0.0	49,824.04	
Oct	WV-4	Weekday	215.334	64,320.000	38,094.720	26,225.280	0.0082	0.0082	0.0	0.0	35,391.92	
Nov	WV-4	Weekday	4,094.000	81,600.000	64,488.560	17,111.440	0.2393	0.2393	0.0	0.0	24,298.72	
Dec	WV-4	Weekday	84.667	86,400.000	63,005.520	23,394.480	0.0036	0.0036	0.0	0.0	30,572.51	
Jan	WV-5	Weekday	890.666	84,480.000	66,192.080	18,287.920	0.0487	0.0487	0.0	0.0	24,226.00	
Feb	WV-5	Weekday	296.667	76,800.000	57,818.000	18,982.000	0.0156	0.0156	0.0	0.0	24,723.32	

**Analysis of on and off peak periods during weekends and weekdays
For the 48 months ending March 2006**

Month	Unit ID	Period	Total				Average % derate	With Ramploss			
			Total Lost MWh	Total Poss. MWh	Total Planned & RS MWh	Scheduled MWh		Weekday	Weekend	Ramploss Lost MWh	Total Scheduled MWh
Mar	WV-5	Weekday	30.000	86,400.000	68,854.520	17,545.480	0.0017	0.0017		0.0	23,611.44
Apr	WV-5	Weekday	303.333	62,400.000	41,197.440	21,202.560	0.0143	0.0214		0.0	27,737.16
May	WV-5	Weekday	128.666	62,400.000	40,871.360	21,528.640	0.0060	0.0151		0.0	28,267.40
Jun	WV-5	Weekday	792.001	62,400.000	38,301.280	24,098.720	0.0329	0.0353		0.0	32,913.92
Jul	WV-5	Weekday	765.999	63,360.000	28,488.880	34,871.120	0.0220	0.0271		0.0	48,909.16
Aug	WV-5	Weekday	168.666	84,480.000	37,690.800	46,789.200	0.0036	0.0036		0.0	64,879.16
Sep	WV-5	Weekday	5,206.666	83,520.000	46,346.240	37,173.760	0.1401	0.1401		0.0	47,379.80
Oct	WV-5	Weekday	3,275.000	64,320.000	39,699.160	24,620.840	0.1330	0.1330		0.0	35,232.76
Nov	WV-5	Weekday	257.333	81,600.000	67,819.400	13,780.600	0.0187	0.0187		0.0	19,854.64
Dec	WV-5	Weekday	160.667	86,400.000	62,073.933	24,326.067	0.0066	0.0066		0.0	30,827.33
Jan	WYO-1	Weekday	26,366.763	707,520.000	0.000	707,520.000	0.0373	0.0422	4898.0		996,960.00
Feb	WYO-1	Weekday	44,513.164	643,200.000	0.000	643,200.000	0.0692	0.0717	2284.3		908,520.00
Mar	WYO-1	Weekday	70,709.017	723,600.000	0.000	723,600.000	0.0977	0.0997	2011.0		996,960.00
Apr	WYO-1	Weekday	28,268.416	699,480.000	40,987.250	658,492.750	0.0429	0.0449	1769.0		890,647.75
May	WYO-1	Weekday	46,627.449	707,520.000	0.000	707,520.000	0.0659	0.0683	2345.0		996,960.00
Jun	WYO-1	Weekday	42,573.643	683,400.000	0.000	683,400.000	0.0623	0.0656	3208.0		964,800.00
Jul	WYO-1	Weekday	27,345.753	715,560.000	0.000	715,560.000	0.0382	0.0393	1058.0		996,960.00
Aug	WYO-1	Weekday	65,376.095	707,520.000	0.000	707,520.000	0.0924	0.0940	1582.0		996,960.00
Sep	WYO-1	Weekday	31,066.919	699,480.000	0.000	699,480.000	0.0444	0.0453	858.0		964,800.00
Oct	WYO-1	Weekday	10,751.667	538,680.000	0.000	538,680.000	0.0200	0.0215	1165.0		748,725.00
Nov	WYO-1	Weekday	18,853.917	683,400.000	0.000	683,400.000	0.0276	0.0281	519.0		964,800.00
Dec	WYO-1	Weekday	14,398.000	723,600.000	0.000	723,600.000	0.0199	0.0213	1372.0		996,960.00
Jan	BLN-1	Weekend	1,434.333	19,872.000	0.000	19,872.000	0.0722		0.0722	0.0	68,448.00
Feb	BLN-1	Weekend	776.500	18,216.000	0.000	18,216.000	0.0426		0.0426	0.0	62,259.85
Mar	BLN-1	Weekend	322.600	18,768.000	0.000	18,768.000	0.0172		0.0172	0.0	68,448.00
Apr	BLN-1	Weekend	72.634	18,124.000	1,104.000	17,020.000	0.0043		0.0044	6.0	64,317.97
May	BLN-1	Weekend	27.600	19,872.000	0.000	19,872.000	0.0014		0.0017	21.9	68,448.00
Jun	BLN-1	Weekend	865.100	19,320.000	0.000	19,320.000	0.0448		0.0452	30.0	66,240.00
Jul	BLN-1	Weekend	456.383	19,320.000	0.000	19,320.000	0.0236		0.0238	15.0	68,448.00
Aug	BLN-1	Weekend	1,772.817	19,872.000	0.000	19,872.000	0.0892		0.0894	10.0	68,395.49
Sep	BLN-1	Weekend	740.717	18,216.000	543.567	17,672.433	0.0419		0.0419	0.0	63,427.87
Oct	BLN-1	Weekend	415.000	14,421.000	164.450	14,256.550	0.0291		0.0297	29.0	49,619.05
Nov	BLN-1	Weekend	180.666	19,320.000	0.000	19,320.000	0.0094		0.0094	0.0	66,240.00
Dec	BLN-1	Weekend	555.833	18,768.000	0.000	18,768.000	0.0296		0.0297	7.0	68,448.00
Jan	CHO-4	Weekend	20,084.084	328,320.000	0.000	328,320.000	0.0612		0.0627	1733.0	1,130,880.00
Feb	CHO-4	Weekend	18,006.800	300,960.000	0.000	300,960.000	0.0598		0.0620	2252.7	1,030,560.00
Mar	CHO-4	Weekend	9,315.999	310,080.000	19,588.999	290,491.001	0.0321		0.0333	1359.0	1,065,691.00
Apr	CHO-4	Weekend	50,819.233	299,440.000	72,960.000	226,480.000	0.2244		0.2253	724.0	837,437.67
May	CHO-4	Weekend	77,391.817	328,320.000	18,240.000	310,080.000	0.2496		0.2526	3269.2	1,079,681.33
Jun	CHO-4	Weekend	38,521.016	319,200.000	0.000	319,200.000	0.1207		0.1268	6664.0	1,094,400.00
Jul	CHO-4	Weekend	37,409.350	319,200.000	0.000	319,200.000	0.1172		0.1206	3899.8	1,130,880.00
Aug	CHO-4	Weekend	5,854.184	328,320.000	0.000	328,320.000	0.0178		0.0223	5038.0	1,130,880.00
Sep	CHO-4	Weekend	29,501.649	300,960.000	0.000	300,960.000	0.0980		0.0998	1912.0	1,094,400.00
Oct	CHO-4	Weekend	57,357.484	238,260.000	0.000	238,260.000	0.2407		0.2435	2318.0	849,300.00
Nov	CHO-4	Weekend	7,509.350	319,200.000	0.000	319,200.000	0.0235		0.0247	1284.0	1,094,400.00
Dec	CHO-4	Weekend	6,410.500	310,080.000	0.000	310,080.000	0.0207		0.0223	1871.0	1,130,880.00
Jan	COL-3	Weekend	120,215.268	639,360.000	0.000	639,360.000	0.1880		0.1880	0.0	2,202,240.00

**Analysis of on and off peak periods during weekends and weekdays
For the 48 months ending March 2006**

Month	Unit ID	Period	Total				Average % derate
			Total Lost MWh	Total Poss. MWh	Total Planned & RS MWh	Scheduled MWh	
Feb	COL-3	Weekend	53,797.835	586,080.000	0.000	586,080.000	0.0918
Mar	COL-3	Weekend	104,511.915	603,840.000	0.000	603,840.000	0.1731
Apr	COL-3	Weekend	42,960.451	583,120.000	106,560.000	476,560.000	0.0901
May	COL-3	Weekend	8,851.648	639,360.000	177,600.000	461,760.000	0.0192
Jun	COL-3	Weekend	186,821.633	621,600.000	0.000	621,600.000	0.3005
Jul	COL-3	Weekend	164,334.295	621,600.000	0.000	621,600.000	0.2644
Aug	COL-3	Weekend	83,188.664	639,360.000	0.000	639,360.000	0.1301
Sep	COL-3	Weekend	78,052.717	586,080.000	0.000	586,080.000	0.1332
Oct	COL-3	Weekend	48,900.435	463,980.000	0.000	463,980.000	0.1054
Nov	COL-3	Weekend	66,049.933	621,600.000	0.000	621,600.000	0.1063
Dec	COL-3	Weekend	190,434.550	603,840.000	0.000	603,840.000	0.3154
Jan	COL-4	Weekend	14,861.433	639,360.000	0.000	639,360.000	0.0232
Feb	COL-4	Weekend	54,472.883	586,080.000	0.000	586,080.000	0.0929
Mar	COL-4	Weekend	7,590.000	603,840.000	71,040.000	532,800.000	0.0142
Apr	COL-4	Weekend	50,057.368	583,120.000	141,340.000	441,780.000	0.1133
May	COL-4	Weekend	19,619.087	639,360.000	77,700.000	561,660.000	0.0349
Jun	COL-4	Weekend	112,182.000	621,600.000	0.000	621,600.000	0.1805
Jul	COL-4	Weekend	119,802.183	621,600.000	0.000	621,600.000	0.1927
Aug	COL-4	Weekend	12,832.783	639,360.000	0.000	639,360.000	0.0201
Sep	COL-4	Weekend	30,416.750	586,080.000	0.000	586,080.000	0.0519
Oct	COL-4	Weekend	77,000.533	463,980.000	0.000	463,980.000	0.1660
Nov	COL-4	Weekend	142,895.333	621,600.000	0.000	621,600.000	0.2299
Dec	COL-4	Weekend	11,814.000	603,840.000	0.000	603,840.000	0.0196
Jan	CRB-1	Weekend	18,460.767	57,888.000	0.000	57,888.000	0.3189
Feb	CRB-1	Weekend	3,255.950	53,064.000	0.000	53,064.000	0.0614
Mar	CRB-1	Weekend	6,817.629	54,672.000	0.000	54,672.000	0.1247
Apr	CRB-1	Weekend	4,798.151	53,369.000	0.000	53,369.000	0.0899
May	CRB-1	Weekend	6,005.366	58,464.000	0.000	58,464.000	0.1027
Jun	CRB-1	Weekend	51.367	57,000.000	0.000	57,000.000	0.0009
Jul	CRB-1	Weekend	2,346.133	56,856.000	0.000	56,856.000	0.0413
Aug	CRB-1	Weekend	920.700	58,536.000	0.000	58,536.000	0.0157
Sep	CRB-1	Weekend	6,018.820	53,712.000	5,553.334	48,158.666	0.1250
Oct	CRB-1	Weekend	3,182.151	42,009.000	9,628.878	32,380.122	0.0983
Nov	CRB-1	Weekend	2,016.001	56,280.000	12,863.952	43,416.048	0.0464
Dec	CRB-1	Weekend	16,728.916	54,672.000	3,204.833	51,467.167	0.3250
Jan	CRB-2	Weekend	16,994.366	90,720.000	0.000	90,720.000	0.1873
Feb	CRB-2	Weekend	4,346.101	83,160.000	0.000	83,160.000	0.0523
Mar	CRB-2	Weekend	1,855.218	85,680.000	4,003.998	81,676.002	0.0227
Apr	CRB-2	Weekend	4,293.082	82,740.000	9,782.500	72,957.500	0.0588
May	CRB-2	Weekend	2,659.550	90,720.000	22,421.000	68,299.000	0.0389
Jun	CRB-2	Weekend	10,704.583	88,200.000	0.000	88,200.000	0.1214
Jul	CRB-2	Weekend	4,866.067	88,200.000	50.715	88,149.285	0.0552
Aug	CRB-2	Weekend	11,756.685	90,720.000	2,220.750	88,499.250	0.1328
Sep	CRB-2	Weekend	7,172.401	83,160.000	0.000	83,160.000	0.0862
Oct	CRB-2	Weekend	7,516.716	65,835.000	0.000	65,835.000	0.1142
Nov	CRB-2	Weekend	4,329.115	88,200.000	0.000	88,200.000	0.0491
Dec	CRB-2	Weekend	13,737.366	85,680.000	0.000	85,680.000	0.1603

With Ramploss

Weekday	Weekend	Ramploss Lost MWh	Total Scheduled MWh
	0.0918	0.0	2,006,880.00
	0.1731	0.0	2,202,240.00
	0.0901	0.0	1,754,675.67
	0.0192	0.0	1,651,680.00
	0.3005	0.0	2,084,185.33
	0.2644	0.0	2,202,240.00
	0.1301	0.0	2,202,240.00
	0.1332	0.0	2,131,200.00
	0.1054	0.0	1,653,900.00
	0.1063	0.0	2,131,200.00
	0.3154	0.0	2,202,240.00
	0.0232	0.0	2,202,240.00
	0.0929	0.0	2,006,374.58
	0.0142	0.0	2,023,900.00
	0.1133	0.0	1,596,180.00
	0.0349	0.0	1,911,420.00
	0.1805	0.0	2,131,200.00
	0.1927	0.0	2,202,240.00
	0.0201	0.0	2,202,240.00
	0.0519	0.0	2,131,200.00
	0.1660	0.0	1,653,900.00
	0.2299	0.0	2,131,200.00
	0.0196	0.0	2,202,240.00
	0.3205	310.0	199,392.00
	0.0617	63.0	181,704.00
	0.1254	143.5	199,392.00
	0.0906	138.0	194,849.00
	0.1045	364.0	201,624.00
	0.0017	159.0	195,120.00
	0.0425	240.0	199,918.31
	0.0166	174.0	201,624.00
	0.1270	373.0	182,006.68
	0.0987	53.0	124,036.36
	0.0468	50.0	144,720.28
	0.3260	188.0	191,363.17
	0.1886	411.0	312,480.00
	0.0528	166.0	284,760.00
	0.0236	256.0	295,876.00
	0.0588	0.0	266,997.50
	0.0410	487.8	239,659.00
	0.1231	510.0	302,400.00
	0.0566	442.0	312,429.29
	0.1350	654.3	307,205.54
	0.0873	310.0	302,400.00
	0.1161	456.0	234,675.00
	0.0508	522.3	302,400.00
	0.1614	346.0	312,480.00

**Analysis of on and off peak periods during weekends and weekdays
For the 48 months ending March 2006**

Month	Unit ID	Period	Total				Average % derate
			Total Lost MWh	Total Poss. MWh	Total Planned & RS MWh	Scheduled MWh	
Jan	CRG-1	Weekend	46,306.333	369,792.000	0.000	369,792.000	0.1252
Feb	CRG-1	Weekend	105,221.667	338,976.000	0.000	338,976.000	0.3104
Mar	CRG-1	Weekend	23,297.935	349,248.000	0.000	349,248.000	0.0667
Apr	CRG-1	Weekend	5,090.250	337,264.000	39,269.000	297,995.000	0.0171
May	CRG-1	Weekend	3,731.484	369,792.000	0.000	369,792.000	0.0101
Jun	CRG-1	Weekend	7,016.850	359,520.000	0.000	359,520.000	0.0195
Jul	CRG-1	Weekend	5,726.750	359,520.000	0.000	359,520.000	0.0159
Aug	CRG-1	Weekend	15,645.433	369,792.000	0.000	369,792.000	0.0423
Sep	CRG-1	Weekend	28,284.667	338,976.000	60,690.400	278,285.600	0.1016
Oct	CRG-1	Weekend	11,651.933	268,356.000	82,604.000	185,752.000	0.0627
Nov	CRG-1	Weekend	44,436.450	359,520.000	0.000	359,520.000	0.1236
Dec	CRG-1	Weekend	38,274.667	349,248.000	0.000	349,248.000	0.1096
Jan	CRG-2	Weekend	19,551.333	369,792.000	0.000	369,792.000	0.0529
Feb	CRG-2	Weekend	21,392.800	338,976.000	0.000	338,976.000	0.0631
Mar	CRG-2	Weekend	22,749.165	349,248.000	60,940.067	288,307.933	0.0789
Apr	CRG-2	Weekend	81.000	337,264.000	107,927.334	229,336.666	0.0004
May	CRG-2	Weekend	28,144.033	369,792.000	0.000	369,792.000	0.0761
Jun	CRG-2	Weekend	77,101.216	359,520.000	0.000	359,520.000	0.2145
Jul	CRG-2	Weekend	5,495.599	359,520.000	0.000	359,520.000	0.0153
Aug	CRG-2	Weekend	12,923.000	369,792.000	0.000	369,792.000	0.0349
Sep	CRG-2	Weekend	10,474.400	338,976.000	0.000	338,976.000	0.0309
Oct	CRG-2	Weekend	0.000	268,356.000	0.000	268,356.000	0.0000
Nov	CRG-2	Weekend	5,113.633	359,520.000	0.000	359,520.000	0.0142
Dec	CRG-2	Weekend	168.533	349,248.000	0.000	349,248.000	0.0005
Jan	DJ-1	Weekend	8,892.200	91,584.000	0.000	91,584.000	0.0971
Feb	DJ-1	Weekend	1,114.000	83,952.000	0.000	83,952.000	0.0133
Mar	DJ-1	Weekend	7,694.367	86,496.000	0.000	86,496.000	0.0890
Apr	DJ-1	Weekend	5,035.767	83,528.000	0.000	83,528.000	0.0603
May	DJ-1	Weekend	4,634.000	91,584.000	5,088.000	86,496.000	0.0536
Jun	DJ-1	Weekend	12,220.933	89,040.000	10,004.633	79,035.367	0.1546
Jul	DJ-1	Weekend	4,644.000	89,040.000	0.000	89,040.000	0.0522
Aug	DJ-1	Weekend	4,556.000	91,584.000	0.000	91,584.000	0.0497
Sep	DJ-1	Weekend	8,598.283	83,952.000	5,063.267	78,888.733	0.1090
Oct	DJ-1	Weekend	3,140.000	66,462.000	20,458.000	46,004.000	0.0683
Nov	DJ-1	Weekend	573.000	89,040.000	0.000	89,040.000	0.0064
Dec	DJ-1	Weekend	1,043.000	86,496.000	0.000	86,496.000	0.0121
Jan	DJ-2	Weekend	3,503.400	91,584.000	0.000	91,584.000	0.0383
Feb	DJ-2	Weekend	2,150.000	83,952.000	0.000	83,952.000	0.0256
Mar	DJ-2	Weekend	2,931.000	86,496.000	0.000	86,496.000	0.0339
Apr	DJ-2	Weekend	1,436.000	83,528.000	10,176.000	73,352.000	0.0196
May	DJ-2	Weekend	2,252.000	91,584.000	0.000	91,584.000	0.0246
Jun	DJ-2	Weekend	4,173.867	89,040.000	0.000	89,040.000	0.0469
Jul	DJ-2	Weekend	6,675.603	89,040.000	0.000	89,040.000	0.0750
Aug	DJ-2	Weekend	7,167.730	91,584.000	0.000	91,584.000	0.0783
Sep	DJ-2	Weekend	4,317.949	83,952.000	0.000	83,952.000	0.0514
Oct	DJ-2	Weekend	4,272.200	66,462.000	0.000	66,462.000	0.0643
Nov	DJ-2	Weekend	1,632.000	89,040.000	0.000	89,040.000	0.0183

With Ramploss

Weekday	Weekend	Ramploss Lost MWh	Total Scheduled MWh
	0.1252	0.0	1,273,728.00
	0.3104	0.0	1,160,736.00
	0.0667	0.0	1,273,728.00
	0.0171	0.0	1,137,909.33
	0.0101	0.0	1,273,728.00
	0.0195	0.0	1,232,640.00
	0.0159	0.0	1,273,728.00
	0.0423	0.0	1,273,728.00
	0.1016	0.0	1,048,685.60
	0.0627	0.0	646,001.80
	0.1236	0.0	1,232,640.00
	0.1096	0.0	1,273,728.00
	0.0529	0.0	1,273,728.00
	0.0631	0.0	1,160,736.00
	0.0789	0.0	1,079,251.93
	0.0004	0.0	865,159.20
	0.0761	0.0	1,273,728.00
	0.2145	0.0	1,232,640.00
	0.0153	0.0	1,273,728.00
	0.0349	0.0	1,273,728.00
	0.0309	0.0	1,232,640.00
	0.0000	0.0	956,580.00
	0.0142	0.0	1,232,640.00
	0.0005	0.0	1,273,728.00
	0.0987	494.0	315,456.00
	0.0133	0.0	287,472.00
	0.0890	132.0	315,456.00
	0.0603	107.0	304,856.00
	0.0540	130.0	295,513.87
	0.1564	478.0	276,819.00
	0.0527	174.0	315,456.00
	0.0497	0.0	315,456.00
	0.1091	22.0	295,128.73
	0.0713	519.0	167,888.10
	0.0064	0.0	305,280.00
	0.0121	0.0	315,456.00
	0.0385	87.0	315,456.00
	0.0260	99.0	287,472.00
	0.0347	246.0	306,610.30
	0.0199	95.0	279,223.43
	0.0249	88.0	315,456.00
	0.0475	183.0	305,280.00
	0.0754	142.0	315,456.00
	0.0787	144.0	315,456.00
	0.0514	0.0	305,280.00
	0.0657	333.0	236,910.00
	0.0183	0.0	305,280.00

**Analysis of on and off peak periods during weekends and weekdays
For the 48 months ending March 2006**

Month	Unit ID	Period	Total				Average % derate
			Total Lost MWh	Total Poss. MWh	Total Planned & RS MWh	Scheduled MWh	
Dec	DJ-2	Weekend	8,947.334	86,496.000	0.000	86,496.000	0.1034
Jan	DJ-3	Weekend	18,972.517	190,080.000	0.000	190,080.000	0.0998
Feb	DJ-3	Weekend	6,283.334	174,240.000	0.000	174,240.000	0.0361
Mar	DJ-3	Weekend	51,667.517	179,520.000	0.000	179,520.000	0.2878
Apr	DJ-3	Weekend	32,002.201	173,360.000	4,539.333	168,820.667	0.1896
May	DJ-3	Weekend	25,903.000	190,080.000	47,520.000	142,560.000	0.1817
Jun	DJ-3	Weekend	8,298.217	184,800.000	10,560.000	174,240.000	0.0476
Jul	DJ-3	Weekend	19,598.633	184,800.000	0.000	184,800.000	0.1061
Aug	DJ-3	Weekend	17,349.766	190,080.000	0.000	190,080.000	0.0913
Sep	DJ-3	Weekend	21,792.333	174,240.000	0.000	174,240.000	0.1251
Oct	DJ-3	Weekend	21,383.516	137,940.000	0.000	137,940.000	0.1550
Nov	DJ-3	Weekend	1,740.900	184,800.000	0.000	184,800.000	0.0094
Dec	DJ-3	Weekend	21,647.000	179,520.000	0.000	179,520.000	0.1206
Jan	DJ-4	Weekend	43,271.167	285,120.000	0.000	285,120.000	0.1518
Feb	DJ-4	Weekend	42,314.601	261,360.000	0.000	261,360.000	0.1619
Mar	DJ-4	Weekend	29,749.533	269,280.000	31,377.500	237,902.500	0.1250
Apr	DJ-4	Weekend	13,169.800	260,040.000	115,973.000	144,067.000	0.0914
May	DJ-4	Weekend	27,504.750	285,120.000	31,641.500	253,478.500	0.1085
Jun	DJ-4	Weekend	85,409.733	277,200.000	0.000	277,200.000	0.3081
Jul	DJ-4	Weekend	55,857.917	277,200.000	0.000	277,200.000	0.2015
Aug	DJ-4	Weekend	33,351.650	285,120.000	0.000	285,120.000	0.1170
Sep	DJ-4	Weekend	5,819.900	261,360.000	0.000	261,360.000	0.0223
Oct	DJ-4	Weekend	36,360.267	206,910.000	0.000	206,910.000	0.1757
Nov	DJ-4	Weekend	65,023.500	277,200.000	0.000	277,200.000	0.2346
Dec	DJ-4	Weekend	29,836.500	269,280.000	0.000	269,280.000	0.1108
Jan	GAD-1	Weekend	0.000	51,840.000	51,840.000	0.000	0.0000
Feb	GAD-1	Weekend	0.000	47,520.000	47,520.000	0.000	0.0000
Mar	GAD-1	Weekend	0.000	48,960.000	48,960.020	0.000	0.0000
Apr	GAD-1	Weekend	152.000	47,280.000	42,388.980	4,891.020	0.0311
May	GAD-1	Weekend	1,440.000	51,840.000	48,414.960	3,425.040	0.4204
Jun	GAD-1	Weekend	7,531.000	50,400.000	37,636.980	12,763.020	0.5901
Jul	GAD-1	Weekend	56.000	50,400.000	36,621.960	13,778.040	0.0041
Aug	GAD-1	Weekend	34.000	51,840.000	42,429.000	9,411.000	0.0036
Sep	GAD-1	Weekend	0.000	47,520.000	40,109.100	7,410.900	0.0000
Oct	GAD-1	Weekend	0.000	37,620.000	34,671.000	2,949.000	0.0000
Nov	GAD-1	Weekend	0.000	50,400.000	48,877.020	1,522.980	0.0000
Dec	GAD-1	Weekend	0.000	48,960.000	48,960.000	0.000	0.0000
Jan	GAD-2	Weekend	0.000	64,800.000	64,800.000	0.000	0.0000
Feb	GAD-2	Weekend	0.000	59,400.000	55,800.000	3,600.000	0.0000
Mar	GAD-2	Weekend	0.000	61,200.000	61,200.000	0.000	0.0000
Apr	GAD-2	Weekend	0.000	59,100.000	47,296.275	11,803.725	0.0000
May	GAD-2	Weekend	46.250	64,800.000	56,413.800	8,386.200	0.0055
Jun	GAD-2	Weekend	4,190.000	63,000.000	48,496.275	14,503.725	0.2889
Jul	GAD-2	Weekend	1,738.750	63,000.000	40,526.250	22,473.750	0.0774
Aug	GAD-2	Weekend	180.000	64,800.000	47,207.400	17,592.600	0.0102
Sep	GAD-2	Weekend	3,140.000	59,400.000	46,432.425	12,967.575	0.2421
Oct	GAD-2	Weekend	0.000	47,025.000	42,347.475	4,677.525	0.0000

With Ramploss

Weekday	Weekend	Ramploss Lost MWh	Total Scheduled MWh
	0.1042	224.0	315,456.00
	0.1014	1060.0	654,720.00
	0.0365	268.0	596,640.00
	0.2926	3147.0	654,720.00
	0.1926	1907.0	628,180.67
	0.1846	1441.0	491,040.00
	0.0493	1004.0	598,884.00
	0.1073	789.0	654,720.00
	0.0938	1630.0	654,720.00
	0.1265	914.0	633,600.00
	0.1572	1067.0	491,700.00
	0.0104	629.0	633,600.00
	0.1235	1894.0	654,720.00
	0.1534	1589.0	982,080.00
	0.1648	2598.0	894,960.00
	0.1276	2292.5	903,182.50
	0.0935	1140.0	539,489.50
	0.1104	1699.0	894,998.50
	0.3143	5862.0	950,400.00
	0.2041	2550.0	982,080.00
	0.1197	2666.0	982,080.00
	0.0234	1109.0	950,400.00
	0.1772	1078.0	737,550.00
	0.2372	2519.0	950,400.00
	0.1131	2249.5	982,080.00
	0.0000	0.0	0.00
	0.0000	0.0	0.00
	0.0000	0.0	0.00
	0.1584	1964.0	15,429.12
	0.5218	2013.0	19,854.96
	0.6520	2649.0	42,768.06
	0.1259	6488.0	53,252.10
	0.1211	4803.0	40,874.64
	0.0640	2002.0	31,292.88
	0.0866	1618.0	18,689.10
	0.0765	274.0	3,579.96
	0.0000	0.0	0.00
	0.0000	0.0	0.00
	0.0672	384.0	5,711.25
	0.0000	0.0	3,493.73
	0.0921	3740.0	40,586.33
	0.1044	3656.0	36,973.58
	0.3771	4223.0	47,887.50
	0.1817	9464.0	90,753.68
	0.1036	6366.1	68,191.35
	0.2924	2257.0	44,893.95
	0.0715	2096.0	29,312.55

**Analysis of on and off peak periods during weekends and weekdays
For the 48 months ending March 2006**

Month	Unit ID	Period	Total Lost MWh	Total Poss. MWh	Total Planned & RS MWh	Total		Average % derate	With Ramploss		
						Scheduled MWh	derate		Weekday	Weekend	Ramploss Lost MWh
Nov	GAD-2	Weekend	0.000	63,000.000	60,886.200	2,113.800	0.0000		0.0601	301.0	5,010.00
Dec	GAD-2	Weekend	0.000	61,200.000	61,200.000	0.000	0.0000		0.0000	0.0	0.00
Jan	GAD-3	Weekend	0.000	86,400.000	86,400.000	0.000	0.0000		0.0000	0.0	0.00
Feb	GAD-3	Weekend	0.000	79,200.000	79,200.000	0.000	0.0000		0.0000	0.0	0.00
Mar	GAD-3	Weekend	201.667	81,600.000	78,481.700	3,118.300	0.0647		0.1780	2714.0	23,943.40
Apr	GAD-3	Weekend	0.000	78,800.000	65,681.700	13,118.300	0.0000		0.0413	3119.0	75,535.00
May	GAD-3	Weekend	2,410.000	86,400.000	70,603.400	15,796.600	0.1526		0.1938	2879.0	69,736.60
Jun	GAD-3	Weekend	0.000	84,000.000	58,803.100	25,196.900	0.0000		0.1164	10250.0	88,035.40
Jul	GAD-3	Weekend	1,892.067	84,000.000	42,771.700	41,228.300	0.0459		0.1410	15491.0	162,888.60
Aug	GAD-3	Weekend	2,023.333	86,400.000	52,304.900	34,095.100	0.0593		0.1516	12586.0	136,459.70
Sep	GAD-3	Weekend	0.000	79,200.000	57,246.500	21,953.500	0.0000		0.0581	4872.0	83,822.00
Oct	GAD-3	Weekend	5,091.667	62,700.000	44,126.700	18,573.300	0.2741		0.3246	3804.0	75,411.70
Nov	GAD-3	Weekend	0.000	84,000.000	80,328.400	3,671.600	0.0000		0.0480	501.0	10,444.90
Dec	GAD-3	Weekend	0.000	81,600.000	81,600.000	0.000	0.0000		0.0000	0.0	0.00
Jan	GAD-4	Weekend	198.667	34,560.000	26,333.280	8,226.720	0.0241		0.0241	0.0	33,572.48
Feb	GAD-4	Weekend	992.000	31,680.000	23,624.760	8,055.240	0.1231		0.1231	0.0	33,353.04
Mar	GAD-4	Weekend	0.000	32,640.000	27,621.320	5,018.680	0.0000		0.0000	0.0	27,989.96
Apr	GAD-4	Weekend	924.000	23,880.000	14,050.800	9,829.200	0.0940		0.0812	0.0	35,947.84
May	GAD-4	Weekend	0.000	26,880.000	17,513.280	9,366.720	0.0000		0.0107	0.0	35,436.88
Jun	GAD-4	Weekend	438.666	24,000.000	14,448.680	9,551.320	0.0459		0.0451	0.0	37,734.80
Jul	GAD-4	Weekend	223.333	25,920.000	11,933.320	13,986.680	0.0160		0.0226	0.0	51,107.32
Aug	GAD-4	Weekend	1,090.000	34,560.000	15,551.960	19,008.040	0.0573		0.0573	0.0	65,798.56
Sep	GAD-4	Weekend	2,926.666	31,680.000	17,051.920	14,628.080	0.2001		0.2001	0.0	55,202.68
Oct	GAD-4	Weekend	30.000	25,080.000	13,989.320	11,090.680	0.0027		0.0027	0.0	43,672.72
Nov	GAD-4	Weekend	1,508.000	33,600.000	25,890.720	7,709.280	0.1956		0.1956	0.0	29,501.32
Dec	GAD-4	Weekend	960.000	32,640.000	25,365.960	7,274.040	0.1320		0.1320	0.0	34,223.24
Jan	GAD-5	Weekend	0.000	34,560.000	27,090.640	7,469.360	0.0000		0.0000	0.0	31,257.48
Feb	GAD-5	Weekend	1,574.668	31,680.000	24,034.040	7,645.960	0.2059		0.2059	0.0	32,131.32
Mar	GAD-5	Weekend	0.000	32,640.000	28,975.920	3,664.080	0.0000		0.0000	0.0	24,096.12
Apr	GAD-5	Weekend	0.000	23,880.000	15,284.040	8,595.960	0.0000		0.0107	0.0	33,165.24
May	GAD-5	Weekend	0.000	26,880.000	17,744.040	9,135.960	0.0000		0.0107	0.0	33,328.16
Jun	GAD-5	Weekend	1,175.332	24,000.000	15,165.920	8,834.080	0.1330		0.1104	0.0	34,852.24
Jul	GAD-5	Weekend	16.666	25,920.000	12,620.640	13,299.360	0.0013		0.0116	0.0	48,759.32
Aug	GAD-5	Weekend	1,528.001	34,560.000	15,989.920	18,570.080	0.0823		0.0823	0.0	66,590.68
Sep	GAD-5	Weekend	3,594.000	31,680.000	17,634.000	14,046.000	0.2559		0.2559	0.0	50,203.28
Oct	GAD-5	Weekend	2,378.667	25,080.000	13,555.320	11,524.680	0.2064		0.2064	0.0	45,774.68
Nov	GAD-5	Weekend	6,536.001	33,600.000	23,553.280	10,046.720	0.6506		0.6506	0.0	36,884.16
Dec	GAD-5	Weekend	240.667	32,640.000	26,871.200	5,768.800	0.0417		0.0417	0.0	30,594.80
Jan	GAD-6	Weekend	0.000	34,560.000	27,938.653	6,621.347	0.0000		0.0000	0.0	27,572.67
Feb	GAD-6	Weekend	0.000	31,680.000	24,794.000	6,886.000	0.0000		0.0000	0.0	28,996.52
Mar	GAD-6	Weekend	0.000	32,640.000	29,816.640	2,823.360	0.0000		0.0000	0.0	21,442.92
Apr	GAD-6	Weekend	20.667	23,880.000	16,138.680	7,741.320	0.0027		0.0127	0.0	29,640.08
May	GAD-6	Weekend	1,463.333	26,880.000	17,154.520	9,725.480	0.1505		0.1235	0.0	31,279.57
Jun	GAD-6	Weekend	0.000	24,000.000	15,530.640	8,469.360	0.0000		0.0107	0.0	33,468.00
Jul	GAD-6	Weekend	3,840.000	25,920.000	10,788.680	15,131.320	0.2538		0.2010	0.0	53,111.88
Aug	GAD-6	Weekend	1,208.666	34,560.000	16,204.120	18,355.880	0.0658		0.0658	0.0	62,158.32
Sep	GAD-6	Weekend	6,734.000	31,680.000	18,466.000	13,214.000	0.5096		0.5096	0.0	52,242.00

**Analysis of on and off peak periods during weekends and weekdays
For the 48 months ending March 2006**

Month	Unit ID	Period	Total				Average % derate
			Total Lost MWh	Total Poss. MWh	Total Planned & RS MWh	Scheduled MWh	
Oct	GAD-6	Weekend	679.333	25,080.000	16,847.280	8,232.720	0.0825
Nov	GAD-6	Weekend	39.333	33,600.000	27,231.400	6,368.600	0.0062
Dec	GAD-6	Weekend	329.334	32,640.000	27,496.000	5,144.000	0.0640
Jan	HDN-1	Weekend	8,757.367	158,976.000	0.000	158,976.000	0.0551
Feb	HDN-1	Weekend	9,991.600	145,728.000	0.000	145,728.000	0.0686
Mar	HDN-1	Weekend	13,884.696	150,144.000	0.000	150,144.000	0.0925
Apr	HDN-1	Weekend	17,820.537	144,992.000	17,664.000	127,328.000	0.1400
May	HDN-1	Weekend	2,333.867	158,976.000	39,744.000	119,232.000	0.0196
Jun	HDN-1	Weekend	18,964.403	154,560.000	4,416.000	150,144.000	0.1263
Jul	HDN-1	Weekend	15,215.370	154,560.000	0.000	154,560.000	0.0984
Aug	HDN-1	Weekend	18,610.201	158,976.000	0.000	158,976.000	0.1171
Sep	HDN-1	Weekend	8,832.000	145,728.000	0.000	145,728.000	0.0606
Oct	HDN-1	Weekend	19,018.200	115,368.000	0.000	115,368.000	0.1648
Nov	HDN-1	Weekend	13,572.733	154,560.000	0.000	154,560.000	0.0878
Dec	HDN-1	Weekend	17,664.000	150,144.000	0.000	150,144.000	0.1176
Jan	HDN-2	Weekend	615.700	226,368.000	0.000	226,368.000	0.0027
Feb	HDN-2	Weekend	0.000	207,504.000	0.000	207,504.000	0.0000
Mar	HDN-2	Weekend	0.000	213,792.000	0.000	213,792.000	0.0000
Apr	HDN-2	Weekend	17,185.850	206,456.000	12,396.967	194,059.033	0.0886
May	HDN-2	Weekend	0.000	226,368.000	50,304.000	176,064.000	0.0000
Jun	HDN-2	Weekend	12,532.300	220,080.000	0.000	220,080.000	0.0569
Jul	HDN-2	Weekend	2,054.000	220,080.000	0.000	220,080.000	0.0093
Aug	HDN-2	Weekend	8,549.933	226,368.000	0.000	226,368.000	0.0378
Sep	HDN-2	Weekend	566.200	207,504.000	0.000	207,504.000	0.0027
Oct	HDN-2	Weekend	12,838.000	164,274.000	0.000	164,274.000	0.0781
Nov	HDN-2	Weekend	52,065.163	220,080.000	0.000	220,080.000	0.2366
Dec	HDN-2	Weekend	13,619.700	213,792.000	0.000	213,792.000	0.0637
Jan	HRM-1	Weekend	4,626.220	208,780.344	0.000	208,780.344	0.0222
Feb	HRM-1	Weekend	1,145.125	188,944.728	23,393.500	165,551.228	0.0069
Mar	HRM-1	Weekend	0.000	193,330.080	41,911.579	151,418.501	0.0000
Apr	HRM-1	Weekend	2,985.875	182,071.089	28,087.250	153,983.839	0.0194
May	HRM-1	Weekend	14,126.584	201,546.888	55,809.317	145,737.571	0.0969
Jun	HRM-1	Weekend	225.000	193,999.728	66,351.656	127,648.072	0.0018
Jul	HRM-1	Weekend	0.000	192,275.544	32,736.000	159,539.544	0.0000
Aug	HRM-1	Weekend	3,106.300	198,263.448	0.000	198,263.448	0.0157
Sep	HRM-1	Weekend	4,207.170	184,469.952	0.000	184,469.952	0.0228
Oct	HRM-1	Weekend	0.000	147,869.966	0.000	147,869.966	0.0000
Nov	HRM-1	Weekend	2,773.409	202,228.416	0.000	202,228.416	0.0137
Dec	HRM-1	Weekend	0.000	197,410.344	11,616.000	185,794.344	0.0000
Jan	HRM-2	Weekend	10,041.119	208,780.344	0.000	208,780.344	0.0481
Feb	HRM-2	Weekend	12,219.300	188,944.728	11,952.000	176,992.728	0.0690
Mar	HRM-2	Weekend	1,408.700	193,330.080	21,415.834	171,914.246	0.0082
Apr	HRM-2	Weekend	1,660.667	182,071.089	11,328.000	170,743.089	0.0097
May	HRM-2	Weekend	0.000	201,546.888	111,302.483	90,244.405	0.0000
Jun	HRM-2	Weekend	1,119.150	194,124.288	66,624.000	127,500.288	0.0088
Jul	HRM-2	Weekend	11,009.000	192,275.544	32,736.000	159,539.544	0.0690
Aug	HRM-2	Weekend	41,768.500	198,263.448	1,713.327	196,550.121	0.2125

With Ramploss

Weekday	Weekend	Ramploss Lost MWh	Total Scheduled MWh
	0.0825	0.0	38,452.12
	0.0062	0.0	23,888.60
	0.0640	0.0	26,218.00
	0.0551	0.0	547,584.00
	0.0686	0.0	499,008.00
	0.0925	0.0	547,584.00
	0.1400	0.0	471,868.00
	0.0196	0.0	410,688.00
	0.1263	0.0	518,236.00
	0.0984	0.0	547,584.00
	0.1171	0.0	547,584.00
	0.0606	0.0	529,920.00
	0.1648	0.0	411,240.00
	0.0878	0.0	529,920.00
	0.1176	0.0	547,584.00
	0.0027	0.0	779,712.00
	0.0000	0.0	710,544.00
	0.0000	0.0	779,712.00
	0.0886	0.0	709,675.03
	0.0000	0.0	624,730.27
	0.0569	0.0	754,560.00
	0.0093	0.0	779,712.00
	0.0378	0.0	779,712.00
	0.0027	0.0	754,560.00
	0.0781	0.0	585,570.00
	0.2366	0.0	754,560.00
	0.0637	0.0	779,712.00
	0.0222	0.0	719,026.15
	0.0069	0.0	620,917.34
	0.0000	0.0	601,963.50
	0.0194	0.0	579,076.52
	0.0969	0.0	512,097.02
	0.0018	0.0	481,084.74
	0.0000	0.0	568,161.08
	0.0157	0.0	682,955.54
	0.0228	0.0	670,816.08
	0.0000	0.0	527,291.63
	0.0137	0.0	693,349.92
	0.0000	0.0	694,144.07
	0.0481	0.0	719,026.15
	0.0690	0.0	632,535.23
	0.0082	0.0	655,724.20
	0.0097	0.0	641,439.26
	0.0000	0.0	347,722.54
	0.0088	0.0	480,917.05
	0.0690	0.0	569,510.14
	0.2125	0.0	678,104.54

**Analysis of on and off peak periods during weekends and weekdays
For the 48 months ending March 2006**

Month	Unit ID	Period	Total				Average % derate	With Ramploss			
			Total Lost MWh	Total Poss. MWh	Total Planned & RS MWh	Scheduled MWh		Weekday	Weekend	Ramploss Lost MWh	Total Scheduled MWh
Sep	HRM-2	Weekend	2,163.133	184,469.952	0.000	184,469.952	0.0117		0.0117	0.0	670,816.08
Oct	HRM-2	Weekend	0.000	147,869.966	0.000	147,869.966	0.0000		0.0000	0.0	527,291.63
Nov	HRM-2	Weekend	1,183.983	202,228.416	0.000	202,228.416	0.0059		0.0059	0.0	693,349.92
Dec	HRM-2	Weekend	4,653.380	197,410.344	23,232.000	174,178.344	0.0267		0.0267	0.0	676,167.34
Jan	HTG-1	Weekend	30,465.611	383,520.000	0.000	383,520.000	0.0794		0.0830	4740.5	1,320,600.00
Feb	HTG-1	Weekend	106,052.648	351,480.000	0.000	351,480.000	0.3017		0.3050	3989.5	1,203,480.00
Mar	HTG-1	Weekend	21,804.799	361,920.000	23,928.667	337,991.333	0.0645		0.0659	1682.0	1,243,871.33
Apr	HTG-1	Weekend	65,437.633	348,750.000	31,150.000	317,600.000	0.2060		0.2078	2082.0	1,176,510.00
May	HTG-1	Weekend	63,063.533	382,440.000	0.000	382,440.000	0.1649		0.1664	1938.0	1,316,880.00
Jun	HTG-1	Weekend	11,139.333	371,520.000	0.000	371,520.000	0.0300		0.0313	1642.3	1,274,400.00
Jul	HTG-1	Weekend	55,397.482	371,880.000	0.000	371,880.000	0.1490		0.1510	2638.0	1,316,880.00
Aug	HTG-1	Weekend	75,681.300	382,200.000	0.000	382,200.000	0.1980		0.1980	0.0	1,316,880.00
Sep	HTG-1	Weekend	38,150.416	351,360.000	41,563.000	309,797.000	0.1231		0.1242	1165.9	1,129,637.00
Oct	HTG-1	Weekend	70,887.616	278,050.000	0.000	278,050.000	0.2549		0.2577	2761.0	990,850.00
Nov	HTG-1	Weekend	65,271.150	372,720.000	0.000	372,720.000	0.1751		0.1775	3041.1	1,278,000.00
Dec	HTG-1	Weekend	28,558.266	362,040.000	0.000	362,040.000	0.0789		0.0793	520.0	1,320,600.00
Jan	HTG-2	Weekend	40,729.300	389,760.000	0.000	389,760.000	0.1045		0.1085	5349.0	1,342,920.00
Feb	HTG-2	Weekend	17,236.216	357,360.000	0.000	357,360.000	0.0482		0.0505	2783.0	1,223,760.00
Mar	HTG-2	Weekend	64,374.234	368,400.000	0.000	368,400.000	0.1747		0.1773	3404.0	1,342,920.00
Apr	HTG-2	Weekend	38,790.967	356,510.000	0.000	356,510.000	0.1088		0.1098	1293.0	1,301,390.00
May	HTG-2	Weekend	23,147.483	390,840.000	0.000	390,840.000	0.0592		0.0600	1066.0	1,346,640.00
Jun	HTG-2	Weekend	43,872.350	380,280.000	0.000	380,280.000	0.1154		0.1184	3933.0	1,303,200.00
Jul	HTG-2	Weekend	92,546.250	379,920.000	0.000	379,920.000	0.2436		0.2452	2226.0	1,346,640.00
Aug	HTG-2	Weekend	33,478.066	391,080.000	0.000	391,080.000	0.0856		0.0886	3991.0	1,346,640.00
Sep	HTG-2	Weekend	43,813.167	357,480.000	0.000	357,480.000	0.1226		0.1244	2379.0	1,295,959.99
Oct	HTG-2	Weekend	3,916.933	283,115.000	87,815.190	195,299.810	0.0201		0.0201	0.0	670,499.26
Nov	HTG-2	Weekend	17,059.034	379,080.000	98,280.048	280,799.952	0.0608		0.0625	1742.0	971,999.92
Dec	HTG-2	Weekend	46,224.850	368,280.000	10,920.000	357,360.000	0.1294		0.1324	3986.0	1,299,240.00
Jan	HTR-1	Weekend	25,539.882	371,520.000	0.000	371,520.000	0.0687		0.0687	0.0	1,279,680.00
Feb	HTR-1	Weekend	99,304.700	340,560.000	0.000	340,560.000	0.2916		0.2933	2035.3	1,166,160.00
Mar	HTR-1	Weekend	28,084.066	350,880.000	0.000	350,880.000	0.0800		0.0809	1162.0	1,279,680.00
Apr	HTR-1	Weekend	37,433.582	338,840.000	72,240.000	266,600.000	0.1404		0.1422	1784.0	1,009,432.17
May	HTR-1	Weekend	26,511.066	371,520.000	30,960.000	340,560.000	0.0778		0.0786	873.0	1,173,226.33
Jun	HTR-1	Weekend	10,003.666	361,200.000	0.000	361,200.000	0.0277		0.0277	0.0	1,238,400.00
Jul	HTR-1	Weekend	5,310.519	361,200.000	0.000	361,200.000	0.0147		0.0147	0.0	1,279,680.00
Aug	HTR-1	Weekend	69,343.849	371,520.000	0.000	371,520.000	0.1866		0.1884	2299.0	1,279,680.00
Sep	HTR-1	Weekend	40,661.752	340,560.000	0.000	340,560.000	0.1194		0.1221	3318.0	1,238,400.00
Oct	HTR-1	Weekend	22,650.283	269,610.000	0.000	269,610.000	0.0840		0.0853	1284.0	961,050.00
Nov	HTR-1	Weekend	89,471.003	361,200.000	0.000	361,200.000	0.2477		0.2497	2468.0	1,238,400.00
Dec	HTR-1	Weekend	19,775.383	350,880.000	0.000	350,880.000	0.0564		0.0568	576.0	1,279,680.00
Jan	HTR-2	Weekend	67,257.650	371,520.000	0.000	371,520.000	0.1810		0.1832	2759.0	1,279,680.00
Feb	HTR-2	Weekend	32,346.250	340,560.000	0.000	340,560.000	0.0950		0.0957	799.0	1,166,160.00
Mar	HTR-2	Weekend	53,811.231	350,880.000	0.000	350,880.000	0.1534		0.1536	317.0	1,279,680.00
Apr	HTR-2	Weekend	8,574.734	338,840.000	82,130.000	256,710.000	0.0334		0.0334	0.0	947,820.33
May	HTR-2	Weekend	30,179.400	371,520.000	82,560.000	288,960.000	0.1044		0.1051	626.0	959,760.00
Jun	HTR-2	Weekend	39,627.650	361,200.000	41,280.000	319,920.000	0.1239		0.1254	1723.0	1,103,767.00
Jul	HTR-2	Weekend	13,625.434	361,200.000	0.000	361,200.000	0.0377		0.0379	219.0	1,279,680.00

**Analysis of on and off peak periods during weekends and weekdays
For the 48 months ending March 2006**

Month	Unit ID	Period	Total				Average % derate
			Total Lost MWh	Total Poss. MWh	Total Planned & RS MWh	Scheduled MWh	
Aug	HTR-2	Weekend	57,015.800	371,520.000	0.000	371,520.000	0.1535
Sep	HTR-2	Weekend	70,044.047	340,560.000	0.000	340,560.000	0.2057
Oct	HTR-2	Weekend	88,122.767	269,610.000	0.000	269,610.000	0.3269
Nov	HTR-2	Weekend	40,274.033	361,200.000	0.000	361,200.000	0.1115
Dec	HTR-2	Weekend	34,009.918	350,880.000	0.000	350,880.000	0.0969
Jan	HTR-3	Weekend	54,248.616	397,440.000	0.000	397,440.000	0.1365
Feb	HTR-3	Weekend	10,999.118	364,320.000	0.000	364,320.000	0.0302
Mar	HTR-3	Weekend	33,711.032	375,360.000	0.000	375,360.000	0.0898
Apr	HTR-3	Weekend	90,867.784	362,480.000	21,206.000	341,274.000	0.2663
May	HTR-3	Weekend	40,596.533	397,440.000	22,080.000	375,360.000	0.1082
Jun	HTR-3	Weekend	47,156.967	386,400.000	0.000	386,400.000	0.1220
Jul	HTR-3	Weekend	10,996.866	386,400.000	0.000	386,400.000	0.0285
Aug	HTR-3	Weekend	52,076.251	397,440.000	0.000	397,440.000	0.1310
Sep	HTR-3	Weekend	29,647.050	364,320.000	0.000	364,320.000	0.0814
Oct	HTR-3	Weekend	18,171.500	288,420.000	0.000	288,420.000	0.0630
Nov	HTR-3	Weekend	29,251.933	386,400.000	0.000	386,400.000	0.0757
Dec	HTR-3	Weekend	55,653.550	375,360.000	0.000	375,360.000	0.1483
Jan	JB-1	Weekend	56,615.902	457,920.000	0.000	457,920.000	0.1236
Feb	JB-1	Weekend	62,864.566	419,760.000	0.000	419,760.000	0.1498
Mar	JB-1	Weekend	86,828.416	432,480.000	49,987.833	382,492.167	0.2270
Apr	JB-1	Weekend	65,819.883	417,640.000	0.000	417,640.000	0.1576
May	JB-1	Weekend	41,754.133	457,920.000	101,760.000	356,160.000	0.1172
Jun	JB-1	Weekend	37,832.167	445,200.000	40,280.000	404,920.000	0.0934
Jul	JB-1	Weekend	77,245.516	445,200.000	0.000	445,200.000	0.1735
Aug	JB-1	Weekend	122,703.500	457,920.000	0.000	457,920.000	0.2680
Sep	JB-1	Weekend	33,865.867	419,760.000	0.000	419,760.000	0.0807
Oct	JB-1	Weekend	17,496.517	332,310.000	0.000	332,310.000	0.0527
Nov	JB-1	Weekend	42,397.766	445,200.000	0.000	445,200.000	0.0952
Dec	JB-1	Weekend	76,937.768	432,480.000	0.000	432,480.000	0.1779
Jan	JB-2	Weekend	95,183.733	457,920.000	0.000	457,920.000	0.2079
Feb	JB-2	Weekend	50,488.200	419,760.000	0.000	419,760.000	0.1203
Mar	JB-2	Weekend	42,614.567	432,480.000	0.000	432,480.000	0.0985
Apr	JB-2	Weekend	84,833.567	417,640.000	164,300.000	253,340.000	0.3349
May	JB-2	Weekend	59,599.034	457,920.000	106,883.334	351,036.666	0.1698
Jun	JB-2	Weekend	61,792.383	445,200.000	0.000	445,200.000	0.1388
Jul	JB-2	Weekend	59,468.682	445,200.000	0.000	445,200.000	0.1336
Aug	JB-2	Weekend	70,733.516	457,920.000	0.000	457,920.000	0.1545
Sep	JB-2	Weekend	32,054.716	419,760.000	0.000	419,760.000	0.0764
Oct	JB-2	Weekend	51,984.433	332,310.000	0.000	332,310.000	0.1564
Nov	JB-2	Weekend	131,991.250	445,200.000	0.000	445,200.000	0.2965
Dec	JB-2	Weekend	54,882.384	432,480.000	0.000	432,480.000	0.1269
Jan	JB-3	Weekend	40,703.199	457,920.000	0.000	457,920.000	0.0889
Feb	JB-3	Weekend	118,502.650	419,760.000	0.000	419,760.000	0.2823
Mar	JB-3	Weekend	50,415.829	432,480.000	0.000	432,480.000	0.1166
Apr	JB-3	Weekend	70,154.068	417,640.000	0.000	417,640.000	0.1680
May	JB-3	Weekend	83,680.783	457,920.000	139,920.000	318,000.000	0.2631
Jun	JB-3	Weekend	54,989.767	445,200.000	97,555.333	347,644.667	0.1582

With Ramploss

Weekday	Weekend	Ramploss Lost MWh	Total Scheduled MWh
	0.1539	517.0	1,279,680.00
	0.2069	1474.0	1,238,400.00
	0.3281	1182.0	961,050.00
	0.1115	0.0	1,238,400.00
	0.0969	0.0	1,279,680.00
	0.1365	0.0	1,368,960.00
	0.0306	544.0	1,247,520.00
	0.0898	0.0	1,368,960.00
	0.2669	824.0	1,279,674.00
	0.1082	0.0	1,307,534.67
	0.1226	788.0	1,324,800.00
	0.0290	727.0	1,368,960.00
	0.1316	730.0	1,368,960.00
	0.0820	767.0	1,324,800.00
	0.0634	410.0	1,028,100.00
	0.0757	0.0	1,324,800.00
	0.1483	0.0	1,368,960.00
	0.1252	2475.0	1,577,280.00
	0.1520	3148.8	1,437,360.00
	0.2289	2829.0	1,460,468.18
	0.1600	3675.0	1,524,280.00
	0.1172	0.0	1,220,060.00
	0.0964	4238.0	1,422,520.00
	0.1754	3008.0	1,577,280.00
	0.2695	2488.0	1,577,280.00
	0.0829	3420.0	1,526,400.00
	0.0534	909.0	1,184,550.00
	0.0958	895.0	1,526,400.00
	0.1795	2603.0	1,577,280.00
	0.2098	3112.0	1,577,280.00
	0.1226	3375.0	1,437,360.00
	0.0991	937.0	1,577,280.00
	0.3419	7204.0	1,024,057.17
	0.1741	5280.0	1,215,996.67
	0.1418	4639.0	1,526,400.00
	0.1358	3480.0	1,577,280.00
	0.1596	8110.0	1,577,280.00
	0.0795	4819.0	1,526,400.00
	0.1583	2232.0	1,184,550.00
	0.2993	4319.0	1,526,400.00
	0.1274	849.0	1,577,280.00
	0.0912	3673.0	1,577,280.00
	0.2863	5769.0	1,437,360.00
	0.1192	4210.0	1,577,280.00
	0.1717	5719.0	1,524,280.00
	0.2654	2572.0	1,131,055.33
	0.1629	5524.0	1,182,218.00

**Analysis of on and off peak periods during weekends and weekdays
For the 48 months ending March 2006**

Month	Unit ID	Period	Total				Average % derate
			Total Lost MWh	Total Poss. MWh	Total Planned & RS MWh	Scheduled MWh	
Jul	JB-3	Weekend	64,207.799	445,200.000	0.000	445,200.000	0.1442
Aug	JB-3	Weekend	68,997.483	457,920.000	0.000	457,920.000	0.1507
Sep	JB-3	Weekend	59,743.282	419,760.000	0.000	419,760.000	0.1423
Oct	JB-3	Weekend	84,869.283	332,310.000	0.000	332,310.000	0.2554
Nov	JB-3	Weekend	43,425.149	445,200.000	0.000	445,200.000	0.0975
Dec	JB-3	Weekend	59,172.866	432,480.000	0.000	432,480.000	0.1368
Jan	JB-4	Weekend	94,047.349	457,920.000	0.000	457,920.000	0.2054
Feb	JB-4	Weekend	98,976.034	419,760.000	0.000	419,760.000	0.2358
Mar	JB-4	Weekend	102,998.355	432,480.000	0.000	432,480.000	0.2382
Apr	JB-4	Weekend	42,019.518	417,640.000	100,965.000	316,675.000	0.1327
May	JB-4	Weekend	46,590.749	457,920.000	127,200.000	330,720.000	0.1409
Jun	JB-4	Weekend	76,204.303	445,200.000	0.000	445,200.000	0.1712
Jul	JB-4	Weekend	76,973.150	445,200.000	0.000	445,200.000	0.1729
Aug	JB-4	Weekend	57,445.701	457,920.000	0.000	457,920.000	0.1254
Sep	JB-4	Weekend	54,755.767	419,760.000	0.000	419,760.000	0.1304
Oct	JB-4	Weekend	41,468.250	332,310.000	0.000	332,310.000	0.1248
Nov	JB-4	Weekend	66,494.018	445,200.000	0.000	445,200.000	0.1494
Dec	JB-4	Weekend	102,128.933	432,480.000	0.000	432,480.000	0.2361
Jan	LMT-1	Weekend	0.000	12,096.000	0.000	12,096.000	0.0000
Feb	LMT-1	Weekend	0.000	11,088.000	0.000	11,088.000	0.0000
Mar	LMT-1	Weekend	0.000	11,424.000	0.000	11,424.000	0.0000
Apr	LMT-1	Weekend	77.000	11,032.000	336.000	10,696.000	0.0072
May	LMT-1	Weekend	0.000	12,096.000	3,360.000	8,736.000	0.0000
Jun	LMT-1	Weekend	106.600	11,760.000	9,072.000	2,688.000	0.0397
Jul	LMT-1	Weekend	0.000	11,760.000	11,035.724	724.276	0.0000
Aug	LMT-1	Weekend	3,204.367	12,096.000	7,373.576	4,722.424	0.6785
Sep	LMT-1	Weekend	1,008.000	11,088.000	0.000	11,088.000	0.0909
Oct	LMT-1	Weekend	0.000	8,778.000	0.000	8,778.000	0.0000
Nov	LMT-1	Weekend	0.000	11,760.000	0.000	11,760.000	0.0000
Dec	LMT-1	Weekend	259.000	11,424.000	0.000	11,424.000	0.0227
Jan	NTN-1	Weekend	6,846.867	138,240.000	0.000	138,240.000	0.0495
Feb	NTN-1	Weekend	10,064.983	126,720.000	0.000	126,720.000	0.0794
Mar	NTN-1	Weekend	3,858.383	130,560.000	0.000	130,560.000	0.0296
Apr	NTN-1	Weekend	9,103.098	126,080.000	15,200.000	110,880.000	0.0821
May	NTN-1	Weekend	18,527.766	138,240.000	0.000	138,240.000	0.1340
Jun	NTN-1	Weekend	6,369.401	134,400.000	0.000	134,400.000	0.0474
Jul	NTN-1	Weekend	15,928.537	134,400.000	0.000	134,400.000	0.1185
Aug	NTN-1	Weekend	18,341.450	138,240.000	0.000	138,240.000	0.1327
Sep	NTN-1	Weekend	7,007.251	126,720.000	15,360.000	111,360.000	0.0629
Oct	NTN-1	Weekend	1,544.551	100,320.000	23,040.000	77,280.000	0.0200
Nov	NTN-1	Weekend	15,831.670	134,400.000	0.000	134,400.000	0.1178
Dec	NTN-1	Weekend	12,159.534	130,560.000	0.000	130,560.000	0.0931
Jan	NTN-2	Weekend	13,185.603	181,440.000	0.000	181,440.000	0.0727
Feb	NTN-2	Weekend	9,942.033	166,320.000	0.000	166,320.000	0.0598
Mar	NTN-2	Weekend	11,358.469	171,360.000	0.000	171,360.000	0.0663
Apr	NTN-2	Weekend	10,112.718	165,480.000	40,110.000	125,370.000	0.0807
May	NTN-2	Weekend	19,454.949	181,440.000	29,967.000	151,473.000	0.1284

With Ramploss

Weekday	Weekend	Ramploss Lost MWh	Total Scheduled MWh
	0.1471	4492.0	1,577,280.00
	0.1557	7904.0	1,577,280.00
	0.1429	939.0	1,526,400.00
	0.2640	10163.0	1,184,550.00
	0.1002	4034.0	1,526,400.00
	0.1404	5707.0	1,577,280.00
	0.2089	5479.0	1,577,280.00
	0.2377	2725.0	1,437,360.00
	0.2449	10612.4	1,577,280.00
	0.1347	2308.0	1,146,734.50
	0.1436	3190.2	1,182,960.00
	0.1731	2880.0	1,511,295.00
	0.1754	3900.0	1,577,280.00
	0.1270	2394.8	1,577,280.00
	0.1323	2796.0	1,526,400.00
	0.1266	2168.0	1,184,550.00
	0.1508	2273.2	1,526,400.00
	0.2386	3838.8	1,577,280.00
	0.0000	0.0	41,664.00
	0.0000	0.0	37,968.00
	0.0000	0.0	41,664.00
	0.0072	0.0	39,092.20
	0.0000	0.0	29,594.14
	0.0397	0.0	11,732.71
	0.0000	0.0	4,735.77
	0.6785	0.0	15,422.15
	0.0909	0.0	39,886.00
	0.0000	0.0	31,290.00
	0.0000	0.0	40,320.00
	0.0227	0.0	41,169.34
	0.0495	0.0	476,160.00
	0.0794	188.0	433,920.00
	0.0302	288.0	476,160.00
	0.0845	1012.0	421,573.33
	0.1343	124.0	476,160.00
	0.0474	0.0	460,800.00
	0.1188	130.0	476,160.00
	0.1327	0.0	476,160.00
	0.0629	0.0	403,773.33
	0.0204	123.0	269,810.67
	0.1193	680.0	460,800.00
	0.0931	0.0	476,160.00
	0.0728	110.0	624,960
	0.0600	117.0	569,520
	0.0670	463.0	624,960
	0.0809	98.0	477,522.50
	0.1320	1905.0	539,353.50

**Analysis of on and off peak periods during weekends and weekdays
For the 48 months ending March 2006**

Month	Unit ID	Period	Total Lost MWh	Total Poss. MWh	Total Planned & RS MWh	Total		Average % derate	With Ramploss		
						Scheduled MWh	Average % derate		Weekday	Weekend	Ramploss Lost MWh
Jun	NTN-2	Weekend	12,658.697	176,400.000	0.000	176,400.000	0.0718		0.0729	689.0	604,800.00
Jul	NTN-2	Weekend	6,942.166	176,400.000	0.000	176,400.000	0.0394		0.0396	178.0	624,960.00
Aug	NTN-2	Weekend	18,341.799	181,440.000	0.000	181,440.000	0.1011		0.1020	564.0	624,960.00
Sep	NTN-2	Weekend	62,255.200	166,320.000	0.000	166,320.000	0.3743		0.3757	869.5	604,800.00
Oct	NTN-2	Weekend	6,500.417	131,670.000	20,370.000	111,300.000	0.0584		0.0622	1515.0	398,177.50
Nov	NTN-2	Weekend	18,954.718	176,400.000	20,160.000	156,240.000	0.1213		0.1227	750.0	544,428.50
Dec	NTN-2	Weekend	22,207.566	171,360.000	0.000	171,360.000	0.1296		0.1296	0.0	624,960
Jan	NTN-3	Weekend	6,061.867	285,120.000	0.000	285,120.000	0.0213		0.0220	770.0	982,080
Feb	NTN-3	Weekend	18,985.984	261,360.000	14,503.500	246,856.500	0.0769		0.0800	2602.0	849,882
Mar	NTN-3	Weekend	39,310.333	269,280.000	0.000	269,280.000	0.1460		0.1478	1825.0	982,080
Apr	NTN-3	Weekend	7,393.484	260,040.000	0.000	260,040.000	0.0284		0.0305	1955.0	949,080
May	NTN-3	Weekend	37,138.219	285,120.000	0.000	285,120.000	0.1303		0.1318	1490.0	982,080
Jun	NTN-3	Weekend	30,912.700	277,200.000	0.000	277,200.000	0.1115		0.1131	1494.0	950,400
Jul	NTN-3	Weekend	34,773.418	277,200.000	0.000	277,200.000	0.1254		0.1260	519.0	982,080
Aug	NTN-3	Weekend	6,483.299	285,120.000	0.000	285,120.000	0.0227		0.0227	0.0	982,080
Sep	NTN-3	Weekend	40,952.368	261,360.000	78,710.500	182,649.500	0.2242		0.2260	1270.8	723,058
Oct	NTN-3	Weekend	8,159.948	206,910.000	63,690.000	143,220.000	0.0570		0.0570	0.0	527,577
Nov	NTN-3	Weekend	87,329.350	277,200.000	0.000	277,200.000	0.3150		0.3154	331.0	950,400
Dec	NTN-3	Weekend	62,603.300	269,280.000	0.000	269,280.000	0.2325		0.2330	522.0	982,080
Jan	WV-1	Weekend	0.000	34,560.000	27,117.360	7,442.640	0.0000		0.0000	0.0	31,103
Feb	WV-1	Weekend	0.000	31,680.000	25,103.400	6,576.600	0.0000		0.0000	0.0	26,838
Mar	WV-1	Weekend	0.000	32,640.000	26,304.053	6,335.947	0.0000		0.0000	0.0	25,399
Apr	WV-1	Weekend	299.333	23,880.000	18,175.320	5,704.680	0.0525		0.0500	0.0	28,453
May	WV-1	Weekend	0.000	26,880.000	21,076.000	5,804.000	0.0000		0.0107	0.0	30,273
Jun	WV-1	Weekend	111.333	33,600.000	21,586.520	12,013.480	0.0093		0.0093	0.0	40,771
Jul	WV-1	Weekend	95.333	33,600.000	16,155.280	17,444.720	0.0055		0.0055	0.0	63,587
Aug	WV-1	Weekend	233.333	34,560.000	15,967.320	18,592.680	0.0125		0.0125	0.0	67,029
Sep	WV-1	Weekend	1,021.999	31,680.000	17,925.440	13,754.560	0.0743		0.0743	0.0	49,284
Oct	WV-1	Weekend	1,262.667	25,080.000	14,631.960	10,448.040	0.1209		0.1209	0.0	40,841
Nov	WV-1	Weekend	22.667	33,600.000	27,445.280	6,154.720	0.0037		0.0037	0.0	22,773
Dec	WV-1	Weekend	23.333	32,640.000	25,151.320	7,488.680	0.0031		0.0031	0.0	32,600
Jan	WV-2	Weekend	0.000	34,560.000	25,746.680	8,813.320	0.0000		0.0000	0.0	34,270
Feb	WV-2	Weekend	848.000	31,680.000	25,174.000	6,506.000	0.1303		0.1303	0.0	27,577
Mar	WV-2	Weekend	0.000	32,640.000	25,599.920	7,040.080	0.0000		0.0000	0.0	27,083
Apr	WV-2	Weekend	292.666	23,880.000	15,906.080	7,973.920	0.0367		0.0382	0.0	31,745
May	WV-2	Weekend	0.000	26,880.000	20,574.680	6,305.320	0.0000		0.0107	0.0	33,193
Jun	WV-2	Weekend	348.666	33,600.000	23,524.640	10,075.360	0.0346		0.0346	0.0	40,285
Jul	WV-2	Weekend	84.666	33,600.000	15,564.160	18,035.840	0.0047		0.0047	0.0	64,791
Aug	WV-2	Weekend	4,208.667	34,560.000	13,798.760	20,761.240	0.2027		0.2027	0.0	71,837
Sep	WV-2	Weekend	64.000	31,680.000	18,995.320	12,684.680	0.0050		0.0050	0.0	49,014
Oct	WV-2	Weekend	0.000	25,080.000	14,523.240	10,556.760	0.0000		0.0000	0.0	40,383
Nov	WV-2	Weekend	22.667	33,600.000	26,967.960	6,632.040	0.0034		0.0034	0.0	26,129
Dec	WV-2	Weekend	16.000	32,640.000	25,364.667	7,275.333	0.0022		0.0022	0.0	33,622
Jan	WV-3	Weekend	0.000	34,560.000	24,827.400	9,732.600	0.0000		0.0000	0.0	36,908
Feb	WV-3	Weekend	0.000	31,680.000	25,322.040	6,357.960	0.0000		0.0000	0.0	28,853
Mar	WV-3	Weekend	0.000	32,640.000	26,605.973	6,034.027	0.0000		0.0000	0.0	27,317
Apr	WV-3	Weekend	316.666	23,880.000	14,388.760	9,491.240	0.0334		0.0357	0.0	35,592

**Analysis of on and off peak periods during weekends and weekdays
For the 48 months ending March 2006**

Month	Unit ID	Period	Total Lost MWh	Total Poss. MWh	Total Planned & RS MWh	Total		Average % derate	With Ramploss		
						Scheduled MWh	Total Scheduled MWh		Weekday	Weekend	Ramploss Lost MWh
May	WV-3	Weekend	0.000	26,880.000	18,331.200	8,548.800	0.0000		0.0107	0.0	36,832
Jun	WV-3	Weekend	49.999	33,600.000	21,888.560	11,711.440	0.0043		0.0043	0.0	44,482
Jul	WV-3	Weekend	1,075.333	33,600.000	13,881.440	19,718.560	0.0545		0.0545	0.0	70,742
Aug	WV-3	Weekend	0.000	34,560.000	14,073.200	20,486.800	0.0000		0.0000	0.0	69,549
Sep	WV-3	Weekend	876.667	31,680.000	16,822.680	14,857.320	0.0590		0.0590	0.0	56,908
Oct	WV-3	Weekend	0.000	25,080.000	15,274.760	9,805.240	0.0000		0.0000	0.0	40,362
Nov	WV-3	Weekend	22.667	33,600.000	26,692.720	6,907.280	0.0033		0.0033	0.0	26,275
Dec	WV-3	Weekend	17.333	32,640.000	24,934.000	7,706.000	0.0022		0.0022	0.0	36,631
Jan	WV-4	Weekend	3,636.000	34,560.000	24,851.480	9,708.520	0.3745		0.3745	0.0	36,221
Feb	WV-4	Weekend	7,680.000	31,680.000	22,358.000	9,322.000	0.8239		0.8239	0.0	34,641
Mar	WV-4	Weekend	9,600.000	32,640.000	19,446.000	13,194.000	0.7276		0.7276	0.0	40,208
Apr	WV-4	Weekend	300.000	23,880.000	17,304.640	6,575.360	0.0456		0.0449	0.0	30,479
May	WV-4	Weekend	172.000	26,880.000	19,114.640	7,765.360	0.0221		0.0273	0.0	28,727
Jun	WV-4	Weekend	869.334	33,600.000	21,945.520	11,654.480	0.0746		0.0746	0.0	43,080
Jul	WV-4	Weekend	368.000	33,600.000	13,850.040	19,749.960	0.0186		0.0186	0.0	69,701
Aug	WV-4	Weekend	290.000	34,560.000	16,975.360	17,584.640	0.0165		0.0165	0.0	64,267
Sep	WV-4	Weekend	0.000	31,680.000	20,205.360	11,474.640	0.0000		0.0000	0.0	49,824
Oct	WV-4	Weekend	0.000	25,080.000	15,913.360	9,166.640	0.0000		0.0000	0.0	35,392
Nov	WV-4	Weekend	1,239.334	33,600.000	26,412.720	7,187.280	0.1724		0.1724	0.0	24,299
Dec	WV-4	Weekend	18.000	32,640.000	25,461.973	7,178.027	0.0025		0.0025	0.0	30,573
Jan	WV-5	Weekend	0.000	34,560.000	28,621.920	5,938.080	0.0000		0.0000	0.0	24,226
Feb	WV-5	Weekend	0.000	31,680.000	25,938.680	5,741.320	0.0000		0.0000	0.0	24,723
Mar	WV-5	Weekend	0.000	32,640.000	26,574.040	6,065.960	0.0000		0.0000	0.0	23,611
Apr	WV-5	Weekend	310.000	23,880.000	17,345.400	6,534.600	0.0474		0.0462	0.0	27,737
May	WV-5	Weekend	0.000	26,880.000	20,141.240	6,738.760	0.0000		0.0107	0.0	28,267
Jun	WV-5	Weekend	83.333	24,000.000	15,184.800	8,815.200	0.0095		0.0177	0.0	32,914
Jul	WV-5	Weekend	19.333	25,920.000	11,881.960	14,038.040	0.0014		0.0117	0.0	48,909
Aug	WV-5	Weekend	0.000	34,560.000	16,470.040	18,089.960	0.0000		0.0000	0.0	64,879
Sep	WV-5	Weekend	653.333	31,680.000	21,473.960	10,206.040	0.0640		0.0640	0.0	47,380
Oct	WV-5	Weekend	1,643.500	25,080.000	14,468.080	10,611.920	0.1549		0.1549	0.0	35,233
Nov	WV-5	Weekend	678.001	33,600.000	27,525.960	6,074.040	0.1116		0.1116	0.0	19,855
Dec	WV-5	Weekend	373.333	32,640.000	26,138.733	6,501.267	0.0574		0.0574	0.0	30,827
Jan	WYO-1	Weekend	49,099.686	289,440.000	0.000	289,440.000	0.1696		0.1745	4898.0	996,960
Feb	WYO-1	Weekend	19,631.163	265,320.000	0.000	265,320.000	0.0740		0.0765	2284.3	908,520
Mar	WYO-1	Weekend	38,564.683	273,360.000	0.000	273,360.000	0.1411		0.1431	2011.0	996,960
Apr	WYO-1	Weekend	11,923.003	263,980.000	31,825.000	232,155.000	0.0514		0.0533	1769.0	890,648
May	WYO-1	Weekend	15,973.917	289,440.000	0.000	289,440.000	0.0552		0.0575	2345.0	996,960
Jun	WYO-1	Weekend	14,971.000	281,400.000	0.000	281,400.000	0.0532		0.0565	3208.0	964,800
Jul	WYO-1	Weekend	11,727.250	281,400.000	0.000	281,400.000	0.0417		0.0427	1058.0	996,960
Aug	WYO-1	Weekend	3,761.083	289,440.000	0.000	289,440.000	0.0130		0.0146	1582.0	996,960
Sep	WYO-1	Weekend	7,144.500	265,320.000	0.000	265,320.000	0.0269		0.0278	858.0	964,800
Oct	WYO-1	Weekend	622.000	210,045.000	0.000	210,045.000	0.0030		0.0045	1165.0	748,725
Nov	WYO-1	Weekend	18,408.753	281,400.000	0.000	281,400.000	0.0654		0.0660	519.0	964,800
Dec	WYO-1	Weekend	16,149.933	273,360.000	0.000	273,360.000	0.0591		0.0605	1372.0	996,960

85.160

41.931 48.293
90.2242

Month	No. of Outages	Qualifying Blocks	Tot. Hrs.	Unit ID	Lost MWH
Jan	2	-	-	BLN-1	0.0
Feb	4	2	3	BLN-1	0.0
Mar	3	2	-	BLN-1	0.0
Apr	7	2	1	BLN-1	6.0
May	5	4	5	BLN-1	21.9
Jun	10	7	17	BLN-1	30.0
Jul	4	4	2	BLN-1	15.0
Aug	7	3	7	BLN-1	10.0
Sep	10	4	-	BLN-1	0.0
Oct	8	4	4	BLN-1	29.0
Nov	4	4	-	BLN-1	0.0
Dec	6	5	2	BLN-1	7.0
Jan	12	3	8	CHO-4	1733.0
Feb	9	4	10	CHO-4	2252.7
Mar	3	1	4	CHO-4	1359.0
Apr	3	1	2	CHO-4	724.0
May	8	4	11	CHO-4	3269.2
Jun	11	7	20	CHO-4	6664.0
Jul	9	5	13	CHO-4	3899.8
Aug	7	6	18	CHO-4	5038.0
Sep	5	2	6	CHO-4	1912.0
Oct	4	3	12	CHO-4	2318.0
Nov	3	2	7	CHO-4	1284.0
Dec	8	2	7	CHO-4	1871.0
Jan	8	4	18	CRB-1	310.0
Feb	6	2	15	CRB-1	63.0
Mar	14	8	36	CRB-1	143.5
Apr	8	2	13	CRB-1	138.0
May	7	5	19	CRB-1	364.0
Jun	9	5	17	CRB-1	159.0
Jul	6	5	9	CRB-1	240.0
Aug	8	3	11	CRB-1	174.0
Sep	12	8	44	CRB-1	373.0
Oct	6	2	2	CRB-1	53.0
Nov	8	4	33	CRB-1	50.0
Dec	8	3	15	CRB-1	188.0
Jan	10	3	7	CRB-2	411.0
Feb	4	1	3	CRB-2	166.0
Mar	4	1	6	CRB-2	256.0
Apr	2	-	-	CRB-2	0.0
May	10	4	23	CRB-2	487.8
Jun	6	3	9	CRB-2	510.0
Jul	5	4	11	CRB-2	442.0
Aug	12	7	41	CRB-2	654.3
Sep	8	3	7	CRB-2	310.0
Oct	9	6	54	CRB-2	456.0
Nov	6	3	11	CRB-2	522.3
Dec	11	5	28	CRB-2	346.0
Jan	8	4	10	DJ-1	494.0
Feb	-	-	-	DJ-1	0.0
Mar	3	2	4	DJ-1	132.0
Apr	1	1	3	DJ-1	107.0
May	1	1	3	DJ-1	130.0
Jun	8	5	15	DJ-1	478.0
Jul	1	1	3	DJ-1	174.0

Month	No. of Outages	Qualifying Blocks	Tot. Hrs.	Unit ID	Lost MWH
Aug	1	-	-	DJ-1	0.0
Sep	2	1	1	DJ-1	22.0
Oct	9	4	10	DJ-1	519.0
Nov	1	1	-	DJ-1	0.0
Dec	-	-	-	DJ-1	0.0
Jan	1	1	2	DJ-2	87.0
Feb	1	1	4	DJ-2	99.0
Mar	2	2	4	DJ-2	246.0
Apr	5	1	3	DJ-2	95.0
May	1	1	2	DJ-2	88.0
Jun	1	1	4	DJ-2	183.0
Jul	1	1	3	DJ-2	142.0
Aug	1	1	4	DJ-2	144.0
Sep	-	-	-	DJ-2	0.0
Oct	7	3	8	DJ-2	333.0
Nov	-	-	-	DJ-2	0.0
Dec	2	2	5	DJ-2	224.0
Jan	6	5	11	DJ-3	1060.0
Feb	1	1	3	DJ-3	268.0
Mar	15	9	25	DJ-3	3147.0
Apr	8	7	17	DJ-3	1907.0
May	7	6	12	DJ-3	1441.0
Jun	5	3	7	DJ-3	1004.0
Jul	7	4	7	DJ-3	789.0
Aug	6	5	14	DJ-3	1630.0
Sep	4	4	20	DJ-3	914.0
Oct	4	4	8	DJ-3	1067.0
Nov	2	2	5	DJ-3	629.0
Dec	6	4	12	DJ-3	1894.0
Jan	6	5	34	DJ-4	1589.0
Feb	5	5	12	DJ-4	2598.0
Mar	6	3	12	DJ-4	2292.5
Apr	6	2	7	DJ-4	1140.0
May	6	5	20	DJ-4	1699.0
Jun	21	10	34	DJ-4	5862.0
Jul	12	6	28	DJ-4	2550.0
Aug	7	5	13	DJ-4	2666.0
Sep	5	3	8	DJ-4	1109.0
Oct	3	2	6	DJ-4	1078.0
Nov	8	5	15	DJ-4	2519.0
Dec	7	5	35	DJ-4	2249.5
Jan	2	-	-	GAD-1	0.0
Feb	-	-	-	GAD-1	0.0
Mar	2	-	-	GAD-1	0.0
Apr	22	21	62	GAD-1	1964.0
May	24	23	68	GAD-1	2013.0
Jun	33	30	91	GAD-1	2649.0
Jul	86	83	245	GAD-1	6488.0
Aug	69	60	178	GAD-1	4803.0
Sep	28	27	80	GAD-1	2002.0
Oct	23	21	60	GAD-1	1618.0
Nov	3	3	9	GAD-1	274.0
Dec	-	-	-	GAD-1	0.0
Jan	1	-	-	GAD-2	0.0
Feb	4	3	8	GAD-2	384.0

Month	No. of Outages	Qualifying Blocks	Tot. Hrs.	Unit ID	Lost MWH
Mar	-	-	-	GAD-2	0.0
Apr	36	33	100	GAD-2	3740.0
May	31	30	89	GAD-2	3656.0
Jun	40	34	104	GAD-2	4223.0
Jul	98	93	280	GAD-2	9464.0
Aug	68	59	181	GAD-2	6366.1
Sep	24	21	62	GAD-2	2257.0
Oct	24	23	68	GAD-2	2096.0
Nov	3	3	9	GAD-2	301.0
Dec	-	-	-	GAD-2	0.0
Jan	-	-	-	GAD-3	0.0
Feb	1	-	-	GAD-3	0.0
Mar	17	16	47	GAD-3	2714.0
Apr	20	18	57	GAD-3	3119.0
May	20	17	54	GAD-3	2879.0
Jun	61	60	184	GAD-3	10250.0
Jul	112	102	301	GAD-3	15491.0
Aug	88	84	242	GAD-3	12586.0
Sep	33	33	98	GAD-3	4872.0
Oct	29	25	74	GAD-3	3804.0
Nov	3	3	9	GAD-3	501.0
Dec	-	-	-	GAD-3	0.0
Jan	7	5	17	HTG-1	4740.5
Feb	17	6	17	HTG-1	3989.5
Mar	5	2	5	HTG-1	1682.0
Apr	11	3	18	HTG-1	2082.0
May	7	2	7	HTG-1	1938.0
Jun	6	3	6	HTG-1	1642.3
Jul	7	3	9	HTG-1	2638.0
Aug	1	-	-	HTG-1	0.0
Sep	6	2	3	HTG-1	1165.9
Oct	19	7	51	HTG-1	2761.0
Nov	6	4	10	HTG-1	3041.1
Dec	5	1	2	HTG-1	520.0
Jan	12	6	20	HTG-2	5349.0
Feb	6	4	10	HTG-2	2783.0
Mar	7	4	14	HTG-2	3404.0
Apr	4	1	4	HTG-2	1293.0
May	2	1	3	HTG-2	1066.0
Jun	8	6	33	HTG-2	3933.0
Jul	12	4	21	HTG-2	2226.0
Aug	9	5	12	HTG-2	3991.0
Sep	8	3	8	HTG-2	2379.0
Oct	2	-	-	HTG-2	0.0
Nov	6	3	18	HTG-2	1742.0
Dec	8	5	14	HTG-2	3986.0
Jan	1	-	-	HTR-1	0.0
Feb	7	3	19	HTR-1	2035.3
Mar	5	2	6	HTR-1	1162.0
Apr	6	2	6	HTR-1	1784.0
May	6	1	3	HTR-1	873.0
Jun	2	-	-	HTR-1	0.0
Jul	1	-	-	HTR-1	0.0
Aug	11	3	9	HTR-1	2299.0
Sep	9	5	13	HTR-1	3318.0

Month	No. of Outages	Qualifying Blocks	Tot. Hrs.	Unit ID	Lost MWH
Oct	5	1	4	HTR-1	1284.0
Nov	8	3	9	HTR-1	2468.0
Dec	5	1	3	HTR-1	576.0
Jan	5	3	11	HTR-2	2759.0
Feb	4	1	5	HTR-2	799.0
Mar	6	1	2	HTR-2	317.0
Apr	2	-	-	HTR-2	0.0
May	4	1	3	HTR-2	626.0
Jun	8	3	8	HTR-2	1723.0
Jul	3	1	2	HTR-2	219.0
Aug	4	1	4	HTR-2	517.0
Sep	5	2	6	HTR-2	1474.0
Oct	8	2	6	HTR-2	1182.0
Nov	6	-	-	HTR-2	0.0
Dec	4	-	-	HTR-2	0.0
Jan	6	-	-	HTR-3	0.0
Feb	4	1	2	HTR-3	544.0
Mar	5	-	-	HTR-3	0.0
Apr	12	1	3	HTR-3	824.0
May	3	-	-	HTR-3	0.0
Jun	4	1	3	HTR-3	788.0
Jul	4	1	3	HTR-3	727.0
Aug	9	1	3	HTR-3	730.0
Sep	3	1	3	HTR-3	767.0
Oct	7	1	2	HTR-3	410.0
Nov	2	-	-	HTR-3	0.0
Dec	9	-	-	HTR-3	0.0
Jan	7	5	12	JB-1	2475.0
Feb	8	4	11	JB-1	3148.8
Mar	16	6	12	JB-1	2829.0
Apr	9	5	14	JB-1	3675.0
May	1	-	-	JB-1	0.0
Jun	14	7	15	JB-1	4238.0
Jul	8	4	11	JB-1	3008.0
Aug	15	4	10	JB-1	2488.0
Sep	8	5	14	JB-1	3420.0
Oct	4	1	3	JB-1	909.0
Nov	3	1	4	JB-1	895.0
Dec	9	4	10	JB-1	2603.0
Jan	14	4	11	JB-2	3112.0
Feb	10	6	14	JB-2	3375.0
Mar	8	2	4	JB-2	937.0
Apr	22	11	29	JB-2	7204.0
May	13	5	21	JB-2	5280.0
Jun	17	5	13	JB-2	4639.0
Jul	17	5	14	JB-2	3480.0
Aug	15	10	26	JB-2	8110.0
Sep	14	6	19	JB-2	4819.0
Oct	11	4	9	JB-2	2232.0
Nov	10	5	17	JB-2	4319.0
Dec	3	2	5	JB-2	849.0
Jan	6	4	12	JB-3	3673.0
Feb	20	7	22	JB-3	5769.0
Mar	13	8	14	JB-3	4210.0
Apr	11	8	22	JB-3	5719.0

Month	No. of Outages	Qualifying Blocks	Tot. Hrs.	Unit ID	Lost MWH
May	8	4	10	JB-3	2572.0
Jun	24	5	16	JB-3	5524.0
Jul	7	5	17	JB-3	4492.0
Aug	11	7	26	JB-3	7904.0
Sep	5	1	3	JB-3	939.0
Oct	23	11	32	JB-3	10163.0
Nov	9	6	15	JB-3	4034.0
Dec	8	7	20	JB-3	5707.0
Jan	10	7	18	JB-4	5479.0
Feb	8	4	10	JB-4	2725.0
Mar	23	12	34	JB-4	10612.4
Apr	18	4	9	JB-4	2308.0
May	10	4	11	JB-4	3190.2
Jun	18	4	11	JB-4	2880.0
Jul	13	6	14	JB-4	3900.0
Aug	5	3	8	JB-4	2394.8
Sep	4	3	12	JB-4	2796.0
Oct	7	3	8	JB-4	2168.0
Nov	4	3	8	JB-4	2273.2
Dec	15	5	13	JB-4	3838.8
Jan	4	-	-	NTN-1	0.0
Feb	3	1	2	NTN-1	188.0
Mar	3	2	4	NTN-1	288.0
Apr	6	3	8	NTN-1	1012.0
May	3	1	2	NTN-1	124.0
Jun	2	-	-	NTN-1	0.0
Jul	8	1	2	NTN-1	130.0
Aug	2	-	-	NTN-1	0.0
Sep	4	-	-	NTN-1	0.0
Oct	7	1	2	NTN-1	123.0
Nov	3	2	6	NTN-1	680.0
Dec	2	-	-	NTN-1	0.0
Jan	4	2	2	NTN-2	110.0
Feb	2	1	1	NTN-2	117.0
Mar	7	2	5	NTN-2	463.0
Apr	7	1	1	NTN-2	98.0
May	14	7	17	NTN-2	1905.0
Jun	5	3	7	NTN-2	689.0
Jul	5	1	2	NTN-2	178.0
Aug	6	2	5	NTN-2	564.0
Sep	12	6	23	NTN-2	869.5
Oct	7	5	14	NTN-2	1515.0
Nov	9	2	6	NTN-2	750.0
Dec	4	-	-	NTN-2	0.0
Jan	5	2	4	NTN-3	770.0
Feb	11	4	15	NTN-3	2602.0
Mar	6	3	8	NTN-3	1825.0
Apr	5	4	11	NTN-3	1955.0
May	7	3	8	NTN-3	1490.0
Jun	5	3	8	NTN-3	1494.0
Jul	4	1	3	NTN-3	519.0
Aug	2	-	-	NTN-3	0.0
Sep	5	3	8	NTN-3	1270.8
Oct	11	-	-	NTN-3	0.0
Nov	11	1	2	NTN-3	331.0

Month	No. of Outages	Qualifying Blocks	Tot. Hrs.	Unit ID	Lost MWH
Dec	9	1	3	NTN-3	522.0
Jan	18	8	27	WYO-1	4898.0
Feb	12	5	10	WYO-1	2284.3
Mar	7	4	12	WYO-1	2011.0
Apr	8	4	12	WYO-1	1769.0
May	9	7	16	WYO-1	2345.0
Jun	9	7	19	WYO-1	3208.0
Jul	3	2	6	WYO-1	1058.0
Aug	8	3	8	WYO-1	1582.0
Sep	5	2	6	WYO-1	858.0
Oct	2	2	6	WYO-1	1165.0
Nov	5	1	3	WYO-1	519.0
Dec	3	3	9	WYO-1	1372.0
					514098.8

Station Use for 48 Months ending March 31, 2006

Transmissi
on Area Control
Area

Month	Unit ID	Tot.Hr s.	Station Use	Sum of Station	Month												Grand Total			
				Unit ID	JAN	FEB	MAR	APR	MAY	JUN	JUL	AUG	SEP	OCT	NOV	DEC				
APR	BLN-1	39	(40)	BLN-1			(1)	(9)	(40)	(11)	(10)		(25)					(96)	Utah South	East
APR	CHO-4	901	(2,273)	CHO-4	(1,644)	(1,902)	(843)	(2,273)	(1,014)	(1,327)	(1,473)	(478)	(1,487)	(2,106)	(1,257)	(502)		(16,306)	Cholla	East
APR	CRB-1	90	(127)	CRB-1	(675)	(117)	(110)	(127)	(164)	(111)	(103)	(109)	(315)	(372)	(804)	(963)		(3,970)	Utah South	East
APR	CRB-2	162	(207)	CRB-2	(189)	(205)	(38)	(207)	(440)	(189)	(114)	(343)	(306)	(160)	(162)	(110)		(2,463)	Utah South	East
APR	DJ-1	64	(219)	CUR-1						(152)	(259)	(245)	(296)					(952)	Utah South	East
APR	DJ-2	272	(272)	CUR-2					(129)	(234)	(205)	(319)	(304)					(1,191)	Utah South	East
APR	DJ-3	348	(1,992)	DJ-1	(372)			(219)	(232)	(105)	(279)		(8)	(139)	(1)	(18)		(1,373)	Wyoming	East
APR	DJ-4	####	(2,948)	DJ-2	(211)	(1)	(175)	(272)	(253)	(249)	(36)			(418)		(184)		(1,799)	Wyoming	East
APR	GAD-1	####	(1,149)	DJ-3	(833)	(230)	(3,441)	(1,992)	(2,150)	(44)	(840)	(1,715)	(1,169)	(895)	(231)			(14,252)	Wyoming	East
APR	GAD-2	782	(893)	DJ-4	(1,504)	(1,905)	(1,416)	(2,948)	(2,580)	(3,429)	(3,823)	(2,280)	(835)	(951)	(2,434)	(2,094)		(26,199)	Wyoming	East
APR	GAD-3	573	(678)	GAD-1	(774)	(593)	(1,033)	(1,149)	(899)	(1,081)	(2,252)	(2,259)	(915)	(1,286)	(1,162)	(955)		(14,358)	Utah North	East
APR	GAD-4	305	(305)	GAD-2	(776)	(579)	(741)	(893)	(867)	(1,428)	(1,696)	(2,079)	(1,007)	(1,282)	(922)	(872)		(13,142)	Utah North	East
APR	GAD-5	146	(146)	GAD-3	(549)	(469)	(792)	(678)	(933)	(1,882)	(2,104)	(2,261)	(1,571)	(1,044)	(584)	(847)		(13,714)	Utah North	East
APR	GAD-6	198	(211)	GAD-4	(750)	(391)	(536)	(305)	(376)	(242)	(271)	(296)	(420)	(470)	(530)	(676)		(5,263)	Utah North	East
APR	HTG-1	506	(2,948)	GAD-5	(96)	(165)	(164)	(146)	(121)	(151)	(109)	(133)	(149)	(120)	(128)	(140)		(1,622)	Utah North	East
APR	HTG-2	231	(1,370)	GAD-6	(186)	(105)	(209)	(211)	(434)	(424)	(884)	(217)	(574)	(385)	(297)	(171)		(4,097)	Utah North	East
APR	HTR-1	730	(3,895)	HTG-1	(303)	(1,904)	(984)	(2,948)	(1,387)	(630)	(780)	(1,527)	(1,737)	(1,079)	(972)	(794)		(15,045)	Utah South	East
APR	HTR-2	714	(1,895)	HTG-2	(2,425)	(2,464)	(1,926)	(1,370)	(956)	(2,514)	(2,993)	(2,369)	(880)	(2,997)	(4,190)	(2,566)		(27,650)	Utah South	East
APR	HTR-3	570	(4,082)	HTR-1	(394)	(7,334)	(1,884)	(3,895)	(2,116)	(822)	(870)	(5,603)	(2,883)	(2,521)	(4,638)	(3,188)		(36,148)	Utah South	East
APR	LMT-1	20	(20)	HTR-2	(1,264)	(619)	(1,815)	(1,895)	(2,191)	(3,506)	(1,164)	(1,574)	(2,410)	(2,891)	(1,644)	(3,838)		(24,811)	Utah South	East
APR	NTN-1	342	(716)	HTR-3	(1,771)	(422)	(1,189)	(4,082)	(911)	(1,756)	(402)	(3,792)	(1,016)	(845)	(394)	(3,130)		(19,710)	Utah South	East
APR	NTN-2	605	(1,164)	JB-2											(1)			(1)	Jim Bridger	West
APR	NTN-3	97	(165)	LMT-1				(20)	(33)		(127)	(266)	(13)					(459)	Utah North	East
APR	WV-1	23	(23)	NTN-1	(141)	(503)	(113)	(716)	(254)	(101)	(579)	(73)	(294)	(783)	(766)	(529)		(4,852)	Utah North	East
APR	WV-2	21	(21)	NTN-2	(270)	(898)	(601)	(1,164)	(1,758)	(522)	(231)	(299)	(1,342)	(995)	(793)	(612)		(9,485)	Naughton	East
APR	WV-3	41	(41)	NTN-3	(563)	(836)	(679)	(165)	(582)	(404)	(811)	(153)	(666)	(344)	(1,211)	(800)		(7,214)	Naughton	East
APR	WV-4	34	(34)	WV-1	(13)	(37)	(16)	(23)	(17)	(24)	(12)	(14)	(16)	(28)	(60)	(29)		(289)	Utah North	East
APR	WV-5	23	(23)	WV-2	(8)	(9)	(14)	(21)	(16)	(10)	(11)	(10)	(17)	(30)	(42)	(23)		(211)	Utah North	East
MAY	WYO-1	313	(2,318)	WV-3	(15)	(21)	(22)	(41)	(31)	(28)	(24)	(24)	(28)	(23)	(55)	(35)		(347)	Utah North	East
MAY	BLN-1	11	(11)	WV-4	(29)	(9)	(33)	(34)	(28)	(32)	(14)	(37)	(33)	(26)	(79)	(23)		(377)	Utah North	East
MAY	CHO-4	161	(1,014)	WV-5	(18)	(18)	(23)	(23)	(24)	(17)	(8)	(17)	(16)	(12)	(101)	(15)		(292)	Utah North	East
MAY	CRB-1	97	(164)	WYO-1	(2,288)	(2,026)	(2,886)	(2,318)	(2,148)	(1,523)	(754)	(2,128)	(1,238)	(371)	(2,193)	(1,652)		(21,525)	Wyoming	East
MAY	CRB-2	278	(440)	Grand Total	(18,061)	(23,763)	(21,692)	(30,175)	(22,802)	(22,951)	(23,441)	(30,656)	(21,970)	(22,573)	(25,651)	(25,478)		(289,213)		
MAY	CUR-2	127	(129)																	
MAY	DJ-1	170	(232)																	
MAY	DJ-3	863	(2,150)																	
MAY	DJ-4	408	(2,580)																	
MAY	GAD-1	828	(899)																	
MAY	GAD-2	740	(867)																	
MAY	GAD-3	754	(933)	48 Month Ave	(4,515)	(5,941)	(5,423)	(7,544)	(5,701)	(5,738)	(5,860)	(7,664)	(5,493)	(5,643)	(6,413)	(6,370)				
MAY	GAD-4	371	(376)		4,515	5,941	5,423	7,544	5,701	5,738	5,860	7,664	5,493	5,643	6,413	6,370				
MAY	GAD-5	121	(121)																	
MAY	GAD-6	305	(434)		(1,644)	(1,902)	(843)	(2,273)	(1,014)	(1,327)	(1,473)	(478)	(1,487)	(2,106)	(1,257)	(502)		(16,306)	##	Cholla
MAY	HTG-1	220	(1,387)		(974)	(2,237)	(1,393)	(2,045)	(2,594)	(1,027)	(1,621)	(525)	(2,302)	(2,122)	(2,770)	(1,941)		(21,551)	##	Naughton
MAY	HTG-2	129	(956)		(3,214)	(2,396)	(3,583)	(3,544)	(3,779)	(5,319)	(7,512)	(7,613)	(4,759)	(4,706)	(3,960)	(3,786)		(54,171)	##	Utah North
MAY	HTR-1	269	(2,116)		(7,021)	(13,066)	(7,955)	(14,564)	(8,305)	(9,924)	(6,890)	(15,881)	(10,172)	(10,865)	(12,804)	(14,589)		(132,036)	##	Utah South
MAY	HTR-2	889	(2,191)		(5,208)	(4,162)	(7,918)	(7,749)	(7,110)	(5,354)	(5,945)	(6,159)	(3,250)	(2,774)	(4,859)	(4,660)		(65,148)	##	Wyoming
MAY	HTR-3	160	(911)																	
MAY	LMT-1	33	(33)		0	0	0	0	0	0	0	0	0	0	(1)	0		(1)	##	Jim Bridger
MAY	NTN-1	119	(254)																	
MAY	NTN-2	520	(1,758)		9%	8%	4%	8%	4%	6%	6%	2%	7%	9%	5%	2%				
MAY	NTN-3	197	(582)		39%	55%	37%	48%	36%	43%	29%	52%	46%	48%	50%	57%				
MAY	WV-1	17	(17)		29%	18%	37%	26%	31%	23%	25%	20%	15%	12%	19%	18%				
MAY	WV-2	16	(16)																	

Transmissi Control
on Area Area

Station Use for 48 Months ending March 31, 2006

Month	Unit ID	Tot.Hr s.	Station Use
MAY	WV-3	31	(31)
MAY	WV-4	28	(28)
MAY	WV-5	24	(24)
MAY	WYO-1	175	(2,148)
JUN	BLN-1	5	(10)
JUN	CHO-4	105	(1,327)
JUN	CRB-1	84	(111)
JUN	CRB-2	115	(189)
JUN	CUR-1	150	(152)
JUN	CUR-2	234	(234)
JUN	DJ-1	105	(105)
JUN	DJ-2	69	(253)
JUN	DJ-3	41	(44)
JUN	DJ-4	436	(3,429)
JUN	GAD-1	903	(1,081)
JUN	GAD-2	####	(1,428)
JUN	GAD-3	####	(1,882)
JUN	GAD-4	242	(242)
JUN	GAD-5	151	(151)
JUN	GAD-6	311	(424)
JUN	HTG-1	198	(630)
JUN	HTG-2	342	(2,514)
JUN	HTR-1	59	(822)
JUN	HTR-2	512	(3,506)
JUN	HTR-3	241	(1,756)
JUN	NTN-1	32	(101)
JUN	NTN-2	75	(522)
JUN	NTN-3	77	(404)
JUN	WV-1	24	(24)
JUN	WV-2	10	(10)
JUN	WV-3	28	(28)
JUN	WV-4	32	(32)
JUN	WV-5	17	(17)
JUN	WYO-1	118	(1,523)
JUL	CHO-4	142	(1,473)
JUL	CRB-1	83	(103)
JUL	CRB-2	61	(114)
JUL	CUR-1	248	(259)
JUL	CUR-2	205	(205)
JUL	DJ-1	70	(279)
JUL	DJ-2	18	(249)
JUL	DJ-3	123	(840)
JUL	DJ-4	498	(3,823)
JUL	GAD-1	####	(2,252)
JUL	GAD-2	####	(1,696)
JUL	GAD-3	####	(2,104)
JUL	GAD-4	262	(271)
JUL	GAD-5	109	(109)
JUL	GAD-6	464	(884)
JUL	HTG-1	150	(780)
JUL	HTG-2	346	(2,993)
JUL	HTR-1	81	(870)
JUL	HTR-2	133	(1,164)
JUL	HTR-3	49	(402)

Station Service - East - GRID Input	Jan	Feb	Mar	Apr	May	Jun	Jul	Aug	Sep	Oct	Nov	Dec
	4,515	5,941	5,423	7,544	5,701	5,738	5,860	7,664	5,493	5,643	6,413	6,370

Transmissi on Area	Control Area
-----------------------	-----------------

Station Use for 48 Months ending March 31, 2006

Month	Unit ID	Tot.Hr s.	Station Use
JUL	LMT-1	127	(127)
JUL	NTN-1	219	(579)
JUL	NTN-2	43	(231)
JUL	NTN-3	225	(811)
JUL	WV-1	12	(12)
JUL	WV-2	11	(11)
JUL	WV-3	24	(24)
JUL	WV-4	14	(14)
JUL	WV-5	8	(8)
JUL	WYO-1	53	(754)
AUG	CHO-4	32	(478)
AUG	CRB-1	81	(109)
AUG	CRB-2	213	(343)
AUG	CUR-1	234	(245)
AUG	CUR-2	316	(319)
AUG	DJ-2	27	(36)
AUG	DJ-3	166	(1,715)
AUG	DJ-4	241	(2,280)
AUG	GAD-1	####	(2,259)
AUG	GAD-2	####	(2,079)
AUG	GAD-3	####	(2,261)
AUG	GAD-4	288	(296)
AUG	GAD-5	133	(133)
AUG	GAD-6	191	(217)
AUG	HTG-1	512	(1,527)
AUG	HTG-2	260	(2,369)
AUG	HTR-1	496	(5,603)
AUG	HTR-2	151	(1,574)
AUG	HTR-3	362	(3,792)
AUG	LMT-1	266	(266)
AUG	NTN-1	28	(73)
AUG	NTN-2	74	(299)
AUG	NTN-3	33	(153)
AUG	WV-1	14	(14)
AUG	WV-2	10	(10)
AUG	WV-3	24	(24)
AUG	WV-4	37	(37)
AUG	WV-5	17	(17)
AUG	WYO-1	165	(2,128)
SEP	BLN-1	25	(25)
SEP	CHO-4	231	(1,487)
SEP	CRB-1	232	(315)
SEP	CRB-2	191	(306)
SEP	CUR-1	292	(296)
SEP	CUR-2	303	(304)
SEP	DJ-1	8	(8)
SEP	DJ-3	123	(1,169)
SEP	DJ-4	86	(835)
SEP	GAD-1	762	(915)
SEP	GAD-2	842	(1,007)
SEP	GAD-3	####	(1,571)
SEP	GAD-4	416	(420)
SEP	GAD-5	149	(149)
SEP	GAD-6	458	(574)

Transmissi on Area	Control Area
-----------------------	-----------------

Station Use for 48 Months ending March 31, 2006

Month	Unit ID	Tot.Hr s.	Station Use
SEP	HTG-1	531	(1,737)
SEP	HTG-2	108	(880)
SEP	HTR-1	226	(2,883)
SEP	HTR-2	440	(2,410)
SEP	HTR-3	85	(1,016)
SEP	LMT-1	13	(13)
SEP	NTN-1	185	(294)
SEP	NTN-2	414	(1,342)
SEP	NTN-3	463	(666)
SEP	WV-1	15	(16)
SEP	WV-2	16	(17)
SEP	WV-3	27	(28)
SEP	WV-4	32	(33)
SEP	WV-5	15	(16)
SEP	WYO-1	97	(1,238)
OCT	CHO-4	507	(2,106)
OCT	CRB-1	353	(372)
OCT	CRB-2	112	(160)
OCT	DJ-1	139	(139)
OCT	DJ-2	136	(418)
OCT	DJ-3	143	(895)
OCT	DJ-4	131	(951)
OCT	GAD-1	####	(1,286)
OCT	GAD-2	####	(1,282)
OCT	GAD-3	750	(1,044)
OCT	GAD-4	441	(470)
OCT	GAD-5	120	(120)
OCT	GAD-6	320	(385)
OCT	HTG-1	273	(1,079)
OCT	HTG-2	819	(2,997)
OCT	HTR-1	236	(2,521)
OCT	HTR-2	624	(2,891)
OCT	HTR-3	122	(845)
OCT	NTN-1	437	(783)
OCT	NTN-2	404	(995)
OCT	NTN-3	266	(344)
OCT	WV-1	28	(28)
OCT	WV-2	30	(30)
OCT	WV-3	23	(23)
OCT	WV-4	26	(26)
OCT	WV-5	12	(12)
OCT	WYO-1	30	(371)
NOV	CHO-4	238	(1,257)
NOV	CRB-1	722	(804)
NOV	CRB-2	110	(162)
NOV	DJ-1	1	(1)
NOV	DJ-3	29	(231)
NOV	DJ-4	335	(2,434)
NOV	GAD-1	####	(1,162)
NOV	GAD-2	807	(922)
NOV	GAD-3	537	(584)
NOV	GAD-4	529	(530)
NOV	GAD-5	128	(128)
NOV	GAD-6	280	(297)

Transmissi on Area	Control Area
-----------------------	-----------------

Station Use for 48 Months ending March 31, 2006

Month	Unit ID	Tot.Hr s.	Station Use
NOV	HTG-1	246	(972)
NOV	HTG-2	860	(4,190)
NOV	HTR-1	469	(4,638)
NOV	HTR-2	158	(1,644)
NOV	HTR-3	42	(394)
NOV	JB-2	1	(1)
NOV	NTN-1	258	(766)
NOV	NTN-2	324	(793)
NOV	NTN-3	327	(1,211)
NOV	WV-1	60	(60)
NOV	WV-2	42	(42)
NOV	WV-3	55	(55)
NOV	WV-4	77	(79)
NOV	WV-5	65	(101)
NOV	WYO-1	157	(2,193)
DEC	CHO-4	30	(502)
DEC	CRB-1	838	(963)
DEC	CRB-2	65	(110)
DEC	DJ-1	18	(18)
DEC	DJ-2	118	(184)
DEC	DJ-3	134	(712)
DEC	DJ-4	303	(2,094)
DEC	GAD-1	861	(955)
DEC	GAD-2	747	(872)
DEC	GAD-3	660	(847)
DEC	GAD-4	422	(676)
DEC	GAD-5	140	(140)
DEC	GAD-6	171	(171)
DEC	HTG-1	165	(794)
DEC	HTG-2	342	(2,566)
DEC	HTR-1	230	(3,188)
DEC	HTR-2	427	(3,838)
DEC	HTR-3	366	(3,130)
DEC	NTN-1	163	(529)
DEC	NTN-2	199	(612)
DEC	NTN-3	155	(800)
DEC	WV-1	29	(29)
DEC	WV-2	23	(23)
DEC	WV-3	35	(35)
DEC	WV-4	23	(23)
DEC	WV-5	15	(15)
DEC	WYO-1	151	(1,652)
JAN	CHO-4	142	(1,644)
JAN	CRB-1	594	(675)
JAN	CRB-2	125	(189)
JAN	DJ-1	116	(372)
JAN	DJ-2	41	(211)
JAN	DJ-3	228	(833)
JAN	DJ-4	225	(1,504)
JAN	GAD-1	772	(774)
JAN	GAD-2	756	(776)
JAN	GAD-3	520	(549)
JAN	GAD-4	638	(750)
JAN	GAD-5	96	(96)

Transmissi on Area	Control Area
-----------------------	-----------------

Station Use for 48 Months ending March 31, 2006

Month	Unit ID	Tot.Hr s.	Station Use
JAN	GAD-6	141	(186)
JAN	HTG-1	82	(303)
JAN	HTG-2	324	(2,425)
JAN	HTR-1	16	(394)
JAN	HTR-2	177	(1,264)
JAN	HTR-3	192	(1,771)
JAN	NTN-1	45	(141)
JAN	NTN-2	39	(270)
JAN	NTN-3	198	(563)
JAN	WV-1	13	(13)
JAN	WV-2	8	(8)
JAN	WV-3	15	(15)
JAN	WV-4	29	(29)
JAN	WV-5	18	(18)
JAN	WYO-1	161	(2,288)
FEB	BLN-1	1	(1)
FEB	CHO-4	137	(1,902)
FEB	CRB-1	81	(117)
FEB	CRB-2	116	(205)
FEB	DJ-2	1	(1)
FEB	DJ-3	23	(230)
FEB	DJ-4	259	(1,905)
FEB	GAD-1	593	(593)
FEB	GAD-2	552	(579)
FEB	GAD-3	458	(469)
FEB	GAD-4	367	(391)
FEB	GAD-5	165	(165)
FEB	GAD-6	105	(105)
FEB	HTG-1	391	(1,904)
FEB	HTG-2	266	(2,464)
FEB	HTR-1	695	(7,334)
FEB	HTR-2	90	(619)
FEB	HTR-3	35	(422)
FEB	NTN-1	64	(503)
FEB	NTN-2	246	(898)
FEB	NTN-3	195	(836)
FEB	WV-1	26	(37)
FEB	WV-2	9	(9)
FEB	WV-3	21	(21)
FEB	WV-4	9	(9)
FEB	WV-5	18	(18)
FEB	WYO-1	198	(2,026)
MAR	BLN-1	9	(9)
MAR	CHO-4	118	(843)
MAR	CRB-1	74	(110)
MAR	CRB-2	28	(38)
MAR	DJ-2	82	(175)
MAR	DJ-3	591	(3,441)
MAR	DJ-4	303	(1,416)
MAR	GAD-1	967	(1,033)
MAR	GAD-2	680	(741)
MAR	GAD-3	685	(792)
MAR	GAD-4	535	(536)
MAR	GAD-5	164	(164)

<u>Transmissi</u>	<u>Control</u>
<u>on Area</u>	<u>Area</u>

Station Use for 48 Months ending March 31, 2006

<u>Month</u>	<u>Unit ID</u>	<u>Tot.Hr</u>	<u>Station</u>
		<u>s.</u>	<u>Use</u>
MAR	GAD-6	182	(209)
MAR	HTG-1	275	(984)
MAR	HTG-2	223	(1,926)
MAR	HTR-1	177	(1,884)
MAR	HTR-2	180	(1,815)
MAR	HTR-3	120	(1,189)
MAR	NTN-1	41	(113)
MAR	NTN-2	132	(601)
MAR	NTN-3	259	(679)
MAR	WV-1	16	(16)
MAR	WV-2	14	(14)
MAR	WV-3	22	(22)
MAR	WV-4	33	(33)
MAR	WV-5	23	(23)
MAR	WYO-1	275	(2,886)

Period	Unit ID	Period Hrs.	Planned Outage Hrs. for the Period	Planned Outage Hours Per 100 Period Hrs.	Period Years	Average Annual Outage Days
48 Months Ending MAR 2006	BLN-1	35,064	382.001	1.089	4.00	4
48 Months Ending MAR 2006	CC-1	240	0.000	0.000	0.03	-
48 Months Ending MAR 2006	CHO-4	35,064	978.500	2.791	4.00	10
48 Months Ending MAR 2006	COL-3	35,064	1,312.350	3.743	4.00	14
48 Months Ending MAR 2006	COL-4	35,064	1,353.000	3.859	4.00	14
48 Months Ending MAR 2006	CRB-1	35,064	1,410.885	4.024	4.00	15
48 Months Ending MAR 2006	CRB-2	35,064	1,184.833	3.379	4.00	12
48 Months Ending MAR 2006	CRG-1	35,064	1,372.783	3.915	4.00	14
48 Months Ending MAR 2006	CRG-2	35,064	1,308.983	3.733	4.00	14
48 Months Ending MAR 2006	CUR-1	6,762	0.000	0.000	0.77	-
48 Months Ending MAR 2006	CUR-2	7,242	0.000	0.000	0.83	-
48 Months Ending MAR 2006	DJ-1	35,064	1,203.550	3.432	4.00	13
48 Months Ending MAR 2006	DJ-2	35,064	241.817	0.690	4.00	3
48 Months Ending MAR 2006	DJ-3	35,064	922.433	2.631	4.00	10
48 Months Ending MAR 2006	DJ-4	35,064	1,744.149	4.974	4.00	18
48 Months Ending MAR 2006	GAD-1	35,064	1,549.416	4.419	4.00	16
48 Months Ending MAR 2006	GAD-2	35,064	1,267.850	3.616	4.00	13
48 Months Ending MAR 2006	GAD-3	35,064	0.000	0.000	4.00	-
48 Months Ending MAR 2006	GAD-4	32,137	0.000	0.000	3.67	-
48 Months Ending MAR 2006	GAD-5	32,137	0.000	0.000	3.67	-
48 Months Ending MAR 2006	GAD-6	32,137	387.699	1.206	3.67	4
48 Months Ending MAR 2006	HDN-1	35,064	1,119.000	3.191	4.00	12
48 Months Ending MAR 2006	HDN-2	35,064	758.850	2.164	4.00	8
48 Months Ending MAR 2006	HRM-1	35,064	1,119.501	3.193	4.00	12
48 Months Ending MAR 2006	HRM-2	35,064	1,571.983	4.483	4.00	16
48 Months Ending MAR 2006	HTG-1	35,064	1,305.783	3.724	4.00	14
48 Months Ending MAR 2006	HTG-2	35,064	1,569.000	4.475	4.00	16
48 Months Ending MAR 2006	HTR-1	35,064	776.050	2.213	4.00	8
48 Months Ending MAR 2006	HTR-2	35,064	1,728.867	4.931	4.00	18
48 Months Ending MAR 2006	HTR-3	35,064	227.633	0.649	4.00	2
48 Months Ending MAR 2006	JB-1	35,064	1,085.967	3.097	4.00	11
48 Months Ending MAR 2006	JB-2	35,064	1,625.483	4.636	4.00	17
48 Months Ending MAR 2006	JB-3	35,064	1,491.333	4.253	4.00	16
48 Months Ending MAR 2006	JB-4	35,064	1,484.850	4.235	4.00	15
48 Months Ending MAR 2006	LMT-1	35,064	1,740.767	4.965	4.00	18
48 Months Ending MAR 2006	NTN-1	35,064	1,146.267	3.269	4.00	12
48 Months Ending MAR 2006	NTN-2	35,064	1,633.883	4.660	4.00	17
48 Months Ending MAR 2006	NTN-3	35,064	1,461.800	4.169	4.00	15
48 Months Ending MAR 2006	WV-1	33,601	94.166	0.280	3.83	1
48 Months Ending MAR 2006	WV-2	33,601	30.667	0.091	3.83	-
48 Months Ending MAR 2006	WV-3	33,601	75.050	0.223	3.83	1
48 Months Ending MAR 2006	WV-4	33,601	171.833	0.511	3.83	2
48 Months Ending MAR 2006	WV-5	32,137	314.717	0.979	3.67	4
48 Months Ending MAR 2006	WYO-1	35,064	217.350	0.620	4.00	2

Thermal Name	Unit Type	Priority	Start	Value	Duration	Duration Unit	Reurrence	Reurrence		Hour Class
								Unit	Multiplier	
Blundell	T	1	2003/09/26:12:00:00AM	1	11	3	-	-	-	15
Carbon 1	T	1	2003/10/07:12:00:00AM	1	2	3	-	-	-	15
Carbon 2	T	1	2003/10/09:12:00:00AM	1	13	3	-	-	-	15
Cholla 4	T	1	2003/02/22:12:00:00AM	1	8	3	-	-	-	15
Colstrip 3	T	1	2003/09/15:12:00:00AM	1	27	3	-	-	-	15
Colstrip 4	T	1	2003/10/15:12:00:00AM	1	14	3	-	-	-	15
Craig 1	T	1	2003/03/20:12:00:00AM	1	14	3	-	-	-	15
Craig 2	T	1	2003/04/03:12:00:00AM	1	25	3	-	-	-	15
Currant Creek 1	T	1	2003/10/05:12:00:00AM	1	7	3	-	-	-	15
Dave Johnston 1	T	1	2003/09/15:12:00:00AM	1	11	3	-	-	-	15
Dave Johnston 2	T	1	2003/10/15:12:00:00AM	1	4	3	-	-	-	15
Dave Johnston 3	T	1	2003/10/15:12:00:00AM	1	-	3	-	-	-	15
Dave Johnston 4	T	1	2003/09/26:12:00:00AM	1	19	3	-	-	-	15
Gadsby 1	T	1	2003/01/04:12:00:00AM	1	16	3	-	-	-	15
Gadsby 2	T	1	2003/01/20:12:00:00AM	1	13	3	-	-	-	15
Gadsby 3	T	1	2003/02/02:12:00:00AM	1	14	3	-	-	-	15
Gadsby 4	T	1	2003/02/16:12:00:00AM	1	14	3	-	-	-	15
Gadsby 5	T	1	2003/03/02:12:00:00AM	1	14	3	-	-	-	15
Gadsby 6	T	1	2003/03/16:12:00:00AM	1	14	3	-	-	-	15
Hayden 1	T	1	2003/02/22:12:00:00AM	1	12	3	-	-	-	15
Hayden 2	T	1	2003/03/06:12:00:00AM	1	14	3	-	-	-	15
Hermiston 1 Owned	T	1	2003/04/03:12:00:00AM	1	15	3	-	-	-	15
Hermiston 2 Owned	T	1	2003/04/18:12:00:00AM	1	18	3	-	-	-	15
Hunter 1	T	1	2003/03/02:12:00:00AM	1	-	3	-	-	-	15
Hunter 2	T	1	2003/03/02:12:00:00AM	1	20	3	-	-	-	15
Hunter 3	T	1	2003/03/22:12:00:00AM	1	12	3	-	-	-	15
Huntington 1	T	1	2003/09/15:12:00:00AM	1	15	3	-	-	-	15
Huntington 2	T	1	2003/10/15:12:00:00AM	1	18	3	-	-	-	15
Jim Bridger 1	T	1	2003/04/16:12:00:00AM	1	11	3	-	-	-	15
Jim Bridger 2	T	1	2003/04/27:12:00:00AM	1	11	3	-	-	-	15
Jim Bridger 3	T	1	2003/05/08:12:00:00AM	1	15	3	-	-	-	15
Jim Bridger 4	T	1	2003/05/23:12:00:00AM	1	18	3	-	-	-	15
Little Mountain	T	1	2003/06/01:12:00:00AM	1	13	3	-	-	-	15
Naughton 1	T	1	2003/05/03:12:00:00AM	1	12	3	-	-	-	15
Naughton 2	T	1	2003/04/16:12:00:00AM	1	17	3	-	-	-	15
Naughton 3	T	1	2003/04/03:12:00:00AM	1	13	3	-	-	-	15

Thermal Name	Unit Type	Priority	Start	Value	Duration	Duration Unit	Reurrence	Reurrence		Hour Class
								Reurrence Unit	Multiplier	
West Valley 1	T	1	2003/01/20:12:00:00AM	1	14	3	-	-	-	15
West Valley 2	T	1	2003/02/03:12:00:00AM	1	14	3	-	-	-	15
West Valley 3	T	1	2003/02/17:12:00:00AM	1	14	3	-	-	-	15
West Valley 4	T	1	2003/03/03:12:00:00AM	1	14	3	-	-	-	15
West Valley 5	T	1	2003/03/17:12:00:00AM	1	14	3	-	-	-	15
Wyodak	T	1	2003/10/15:12:00:00AM	1	2	3	-	-	-	15
Blundell	T	2	2004/09/24:12:00:00AM	1	11	3	-	-	-	15
Carbon 1	T	2	2004/10/05:12:00:00AM	1	2	3	-	-	-	15
Carbon 2	T	2	2004/10/07:12:00:00AM	1	13	3	-	-	-	15
Cholla 4	T	2	2004/02/21:12:00:00AM	1	8	3	-	-	-	15
Colstrip 3	T	2	2004/09/13:12:00:00AM	1	27	3	-	-	-	15
Colstrip 4	T	2	2004/10/13:12:00:00AM	1	14	3	-	-	-	15
Craig 1	T	2	2004/03/18:12:00:00AM	1	14	3	-	-	-	15
Craig 2	T	2	2004/04/01:12:00:00AM	1	25	3	-	-	-	15
Currant Creek 1	T	2	2004/10/03:12:00:00AM	1	7	3	-	-	-	15
Dave Johnston 1	T	2	2004/09/13:12:00:00AM	1	11	3	-	-	-	15
Dave Johnston 2	T	2	2004/10/13:12:00:00AM	1	4	3	-	-	-	15
Dave Johnston 3	T	2	2004/10/13:12:00:00AM	1	-	3	-	-	-	15
Dave Johnston 4	T	2	2004/09/24:12:00:00AM	1	19	3	-	-	-	15
Gadsby 1	T	2	2004/01/03:12:00:00AM	1	16	3	-	-	-	15
Gadsby 2	T	2	2004/01/19:12:00:00AM	1	13	3	-	-	-	15
Gadsby 3	T	2	2004/02/01:12:00:00AM	1	14	3	-	-	-	15
Gadsby 4	T	2	2004/02/15:12:00:00AM	1	14	3	-	-	-	15
Gadsby 5	T	2	2004/02/29:12:00:00AM	1	14	3	-	-	-	15
Gadsby 6	T	2	2004/03/14:12:00:00AM	1	14	3	-	-	-	15
Hayden 1	T	2	2004/02/21:12:00:00AM	1	12	3	-	-	-	15
Hayden 2	T	2	2004/03/04:12:00:00AM	1	14	3	-	-	-	15
Hermiston 1 Owned	T	2	2004/04/01:12:00:00AM	1	15	3	-	-	-	15
Hermiston 2 Owned	T	2	2004/04/16:12:00:00AM	1	18	3	-	-	-	15
Hunter 1	T	2	2004/02/29:12:00:00AM	1	-	3	-	-	-	15
Hunter 2	T	2	2004/02/29:12:00:00AM	1	20	3	-	-	-	15
Hunter 3	T	2	2004/03/20:12:00:00AM	1	12	3	-	-	-	15
Huntington 1	T	2	2004/09/13:12:00:00AM	1	15	3	-	-	-	15
Huntington 2	T	2	2004/10/13:12:00:00AM	1	18	3	-	-	-	15
Jim Bridger 1	T	2	2004/04/14:12:00:00AM	1	11	3	-	-	-	15
Jim Bridger 2	T	2	2004/04/25:12:00:00AM	1	11	3	-	-	-	15

Thermal Name	Unit Type	Priority	Start	Value	Duration	Duration Unit	Reurrence	Reurrence Unit	Multiplier	Hour Class
Jim Bridger 3	T	2	2004/05/06:12:00:00AM	1	15	3	-	-	-	15
Jim Bridger 4	T	2	2004/05/21:12:00:00AM	1	18	3	-	-	-	15
Little Mountain	T	2	2004/05/30:12:00:00AM	1	13	3	-	-	-	15
Naughton 1	T	2	2004/05/01:12:00:00AM	1	12	3	-	-	-	15
Naughton 2	T	2	2004/04/14:12:00:00AM	1	17	3	-	-	-	15
Naughton 3	T	2	2004/04/01:12:00:00AM	1	13	3	-	-	-	15
West Valley 1	T	2	2004/01/19:12:00:00AM	1	14	3	-	-	-	15
West Valley 2	T	2	2004/02/02:12:00:00AM	1	14	3	-	-	-	15
West Valley 3	T	2	2004/02/16:12:00:00AM	1	14	3	-	-	-	15
West Valley 4	T	2	2004/03/01:12:00:00AM	1	14	3	-	-	-	15
West Valley 5	T	2	2004/03/15:12:00:00AM	1	14	3	-	-	-	15
Wyodak	T	2	2004/10/13:12:00:00AM	1	2	3	-	-	-	15
Blundell	T	3	2005/09/28:12:00:00AM	1	4	3	1	-	40	15
Carbon 1	T	3	2005/10/02:12:00:00AM	1	15	3	1	-	40	15
Carbon 2	T	3	2005/10/17:12:00:00AM	1	12	3	1	-	40	15
Cholla 4	T	3	2005/02/06:12:00:00AM	1	10	3	1	-	40	15
Colstrip 3	T	3	2005/09/15:12:00:00AM	1	14	3	1	-	40	15
Colstrip 4	T	3	2005/10/26:12:00:00AM	1	14	3	1	-	40	15
Craig 1	T	3	2005/02/26:12:00:00AM	1	14	3	1	-	40	15
Craig 2	T	3	2005/03/12:12:00:00AM	1	14	3	1	-	40	15
Currant Creek 1	T	3	2005/10/05:12:00:00AM	1	7	3	1	-	40	15
Dave Johnston 1	T	3	2005/09/15:12:00:00AM	1	13	3	1	-	40	15
Dave Johnston 2	T	3	2005/10/26:12:00:00AM	1	3	3	1	-	40	15
Dave Johnston 3	T	3	2005/10/16:12:00:00AM	1	10	3	1	-	40	15
Dave Johnston 4	T	3	2005/09/28:12:00:00AM	1	18	3	1	-	40	15
Gadsby 1	T	3	2005/01/04:12:00:00AM	1	16	3	1	-	40	15
Gadsby 2	T	3	2005/01/20:12:00:00AM	1	13	3	1	-	40	15
Gadsby 3	T	3	2005/02/02:12:00:00AM	1	-	3	1	-	40	15
Gadsby 4	T	3	2005/02/02:12:00:00AM	1	14	3	1	-	40	15
Gadsby 5	T	3	2005/02/16:12:00:00AM	1	14	3	1	-	40	15
Gadsby 6	T	3	2005/03/02:12:00:00AM	1	14	3	1	-	40	15
Hayden 1	T	3	2005/02/06:12:00:00AM	1	12	3	1	-	40	15
Hayden 2	T	3	2005/02/18:12:00:00AM	1	8	3	1	-	40	15
Hermiston 1 Owned	T	3	2005/03/16:12:00:00AM	1	12	3	1	-	40	15
Hermiston 2 Owned	T	3	2005/03/28:12:00:00AM	1	16	3	1	-	40	15
Hunter 1	T	3	2005/02/16:12:00:00AM	1	8	3	1	-	40	15

Thermal Name	Unit Type	Priority	Start	Value	Duration	Duration Unit	Reurrence	Reurrence Unit	Multiplier	Hour Class
Hunter 2	T	3	2005/02/24:12:00:00AM	1	18	3	1	-	40	15
Hunter 3	T	3	2005/03/14:12:00:00AM	1	2	3	1	-	40	15
Huntington 1	T	3	2005/09/15:12:00:00AM	1	14	3	1	-	40	15
Huntington 2	T	3	2005/10/26:12:00:00AM	1	16	3	1	-	40	15
Jim Bridger 1	T	3	2005/03/31:12:00:00AM	1	11	3	1	-	40	15
Jim Bridger 2	T	3	2005/04/11:12:00:00AM	1	17	3	1	-	40	15
Jim Bridger 3	T	3	2005/04/28:12:00:00AM	1	16	3	1	-	40	15
Jim Bridger 4	T	3	2005/05/14:12:00:00AM	1	15	3	1	-	40	15
Little Mountain	T	3	2005/06/01:12:00:00AM	1	18	3	1	-	40	15
Naughton 1	T	3	2005/04/17:12:00:00AM	1	12	3	1	-	40	15
Naughton 2	T	3	2005/03/31:12:00:00AM	1	17	3	1	-	40	15
Naughton 3	T	3	2005/03/16:12:00:00AM	1	15	3	1	-	40	15
West Valley 1	T	3	2005/01/20:12:00:00AM	1	14	3	1	-	40	15
West Valley 2	T	3	2005/02/03:12:00:00AM	1	14	3	1	-	40	15
West Valley 3	T	3	2005/02/17:12:00:00AM	1	14	3	1	-	40	15
West Valley 4	T	3	2005/03/03:12:00:00AM	1	14	3	1	-	40	15
West Valley 5	T	3	2005/03/17:12:00:00AM	1	14	3	1	-	40	15
Wyodak	T	3	2005/10/30:12:00:00AM	1	2	3	1	-	40	15
Gadsby 1	T	101	2000/01/01:10:00:00PM	1	9	4	1	3	9,999	15
Gadsby 2	T	101	2000/01/01:10:00:00PM	1	9	4	1	3	9,999	15
Gadsby 3	T	101	2000/01/01:10:00:00PM	1	9	4	1	3	9,999	15
Gadsby 4	T	101	2000/01/01:10:00:00PM	1	9	4	1	3	9,999	15
Gadsby 5	T	101	2000/01/01:10:00:00PM	1	9	4	1	3	9,999	15
Gadsby 6	T	101	2000/01/01:10:00:00PM	1	9	4	1	3	9,999	15
West Valley 1	T	101	2000/01/01:10:00:00PM	1	9	4	1	3	9,999	15
West Valley 2	T	101	2000/01/01:10:00:00PM	1	9	4	1	3	9,999	15
West Valley 3	T	101	2000/01/01:10:00:00PM	1	9	4	1	3	9,999	15
West Valley 4	T	101	2000/01/01:10:00:00PM	1	9	4	1	3	9,999	15
West Valley 5	T	101	2000/01/01:10:00:00PM	1	9	4	1	3	9,999	15
Currant Creek 1	T	101	2005/06/30:12:00:00AM	1	6	4	1	3	243	15
Lake Side	T	1	2003/10/12:12:00:00AM	1	7	3	-	-	-	15
Lake Side	T	2	2004/10/10:12:00:00AM	1	7	3	-	-	-	15
Lake Side	T	3	2005/10/09:12:00:00AM	1	7	3	1	-	40	15
UAMPS p296212	T	1	2000/01/01:12:00:00AM	1	1	4	-	-	-	15
APGI Rocky Reach	H	1	2000/01/01:12:00:00AM	1	1	4	-	-	-	15
Bear	H	1	2000/01/01:12:00:00AM	1	1	4	-	-	-	15

Thermal Name	Unit Type	Priority	Start	Value	Duration	Duration Unit	Reurrence	Reurrence		Hour Class
								Reurrence Unit	Multiplier	
Bend	H	1	2000/01/01:12:00:00AM	1	1	4	-	-	-	15
Big Fork	H	1	2000/01/01:12:00:00AM	1	1	4	-	-	-	15
Chelan - Rocky Reach	H	1	2000/01/01:12:00:00AM	1	1	4	-	-	-	15
Clearwater 1	H	1	2000/01/01:12:00:00AM	1	1	4	-	-	-	15
Clearwater 2	H	1	2000/01/01:12:00:00AM	1	1	4	-	-	-	15
Condit	H	1	2000/01/01:12:00:00AM	1	1	4	-	-	-	15
Copco 1	H	1	2000/01/01:12:00:00AM	1	1	4	-	-	-	15
Copco 2	H	1	2000/01/01:12:00:00AM	1	1	4	-	-	-	15
Douglas - Wells	H	1	2000/01/01:12:00:00AM	1	1	4	-	-	-	15
Eagle Point	H	1	2000/01/01:12:00:00AM	1	1	4	-	-	-	15
East	H	1	2000/01/01:12:00:00AM	1	1	4	-	-	-	15
East Side	H	1	2000/01/01:12:00:00AM	1	1	4	-	-	-	15
Fall Creek	H	1	2000/01/01:12:00:00AM	1	1	4	-	-	-	15
Fish Creek	H	1	2000/01/01:12:00:00AM	1	1	4	-	-	-	15
Grant - Priest Rapids	H	1	2000/01/01:12:00:00AM	1	1	4	-	-	-	15
Grant - Wanapum	H	1	2000/01/01:12:00:00AM	1	1	4	-	-	-	15
Grant Priest Rapids Development	H	1	2000/01/01:12:00:00AM	1	1	4	-	-	-	15
Grant Reasonable Portion	H	1	2000/01/01:12:00:00AM	1	1	4	-	-	-	15
Grant Wanapum Development	H	1	2000/01/01:12:00:00AM	1	1	4	-	-	-	15
Grant Meaningful Priority - Priest Rapids	H	1	2000/01/01:12:00:00AM	1	1	4	-	-	-	15
Grant Meaningful Priority - Wanapum	H	1	2000/01/01:12:00:00AM	1	1	4	-	-	-	15
Iron Gate	H	1	2000/01/01:12:00:00AM	1	1	4	-	-	-	15
JCBoyle	H	1	2000/01/01:12:00:00AM	1	1	4	-	-	-	15
Lemolo 1	H	1	2000/01/01:12:00:00AM	1	1	4	-	-	-	15
Lemolo 2	H	1	2000/01/01:12:00:00AM	1	1	4	-	-	-	15
Merwin	H	1	2000/01/01:12:00:00AM	1	1	4	-	-	-	15
Powerdale	H	1	2000/01/01:12:00:00AM	1	1	4	-	-	-	15
Prospect 1	H	1	2000/01/01:12:00:00AM	1	1	4	-	-	-	15
Prospect 2	H	1	2000/01/01:12:00:00AM	1	1	4	-	-	-	15
Prospect 3	H	1	2000/01/01:12:00:00AM	1	1	4	-	-	-	15
Prospect 4	H	1	2000/01/01:12:00:00AM	1	1	4	-	-	-	15
Slide Creek	H	1	2000/01/01:12:00:00AM	1	1	4	-	-	-	15
Soda Springs	H	1	2000/01/01:12:00:00AM	1	1	4	-	-	-	15
Swift 1	H	1	2000/01/01:12:00:00AM	1	1	4	-	-	-	15
Swift 2	H	1	2000/01/01:12:00:00AM	1	1	4	-	-	-	15
Swift 2	H	2	2002/04/21:07:00:00AM	1	4	-	-	-	-	15

Thermal Name	Unit Type	Priority	Start	Value	Duration	Duration Unit	Reurrence	Reurrence Unit	Multiplier	Hour Class
Swift 2	H	6	2006/01/01:12:00:00AM	1	9	1	-	-	-	15
Toketee	H	1	2000/01/01:12:00:00AM	1	1	4	-	-	-	15
Wallowa Falls	H	1	2000/01/01:12:00:00AM	1	1	4	-	-	-	15
West Side	H	1	2000/01/01:12:00:00AM	1	1	4	-	-	-	15
Yale	H	1	2000/01/01:12:00:00AM	1	1	4	-	-	-	15

		Sat 1/1/2005		731		
	<u>Unit</u>	<u>MW</u>	<u>Start Date</u>	<u>days</u>	<u>End Date</u>	
PCE	Blundell	23	Wed 09/28/05	4	Sat	10/01/05
PCE	Carbon	1	70 Sun 10/02/05	15	Sun	10/16/05
PCE	Carbon	2	105 Mon 10/17/05	12	Fri	10/28/05
PCE	Cholla	380	Sun 02/06/05	10	Tue	02/15/05
PCW	Colstrip	3	74 Thu 09/15/05	14	Wed	09/28/05
PCW	Colstrip	4	74 Wed 10/26/05	14	Tue	11/08/05
PCE	Craig	1	83 Sat 02/26/05	14	Fri	03/11/05
PCE	Craig	2	83 Sat 03/12/05	14	Fri	03/25/05
PCE	Currant Creek CCCT	1	420 Wed 10/05/05	7	Tue	10/11/05
PCE	Dave Johnston	1	106 Thu 09/15/05	13	Tue	09/27/05
PCE	Dave Johnston	2	106 Wed 10/26/05	3	Fri	10/28/05
PCE	Dave Johnston	3	230 Sun 10/16/05	10	Tue	10/25/05
PCE	Dave Johnston	4	330 Wed 09/28/05	18	Sat	10/15/05
PCE	Gadsby	1	60 Tue 01/04/05	16	Wed	01/19/05
PCE	Gadsby	2	75 Thu 01/20/05	13	Tue	02/01/05
PCE	Gadsby	3	100 Wed 02/02/05	0	Tue	02/01/05
PCE	Gadsby	4	40 Wed 02/02/05	14	Tue	02/15/05
PCE	Gadsby	5	40 Wed 02/16/05	14	Tue	03/01/05
PCE	Gadsby	6	40 Wed 03/02/05	14	Tue	03/15/05
PCE	Hayden	1	45 Sun 02/06/05	12	Thu	02/17/05
PCE	Hayden	2	33 Fri 02/18/05	8	Fri	02/25/05
PCW	Hermiston	1	237 Wed 03/16/05	12	Sun	03/27/05
PCW	Hermiston	2	237 Mon 03/28/05	16	Tue	04/12/05
PCE	Hunter	1	389 Wed 02/16/05	8	Wed	02/23/05
PCE	Hunter	2	250 Thu 02/24/05	18	Sun	03/13/05
PCE	Hunter	3	460 Mon 03/14/05	2	Tue	03/15/05
PCE	Huntington	1	420 Thu 09/15/05	14	Wed	09/28/05
PCE	Huntington	2	425 Wed 10/26/05	16	Thu	11/10/05
PCW	Jim Bridger	1	353 Thu 03/31/05	11	Sun	04/10/05
PCW	Jim Bridger	2	353 Mon 04/11/05	17	Wed	04/27/05
PCW	Jim Bridger	3	347 Thu 04/28/05	16	Fri	05/13/05
PCW	Jim Bridger	4	347 Sat 05/14/05	15	Sat	05/28/05
PCE	Little Mountain	13	Wed 06/01/05	18	Sat	06/18/05
PCE	Naughton	1	160 Sun 04/17/05	12	Thu	04/28/05
PCE	Naughton	2	210 Thu 03/31/05	17	Sat	04/16/05
PCE	Naughton	3	305 Wed 03/16/05	15	Wed	03/30/05
PCE	West Valley	1	40 Thu 01/20/05	14	Wed	02/02/05
PCE	West Valley	2	40 Thu 02/03/05	14	Wed	02/16/05
PCE	West Valley	3	40 Thu 02/17/05	14	Wed	03/02/05
PCE	West Valley	4	40 Thu 03/03/05	14	Wed	03/16/05
PCE	West Valley	5	40 Thu 03/17/05	14	Wed	03/30/05
PCE	Wyodak	268	Sun 10/30/05	2	Mon	10/31/05
PCE	Bonanza	390	Fri 05/13/05	0	Thu	05/12/05
PCE	Hunter-dgt	1	104 Thu 02/24/05	18	Sun	03/13/05
PCW	James River	52	Wed 04/27/05	0	Tue	04/26/05
PCE	Redding San Juan	21	Tue 10/18/05	14	Mon	10/31/05
PCW	River Road	248	Wed 04/13/05	14	Tue	04/26/05
PCE	SunnySide	53	Tue 03/08/05	14	Mon	03/21/05
PCE	SunnySide	53	Wed 10/05/05	7	Tue	10/11/05

lost generation (GWh) 3.2% 2,322