

Appendix D
Demand Side Management
2023 WA IRP

Appendix Demand Side Management (DSM)

Table of Contents

Ramp Rates

Residential DSM Forecast Highlights

Commercial DSM Forecast Highlights

Industrial DSM Forecast Highlights

Alternative DSM Scenarios

Residential Equipment

Residential Non-Equipment

Commercial Equipment

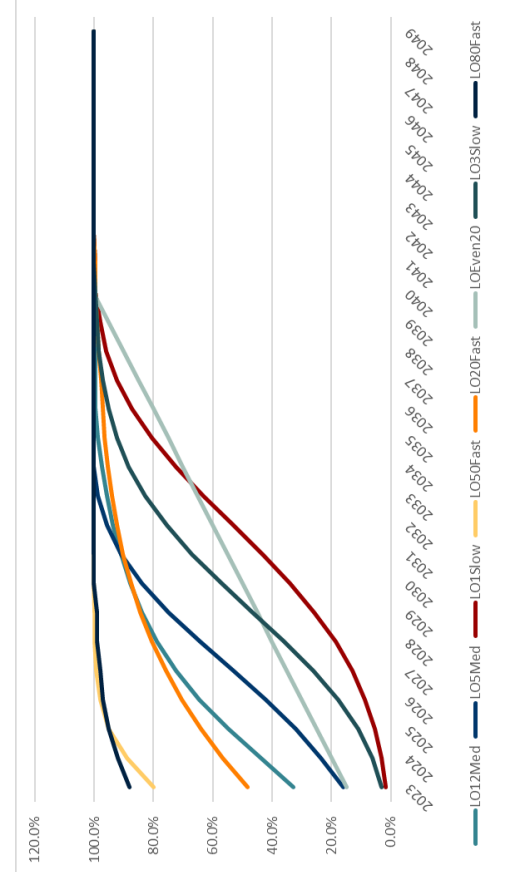
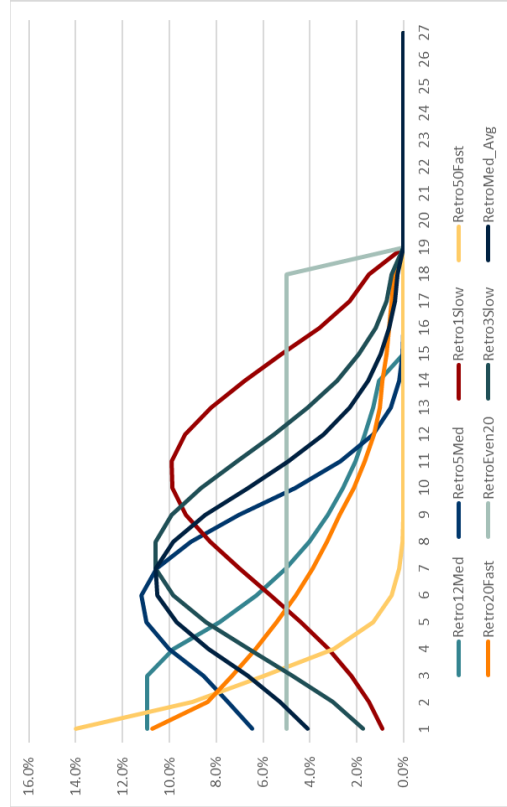
Commercial Non-Equipment

Industrial Equipment

Industrial Non-Equipment

Key	2023	2024	2025	2026	2027	2028	2029	2030	2031	2032	2033	2034	2035	2036	2037	2038	2039	2040	2041	2042	2043	2044	2045	2046	2047	2048	2049			
LO12Med	32.8%	43.7%	54.7%	64.5%	72.4%	78.7%	83.7%	87.8%	91.0%	93.6%	95.6%	97.3%	98.6%	99.7%	99.7%	99.7%	99.7%	99.7%	99.7%	100.0%	100.0%	100.0%	100.0%	100.0%	100.0%	100.0%	100.0%	100.0%		
LO5Med	16.0%	23.5%	32.1%	42.1%	53.1%	64.3%	74.8%	83.9%	90.9%	95.8%	98.7%	100.0%	100.0%	100.0%	100.0%	100.0%	100.0%	100.0%	100.0%	100.0%	100.0%	100.0%	100.0%	100.0%	100.0%	100.0%	100.0%	100.0%	100.0%	
LO1Slow	1.7%	3.2%	5.4%	8.6%	13.0%	18.7%	25.7%	34.0%	43.3%	53.1%	61.1%	72.4%	80.6%	87.3%	92.3%	96.0%	98.0%	99.6%	99.6%	100.0%	100.0%	100.0%	100.0%	100.0%	100.0%	100.0%	100.0%	100.0%	100.0%	
LO50Fast	80.0%	89.0%	95.0%	97.9%	99.3%	99.8%	100.0%	100.0%	100.0%	100.0%	100.0%	100.0%	100.0%	100.0%	100.0%	100.0%	100.0%	100.0%	100.0%	100.0%	100.0%	100.0%	100.0%	100.0%	100.0%	100.0%	100.0%	100.0%	100.0%	
LO20Fast	48.4%	56.7%	64.0%	70.4%	75.8%	80.4%	84.3%	87.6%	90.3%	92.4%	94.1%	95.4%	96.4%	97.1%	97.7%	98.4%	98.9%	99.6%	99.6%	100.0%	100.0%	100.0%	100.0%	100.0%	100.0%	100.0%	100.0%	100.0%	100.0%	
LOEven20	15.0%	20.0%	25.0%	30.0%	35.0%	40.0%	45.0%	50.0%	55.0%	60.0%	65.0%	70.0%	75.0%	80.0%	85.0%	90.0%	95.0%	100.0%	100.0%	100.0%	100.0%	100.0%	100.0%	100.0%	100.0%	100.0%	100.0%	100.0%	100.0%	
LO3Slow	3.2%	6.2%	10.9%	17.6%	26.0%	35.8%	46.4%	57.0%	66.9%	75.6%	82.7%	88.3%	92.3%	95.2%	97.1%	98.3%	99.1%	99.6%	100.0%	100.0%	100.0%	100.0%	100.0%	100.0%	100.0%	100.0%	100.0%	100.0%	100.0%	
LO8Fast	88.0%	92.0%	95.0%	97.0%	98.0%	99.0%	99.0%	100.0%	100.0%	100.0%	100.0%	100.0%	100.0%	100.0%	100.0%	100.0%	100.0%	100.0%	100.0%	100.0%	100.0%	100.0%	100.0%	100.0%	100.0%	100.0%	100.0%	100.0%	100.0%	
Retro2Med	10.9%	10.9%	10.9%	9.8%	7.9%	6.3%	5.0%	4.0%	3.2%	2.6%	2.1%	1.7%	1.3%	1.1%	0.0%	0.0%	0.0%	0.0%	0.0%	0.0%	0.0%	0.0%	0.0%	0.0%	0.0%	0.0%	0.0%	0.0%	0.0%	
Retro5Med	6.5%	7.5%	8.6%	10.0%	11.0%	11.2%	10.6%	9.1%	7.0%	4.7%	2.7%	1.3%	0.8%	0.2%	0.1%	0.0%	0.0%	0.0%	0.0%	0.0%	0.0%	0.0%	0.0%	0.0%	0.0%	0.0%	0.0%	0.0%	0.0%	
RetroSlow	0.9%	1.5%	2.2%	3.2%	4.4%	5.7%	7.0%	8.3%	9.3%	9.9%	9.9%	9.4%	8.2%	6.8%	5.2%	3.6%	2.3%	1.5%	0.0%	0.0%	0.0%	0.0%	0.0%	0.0%	0.0%	0.0%	0.0%	0.0%	0.0%	0.0%
Retro50Fast	14.0%	9.0%	6.0%	3.0%	1.3%	0.5%	0.2%	0.1%	0.0%	0.0%	0.0%	0.0%	0.0%	0.0%	0.0%	0.0%	0.0%	0.0%	0.0%	0.0%	0.0%	0.0%	0.0%	0.0%	0.0%	0.0%	0.0%	0.0%	0.0%	0.0%
Retro20Fast	10.7%	8.4%	6.3%	3.0%	1.3%	0.5%	0.2%	0.1%	0.0%	0.0%	0.0%	0.0%	0.0%	0.0%	0.0%	0.0%	0.0%	0.0%	0.0%	0.0%	0.0%	0.0%	0.0%	0.0%	0.0%	0.0%	0.0%	0.0%	0.0%	0.0%
RetroEven20	5.0%	5.0%	5.0%	5.0%	5.0%	5.0%	5.0%	5.0%	5.0%	5.0%	5.0%	5.0%	5.0%	5.0%	5.0%	5.0%	5.0%	5.0%	5.0%	5.0%	5.0%	5.0%	5.0%	5.0%	5.0%	5.0%	5.0%	5.0%	5.0%	5.0%
Retro3Slow	1.7%	3.0%	4.7%	6.6%	8.4%	9.8%	10.6%	10.6%	9.8%	8.7%	7.1%	5.5%	4.1%	2.9%	1.9%	1.2%	0.7%	0.5%	0.0%	0.0%	0.0%	0.0%	0.0%	0.0%	0.0%	0.0%	0.0%	0.0%	0.0%	0.0%
RetroMed_Avg	4.1%	5.3%	6.6%	8.3%	9.7%	10.5%	10.6%	9.8%	8.5%	6.7%	4.9%	3.4%	2.3%	1.5%	1.0%	0.6%	0.4%	0.3%	0.0%	0.0%	0.0%	0.0%	0.0%	0.0%	0.0%	0.0%	0.0%	0.0%	0.0%	0.0%

Ramp Rates from the NWPCC's 8th Plan



Residential DSM Highlights

Summary of Energy Savings (thousand therms), Selected Years	2023	2024	2025	2030	2035	2040	2045
Reference Baseline	243,965	247,595	247,199	253,812	259,582	266,336	272,292
Cumulative Savings (thousand therms)							
Achievable Economic TRC Potential	125	255	424	1,784	3,285	4,270	4,416
Achievable Economic UCT Potential	584	723	1,246	5,183	9,526	12,153	12,290
Achievable Technical Potential	767	1,115	1,865	7,480	13,687	17,372	16,968
Technical Potential	3,303	4,846	7,404	21,146	32,873	40,339	42,598
Energy Savings (% of Baseline)							
Achievable Economic TRC Potential	0.1%	0.1%	0.2%	0.7%	1.3%	1.6%	1.6%
Achievable Economic UCT Potential	0.2%	0.3%	0.5%	2.0%	3.7%	4.6%	4.5%
Achievable Technical Potential	0.3%	0.5%	0.8%	2.9%	5.3%	6.5%	6.2%
Technical Potential	1.4%	2.0%	3.0%	8.3%	12.7%	15.1%	15.6%
Incremental Savings (thousand therms)							
Achievable Economic TRC Potential	128	144	176	339	285	194	6
Achievable Economic UCT Potential	596	466	548	970	889	667	103
Achievable Technical Potential	786	680	795	1,411	1,291	903	105
Technical Potential	3,383	2,654	2,722	3,061	2,161	1,862	373

Commercial DSM Forecast Highlights

Summary of Energy Savings (thousand therms), Selected Years	2023	2024	2025	2030	2035	2040	2045
Reference Baseline	243,965	247,595	247,199	253,812	259,582	266,336	272,292
Cumulative Savings (thousand therms)							
Achievable Economic TRC Potential	363	836	1,441	6,453	11,253	14,155	15,144
Achievable Economic UCT Potential	378	873	1,492	6,497	11,294	14,426	15,585
Achievable Technical Potential	1,157	2,475	3,874	11,760	17,586	20,586	21,070
Technical Potential	2,338	4,661	6,943	18,372	25,225	28,582	29,740
Energy Savings (% of Baseline)							
Achievable Economic TRC Potential	0.1%	0.3%	0.6%	2.5%	4.3%	5.3%	5.6%
Achievable Economic UCT Potential	0.2%	0.4%	0.6%	2.6%	4.4%	5.4%	5.7%
Achievable Technical Potential	0.5%	1.0%	1.6%	4.6%	6.8%	7.7%	7.7%
Technical Potential	1.0%	1.9%	2.8%	7.2%	9.7%	10.7%	10.9%
Incremental Savings (thousand therms)							
Achievable Economic TRC Potential	361	466	624	1,264	1,142	1,040	1,295
Achievable Economic UCT Potential	377	485	638	1,241	1,153	1,068	1,204
Achievable Technical Potential	1,386	1,493	1,667	1,966	1,599	1,401	1,765
Technical Potential	2,332	2,280	2,425	2,550	2,011	1,777	2,384

Industrial DSM Forecast Highlights

Summary of Energy Savings (thousand therms), Selected Years	2023	2024	2025	2030	2035	2040	2045
Reference Baseline	243,965	247,595	247,199	253,812	259,582	266,336	272,292
Cumulative Savings (thousand therms)							
Achievable Economic TRC Potential	94	204	321	927	1,326	1,534	1,518
Achievable Economic UCT Potential	81	168	256	697	1,082	1,322	1,333
Achievable Technical Potential	121	258	405	1,130	1,595	1,818	1,792
Technical Potential	158	334	515	1,391	1,927	2,172	2,155
Energy Savings (% of Baseline)							
Achievable Economic TRC Potential	0.0%	0.1%	0.1%	0.4%	0.5%	0.6%	0.6%
Achievable Economic UCT Potential	0.0%	0.1%	0.1%	0.3%	0.4%	0.5%	0.5%
Achievable Technical Potential	0.0%	0.1%	0.2%	0.4%	0.6%	0.7%	0.7%
Technical Potential	0.1%	0.1%	0.2%	0.5%	0.7%	0.8%	0.8%
Incremental Savings (thousand therms)							
Achievable Economic TRC Potential	95	110	121	123	86	68	60
Achievable Economic UCT Potential	81	87	89	93	83	71	63
Achievable Technical Potential	125	143	154	149	102	82	72
Technical Potential	160	179	187	176	119	97	86

Residential

Scenario B: RNG Future Avoided Costs

Summary of Energy Savings (therms), Selected Years	2023	2024	2025	2030	2035	2040	2045
Reference Baseline	243,965	247,595	247,199	253,812	259,582	266,336	272,292
Cumulative Savings (therms)							
Achievable Economic TRC Potential	276	593	961	3,815	7,101	9,432	9,602
Achievable Economic UCT Potential	1,020	1,358	2,107	7,779	14,357	18,203	17,924
Achievable Technical Potential	1,104	1,534	2,380	8,725	16,029	20,283	19,760
Technical Potential	3,368	4,925	7,529	21,508	33,413	38,283	39,483
Energy Savings (% of Baseline)							
Achievable Economic TRC Potential	0.1%	0.2%	0.4%	1.5%	2.7%	3.5%	3.5%
Achievable Economic UCT Potential	0.4%	0.5%	0.9%	3.1%	5.5%	6.8%	6.6%
Achievable Technical Potential	0.5%	0.6%	1.0%	3.4%	6.2%	7.6%	7.3%
Technical Potential	1.4%	2.0%	3.0%	8.5%	12.9%	14.4%	14.5%
Incremental Savings (therms)							
Achievable Economic TRC Potential	284	326	389	723	671	496	33
Achievable Economic UCT Potential	1,043	672	797	1,433	1,345	962	155
Achievable Technical Potential	1,131	767	903	1,609	1,506	1,054	155
Technical Potential	3,450	2,703	2,773	3,115	2,206	1,243	374

Scenario C: RNG Future Avoided Costs Plus Municipal Gas Bans

Summary of Energy Savings (therms), Selected Years	2023	2024	2025	2030	2035	2040	2045
Reference Baseline	243,814	247,281	246,725	252,549	257,553	263,559	268,795
Cumulative Savings (therms)							
Achievable Economic TRC Potential	122	245	407	1,692	3,085	3,981	4,074
Achievable Economic UCT Potential	1,399	1,526	2,051	6,018	10,439	13,167	13,138
Achievable Technical Potential	1,916	2,263	3,028	8,777	15,167	19,006	18,430
Technical Potential	8,859	10,416	13,020	26,999	38,904	46,497	48,789
Energy Savings (% of Baseline)							
Achievable Economic TRC Potential	0.1%	0.1%	0.2%	0.7%	1.2%	1.5%	1.5%
Achievable Economic UCT Potential	0.6%	0.6%	0.8%	2.4%	4.1%	5.0%	4.9%
Achievable Technical Potential	0.8%	0.9%	1.2%	3.5%	5.9%	7.2%	6.9%
Technical Potential	3.6%	4.2%	5.3%	10.7%	15.1%	17.6%	18.2%
Incremental Savings (therms)							
Achievable Economic TRC Potential	125	139	169	318	265	177	3
Achievable Economic UCT Potential	594	464	550	986	902	677	101
Achievable Technical Potential	794	689	811	1,455	1,326	925	103
Technical Potential	3,450	2,703	2,773	3,115	2,206	1,900	374

Commercial

Scenario B: RNG Future Avoided Costs

Summary of Energy Savings (therms), Selected Years	2023	2024	2025	2030	2035	2040	2045
Reference Baseline	243,965	247,595	247,199	253,812	259,582	266,336	272,292
Cumulative Savings (therms)							
Achievable Economic TRC Potential	363	836	1,441	6,453	11,253	14,155	15,144
Achievable Economic UCT Potential	378	873	1,492	6,497	11,294	14,426	15,585
Achievable Technical Potential	1,157	2,475	3,874	11,760	17,586	20,586	21,070
Technical Potential	2,338	4,661	6,943	18,372	25,225	28,582	29,740
Energy Savings (% of Baseline)							
Achievable Economic TRC Potential	0.1%	0.3%	0.6%	2.5%	4.3%	5.3%	5.6%
Achievable Economic UCT Potential	0.2%	0.4%	0.6%	2.6%	4.4%	5.4%	5.7%
Achievable Technical Potential	0.5%	1.0%	1.6%	4.6%	6.8%	7.7%	7.7%
Technical Potential	1.0%	1.9%	2.8%	7.2%	9.7%	10.7%	10.9%
Incremental Savings (therms)							
Achievable Economic TRC Potential	361	466	624	1,264	1,142	1,040	1,295
Achievable Economic UCT Potential	377	485	638	1,241	1,153	1,068	1,204
Achievable Technical Potential	1,386	1,493	1,667	1,966	1,599	1,401	1,765
Technical Potential	2,332	2,280	2,425	2,550	2,011	1,777	2,384

Scenario C: RNG Future Avoided Costs Plus Municipal Gas Bans

Summary of Energy Savings (therms), Selected Years	2023	2024	2025	2030	2035	2040	2045
Reference Baseline	243,814	247,281	246,725	252,549	257,553	263,559	268,795
Cumulative Savings (therms)							
Achievable Economic TRC Potential	359	828	1,426	6,435	11,156	13,959	14,879
Achievable Economic UCT Potential	872	1,365	1,982	6,945	11,656	14,691	15,784
Achievable Technical Potential	3,111	4,428	5,815	13,623	19,347	22,246	22,664
Technical Potential	6,819	9,107	11,353	22,603	29,305	32,525	33,551
Energy Savings (% of Baseline)							
Achievable Economic TRC Potential	0.1%	0.3%	0.6%	2.5%	4.3%	5.3%	5.5%
Achievable Economic UCT Potential	0.4%	0.6%	0.8%	2.7%	4.5%	5.6%	5.9%
Achievable Technical Potential	1.3%	1.8%	2.4%	5.4%	7.5%	8.4%	8.4%
Technical Potential	2.8%	3.7%	4.6%	9.0%	11.4%	12.3%	12.5%
Incremental Savings (therms)							
Achievable Economic TRC Potential	357	461	617	1,255	1,118	1,007	1,266
Achievable Economic UCT Potential	373	484	635	1,226	1,129	1,037	1,176
Achievable Technical Potential	1,375	1,478	1,649	1,939	1,564	1,358	1,714
Technical Potential	2,301	2,246	2,389	2,511	1,965	1,722	2,312

Industrial

Scenario B: RNG Future Avoided Costs

Summary of Energy Savings (therms), Selected Years	2023	2024	2025	2030	2035	2040	2045
Reference Baseline	243,965	247,595	247,199	253,812	259,582	266,336	272,292
Cumulative Savings (therms)							
Achievable Economic TRC Potential	94	204	321	927	1,326	1,534	1,518
Achievable Economic UCT Potential	81	168	256	697	1,082	1,322	1,333
Achievable Technical Potential	121	258	405	1,130	1,595	1,818	1,792
Technical Potential	158	334	515	1,391	1,927	2,172	2,155
Energy Savings (% of Baseline)							
Achievable Economic TRC Potential	0.0%	0.1%	0.1%	0.4%	0.5%	0.6%	0.6%
Achievable Economic UCT Potential	0.0%	0.1%	0.1%	0.3%	0.4%	0.5%	0.5%
Achievable Technical Potential	0.0%	0.1%	0.2%	0.4%	0.6%	0.7%	0.7%
Technical Potential	0.1%	0.1%	0.2%	0.5%	0.7%	0.8%	0.8%
Incremental Savings (therms)							
Achievable Economic TRC Potential	95	110	121	123	86	68	60
Achievable Economic UCT Potential	81	87	89	93	83	71	63
Achievable Technical Potential	125	143	154	149	102	82	72
Technical Potential	160	179	187	176	119	97	86

Scenario C: RNG Future Avoided Costs Plus Municipal Gas Bans

Summary of Energy Savings (therms), Selected Years	2023	2024	2025	2030	2035	2040	2045
Reference Baseline	243,814	247,281	246,725	252,549	257,553	263,559	268,795
Cumulative Savings (therms)							
Achievable Economic TRC Potential	94	204	321	927	1,326	1,536	1,525
Achievable Economic UCT Potential	232	318	406	848	1,232	1,475	1,491
Achievable Technical Potential	322	460	606	1,332	1,797	2,021	2,000
Technical Potential	418	595	775	1,651	2,187	2,432	2,416
Energy Savings (% of Baseline)							
Achievable Economic TRC Potential	0.0%	0.1%	0.1%	0.4%	0.5%	0.6%	0.6%
Achievable Economic UCT Potential	0.1%	0.1%	0.2%	0.3%	0.5%	0.6%	0.6%
Achievable Technical Potential	0.1%	0.2%	0.2%	0.5%	0.7%	0.8%	0.7%
Technical Potential	0.2%	0.2%	0.3%	0.7%	0.8%	0.9%	0.9%
Incremental Savings (therms)							
Achievable Economic TRC Potential	95	110	121	123	86	69	60
Achievable Economic UCT Potential	81	87	89	93	83	72	63
Achievable Technical Potential	125	143	154	149	102	82	72
Technical Potential	160	179	187	176	119	97	86

Item	Model	Capacity	Efficiency	Power	Energy	Cost	Notes
1	1.5 Ton	1.5	SEER 13	1.5	1.5	1.5	1.5 Ton, SEER 13, 1.5
2	2 Ton	2	SEER 13	2	2	2	2 Ton, SEER 13, 2
3	3 Ton	3	SEER 13	3	3	3	3 Ton, SEER 13, 3
4	4 Ton	4	SEER 13	4	4	4	4 Ton, SEER 13, 4
5	5 Ton	5	SEER 13	5	5	5	5 Ton, SEER 13, 5
6	6 Ton	6	SEER 13	6	6	6	6 Ton, SEER 13, 6
7	7 Ton	7	SEER 13	7	7	7	7 Ton, SEER 13, 7
8	8 Ton	8	SEER 13	8	8	8	8 Ton, SEER 13, 8
9	9 Ton	9	SEER 13	9	9	9	9 Ton, SEER 13, 9
10	10 Ton	10	SEER 13	10	10	10	10 Ton, SEER 13, 10
11	12 Ton	12	SEER 13	12	12	12	12 Ton, SEER 13, 12
12	15 Ton	15	SEER 13	15	15	15	15 Ton, SEER 13, 15
13	18 Ton	18	SEER 13	18	18	18	18 Ton, SEER 13, 18
14	21 Ton	21	SEER 13	21	21	21	21 Ton, SEER 13, 21
15	24 Ton	24	SEER 13	24	24	24	24 Ton, SEER 13, 24
16	27 Ton	27	SEER 13	27	27	27	27 Ton, SEER 13, 27
17	30 Ton	30	SEER 13	30	30	30	30 Ton, SEER 13, 30
18	36 Ton	36	SEER 13	36	36	36	36 Ton, SEER 13, 36
19	42 Ton	42	SEER 13	42	42	42	42 Ton, SEER 13, 42
20	48 Ton	48	SEER 13	48	48	48	48 Ton, SEER 13, 48
21	54 Ton	54	SEER 13	54	54	54	54 Ton, SEER 13, 54
22	60 Ton	60	SEER 13	60	60	60	60 Ton, SEER 13, 60
23	66 Ton	66	SEER 13	66	66	66	66 Ton, SEER 13, 66
24	72 Ton	72	SEER 13	72	72	72	72 Ton, SEER 13, 72
25	78 Ton	78	SEER 13	78	78	78	78 Ton, SEER 13, 78
26	84 Ton	84	SEER 13	84	84	84	84 Ton, SEER 13, 84
27	90 Ton	90	SEER 13	90	90	90	90 Ton, SEER 13, 90
28	96 Ton	96	SEER 13	96	96	96	96 Ton, SEER 13, 96
29	102 Ton	102	SEER 13	102	102	102	102 Ton, SEER 13, 102
30	108 Ton	108	SEER 13	108	108	108	108 Ton, SEER 13, 108
31	114 Ton	114	SEER 13	114	114	114	114 Ton, SEER 13, 114
32	120 Ton	120	SEER 13	120	120	120	120 Ton, SEER 13, 120
33	126 Ton	126	SEER 13	126	126	126	126 Ton, SEER 13, 126
34	132 Ton	132	SEER 13	132	132	132	132 Ton, SEER 13, 132
35	138 Ton	138	SEER 13	138	138	138	138 Ton, SEER 13, 138
36	144 Ton	144	SEER 13	144	144	144	144 Ton, SEER 13, 144
37	150 Ton	150	SEER 13	150	150	150	150 Ton, SEER 13, 150
38	156 Ton	156	SEER 13	156	156	156	156 Ton, SEER 13, 156
39	162 Ton	162	SEER 13	162	162	162	162 Ton, SEER 13, 162
40	168 Ton	168	SEER 13	168	168	168	168 Ton, SEER 13, 168
41	174 Ton	174	SEER 13	174	174	174	174 Ton, SEER 13, 174
42	180 Ton	180	SEER 13	180	180	180	180 Ton, SEER 13, 180
43	186 Ton	186	SEER 13	186	186	186	186 Ton, SEER 13, 186
44	192 Ton	192	SEER 13	192	192	192	192 Ton, SEER 13, 192
45	198 Ton	198	SEER 13	198	198	198	198 Ton, SEER 13, 198
46	204 Ton	204	SEER 13	204	204	204	204 Ton, SEER 13, 204
47	210 Ton	210	SEER 13	210	210	210	210 Ton, SEER 13, 210
48	216 Ton	216	SEER 13	216	216	216	216 Ton, SEER 13, 216
49	222 Ton	222	SEER 13	222	222	222	222 Ton, SEER 13, 222
50	228 Ton	228	SEER 13	228	228	228	228 Ton, SEER 13, 228
51	234 Ton	234	SEER 13	234	234	234	234 Ton, SEER 13, 234
52	240 Ton	240	SEER 13	240	240	240	240 Ton, SEER 13, 240
53	246 Ton	246	SEER 13	246	246	246	246 Ton, SEER 13, 246
54	252 Ton	252	SEER 13	252	252	252	252 Ton, SEER 13, 252
55	258 Ton	258	SEER 13	258	258	258	258 Ton, SEER 13, 258
56	264 Ton	264	SEER 13	264	264	264	264 Ton, SEER 13, 264
57	270 Ton	270	SEER 13	270	270	270	270 Ton, SEER 13, 270
58	276 Ton	276	SEER 13	276	276	276	276 Ton, SEER 13, 276
59	282 Ton	282	SEER 13	282	282	282	282 Ton, SEER 13, 282
60	288 Ton	288	SEER 13	288	288	288	288 Ton, SEER 13, 288
61	294 Ton	294	SEER 13	294	294	294	294 Ton, SEER 13, 294
62	300 Ton	300	SEER 13	300	300	300	300 Ton, SEER 13, 300
63	306 Ton	306	SEER 13	306	306	306	306 Ton, SEER 13, 306
64	312 Ton	312	SEER 13	312	312	312	312 Ton, SEER 13, 312
65	318 Ton	318	SEER 13	318	318	318	318 Ton, SEER 13, 318
66	324 Ton	324	SEER 13	324	324	324	324 Ton, SEER 13, 324
67	330 Ton	330	SEER 13	330	330	330	330 Ton, SEER 13, 330
68	336 Ton	336	SEER 13	336	336	336	336 Ton, SEER 13, 336
69	342 Ton	342	SEER 13	342	342	342	342 Ton, SEER 13, 342
70	348 Ton	348	SEER 13	348	348	348	348 Ton, SEER 13, 348
71	354 Ton	354	SEER 13	354	354	354	354 Ton, SEER 13, 354
72	360 Ton	360	SEER 13	360	360	360	360 Ton, SEER 13, 360
73	366 Ton	366	SEER 13	366	366	366	366 Ton, SEER 13, 366
74	372 Ton	372	SEER 13	372	372	372	372 Ton, SEER 13, 372
75	378 Ton	378	SEER 13	378	378	378	378 Ton, SEER 13, 378
76	384 Ton	384	SEER 13	384	384	384	384 Ton, SEER 13, 384
77	390 Ton	390	SEER 13	390	390	390	390 Ton, SEER 13, 390
78	396 Ton	396	SEER 13	396	396	396	396 Ton, SEER 13, 396
79	402 Ton	402	SEER 13	402	402	402	402 Ton, SEER 13, 402
80	408 Ton	408	SEER 13	408	408	408	408 Ton, SEER 13, 408
81	414 Ton	414	SEER 13	414	414	414	414 Ton, SEER 13, 414
82	420 Ton	420	SEER 13	420	420	420	420 Ton, SEER 13, 420
83	426 Ton	426	SEER 13	426	426	426	426 Ton, SEER 13, 426
84	432 Ton	432	SEER 13	432	432	432	432 Ton, SEER 13, 432
85	438 Ton	438	SEER 13	438	438	438	438 Ton, SEER 13, 438
86	444 Ton	444	SEER 13	444	444	444	444 Ton, SEER 13, 444
87	450 Ton	450	SEER 13	450	450	450	450 Ton, SEER 13, 450
88	456 Ton	456	SEER 13	456	456	456	456 Ton, SEER 13, 456
89	462 Ton	462	SEER 13	462	462	462	462 Ton, SEER 13, 462
90	468 Ton	468	SEER 13	468	468	468	468 Ton, SEER 13, 468
91	474 Ton	474	SEER 13	474	474	474	474 Ton, SEER 13, 474
92	480 Ton	480	SEER 13	480	480	480	480 Ton, SEER 13, 480
93	486 Ton	486	SEER 13	486	486	486	486 Ton, SEER 13, 486
94	492 Ton	492	SEER 13	492	492	492	492 Ton, SEER 13, 492
95	498 Ton	498	SEER 13	498	498	498	498 Ton, SEER 13, 498
96	504 Ton	504	SEER 13	504	504	504	504 Ton, SEER 13, 504
97	510 Ton	510	SEER 13	510	510	510	510 Ton, SEER 13, 510
98	516 Ton	516	SEER 13	516	516	516	516 Ton, SEER 13, 516
99	522 Ton	522	SEER 13	522	522	522	522 Ton, SEER 13, 522
100	528 Ton	528	SEER 13	528	528	528	528 Ton, SEER 13, 528

Item	Category	Quantity	Unit	Cost	Notes
1
2
3
4
5
6
7
8
9
10
11
12
13
14
15
16
17
18
19
20
21
22
23
24
25
26
27
28
29
30
31
32
33
34
35
36
37
38
39
40
41
42
43
44
45
46
47
48
49
50
51
52
53
54
55
56
57
58
59
60
61
62
63
64
65
66
67
68
69
70
71
72
73
74
75
76
77
78
79
80
81
82
83
84
85
86
87
88
89
90
91
92
93
94
95
96
97
98
99
100

Item	Description	Unit	Quantity	Cost	Notes
1
2
3
4
5
6
7
8
9
10
11
12
13
14
15
16
17
18
19
20
21
22
23
24
25
26
27
28
29
30
31
32
33
34
35
36
37
38
39
40
41
42
43
44
45
46
47
48
49
50
51
52
53
54
55
56
57
58
59
60
61
62
63
64
65
66
67
68
69
70
71
72
73
74
75
76
77
78
79
80
81
82
83
84
85
86
87
88
89
90
91
92
93
94
95
96
97
98
99
100

