



WUTC – Electric Vehicles Meeting

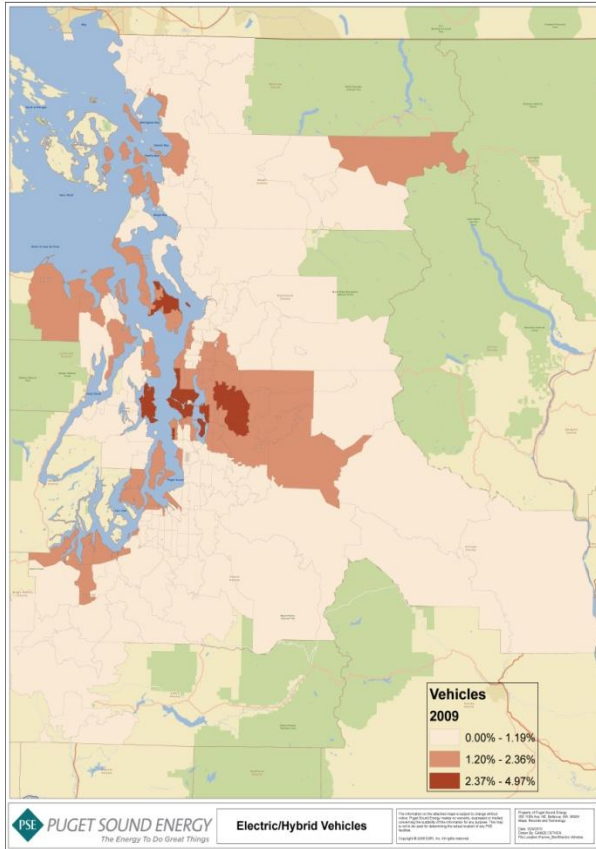
October 28, 2010



PUGET SOUND ENERGY

The Energy To Do Great Things

Puget Sound Region Deployment



DOE Vehicle Technologies Program

- DOE Funding ~ \$99 MM over 5 regions (Puget Sound, Portland, Phoenix, San Diego, Tennessee)
- ECOtality, Idaho National Laboratory, Nissan

DOE Charge Point Demonstration

- DOE Funding ~ \$37 MM
- 4,600 Charging stations over 9 regions (Austin, Detroit, Los Angeles, New York, Orlando, Sacramento, San Jose/San Francisco, Bellevue/Redmond, and Washington D.C.)
- Partnership between Coulomb Technologies, Ford, General Motors and Daimler

Energy Efficiency Block Grants/Clean Cities

- DOE Funding ~ \$3 MM total
- King County, Kitsap County, Cities of Bellevue, Mercer Island, Bainbridge Island, Seattle, Port of Seattle, and others

West Coast Green Highway

- Project to deploy charging station infrastructure along major interstate highways in Washington, Oregon and British Columbia

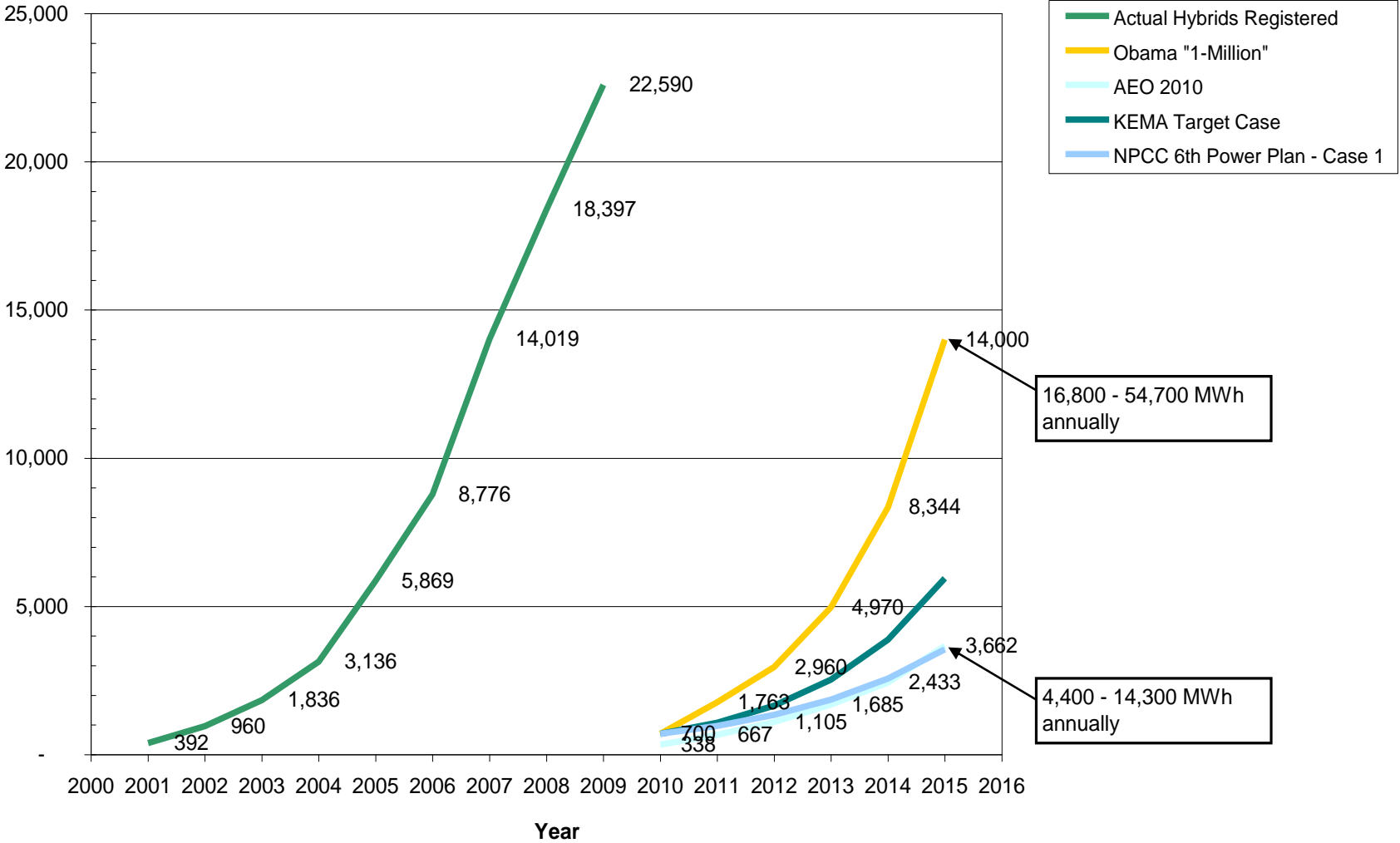
Hybrid Market Penetration

- Portions of service territory have seen strong adoption of hybrid vehicles
- Model illustration of plug-in electric vehicles deployment

Electric Vehicle Forecast



**Actual Hybrid Vehicles and Projected PEVs in PSE Electric Service Territory
(approximately 2 MM Light Duty Vehicles)**



PSE Activities

- Customer Service and Value
 - Customer education & outreach
 - Built new web page
 - www.pse.com/electricvehicles
 - Development of customer support mechanisms
- Infrastructure and technical evaluation
 - Two plug-in hybrids in fleet
 - Load and distribution modeling
 - Component of smart grid roadmap
- Active Involvement in Regional Partnerships
 - Major Customers
 - The EV Project (ECOtality)
 - State Commerce/PSRC
 - WSDOT/West Coast Green Highway
 - Clean Cities
 - Vendors
 - EEI Electric Vehicle Task Force

Home | Pay Stations & Service Map | Contact Us

My PSE Account

Tuesday, October 26, 2010

HOME & BUSINESS SOLUTIONS ▾ SAFETY & RELIABILITY ▾ ENERGY & ENVIRONMENT ▾ COMMUNITY ▾ INSIDE PSE ▾

FOR YOUR HOME

- Re-Energize Your Block
- Low Income Assistance
- Ways to Save
- Rebates & Promotions
- PSE's Green Power Program
- Customer Renewable Generation
- Electric Vehicles**
- Buying a New Home
- Choosing Natural Gas
- Contractor Referral Service
- Electric & Natural Gas Service Requests
- Energy Advisors
- Back-up Generators
- Rates
- Service Guarantees
- Condominium Owners

General Info: 1-888-225-5773

Electric Vehicles

Getting electric-vehicle-ready at your home or business

1) Choose your equipment

What vehicle meets my needs?

- Electric vehicles that will be soon entering the market come in many different sizes and styles and with different range and speed specifications. The distance you want to drive between battery charges is an important consideration in identifying the right car for you.

What sort of charger do I need?

- A charger may come with or be recommended for your vehicle. Also, there may be an opportunity to receive a charger through [The EV Project](#) or [ChargePoint America](#). The time you're usually parked and the distance you usually drive are important factors to consider to make sure that you have the right charger. Visit our [Charging page](#) for more information.

Where should I put the charger?

- Consider where and in what direction you park your car, where you can mount the charger and get power to it, and where the cords will run when they are connected to your car or hanging on the wall. Your charging-station provider or installer may be able to help with this process. If you live in an apartment or condo, you may need to consult with your building's owner or homeowner's association.

➤ [Electric Vehicles](#)

➤ [Getting Electric-Vehicle-Ready at Your Home or Business](#)

➤ [Charging Your Electric Vehicle](#)

➤ [Types of Electric Vehicles](#)





Questions?



*Local Tesla owners group visits
PSE Wild Horse Wind Project*